

GV File

Configuring multiple Nodes on GV File Server



Version History

Date	Version	Release by	Reason for changes
DD/MM/2011	1.0	J Metcalf	Document originated (1 st proposal)
03/05/2019	2.0	J Metcalf	GV Rebrand
09/03/2021	2.1	J Metcalf	Rebrand

Table of Contents

1. Introduction	4
2. Procedure: to configure multiple GV File Nodes	5
2.1 Configuring Multiple Nodes	6
2.2 Configuring a second GV File Node in the GV File Client	9

1. Introduction

The GV File platform can be configured to operate multiple GV File Nodes on a single GV File Server. This would be necessary if the GV File installation is to run multiple jobs simultaneously. In such a system, an equivalent number of licenses would need to be purchased.

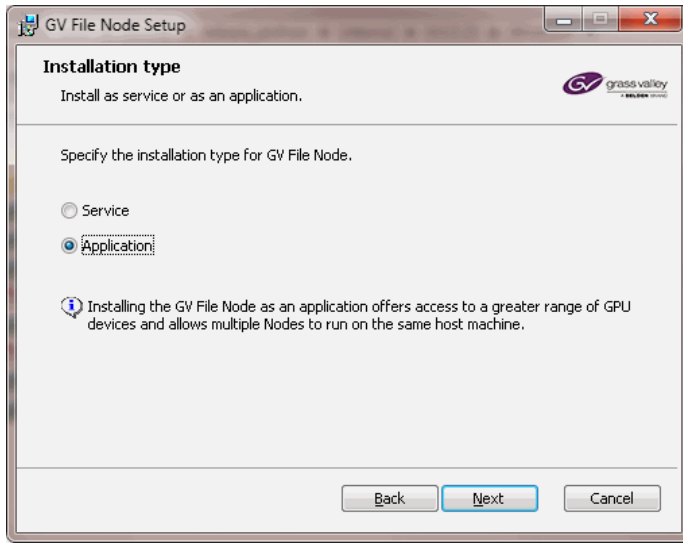
If we consider a two Node system, then two licenses would be required. The licenses could be any GV File products: Alchemist, Kronos or Quasar.

It should also be considered that running multiple jobs simultaneously on a single GV File Server, that the system resources will effectively be shared across the multiple Nodes. This is an important consideration because where there might be enough resource to achieve a single HD run-time conversion (i.e. a one hour duration program converting in one hour), if there is insufficient resource to run two jobs, then the conversion times of each job running simultaneously will be extended and the benefit of having multiple Nodes will be diminished.

If we consider a GV File Pro Turnkey, the current hardware is probably capable of running two simultaneous HD frame rate conversion jobs. However, it will not have enough resource to run two jobs if one of the jobs includes a 4K resolution job. There are other factors that can effect processing durations, such as if the Cadence Detector is active, or if there is an HDR conversion taking place.

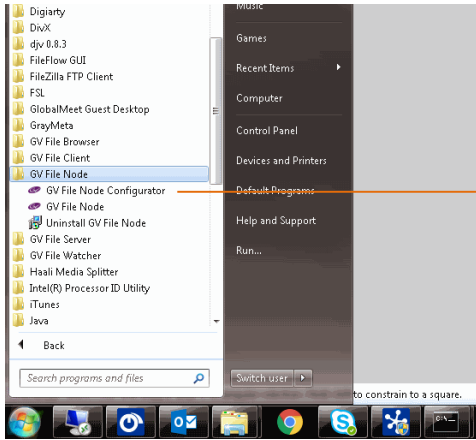
2. Procedure: to configure multiple GV File Nodes

Note: to install multiple Nodes onto a GV File Server, the GV File Node must be installed as an **Application**, and not as a Service. In circumstances where the GV File Node has been previously installed as a **Service**, the GV File Node should be uninstalled and the GV File Node installer run again. At the point in the install procedure where the install wizard asks if the GV File node is to be installed as a **Service** or an **Application**, choose **Application**:

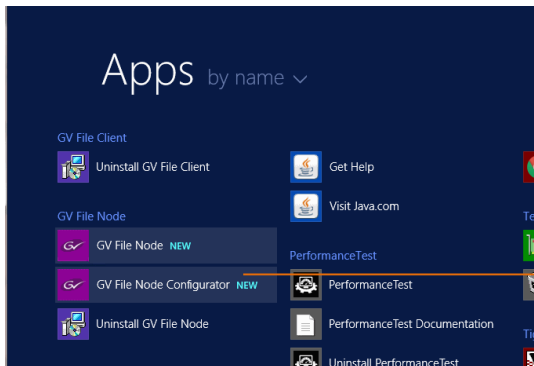


2.1 Configuring Multiple Nodes

1. Run the Application **GV File Node Configurator**.

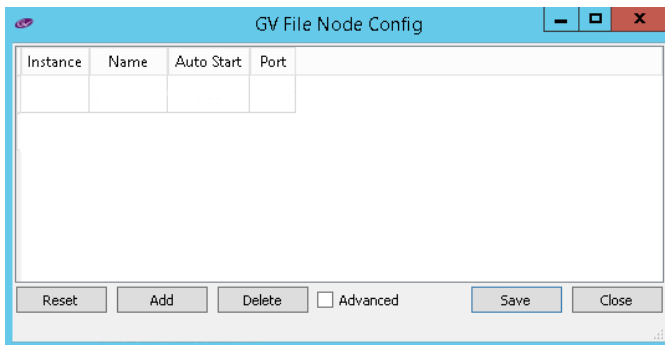


In a Windows 7 system, this application can be found in the **All Programs** list



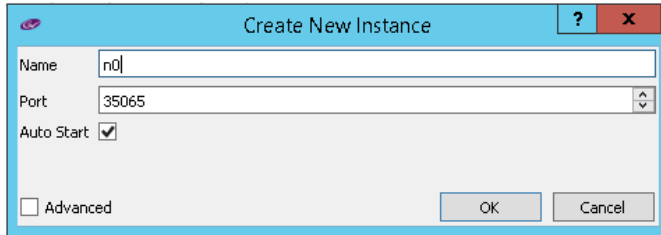
In a Windows Server 2012 system, this application can be found in the list of installed Apps

2. The **GV File Node Configurator** window will now appear:



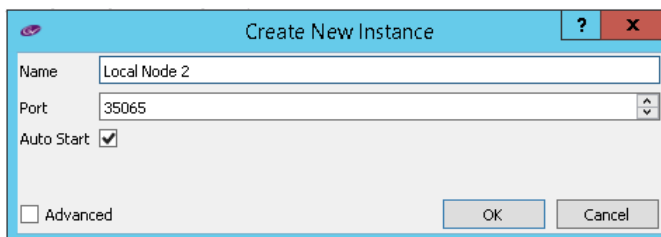
Select **Add**.

3. A new window will appear called **Create New Instance**.



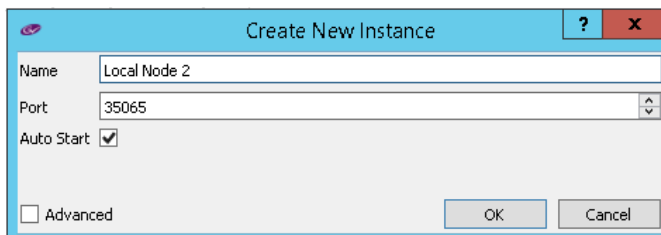
The screenshot shows a dialog box titled "Create New Instance". It has a light blue header bar with a question mark icon and a close button (X). The main area contains three input fields: "Name" with the text "n0", "Port" with the value "35065" and a small up/down arrow, and "Auto Start" with a checked checkbox. At the bottom left, there is an unchecked checkbox labeled "Advanced". At the bottom right, there are two buttons: "OK" and "Cancel".

This window will appear with a default name of **n0**. This can be left as it is, but changing it to something more meaningful is considered better practice.



The screenshot shows the same "Create New Instance" dialog box. The "Name" field now contains the text "Local Node 2". The "Port" field still contains "35065" and the "Auto Start" checkbox is still checked. The "Advanced" checkbox remains unchecked, and the "OK" and "Cancel" buttons are still present at the bottom right.

4. The Port number must be unique. Assuming that the first node is configured with the default setting of 35064, the new Node cannot use this port number, or any other port number assigned to the various GV File components. In this example the port number has been set automatically to the next free port number, which is: 35065

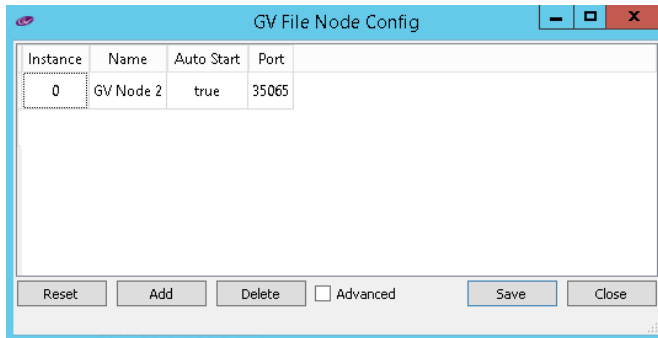


This screenshot is identical to the previous one, showing the "Create New Instance" dialog box with "Local Node 2" in the Name field, "35065" in the Port field, and the "Auto Start" checkbox checked.

Note that the **Auto Start** box will be enabled. This is the required setting if the Node is to always be available.

Click **OK**

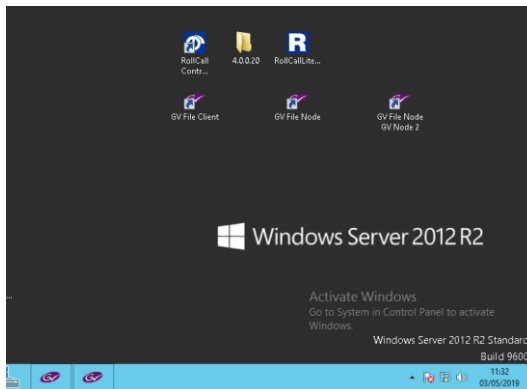
The **GV File Node Config** window will update with the new Node details:



Select **Save**.

The second Node is now configured.

5. Note that a new desktop icon will appear enabling the new Node application to be launched



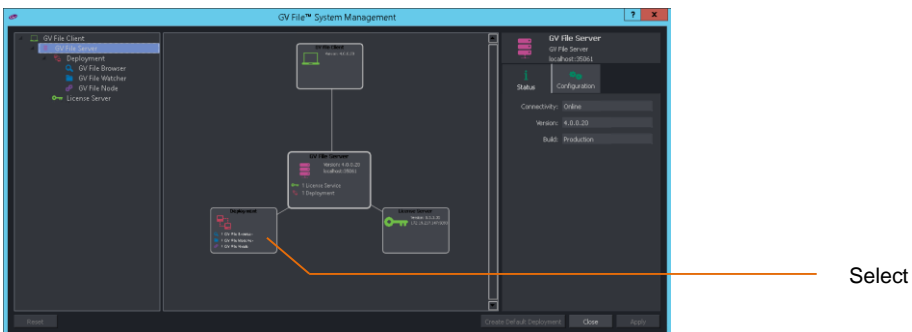
Select the new Icon to start the second Node.

2.2 Configuring a second GV File Node in the GV File Client

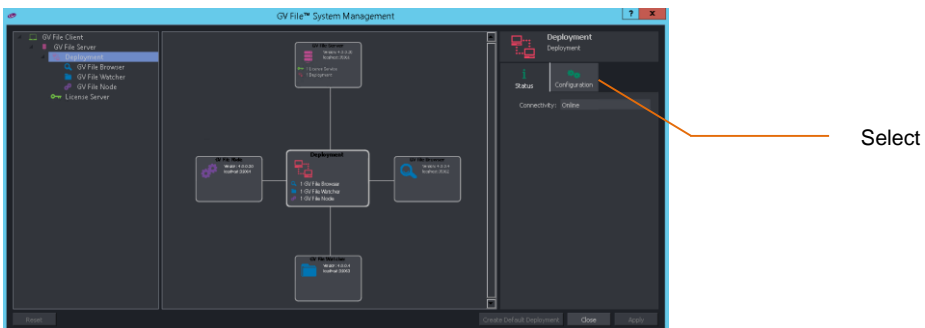
1. In the GV File Client, open the **System** menu.



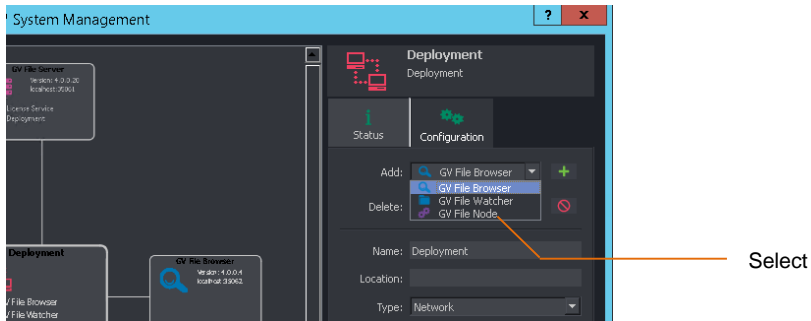
2. In the System window now displayed, double click on the **Deployment** icon.



3. The **System Management** window will now graphically display the **Deployment**.
Select **Configuration** in the right hand pane.

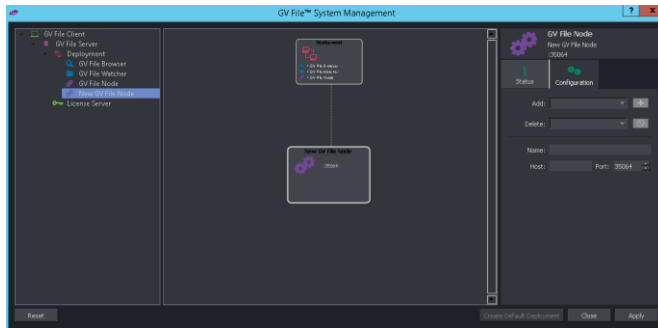


4. In the **Configuration** tab, use the drop down menu of the **Add** field to select: **GV File Node**

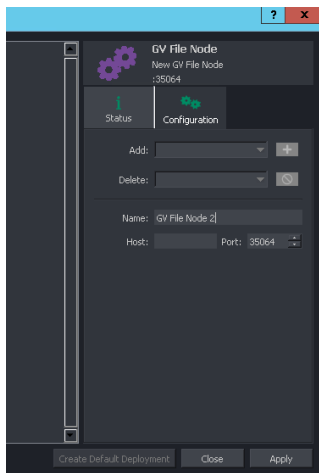


Then click on the green **+** icon to add the new Node.

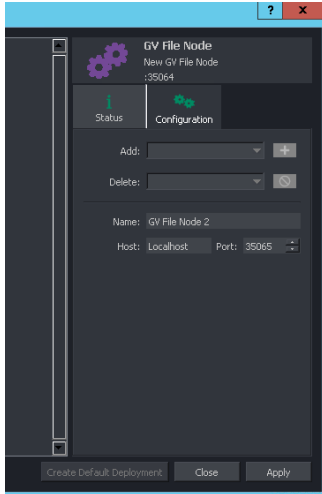
The **System Management** Window will now update.



5. Enter an appropriate name for the new Node. In this example the name **GV File Node 2** has been entered.



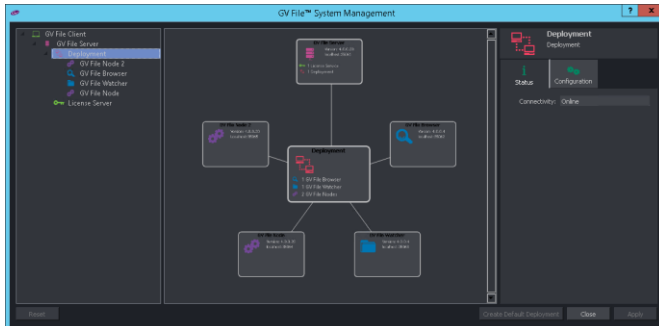
- Enter the Host name as **Localhost** and set the Port number to: **35065**



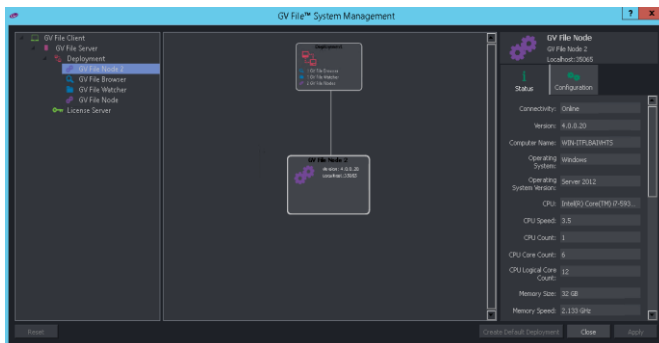
Click **Apply** to save the changes.

- Now double click on the **Deployment** icon again.

The **System Management** window should now display two active GV File Nodes.



Now click on the new Node. The **GV File Management** window will update:



In the Status window **Connectivity** should report: **Online**.

The procedure is now complete.