

Capturing in 3D using STORM 3G & STORM 3G Elite

Alex Kataoka, Product Planning, September 2012

APPLICATION NOTE



This application note details the steps required to capture 3D footage using EDIUS version 6.5 or later and either STORM 3G or STORM 3G Elite hardware from Grass Valley, a Belden Brand.

Please refer to the Reference Manual for further information about 3D editing.

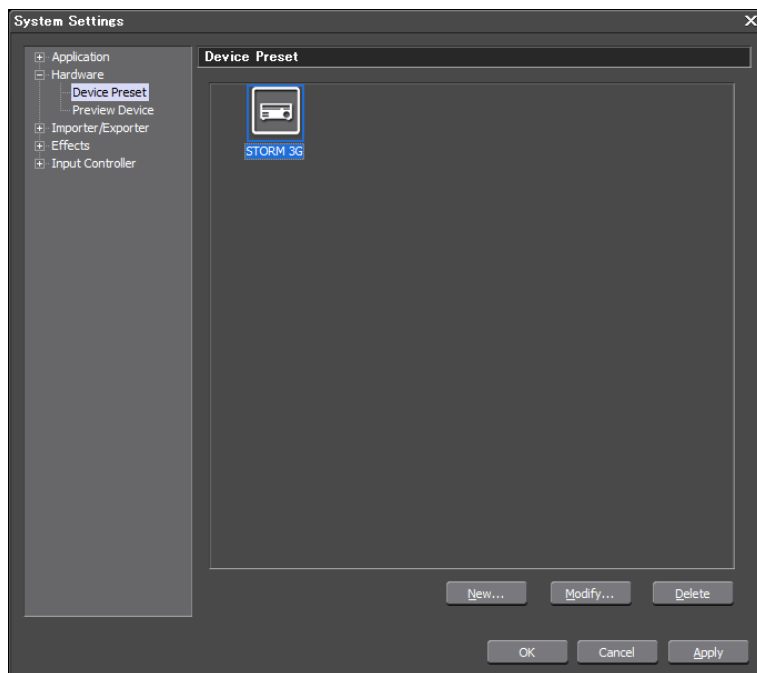
wwwapps.grassvalley.com/manuals/EDIUS7_REFE_EN/107/10_7_11_31_12_3.html

Creating Device Presets

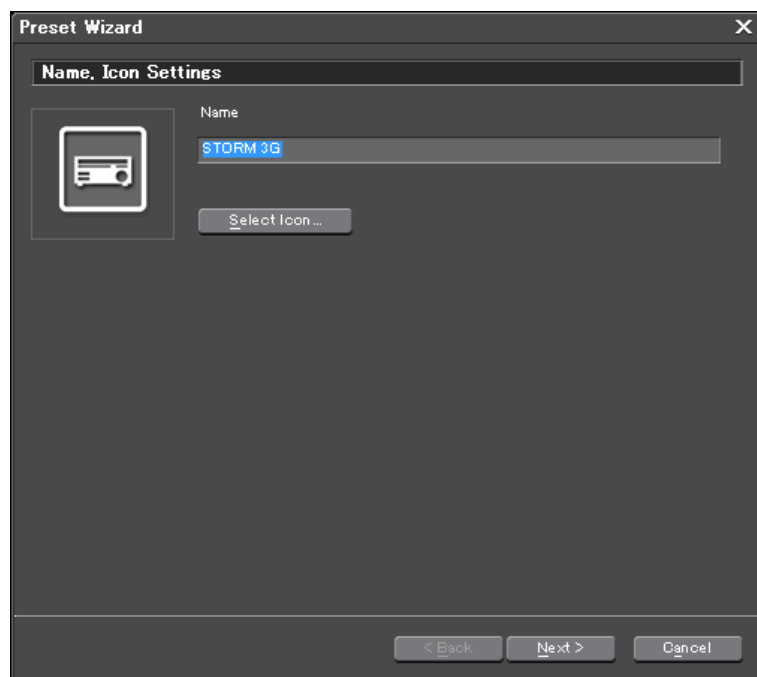
Start EDIUS and go to [Settings] > [System Settings].

Click “Hardware” on the category tree and select “Device Preset.”

Click [New] to start the preset wizard.

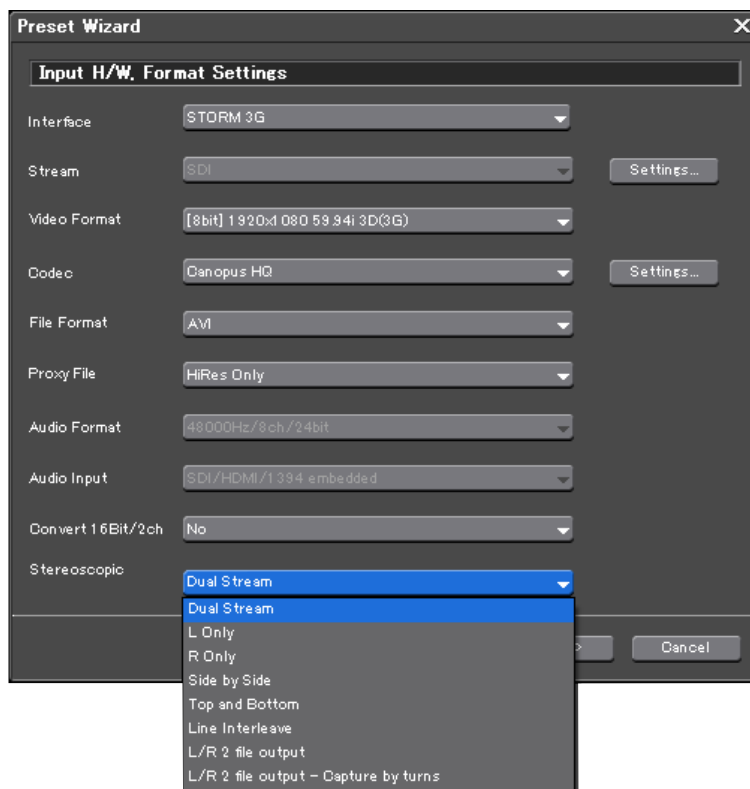


Enter a preset name and select a preset icon, and then click [Next].



Set [Interface] to [STORM 3G], set [Video Format] to select the capture format, and set [Stereoscopic] to select the 3D format.

Click [Next] after the setup.



STORM 3G Elite

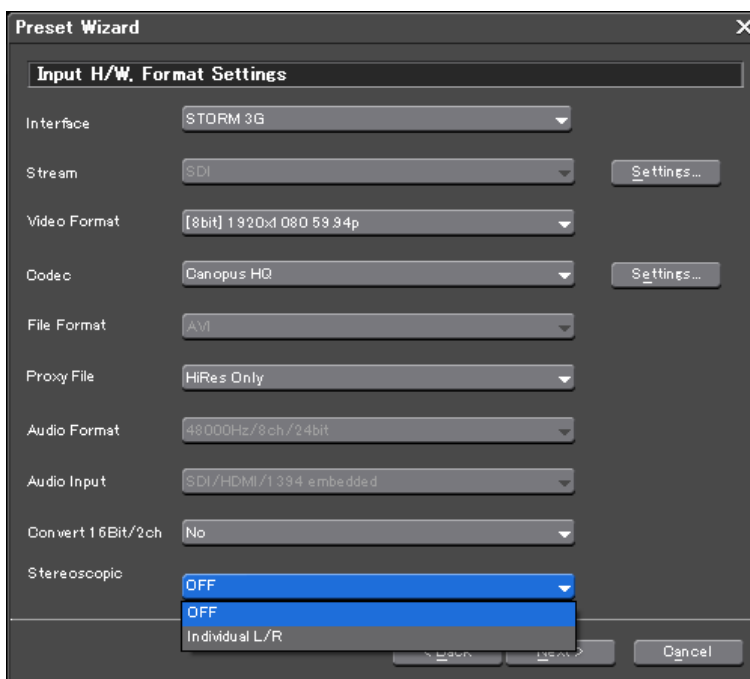
Select “Stream,” and set SDI A, SDI B, and SDI Dual Link according to the video equipment connected.

The following clips are created according to the [Stereoscopic] setting.

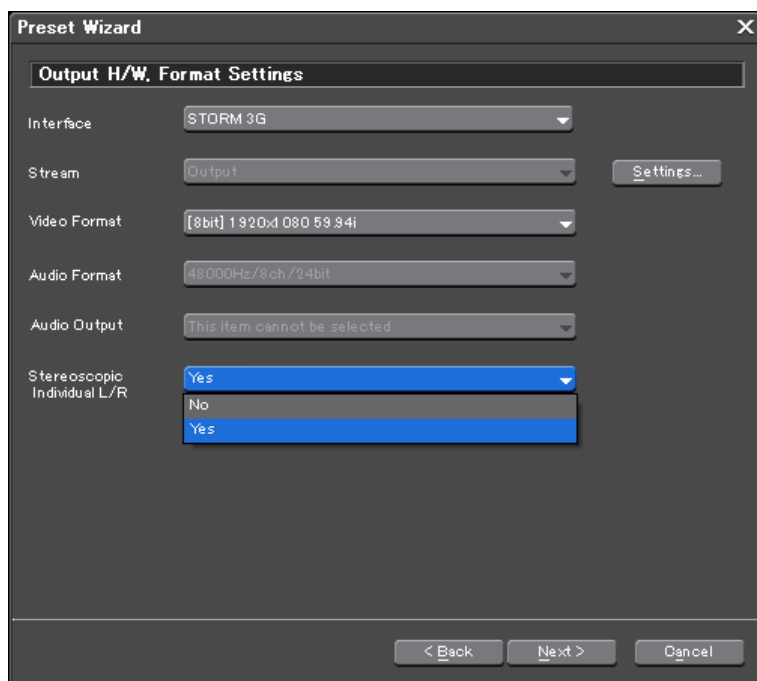
- When any of “L only,” “R Only,” “Side by Side,” “Top and Bottom” and “Line Interleave” is selected the video stream of left and right is saved as single video stream to one file
- When “Dual Stream” is selected, two video streams, left and right, are saved as one file
- When “L/R 2 file output” and “L/R 2 file output-Capture by turns” are selected, two files (for left and right) are saved:
 - [L/R 2 file output] performs a capture of two files simultaneously
 - [L/R 2 file output-Capture by turns] is used when the system performance does not permit creating two files at the same time. It will capture from the same source, one file at a time

About Individual L/R Capture (batch capture)

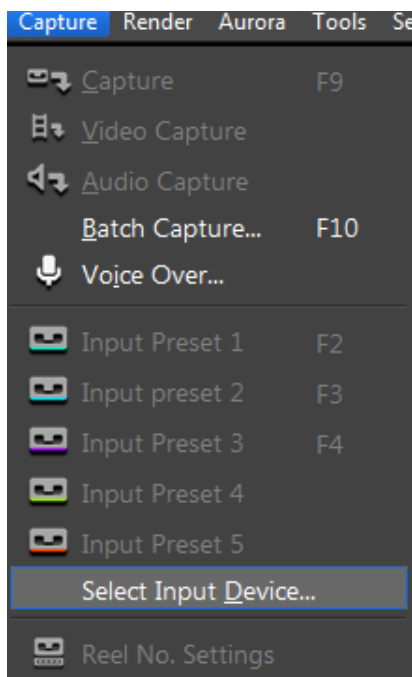
If you have separate source tapes with left and right images, set the Video Format to settings that do not end with (3G), and set [Stereoscopic] to [Individual L/R].



In output settings, set the output format settings.
Click [Next] and check the final settings.

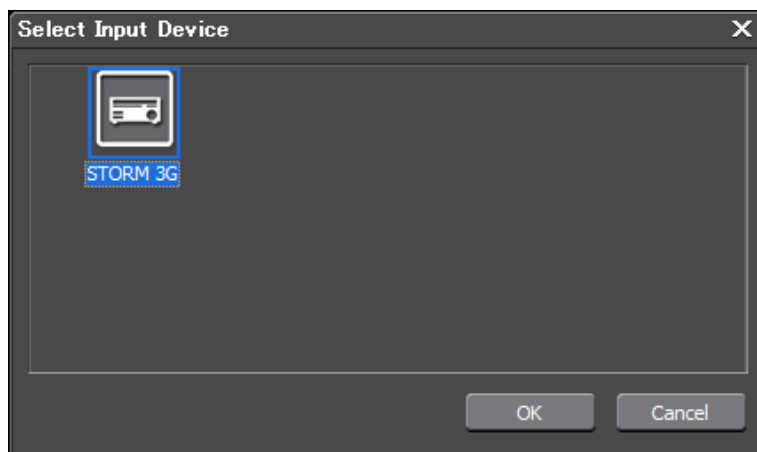


Capturing Footage

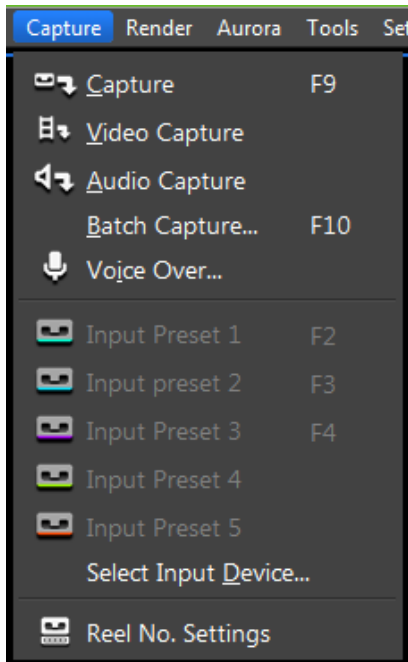


Select [Capture] > [Select Input Device].

Select device preset and click [OK].



Capture



Go to [Capture] menu and select Capture mode.

Whenever you select [L/R 2 file output - Capture by turns] or [Individual L/R Capture] in Stereoscopic setting, a dialog box to set Individual L/R can be found in the Batch Capture menu.

