

APPLICATION NOTE

EDIUS 4/5/6 License Manager (EdiusLM.exe Tool)

Jenny Pitts

November 2010

The Grass Valley™ EDIUS® License Manager tool is used to transfer licenses from your USB License Key to your PC and back to the USB License Key when you do not have an available USB slot or you are concerned about possible loss or damage to your USB License Key.

EdiusLM.exe Tool

The Grass Valley EdiusLM.exe tool is the License Manager tool; this is used to transfer licenses from your USB License Key to your PC and back to the USB License Key.

Reasons for transfer:

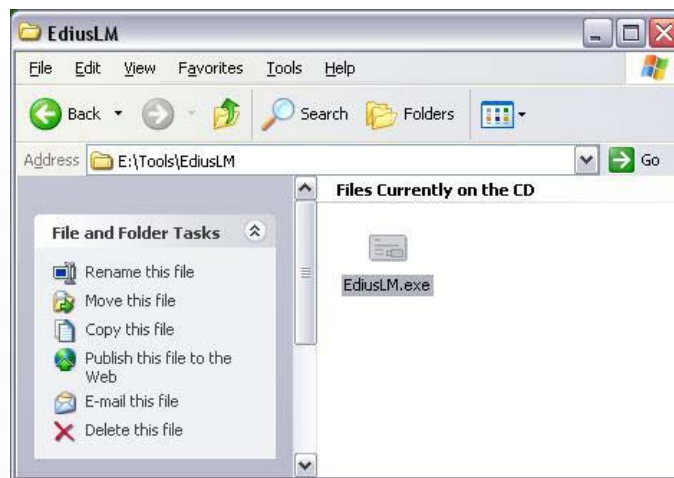
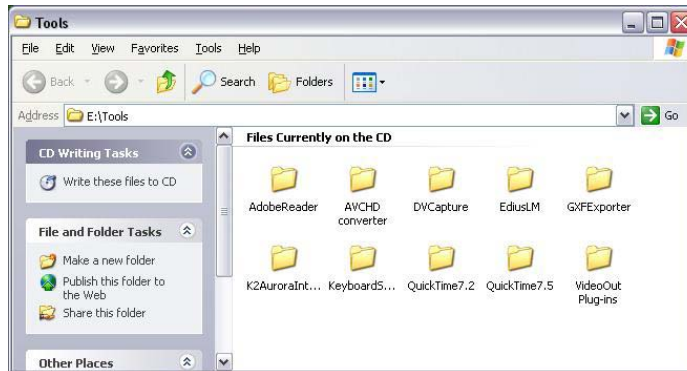
- Not enough USB slots
- Worried about loss or damage to your USB License Key

Whenever possible, we recommend keeping the USB License Key connected to your PC (desktop workstation or laptop).

Note: When I refer to the “EDIUS USB License Key” or just the “USB License Key,” I am referring to the USB dongle.

Location of the EdiusLM.exe Tool

The EdiusLM.exe.exe tool can be found in your EDIUS full installation DVD tools folder:



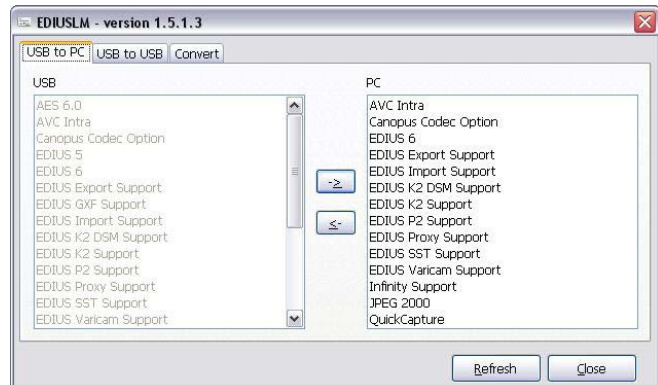
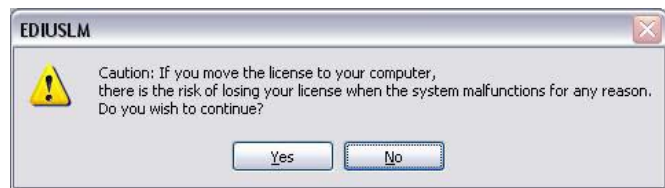
We recommend copying and pasting the EdiusLM.exe file onto your computer’s desktop.

Transferring Licenses

Transferring Licenses from the USB License Key to the PC

If you have decided that you wish to transfer your EDIUS license from the USB License Key to your PC, please use the following steps:

1. Insert your EDIUS USB License Key into a working USB slot
2. Double-click the EdiusLM.exe icon
3. Select all the licenses you have in the USB column (Shift + top and bottom license)
4. Select the arrow on the middle pointing to the right (top arrow)
5. You will be shown a warning message with some advice
6. Select "Yes" and the license will be transferred to the PC side, during this process both columns will gray out
7. After transfer, the USB side will remain grayed out.
8. You can now close the EdiusLM.exe tool and remove your USB License Key



Important Notes:

Now that you have transferred your license, you need to be aware of the following:

- If you plan to update your version of EDIUS you will need to transfer the license back to the USB License Key
- If you need to reinstall the operating system or use restore points you will need to transfer the license back to the USB License Key beforehand
- If you plan to change the HDD in your system, you will need to transfer your license back to the USB License Key before changing the HDD

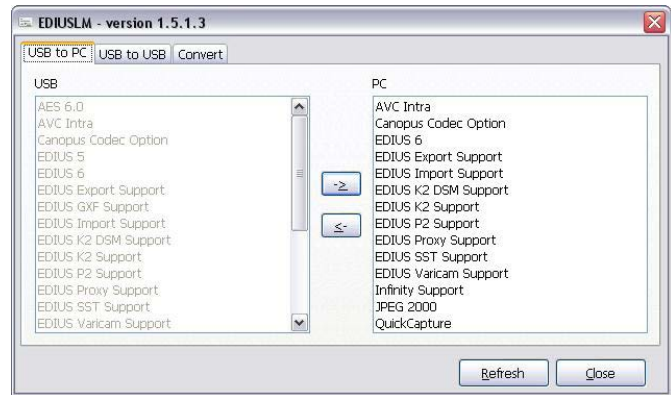
Please keep your EDIUS USB License Key in a safe location!

Transferring Licenses (cont.)

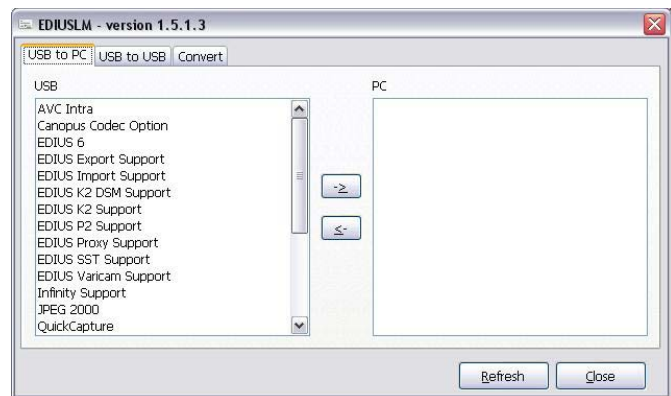
Transferring Licenses from the PC to the USB License Key

When you need to transfer your license from your PC back to your USB License Key, please use the following steps:

1. Insert the EDIUS USB License Key that you transferred the license from (NOTE: You can only transfer the licenses back to the original USB License Key that they came from.)
2. Double click the EdiusLM.exe icon



3. Select all the licenses that you have in the PC column (Shift + top and bottom license)
4. Select the arrow on the middle pointing to the left (bottom arrow)
5. The licenses will transfer, during this process both screens will grey out
6. The licenses in the USB window will now be darkened



7. Close the EdiusLM.exe tool
8. Your licenses have now been returned to the USB License Key and it can be removed

Important Note for All Transfers:

If you remove the EDIUS USB License Key during the transfer process, you can corrupt the USB License Key. If you think this might be the case, please contact your regional Grass Valley support team for further information or refer to the troubleshooting section beginning on page 6.

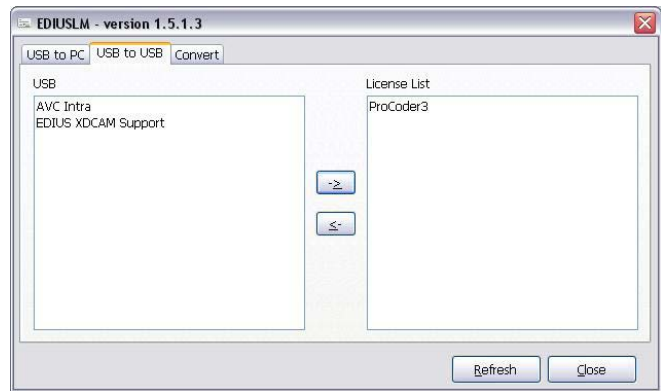
Merging Licenses

With EDIUS, there are additional licenses you can buy, such as VTR Emulation, GXF Exporter, etc. that will come with their own USB License Key. The EdiusLM.exe tool allows you to merge the licenses on to one USB License Key to keep the amount of USB slots required to a minimum.

The EdiusLM.exe tool has a tab called "USB to USB" where the process takes place. Please follow the steps below to achieve this:

(In this example, I will transfer a ProCoder 3 License)

1. Insert the additional USB License Key into the PC
2. Double Click EdiusLM.exe icon
3. Select the "USB to USB" tab
4. Select the license you want to move from the USB column
5. Select the arrow pointing to the right (top arrow)
6. This will transfer the license to the License List column
7. The license will transfer, during this process both screens will gray out
8. Remove the additional USB License Key while EdiusLM.exe is open



Merging Licenses (cont.)

9. Insert your EDIUS USB License Key for which you wish to have the additional license installed

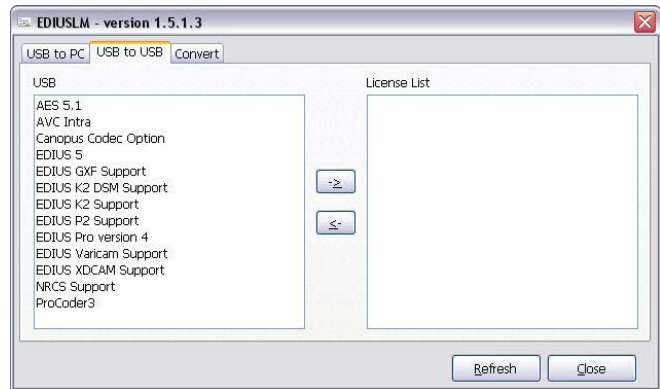


10. Your additional license will no longer be greyed out so you can transfer it

11. Select the license from the License List column

12. Select the arrow pointing to the left (bottom arrow)

13. The license will transfer, during this process both screens will gray out



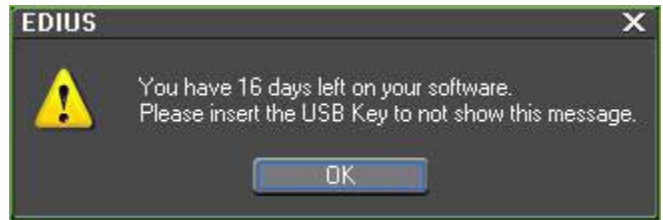
14. This process is now complete. You can close the EdiusLM.exe tool

Important Notes:

- If your EDIUS USB License Key is damaged, you will lose your additional license. Please make note and advise any support teams about what licenses are on your USB License Key. We strongly recommend taking a print screen of the license list you have.
- In my example, you will see I have transferred ProCoder 3 license, this is only possible with ProCoder 3 as earlier versions of ProCoder use a different type of USB License Key.
- You can use this process to merge EDIUS license versions so you have one USB License Key for all your EDIUS 4, 5, and 6 licenses, but this may not be supported if damaged.

Troubleshooting

We will often ask you to use the EdiusLM.exe tool to troubleshoot problems with your licenses. If you try to open your EDIUS program and are faced with an error such as:



It indicates a potential problem with your EDIUS USB License Key. This guide will show you some of the common errors you will see.

Insert your EDIUS USB License Key into the PC before troubleshooting, double click the EdiusLM.exe icon. Please see the different results below to find your next step:



Error 7 – Will either mean that the USB License Key is not connected, the driver has not been installed correctly, or there is a hardware problem with the USB License Key.

There is an LED light inside your USB License Key. Please check the USB LED:

LED Off = Hardware problem

LED Flashing/Constant = Driver issue or hardware problem, please reinstall the HASP driver from your current version of your EDIUS installation DVD.

RMA Procedure:

1. Contact your Grass Valley Authorized Reseller/Distributor to arrange an RMA
2. The EDIUS USB License key will need to be sent in for repair
3. Your distributor will need to send the USB License Key to Grass Valley, so please request a turn-around time when making your RMA request

Troubleshooting



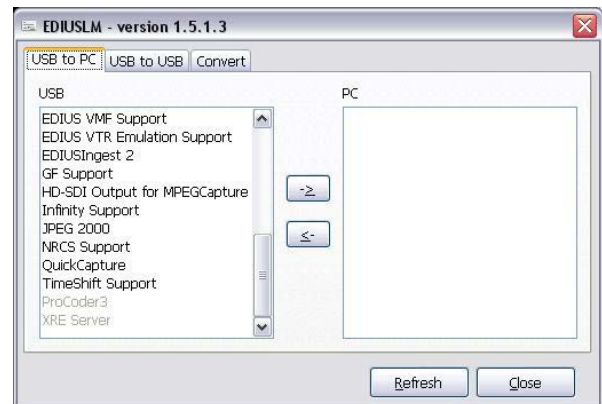
When the EDIUS USB License key is inserted and the EdiusLM.exe tool is blank, it means the key may have become corrupted.

Please check the version of EdiusLM.exe you are using, if this is an older version than the one found on your EDIUS Install DVD, it will not show the latest licenses.

RMA Procedure:

1. Contact your Grass Valley Authorized Reseller/Distributor to arrange an RMA
2. The EDIUS USB License key will need to be sent in for repair
3. Your distributor will need to send the USB License Key to Grass Valley, so please request a turn-around time when making your RMA request

When the license appears greyed out on the USB section, it means the license has been transferred. The transferred license should show in the PC side, if it does not please check on any other PCs you have EDIUS installed on in case it has been connected to the wrong system. Also check the "USB to USB" tab in case the license has been transferred to the License List.



Please make sure that you have registered your EDIUS software with the full installation serial number and make sure all your details are up to date.

RMA Procedure:

1. Contact your Grass Valley Authorized Reseller/Distributor to arrange an RMA
2. Add additional information will be needed: Customer Name
Customer ID
E-mail address used to register EDIUS
3. The EDIUS USB License Key will need to be sent in for repair
4. Your distributor will need to send the USB License Key to Grass Valley, so please request a turn-around time when making your RMA request

Recommendations

We have some recommendations for your EDIOUS USB License Key(s):

- Use the correct version of the EdiusLM.exe tool for your version of EDIOUS
- Ignore all Windows updates for HASP drivers
- Insure your EDIOUS/ProCoder USB License Key(s) for the full value of the software

Use the Correct EdiusLM.exe Tool for Your Version of EDIOUS

If you are sure you have other licenses that are not listed in the EDIOUS License list, check the version of EdiusLM.exe you are running. This can be found when the EdiusLM.exe tool is opened on the top toolbar:



If you do not have a version shown, this is most likely for EDIOUS 4. If you have a later version installed, please get the EdiusLM.exe tool from the EDIOUS Installation DVD; copy and paste it onto your Windows Desktop.

For EDIOUS 5 and 6, here is the list of versions:

EDIOUS 5.00 = 1.4.0.6

EDIOUS 5.10 = 1.4.0.14

EDIOUS 5.12+ = 1.4.0.15

EDIOUS 6.01 = 1.5.1.3

Ignore All Windows Updates for HASP Drivers

Your automatic updates for Windows can include checking for updates for HASP drivers, please do not install these as it can cause the USB License Key not to be found.

If you find this happens, always try to reinstall the HASP driver from the EDIOUS Installation DVD.

Insuring EDIOUS/ProCoder USB License Keys

We strongly recommend that you arrange to get insurance for your EDIOUS and/or ProCoder USB License Keys for the full amount of EDIOUS/ProCoder. If for any reason your EDIOUS/ProCoder USB License Keys are lost or stolen, it will not be covered by warranty.

We do not have any discounts for replacing the license. You will need to contact your authorized Grass Valley reseller to purchase a new copy at full price.

If you have your EDIOUS/ProCoder USB License Key covered by your insurance (depending on your policy) you can file a claim for the cost of the new license (subject to any policy deductibles).

SALES

Local and regional sales contacts can be found by visiting www.grassvalley.com/sales

SUPPORT

Local and regional support contacts can be found by visiting www.grassvalley.com/support