

APPLICATION NOTE

How to Capture Using Blackmagic Design Intensity Hardware for EDIUS 6

Alex Kataoka, *Product Planning*

December 2011

Grass Valley™ EDIUS® 6.06 or later supports capturing footage from the Blackmagic Design Intensity series working as a DirectShow capture device. This document describes the procedures for capturing footage via the Blackmagic Intensity devices.

Compatible Hardware

Intensity Pro, Intensity Shuttle, Intensity

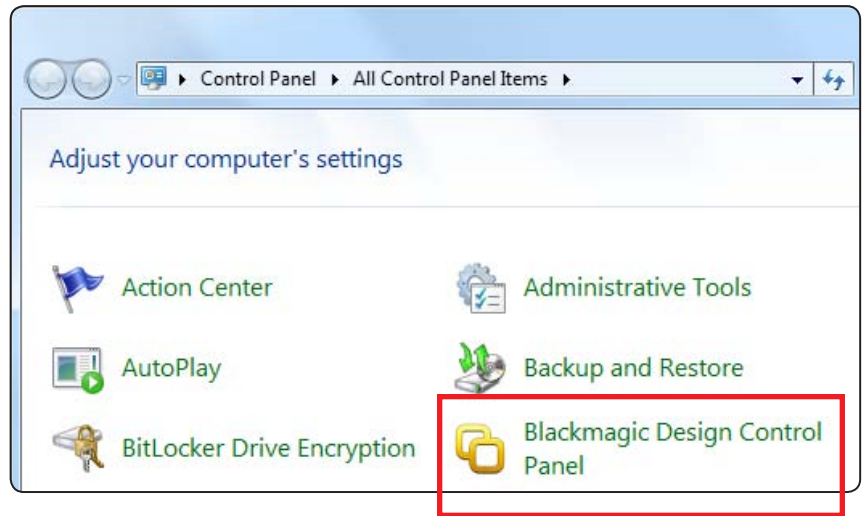
(This document describes capturing using the Intensity Pro card as an example.)

Design Limitations

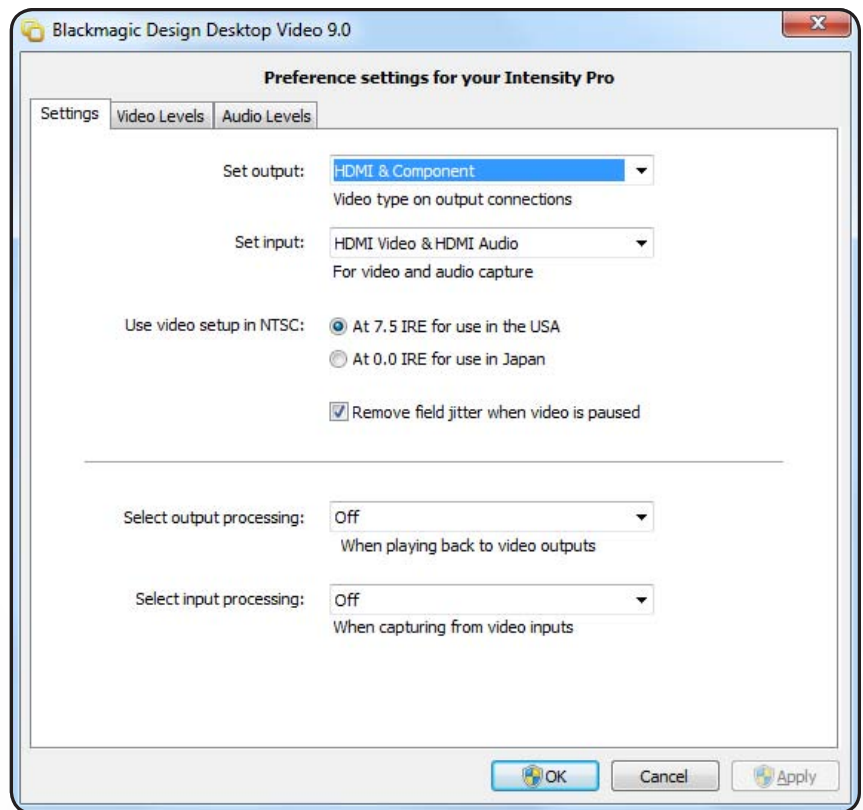
- Output ports of the hardware cannot be used for printing to tape or preview while editing
- RGB series codec is not supported for capture
- Deck control and batch capture function not supported
- Timecode in the source footage cannot be captured

Select Video Input Port

1) Open [Blackmagic Design Control Panel] in Windows Control Panel.

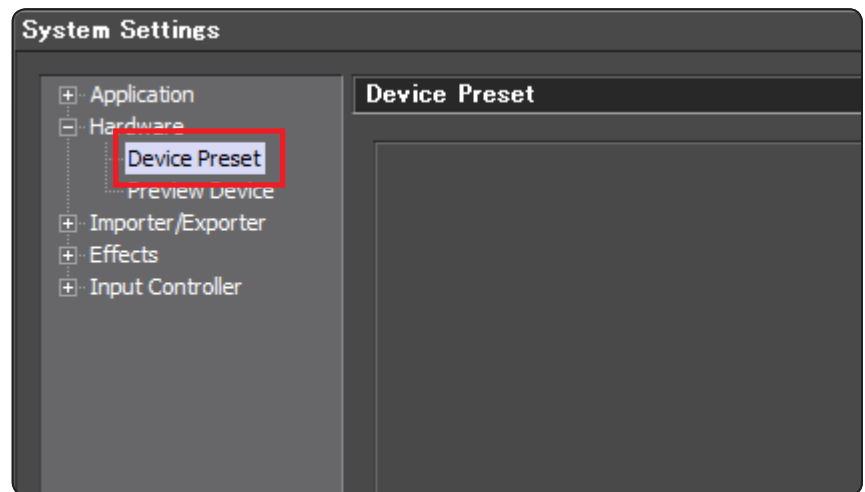


2) The Blackmagic control panel will appear. Choose an input port and then click the [OK] button.

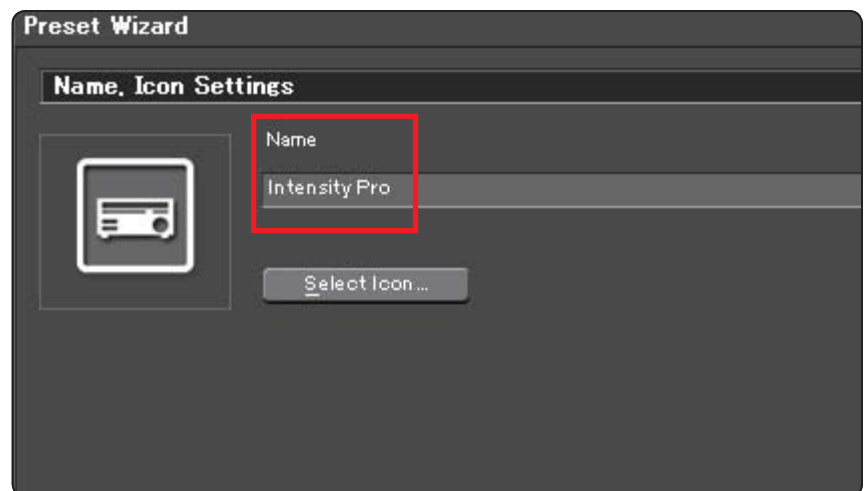


Create a Device Preset

- 1) Start EDIUS and then choose [Settings] > [System Settings].
- 2) Choose [Hardware] > [Device Preset] in the left panel.



- 3) Start the preset wizard by clicking [New...] button.
- 4) Enter a preset name and choose a preset icon, and then click [Next>] button.

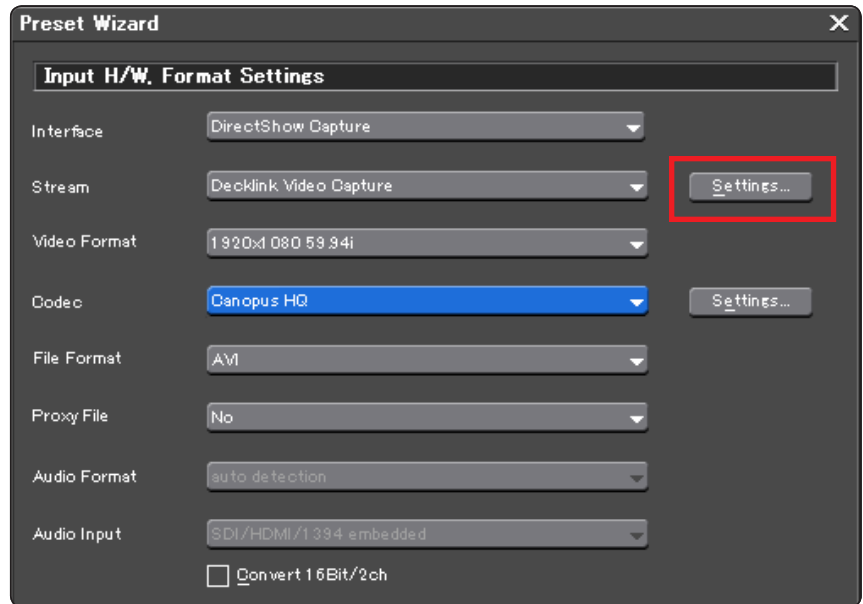


Create a Device Preset (cont.)

5) Choose the parameters below and then click [Settings...].

Interface: DirectShow Capture

Stream: Decklink Video Capture



6) Choose "Decklink Audio Capture" as the audio device and an audio format, and then click the [OK] button.

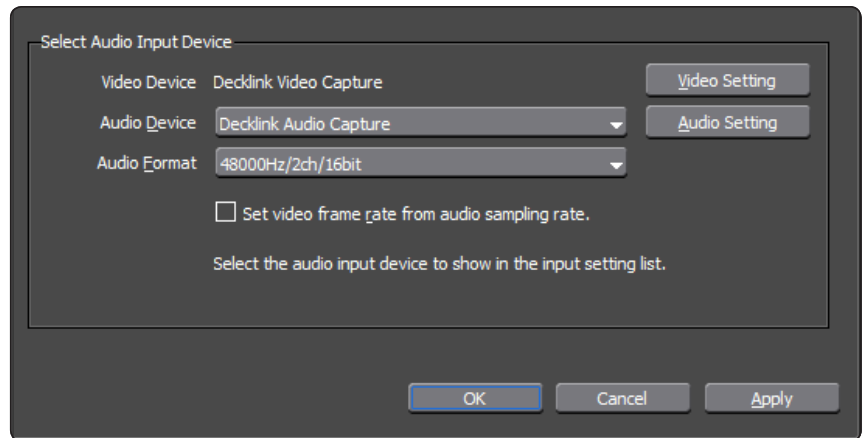
NOTE: The modified audio format setting in Decklink's Audio Capture Properties is not applied. This is because the "Audio Format" is set in this screen prior to use.

7) Click [Next>] button in the wizard screen.

8) The output hardware format setting screen will appear. Click [Next>] button without changing any settings.

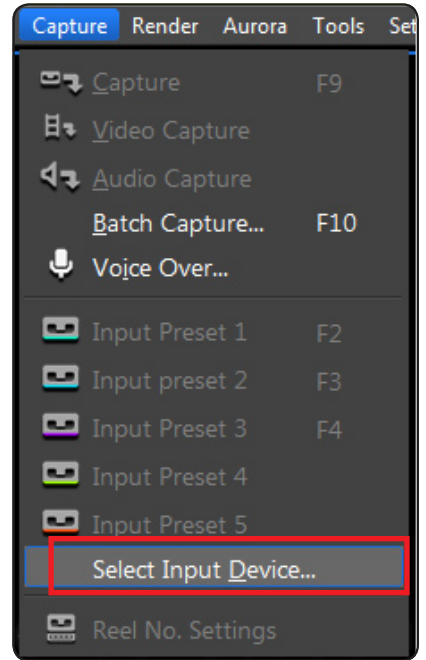
9) Click [Completed] button.

10) Click [Apply] and then [OK] in System Settings screen.

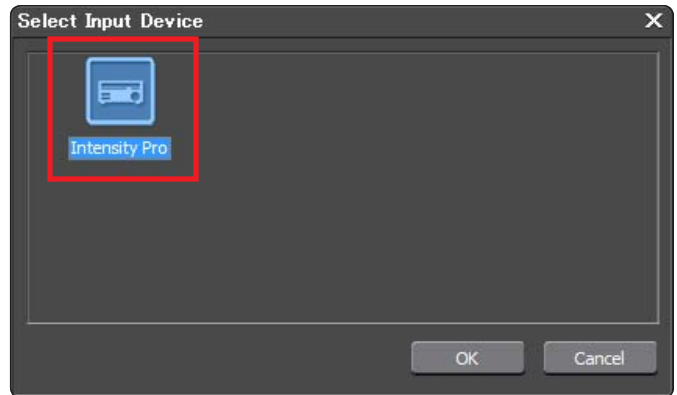


Capture Footage

1) Choose [Capture] > [Select Input Device...].



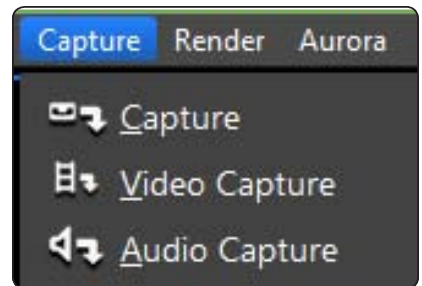
2) Choose created preset and click [OK] button.



3) Choose [Capture] and the capture method (either "Video Capture" or "Audio Capture" supported)

4) Start playback of source equipment and then choose [Capture] menu or press [F9] key.

5) Stop capture and then stop playback of the equipment.



GLOBAL SERVICES



Grass Valley Global Services specializes in the defining of, deployment of, and support of today's dynamic file-based workflows, based on Grass Valley and third-party solutions. With Grass Valley Global Services, you can achieve your operational goals in the most efficient and cost-effective way possible with a partner you can trust.

www.grassvalley.com/support

Define: We help you to define your business and technology requirements and then design solutions to meet them.

Deploy: Our professional service organization, backed up with proven project management methodologies, can take you from design through deployment, commissioning, and training.

Support: We offer a complete Support Agreement portfolio to keep your systems running and help plan for your long-term maintenance needs.

Join the Conversation at **GrassValleyLive** on Facebook, Twitter, and YouTube.

