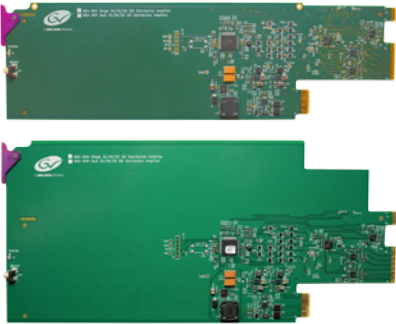
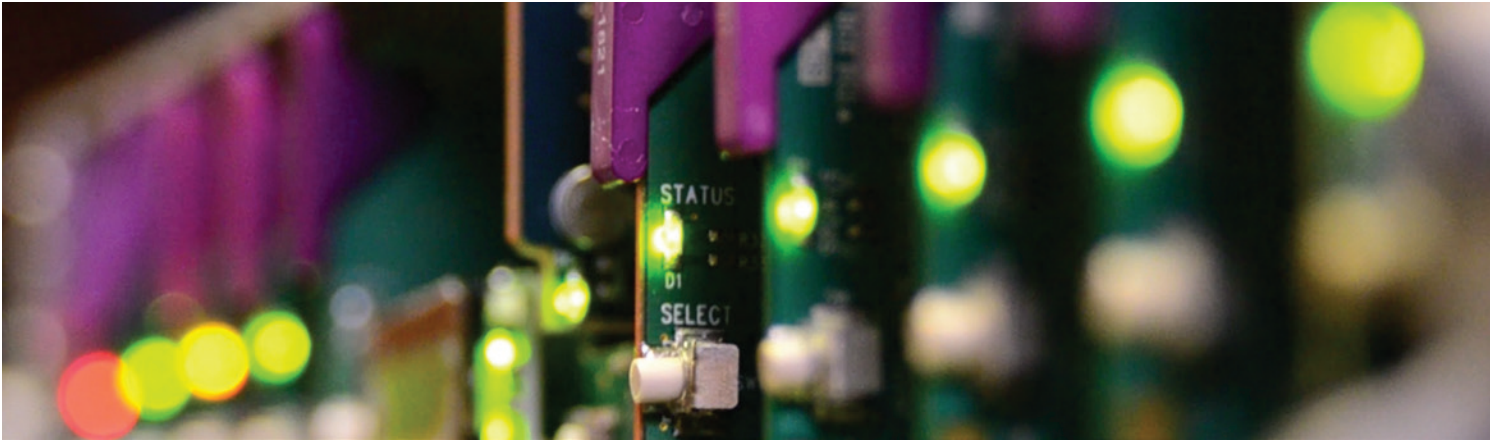


HDA-1951 / HDA-3951

Dual Channel 3G/HD/SD SDI Video Distribution Amplifiers



Dual Channel DAs for Densité 2 and Densité 3 frames.

The HDA-1951 (for Densité-2 series) and HDA-3951 (for Densité-3, Densité-3+ and GV Node series) are dual channel 3G/HD/SD SDI video distribution amplifiers from Grass Valley, a Belden Brand, designed for broadcast and production facilities. The two cards are functionally identical.

The HDA-1951/3951 DAs support a variety of compressed and uncompressed serial digital video signals, with up to dual 1x5 outputs. The HDA-1951/3951 provides up to ten reclocked outputs with automatic inputs equalization for up to 200 meters (656 feet) of cable using Belden 1694A at 1.5 Gb/s and up to 100 meters (328 feet) at 3 Gb/s.

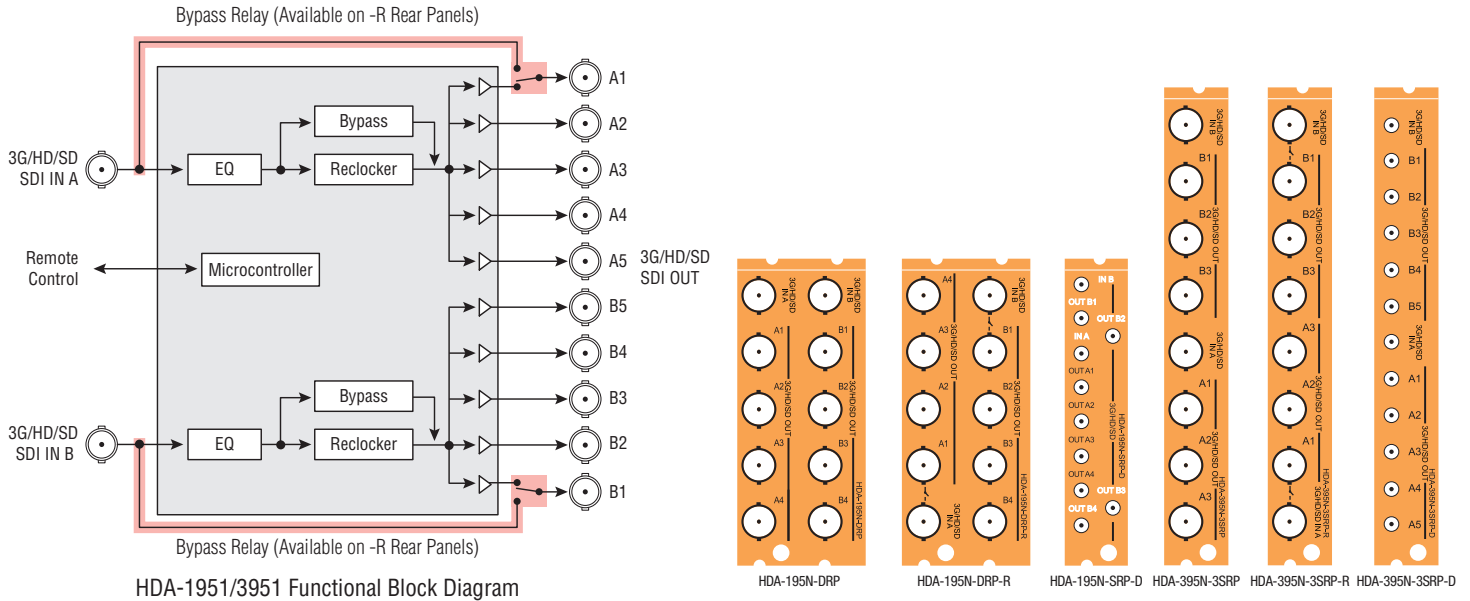
Critical application protection is provided by optional bypass relays available on selected rears.

The HDA-1951 and HDA-3951 are dual channel DAs, while the complementary HDA-1941 and HDA-3941 are single channel DAs sharing the same performance quality, but with a lower density and more outputs per DA. See the HDA-1941/3941 datasheet for more information.

HDA-1951 / HDA-3951 Dual Channel 3G/HD/SD SDI Video Distribution Amplifiers

KEY FEATURES

- Dual 3G/HD/SD SDI inputs
- Supports bit-rates up to 2.97 Gb/s
- Automatic format detection and cable equalization
- All outputs are DVB-ASI compatible
- Up to 8 3G/HD/SD SDI outputs on the HDA-1951 (2 RU)
- Up to 10 3G/HD/SD SDI outputs on the HDA-3951 (3 RU)
- 2 RU and 3 RU versions have the same functionality and performance
- Optional bypass relay protection on both inputs available



SPECIFICATIONS

Electrical Inputs (1 or 2)

Signal:
 SMPTE ST 259M-C (270 Mb/s)
 SMPTE ST 292M (1.485, 1.485/ 1.001 Gb/s)
 SMPTE ST 424M (2.970, 2.970/ 1.001 Gb/s)
 EN50 83-9 DVI-ASI (270 Mb/s)

Cable length:
 400m (1312 ft.) Belden 1694A at 270 Mb/s
 200m (656 ft.) Belden 1694A at 1.485 Gb/s
 100m (328 ft.) Belden 1694A at 2.970 Gb/s

Return loss:
 >15 dB up to 1.5 GHz
 >10 dB from 1.5 GHz to 3 GHz

Electrical Outputs (Up to 10)
Signal:
 SMPTE ST 259M-C (270 Mb/s)
 SMPTE ST 292M (1.485, 1.485/ 1.001 Gb/s)
 SMPTE ST 424M (2.970, 2.970/ 1.001 Gb/s)
 EN50 83-9 DVI-ASI (270 Mb/s, all outputs)

Return loss:
 >15 dB up to 1.5 GHz
 >10 dB from 1.5 GHz to 3 GHz

Jitter (wideband):
 <0.2 UI p-p

Rise/fall time:
 Reclocker on: <135 ps, 20% to 80%, for HD and 3G
 400 – 800 ps, 20% to 80%, for SD
 Reclocker off: <135 ps for all formats (3G, HD, SD)

Processing Performance

Signal path:
 10 bits
Processing delay:
 7 ns typical
Electrical
Power: 2.1W max.

ORDERING

Densité 2 frame
 HDA-1951
 HDA-195N-DRP
 HDA-195N-DRP-R
 HDA-195N-SRP-D

Densité 3 frame
 HDA-3951

 HDA-395N-3SRP
 HDA-395N-3SRP-R
 HDA-395N-3SRP-D

Description
 Dual Channel 3G/HD/SD SDI Video Distribution Amplifiers
 Double rear for dual 1x4 operating mode with BNC connectors
 Double rear for dual 1x4 operating mode with bypass relays and BNC connectors
 Single rear for dual 1x4 operating mode with DIN connectors
 Single rear for dual 1x3 operating mode, with BNC connectors
 Single rear for dual 1x3 operating mode, with bypass relays and BNC connectors
 Single rear for dual 1x5 operating mode, with DIN connectors

Remote control iControl, iControl Solo



WWW.GRASSVALLEY.COM

Join the Conversation at **GrassValleyLive** on Facebook, Twitter, YouTube and **Grass Valley - A Belden Brand** on LinkedIn.



Belden, Belden Sending All The Right Signals and the Belden logo are trademarks or registered trademarks of Belden Inc. or its affiliated companies in the United States and other jurisdictions. Grass Valley and Densité are trademarks or registered trademarks of Grass Valley. Belden Inc., Grass Valley and other parties may also have trademark rights in other terms used herein.

Copyright © 2016 Grass Valley Canada. All rights reserved. Specifications subject to change without notice.