

RoIMIDSRV

RollCall Middleware Services — System Logging and Monitoring Services for RollCall

Securely monitor, log and report events across your system infrastructure with flexible configuration and external alarm notification.

The RollCall Middleware services from Grass Valley extend the capabilities of a RollCall control system by adding a range of backend services that enable secure TCP/IP access to your Infrastructure, real-time and historic logging, remote monitoring and configurable alarming of your Grass Valley infrastructure. This product also provides the core services required for implementing the RollMap and RollSNMP Infrastructure Management System tools.

RollCall Middleware services include the RollCall control panel application (ROLLCALL) and can be used as a standalone monitoring environment or an enabling platform for the advanced system monitoring applications delivered by RollMap Infrastructure Management System and RollSNMP.

The Middleware Services Feature:

Real-time and historic logging of system events — RollCall LogServer provides a real-time system status via an IP socket and also writes all events to disk for continuity purposes. Disk logs can be saved by date or timestamp. These disk logs can be utilized offline for trend analysis and system audits.

TCP/IP connection sharing and security service — IPShare enables PC workstation access to equipment on the RollNet network via TCP/IP. Access to the IPShare service can be restricted by IP address or Hostname. IPShare is ideal for delivering Local and Wide Area Network access to products that do not feature direct Ethernet control capability.

Real-time visual status monitoring — RollView enables a simple “traffic light” color scheme to indicate system status, with configurable alarm status “tabs” to help you segment the reporting of your system into logical functions or physical locations. External notification alarms can be delivered from the monitoring application in a number of ways, including email, SMS, SNMP Trap, audio playback of .wav or mp3 files and GPI output via the IQGPI00-04 modular GPI/O interface card.

Full RollCall control and monitoring network aggregation using RollCall IP Proxy — TCP/IP connection manager to enable connection and logging from multiple IP-enabled RollCall products or discrete RollNet networks.

User-configurable alarm masking for both unit and individual alarms to prevent the occurrence of false alarms.

Does this Product Suit your Application?

- Monitor and report events across your system infrastructure including:
 - Signal input condition
 - Environmental status
 - Power supply and card health status
- Flexible and configurable external alarm notification capability
- Rapid control and monitoring access via configurable tabs
- Secure access to equipment services by password or IP address guest lists
- Operates through Ethernet/TCP/IP network, RollNet interface cards (RollPCI or RollUSB)
- Supports Microsoft Windows 7, Windows XP, Windows 10 and Windows Server 2003/2008/2012/2016

Why Should you Choose this Product?

- Maximize system uptime with centralized monitoring and control
- Intelligent notification and alarming with RollView minimizes staffing requirements by increasing efficiency
- Configurable to specific customer requirements
- Monitor your system from anywhere with true TCP/IP enabled monitoring and control capability
- Middleware services provide the base for RollMap and RollSNMP network management systems

SPECIFICATIONS

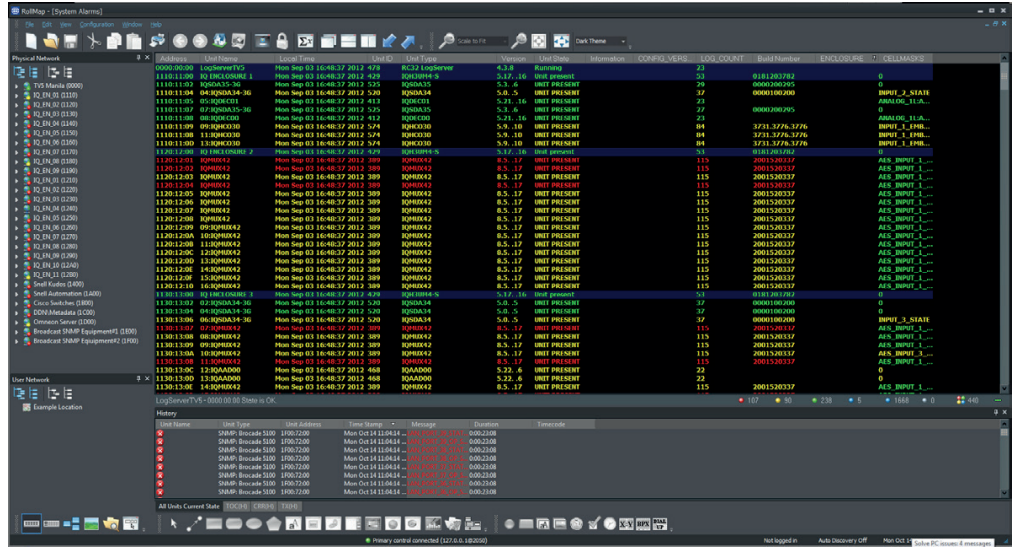
System Requirements

Recommended system specifications for RollMIDSRV:

- 1920 x 1080 or higher screen resolution
- Quad-core CPU
- 6 GB RAM or higher
- Windows Server 2016

Minimum system specifications for RollMIDSRV:

- Dual-core CPU
- 4 GB RAM
- Either Microsoft Windows 7, Windows XP, Windows 10 or Windows Server 2003/2008/2012/2016
- 1280 x 1024 or higher screen resolution



ORDERING

ROLLMIDSRV

RollCall Middleware Services

RollCall Middleware Services for Windows

Licence Information

The RollCall Middleware Services suite provides one licensed copy of each service application to be run in a system installation. There is no restriction on the number of copies of the RollCall Control Panel or RollView Monitoring application that are installed per system.



WWW.GRASSVALLEY.COM

Join the Conversation at **GrassValleyLive** on Facebook, Twitter, YouTube and **Grass Valley** on LinkedIn.



www.grassvalley.com/blog

This product may be protected by one or more patents. For further information, please visit: www.grassvalley.com/patents.

Belden®, Belden Sending All The Right Signals®, the Belden logo, Grass Valley®, GV® and the Grass Valley logo are trademarks or registered trademarks of Belden Inc. or its affiliated companies in the United States and other jurisdictions. Grass Valley products listed above are trademarks or registered trademarks of Belden Inc., GVBB Holdings S.A.R.L. or Grass Valley Canada. Belden Inc., GVBB Holdings S.A.R.L., Grass Valley Canada and other parties may also have trademark rights in other terms used herein.

Copyright © 2020 Grass Valley Canada. All rights reserved. Specifications subject to change without notice.