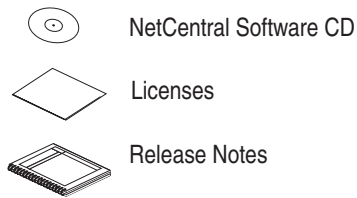


NetCentral Quick Start Guide

071-8470-02

August 2008

Before you begin, gather the NetCentral release CD and the NetCentral documentation you'll need to get started.



Refer to the *NetCentral Installation Guide* for detailed instructions about installing and configuring the NetCentral system.

1. Get ready

A Set up a server with the following minimum requirements:



- Pentium 4 or higher, 2 GHz or higher
- 5 GB hard disk space on the C: system drive
- 1 GB RAM
- Windows Server 2003 with Service Pack 2 or higher
- or —
- Windows XP Professional with Service Pack 2 or higher (NOTE: Windows must be the U.S. English edition)
- Connected to a LAN and able to "ping" devices

B Install the following Windows® components:

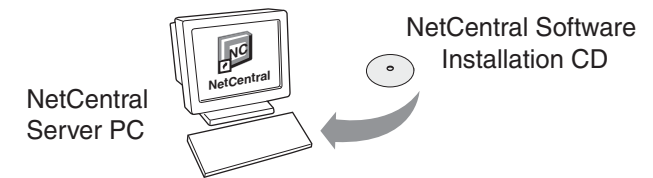
- Internet Explorer
- SNMP Services *
- Internet Information Server (IIS) 4.0 *

* Start | Control Panel | Add/Remove Programs | Add/Remove Windows Components

2. Install prerequisite software

A Microsoft .NET Framework v3.5.

- Insert the NetCentral CD and go to the directory "Prerequisites | Microsoft.NET".
- Start the .NET Framework v3.5 set-up file.
- Follow the on-screen instructions to install.



B Microsoft SQL Server 2005 Express Edition

- On the NetCentral CD, open the directory "SQL 2005 Express".
- Start the SQL set-up file.
- Follow the on-screen instructions to install.

C Verify Windows Firewall settings per the *NetCentral Installation Guide*.

3. Install tools and services

A Configure Web Services.

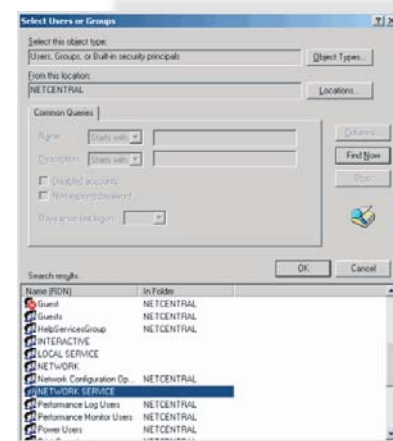
Configuring Web services in Windows allows the NetCentral Web Client to properly monitor devices through the NetCentral server.

B Install 7-zip, file archive software with a high compression ratio.

C Install Adobe® Acrobat Reader, version 6 or higher.

- On the NetCentral CD, go to the directory "Adobe Reader".
 - Follow on-screen instructions to install.
- To download the current version, go to <http://www.adobe.com>.

D Restart the server.



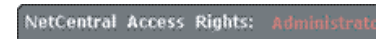
4. Install NetCentral Manager and load device providers

A On the NetCentral CD, open the NetCentral v5.0 Installation file. Follow the installation Wizard. Accept defaults.

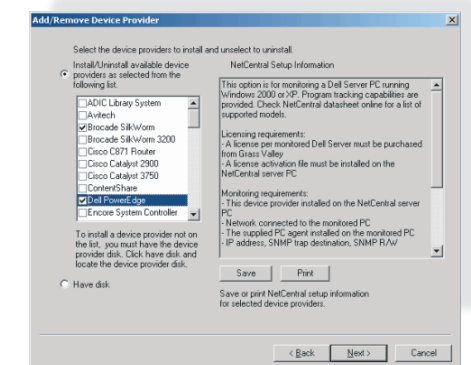
B The license agreements for Microsoft tools are displayed. Scroll down to read each agreement, then click **Yes** to accept the terms and conditions.

C Select the desired device providers.

D Restart the server. Log into Windows as an Administrator, then log into NetCentral as an Administrator.



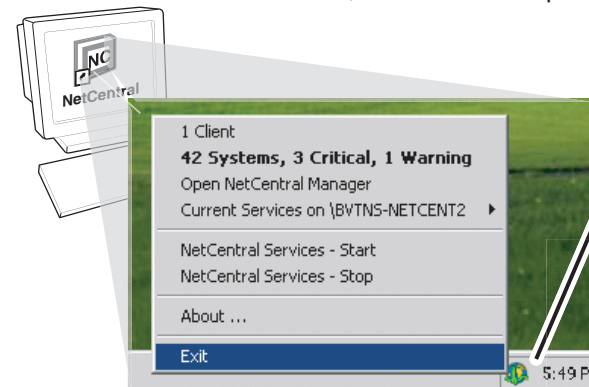
E Complete the NetCentral License Request Wizard. The Wizard asks for customer information and a sales order number. You can find that number on the "NetCentral Software License" page.



Continue with Quick Start procedures on the reverse side ...

5. Install NetCentral service pack

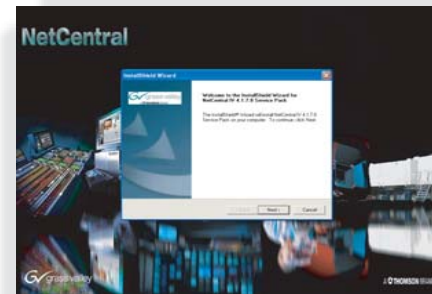
- A** Go to <ftp://ftp.thomsongrassvalley.com/NetCentral/5.0> and check for any available Service Pack that is higher than the NetCentral software version you are currently using. If there is no new Service Pack available, skip to Step 6. Otherwise, follow these steps:



- B** Right-click the NetCentral global heartbeat icon on the system tray and exit NetCentral.

- C** Install the Service Pack.

- D** Restart the server.

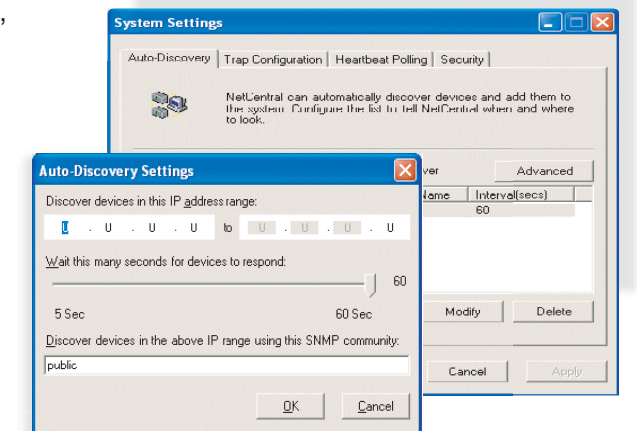


6. Add devices to NetCentral

There are several ways to add devices. Before you begin, verify that the appropriate device providers have been installed for each device type to be monitored.

- A Automatically add devices:**
Auto-Discovery is the default method used to add NetCentral-compatible devices automatically at start-up. (After initial configuration, turn off Auto-Discovery using Configure | Auto-Discovery.)

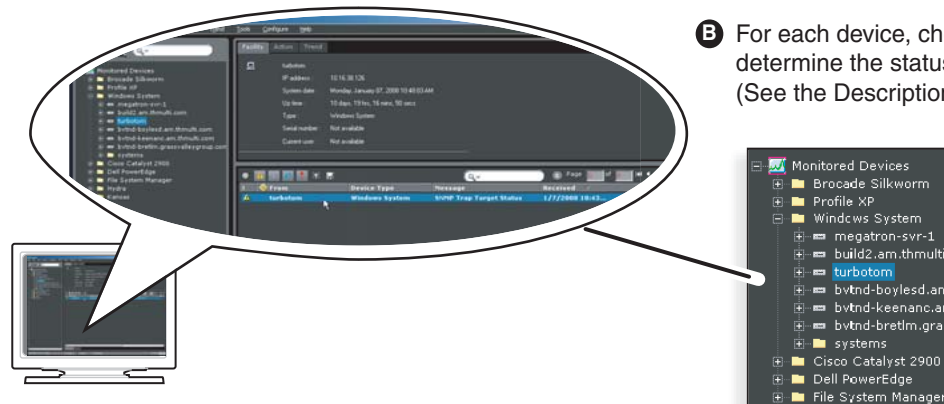
- B Specify IP address range:**
With more than one network, specify the IP address range where you want NetCentral to search for devices.



- C Add devices manually:**
Click **File | New | Device** and type the name or IP address of the device you want to add.

7. Verify SNMP messages

- A** Ensure that the SNMP trap destination for each monitored device is configured to the NetCentral Manager. See individual device documentation, or refer to the *NetCentral Installation Guide* for complete SNMP instructions.



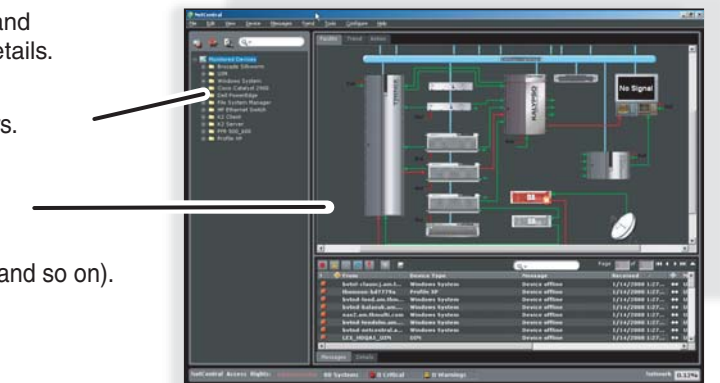
- B** For each device, check the Message View area to determine the status of the SNMP trap for the device. (See the Description pane.)

- C To add more devices:**
- First, add any new device providers.
 - Verify that SNMP is configured on the new devices.
 - Use any of the methods in Step 6 to add devices.

8. Customize the NetCentral interface and notifications

NetCentral allows you to customize the user interface and notifications to fit the facility. See the *User Guide* for details.

- A** Organize devices in the Tree view by creating folders.
- B** Customize the Facility view with drawings that reflect installed devices.
- C** Customize Preferences (messages, alerts, e-mails and so on).
- D** Create message filters as required.



9. Send request for permanent NetCentral licenses

During installation, a text message for a license request is placed on the desktop. Remember to e-mail this license request file as soon as possible to NC-Licenses@thomson.net.