

T2

INTELLIGENT DIGITAL DISK RECORDER

User Manual — Remote Control —



15 October, 2009

Cautions

- (1) It is prohibited to copy a part or all of this product without prior permission.
- (2) The contents or specifications of this product may be changed without prior notice.
- (3) We have prepared the contents of this product to the best of our ability; however if you have any questions about the contents, or if there are any errors or missing items, please contact Grass Valley.
- (4) However we do not take any responsibility for malfunctions arising from use, irrespective of the points outlined in (3).
- (5) Irrespective of whether it was due to a usage error, Grass Valley takes no responsibility for extraordinary, incidental or derivative claims, including those for lost earnings generated by the application of this product.
- (6) It is prohibited to analyze, reverse engineer, decompile or disassemble any of the items included with this product, including the software, hardware and manual.
- (7) Microsoft and Windows are registered trademarks of the Microsoft Corporation, USA.
- (8) DVCPRO HD is the trademark of the Panasonic Corporation.
- (9) HDV and HDV logos are the trademarks of Sony Corporation and Victor Company of Japan, Limited (JVC).
- (10) Other product names or related brand names are trademarks or registered trademarks of their respective companies.

About this manual

- The screens used as examples in this manual are those of the development stage, so they may vary from those in the final product.
- If there are any variations between the explanation in this manual and the actual application method, priority is given to the actual application method.
- This manual is written for people who have a basic knowledge of how to use a computer. If there are no special instructions, perform the same operation as a normal computer operation.
- In this manual, the system of the T2 is called "Workstation".

Warning

- Health precautions

In rare cases, flashing lights or stimulation from the bright light of a computer display or TV monitor may trigger temporary epileptic seizures or loss of consciousness. It is believed that even individuals whom have never experienced such symptoms may be susceptible. If you or close relatives have experienced any of these symptoms, consult a doctor before using this product.

Remote Control

Overview

With the remote controls of the T2, the following controls and actions are available.

- As a device, T2 receives commands input via the REMOTE RS422 port on the T2 rear panel.
- T2 controls external devices with the commands output via the REMOTE RS422 port on the T2 rear panel.
- As a device, T2 receives commands input via Ethernet.
- T2 controls external devices with commands output via Ethernet.
- T2 supports BVW protocol partially (RS422 only).
- T2 supports AMP protocol partially (Ethernet only).
- According to the GPI input, the corresponding actions are performed.
- According to the Playlist > Event settings, the corresponding GPI triggers are output.

Functions

1 R1 - VTR mode

- As a controller (master), T2 controls the external device (VTR).
- When "In-Out Rec" is executed, T2 controls the VTR so as to capture the range between the specified timecodes.

2 P1/P2 – Remote mode

As a device (slave), T2 receives the commands sent by external controllers.

2-1 BVW

BVW commands

COMMAND			RETURN			
00	11	DEVICE TYPE REQUEST	12	11	DEVICE TYPE RETURN	○
20	01	PLAY				○
20	04	STANDBY OFF				○
20	05	STANDBY ON				○
20	10	FAST FWD				○
2X	11	JOG FWD				○
2X	12	VAR FWD				○
2X	13	SHUTTLE FWD				○
2X	20	REWIND				○
2X	21	JOG REV				○
2X	22	VAR REV				○
2X	23	SHUTTLE REV				○
24	31	CUE UP WITH DATA				○
20	54	ANTI-CLOG TIMER DISABLE				△
20	55	ANTI-CLOG TIMER ENABLE				△
44	00	TIMER-1 PRESET				○
40	08	TIMER-1 RESET				○
41	36	TIMER MODE SELECT				○
61	0C	CURRENT TIME SENSE	74	00	TIMER-1 DATA	○
			74	04	LTC TIME DATA	○
			78	04	LTC TIME & UB DATA	○
			74	05	LTC UB DATA	○
			74	06	VITC TIME DATA	○
			78	06	VITC TIME & UB DATA	○
			74	07	VITC UB DATA	○
			70	0D	REQUEST TIME MISSING	○
61	20	STATUS SENSE	7X	20	STATUS DATA	○
60	2E	COMMAND SPEED SENSE	71	2E	COMMAND SPEED DATA	○
60	36	TIMER MODE SENSE	71	36	TIMER MODE DATA	○

The symbols in the table indicate the following:

- 1) Commands marked with ○ are available for execution when the T2 is performing a relevant operation. If a value is listed in the RETURN column, "RETURN + DATA" is returned. If the column is empty, "10 01 ACK" is returned.
- 2) Commands marked with △ return "ACK" or "STATUS" as "RETURN", but do not execute the actual operation.
- 3) Start Delay value = 0F

2-2 AMP

AMP commands

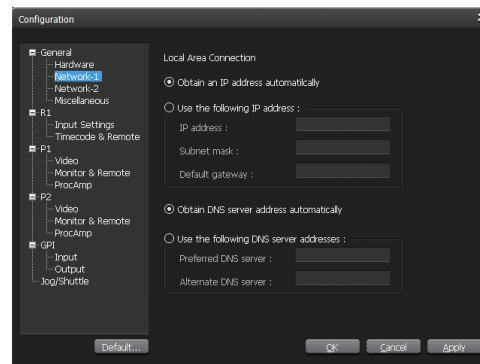
COMMAND	
20.00	Stop
20.01	Play
20.10	Fast Forward
21.13	Shuttle Forward <Only Pause(0x) is supported>
24.11	Jog Forward
20.20	Rewind
24.21	Jog Reverse
22.22	Variable Reverse <Only reverse playback (-1x) is supported>
4A.14	In Preset <Loading only one Clip (Playlist) is supported>
4A.15	Out Preset <Only returns "ACK" without executing the actual operation>
40.41	Auto Mode On <Only returns "ACK" without executing the actual operation>
41.42	Set Loop Playback Mode
61.0C	Current Time Sense
61.20	Status Sense
A0.16	ID Loaded Request
A2.09	Get Thumbnail
A2.0E	Set Working Folder
A0.0F	Get Working Folder
A2.14	List First ID
A1.15	List Next ID
A2.17	ID Duration Request
A2.25	ID Start Time Request
A0.2A	List First Folder
A0.2B	List Next Folder

Using AMP commands

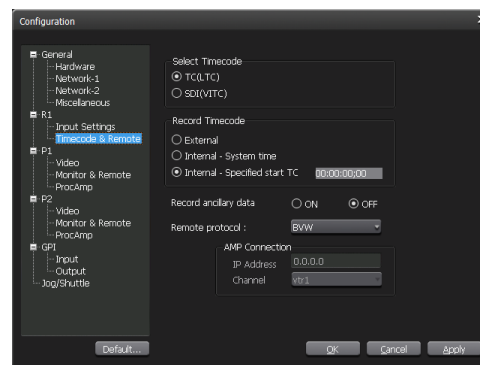
Before using the AMP commands, make sure that the network settings have been established as below.

* The procedures in the Workstation mode are explained here.

- 1 Click the **Config** button on the T2, choose **General > Network1/2** to open the setting dialog, and set the IP address of the T2.



- 2 Click the **Config** button on the T2, choose **R1 > Timecode & Remote** to open the setting dialog, and set the IP address of the connected device.



3 GPI input

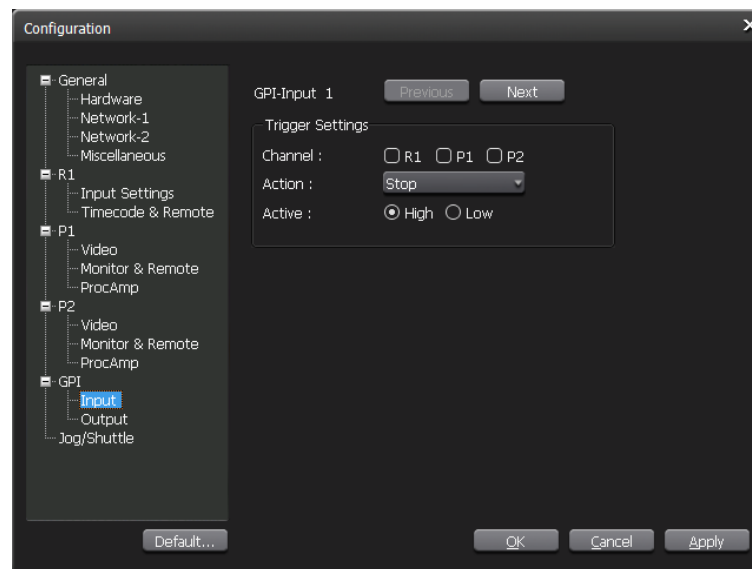
- Via the GPI input port (6 pins), T2 can be controlled.

Input settings can be specified on the setting dialog, displayed by pressing the **Config** button and choosing **GPI**.

* The procedures in the Workstation mode are explained here.

Available options on GPI Input settings

* See the "T2 User Manual – Workstation mode –" for details.



- Trigger channel (R1, P1, P2) : Multiple channels can be simultaneously chosen
- Trigger Action
 - play
 - stop
 - record
 - rewind
 - ff
 - cue start/end
 - eject
 - preview
 - cue next/prev event
 - VAR playback

- Active
 - High
 - Low

* If the operation corresponding to the input trigger cannot be executed, nothing happens.

* Regardless of the operation mode or lock status of the GUI, GPI inputs can be received.

4 GPI output

- Via the GPI output port (6 pins), triggers are output according to the T2 operation.

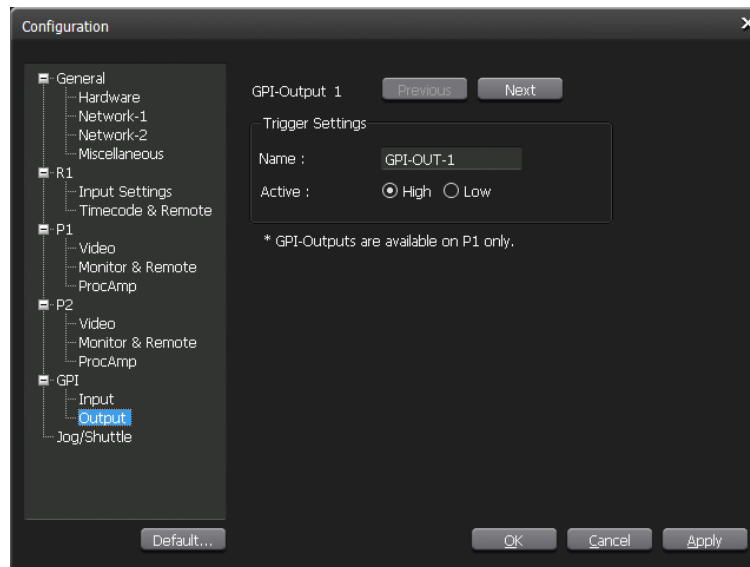
Output Pin settings can be specified on the setting dialog, displayed by pressing the **Config** button and choosing **GPI**, while output Trigger settings can be specified on the setting dialog, displayed by right-clicking on an event list, and choosing **Properties > GPI**.

* The procedures in the Workstation mode are explained here.

* GPI output can be output only when issued from content loaded on the P1 channel.

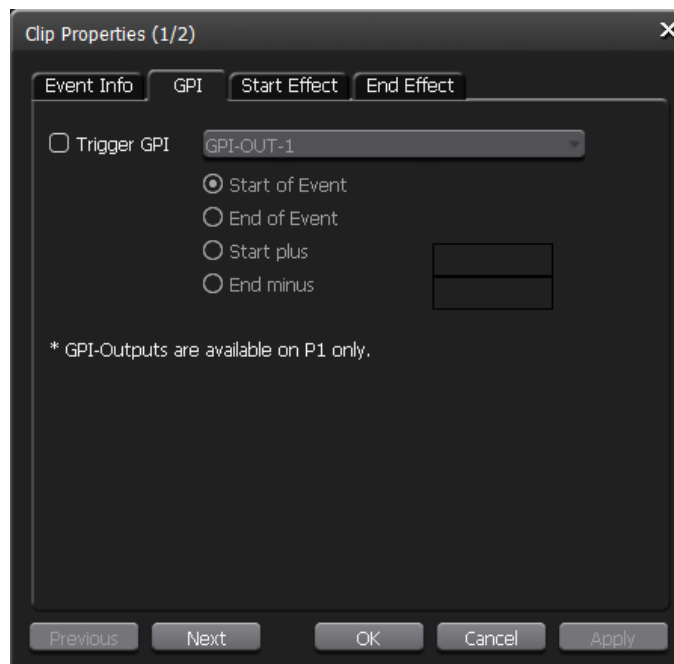
Available options on GPI Output settings

* See the "T2 User Manual – Workstation mode –" for details.

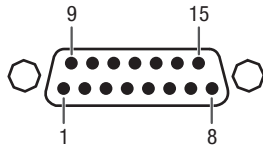


- Name
- Active
 - High
 - Low

GPI tab



GPI I/O connector pinouts

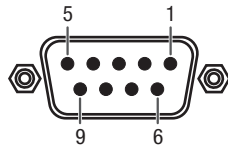


Pin	Signal
1	Output 1
2	Output 2
3	Output 3
4	Output 4
5	Output 5
6	Output 6
7	NC
8	Common Ground

Pin	Signal
9	Input 1
10	Input 2
11	Input 3
12	Input 4
13	Input 5
14	Input 6
15	NC
SHELL	Common Ground

Note T2 iDDR software supports outputs 1-6 and inputs 1-6 only. Pin 7 and Pin 15 are not used.

RS422 I/O connector pinouts



R1
D-Sub 9pin

Pin	Signal
1	GND
2	RECEIVE-
3	TRANSMIT+
4	GND
5	NC
6	GND
7	RECEIVE+
8	TRANSMIT-
9	GND

P1/P2
D-Sub 9pin

Pin	Signal
1	GND
2	TRANSMIT-
3	RECEIVE+
4	GND
5	NC
6	GND
7	TRANSMIT+
8	RECEIVE-
9	GND