

8964DEC/-FS

4-CH NTSC/PAL TO SDI DECODER MODULE

Release Notes

SOFTWARE VERSION 1.1.0

071825803
JANUARY 2005

the most watched worldwide

Contacting Grass Valley

Region	Voice	Fax	Address	Web Site
North America	(800) 547-8949 Support: 530-478-4148	Sales: (530) 478-3347 Support: (530) 478-3181	Grass Valley P.O. Box 599000 Nevada City, CA 95959-7900 USA	www.thomsongrassvalley.com
Pacific Operations	+852-2585-6688 Support: 852-2585-6579	+852-2802-2996		
U.K., Asia, Middle East	+44 1753 218 777	+44 1753 218 757		
France	+33 1 45 29 73 00			
Germany, Europe	+49 6150 104 782	+49 6150 104 223		

Copyright © Thomson Broadcast and Media Solutions All rights reserved.

Grass Valley Web Site

The www.thomsongrassvalley.com web site offers the following:

Online User Documentation — Current versions of product catalogs, brochures, data sheets, ordering guides, planning guides, manuals, and release notes in .pdf format can be downloaded.

FAQ Database — Solutions to problems and troubleshooting efforts can be found by searching our Frequently Asked Questions (FAQ) database.

Software Downloads — Software updates, drivers, and patches can be downloaded.

Version **1.1.0**
JANUARY 2005

8964DEC Release Notes

Introduction

This document provides information on the latest release of the software for the 8964DEC/-FS module. Read this document completely before attempting to download the latest software.

Pertinent reference documents are available on-line at www.thomson-grassvalley.com or hard copies can be ordered from Grass Valley Sales or Service.

This document details:

- Summary of software release features,
- Hardware Modifications (Field Modification Notes),
- Acquiring and updating software, and
- Accessing reference documents.

Note Check your module assembly number as described in [Table 1 on page 5](#) to determine if a hardware modification is necessary before proceeding.

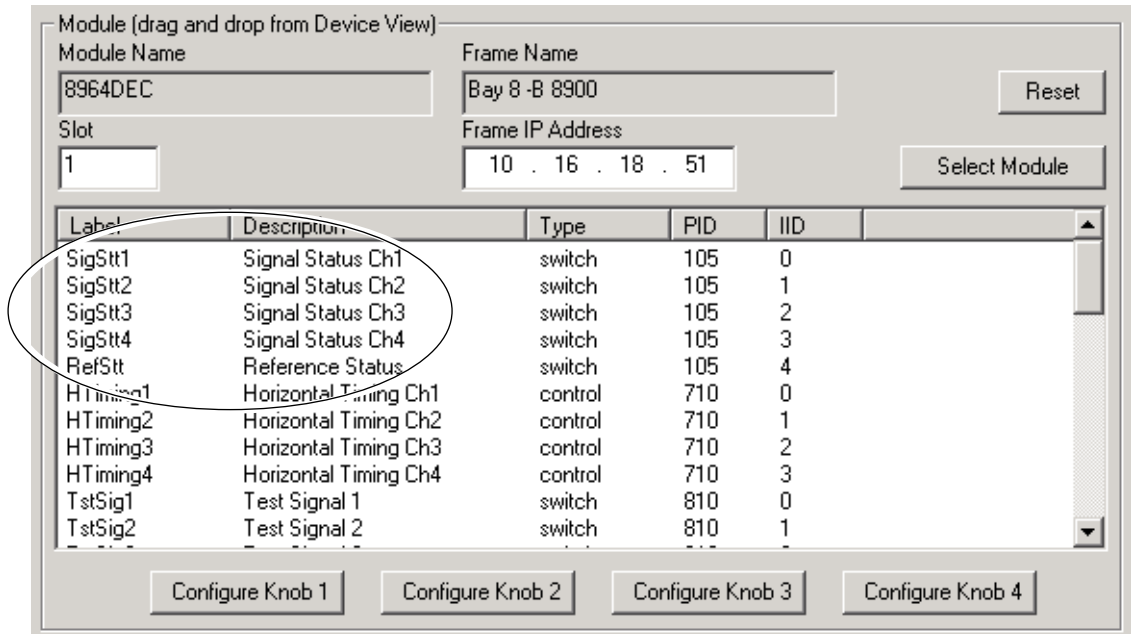
Version 1.1.0 Software Release

The latest software release for the 8964DEC/-FS module offers the following new feature:

- Newton Modular Control System now monitors signal status of individual input composite video channels and Reference video input.

As illustrated in [Figure 1](#), the status of the four individual composite video input channels and the video reference input status are now reported as read-only items in the Newton Modular Control System for the NewtonPC software and NewtonRM Rack Mount Control Panels. Refer to the Newton Modular Control System Instruction Manual for instructions on using Newton.

Figure 1. 8964DEC/-FS Newton Parameters



Hardware Modifications

Hardware modifications may be necessary on some versions of the module to enable updating or to be compatible with the latest software. Modification instructions are given in the form of Field Modification Notes (FMN) available on-line or in hard copy from Grass Valley (see *Accessing Reference Documents* on page 8).

Refer to [Table 1](#) below for an overview of the module versions and any necessary modifications.

Table 1. Hardware Modifications

Module Assembly Number	FMN Number	Comments
671-6471-01 B1 and earlier	075075100	This modification requires soldering a jumper wire on the circuit board.

Acquiring and Updating Software

Software upgrade packages are available from the Grass Valley Customer Service FAQ site or the public FTP site. The free FTP server software is also available.

You may connect to the Grass Valley FAQ site to access the latest module and free FTP Server software and subscribe to software updates automatically at the following URL:

<http://gvg.custhelp.com>

The information provided here is the most up-to-date. Using this link is recommended so that when new versions of software are released, you are notified by email.

To find the latest available 8900 software on the FAQ site, do the following:

1. Navigate to the FAQ site and click on the first FAQ in the list labeled **DOWNLOAD THE LATEST SOFTWARE?**
2. Select the link to the correct module software.

If you cannot find the software you need you may also go directly to the Thomson Grass Valley FTP site to download the software at the following location:

<ftp://ftp.thomsongrassvalley.com/pub/modular>

FTP Method

If you do not have NetConfig, use the detailed FTP Server download procedure outlined in the 8900NET Instruction Manual available on-line.

NetConfig Method

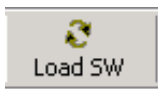
To use this method, you must have the NetConfig Networking Application option running on a networked PC on the same subnet as the frame with an 8900NET module and the 8964DEC/-FS to be updated. Two files are required for updating software, an .fld and an .sw2 for the module being updated. For acquiring software, refer to [Acquiring and Updating Software on page 5](#).

To use NetConfig for software updating, follow the steps below:

1. Locate the PC directory in which the NetConfig application has been installed. The default location is C:\Program Files\Grass Valley Group\NetConfig.

If this is not where NetConfig was installed, right-click on the NetConfig desktop shortcut and select **Properties**, click on the **Shortcut** tab and note the location of the installation in the **Start In** field.

2. Create a subdirectory named **modular** (if one does not already exist) in the main NetConfig directory.
3. Copy the .fld file for the update into this modular subdirectory in the Netconfig directory.
4. Copy the .sw2 file for the module update into the main NetConfig directory.
5. Open NetConfig and click on the **Load SW** icon on the top toolbar (shown at left).



6. The NetConfig Update Devices window will open showing the device types available for update ([Figure 2 on page 7](#)).

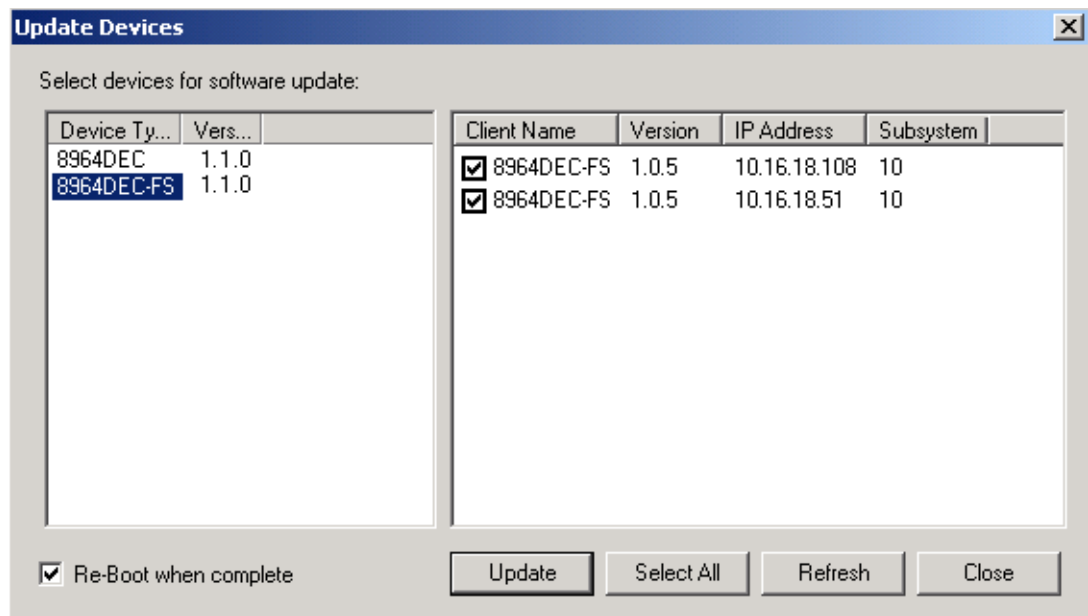
These device types and versions represent the .sw2 and .fld files loaded in the NetConfig main directory and the modular subdirectory. These files must be present on the PC running NetConfig for them to appear in the Device Type list.

7. Select the Device Type you wish to update. In the example in [Figure 2](#), the 8964DEC-FS Device Type has been selected. The modules accessible on the network of this device type will appear in the window on the right under the **Client Name** heading as shown.

The current software loaded on each module will be listed as well as the IP address of the module client.

8. Check the corresponding **Client Name** boxes to upgrade the modules or use the **Select All** button to update all modules of this type present on the network.
9. Press the **Update** button to perform the update to all the selected modules.
10. Once the updating is complete, select the **Refresh** button to make sure all selected modules have updated to the correct software version which will be reported in the window.

Figure 2. NetConfig Update Devices Window



For more information on using NetConfig, refer to the NetConfig Networking Application Instruction Manual which is included with the option, available on the Thomson Grass Valley web site, and may also be present in the NetConfig directory during some product installations (Newton Control Panel installation is one example).

Accessing Reference Documents

For on-line access to reference documents referred to in these Release Notes, navigate to the following URL:

<http://www.thomsongrassvalley.com/docs/>

Select **Broadcast Products**, then the **Modular Products** link and scroll through the available documents. All of the documents referred to may also be ordered in hard copy from any Grass Valley Sales or Customer Service source. Refer to *Contacting Grass Valley* at the front of this document.