

# NewsEdit LTS

DIGITAL NEWS EDITOR

Install Guide



SOFTWARE VERSION 5.0

071832500  
MAY 2004

*the most watched worldwide*

## Copyright

Copyright © 2004 Thomson Broadcast and Media Solutions, Inc. All rights reserved. Printed in the United States of America.

This document may not be copied in whole or in part, or otherwise reproduced except as specifically permitted under U.S. copyright law, without the prior written consent of Thomson Broadcast and Media Solutions, Inc., P.O. Box 59900, Nevada City, California 95959-7900

## Trademarks

ContentShare, Grass Valley, NewsEdit XT, NewsQ, NewsQ Pro, NewsShare, Media Manager, and Profile are either registered trademarks or trademarks of Thomson Broadcast and Media Solutions in the United States and/or other countries. Other trademarks used in this document are either registered trademarks or trademarks of the manufacturers or vendors of the associated products. Thomson Broadcast and Media Solutions products are covered by U.S. and foreign patents, issued and pending. Additional information regarding Thomson Broadcast and Media Solutions' trademarks and other proprietary rights may be found at [www.thomsongrassvalleygroup.com](http://www.thomsongrassvalleygroup.com).

## Disclaimer

Product options and specifications subject to change without notice. The information in this manual is furnished for informational use only, is subject to change without notice, and should not be construed as a commitment by Thomson Broadcast and Media Solutions. Thomson Broadcast and Media Solutions assumes no responsibility or liability for any errors or inaccuracies that may appear in this publication.

## U.S. Government Restricted Rights Legend

Use, duplication, or disclosure by the United States Government is subject to restrictions as set forth in subparagraph (c)(1)(ii) of the Rights in Technical Data and Computer Software clause at DFARS 252.277-7013 or in subparagraph c(1) and (2) of the Commercial Computer Software Restricted Rights clause at FAR 52.227-19, as applicable. Manufacturer is Thomson Broadcast and Media Solutions, Inc., P.O. Box 59900, Nevada City, California 95959-7900 U.S.A.

## Revision Status

Rev Date	Description
May 25, 2004	Release for Software Version 5.0

# ***Installing NewsEdit LT***

---

Use these instructions to install the NewsEdit LT software on the Dell Latitude D800 Laptop PC.

To install NewsEdit LT, follow these steps:

1. Replace the keyboard with the Thomson Grass Valley color keyboard.
2. Set up Windows for optimal performance with NewsEdit LT.
3. Uninstall any previous versions of NewsEdit or Profile software from the PC.
4. Install the Profile software from the NewsEdit LT CD-ROM.
5. Install the NewsEdit LT software from the NewsEdit LT CD-ROM.
6. Install any options for NewsEdit LT—titling or external controllers.
7. Obtain a License Number from Thomson Grass Valley.



## Step 1: Replace the Dell D800 Keyboard

Your NewsEdit LT software kit comes with a color keyboard that makes editing with NewsEdit LT quick and easy. You should replace the keyboard that ships with your laptop with the color NewsEdit keyboard.

Please note that these instructions are taken from the Dell Latitude D800 Service Manual; refer to that document on the Dell website at [www.dell.com](http://www.dell.com) for more information.

>>> **CAUTION:** *Before performing the following procedure, read the safety instructions in your System Information Guide.*

*To avoid electrostatic discharge, ground yourself by using a wrist grounding strap or by periodically touching an unpainted metal surface (such as the back panel) on the computer.*

To replace your keyboard:

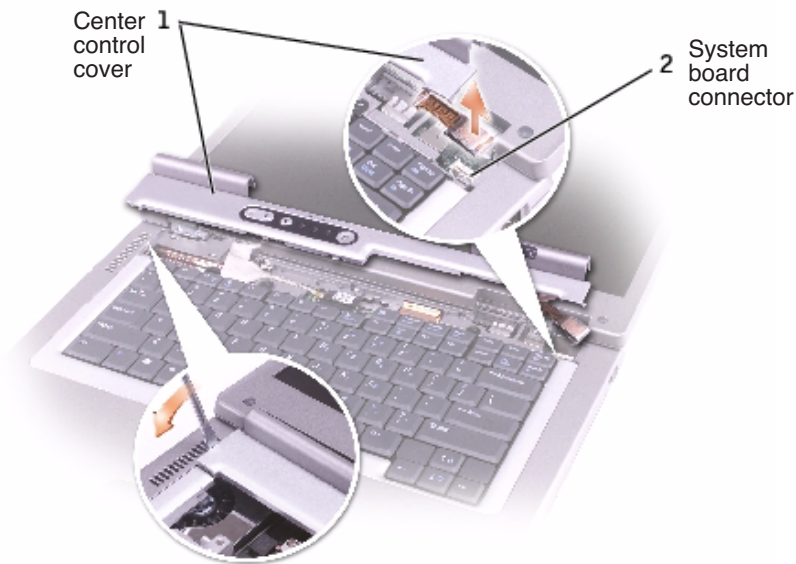
1. Turn the computer right-side up and open it.



---

## Step 1: Replace the Dell D800 Keyboard

2. Remove the center control cover:
  - a. Open the display all the way (180 degrees) so that it lies flat against your work surface.
  - b. Starting on the left side of the computer, use a plastic scribe or flat-blade screw driver to pry up the center control cover.
  - c. Disconnect the center-control-cover flex cable from the system board connector using the pull-tab.
  - d. Lift the center control cover away from the computer, and lay it aside.





---

## Installing NewsEdit LTS

3. Remove the keyboard:
  - a. Remove the two M2.5 x 6-mm screws across the top of the keyboard.  
  
**>>> CAUTION: The keycaps on the keyboard are fragile, easily dislodged, and time-consuming to replace. Be careful when removing and handling the keyboard.**
  - b. Rotate the keyboard up and slide it forward.
  - c. Hold the keyboard up and slightly forward to allow access to the keyboard connector.
  - d. Pull up on the keyboard connector tab to disconnect the keyboard connector from the system board.



4. Reverse these instructions to install the Thomson Grass Valley color keyboard.

## **Step 2: Set Up Windows to Use NewsEdit LT**

You need to configure several Windows settings in order to use NewsEdit LT.

### **Updating the Display Adapter Driver**

1. Insert the NewsEdit LT CD-ROM into the computer's CD-ROM drive.
2. Browse to **D: | Drivers | NVidia for DELL D800**.
3. Double-click **R65893.exe**.
4. Follow the prompts to load the driver.
5. Reboot your computer when prompted.

### **Setting Display Properties**

1. Right-click on the Desktop and select **Properties**.  
The Display Properties window appears.
2. Click the Desktop tab:
  - a. Click **Customize Desktop**.
  - b. In the Desktop icons section, check **My Computer**, **My Network Places**, and **Internet Explorer**.
  - c. Click **Apply**.
3. Click the Appearance tab:
  - a. Under Windows and buttons:, select **Windows Classic Style**.
  - b. Click the **Effects** button, check **Use the following method to smooth edges of screen fonts**, and select **Standard** from the drop-down list.
  - c. Deselect **Use large icons**.
  - d. Click **OK**.
  - e. Click **Apply**.
4. Click the Settings tab:
  - a. The Monitor 1 icon should be selected.



- b. Set the screen resolution to at least **1024 x 768** (**1200 x 800** is recommended).
- c. Select **Highest (32 bit)** for the Color Quality.
- d. Click **Apply**.

## **Adjusting System Performance Settings**

1. Right-click on My Computer and select **Properties**.
2. Click the Advanced tab.
3. Under Performance, click the **Settings** button.
4. In the Visual Effects tab, select **Adjust for best performance** and click **Apply**.
5. Click the Advanced tab.
6. Under Virtual Memory, click the **Change** button.
7. Select Custom Size and set both the Initial Size and the Maximum Size to **1024**.
8. Click **Set**.
9. Click **OK** three times to close the windows.

## **Setting the Network Access Security Mode**

1. From the Start menu, select **Settings | Control Panel**.
2. Double-click **Administrative Tools**.
3. Select **Local Security Policy | Local Policies**.
4. Under Security Options, double-click **Network access: Sharing and security model for local accounts**.
5. Select **Classic-local users authenticate as themselves** from the drop-down menu.
6. Click **OK**.
7. Close all windows.



## **Setting User Account Options**

1. From the Start menu, select **Settings | Control Panel**.
2. Double-click **User Accounts**.
3. Click **Change the way users log on or off**.
4. Uncheck both options: **Use the Welcome Screen** and **Use Fast User Switching**.
5. Click **Apply Options**.
6. Close the window.

## **Installing Critical Windows Updates**

It is highly recommended that you install any critical Windows updates. Open Internet Explorer, select **Tools | Windows Update** and follow the instructions.

## **Step 3: Uninstall Previous Versions of Software**

If your NewsEdit LT is a new system, you can skip these instructions.

If you are upgrading your NewsEdit LT software, you need to remove any previous versions of Profile and NewsEdit software before installing the new software.

To uninstall Profile and NewsEdit software:

1. From the Windows desktop, choose **Start | Settings | Control Panel | Add/Remove Programs**.
2. Find the ProfileXP item, click it to expand, and click **Remove**.
3. Find the NewsEdit item, click it to expand, and click **Remove**.

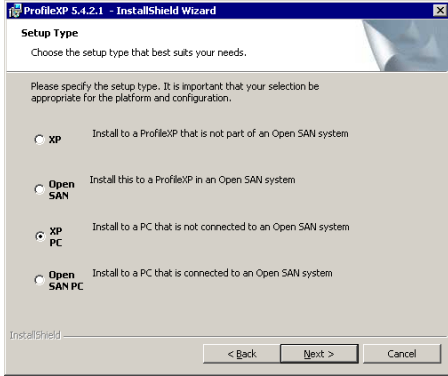


## Step 4: Install the Profile Software

NewsEdit LT requires Profile software drivers to be installed prior to installing the NewsEdit LT software.

To install the Profile software on your NewsEdit LT machine:

1. Insert the NewsEdit LT CD-ROM into the machine's CD-ROM drive.  
The installation screen appears.
2. Click the **Install** button next to Profile Software Installer.
3. Install the software following these instructions:

On this screen...	Do this...
Welcome	Click <b>Next</b> .
License Agreement	Read and accept, then click <b>Next</b> .
Setup Type	<p>Select <b>XP PC</b> and click <b>Next</b>.</p>  <p>&gt;&gt;&gt; <b>WARNING: The other setup types are for installing Profile software on a Profile Video Server or when using an Open SAN storage system and should never be used on a NewsEdit LT computer.</b></p>
Ready to Install	Click <b>Install</b> .
Installation Complete	Click <b>Finish</b> . The computer prompts you to reboot so the new settings take effect.

## Step 5: Install the NewsEdit LT Software

To install the NewsEdit LT software on your computer:

1. Insert the NewsEdit LT CD-ROM into the machine's CD-ROM drive.
2. Click the **Install** button next to the NewsEdit LT Installer.

***NOTE:** If you have a previous version of NewsEdit software on your computer that you haven't removed, the system detects the software and displays a message. Click **OK** to close the message and click **Yes** to uninstall the previous version of software.*

3. Follow the directions below for using Local or Shared Storage. If your system is part of an Open SAN system or connected to Network Attached Storage (NAS), use the instructions for Shared Storage; otherwise, use the instructions for Local Storage.

### Local Storage System

Follow these instructions if you are installing NewsEdit LT on a system using local storage:

On this screen...	Do this...
Welcome	Click <b>Next</b> .
Select Destination Directory	Leave set at the default location and click <b>Next</b> .
Select Shared or Local Installation	Select <b>Local</b> and click <b>Next</b> .
Specify Directory for Video and Audio Files	Leave set at the default location and click <b>Next</b> .
Ready to Install	Click <b>Next</b> to begin the installation.
Installation Complete	Click <b>OK</b> to close the installation program. The computer prompts you to reboot so the new settings take effect.

Once the computer reboots, a System Self Test runs, testing your software configuration and software versions.



## Shared Storage System

Follow these instructions if you are installing NewsEdit LT on a system using shared storage.

***NOTE: Before you install the NewsEdit LT software on a shared storage system, you need to connect the computer to the shared storage and be able to see the Database System Manager (DSM) on the network. See the documentation that came with your Network Attached Storage (NAS) system for more information.***

On this screen...	Do this...
Welcome	Click <b>Next</b> .
Select Destination Directory	Leave set at the default location and click <b>Next</b> .
Select Shared or Local Installation	Select <b>Open SAN</b> or <b>NAS</b> depending on your storage configuration, and click <b>Next</b> .
Specify the Servers for the Shared Database	Enter the names of the primary and secondary (if applicable) File System Managers (or Database System Managers for the NAS system) and click <b>Next</b> .
Specify Directory for Shared Video and Audio Files	Leave set at the default location and click <b>Next</b> .
Specify Directory for AV Cache Files	Leave set at the default location and click <b>Next</b> .
Specify Location for Shared Thumbnails	Leave set at the default location and click <b>Next</b> .
Specify Directory for Local Video and Audio Files	Leave set at the default location and click <b>Next</b> .
Ready to Install	Click <b>Next</b> to begin the installation.
Installation Complete	Click <b>OK</b> to close the installation program. The computer prompts you to reboot so the new settings take effect.

Once the computer reboots, a System Self Test runs, testing your software configuration and software versions.

## Step 6: Install NewsEdit LT Options

If you have purchased any of the NewsEdit LT options, Titling or External Controllers, use the instructions below to install the component.

### NewsEdit Titling

To install the Titling plug-in:

1. Insert the NewsEdit LT CD-ROM into the machine's CD-ROM drive.
2. Navigate to **D: | Chyron**.
3. Double-click **SetupCGPlugin.exe**.
4. Enter **vibrint** when asked for a password.

The files extract and the CG Plugin Setup screen appears.

5. Follow these instructions to install the plug-in:

On this screen...	Do this...
Welcome	Click <b>Next</b> .
License Agreement	Read and accept by clicking <b>Yes</b> .
Choose Destination Location	Leave set at the default location and click <b>Next</b> .
Select Program Folder	Leave set at <b>CG Plugin</b> and click <b>Next</b> .
Installation Complete	Click <b>Finish</b> to close the installation program.



## External Controllers

With NewsEdit LT, you can use two external controllers:

- **Motorized Fader Controller**—Lets you control the audio features of NewsEdit LT, making refining and perfecting the audio mix of your sequences easier.
- **Effects Controller**—Lets you control the creation of effects in NewsEdit LT externally.

To install an external controller:

1. Connect the controller to NewsEdit LT:
  - a. Plug the controller's USB connector into one of the available USB ports on the back of your NewsEdit LT computer.
  - b. If you are connecting the Motorized Fader Controller, plug the controller's power connector into a DC power adapter connection; the Effects Controller is powered off of the USB cable.
  - c. When the New Hardware Wizard appears, follow the directions on the screen.
  - d. When asked for the controller's driver, navigate to: **C: | Program Files | Vibrant 3.0 | Drivers | JLC USB Drivers**.
  - e. Finish the new hardware installation.
2. Assign a COM port for the controller in NewsEdit LT:
  - a. In NewsEdit LT, choose **Tools | Options | Controller**.
  - b. Select the COM port from the **USB Controller Comm Port** drop-down list.
  - c. Click **OK**.

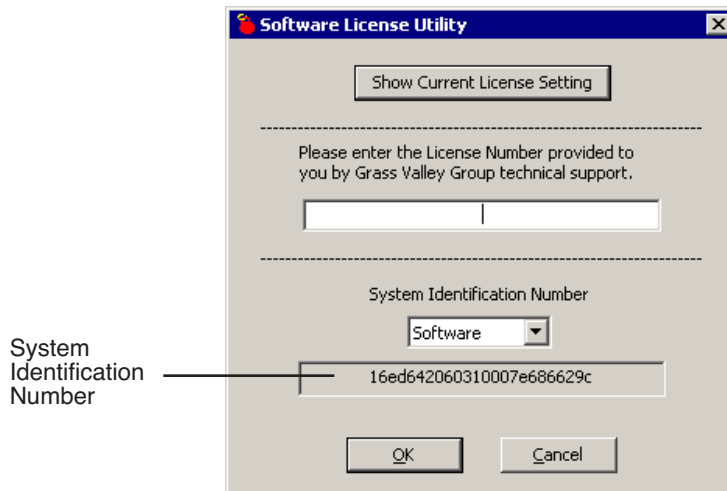
## Step 7: Obtain a Software License Number

Once you've installed the Profile and NewsEdit LT software, you need to get a License Number from Grass Valley.

To obtain a License Number:

1. Open Windows Explorer and browse to **C: | Program Files | Vibrint 3.0 | Utilities**.
2. Double-click the file **License.exe** to open it.

The Software License Utility opens:



Your System Identification Number appears in the bottom field of the window.

3. Call Grass Valley Product Support at 1-800-547-8949 and provide the customer service representative with your System Identification Number, as well as the software version and the original order number for the system.
4. Enter the License Number provided to you by Grass Valley Product Support and click **OK**.

Your NewsEdit LT software is ready to use. To learn how to use NewsEdit LT, view the NewsEdit LT User Guide at **C: | Program Files | Vibrint 3.0 | Docs**.



---

*Installing NewsEdit LTS*