

NewsEdit SCE

DIGITAL NEWS EDITOR

Install Guide



SOFTWARE VERSION 5.0

071831300
MAY 2004

the most watched worldwide

Copyright

Copyright © 2004 Thomson Broadcast and Media Solutions, Inc. All rights reserved. Printed in the United States of America.

This document may not be copied in whole or in part, or otherwise reproduced except as specifically permitted under U.S. copyright law, without the prior written consent of Thomson Broadcast and Media Solutions, Inc., P.O. Box 59900, Nevada City, California 95959-7900

Trademarks

ContentShare, Grass Valley, NewsEdit XT, NewsQ, NewsQ Pro, NewsShare, Media Manager, and Profile are either registered trademarks or trademarks of Thomson Broadcast and Media Solutions in the United States and/or other countries. Other trademarks used in this document are either registered trademarks or trademarks of the manufacturers or vendors of the associated products. Thomson Broadcast and Media Solutions products are covered by U.S. and foreign patents, issued and pending. Additional information regarding Thomson Broadcast and Media Solutions' trademarks and other proprietary rights may be found at www.thomsongrassvalleygroup.com.

Disclaimer

Product options and specifications subject to change without notice. The information in this manual is furnished for informational use only, is subject to change without notice, and should not be construed as a commitment by Thomson Broadcast and Media Solutions. Thomson Broadcast and Media Solutions assumes no responsibility or liability for any errors or inaccuracies that may appear in this publication.

U.S. Government Restricted Rights Legend

Use, duplication, or disclosure by the United States Government is subject to restrictions as set forth in subparagraph (c)(1)(ii) of the Rights in Technical Data and Computer Software clause at DFARS 252.277-7013 or in subparagraph c(1) and (2) of the Commercial Computer Software Restricted Rights clause at FAR 52.227-19, as applicable. Manufacturer is Thomson Broadcast and Media Solutions, Inc., P.O. Box 59900, Nevada City, California 95959-7900 U.S.A.

Revision Status

Rev Date	Description
May 25, 2004	Release for Software Version 5.0

Installing NewsEdit SCE

Use these instructions to install the NewsEdit SCE software on the Dell PC.

To install NewsEdit SCE, follow these steps:

1. Set up Windows for optimal performance with NewsEdit SCE.
2. Uninstall any previous versions of NewsEdit or Profile software from the PC.
3. Install the Profile software from the NewsEdit SCE CD-ROM.
4. Install the NewsEdit SCE software from the NewsEdit SCE CD-ROM.
5. Install any options for NewsEdit SCE—titling or external controllers.
6. Obtain a License Number from Thomson Grass Valley.



Step 1: Set Up Windows to Use NewsEdit SCE

You need to configure several Windows settings in order to use NewsEdit SCE.

Updating the Display Adapter Driver

1. Insert the NewsEdit SCE CD-ROM into the computer's CD-ROM drive.
2. Browse to **D: | Drivers | NVidia for DELL D800**.
3. Double-click **R65893.exe**.
4. Follow the prompts to load the driver.
5. Reboot your computer when prompted.

Setting Display Properties

1. Right-click on the Desktop and select **Properties**.
The Display Properties window appears.
2. Click the Desktop tab:
 - a. Click **Customize Desktop**.
 - b. In the Desktop icons section, check **My Computer**, **My Network Places**, and **Internet Explorer**.
 - c. Click **Apply**.
3. Click the Appearance tab:
 - a. Under Windows and buttons:, select **Windows Classic Style**.
 - b. Click the **Effects** button, check **Use the following method to smooth edges of screen fonts**, and select **Standard** from the drop-down list.
 - c. Deselect **Use large icons**.
 - d. Click **OK**.
 - e. Click **Apply**.
4. Click the Settings tab:
 - a. The Monitor 1 icon should be selected.

- b. Set the screen resolution to **1024 x 768**.
- c. Select **Highest (32 bit)** for the Color Quality.
- d. Click **Apply**.

Adjusting System Performance Settings

1. Right-click on My Computer and select **Properties**.
2. Click the Advanced tab.
3. Under Performance, click the **Settings** button.
4. In the Visual Effects tab, select **Adjust for best performance** and click **Apply**.
5. Click the Advanced tab.
6. Under Virtual Memory, click the **Change** button.
7. Select Custom Size and set both the Initial Size and the Maximum Size to **1024**.
8. Click **Set**.
9. Click **OK** three times to close the windows.

Setting the Network Access Security Mode

1. From the Start menu, select **Settings | Control Panel**.
2. Double-click **Administrative Tools**.
3. Select **Local Security Policy | Local Policies**.
4. Under Security Options, double-click **Network access: Sharing and security model for local accounts**.
5. Select **Classic-local users authenticate as themselves** from the drop-down menu.
6. Click **OK**.
7. Close all windows.



Setting User Account Options

1. From the Start menu, select **Settings | Control Panel**.
2. Double-click **User Accounts**.
3. Click **Change the way users log on or off**.
4. Uncheck both options: **Use the Welcome Screen** and **Use Fast User Switching**.
5. Click **Apply Options**.
6. Close the window.

Installing Critical Windows Updates

It is highly recommended that you install any critical Windows updates. Open Internet Explorer, select **Tools | Windows Update** and follow the instructions.

Step 2: Uninstall Previous Versions of Software

If your NewsEdit SCE is a new system, you can skip these instructions.

If you are upgrading your NewsEdit SCE software, you need to remove any previous versions of Profile and NewsEdit software before installing the new software.

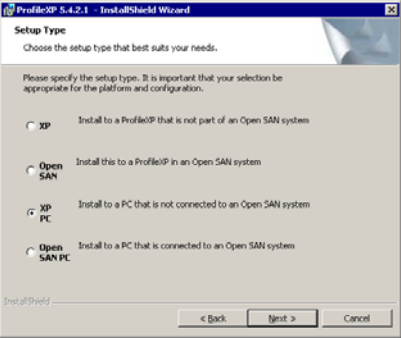
To uninstall Profile and NewsEdit software:

1. From the Windows desktop, choose **Start | Settings | Control Panel | Add/Remove Programs**.
2. Find the ProfileXP item, click it to expand, and click **Remove**.
3. Find the NewsEdit item, click it to expand, and click **Remove**.

Step 3: Install the Profile Software

NewsEdit SCE requires Profile software drivers to be installed prior to installing the NewsEdit SCE software. To install the Profile software:

1. Insert the NewsEdit SCE CD-ROM into the machine's CD-ROM drive.
2. Click the **Install** button next to Profile Software Installer.
3. Install the software following these instructions:

On this screen...	Do this...
Welcome	Click Next .
License Agreement	Read and accept, then click Next .
Setup Type	 <p>Select your type of setup and click Next:</p> <ul style="list-style-type: none"> • XP PC—Select this type if your system is part of a local network and using local storage, or is part of a Network Attached Storage (NAS) system and using shared storage. • Open SAN PC—Select this type if your system is part of an Open SAN system using shared storage. <p>>>> WARNING: The other setup types are for installing Profile software on a Profile Video Server and should never be used on a NewsEdit SCE computer.</p>
Ready to Install	Click Install .
Installation Complete	Click Finish . The computer prompts you to reboot so the new settings take effect.



Step 4: Install the NewsEdit SCE Software

To install the NewsEdit SCE software on your computer:

1. Insert the NewsEdit SCE CD-ROM into the machine's CD-ROM drive.
2. Click the **Install** button next to the NewsEdit SCE Installer.

***NOTE:** If you have a previous version of NewsEdit software on your computer that you haven't removed, the system detects the software and displays a message. Click **OK** to close the message and click **Yes** to uninstall the previous version of software.*

3. Follow the directions below for using Local or Shared Storage. If your system is part of an Open SAN system or connected to Network Attached Storage (NAS), use the instructions for Shared Storage; otherwise, use the instructions for Local Storage.

Local Storage System

Follow these instructions if you are installing NewsEdit SCE on a system using local storage:

On this screen...	Do this...
Welcome	Click Next .
Select Destination Directory	Leave set at the default location and click Next .
Select Shared or Local Installation	Select Local and click Next .
Specify Directory for Video and Audio Files	Leave set at the default location and click Next .
Ready to Install	Click Next to begin the installation.
Installation Complete	Click OK to close the installation program. The computer prompts you to reboot so the new settings take effect.

Once the computer reboots, a System Self Test runs, testing your software configuration and software versions.

Shared Storage System

Follow these instructions if you are installing NewsEdit SCE on a system using shared storage.

NOTE: Before you install the NewsEdit SCE software on a shared storage system, you need to connect the computer to the shared storage and be able to see the Database System Manager (DSM) on the network. See the documentation that came with your Network Attached Storage (NAS) system for more information.

On this screen...	Do this...
Welcome	Click Next .
Select Destination Directory	Leave set at the default location and click Next .
Select Shared or Local Installation	Select Open SAN or NAS depending on your storage configuration, and click Next .
Specify the Servers for the Shared Database	Enter the names of the primary and secondary (if applicable) File System Managers (or Database System Managers for the NAS system) and click Next .
Specify Directory for Shared Video and Audio Files	Leave set at the default location and click Next .
Specify Directory for AV Cache Files	Leave set at the default location and click Next .
Specify Location for Shared Thumbnails	Leave set at the default location and click Next .
Specify Directory for Local Video and Audio Files	Leave set at the default location and click Next .
Ready to Install	Click Next to begin the installation.
Installation Complete	Click OK to close the installation program. The computer prompts you to reboot so the new settings take effect.

Once the computer reboots, a System Self Test runs, testing your software configuration and software versions.



Step 5: Install NewsEdit SCE Options

If you have purchased any of the NewsEdit SCE options, Titling or External Controllers, use the instructions below to install the component.

NewsEdit Titling

To install the Titling plug-in:

1. Insert the NewsEdit SCE CD-ROM into the machine's CD-ROM drive.
2. Navigate to **D: | Chyron**.
3. Double-click **SetupCGPlugin.exe**.
4. Enter **vibrint** when asked for a password.

The files extract and the CG Plugin Setup screen appears.

5. Follow these instructions to install the plug-in:

On this screen...	Do this...
Welcome	Click Next .
License Agreement	Read and accept by clicking Yes .
Choose Destination Location	Leave set at the default location and click Next .
Select Program Folder	Leave set at CG Plugin and click Next .
Installation Complete	Click Finish to close the installation program.

External Controllers

With NewsEdit SCE, you can use three external controllers:

- Jog/Shuttle Controller—Lets you control NewsEdit SCE externally, making editing faster.
- Motorized Fader Controller—Lets you control the audio features of NewsEdit SCE, making refining and perfecting the audio mix of your sequences easier.
- Effects Controller—Lets you control the creation of effects in NewsEdit SCE externally.

Connecting the Jog/Shuttle Controller

1. Plug the controller's 9-pin connector into the bottom RS-422 port on the back of the NewsEdit SCE computer (COM4).
2. Plug the controller's power connector into a DC power adapter connection.
3. Verify that the following information appears on the controller's display when it powers up:

**Grass Valley
NewsEdit
Rev 1.04**

Connecting the Motorized Fader or the Effects Controller

1. Connect the controller to NewsEdit SCE:
 - a. Plug the controller's USB connector into one of the available USB ports on the back of your NewsEdit SCE computer (usually COM5 for the Motorized Fader Controller and COM6 for the Effects Controller).
 - b. If you are connecting the Motorized Fader Controller, plug the controller's power connector into a DC power adapter connection; the Effects Controller is powered off of the USB cable.
 - c. When the New Hardware Wizard appears, follow the directions on the screen.
 - d. When asked for the controller's driver, navigate to: **C: | Program Files | Vibrint 3.0 | Drivers | JLC USB Drivers**.
 - e. Finish the new hardware installation.

Assigning a COM port for the controller in NewsEdit SCE

To use any of the controllers, you need to assign a specific COM port in NewsEdit SCE for the controllers. To assign a COM port:

1. In NewsEdit SCE, choose **Tools | Options | Controller**.
2. For the Jog/Shuttle Controller, select the correct COM port from the **422 Controller Comm Port** drop-down list; for the other controllers, select the COM port from the **USB Controller Comm Port** drop-down list.

The COM port needs to match the number of the port where you connected the controller.

3. Click **OK**.



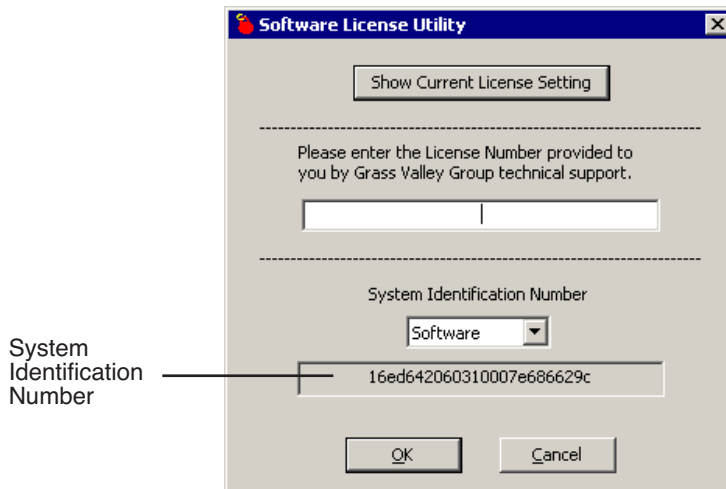
Step 6: Obtain a Software License Number

Once you've installed the Profile and NewsEdit SCE software, you need to get a License Number from Grass Valley.

To obtain a License Number:

1. Open Windows Explorer and browse to **C: | Program Files | Vibrint 3.0 | Utilities**.
2. Double-click the file **License.exe** to open it.

The Software License Utility opens:



Your System Identification Number appears in the bottom field of the window.

3. Call Grass Valley Product Support at 1-800-547-8949 and provide the customer service representative with your System Identification Number, as well as the software version and the original order number for the system.
4. Enter the License Number provided to you by Grass Valley Product Support and click **OK**.

Your NewsEdit SCE software is ready to use. To learn how to use NewsEdit SCE, view the NewsEdit SCE User Guide at **C: | Program Files | Vibrint 3.0 | Docs**.