



EDIUS®

EDIT ANYTHING. FAST

Floating License Server

Users Guide

May, 2021

www.grassvalley.com

Notice to Reader

- It is prohibited to copy a part or all of this product without prior permission.
- The contents or specifications of this product may be changed without prior notice.
- We have prepared the contents of this product to the best of our ability; however if you have any questions about the contents, or if there are any errors or missing items, please contact Grass Valley.
- However we do not take any responsibility for malfunctions arising from use, irrespective of the points outlined in the preceding paragraph.
- Irrespective of whether it was due to a usage error, Grass Valley takes no responsibility for extraordinary, incidental or derivative claims, including those for lost earnings generated by the application of this product.
- It is prohibited to analyze, reverse engineer, decompile, or disassemble any of the items included with this product, including the software, hardware, and manuals.
- Grass Valley, GV STRATUS, K2, Aurora, Summit, Infinity, and EDIUS are either registered trademarks or trademarks of Grass Valley USA, LLC in the United States and/or other countries.
- MYNC and EDIUS MYNC are trademarks of Belden Inc.
- Microsoft, Windows, and Internet Explorer are trademarks or registered trademarks of Microsoft Corporation in the United States and other countries.
- Intel, Xeon, and Core Duo are trademarks or registered trademarks of Intel Corporation or its subsidiaries in the United States and other countries.
- QuickTime and QuickTime logo are trademarks used under licenses. QuickTime is a trademark registered in the United States and other countries.
- Final Cut Pro, Macintosh, and Apple ProRes are trademarks of Apple Inc., registered in the U.S. and other countries.
- Adobe, Adobe logo, Adobe Reader, Photoshop, Adobe PDF and Adobe PDF logo, After Effects, Flash and Flash logo, and Adobe Flash Player are trademarks of Adobe Systems Incorporated.
- Manufactured under license from Dolby Laboratories. Dolby and the double-D symbol are trademarks or Dolby Laboratories. Unpublished work. Copyright 2003-2012 Dolby Laboratories, Inc. and Dolby Laboratories Licensing Corporation. All right reserved.
- HDV is a trademark of Sony Corporation and JVC KENWOOD Corporation.
- XDCAM, XDCAM EX, XAVC, XAVC S, and SxS are trademarks of Sony Corporation.
- GF is a trademark of Toshiba Corporation.
- The terms HDMI and HDMI High-Definition Multimedia Interface, and the HDMI Logo are trademarks or registered trademarks of HDMI Licensing Administrator, Inc. in the United States and other countries.
- P2, AVCCAM, AVC-Intra, and AVC-Ultra are trademarks of Panasonic Corporation.
- AVCHD is a trademark of Panasonic Corporation and Sony Corporation.
- EOS is a trademark of Canon Inc.
- Blu-ray is a trademark of Blu-ray Disc Association.
- SD card is a trademark of SD Association.
- Google Chrome, YouTube, and YouTube logo are trademarks or registered trademarks of Google Inc.
- Vimeo is a trademark or registered trademark of Vimeo, LLC.
- The trademark, service mark, product name logo, and product name of RED are trademarks or registered trademarks of Red.com, Inc. in the United States and other countries.
- Avid, Pro Tools, Media Composer, Avid DNxHD, and Avid DNxHR are trademarks or registered trademarks of Avid Technology, Inc. or its subsidiaries in the United States.
- AMD is a trademark of Advanced Micro Devices, Inc.

-
- Firefox is a trademark or registered trademark of Mozilla Foundation in the U.S. and other countries.
 - GoPro is a trademark or registered trademark of GoPro, Inc. in the U.S. and other countries.
 - Facebook is a trademark or registered trademark of Facebook, Inc.
 - Other product names or related brand names are trademarks or registered trademarks of their respective companies.

Manual Explanation

- It is prohibited to copy a part or all of this product without prior permission.
- The contents or specifications of this product may be changed without prior notice.
- If there are any variations between the explanation in this manual and the actual application method, priority is given to the actual application method.
- The images and illustrations used in this manual are prototypes and they may be different from the screens of the actual product.
- This manual is written for people who have a basic knowledge of how to use a computer. If there are no special instructions, perform the same operation as a normal computer operation.
- The procedures in this manual are described based on an assumption that the OS of the computer in use is Windows 10.
- In this manual, EDIUS Workgroup, EDIUS Pro, and EDIUS series are called “EDIUS”.
- In this manual, Microsoft® Windows® operating system products are called as follows.
 - Microsoft® Windows® 10 operating system: Windows 10 (collective term for Enterprise, Education, Pro, Home)
 - Microsoft® Windows® Server 2019 operating system: Windows Server 2019 (collective term for Datacenter, Standard, and Essentials)
 - Microsoft® Windows® Server 2016 operating system: Windows Server 2016 (collective term for Datacenter, Standard, and Foundation)
- The signs and definitions in this manual are as follows.

! DANGER

Health Precautions

In rare cases, flashing lights or stimulation from the bright light of a computer display or TV monitor may trigger temporary epileptic seizures or loss of consciousness. It is believed that even individuals whom have never experienced such symptoms may be susceptible. If you or close relatives have experienced any of these symptoms, consult a doctor before using this product.

If you edit 3D video more than an hour continuously, take a rest of 10 to 15 minutes per hour. If you feel tired or uncomfortable, stop using the product.

Copyright

Do not use captured image/sound data created by other ones without authorization of the right holder regardless of whether it is moving or still image, except for personal fun. Also, duplication of such data is sometimes limited even for personal hobby. Please notice that we are exempted from responsibility for the use of captured data.

Copyright

Copyright 2013-2020 Grass Valley. All rights reserved. Portions of software © 2000 – 2020, Microsoft Corporation. All rights reserved. This document may not be copied in whole or in part, or otherwise reproduced except as specifically permitted under U.S. copyright law, without the prior written consent of Grass Valley, Inc., P.O. Box 59900, Nevada City, California 95959-7900. This product may be covered by one or more U.S. and foreign patents.

Disclaimer

Product options and specifications subject to change without notice. The information in this manual is furnished for informational use only, is subject to change without notice, and should not be construed as a commitment by Grass Valley, Inc. Grass Valley, Inc. assumes no responsibility or liability for any errors or inaccuracies that

**U.S.
Government
Restricted
Rights
Legend**

may appear in this publication.

Use, duplication, or disclosure by the United States Government is subject to restrictions as set forth in subparagraph (c)(1)(ii) of the Rights in Technical Data and Computer Software clause at DFARS 252.277-7013 or in subparagraph c(1) and (2) of the Commercial Computer Software Restricted Rights clause at FAR 52.227-19, as applicable. Manufacturer is Grass Valley, Inc., P.O. Box 59900, Nevada City, California 95959-7900 U.S.A.

**Trademarks
and Logos**

Grass Valley is a trademark of GVBB Holdings S.a.r.l. Grass Valley USA, LLC products are covered by U.S. and foreign patents, issued and pending. Additional information regarding Grass Valley USA, LLC trademarks and other proprietary rights may be found at the following URL.

<http://www.grassvalley.com/>

**Grass Valley
Web Site**

This public Web site contains all the latest manuals and documentation, and additional support information. Use the following URL.

<http://www.grassvalley.com/>

Contents

Notice to Reader.....	1
Manual Explanation	3
! DANGER.....	3
Health Precautions.....	3
Copyright	3
Chapter 1 EDIUS Floating License System	6
Overview	6
Server Operating Environment.....	6
Chapter 2 Setup.....	7
Installing the server	7
License activation (On-line)	7
License activation (Off-line)	8
Chapter 3 Use floating license	9
EDIUS client configuration.....	9
Use floating license	9
Chapter 4 License deactivation.....	10
Exit EDIUS.....	10
License deactivation (Off-line).....	10
Chapter 5 Troubleshooting	11
An error occurs while starting EDIUS.....	11
Several functions disabled in EDIUS	11
Chapter 6 Server administration	13
Change password.....	13
Verify “Running” status of the services	13
Restart license server modules.....	13
Chapter 7 Replace server computer.....	15
Chapter 8 Upgrade the floating license server.....	15

Chapter 1 EDIUS Floating License System

Overview

EDIUS requires license activation on each editing PC. EDIUS Pro edition also requires log onto eID (EDIUS ID). EDIUS X supports to run by seeing a license activated on floating license server. In this system, you do not need to create and log into eID. Target product is EDIUS X Pro and Workgroup.

Server Operating Environment

OS

- Windows Server 2019
- Windows Server 2016

NOTE Obtain the latest update from Windows Update

Supported Virtual Environment

- VMware ESXi 5.1 or later, Workstation 9 or later
- Citrix XenServer 6.2 or later

CPU

Use processor that the operating system requires.

Memory

EDIUS floating license server requires minimum memory size that the operating system requires plus 1GB memory.

Hard Disk

To run EDIUS floating license server, 40GB or more hard disk space is required.

Web browser

Set Internet Explorer as default web browser

IMPORTANT NOTE

You cannot build the floating license server in EDIUS editing client machine.

Chapter 2 Setup

Installing the server

Install EDIUS Floating License server on a computer you want to use as floating license server.

- 1 Run "GV_FloatingLicense_Setup-xx.xx.xxxx.exe".

NOTE Use same build number of floating license server installer as EDIUS installer.

- 2 Follow up the setup wizard.
- 3 Check "I agree to the license terms and conditions" then click [Install] button.

NOTE

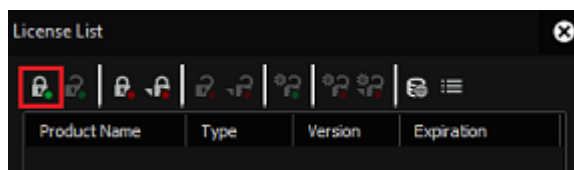
- Be sure to read through all of the terms and conditions by scrolling the window.
- Click [Close] to cancel the installation. If you do not agree to the license agreement, stop the installation and contact our customer support in writing.

- 4 Floating server installation begins.
- 5 Click [Restart] button to restart the computer.

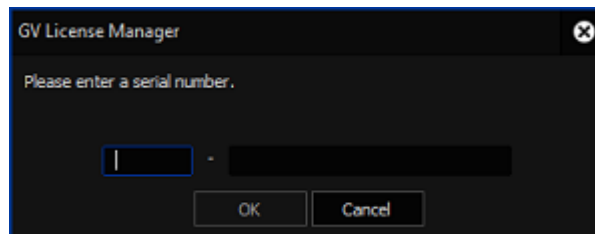
License activation (On-line)

Activate floating license after the server installation completed. The activation requires internet connectivity.

- 1 Select Start > All Programs > Grass Valley > GV LicenseManager.
- 2 Click Online Activation button.



- 3 Enter a serial number then click [OK] button.

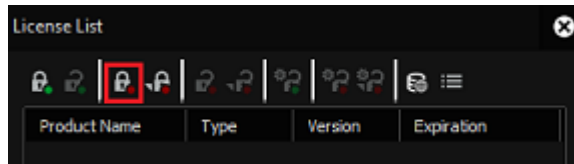


- 4 Once activation succeeded, the license will appear in the list. Close license list.
- 5 Restart the server computer to active the license.

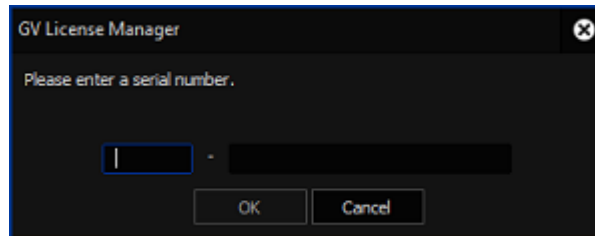
License activation (Off-line)

If server computer does not have internet connectivity, activate the license in offline mode.

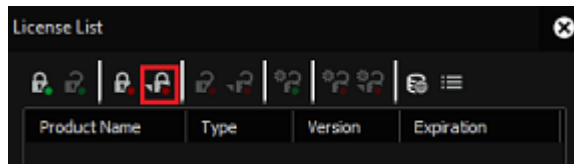
- 1 Insert an USB stick memory into free USB port on the server computer.
- 2 Select Start > All Programs > Grass Valley > GV LicenseManager (Server Mode).
- 3 Click [Offline Activation Create ID File] button.



- 4 Enter a serial number then click [OK] button.



- 5 Select the USB stick as destination then click [OK] button.
- 6 Click [OK] button.
- 7 Remove the USB stick from the computer then insert into a Windows PC connected to an internet.
- 8 Open the USB stick then double-click GVAActivation.
- 9 Click [Yes] button.
- 10 Click [OK] button.
- 11 Remove the USB stick from the Windows PC then insert to the server computer.
- 12 Click [Offline Activation Register Activation File] button in GV License manager.



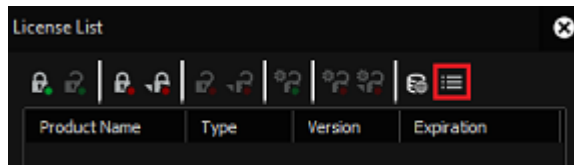
- 13 Choose responseXML.xml in the USB stick and then click [Open] button.
- 14 Activated license will appear in the list. Close license list.
- 15 Restart the server computer to activate the license.

Chapter 3 Use floating license

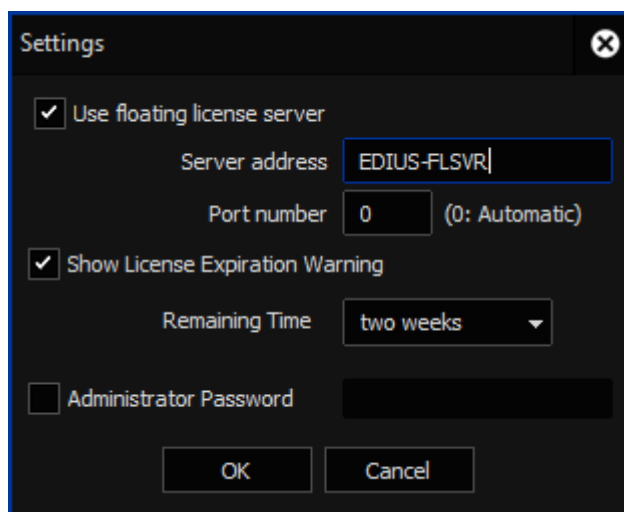
EDIUS client configuration

Enable to use floating license on EDIUS editing workstation.

- 1 Right-click on GV License Manager icon in Windows Task Tray then choose [License List] context menu.
- 2 Click [Settings] button.



- 3 Configure following settings:
 - Check "Use floating license server" option
 - Enter the floating license server computer name
 - Enter port number (selecting 0 is recommended)



- 4 Click [OK] button.

Use floating license

Double-click EDIUS icon on the desktop. EDIUS validates the floating license by connecting to the server. Once validated, EDIUS will start.

NOTE

If "Check the status of the network and remaining number of licenses on the server" appears, confirm left of copies using license server web console.

► [An error occurs while starting EDIUS page.12](#)

Chapter 4 License deactivation

Exit EDIUS

- 1 Exit EDIUS on each client machines.
- 2 On the floating license server, open GV License Manager license list then click [Open license server in browser] button.
- 3 Server console will open in web browser. Confirm number of In Use is zero.



Feature	Version	In Use (Available)	Expiration
EDIUS X Workgroup WW	10.00	0 (5)	PERMANENT Hosts

- 4 Close the console by closing web browser.

License deactivation (Off-line)

NOTE

- Before deactivating the license, EDIUS must be exit on all clients
- On-line deactivation does not work

- 1 Insert an USB stick memory into free USB port on the server computer.
- 2 Select Start > All Programs > Grass Valley > GV LicenseManager (Server Mode).
- 3 Select target license then click [Offline Deactivation Create ID File] button.
- 4 Select the USB stick as destination then click [OK] button.
- 5 Click [OK] button.
- 6 Pack all files in the destination then send it to Grass Valley technical support.
- 7 Right-click on GV License Manager icon in Windows Task Tray then select [Exit] context menu.
- 8 Start GV License Manager with pressing [Ctrl] + [Shift] key from Start > All Programs > Grass Valley > GV License Manager. Once GV License Manager appeared, release pressed keys.
- 9 Open license list.
- 10 Right-click on the license in yellow letters then select [Delete] context menu.
- 11 Close license list.
- 12 Right-click on GV License Manager icon in Windows Task Tray then select [Exit] context menu.

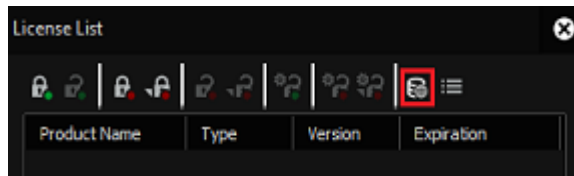
Chapter 5 Troubleshooting

An error occurs while starting EDIUS

If “Check the status of the network and remaining number of licenses on the server” appears while starting EDIUS, confirm the left of copies.

Check left of floating license copy

- 1 Open GV License Manager then click [Open license server in browser] button.



- 2 Server console will open in web browser and you can see 'In use' and 'Available' number of license copy. If both are same, you cannot start EDIUS by no left of copy.

Feature	Version	In Use (Available)	Expiration
EDIUS X Workgroup WW	10.00	5 (5)	PERMANENT Hosts

- 3 Click Hosts link. EDIUS client name that is using the floating license will be listed. Exit EDIUS on any client to return the license copy to the server. Once returned, you will be able to start EDIUS.

Confirm running of required services

- 1 Start Windows Task Manager then go to [Services].
- 2 Confirm if both FlexNet Licensing Service 64 and GVLICENSESERVER have 'Running' status. If not, right-click on each of them and choose Start. If they have 'Running', choose 'Restart' context menu.
- 3 Confirm if GV License Manager is running in the server then start EDIUS client application.

Several functions disabled in EDIUS

Connection to floating license server must be kept while using EDIUS. If disconnected more than 15 minutes, following functions will disable in EDIUS.

- Print to file
- Print to tape
- Batch export
- Burn to Disc
- Launch Quick Titler

If the functions disabled, try following troubleshooting.

Restart GV License Manager on EDIUS client

- 1 Save project then exit EDIUS.
- 2 Right-click on GV License Manager icon in Windows Task Tray then select [Exit] context menu.
- 3 Start GV License Manager from Start > All Programs > Grass Valley > GV License Manager.
- 4 Start EDIUS.

Restart floating license server

Try to restart the floating license server computer.

If both troubleshooting not helpful, try following narrow down then contact to Grass Valley technical support along with your troubleshooting and narrow down result.

- 1 Confirm if you can open the server console in web browser. To do it, click [Open license server in browser] button in GV License Manager license list.
- 2 Open license server in web browser then confirm if your EDIUS client name is listed in 'Hosts' list.

Once EDIUS client reconnected to floating license server, disabled functions will be enabled.

Chapter 6 Server administration

Change password

Change administrator password for license server administration console by following steps.

- 1 Open GV License Manager then click [Open license server in browser] button.
- 2 The administration console will open in web browser. Click Administration tab.
- 3 Sign In dialog will appear. Enter following user name and password then click [Submit] button.
User Name: admin
Password: admin
- 4 Once signed in, you will be required to change the password, enter new password including confirmation then click [OK] button.

Verify “Running” status of the services

Confirm that the required services are running in the Services list.

- FlexNet Licensing Service 64
- GVLICENSESERVER

If these do not have “Running” status, right-click on the service then select [Restart] context menu. If the service does not appear in the list, try to restart the server computer.

Restart license server modules

You can restart server related modules by following procedure.

- 1 Open GV License Manager then click [Open license server in browser] button.
- 2 Sign into the administration console.
- 3 Select [Vendor Daemon Configuration] tab.
- 4 Click Administer.

Name ▲	Status	FlexNet Publisher Version	Port		
GVKK	Up	11.15	55187	Administer	Delete

- 5 Click [Stop] button.



6 Status will change to Shutting Down.

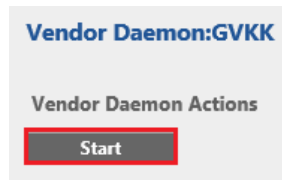
Name ▲	Status
GVKK	Shutting Down

7 After several seconds, refresh the web browser screen manually, and then confirm that the status changed to Down.

Name ▲	Status
GVKK	Down

8 Click Administer.

9 Click [Start] button.



10 Status will change to Starting up.

Name ▲	Status
GVKK	Starting Up

11 Go to another tab then back to [Vendor Daemon Configuration] to refresh the screen.

12 Confirm that the status changed to Up.

Name ▲	Status
GVKK	Up

13 Sign out from the console.

14 Open Windows Task Manager.

15 Right-click on GVLICENSESERVER then select [Restart] context menu.

16 Once the service started, restarting server module succeeded.

If restarting the module is not helpful for your trouble, restart the server computer to resolve problem.

Chapter 7 Replace server computer

- 1 Exit EDIUS client application on all computer.
- 2 Open GV License Manager then click [Open license server in browser] button.

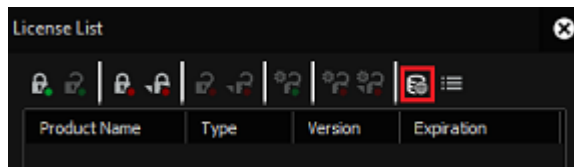


- 3 Server console will open in web browser. Confirm if number of In Use is zero.
- 4 Exit server console.
- 5 Deactivate floating license in the server computer then close the license list.
- 6 From Program and Features, uninstall GV Floating License Server program.
- 7 After replacing computer hardware, build EDIUS floating license server.

Chapter 8 Upgrade the floating license server

Grass Valley recommend to upgrade the floating license server build when upgrading EDIUS client software

- 1 Exit EDIUS client application on all computer.
- 2 Open GV License Manager then click [Open license server in browser] button.



- 3 Server console will open in web browser. Confirm if number of In Use is zero.
- 4 Exit server console.
- 5 From Program and Features, uninstall GV Floating License Server program.
- 6 Restart Windows
- 7 Run same build number of EDIUS floating license server installer as EDIUS client software