



Supplementary Notes for RCP-BR

885-99M06-104

Jan 2013

For RCP-BR software version 4.8 (SP4)

Note : Contact info for your local Miranda support office is located here: <http://www.miranda.com/support/>

BR-RCP units

RCP-BR units may be upgraded to RCP-BR software version 4.8.

Upgrade procedure

To upgrade an existing RCP-BR to s/w version 4.8, carry out the upgrade procedure described below.

(Existing RCP-BR software versions are:- 4.3, 4.4, 4.5 & 4.7. Note: There is no RCP-BR 4.6 s/w version)

Upgrading a RCP-BR unit to software version 4.8 :-

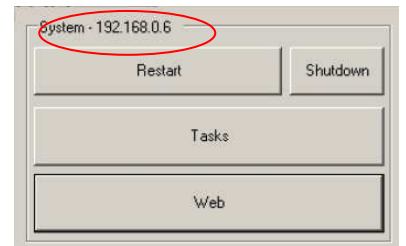
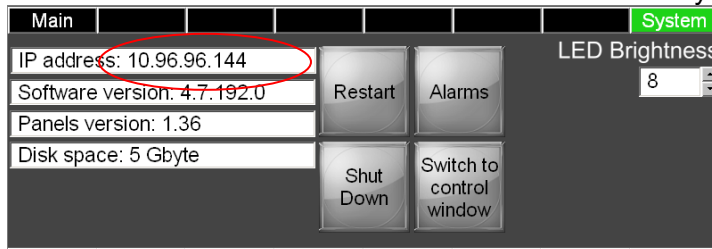
Upgrading from RCP-BR 4.3 and earlier:-

When upgrading from earlier RCP-BR versions, please first upgrade the unit to RCP-BR 4.4. Please contact Miranda technical support.

Upgrading from BR-RCP 4.4 or 4.5 or 4.7 :-

1. **Download two update files** from Miranda from <http://www.miranda.com/support/Oxtel%20Series> :-
 Filename : RCPBRPreUpdate4.8.zip this is the pre-update .zip file
 Filename : RCPBRUpdate4.8.246.0.zip this is the main update .zip file

2. **Establish your RCP-BR unit's IP address** – this is shown on the “System” screen:



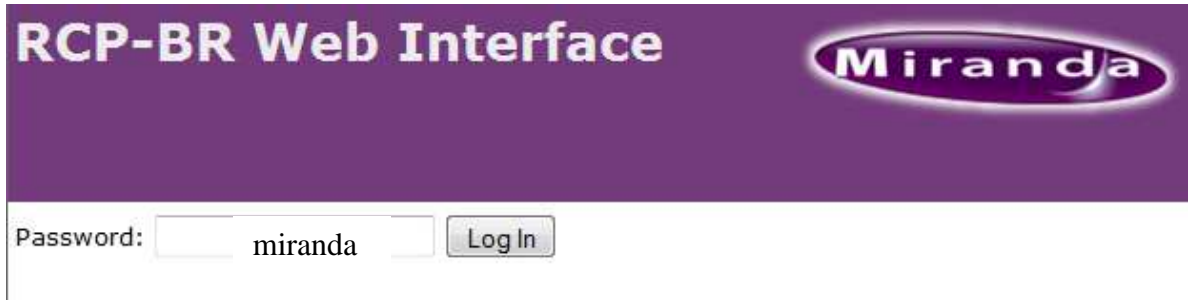
3. **Access your RCP-BR unit's web-page** from your web browser.

Note : Miranda recommend browsers Chrome or Mozilla Firefox

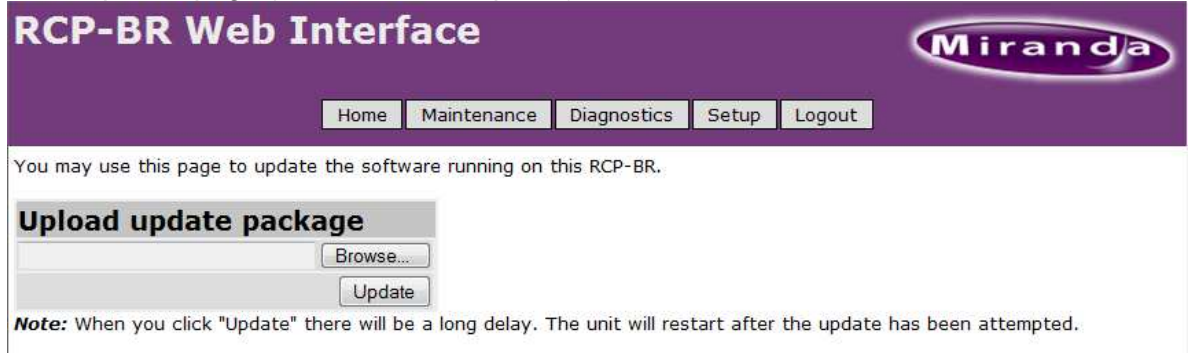
(<http://www.mozilla.org/en-US/firefox/new/> , <http://www.google.com/chrome/>).

Internet Explorer can work, but may sometimes disconnect from the RCP-BR unit during file uploading: If this is found, then re-upload the corresponding file from the RCP-BR web-page.

- Type the RCP-BR unit's IP address into your browser to access the RCP-BR unit's web-page.
- RCP-BR web page login password is “miranda”.



- Go to the “Update” page (Maintenance->Update).



4. **Now upload the pre-update .zip file :**

Browse to the file, then click the “Update” button.
 The file is then up-loaded. The unit re-starts quickly.
 Close down your web-browser and wait for the RCP-BR unit to re-start.
 Go to the unit’s web-page again, when the unit has re-started, log in again.
 The RCP-BR unit will then be prepared for the main update.

5. **Now upload the main update .zip file :**

Browse to the file, then click the “Update” button. File upload begins.
 The unit restarts after 5-10 minutes, once the .zip file has been uploaded.
 During re-start, the .zip file carries out the remainder of the update install: New software is installed and database migration may take place.

Note : This can take 20-50 minutes to complete installation and upgrade.
 Important, do not remove power while this step is happening.

6. **After the installation is complete:**

A License Error message box is displayed; this is correct.
 The RCP-BR unit now needs re-licensing.

- Go to the RCP-BR web-page’s “Licenses” page (Maintenance->Licenses).
 Take note of your Customer Id.
 (Customer Id is a 13-character code, eg 0dnrs-rwobe-6im)
 Contact Miranda technical support to get your new Licence Key to add onto your RCP-BR.

RCP-BR Shutdown

To turn off and shutdown a RCP-BR properly:-

From the System Menu screen



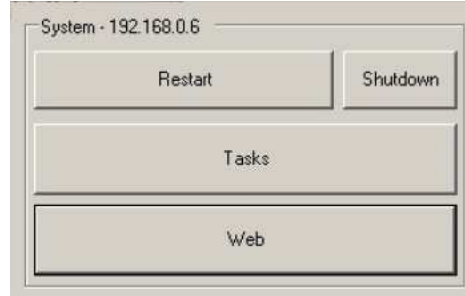
Accessed by pressing the “System” pushbutton on the left of “CH SEL” button.

To shutdown:

- Press “Shutdown”,
- Then press “Confirm Shutdown”.

Shutdown sequence begins

OR from the Control Window dialog



May be visible during start-up, dialog also accessible from System Menu screen, press “Switch to Control Window”.

To shutdown:

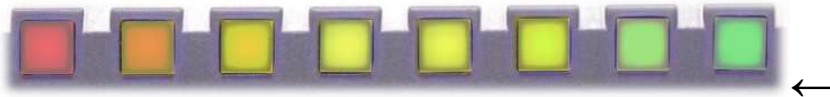
- Press “Shutdown”.

Shutdown sequence begins

DO NOT REMOVE POWER from the Unit until shutdown sequence is complete

Shutdown Sequence

During RCP-BR shutdown, the LCD screen goes blank and some pushbuttons extinguish. The **lower pushbutton row** is “Rainbow-illuminated” and extinguishes from Right-to-Left.



Shutdown Sequence is complete when last Red front button is extinguished.

To Start up and Re-boot after a proper shutdown

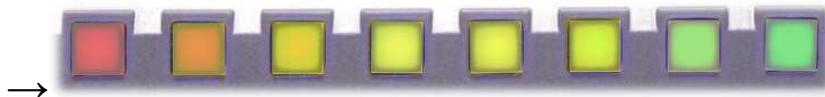
After RCP-BR has been properly shutdown, **AC Power needs to be removed for 10 secs and then re-applied to the unit** before the RCP-BR unit will re-start.

RCP-BR Start-up

Connect DC power to RCP-BR to unit.

Front pushbuttons illuminate. Start up takes a few minutes.

Bottom row of pushbuttons change colour, White to “Rainbow-illuminated”, from Left-to-Right:



The LCD screen turns on a few minutes after the Green button illuminates.

Start up is complete when control panel screens are shown on the LCD.

Note : During start up, on some units, the LCD display may not be fully blanked. This is normal.