

KXO-HDM

Dual channel HD-SDI monitoring output mezzanine

Installation Instructions

M860-9900-104

20 December 2012



A **BELDEN** BRAND

Copyright Notice

Copyright © 2009 – 2012, Miranda Technologies.

All rights reserved.

ATTENTION: Please read the following terms and conditions carefully. By using Kaleido-X documentation, you agree to the following terms and conditions:

Miranda Technologies hereby grants permission and license to owners of Kaleido-X to use their product manuals for their own internal business use. Manuals for Miranda Technologies products may not be reproduced or transmitted in any form or by any means, electronic or mechanical, including photocopying and recording, for any purpose unless specifically authorized in writing by Miranda Technologies.

A Miranda Technologies manual may have been revised to reflect changes made to the product during its manufacturing life. Thus, different versions of a manual may exist for any given product. Care should be taken to ensure that one obtains the proper manual version for a specific product serial number.

Information in this document is subject to change without notice and does not represent a commitment on the part of Miranda Technologies.

Title	KXO-HDM Installation Instructions
Part Number	M860-9900-104
Revision	20 December 2012, 5:21 pm

Electromagnetic Compatibility

FC FCC Statement

This equipment has been tested and found to comply with the limits for a Class A digital device, pursuant to part 15 of the FCC Rules. These limits are designed to provide reasonable protection against harmful interference when the equipment is operated in a commercial environment. This equipment generates, uses, and can radiate radio frequency energy and, if not installed and used in accordance with the instruction manual, may cause harmful interference to radio communications. Operation of this equipment in a residential area is likely to cause harmful interference in which case the user will be required to correct the interference at his own expense.

CE Declaration of Conformance (CE)

This equipment has been tested and found to comply with the requirements of the EMC directive 2004/108/CE:

- EN 55022 Class A Radiated and conducted emissions
- EN 61000-3-2 Limits for harmonic current emissions
- EN 61000-3-3 Limitation of voltage fluctuations and flicker
- EN 61000-4-2 Electrostatic discharge immunity
- EN 61000-4-3 Radiated, radio-frequency, electromagnetic field immunity
- EN 61000-4-4 Electrical fast transient immunity
- EN 61000-4-5 Surge transient immunity
- EN 61000-4-6 Conducted disturbance immunity
- EN 61000-4-11 Voltage dips, short interruptions and voltage variations immunity

Warranty Policies

Warranty information is available in the Support section of the Miranda Web site (www.miranda.com).

KXO-HDM Installation

The KXO-HDM kit includes all parts required to install a dual channel HD-SDI monitoring mezzanine on a KXO-Dual or KXO-Dual3 module, to add HD-SDI monitoring outputs to your Kaleido-X multiviewer. The multiviewer must have version 4.06 or later of the Kaleido-X Software.

Summary

<i>Introduction</i>	1
<i>Installing the KXO-HDM on a First-Generation KXO-Dual</i>	2
<i>Replacing the KXO-HDM on a First-Generation KXO-Dual</i>	5
<i>Installing the KXO-HDM on a KXO-Dual3</i>	7
<i>Replacing the KXO-HDM on a KXO-Dual3</i>	11

Introduction

The KXO-Dual supports the following HD-SDI output resolutions: 1080i 50/60, and 720p 50/60. The KXO-Dual3 supports 1080p 50/60, 1080i 50/60, and 720p 50/60. When you install the KXO-HDM mezzanine on a KXO-Dual3, 1080p support involves connecting the mezzanine's two coaxial cables to the appropriate connectors on the KXO-Dual3 card. If you install the mezzanine on a KXO-Dual card, then these cables are not used and require no manipulation.

Note: The DIP switches that were used to set the SDI output format with earlier versions of the Kaleido-X Software are not relevant anymore and their configuration can be safely ignored.

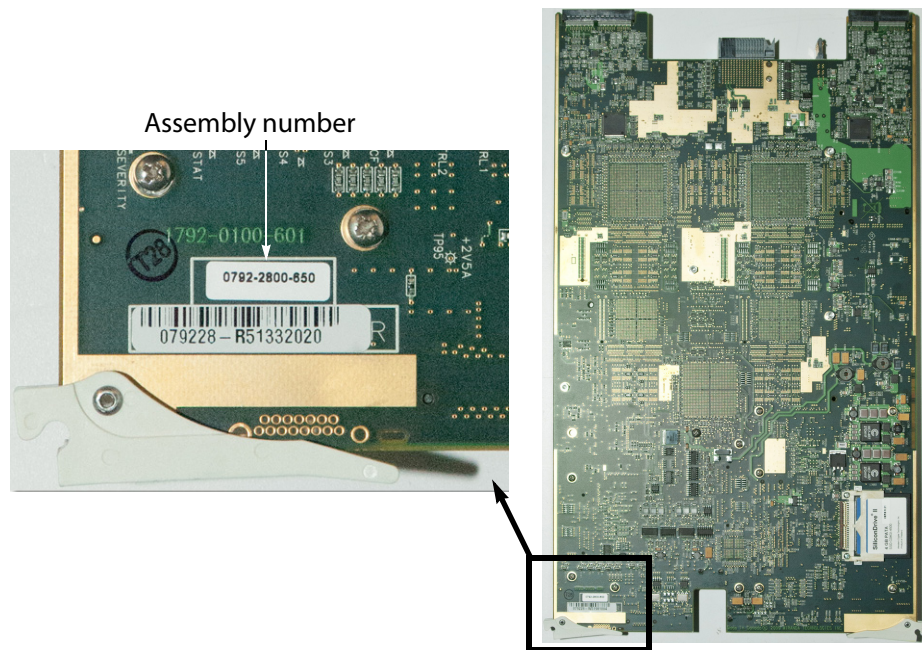
Installation instructions

- If your card's assembly number is between **0792-0100-400** and **0792-0100-599**, follow this procedure: [Installing the KXO-HDM on a First-Generation KXO-Dual](#) on page 2.
- For assembly numbers **0792-0100-600** and above, follow this procedure: [Installing the KXO-HDM on a KXO-Dual3](#) on page 7.

Replacement instructions

- If your card's assembly number is between **0792-0100-400** and **0792-0100-599**, follow this procedure: [Replacing the KXO-HDM on a First-Generation KXO-Dual](#) on page 5.
- For assembly numbers **0792-0100-600** and above, follow this procedure: [Replacing the KXO-HDM on a KXO-Dual3](#) on page 11.

To find your assembly number, look at the underside of the board near the bottom ejector (see picture below). The assembly number is printed on a small white label.



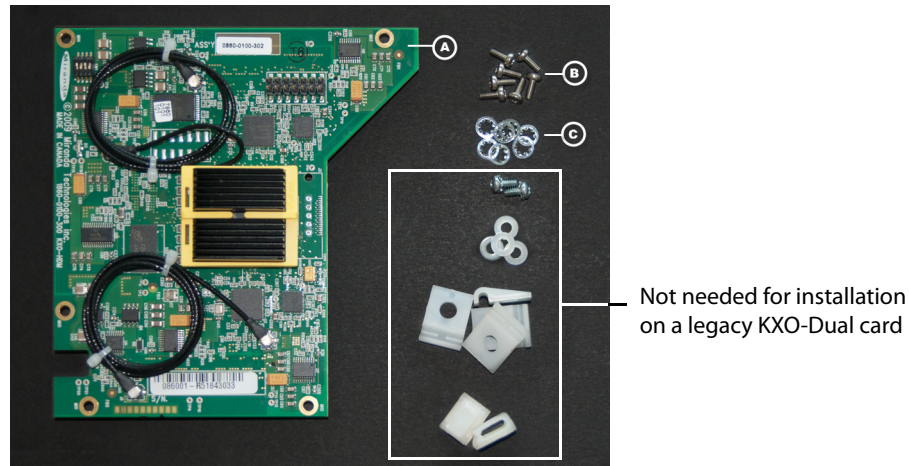
Installing the KXO-HDM on a First-Generation KXO-Dual

This installation procedure applies to the first generation of KXO-Dual boards only, which have an assembly number between **0792-0100-400** and **0792-0100-599**. See [Introduction](#) on page 1, for information on locating the assembly number.

The installation kit includes the following:

- A - One KXO-HDM mezzanine
- B - Seven screws M2.5 × 6mm
- C - Seven lock washers
- D - Two screws 4-40 × ¼ with lock washer
- E - Four washers
- F - Four screw-mount cable retainers
- G - Two adhesive cable retainers

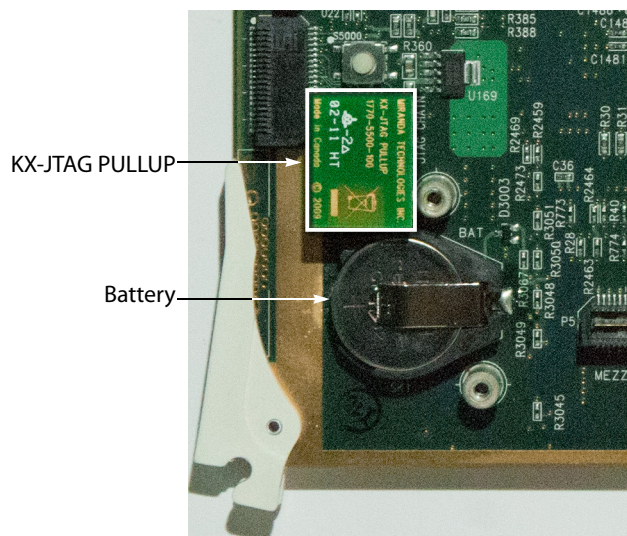
Since installing the KXO-HDM on a KXO-Dual does not involve connecting the mezzanine's coaxial cables (which are only meant to implement 1080p support on the KXO-Dual3), items D, E, F and G are not used, and only five M2.5 × 6mm screws and five lock washers are needed.



Before you start, make sure that you have a Phillips #1 screwdriver at hand, and that you are wearing a static control wrist strap. Allow approximately 15 minutes to complete the installation.

To install the KXO-HDM on a KXO-Dual card

- 1 Lay your KXO-Dual card on a work surface.
- 2 Remove the small PCB (KX-JTAG PULLUP, part no. 1770-5500-100), next to the battery, in the area near the bottom ejector, by gently pulling it away from the card.



The mezzanine is installed in the lower left corner of the card.

- 3 Locate the two mezzanine connectors as shown below.

KXO-HDM Installation

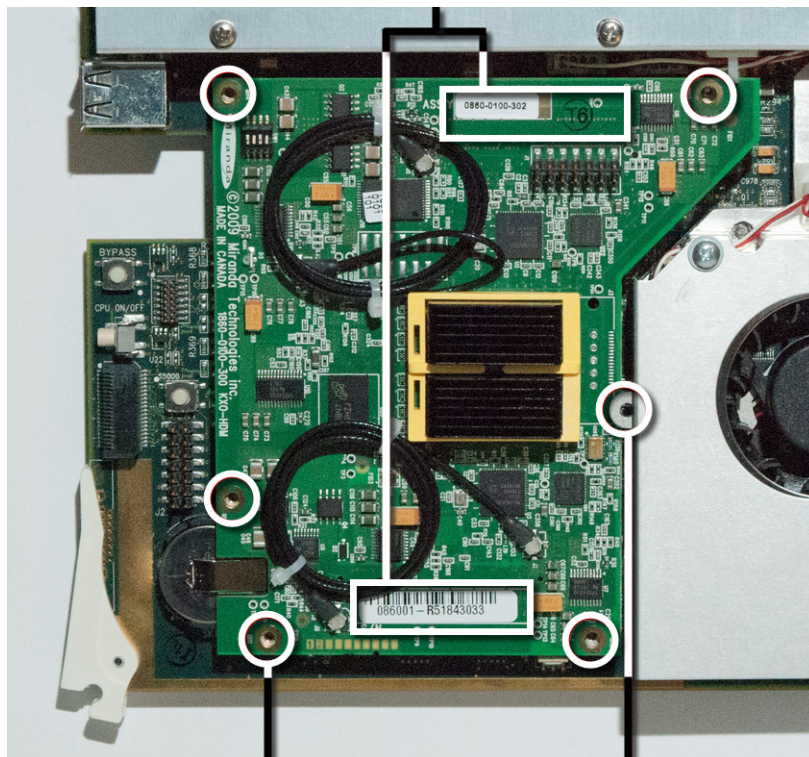
Installing the KXO-HDM on a First-Generation KXO-Dual



Mezzanine connectors

- 4 Place the mezzanine carefully unto the KXO-Dual card connectors.
The mezzanine fits underneath the large heatsink mounting bracket shown below.
- 5 While supporting the underside of the main board, apply pressure in the connector areas until the mezzanine is fully connected.

Connector areas



Five mezzanine mounting holes

Place mezzanine under heatsink mounting bracket

- 6 Place the five screws **B** and the five lock washers **C** in the mounting holes (shown above), and tighten carefully to attach the mezzanine to the spacers on the card.
 - 7 Reinstall the small PCB that you had to remove in [step 2](#) (see [page 3](#)).
- The mezzanine installation is now complete. Reseat the KXO-Dual card in the frame.

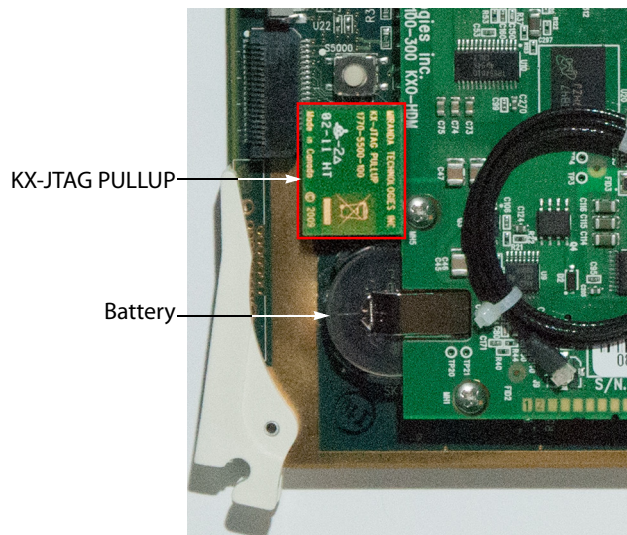
Replacing the KXO-HDM on a First-Generation KXO-Dual

This replacement procedure applies to the first generation of KXO-Dual boards only, which have an assembly number between **0792-0100-400** and **0792-0100-599**. See [Introduction](#) on page 1, for information on locating the assembly number.

Before you start, make sure that you have a Phillips #1 screwdriver at hand, and that you are wearing a static control wrist strap. Allow approximately 15 minutes to complete the installation.

To replace the KXO-HDM on a KXO-Dual card

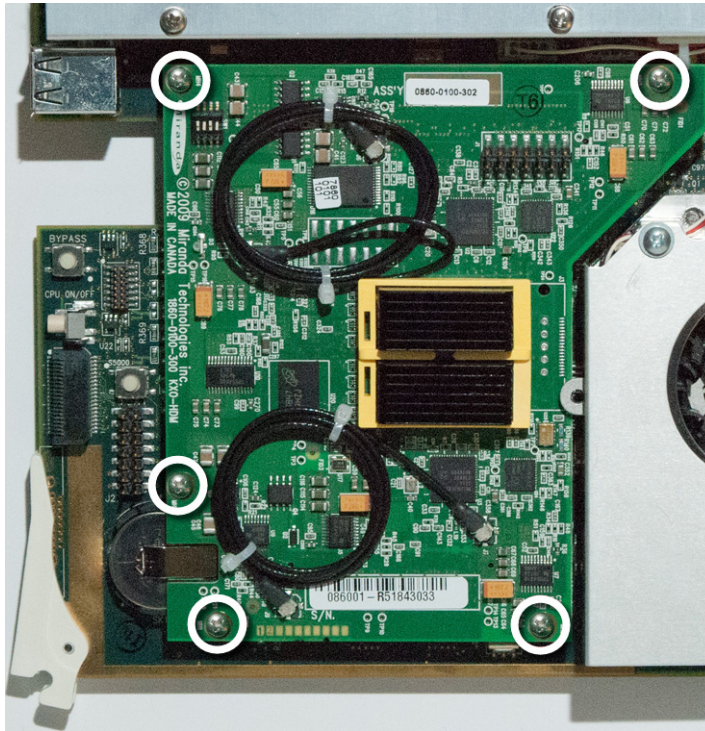
- 1 Lay your KXO-Dual card on a work surface.
- 2 Remove the small PCB (KX-JTAG PULLUP, part no. 1770-5500-100), next to the battery, in the area near the bottom ejector, by gently pulling it away from the card.



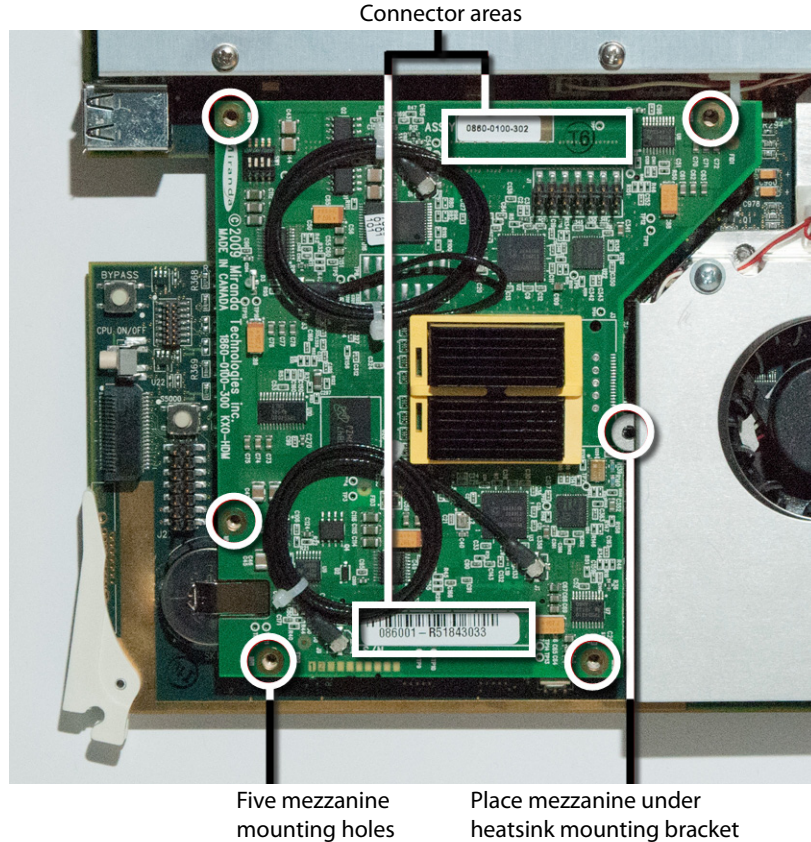
- 3 Remove the five screws and washers.

KXO-HDM Installation

Replacing the KXO-HDM on a First-Generation KXO-Dual



- 4 Carefully lift the KXO-HDM mezzanine to separate the connectors.
- 5 Place the new KXO-HDM mezzanine carefully onto the KXO-Dual card connectors.
The mezzanine fits underneath the large heatsink mounting bracket shown below.
- 6 While supporting the underside of the main board, apply pressure in the connector areas until the mezzanine is fully connected.



- 7 Place the five screws and five lock washers you removed in [step 3](#) back in their mounting holes (shown above), and tighten lightly.
- 8 Reinstall the small PCB that you had to remove in [step 2](#) (see [page 5](#)).
The mezzanine replacement is now complete. Reseat the KXO-Dual card in the frame.

Installing the KXO-HDM on a KXO-Dual3

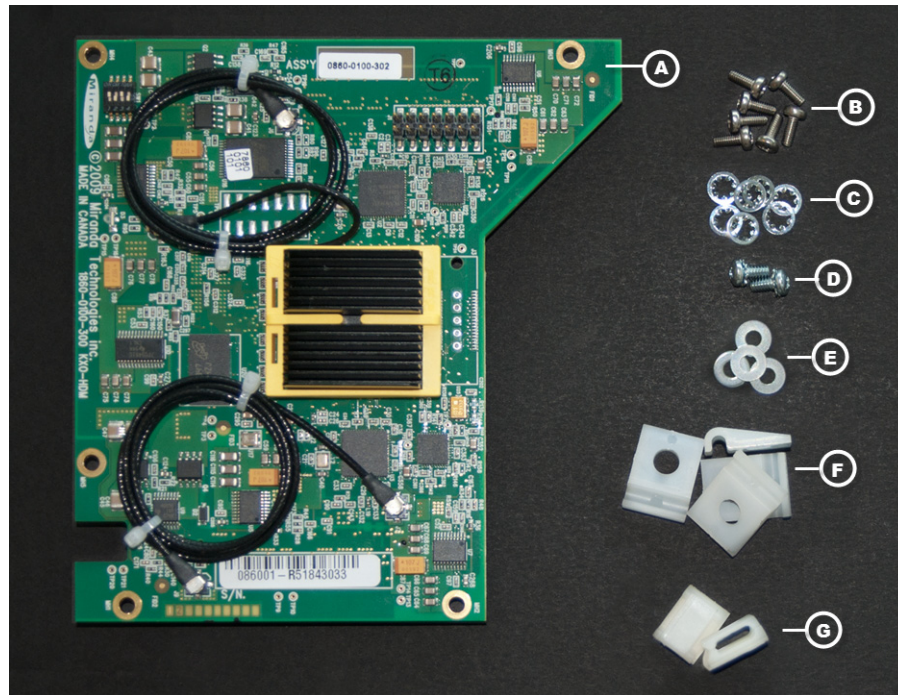
This installation procedure applies to the KXO-Dual3 boards only, which have assembly numbers **0792-0100-600** and above. See [Introduction](#) on page 1, for information on locating the assembly number.

The contents of the installation kit are shown in the picture below:

- A - One KXO-HDM mezzanine
- B - Seven screws M2.5 × 6mm
- C - Seven lock washers
- D - Two screws 4-40 × ¼ with lock washer
- E - Four washers
- F - Four screw-mount cable retainers
- G - Two adhesive cable retainers

KXO-HDM Installation

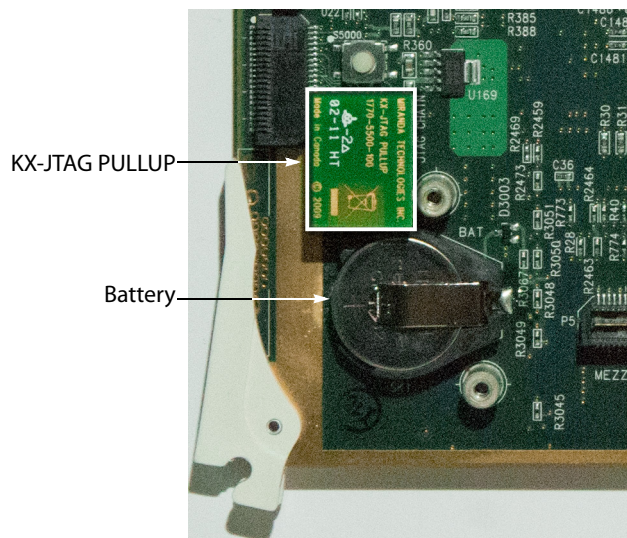
Installing the KXO-HDM on a KXO-Dual3



Before you start, make sure that you have the Phillips #1 screwdriver, and long nose flat pliers needed to perform this installation, and that you are wearing a static control wrist strap. Allow approximately 20 minutes to complete the installation.

To install the KXO-HDM on a KXO-Dual3 card

- 1 Lay your KXO-Dual3 card on a work surface.
- 2 Remove the small PCB (KX-JTAG PULLUP, part no. 1770-5500-100), next to the battery, in the area near the bottom ejector, by gently pulling it away from the card.



The mezzanine is installed in the lower left corner of the card.

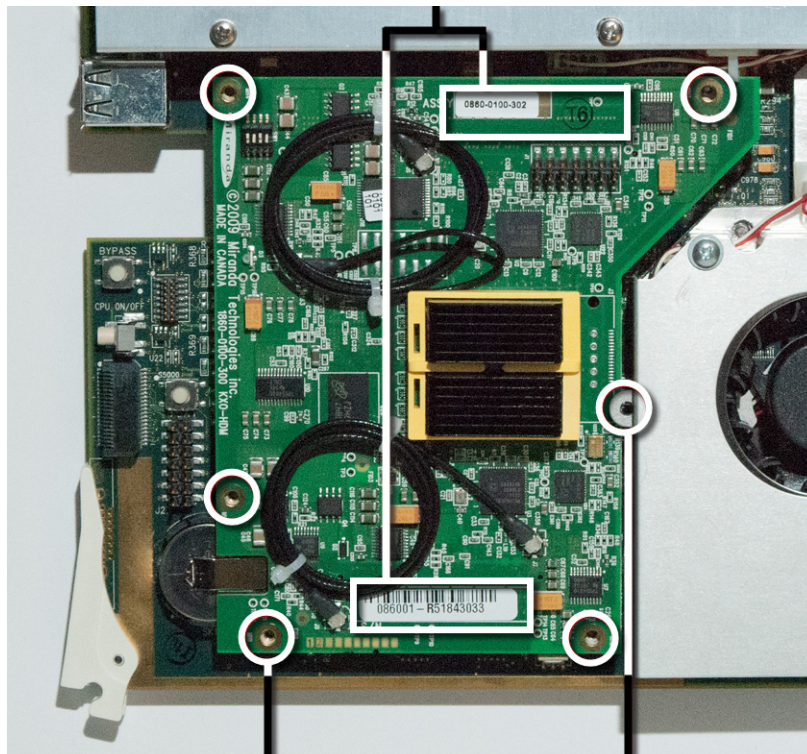
- 3 Locate the two mezzanine connectors as shown below.



Mezzanine connectors

- 4 Place the mezzanine carefully onto the KXO-Dual3 card connectors.
The mezzanine fits underneath the large heatsink mounting bracket shown below.
- 5 While supporting the underside of the main board, apply pressure in the connector areas until the mezzanine is fully connected.

Connector areas



Five mezzanine mounting holes

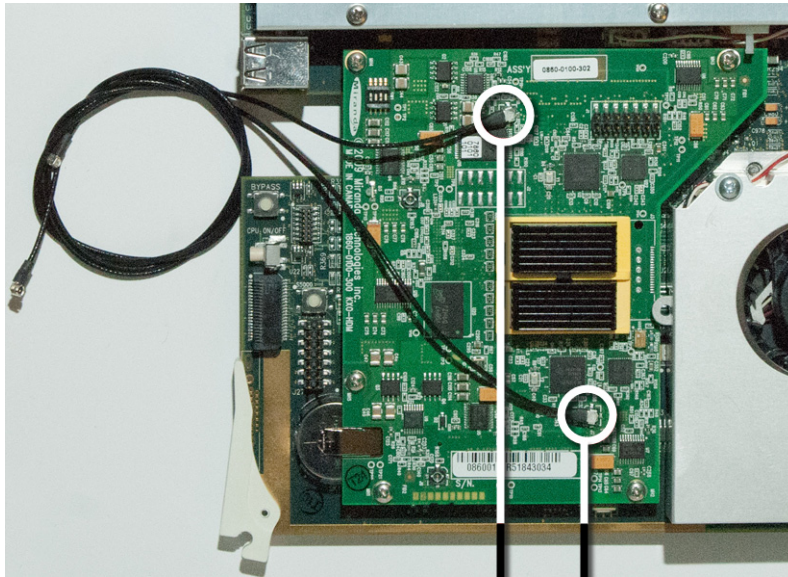
Place mezzanine under heatsink mounting bracket

- 6 Place five screws **B** and five lock washers **C** in the mounting holes (shown above), and tighten carefully to attach the mezzanine to the spacers on the card.
- 7 Unplug the coaxial cables from the *dummy* connectors, open the plastic cable ties, and then unwind the cables.

TIP

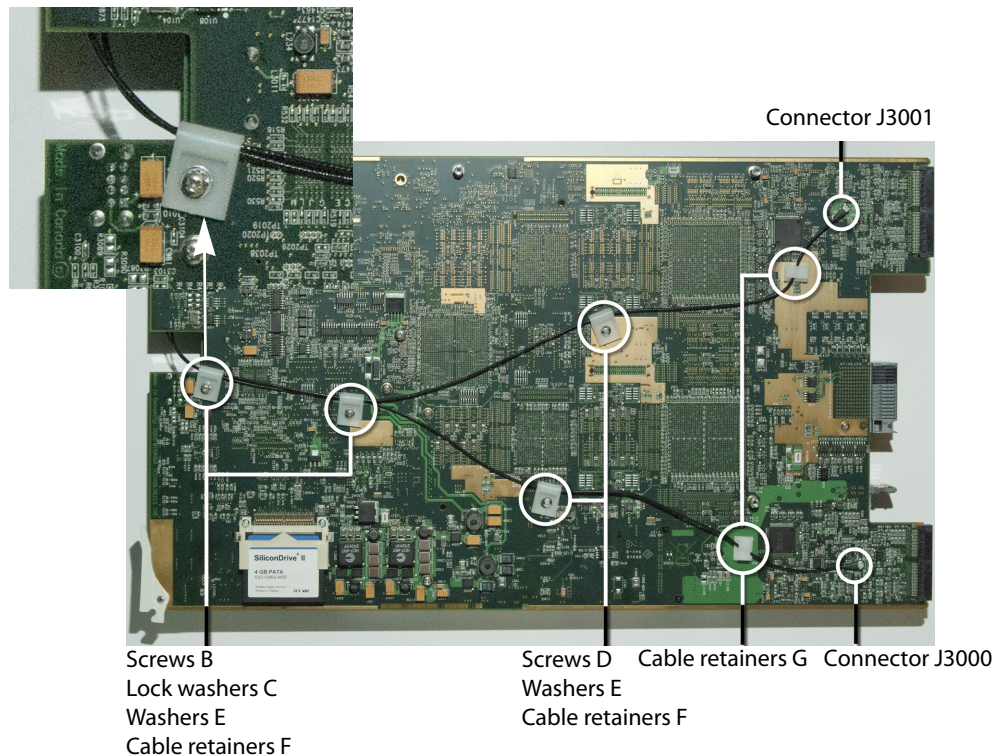
To open the cable ties without cutting them, crush their ratchet box by using long nose flat pliers.

The picture below shows where the *working* connectors **J6** and **J7** are located.



Connector J6 Connector J7

- 8 Turn the card over, and then use the cut-out on the front edge to route the cables.
- 9 Plug the coaxial cables in the two miniature connectors as follows:
 - mezzanine connector **J6** to KXO-Dual3 card connector **J3000**,
 - mezzanine connector **J7** to KXO-Dual3 card connector **J3001**.



- 10 Secure the coaxial cables using the hardware described in the picture above.
The four washers E are inserted between lock washer and cable retainer. In most of the mounting holes used, there are hexagonal supports that need to be removed before attaching the plastic cable retainers.
- 11 Reinstall the small PCB that you had to remove in [step 2](#) (see [page 8](#)).
The mezzanine installation is now complete. Reseat the KXO-Dual3 card in the frame.

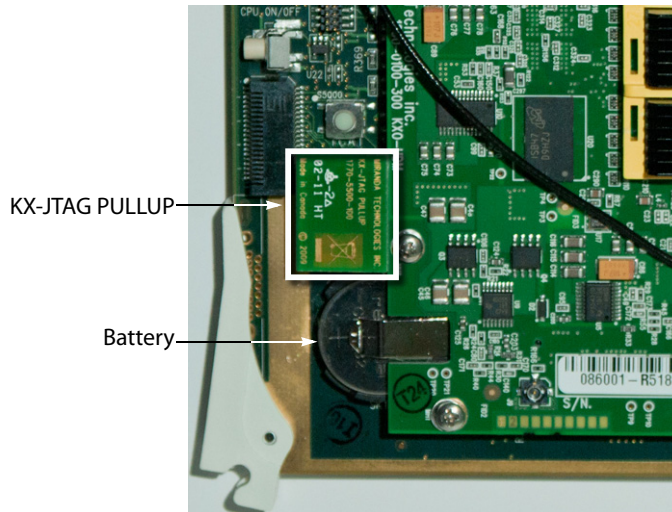
Replacing the KXO-HDM on a KXO-Dual3

This replacement procedure applies to the KXO-Dual3 boards only, which have assembly numbers **0792-0100-600** and above. See [Introduction](#) on page 1, for information on locating the assembly number.

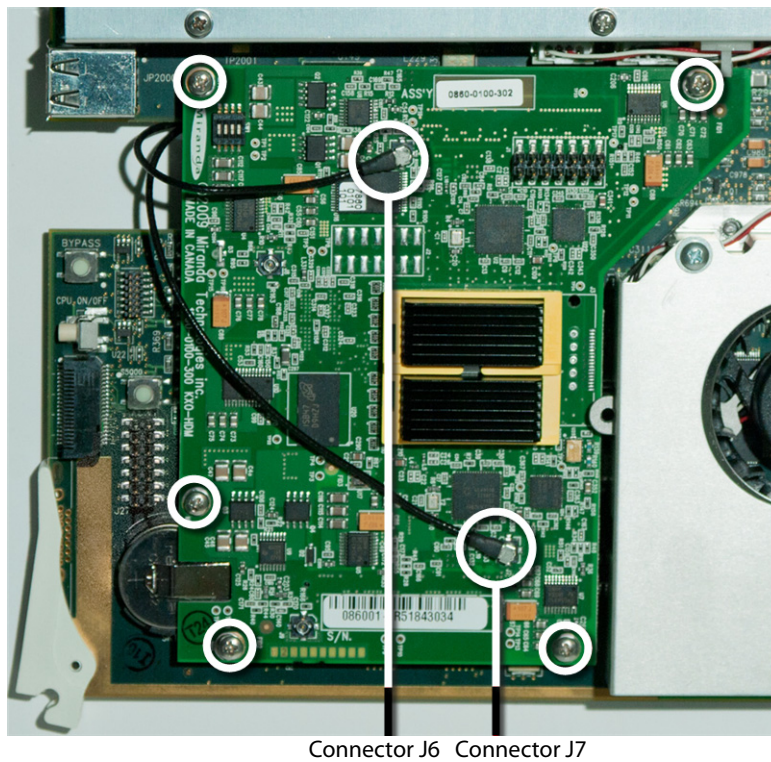
Before you start, make sure that you have a Phillips #1 screwdriver at hand, and that you are wearing a static control wrist strap. Allow approximately 15 minutes to complete the installation.

To replace the KXO-HDM on a KXO-Dual3 card

- 1 Lay your KXO-Dual3 card on a work surface.
- 2 Remove the small PCB (KX-JTAG PULLUP, part no. 1770-5500-100), next to the battery, in the area near the bottom ejector, by gently pulling it away from the card.



- 3 Remove the five screws and washers, and unplug both coaxial cables from the **J6** and **J7** connectors.

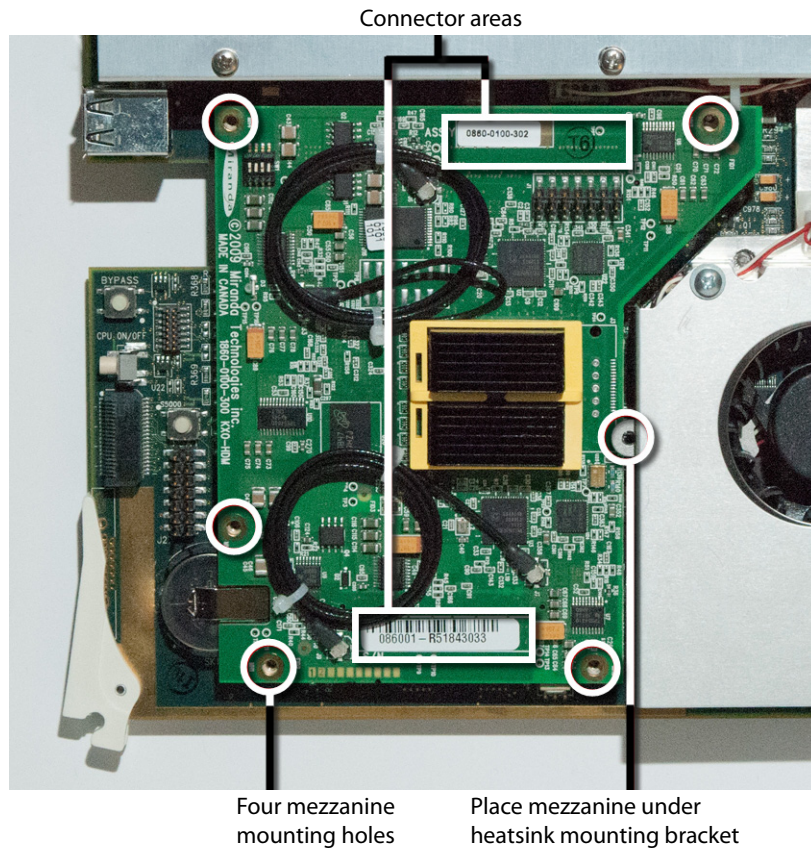


IMPORTANT

Note where the connectors **J6** and **J7** are located.

- 4 Carefully lift the KXO-HDM mezzanine to separate the connectors.
5 Place the new KXO-HDM mezzanine carefully unto the KXO-Dual3 card connectors.
The mezzanine fits underneath the large heatsink mounting bracket shown below.

- 6 While supporting the underside of the main board, apply pressure in the connector areas until the mezzanine is fully connected.



- 7 Place the five screws and five lock washers you removed in [step 3](#) back in their mounting holes (shown above), and tighten lightly.
Assuming the original coaxial cables you disconnected in [step 3](#) are still in good condition, you can unplug the new mezzanine's coaxial cables from their connectors, and save them for future use.
- 8 Plug the coaxial cables you disconnected in [step 3](#) back into the **J6** and **J7** connectors, making sure that:
 - the cable you connect to mezzanine connector **J6** is the one attached to the KXO-Dual3 card connector **J3000**, and
 - the cable you connect to mezzanine connector **J7** is the one attached to the KXO-Dual3 card connector **J3001**.
- 9 Reinstall the small PCB that you had to remove in [step 2](#) (see [page 11](#)).
The mezzanine replacement is now complete. Reseat the KXO-Dual3 card in the frame.



Miranda Technical Support

For technical assistance, please contact the Miranda Technical Support center nearest you:

Americas

Office hours: 9:00 a.m. – 9:00 p.m. (EST)

Telephone: 1-800-224-7882

Fax: +1 514 335 1614

E-mail: support@miranda.com

Asia

Office hours: 9:00 a.m. – 5:00 p.m. (GMT+8)

Telephone: +852 2539 6987

Fax: +852 2539 0804

E-mail: asiatech@miranda.com

Europe, Middle East, Africa, UK

Office hours: 9:00 a.m. – 6:00 p.m. (GMT)

Telephone: +44 118 952 3444

Fax: +44 118 952 3401

E-mail: eurotech@miranda.com

China

Telephone: +86 10 5873 1814

E-mail: asiatech@miranda.com

France

Office hours: 9:00 a.m. – 5:00 p.m. (GMT+1) Toll Free: 1-800-224-7882 (US and Canada)

Telephone: +33 1 55 86 87 88

Fax: +33 1 55 86 00 29

E-mail: eurotech@miranda.com

EMERGENCY After Hours (Global)

Telephone: +1 514 333 1772

Corporate Head Office

Miranda Technologies

3499 Douglas-B.-Florenani, St-Laurent, Quebec, Canada H4S 2C6

Telephone: +1 514 333 1772

Fax: +1 514 333 9828

Web: www.miranda.com