

# NV96xxV

NV9000 Virtual Control Panels

## Windows Setup Guide

UG0020-07

01 Sep 2014



---

## Copyright & Trademark Notice

Copyright © 2014 Grass Valley. All rights reserved.

Belden, Belden Sending All The Right Signals, and the Belden logo are trademarks or registered trademarks of Belden Inc. or its affiliated companies in the United States and other jurisdictions. Grass Valley, NVISION, and NV96xx are trademarks or registered trademarks of Grass Valley. Belden Inc., Grass Valley, and other parties may also have trademark rights in other terms used herein.

## Terms and Conditions

Please read the following terms and conditions carefully. By using NV96xx documentation, you agree to the following terms and conditions.

Miranda hereby grants permission and license to owners of NV96xx routers to use their product manuals for their own internal business use. Manuals for Miranda products may not be reproduced or transmitted in any form or by any means, electronic or mechanical, including photocopying and recording, for any purpose unless specifically authorized in writing by Miranda.

A Miranda manual may have been revised to reflect changes made to the product during its manufacturing life. Thus, different versions of a manual may exist for any given product. Care should be taken to ensure that one obtains the proper manual version for a specific product serial number.

Information in this document is subject to change without notice and does not represent a commitment on the part of Miranda.

Warranty information is available in the support section of the Miranda web site ([www.grassvalley.com](http://www.grassvalley.com)).

Title	NV96xx Virtual Panels Setup Guide
Part Number	UG0020-07
Revision	1.7 (29 Aug 14)

## Change History

Rev.	Date	ECO	Description	Approved
1.0	10 Jul 07	13121	Initial document release.	D.Cox
1.1	19 Aug 08	14937	Added NV9609V.	D.Cox
1.2	26 Mar 09	15711	Format change.	D.Cox
1.3	31 Jul 09	15991	Added panel types. Minor new features.	D.Cox
1.4	19 Jul 10	16236	Added minor new features.	D.Cox
1.5	24 Aug 12	18502	Brought up to date with NV9000-SE Utilities v6.2. Added NV9647V and NV9654V.	D.Cox
1.7	29 Aug 14	19037	Minor document changes	D.Cox
1.7	29 Aug 14	<b>19309</b>	Added NV9648V and NV9649V.	D.Cox

## Safety Compliance

### **FC** FCC Statement

This equipment has been tested and found to comply with the limits for a Class A digital device, pursuant to part 15 of the FCC Rules. These limits are designed to provide reasonable protection against harmful interference when the equipment is operated in a commercial environment. This equipment generates, uses, and can radiate radio frequency energy and, if not installed and used in accordance with the instruction manual, may cause harmful interference to radio communications. Operation of this equipment in a residential area is likely to cause harmful interference in which case the user will be required to correct the interference at his own expense.

### **CE** Declaration of Conformance (CE)

All of the equipment described in this manual has been designed to conform with the required safety and emissions standards of the European Community. Products tested and verified to meet these standards are marked as required by law with the CE mark.

When shipped into member countries of the European Community, this equipment is accompanied by authentic copies of original Declarations of Conformance on file in the Grass Valley offices in Grass Valley, California USA.

### Software License Agreement and Warranty Information

Contact Miranda for details on the software license agreement and product warranty.








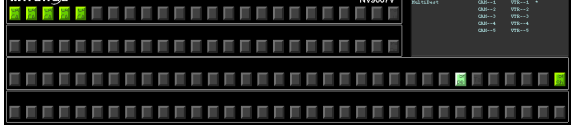


# Virtual Control Panels

This document tells you how to install and set up virtual control panels on computers running Windows.

## Introduction

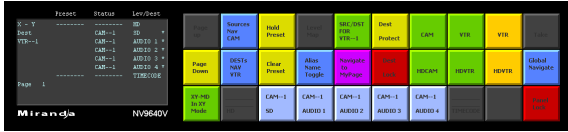
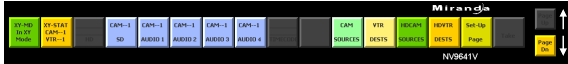

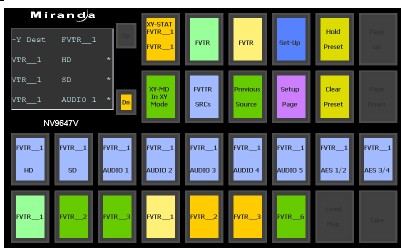
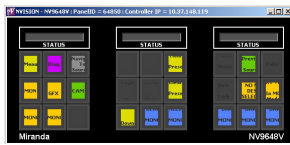
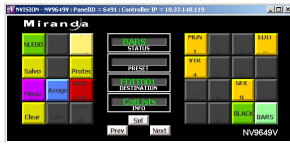

Miranda's virtual panels are software control panels (a.k.a. GUIs) for NV9000 router control systems. A virtual panel runs on a computer connected to your NV9000's house network or to your NV9000 router/panel network.

The virtual panels correspond closely to physical control panels of similar names:

Virtual Panel	Physical Panel	Thumbnail
NV9601V	NV9601	
NV9602V	NV9602	
NV9603AV	NV9603A	
NV9605V	NV9605	
NV9606V	NV9606	
NV9607V	NV9607	
NV9609V	NV9609	
NV9616V	NV9616	

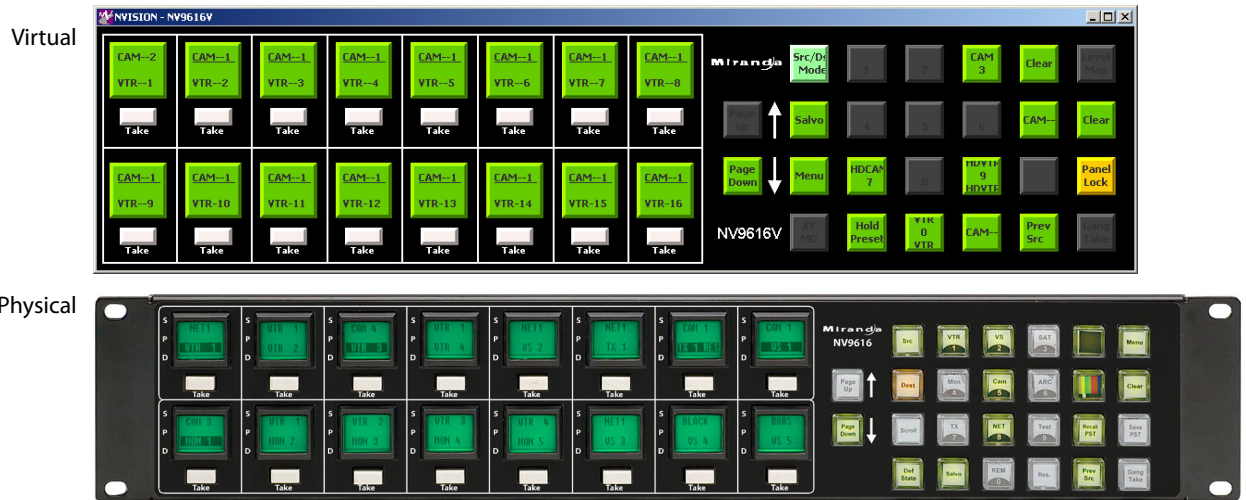
# Virtual Control Panels

## Virtual Control Panels

Virtual Panel	Physical Panel	Thumbnail
NV9640V	NV9640	
NV9641V	NV9641	
NV9642V	NV9642	
NV9647V	—	
NV9648V	NV9648	
NV9649V	NV9649	
NV9654V	NV9654	

Virtual panels use the same configurations as the corresponding physical panels. Using a virtual control is the same as using the matching physical control panel except for a few minor points. Physical panels have tactile pushbuttons. Some physical panels have displays; others have GPIO buttons at the rear of the panel. The virtual panels emulate the buttons and displays of the phys-

ical panels, but of course, have no GPIO connections. Compare, for example, the NV916V with the NV9616:



(The configurations shown here are samples only; your configurations will differ.)

This document discusses a few configuration issues. If you want to understand panel configuration refer to the NV9000-SE Utilities User's Guide or its help files, or to the NV9000 User's Guide and its associated control panel user's guides.

## Requirements

Virtual panels run under Macintosh and Windows, subject to the following constraints:

- Windows 2000, XP, Vista, or Windows 7.
- Mac OS X, version 10.4.x or newer, with JRE (Java runtime environment) 1.6.0 or newer.

To use a virtual panel, your computer must be connected to an NV9000 router control system.

Requirements:

NV9000-SE Utilities: revision 6.4.0 or newer	NV9601V: SV0696-04 or newer
NV9000: revision 6.4.0 or newer	NV9602V: SV0949-02 or newer
Monitor: 1152 horizontal pixels or more	NV9603AV: SV0698-04 or newer
	NV9605V: SV0700-05 or newer
	NV9606V: SV0952-02 or newer
	NV9607V: SV0953-02 or newer
	NV9609V: SV0806-03 or newer
	NV9616V: SV0702-04 or newer
	NV9640V: SV0704-05 or newer
	NV9641V: SV0706-04 or newer
	NV9642V: SV0743-02 or newer
	NV9647V: SV1140-00 or newer
	NV9648V: SV1210-00 or newer
	NV9649V: SV1208-00 or newer
	NV9654V: SV1166-00 or newer

## Installation

You will find the virtual panel installation programs on the NV9000 Virtual Panels Installation disk (SB0217-08) you received from Miranda. Load the CD in your CD drive and navigate to the installation program for the virtual panel of your choice. You can install any or all virtual panels. Choose the Windows folder (for Windows installation). The Windows installation program has a .exe extension. Each installation program installs one virtual panel. All 12 installation programs are the same except for the name of the control panel.

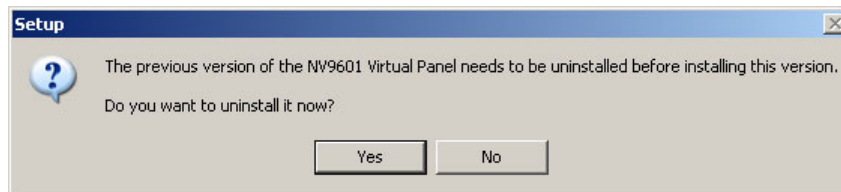
- ▲ Your computer need **not** be connected to a router control system when you run the installation program(s).

Double-click the installation program and wait a few seconds while it loads. Then you will see its initial screen:



Click 'Cancel' if you wish to quit; click 'Next' to proceed.

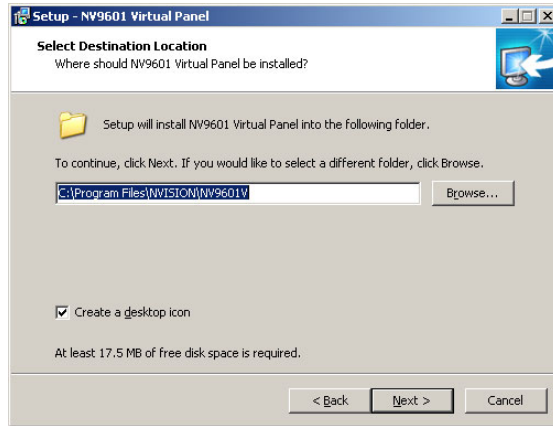
If you have a previous version of the virtual panel, you will be asked for permission to uninstall it:



Respond 'Yes' if you want to proceed with your installation.

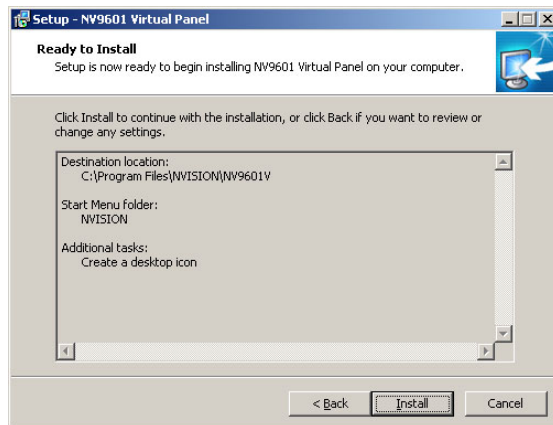


The next screen allows you to specify where to install the software:



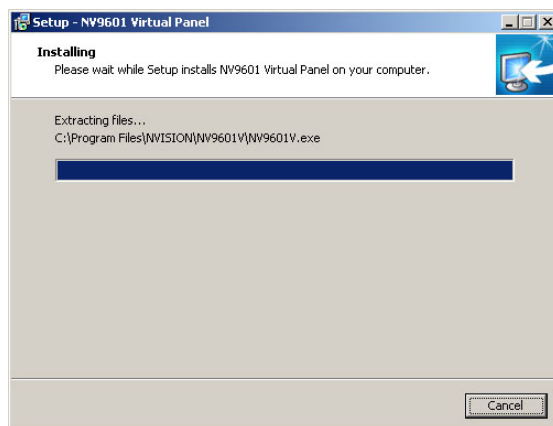
We recommend that you use the default installation folder. However, you can click 'Browse..' to navigate to the folder in which to install the panel software. Click 'Cancel' if you wish to quit; click 'Next' to proceed. Click 'Back' if you want to go back to the previous screen.

The next screen summarizes your choices so that you can make changes if necessary:

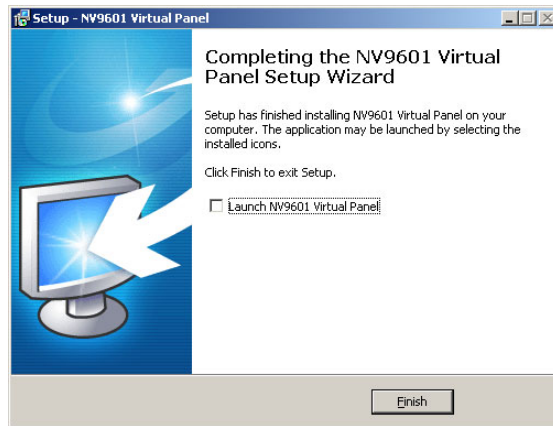


Click 'Cancel' if you wish to quit; click 'Back' if you want to go back to the previous screen. Click 'Install' to start the actual installation.

The next screen is a progress indicator:



The installation does not take long. The final screen appears indicating that installation is complete:



If the installation fails, call Tech Support.

The default installed pathname for any of the virtual panels is

`C:\Program Files\NVISION\<panelname>\<panelname>.exe`

The default path in the start menu

`Start > Programs > NVision > <panelname>`

The installer places a shortcut to your virtual panel on your desktop.

## Initial Setup

At some time after you install the virtual panel, and before it becomes operational, you must perform a brief setup. The setup (1) identifies the router control system's primary controller (or a redundant system's virtual IP address) and (2) selects a configuration for the virtual panel.

- ▲ Your computer must be connected to your router control system.
- ▲ You can use NV9000-SE Utilities to review existing panel configurations. (These are labelled HW Panels.) If you have no configuration of the type required for a virtual panel, you will have to create one.

Follow these steps to perform the setup:

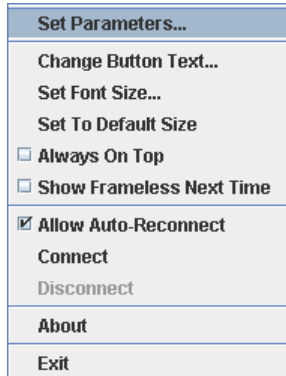
### 1 Launch the virtual panel.

Either double-click the application directly, double-click its desktop shortcut, or choose the program from the Windows start menu. The panel will appear after several seconds and it will appear black with dark gray buttons.

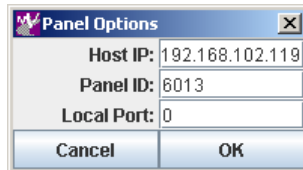
- ▲ If a panel does not appear, or the panel is minimized, take the corrective steps outlined under [Upgrading Old Virtual Panels](#) on page 14.

Every virtual panel has a context menu in which to select options. (There is no other menu.) Right-click anywhere in the virtual panel (except over a "display" region) to get the context menu.

This is the context menu:



2 Choose 'Set Parameters' from the context menu. The 'Panel Options' dialog appears:



Enter the IP address of the primary system controller (or the virtual IP address of a redundant system). Enter the panel ID of the panel configuration you want to use. Click 'OK'.

In general, a "local port" value of 0 will be suitable. If, after setting up your virtual panel, it fails to function (because of firewall or security protection), set the local port to a non-zero value, corresponding to an enabled port on your firewall.

Multiple panels need distinct local port numbers. (A zero value tells the operating system to use the next available port.)

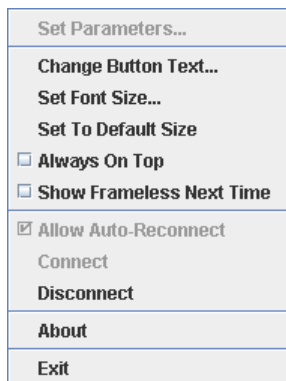
▲ The term "host" refers to the active system controller.

3 Open the context menu again and Click 'Connect'.

If the IP address and panel ID were valid entries, the panel buttons and display (if present) will illuminate in appropriate colors and with appropriate text, defined by the panel configuration, and the panel will be connected to the router control system.

(You define panel configurations and panel IDs in NV9000-SE Utilities.)

When a panel is connected, the context menu changes slightly:



The 'Set Parameter', 'Connect', and 'Allow Auto-Reconnect' commands become disabled and the 'Disconnect' command becomes enabled. You cannot change the IP address or panel ID when the virtual panel is connected.

Other commands remain enabled.

- 4 Open the context menu once again and Click 'Exit'.

The 'Exit' command closes the virtual panel. After a few seconds, the router control system will detect that the panel is off-line.

When panel operators start a virtual panel that has been set up this way, it will automatically reconnect (if so enabled) to the router control system. If automatic reconnect is not enabled, the operator must reconnect manually.

- ▲ There is no real difference between choosing 'Exit' and clicking the close button (X) at the top right of the panel window.

For a review of the context menu options, see [Context Menu Commands](#) on page 10.

## Configuration

It is in NV9000-SE Utilities that you create and manage configurations for the virtual panels (and other control panels).

NV9000-SE Utilities supports what are called hardware panels and software panels. Software panels are the EC9700 (for router control) and EC9710 (for router status).

NV9000-SE Utilities knows nothing about "virtual panels." Virtual panels can be considered "virtual *hardware* panels" and to create a configuration for a virtual panel in NV9000-SE Utilities, you create a hardware panel configuration of matching type. For example, go to "HW panels" and create an NV9616 panel configuration to use with an NV9616V virtual panel.

A panel configuration consists of a configuration file (with a suffix such as .601, .640, etc.) and a .legends file. The configuration file provides initial *states* for the panel. The .legends file provides *fixed button text* for the virtual panel. The configuration files are generated by NV9000-SE Utilities every time you save a panel configuration. The panel configurations do not become active until you issue either an "Update Panel Configuration" or "Write Configuration to Local System" command in NV9000-SE Utilities.

Every virtual panel requires a unique panel ID. (In fact, *all* control panels must have a unique panel ID.) You can run multiple instances of any virtual panel on your computer. Each instance requires a distinct panel ID, even if the multiple instances are to have identical configurations. Configuration files are, however, identified by panel ID. Consequently, you must have a unique configuration file for every instance of every panel. If your system has 12 panels all using the same configuration, you must have 12 copies of that configuration file (and 12 copies of the matching .legends file).

- ▲ Physical hardware panels ignore the .legends file. Button legends for some of the physical panels are placed on the button using clear plastic overlays.

## Minor Configurations

In addition to the panel configuration, the virtual panels also allow minor display configurations. Virtual panel operators may change display parameters during operation. The display configurations include:

- Resizing the panel on the screen.
- Changing the font size.
- Setting the 'Always On Top' flag. When this option is enabled, the panel is always displayed in front of every other window on your Windows "desktop."
- Displaying the panel with, or without, its Windows frame.
- Whether to reconnect to the router control system automatically (on startup or restart of the control system).

The options are available in the context menu. See [Context Menu Commands](#) on page 10.

- ▲ Each instance of any panel starts with settings contained in the last saved .INI file for that panel.

## Usage

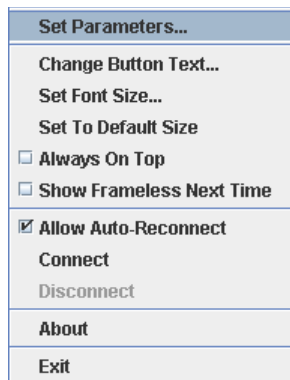
Functionally, the virtual panels are exactly identical to their matching hardware panels. However, there are a few slight operational differences. The most obvious is that with a physical panel, you press a physical button and with a virtual panel, you click on a colored rectangle (a virtual "button") that might change color or text, depending on context.

## Differences between virtual panels and hardware panels

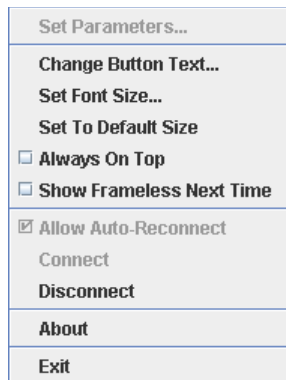
- 1 Virtual panels have no GPIOs. GPIO configurations apply to the NV9605, NV9640, and NV9641 hardware panels and are ignored by the virtual panels.
- 2 Virtual panel buttons are relegendable. Buttons on some physical panels have fixed legends (plastic button inserts). (The NV9616, NV9640, NV9641, and NV9642 physical panels do have relegendable buttons.)
- 3 The virtual panels have a context menu with which to connect or disconnect the panel and to select certain display options. (See [Minor Configurations](#) previous.)
- 4 The virtual panels can be resized and repositioned on your screen.
- 5 Dark (i.e, disabled) buttons illuminate if you click on them and hold the mouse down.

## Context Menu Commands

The context menu presents 3 dialogs, 3 checkbox options, and 5 commands:



**Before Connection**



**After Connection**

When a virtual panel is not connected to a router control system, the 'Disconnect' command is disabled.

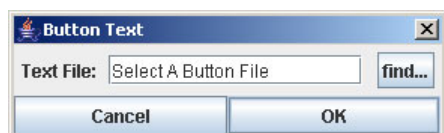
When a virtual panel is connected to a router control system, the 'Set Parameters', 'Connect', and 'Allow Auto Reconnect' options are disabled.

### Set Parameters...

Use this command to set the IP address of the primary system controller and the panel ID. See [Initial Setup](#) on page 6 for a discussion.

### Change Button Text...

Normally you would never use this command. You might occasionally use this command to update the button text for your virtual panel. It displays a dialog in which you can browse to select the appropriate .legends file:



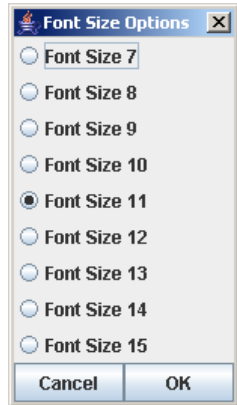
In most case, you will find .legends files in the following folder in the NV9000 system controller (and not on your PC):

C:\NVision\envy\usersys\live\

(A .legends file provides the fixed button text for the panel configuration.)

### Set Font Size...

Use this command to select the text size for your virtual panel. The command presents a dialog having these choices:



The panel retains its selected font size from session to session.

### Set to Default Size

Use this command to restore the virtual panel to its default size.

The panel retains its screen position and its size (whether default or not) from session to session.

### Always On Top

If you mark the 'Always On Top' checkbox, the virtual panel is always displayed in front of every other window on your Windows "desktop."

If you have more than one designated "always on top," the panel you are actively using is in front of the others.

The panel retains its "always on top" setting from session to session.

### Show Frameless Next Time

If you mark the 'Show Frameless Next Time' checkbox, the virtual panel is displayed without its Windows frame, and slightly smaller, the next time you start the panel. The option remains set until you change it.

When the checkbox is unmarked, the virtual panel has a Windows frame with Windows controls.

### Allow Auto Reconnect

If you mark the 'Allow Auto Reconnect' checkbox, the virtual panel reconnects to the router control system automatically (on startup). You will have to assign new and unique panel IDs to every instance before you connect it.

▲ The panel ID of any control panel anywhere in a router control system must be unique.

### Connect

Use this command to connect a virtual panel to the router control system.

## Disconnect

Use this command to disconnect a virtual panel from the router control system.

## About

Use this command to obtain the current software revision data:



It is especially important to know this information when you are placing calls to technical support.

## Exit

Use this command to close the virtual panel application. It is automatically disconnected. The router control system requires a few seconds to detect that the panel was disconnected.

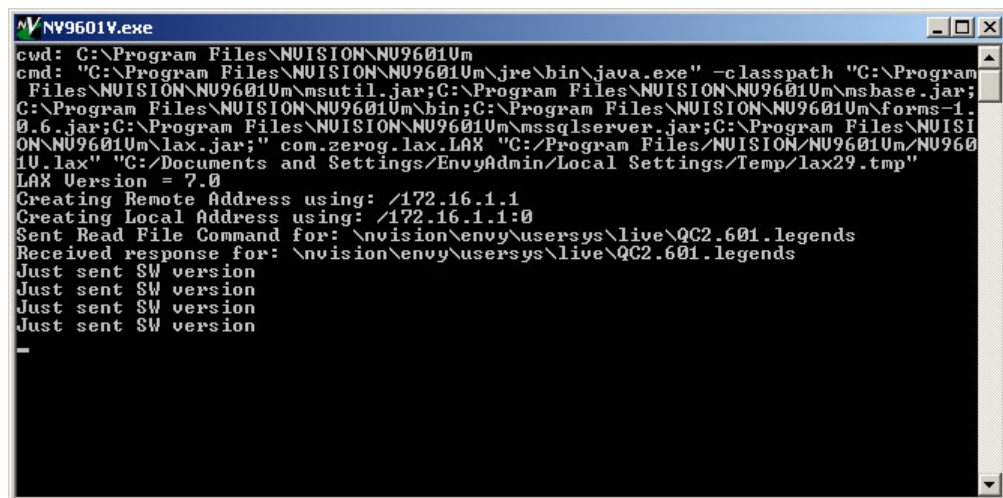
## Notes

### Diagnostic Launch

(Diagnostic launch is available only under Windows.)

By holding the CTRL key down when you launch a virtual panel, you can place the panel in a diagnostic mode. This mode displays a "DOS box" (in addition to the virtual panel) that you can use to monitor the exchange between the virtual panel software and the system controller.

This is an example of such an exchange:



```
NV9601V.exe
cmd: C:\Program Files\NUISTION\NU9601Um
cmd: "C:\Program Files\NUISTION\NU9601Um\jre\bin\java.exe" -classpath "C:\Program
Files\NUISTION\NU9601Um\msutil.jar;C:\Program Files\NUISTION\NU9601Um\msbase.jar;
C:\Program Files\NUISTION\NU9601Um\bin;C:\Program Files\NUISTION\NU9601Um\forms-1-
0.6.jar;C:\Program Files\NUISTION\NU9601Um\mssqlserver.jar;C:\Program Files\NUISTI
ON\NU9601Um\lax.jar;" com.zerog.lax.LAX "C:/Program Files/NUISTION/NU9601Um/NU960
1U.lax" "C:/Documents and Settings/EnvyAdmin/Local Settings/Temp/lax29.tmp"
LAX Version = 7.0
Creating Remote Address using: /172.16.1.1
Creating Local Address using: /172.16.1.1:0
Sent Read File Command for: \nvision\envy\usersys\live\QC2.601.legends
Received response for: \nvision\envy\usersys\live\QC2.601.legends
Just sent SW version
Just sent SW version
Just sent SW version
Just sent SW version
```



## Hints

### Multiple Instances of the Same Virtual Panel

Every instance starts with the last saved .INI file for that virtual panel type. (There is one and only one .INI file for any application program.)

### Resizing the Panel that is Displayed with No Frame

When the panel has no frame, dragging the lower right corner works, but does not provide any feedback until you release the cursor. Then the frame displays at its new size.

Reducing the panel size will generally crop off many of the panel's buttons and features.

Resizing non-uniformly might distort panel buttons and features considerably.

The frame can be restored to its default size with the context menu's 'Set Default Size' command.

### Restarting a Panel

Wait at least 10 seconds between stopping a panel and restarting the panel. The router control system needs a few seconds to register the fact that the panel went off-line. No harm will come if you do not wait, but it might take longer (up to 30 seconds) for the panel to reconnect.

### Dark Buttons

Some panel buttons can be disabled dynamically when you perform certain operations.

Disabled buttons are dark gray and you probably will not be able to read the button text. If you need to read the text of a disabled button, click-and-hold the cursor on the button. It will illuminate and you can read the text.

In cases where buttons do go dark (become disabled), it is advisable to know what buttons you can or should click. Read the NV9000-SE Utilities User's Guide or help files, or the NV9000 User's Guide and its associated control panel user's guides, for information on panel functions.

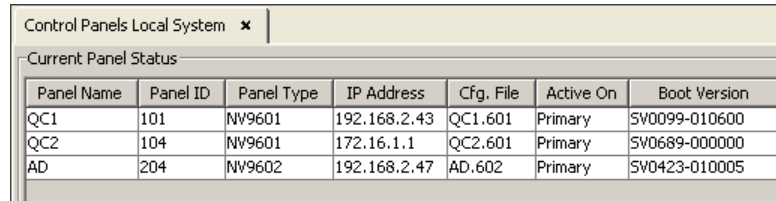
### Caveat about Reconfiguration

If you reconfigure a virtual panel while it is on-line, you might see button text that does not conform to the new configuration.

Therefore, after you reconfigure a virtual panel, open its context menu, choose 'Set Parameters' and click 'OK'. Doing this forces an update of the button text.

## IP Addresses

When you are viewing control panels in your system (using NV9000-SE Utilities), active virtual panels appear in the list. In this illustration, the panel named “QC2” with the panel ID 104 is a virtual panel:



Panel Name	Panel ID	Panel Type	IP Address	Cfg. File	Active On	Boot Version
QC1	101	NV9601	192.168.2.43	QC1.601	Primary	SV0099-010600
QC2	104	NV9601	172.16.1.1	QC2.601	Primary	SV0689-000000
AD	204	NV9602	192.168.2.47	AD.602	Primary	SV0423-010005

Note, however, that IP addresses for the *physical* panels are those assigned to the panel and vary. The IP addresses for *virtual* panels are, in most cases, those for your computers and vary if you have more than one computer on your router control network.

Virtual panels running directly on a primary system controller take the IP address of the primary system controller and that IP address does not vary.

## Pathnames

The pathname of the configuration file folder (which is in the NV9000 system controller, not on your PC) is

```
C:\NVision\envy\usersys\live\
```

in case you need to browse the configuration files.

## Legacy Configurations

A very old panel configuration might have no .legend file and will not work with a virtual panel. The remedy is to open the old configuration in NV9000-SE Utilities (version 4.2.0 or later) and re-save the configuration. After creating the new configuration and associated .legends file, the virtual panel should run properly with the new configuration.

- ▲ NV9000-SE Utilities requires that you must make at least some slight change to a configuration before you save it. (For example, uncheck an option and then re-check it. The ‘Save’ button will become enabled.)

## Copies of Configurations

NV9000-SE Utilities has a mechanism by which you can make copies of configurations, but neglects to copy the configuration’s associated .legends file. If you intend to make copies of a configuration, open every copy and save it. Here again, NV9000-SE Utilities requires that you must make at least some slight change to a configuration before you save it. (For example, uncheck an option and then re-check it. The ‘Save’ button will become enabled.)

## Upgrading Old Virtual Panels

If you install a new virtual panel, it will not work properly with the .INI file of an old virtual panel. There are 3 ways to solve this problem.

- Use the Windows ‘Add or Remove Programs’ command to remove the old virtual panel software entirely before installing the new software.

- Delete the .INI file from the old virtual software folder. The new virtual panel will initialize properly if there is no old .INI file.
- The default location of the .INI file is  
    C:\Program Files\NVISION\*panel*\<panel>.ini  
    where *panel* is NV9601V, NV9602V, as appropriate.
- If the new virtual panel appears minimized at first launch, drag a corner to resize its window. Then click anywhere in the black region to get the context menu. There, click 'Set Default Size'. Then click 'Set Font Size' in the context window and choose one of the font sizes listed.
- That will be sufficient to make the panel usable. You can either close the panel or continue with its setup at this point.





## Miranda Technical Support

For technical assistance, please contact the Miranda Technical Support center nearest you:

### Americas

Office hours: 9:00 a.m. – 9:00 p.m. (EST)  
Telephone: 1-800-224-7882  
Fax: +1 514 335 1614  
E-mail: support@miranda.com

### Asia

Office hours: 9:00 a.m. – 6:00 p.m. (GMT+8)  
Telephone: +852 2539 6987  
Fax: +852 2539 0804  
E-mail: asiatech@miranda.com

### Europe, Middle East, Africa, UK

Office hours: 9:00 a.m. – 6:00 p.m. (GMT)  
Telephone: +44 118 952 3444  
Fax: +44 118 952 3401  
E-mail: eurotech@miranda.com

### China

Office hours: 9:00 a.m. – 6:00 p.m. (GMT+8)  
Telephone: +86 10 5873 1814  
E-mail: asiatech@miranda.com

### France

Office hours: 9:00 a.m. – 5:00 p.m. (GMT+1)  
Telephone: +33 1 55 86 87 88  
Fax: +33 1 55 86 00 29  
E-mail: eurotech@miranda.com

### Malaysia

Telephone: +60 3 2247 1808

### EMERGENCY After Hours (Global)

Toll Free: 1-800-224-7882 (US and Canada)  
Telephone: +1 514 333 1772

## Corporate Head Office

Miranda  
3499 Douglas-B.-Floreni  
St-Laurent, Quebec H4S 2C6  
Canada  
Telephone: +1 514 333 1772  
Fax: +1 514 333 9828  
Web: www.grassvalley.com

