



# QuickStart Guide

## NV915 Router Control System and Accessories

### Product Summary

#### NV915

The NV915 Router Control System features include:

- Two Ethernet ports, one for routers and panels, and the other for configuration.
- Two USB ports, a COM port and a monitor port.
- Flash-based storage.
- Support for up to 32 NV96xx control panels.
- Support for up to 4 NVISION series routers.
- 1RU, 9" deep.

#### NV9000-SE Utilities

NV9000-SE Utilities (SE, for short) is the “next generation configuration tool” to be used with NV9000 routing control systems.

You can use it, connected to the NV915 control system, to create and upload configurations. You can use it, detached from the NV915, to create configuration files.

SE is designed to model, as closely as possible, the user’s tasks and facility structure. It leads the user through the process of configuring a router control system.

SE fits in the NV915 scheme like this:

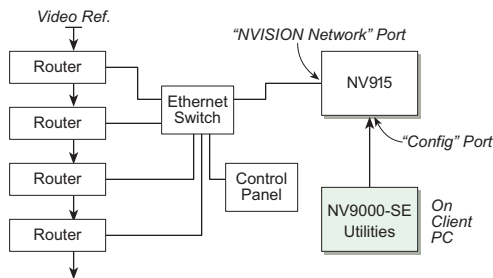


Figure 1. System Block Diagram

### Installation

To prepare the NV915 Router Control System for use, you must take these two steps:

- Install the NV915 hardware.
- Install the NV9000-SE Utilities software on a PC.  
To run the NV9000-SE Utilities, you will need a PC that supports Java 1.5 or later.

#### Installing the NV915

Perform the steps that follow to install the NV915.

Figure 1. Package Contents

NV915(s)



(front view)



(rear view)

Quick-Start Guide (this document)

AC power cord(s)



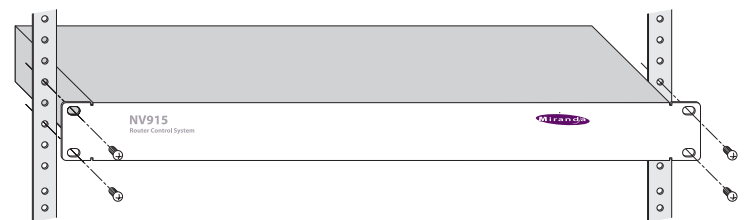
1 software and documentation disk



#### Rack Mounting

▲ Because the NV915 is small, you might not have enough space to reach behind it to make connections. In that case, leave this step until last.

Place the NV915 in the rack where you want it, aligning the screw holes with holes in your rack frame. Secure the router using your screws, nuts, and washers.



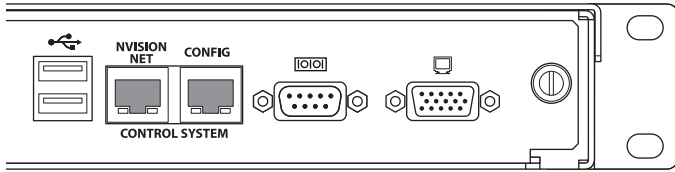
The mounting holes are spaced 1.25" (31mm) vertically and allow approximately 1/8" (3mm) of play horizontally.

#### Ethernet Cable

Connect an Ethernet cable (RJ-45) to the “NVISION Net” port. (See Figure 2.) Connect the other end of that cable to an Ethernet switch. Connect your routers and control panels to the Ethernet switch.

Connect an Ethernet cable to the “Config” port. Connect the other end of that cable to the Ethernet switch. Connect the

Ethernet port of the computer you intend to use for configuration to the switch.



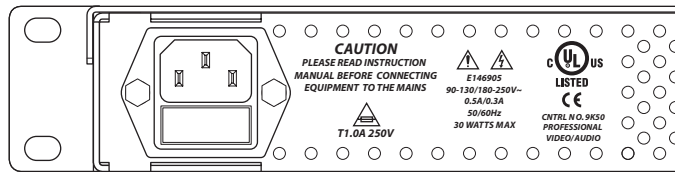
**Figure 2. Ethernet Connectors**

Alternatively, use a crossover cable between the Config port and your PC's Ethernet port.

You will have to add the "Config" port address to your PC's network addresses. You will have to add the NV915 control system to SE on your configuration PC(s). See *Configuration*.

### Power and Ground

The NV915 accepts "universal" power: 90–130/180–250VAC, 50/60Hz, at 0.5/0.3A, with a 30W maximum. Simply plug the AC cord into a main socket and into the power socket at the rear of the unit. (There is no on-off switch.) There is no special grounding requirement.



### Installing NV9000-SE Utilities

Insert the Software and Documentation CD (SB0033-xx) in your CD drive. The CD will auto-play. Click 'Configuration Software' in the main window. A new window appears. Then click 'Install NV9000-SE Utilities'. The installer will launch. When you see the first instruction screen, follow the simple instructions, clicking 'Next' as required. The entire installation takes less than a minute.

#### (Under Windows)

The default pathname of the SE executable is:

```
C:\Program Files\NVISION\NV9000-SE Utilities\
NV9000-SE Utilities.exe.
```

(You can specify a different pathname during installation.) If you elect to add the program to the Start menu, its "path" is

```
Start > Programs > NVISION > NV9000-SE Utilities >
NV9000-SE Utilities
```

The default pathname of configuration file storage is:

```
C:\Documents and Settings\current user\CtrlSysConfigs\
```

where "current user" is a user's login ID on the PC. Note: SE creates this folder at its first launch. It is not created at installation. SE will create one such folder for each user that logs in and runs SE.

That folder contains subfolders holding configuration data. The subfolder names are the configuration names. The folder 'ControlSysDB' is a prototype containing the default configuration and, in fact, when SE launches for the first time, it opens this configuration. This configuration is essentially "empty."

▲ We recommend that you create a desktop icon for the software.

## Configuration

These are the default IP addresses of the NV915 Ethernet ports:

- "Config" port — 192.168.97.1
- "Network" port — 192.168.2.1

(You can change these addresses.)

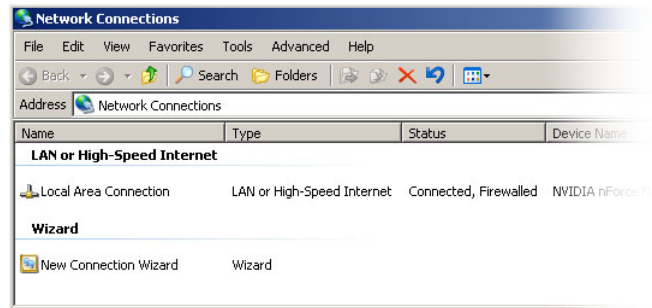
After you have installed the NV915 and NV9000-SE Utilities, two steps are required to get your system running.

- Place your PC on the NV915's Config network.
- Add the Config port to NV9000-SE Utilities.

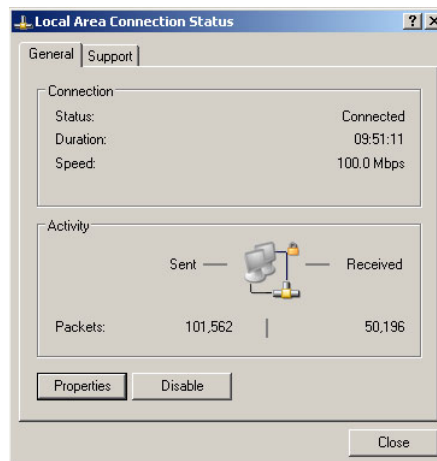
### Config Port

Follow these steps to add your PC to the Config network:

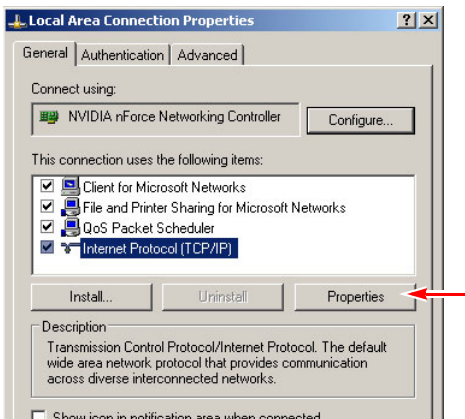
- 1 Launch 'Settings>Network Configuration' from you PC's Start menu. The following window appears:



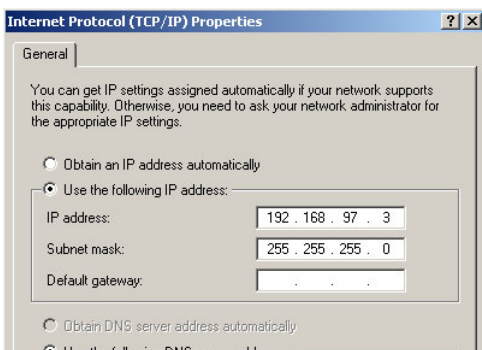
- 2 Double-click 'Local Area Connection'. Then, choose the General tab and click 'Properties'.



- 3 Select Internet Protocol (TCP/IP). Click 'Properties' again here:



- 4 Select 'Use the following IP address' and enter an IP address on the NV915's Config network. Use the default subnet mask.



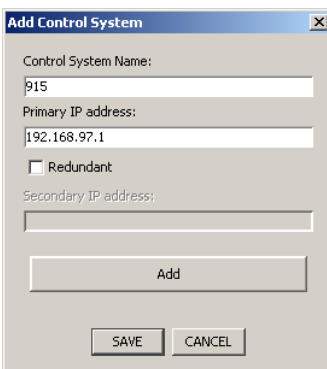
The default IP address of the NV915 on the Config network is 192.168.97.1. Therefore, choose 192.168.97.3 or a similar address that is not the same as the NV915's.

- 5 Click OK and it is done.

## Network Port

To make the NV915 known to NV9000-SE Utilities, follow these steps:

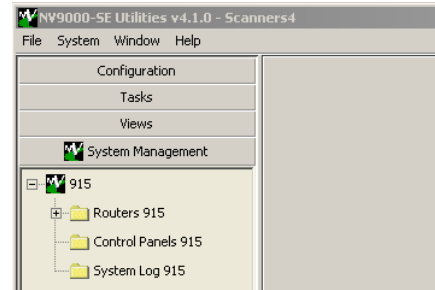
- 1 Launch NV9000-SE Utilities. Choose 'Add Control System' from the **System** menu.




Give your NV915 control system a name. Enter the NV915's config port address. Click 'Add' and then 'Save'.

- 2 The result is a named control system to which you can add routers and control panels.

Click the 'System Management' pane on the left side of the SE window to see the control system you created:



(It is from the System Management pane that you will upload configurations to the NV915 and start, stop, and restart the NV915.)

- ▲ If the NV915 icon remains red and does not turn green  then either you have not specified the network IP address correctly, the Ethernet connection (through the Ethernet switch) is faulty, or you have extra firewall protection installed and active. See *Notices*, following, for more detail.

- 3 Exit NV9000-SE Utilities.

Before you continue with NV9000-SE Utilities, read (or at least browse) all the available documentation.

- ▲ The CD contain an NV9000-SE Utilities User's Guide. NV9000-SE Utilities itself provides online help.

Beyond those basic steps, configuration of your NV915 system depends almost entirely on the characteristics of your system.

We recommend that you follow the order of entries in the Configuration pane when you are making a configuration.

That is, configure

- Network Address
- Routers
- Level Sets
- Devices
- Categories
- Control Panels
- etc.

in that order.

## Notices

### 1 Personal Security Programs

Some security programs, such as those available from Norton (or Symantec), will block the NV9000-SE Utilities from communicating with the NV915.

To use NV9000-SE Utilities to configure the NV915, you must disable the protection in your personal security software, at least temporarily.

You can create configurations NV9000-SE Utilities “offline” — without the presence of the NV915 — but to upload a configuration, or to start and stop the NV915, you must disable your personal firewall.

## More Information

Contact Miranda if you need information about NVISION router control systems or third-party automation systems.



### [www.miranda.com](http://www.miranda.com)

In the Americas, call toll-free +1-800-224-7882(9 am to 9 pm EST)

In Europe, the Middle East, African or the UK, (9 am to 6 pm, GMT) call +44 (0) 1491 820222

In France, call +33 1 55 86 87 88(9 am to 5 pm, GMT + 1)

In Asia, call +852-2539-6987(9 am to 5 pm, GMT + 8)

In China, call +86-10-5873-1814

Miranda Technologies, Inc.Tel: 514-333-1772

3499 Douglas B. FloreaniFax: 514-333-9828

Montreal, Quebec

Canada H4S 2C6

Find warranty, RMA notice, tech support, and other notices in the User's Guide. Specifications are subject to change without notice. © 2008 Miranda Technologies, Inc. All Rights Reserved. NVISION is a registered trademark of Miranda Technologies, Inc. All other trademarks are the property of their respective owners.