



Snell
Advanced
Media

Quick Start Guide

Quantel Rio

Information and Notices

Copyright and Disclaimer

Copyright protection claimed includes all forms and matters of copyrightable material and information now allowed by statutory or judicial law or hereinafter granted, including without limitation, material generated from the software programs which are displayed on the screen such as icons, screen display looks etc.

Information in this manual and software are subject to change without notice and does not represent a commitment on the part of SAM. The software described in this manual is furnished under a license agreement and can not be reproduced or copied in any manner without prior agreement with SAM, or their authorized agents.

Reproduction or disassembly of embedded computer programs or algorithms prohibited.

No part of this publication can be transmitted or reproduced in any form or by any means, electronic or mechanical, including photocopy, recording or any information storage and retrieval system, without permission being granted, in writing, by the publishers or their authorized agents.

SAM operates a policy of continuous improvement and development. SAM reserves the right to make changes and improvements to any of the products described in this document without prior notice.

Contact Details

Customer Support

For details of our Regional Customer Support Offices please visit the SAM web site and navigate to Support/Customer Support Contacts.

<https://s-a-m.com/support/247-support/>

Customers with a support contract should call their personalized number, which can be found in their contract, and be ready to provide their contract number and details.

Conventions Used

Text

- <Text> indicates a specific key press on the QWERTY keyboard.
- NN/nn indicates a value entered on a numeric keypad.
- Text/text** indicates either an application menu function or a Windows/SAM installation/system setting.

Symbols



See: Reference to items in other documents.



Notes: System, software and workflow points to consider and remember.



Tips: Useful hints and advice when undertaking tasks.

Getting Started

Prerequisites

To get started, the following items are required:

1. Shipping DVD with the license file and documentation.
2. USB Dongle.
3. Sentinel Dongle driver – download from:
<http://software.s-a-m.com/public/wbsr2.nsf/pubindex/QuantelRioUtilities?OpenDocument>
4. Quantel Rio software – download from:
<http://software.s-a-m.com/public/wbsr2.nsf/pubindex/QuantelRioLatest?OpenDocument>
5. PC workstation and fast disks as per the Quantel Rio specification.

VTR Serial Control

For RS422 VTR serial control the supplied RS422 interface must be installed.



The RS422 card does not need to be installed to use the Quantel Rio software.



Details of how to install the VTR serial controller are provided in the full Quantel Rio Installation Guide.

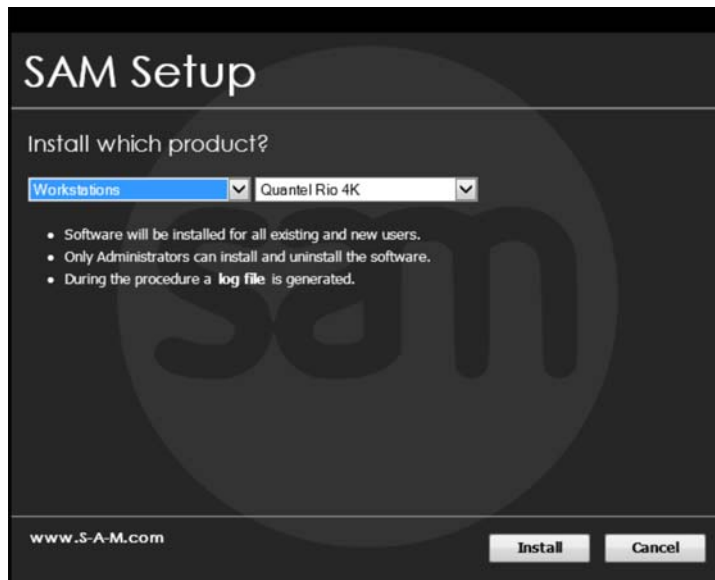
Installation

Install Quantel Rio Software

Log in with administrator privileges to install the Quantel Rio software.

To install Quantel Rio:

1. Double-click the installer setup file.
2. After the installation is complete, select **Quantel Rio** from the installer drop-down menu and then press **Install**.



3. Read the end user license agreement and then press **Accept**. The software is now installed.

Install License File

In Windows create the folder **C:\Data\Licenses** and place the supplied **Iservrc.lic** license file in this folder.

Install Sentinel Dongle Driver

1. Unzip the sentinel dongle driver file, run the setup and follow the instructions.
2. Plug in the supplied software protection dongle into a spare USB port.

Settings

Before starting the software for the first time, configure the following settings.

Audio and Video Settings

Audio and video disk partitions must be set up before you can adjust the audio and video settings.



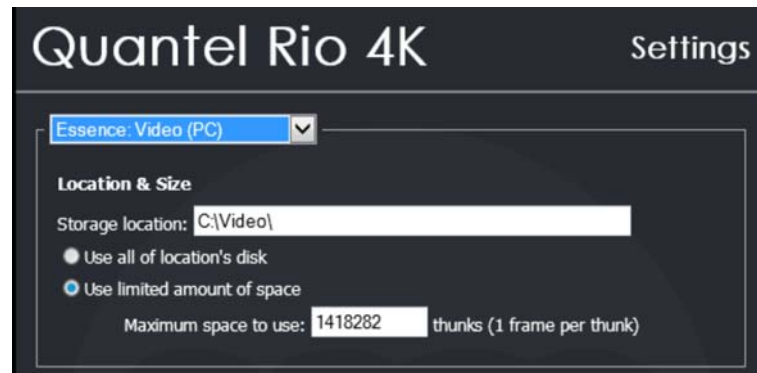
See the full Quantel Rio Installation Guide for details on setting up partitions.

Once the disk partitions are set up:

1. From the Windows start menu, press **SAM – Quantel Rio – Settings**.
2. Select **Essence: Audio** from the settings drop-down menu.



3. Select the **Use all space on location's disk** radio button and then press **Apply**.
4. Select **Essence: Video (PC)** from the settings drop-down menu.

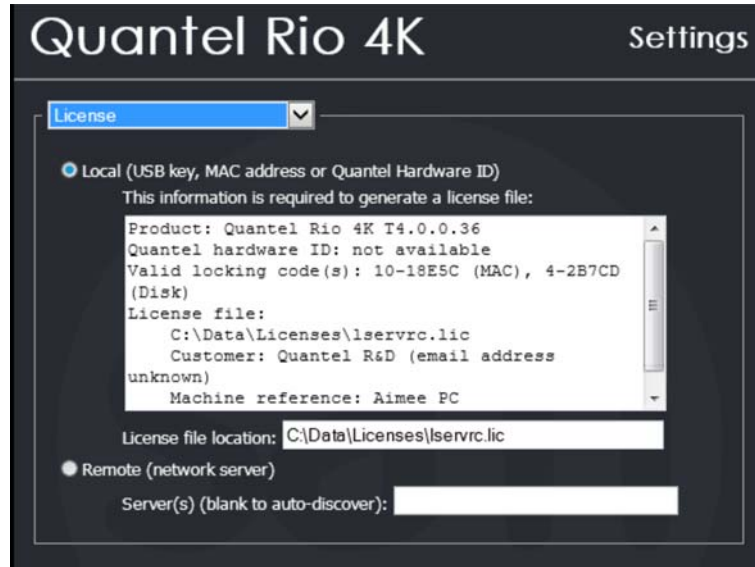


5. Ensure the storage location is set to **C:\DataVideo**.
6. Select the **Use all of location's disk** radio button and then press **Apply**.

License Settings

Ensure the license file path is correct by doing the following:

1. Select **License** from the settings drop-down menu.



2. Ensure the **Local** radio button is selected.
3. Check that the path displayed in the **License file location** field is correct.
4. Press **OK** to confirm and close the dialog box.

CUDA Environment Variable

To get the best performance of all the installed Tesla CUDA cards in a workstation, create a `CUDA_VISIBLE_DEVICES` environment variable. It is recommended that the display card is excluded from being used for any CUDA processing. This helps save space used on the display card, allowing it to be used correctly.

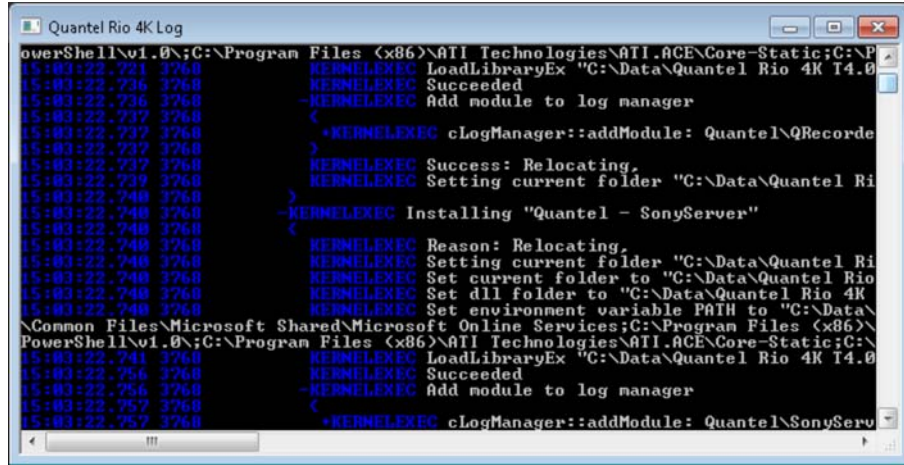


See the full Quantel Rio Installation Guide for information about creating an environment variable.

Launch Quantel Rio

To launch Quantel Rio, double-click on the desktop shortcut icon. The software boots and writes all the necessary registry settings.

To ensure Quantel Rio is running with the installed Teslas by checking the SAM log after the software has booted.



```
PowerShell\v1.0>C:\Program Files (x86)\ATI Technologies\ATI.ACE\Core-Static;C:\P
5:43:22 731 1768 KERNEXEC LoadLibraryEx "C:\Data\Quantel Rio 4K T4.0
5:43:22 736 1768 KERNEXEC Succeeded
5:43:22 737 1768 KERNEXEC Add module to log manager
5:43:22 737 1768 KERNEXEC cLogManager::addModule: Quantel\QRecorder
5:43:22 739 1768 KERNEXEC Success: Relocating,
5:43:22 739 1768 KERNEXEC Setting current folder "C:\Data\Quantel Ri
5:43:22 748 1768 KERNEXEC Installing "Quantel - SonyServer"
5:43:22 748 1768 KERNEXEC Reason: Relocating,
5:43:22 748 1768 KERNEXEC Setting current folder "C:\Data\Quantel Ri
5:43:22 748 1768 KERNEXEC Set current folder to "C:\Data\Quantel Rio
5:43:22 748 1768 KERNEXEC Set dll folder to "C:\Data\Quantel Rio 4K
5:43:22 748 1768 KERNEXEC Set environment variable PATH to "C:\Data\
5:43:22 748 1768 KERNEXEC
5:43:22 756 1768 KERNEXEC LoadLibraryEx "C:\Data\Quantel Rio 4K T4.0
5:43:22 757 1768 KERNEXEC Succeeded
5:43:22 757 1768 KERNEXEC Add module to log manager
5:43:22 757 1768 KERNEXEC cLogManager::addModule: Quantel\SonyServ
```

The beginning of the log displays the CUDA installed devices.



The log does not display the card used for the display output.