



Snell
Advanced
Media

Quick Start Guide

Rio Assist

Information and Notices

Copyright and Disclaimer

Copyright protection claimed includes all forms and matters of copyrightable material and information now allowed by statutory or judicial law or hereinafter granted, including without limitation, material generated from the software programs which are displayed on the screen such as icons, screen display looks etc.

Information in this manual and software are subject to change without notice and does not represent a commitment on the part of SAM. The software described in this manual is furnished under a license agreement and can not be reproduced or copied in any manner without prior agreement with SAM, or their authorized agents.

Reproduction or disassembly of embedded computer programs or algorithms prohibited.

No part of this publication can be transmitted or reproduced in any form or by any means, electronic or mechanical, including photocopy, recording or any information storage and retrieval system, without permission being granted, in writing, by the publishers or their authorized agents.

SAM operates a policy of continuous improvement and development. SAM reserves the right to make changes and improvements to any of the products described in this document without prior notice.

Contact Details

Customer Support

For details of our Regional Customer Support Offices please visit the SAM web site and navigate to Support/Customer Support Contacts.

<https://s-a-m.com/support/247-support/>

Customers with a support contract should call their personalized number, which can be found in their contract, and be ready to provide their contract number and details.

Conventions Used

Text

- <Text> indicates a specific key press on the QWERTY keyboard.
- NN/nn indicates a value entered on a numeric keypad.
- Text/text** indicates either an application menu function or a Windows/SAM installation/system setting.

Symbols



See: Reference to items in other documents.



Notes: System, software and workflow points to consider and remember.



Tips: Useful hints and advice when undertaking tasks.

Getting Started

Prerequisites

To get started, the following items are required:

1. Shipping DVD with the license file and documentation.
2. USB Dongle.
3. Sentinel Dongle driver – download from:
<http://software.s-a-m.com/public/wbsr2.nsf/pubindex/RioAssistUtilities?OpenDocument>
4. Rio Assist software – download from:
<http://software.s-a-m.com/public/wbsr2.nsf/pubindex/RioAssistLatest?OpenDocument>
5. PC workstation and fast disks as per the Rio Assist specification.

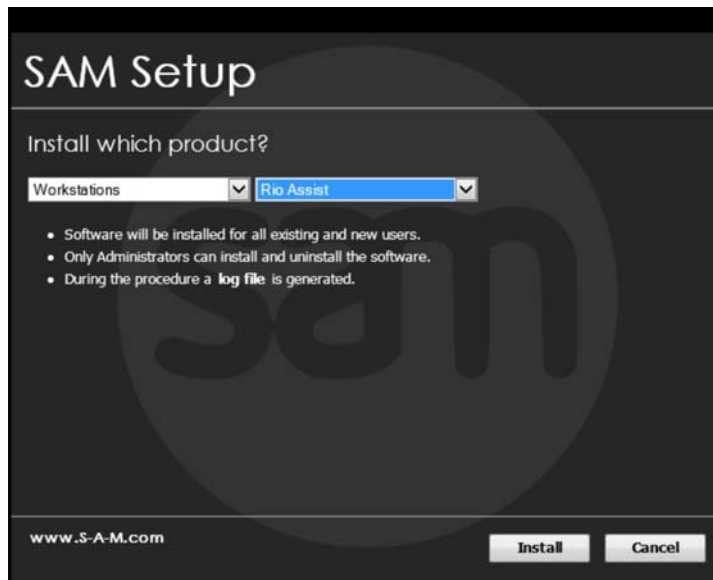
Installation

Install Rio Assist Software

Log in with administrator privileges to install the Rio Assist software.

To install Rio Assist:

1. Double-click the installer setup file.
2. After the installation is complete, select **Rio Assist** from the installer drop-down menu and then press **Install**.



3. Read the end user license agreement and then press **Accept**. The software is now installed.

Install License File

In Windows create the folder **C:\Data\Licenses** and place the supplied **Iservrc.lic** license file in this folder.

Install Sentinel Dongle Driver

1. Unzip the sentinel dongle driver file, run the setup and follow the instructions.
2. Plug in the supplied software protection dongle into a spare USB port.

Settings

Before starting the software for the first time, configure the following settings.

Audio and Video Settings

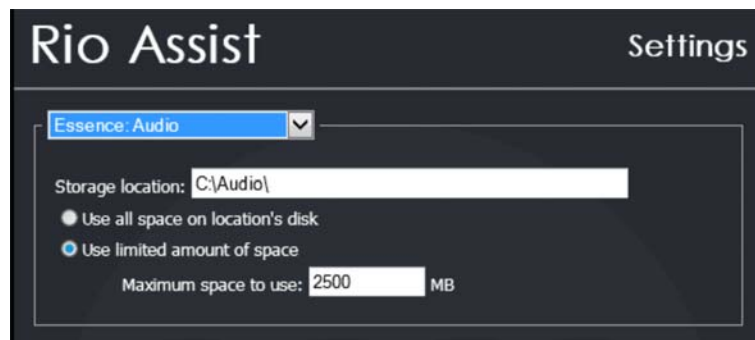
Audio and video disk partitions must be set up before you can adjust the audio and video settings.



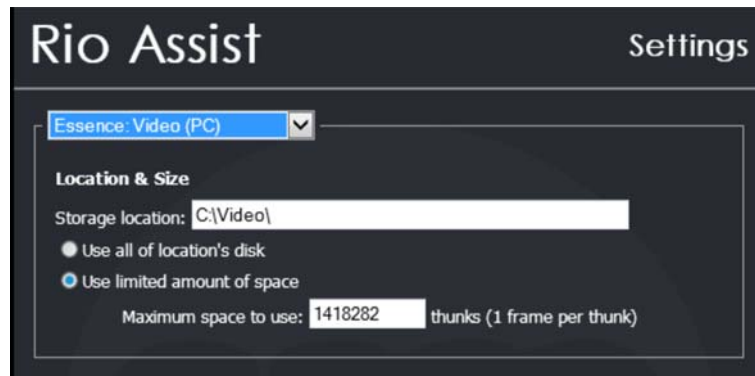
See the full Rio Assist Installation Guide for details on setting up partitions.

Once the disk partitions are set up:

1. From the Windows start menu, press **SAM – Rio Assist – Settings**.
2. Select **Essence: Audio** from the settings drop-down menu.



3. Select the **Use all space on location's disk** radio button and then press **Apply**.
4. Select **Essence: Video (PC)** from the settings drop-down menu.

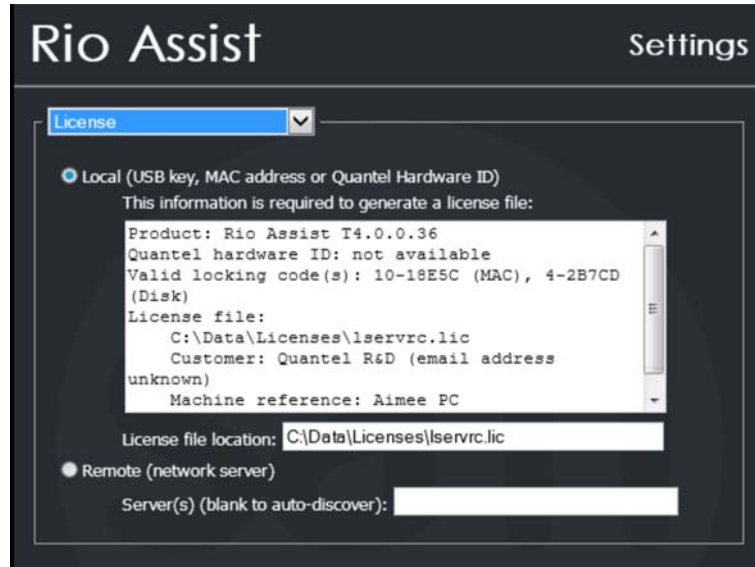


5. Ensure the storage location is set to **C:\DataVideo**.
6. Select the **Use all of location's disk** radio button and then press **Apply**.

License Settings

Ensure the license file path is correct by doing the following:

1. Select **License** from the settings drop-down menu.



2. Ensure the **Local** radio button is selected.
3. Check that the path displayed in the **License file location** field is correct.
4. Press **OK** to confirm and close the dialog box.

CUDA Environment Variable

To get the best performance of all the installed Tesla CUDA cards in a workstation, create a `CUDA_VISIBLE_DEVICES` environment variable. It is recommended that the display card is excluded from being used for any CUDA processing. This helps save space used on the display card, allowing it to be used correctly.

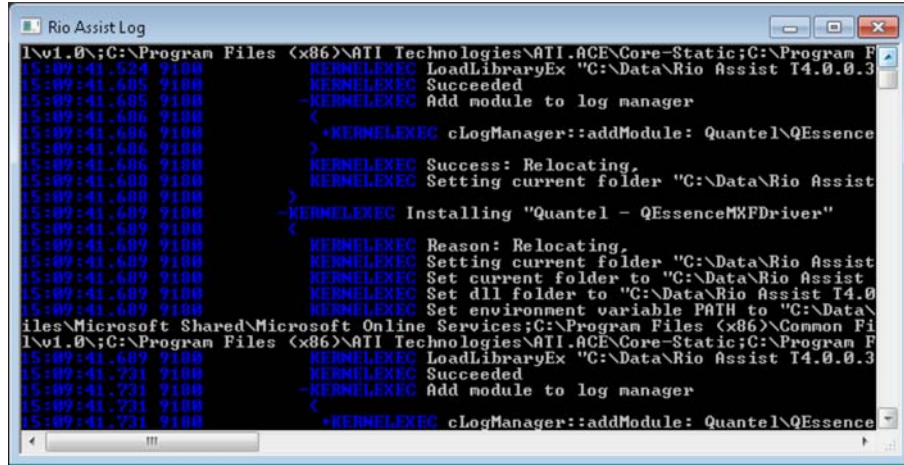


See the full Rio Assist Installation Guide for information about creating an environment variable.

Launch Rio Assist

To launch Rio Assist, double-click on the desktop shortcut icon. The software boots and writes all the necessary registry settings.

To ensure Rio Assist is running with the installed Teslas by checking the SAM log after the software has booted.



```
Rio Assist Log
I:\v1.0\C:\Program Files (x86)\ATI Technologies\ATI.ACE\Core-Static;C:\Program F
5:09:41.724 7100 KERNLEXEC LoadLibraryEx "C:\Data\Rio Assist T4.0.0.3
5:09:41.605 7100 KERNLEXEC Succeeded
5:09:41.606 7100 KERNLEXEC Add module to log manager
5:09:41.606 7100 KERNLEXEC cLogManager::addModule: Quantel\QEssence
5:09:41.606 7100 KERNLEXEC Success: Relocating,
5:09:41.608 7100 KERNLEXEC Setting current folder "C:\Data\Rio Assist
5:09:41.608 7100 KERNLEXEC Installing "Quantel - QEssenceMKFDriver"
5:09:41.609 7100 KERNLEXEC Reason: Relocating,
5:09:41.609 7100 KERNLEXEC Setting current folder "C:\Data\Rio Assist
5:09:41.609 7100 KERNLEXEC Set current folder to "C:\Data\Rio Assist
5:09:41.609 7100 KERNLEXEC Set dll folder to "C:\Data\Rio Assist T4.0
5:09:41.609 7100 KERNLEXEC Set environment variable PATH to "C:\Data\
files\Microsoft Shared\Microsoft Online Services;C:\Program Files (x86)\Common Fi
I:\v1.0\C:\Program Files (x86)\ATI Technologies\ATI.ACE\Core-Static;C:\Program F
5:09:41.609 7100 KERNLEXEC LoadLibraryEx "C:\Data\Rio Assist T4.0.0.3
5:09:41.721 7100 KERNLEXEC Succeeded
5:09:41.721 7100 KERNLEXEC Add module to log manager
5:09:41.721 7100 KERNLEXEC cLogManager::addModule: Quantel\QEssence
```

The beginning of the log displays the CUDA installed devices.



The log does not display the card used for the display output.