

Product Revision/Upgrade Instructions

Product Type	HD2200 and HD6200 when Down-converter option is fitted		
Revision Type	Installation of OPI card		
Version Change	From	N/A	To N/A
Date	260701		
Issued By	Steve Hall		
Installed By	Company		
	Name		Date
Reason			
Unit Serial Number			
Customer Name			
Customer Address			
Telephone Number		Fax Number	

Please complete customer details above so that we can ensure all customers can be given prior notification of future upgrades and product status.

Warranty Terms

1. *Snell & Wilcox warrants to the purchaser that new equipment will be free from defects in material and workmanship for one year from the date of shipment by Snell & Wilcox, subject to the exclusions set out below. Snell & Wilcox exclusive obligation (and purchasers only remedy) for any defect shall be to repair or replace, at Snell & Wilcox option, at no charge except for shipping charges, any equipment or parts returned prepaid to an approved Snell & Wilcox service center.*
2. *Within the warranty period, purchaser shall notify Snell & Wilcox of any defect in material or workmanship. If a part is defective, Snell & Wilcox may forward a new part to purchaser, invoice for the part and credit invoice upon receipt of the defective part returned, freight prepaid. Snell & Wilcox reserve the right to inspect or repair equipment on purchaser's premises.*
3. *Snell & Wilcox specifically excludes the following from warranty coverage, and assumes no responsibility for repair or replacement thereto:*
 - a) *Equipment which has been modified, repaired or altered by procedures other than those published or authorized in writing by Snell & Wilcox, which has been subjected to misuse, misapplication, improper maintenance, negligence, acts beyond the purchasers control (including failure of or excessive electrical power or failure of environmental control equipment);*
 - b) *used equipment;*
 - c) *fuses, lamps and batteries;*
 - d) *equipment which has had its serial number altered, defaced or removed.*
4. *No repair or replacement shall extend the warranty period.*
5. *NOTE: Please be certain that you have received appropriate upgrade training prior to performing upgrades; failure to complete this training will invalidate the warranty.*

Equipment Required

- Anti-static protection
- A medium sized Pozi-drive screwdriver
- Soldering iron

Unit Identification

The type of installation required for the OPI card option is governed by the age of the unit to which it is being fitted and should be identified by one of two order codes.

Order code	Serial Number	Details
3608300	S4107001 onwards	For units shipped on or after July 01 (Carry out section 1 only)
3608301	up to S4106999	For units shipped up to end June 01 (Carry out section 2 only)

Static Damage Precautions (ESD)

All work must be undertaken in a static safe environment. A suitable static safe wrist or shoe strap must be worn at all times while handling the PCB assemblies. Any PCB's removed from the unit must be placed on a suitable static safe work surface.

Notes

1. Incorrect use of, or complete failure to use the appropriate anti-static protection may lead to immediate failure of the equipment, or permanent damage that may reduce the life of the equipment. In such cases, the Warranty will be rendered void.
2. The use of inappropriate chip extraction tools may lead to permanent damage to chip sockets, which may lead to equipment failure. In such cases, the Warranty will be rendered void.

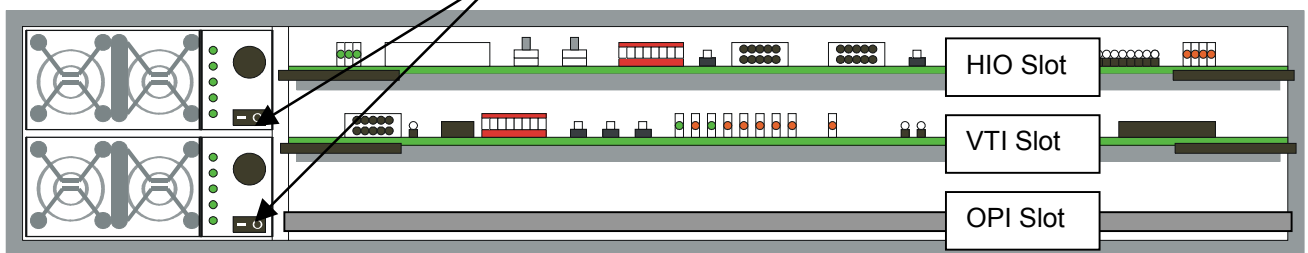
Procedure

Read these instructions thoroughly before starting.

1. Open the front door of the unit _____



2. Power down the unit by switching off the mains switch on both PSUs.



3. Disconnect the unit from the mains power supply by removing the power cord at the rear of the unit.

SECTION 1 (For units shipped on or after July 01 serial number S4107001 onwards)

1. Insert the OPI card into the bottom slot within the card cage. Ensure the card is fully mated by pushing the ejector handles fully home.
2. Power up the unit and close the front door.

SECTION 2 (For units shipped up to end June 01 ONLY up to serial number S4106999)

1. Carefully slide the HIO card part way out of its slot. Levering the Ejector handles, gently work the card out until the coax connectors in the right hand corner become exposed.
2. Disconnect the snap on connectors noting the board ref position from where they came (required for re-assembly).
3. Hold the cables towards the top of the box. The card should now be free and should be completely removed from the box.

Modification is required on the HIO card to enable internal communications between itself and the OPI card.

4. On the HIO card remove the 9 off screws holding on the PCB screen plate observing standard ESD precautions.
5. Perform Mod level 3 PCB modifications detailed in Appendix 1.
6. Once the modification is complete, reassemble the screen plate and cross out the 3 on the Mod Strike label to indicate the new hardware status of card
7. With the unit powered down and the HIO card removed.
8. Locate the existing daughter card, labelled SAADA HD6EXF1Y on the HIO card. This is held to the HIO card by the mating force of the connectors and should just pull away with careful levering.
9. Insert the replacement daughter card.
10. Reinsert the HIO card ensuring the on board coax connectors are fully home and are in their correct positions.

IMPORTANT NOTE

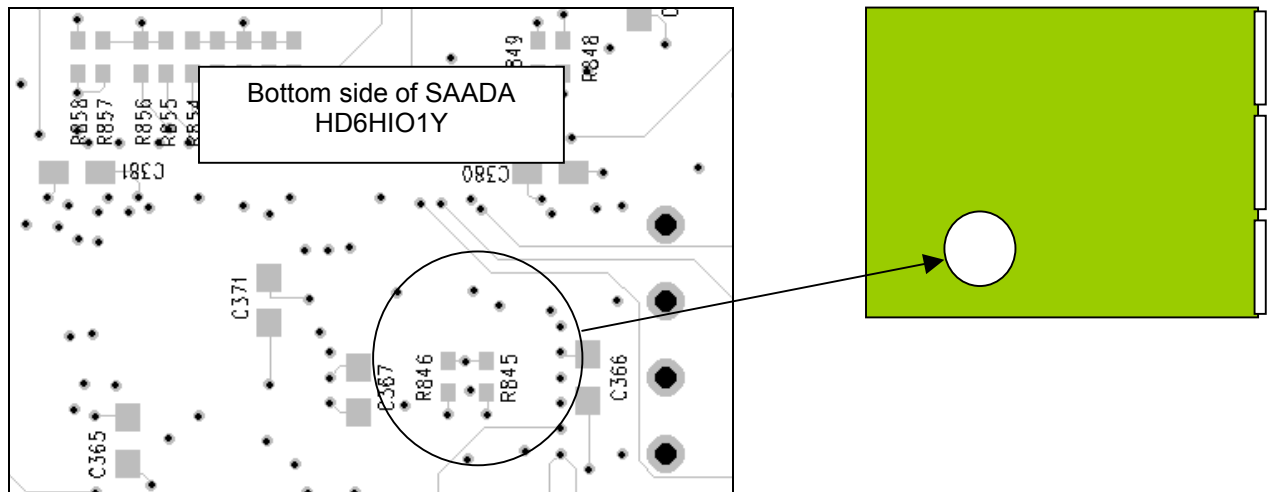
For units pre April 01, care should be taken with the DIN coax connector on the back plane that mates with the OPI card. In early units the housing of this connector has been pulled away from the BPL after repeated insertion and de-insertion. This leaves the connector pins still soldered into the BPL and exposed. If this happens it is very difficult to reposition the housing back over these pins. Units shipped after April 01 now have this connector glued on to the BPL or held in position with a nut and bolt. We strongly recommend that the connector be glued in place with suitable PCB component glue e.g. (Loctite 4105) prior to inserting the card.

11. Insert the OPI card into the bottom slot within the card cage. Ensure the card is fully mated by pushing the ejector handles fully home.
12. Power up the unit and close the front door.
13. Wait until the system is up and running and then Reinstall factory default settings:
 - * Press Memory on front panel.
 - * Press Factory.
 - * Press Confirm.
 - * Press Home.

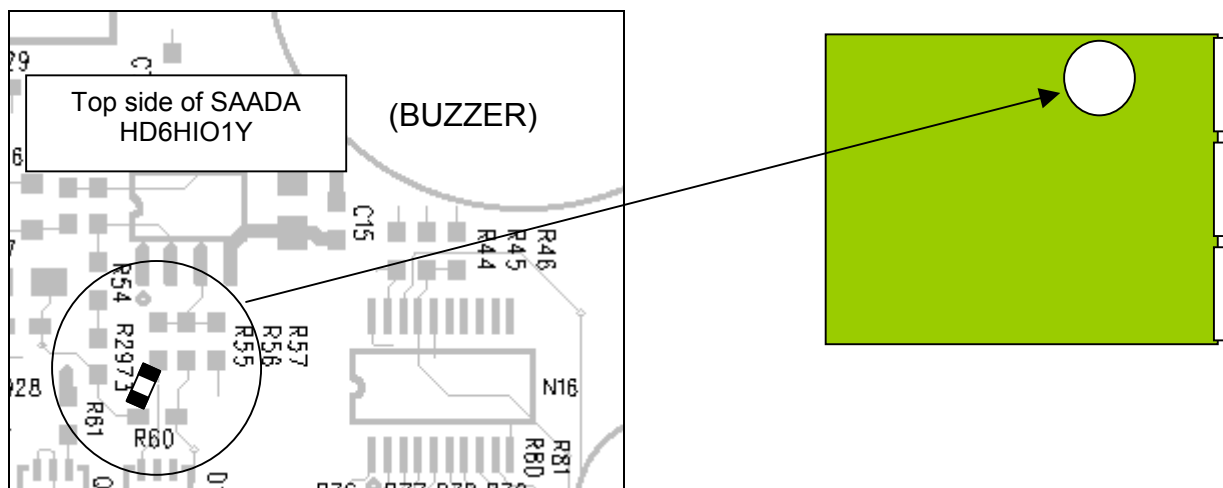
Appendix 1 Hardware Modification Instructions

Assembly	SAADA HD6HIO1Y	MOD	3 of 3
PCB	RMPDA HD6HIO1Y		
Date	07/03/01		
Production Engineer	Steve Hall		
Designer	James Walker		
ECR Nos.			

1. Access underside of assembly SAADA HD6HIO1Y
2. PLI Check Only.
Note: Boards ML3 & onwards have changes corrected by a PLI update.
3. R846 is Not fitted.
4. R845 is now 3k3 0603 (E6 3K3-0603) resistor



5. Solder a 75ohm 0603 (E6 75-0603) resistor between R55 and R60, shown below.



END