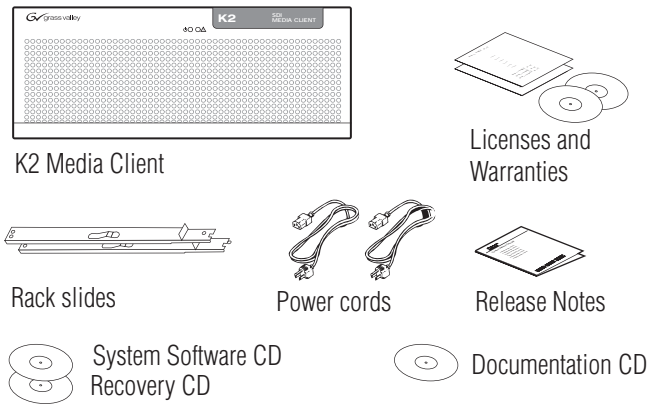


# K2 Media Client Quick Start Guide

For SD-00 models

071-8453-03 September 4, 2007

Before you begin, unpack the following items...



...and locate the documentation you need.

## Documentation path to install K2 Media Clients with internal storage



## Documentation path to install K2 Media Clients with (shared) K2 Storage System



\*Storage Release Notes and Cabling Guide packed with RAID primary chassis

## 1. Make cable connections and, if necessary, configure network

### Quick Start networking options

**Use default settings** – DHCP is enabled and the chassis serial number is the hostname. If supported by your network, you can use these defaults.

**Configure network settings** – If necessary, power up the K2 Media Client and do the following:

- Access the Windows logon dialog. Use a locally connected keyboard, mouse, and monitor. If not locally connected, use Windows Remote Desktop Connection with default settings as above.
- Logon with the default Windows administrator account:  
Username: administrator  
Password: adminK2
- In Network Connections, for internal storage models configure **Control Connection #1**. For shared storage models, configure **Control Team**.

Connect video inputs and outputs (supports embedded audio).

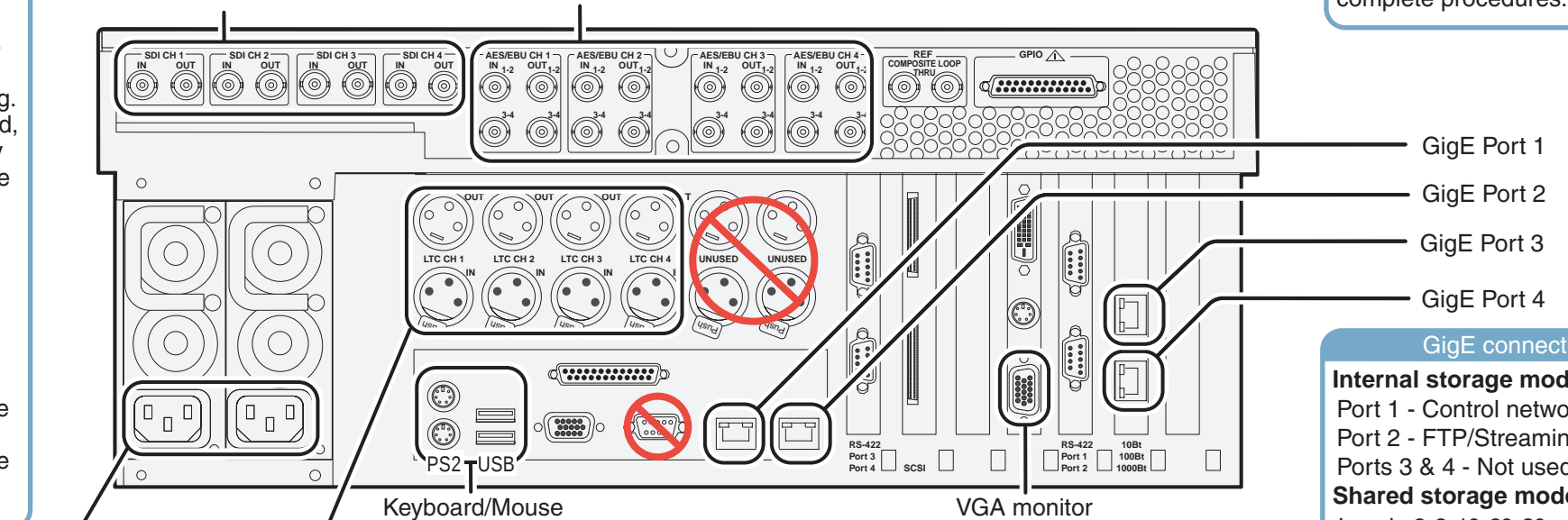
Connect audio inputs and outputs, if using AES/EBU audio.

### Bi-directional channels

Each channel (CH1, CH2, CH3, CH4) can be both an input (record channel) and an output (play channel). You can connect video/audio IN and OUT to each channel, as appropriate for your intended use.

### Shared storage

You must add shared storage models to a K2 Storage System. Refer to the *K2 Storage System Instruction Manual* and the *K2 Media Client System Guide* for complete procedures.



Connect power cords.

If using LTC, connect inputs and outputs as needed per channel.

Refer to *K2 Media Client System Guide* for RS-422 connections.

Connect other cables as needed. Refer to the *K2 Media Client System Guide* for complete cabling and network instructions.

### GigE connections

#### Internal storage models:

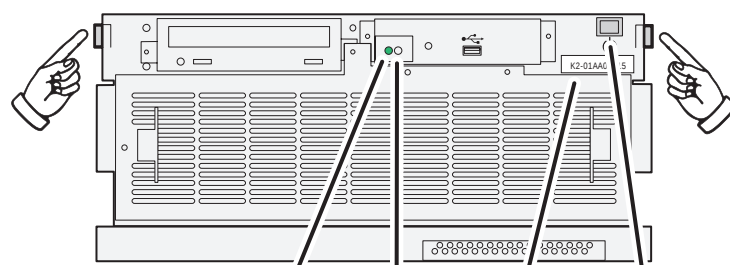
- Port 1 - Control network
- Port 2 - FTP/Streaming
- Ports 3 & 4 - Not used

#### Shared storage models:

- Levels 2, 3, 10, 20, 30 non-redundant:
  - Port 1 - Control network
  - Port 2 - Media (iSCSI) network
- Levels 2, 3, 10, 20, 30 redundant:
  - Port 1 & 3 - Control network
  - Port 2 - Media (iSCSI) network A
  - Port 4 - Media (iSCSI) network B

## 2. Power on

- 1 Press both bezel-release buttons and flip down front bezel.



- 2 Identify the following: Power LED, Service LED, Serial number, Standby switch

- 3 Press the standby switch to power on. At first startup, End User License Agreements appear on the screen. Accept the agreements to continue.

### Normal startup sequence

Power LED goes on and stays on. Service LED stays off. Startup processes complete in approximately two minutes and the K2 Media Client is ready for remote connection and operation.

Note: Add shared storage models to a K2 Storage System before proceeding.

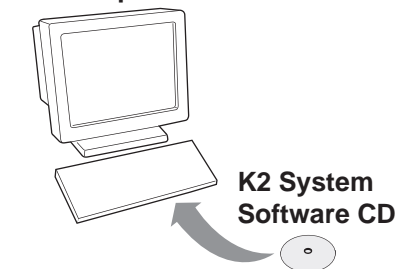
## 3. Install control point software

Note: You can skip ahead if you are:

- Using the Grass Valley control point PC. Skip to step 4.
- Accessing the K2 Media Client locally only. Skip to step 5.

- 1 Choose a network-connected PC as your control point.

### Control point PC



- 2 Insert CD, open the *Control Point* folder and run *setup.exe*.
- 3 Follow on-screen instructions, clicking **Next**, **Install**, and **Finish**.

### PC System requirements

Microsoft Windows XP Professional, Service Pack 2 (U.S. version)  
Pentium 4 or higher class processor, 2 GHz or greater  
Minimum 512 MB RAM, 1 GB recommended  
400 MB hard disk space  
Graphics acceleration with at least 128 MB memory  
Microsoft .NET Framework 1.1 (available on K2 System Software CD)  
MS XML 4, Service Pack 2 (available on K2 System Software CD)

## 4. Make remote connection

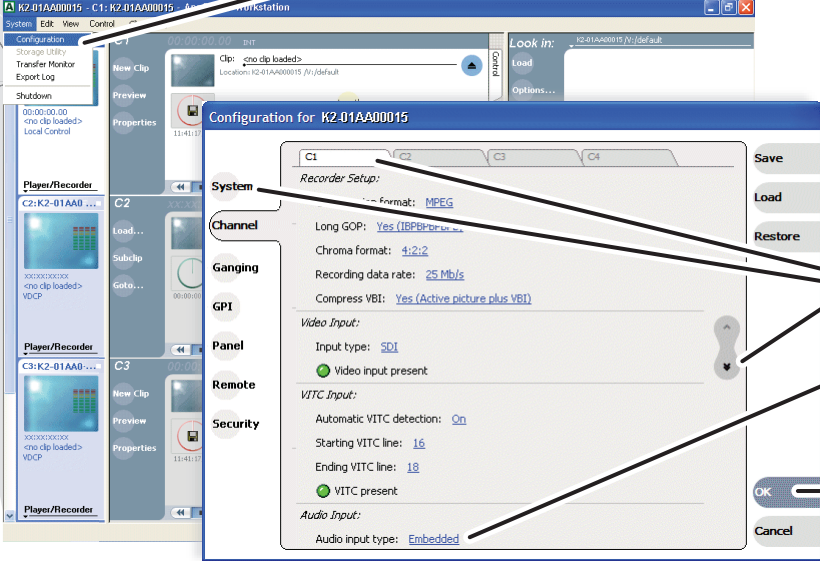
### Control point PC

- 1 Open the AppCenter shortcut.
- 2 Logon to AppCenter with the default K2 administrator account.
  - Username: K2admin
  - Password: K2admin
- 3 Click **Add**.
- 4 Enter the K2 Media Client hostname or IP address. The default hostname is the chassis serial number (e.g. K2-01AA00015). Refer to step 2. *Power on* to locate the serial number.
- 5 Click **OK**.
- 6 Select the channels to control from this control point PC.
- 7 Click **OK** and **OK** to save settings and close.

Continue with Quick Start procedures on the reverse side.

## 5. Configure channels

- 1 Open AppCenter and logon with the K2 administrator account (K2admin/K2admin). If a licensing message appears, refer to *K2 Media Client Release Notes*.
- 2 Click **System | Configuration**.



**Bi-directional channels**  
Each channel tab has input (record) channel settings as well as output (play) channel settings. Configure the settings that apply to your intended use (play and/or record) of the channel.

- 3 Click tabs, buttons, and scroll bar to locate settings.
- 4 Select from drop-down lists to make settings.
- 5 Click **OK** and **Yes** to save settings..

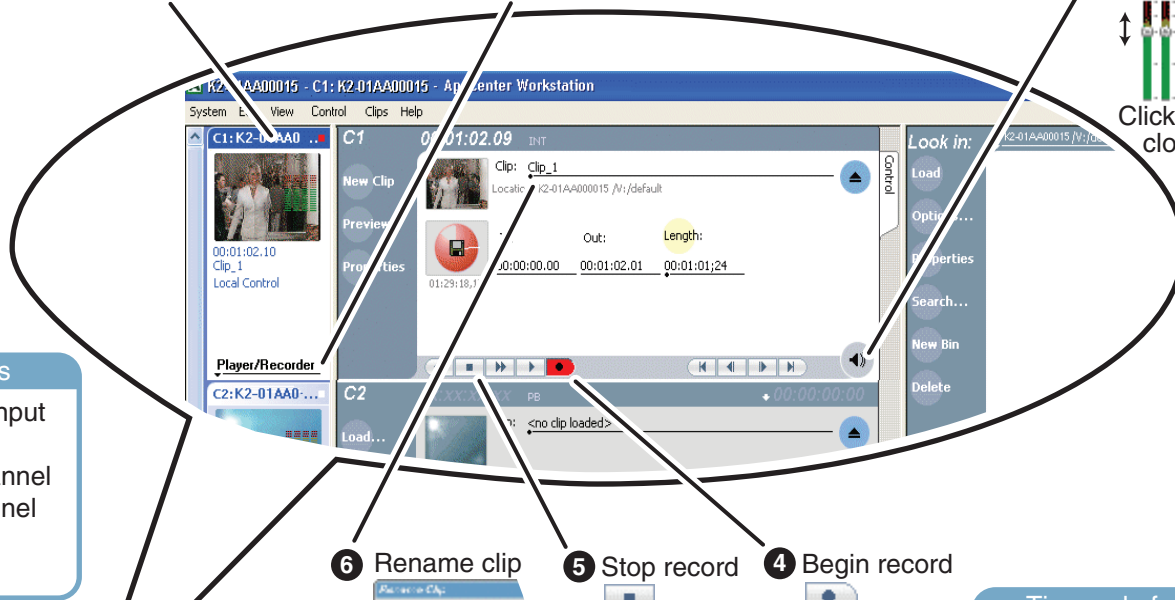
Find commonly modified settings...

And configure as follows:

- System** → Video Standard: Select **NTSC** or **PAL**. Restart to put change into effect.
- Channel** → C n → Audio Input: Select **AES/EBU** or **Embedded**.
- Channel** → C n → Number of audio inputs: Select **2, 4**, etc.
- Channel** → C n → Video output timing: Set **Line** and **Sample** offset.

## 6. Record a clip

- 1 Select a channel
- 2 Select Player/Recorder
- 3 Adjust audio



**Bi-directional channels**  
A channel becomes an input channel when you begin recording. The same channel becomes an output channel when you load a clip for payout.

- 4 Begin record
- 5 Stop record
- 6 Rename clip

**Timecode for Record**  
On the AppCenter menu, click **Control | Options**. On the Options dialog box click **Timecode** and select **VITC**, **LTC**, or **Internal** timecode for recording and display.

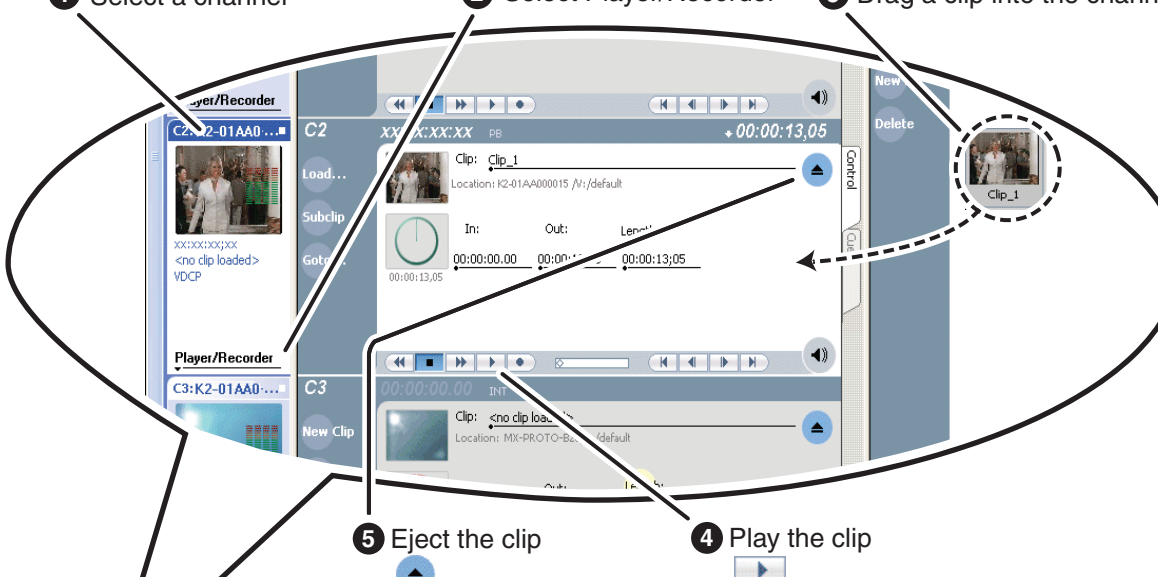
Click **⏪** again to close the audio control

Use keyboard or on-screen keypad.

Refer to the AppCenter Help menu for complete operating instructions. Refer to step 8. For more information.

## 7. Play a clip

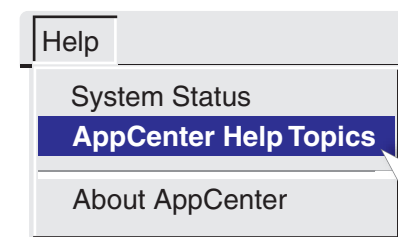
- 1 Select a channel
- 2 Select Player/Recorder
- 3 Drag a clip into the channel
- 4 Play the clip
- 5 Eject the clip



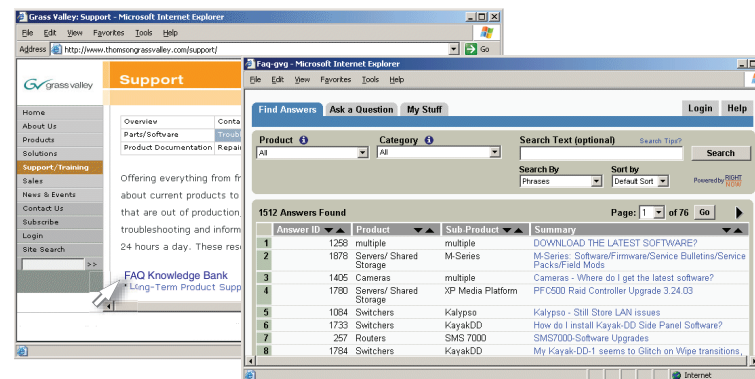
Refer to the AppCenter Help menu for complete operating instructions. Refer to step 8. For more information.

## 8. For more information...

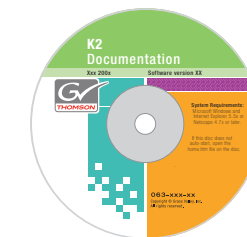
In AppCenter, click **Help | AppCenter Help Topics** and read the complete documentation for operating and configuring K2 Media Client channels.



Go to <http://www.thomsongrassvalley.com/support> and search the FAQ Knowledge Bank.



Find the complete documentation set for K2 products on the Documentation CD:



- User Guide
- System Guide
- Service Manual
- Storage System Manual
- RAID Instruction Manuals



Use the following information to contact product support by phone during business hours. Afterhours phone support is available for warranty and contract customers.

International (France)	+800 80 80 20 20	Italy	+39 02 24 13 16 01
International (United States, Canada)	+33 1 48 25 20 20	Belarus, Russia, Ukraine, Tadjikistan, Uzbekistan	+39 06 87 20 35 42
Hong Kong, Taiwan	+800 547 8949	India Subcontinent	+7 095 258 09 20
Korea, Macau	+1 530 478 4148	Germany, Austria, E. Europe	+33 (0) 2 334 90 30
Australia, New Zealand	+852 2531 3058	Netherlands	+91 11 515 282 502
Belgium	+61 1300 721 495	Northern Europe	+91 11 515 282 504
Japan	+55 11 5509 3440	Spain	+33 1 48 25 20 20
Malaysia	+861 066 0159 450	UK, Ireland, Israel	+31 (0) 35 62 38 421
Middle East	+32 (0) 2 334 90 30		
	+81 3 5484 6868		
	+603 7805 3884		
	+971 4 299 64 40		

