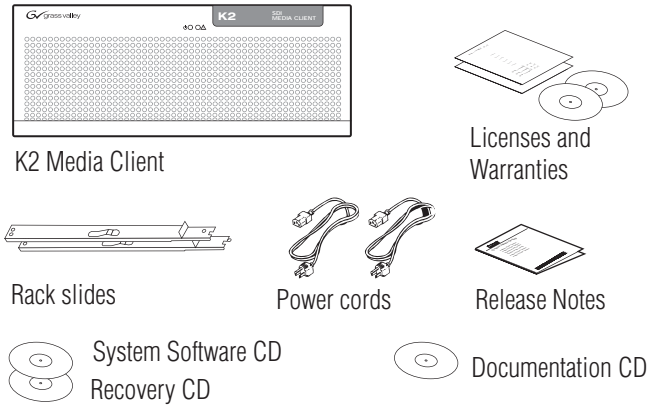


K2 Media Client Quick Start Guide

For SDA-00 models
071-8576-01 September 4, 2007

Before you begin, unpack the following items...

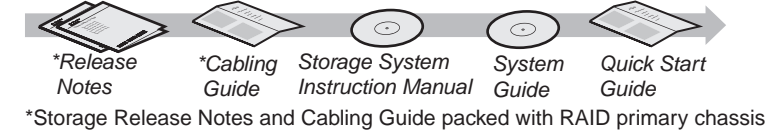


...and locate the documentation you need.

Documentation path to install K2 Media Clients with internal storage



Documentation path to install K2 Media Clients with (shared) K2 Storage System



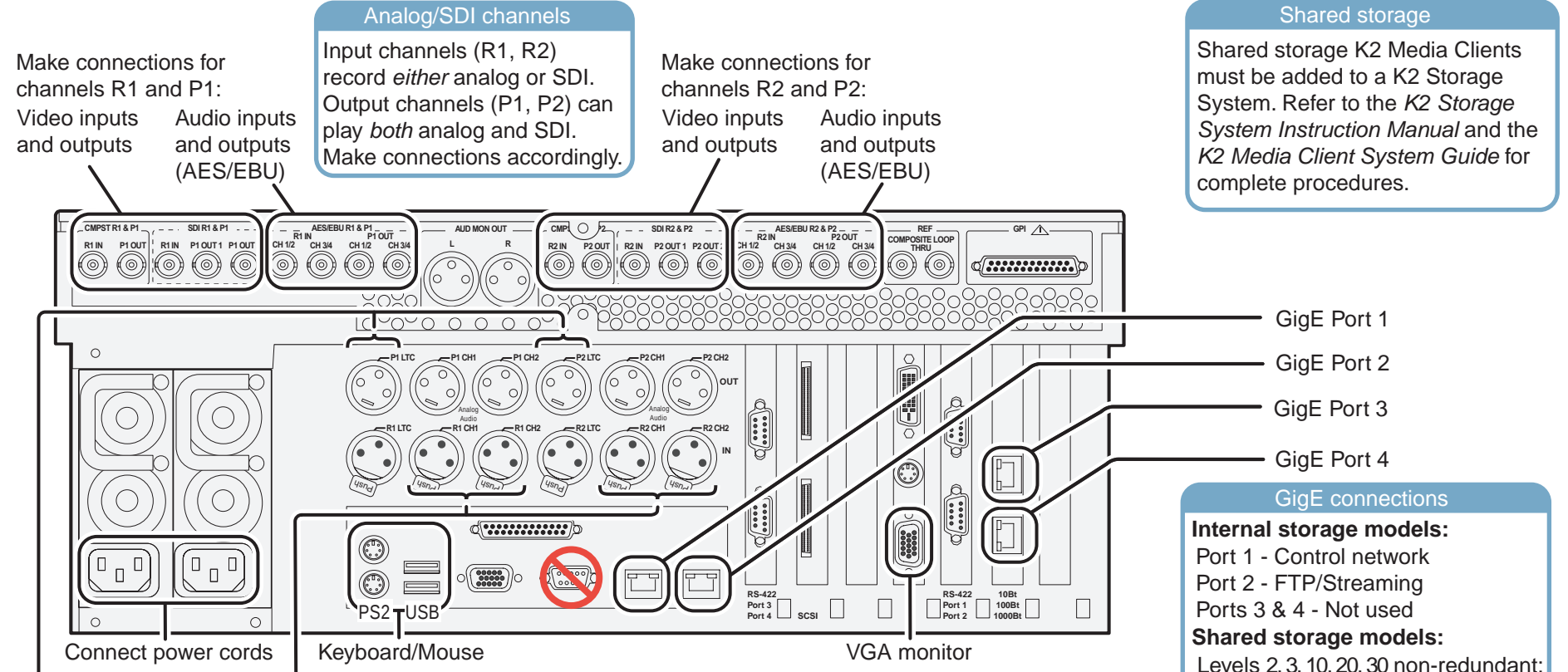
1. Make cable connections and, if necessary, configure network

Quick Start networking options

Use default settings – DHCP is enabled and the chassis serial number is the hostname. If supported by your network, you can use these defaults.

Configure network settings – If necessary, power up the K2 Media Client and do the following:

- Access the Windows logon dialog. Use a locally connected keyboard, mouse, and monitor. If not locally connected, use Windows Remote Desktop Connection with default settings as above.
- Logon with the default Windows administrator account:
Username: administrator
Password: adminK2
- In Network Connections, for internal storage models configure **Control Connection #1**. For shared storage models, configure **Control Team**.



If using LTC, connect inputs and outputs as needed per channel

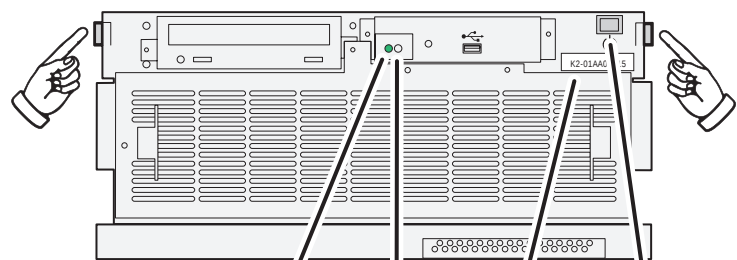
If using analog audio, connect inputs and outputs as needed per channel

Refer to *K2 Media Client System Guide* for RS-422 connections.

Connect other cables as needed. Refer to the *K2 Media Client System Guide* for complete cabling and network instructions.

2. Power on

- 1 Press both bezel-release buttons and flip down front bezel.



- 2 Identify the following: Power LED, Service LED, Serial number, Standby switch

- 3 Press the standby switch to power on. At first startup, End User License Agreements appear on the screen. Accept the agreements to continue.

Normal startup sequence

Power LED goes on and stays on. Service LED stays off. Startup processes complete in approximately two minutes and the K2 Media Client is ready for remote connection and operation.

Note: Add shared storage models to a K2 Storage System before proceeding.

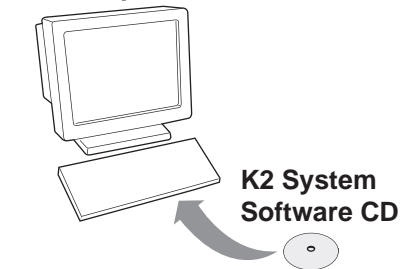
3. Install control point software

Note: You can skip ahead if you are:

- Using the Grass Valley control point PC. Skip to step 4.
- Accessing the K2 Media Client locally only. Skip to step 5.

- 1 Choose a network-connected PC as your control point.

Control point PC



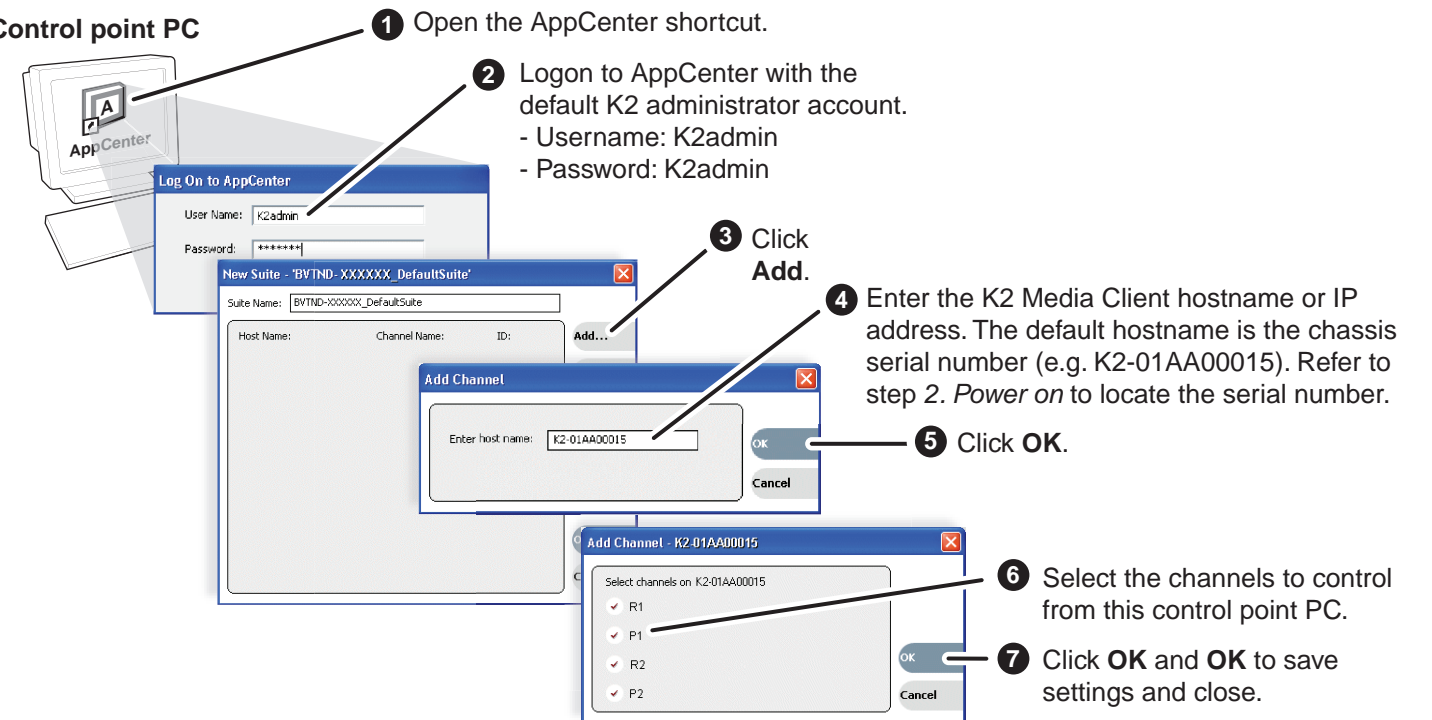
- 2 Insert CD, open the *Control Point* folder and run *setup.exe*.
- 3 Follow on-screen instructions, clicking **Next**, **Install**, and **Finish**.

PC System requirements

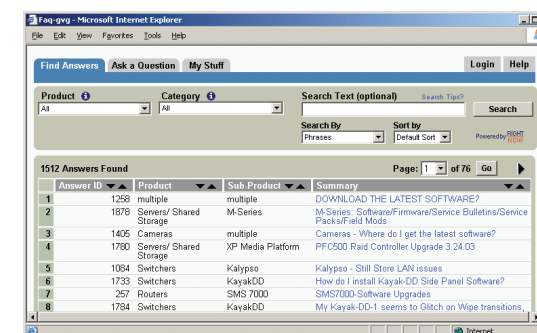
Microsoft Windows XP Professional, Service Pack 2 (U.S. version)
Pentium 4 or higher class processor, 2 GHz or greater
Minimum 512 MB RAM, 1 GB recommended
400 MB hard disk space
Graphics acceleration with at least 128 MB memory
Microsoft .NET Framework 1.1 (available on K2 System Software CD)
MS XML 4, Service Pack 2 (available on K2 System Software CD)

4. Make remote connection

Control point PC



Continue with Quick Start procedures on the reverse side.



International (France)	+800 80 80 20 20	Italy	+39 02 24 13 16 01
International (United States, Canada)	+33 1 48 25 20 20	Belarus, Russia, Ukraine, Tadzikistan, Uzbekistan	+39 06 87 20 35 42
Hong Kong, Taiwan	+800 547 8949	Indian Subcontinent	+7 095 258 09 20
Korea, Macau	+1 530 478 4148		+33 (0) 2 334 90 30
Australia, New Zealand	+852 2531 3058		+91 11 515 282 502
Central, South America			+91 11 515 282 504
China	+61 1300 721 495	Germany, Austria, E. Europe	+49 6150 104 44
Belgium	+55 11 5509 3440	Near East, Africa	+33 1 48 25 20 20
Japan	+861 066 0159 450	Netherlands	+31 (0) 35 62 38 421
Malaysia	+32 (0) 2 334 90 30	Northern Europe	+45 45 96 88 70
Middle East	+81 3 5484 6868	Singapore	+65 6379 1313
	+603 7805 3884	Spain	+41 487 80 02
	+971 4 299 64 40	UK, Ireland, Israel	+44 118 923 0499

