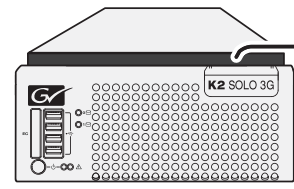
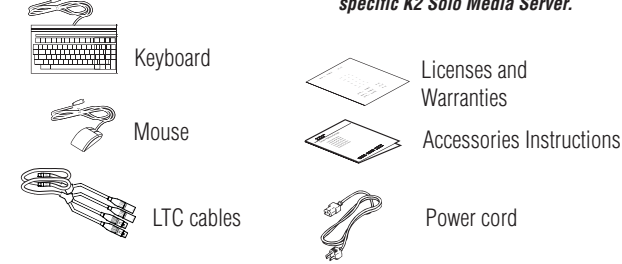


# K2 Solo 3G Media Server Quick Start Guide

071-8872-00 October 15, 2012  
Before you begin, unpack the following items.



Recovery Flash Drive contains:  
-K2 Release Notes  
-K2 Doc Set  
-Software and images.  
**NOTE: Do not lose the Recovery Flash Drive. It contains the image for this specific K2 Solo Media Server.**



Locate the documentation you need on the Recovery Flash Drive or download from [http://www.grassvalley.com/dl/k2\\_summit](http://www.grassvalley.com/dl/k2_summit)

## Documentation path to install K2 Solo Media Server



## 1. Make cable connections

SDI connections			
	IN1	IN2	IN3
Standard	Active		
Multi-Cam*	Video1	Video2	
3D/Video + Key record*	Video (L eye)	Key (R eye)	
Super Slo-Mo*	Phase1	Phase2	Phase3

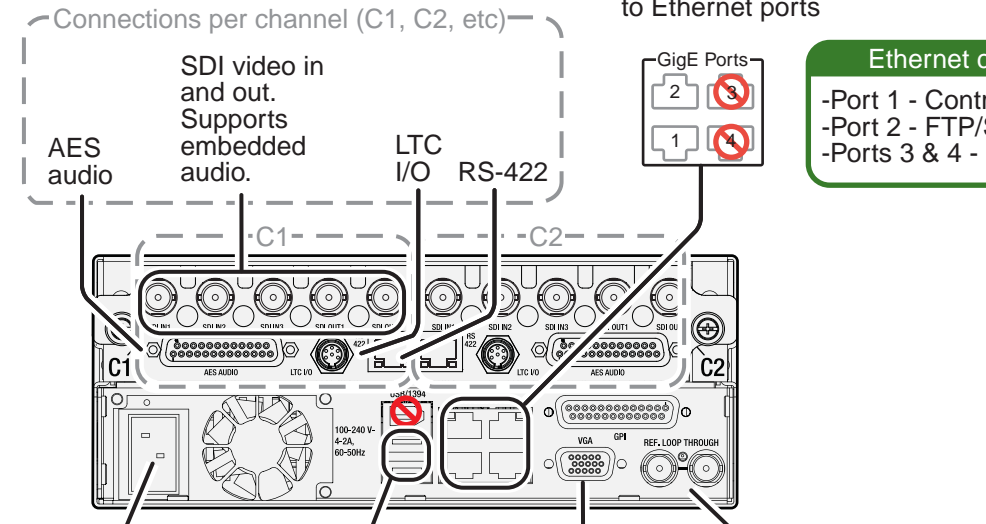
  

	OUT1	OUT2
Standard	Active	Active Duplicates OUT1
3D/Video + Key play*	Video (L eye)	Key (R eye)
Super Out*	Active	Super Out info

**Standard bi-directional channels**  
Each channel (C1, C2) can be an input (record channel) or an output (play channel). Connect video/audio IN and OUT to each channel, as appropriate for your intended use.

1 Make SDI connections on each channel

2 Connect network cables to Ethernet ports



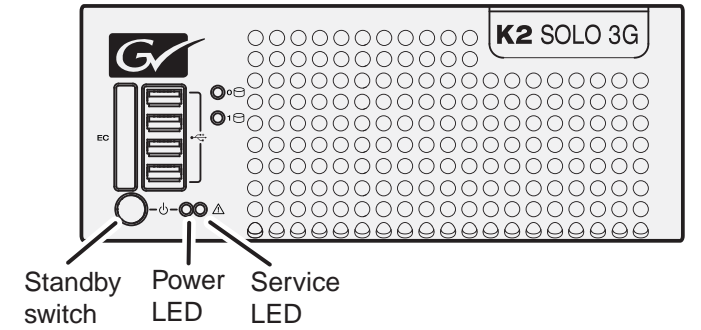
- 6 Connect power cord
- 5 Connect keyboard and mouse
- 4 Connect VGA monitor
- 3 If desired, connect reference

\*Some SDI connections require special licensing and configuration. Refer to the *K2 AppCenter User Manual*.

Make other connections as needed. Refer to the *K2 System Guide* for complete instructions.

## 2. Start up

1 Identify the following:



- 2 Press the standby switch to power on.
- 3 Log on with the default Windows admin account:  
-Username: Administrator  
-Password: adminGV!

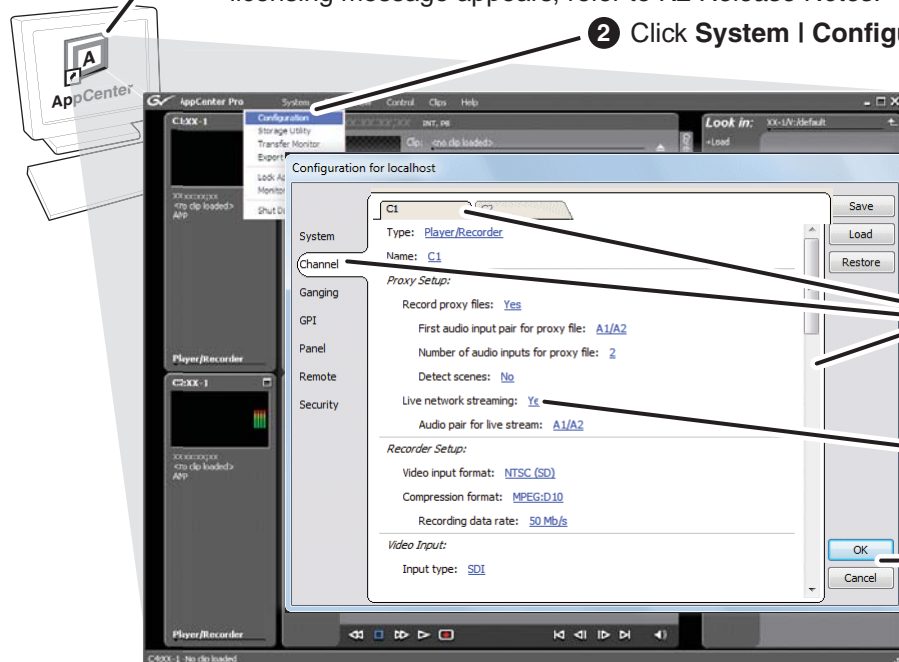
**Normal startup sequence**  
Power LED goes on and stays on. Service LED stays off.

4 On the Windows desktop, check the system tray. When the network icon indicates connectivity, the K2 Solo Media Server is operational.

## 3. Configure channels

1 Open AppCenter and logon with the administrator account (User Name=Administrator/Password=adminGV!). If a licensing message appears, refer to *K2 Release Notes*.

2 Click **System | Configuration**.



3 Click tabs, buttons, and scroll bar to locate settings.

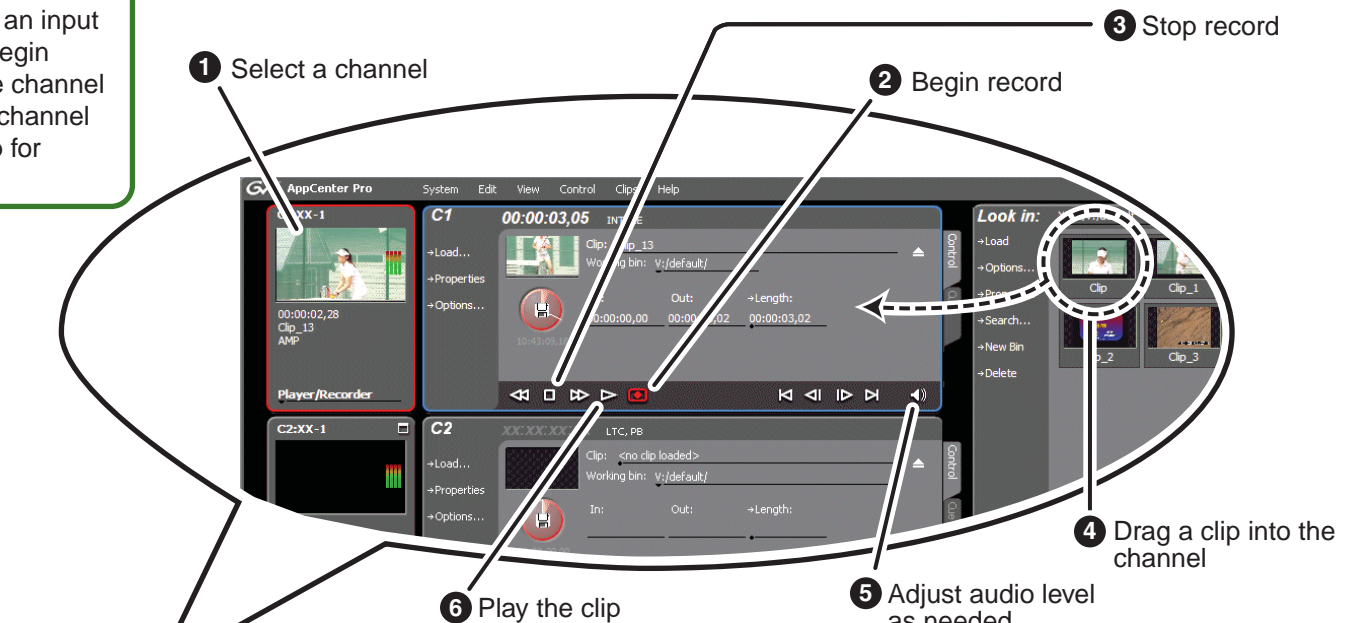
4 Select from drop-down lists to make settings.

5 Click **OK** and **Yes** to save settings.

## 4. Record and play

### Bi-directional channels

A channel becomes an input channel when you begin recording. The same channel becomes an output channel when you load a clip for playback.



1 Select a channel

2 Begin record

3 Stop record

4 Drag a clip into the channel

5 Adjust audio level as needed

6 Play the clip

**Timecode for Record**  
On the AppCenter menu, click **Control | Options**. On the Options dialog box click **Timecode** and select the timecode for recording and display.

## 5. Create a playlist

1 Select Playlist

2 Drag clips into the channel

3 Play the list

Refer to the AppCenter Help menu for complete information about playlist functionality and other operations, such as editing subclips.

## 6. Monitor

Click **View | Video Monitor**

- Toolbar
- Full Screen
- Video Monitor

### Video monitor support

The VGA resolution must be 1024 x 768 x 32 or greater to support live (moving) video monitoring.



## 7. Configure network, if desired

Refer to *K2 Release Notes* and the *K2 System Guide* for more information about SiteConfig and network configuration.

1 Take note of the chassis serial number, located on the rear of the unit.

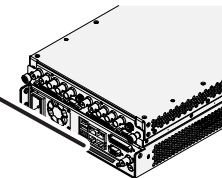
2 Choose your method for network configuration.

- **SiteConfig** – Install SiteConfig on a control point PC, discover the K2 Solo Media Server, and configure network interfaces.
- **Manual configuration** – At the local K2 Solo Media Server, use standard Windows operating system procedures.

3 Configure Control Team for the control network.

4 If desired, configure Media Connection #1 for the FTP/Streaming network.

5 Configure network name resolution via host files or otherwise, as required by on-site networking. FTP/Streaming network hostnames must include “\_he0” suffix.



### Default network settings

DHCP is enabled and the chassis serial number is the hostname.

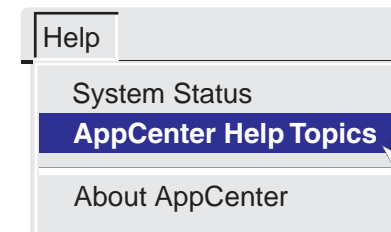
### Ethernet connection names

This rear panel GigE port... Is named this in Windows Network Connections...

- |   |                                      |
|---|--------------------------------------|
| 1 | Control Team (Control Connection #1) |
| 2 | Media Connection #1                  |
| 3 | Media Connection #2                  |
| 4 | Control Team (Control Connection #2) |

## 8. For more information...

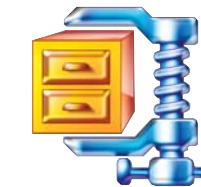
In AppCenter, click **Help | AppCenter Help Topics** and read the complete documentation for operating and configuring K2 Summit Production Client channels.



Go to <http://www.grassvalley.com/support> and find solutions to problems.



Find the complete documentation set for K2 products in the K2/Stratus Doc Set zip file on the Recovery Flash Drive or by downloading from [http://www.grassvalley.com/dl/k2\\_summit](http://www.grassvalley.com/dl/k2_summit).



- User Guide
- System Guide
- Service Manual
- SAN Manual
- Cabling Guide



Use the following information to contact product support by phone during business hours. Afterhours phone support is available for warranty and contract customers.

**North America**

+800 547 8949  
+1 530 478 4148

International – For local phone and email support go to: <http://www.grassvalley.com/support/contact>

