

K2 TIMEDELAY

APPLICATION SOFTWARE



K2 TimeDelay User Manual
Software Version 7.1



Affiliate with the N.V. KEMA in The Netherlands



CERTIFICATE

Certificate Number: 510040.001

The Quality System of:

Thomson Inc, and its worldwide Grass Valley division affiliates DBA GRASS VALLEY

Headquarters
400 Providence Mine Rd
Nevada City, CA 95959
United States

15655 SW Greystone Ct.
Beaverton, OR 97006
United States

10 Presidential Way
Suite 300
Woburn, MA 01801
United States

Kapittelweg 10
4827 HG Breda
The Netherlands

7140 Baymeadows Way
Ste 101
Jacksonville, FL 32256
United States

2300 So. Decker Lake Blvd.
Salt Lake City, UT 84119
United States

Rue du Clos Courtel
CS 31719
35517 Cesson-Sevigné Cedex
France

1 rue de l'Hautil
Z.I. des Boutries BP 150
78702 Conflans-Sainte
Honorine Cedex
France

Technopole Brest-Iroise
Site de la Pointe du Diable
CS 73808
29238 Brest Cedex 3
France

40 Rue de Bray
2 Rue des Landelles
35510 Cesson Sevigné
France

Spinnereistrasse 5
CH-5300 Turgi
Switzerland

Brunnenweg 9
D-64331 Weiterstadt
Germany

Carl-Benz-Strasse 6-8
67105 Schifferstadt
Germany

Including its implementation, meets the requirements of the standard:

ISO 9001:2008

Scope:

The design, manufacture and support of video and audio hardware and software products and related systems.

This Certificate is valid until: June 14, 2012
This Certificate is valid as of: June 14, 2009
Certified for the first time: June 14, 2000

H. Pierre Sallé
President
KEMA-Registered Quality

The method of operation for quality certification is defined in the KEMA General Terms And Conditions For Quality And Environmental Management Systems Certifications. Integral publication of this certificate is allowed.

KEMA-Registered Quality, Inc.
4377 County Line Road
Chalfont, PA 18914
Ph: (215)997-4519
Fax: (215)997-3809

CRT 001 073004

Accredited By:
ANAB

Experience you can trust.



K2 TIMEDELAY

APPLICATION SOFTWARE

K2 TimeDelay User Manual
Software Version 7.1

Copyright

Copyright © Grass Valley, Inc. All rights reserved. Printed in the United States of America. Portions of software © 2000 – 2009, Microsoft Corporation. All rights reserved. This document may not be copied in whole or in part, or otherwise reproduced except as specifically permitted under U.S. copyright law, without the prior written consent of Grass Valley, Inc., P.O. Box 59900, Nevada City, California 95959-7900. This product may be covered by one or more U.S. and foreign patents.

Disclaimer

Product options and specifications subject to change without notice. The information in this manual is furnished for informational use only, is subject to change without notice, and should not be construed as a commitment by Grass Valley, Inc. Grass Valley, Inc. assumes no responsibility or liability for any errors or inaccuracies that may appear in this publication.

U.S. Government Restricted Rights Legend

Use, duplication, or disclosure by the United States Government is subject to restrictions as set forth in subparagraph (c)(1)(ii) of the Rights in Technical Data and Computer Software clause at DFARS 252.277-7013 or in subparagraph (1) and (2) of the Commercial Computer Software Restricted Rights clause at FAR 52.227-19, as applicable. Manufacturer is Grass Valley, Inc., P.O. Box 59900, Nevada City, California 95959-7900 U.S.A.

Trademarks and Logos

Grass Valley, K2, Aurora, Summit, Dyno, Solo, Infinity, Turbo, Profile, Profile XP, NetCentral, NewsBrowse, NewsEdit, NewsQ, NewsShare, NewsQ Pro, and Media Manager are either registered trademarks or trademarks of Grass Valley, Inc. in the United States and/or other countries. Grass Valley, Inc. products are covered by U.S. and foreign patents, issued and pending. Additional information regarding Grass Valley, Inc. trademarks and other proprietary rights may be found at www.grassvalley.com.

Other trademarks and logos used in this document are either registered trademarks or trademarks of the manufacturers or vendors of the associated products, such as Microsoft® Windows® operating system, Windows Media® player, Internet Explorer® internet browser, and SQL Server™. QuickTime and the QuickTime logo are trademarks or registered trademarks of Apple Computer, Inc., used under license therefrom.



Revision Status

Rev Date	Description
20 February 2007	Initial release of K2 TimeDelay User Manual 071-8510-01
30 October 2009	Updated K2 TimeDelay User Manual 071-8727-00 for use with K2 Summit Production Client and K2 Solo Media Server

Contents

Preface	7
Grass Valley Product Support	7
About K2 TimeDelay	9
K2 TimeDelay overview	9
K2 TimeDelay channel panes.....	10
K2 TimeDelay menu	11
K2 TimeDelay settings.....	12
Lock/Unlock AppCenter.....	13
K2 TimeDelay messages.....	13
Status Bar messages.....	13
Channel status.....	13
Error messages	13
Using K2 TimeDelay.....	14
Before using K2 TimeDelay	14
Starting a new session manually	15
Starting a new session automatically	15
Stopping a K2 TimeDelay session.....	15
Modifying the time of day timecode source	15
Adjusting K2 TimeDelay playback	16
Changing K2 TimeDelay audio levels.....	16
Recovering from K2 TimeDelay disruptions	17
Purging media with K2 TimeDelay	17
Using K2 TimeDelay clip in another application	18
Index	19

Preface

K2 TimeDelay is an optional application designed to interface with AppCenter. Since K2 TimeDelay is not a standalone application, the K2 TimeDelay documentation is provided to supplement the existing server documentation. This manual does not cover basic AppCenter tasks except where they overlap with TimeDelay functions.

Once K2 TimeDelay is installed, AppCenter includes a TimeDelay item in the application droplist on all channels capable of recording.

For more information on installing K2 TimeDelay, see the *K2 TimeDelay Release Notes*.

Grass Valley Product Support

To get technical assistance, check on the status of a question, or to report new issue, contact Grass Valley Product Support via e-mail, the Web, or by phone or fax. Contact Grass Valley first regarding problems with third party software on Grass Valley products, such as the Microsoft® Windows® operating system, Windows Media® player, Internet Explorer® internet browser, and SQL Server™.

Web Technical Support

To access support information on the Web, visit the product support Web page on the Grass Valley Web site. You can download software or find solutions to problems by searching our Frequently Asked Questions (FAQ) database.

World Wide Web: <http://www.thomsongrassvalley.com/support/>

Technical Support E-mail Address: gvgtechsupport@thomson.net

Phone Support

Use the following information to contact product support by phone during business hours. Afterhours phone support is available for warranty and contract customers.

International (France)	+800 80 80 20 20 +33 1 48 25 20 20	Italy	+39 02 24 13 16 01 +39 06 87 20 35 42
International (United States, Canada)	+1 800 547 8949 +1 530 478 4148	Belarus, Russia, Tadzikistan, Ukraine, Uzbekistan	+7 095 258 09 20 +33 (0) 2 334 90 30
Hong Kong, Taiwan, Korea, Macau	+852 2531 3058	Indian Subcontinent	+91 11 515 282 502 +91 11 515 282 504
Australia, New Zealand	+61 1300 721 495	Germany, Austria, Eastern Europe	+49 6150 104 444
Central, South America	+55 11 5509 3440	Near East, Africa	+33 1 48 25 20 20
China	+861 066 0159 450	Netherlands	+31 (0) 35 62 38 421
Belgium	+32 (0) 2 334 90 30	Northern Europe	+45 45 96 88 70
Japan	+81 3 5484 6868	Singapore	+65 6379 1313

Malaysia	+603 7805 3884	Spain	+41 487 80 02
Middle East	+971 4 299 64 40	UK, Ireland, Israel	+44 118 923 0499

Authorized Support Representative

A local authorized support representative may be available in your country. To locate the support representative for your country, visit the product support Web page on the Grass Valley Web site.



END-OF-LIFE PRODUCT RECYCLING NOTICE

Grass Valley's innovation and excellence in product design also extends to the programs we've established to manage the recycling of our products. Grass Valley has developed a comprehensive end-of-life product take back program for recycle or disposal of end-of-life products. Our program meets the requirements of the European Union's WEEE Directive, the United States Environmental Protection Agency, and U.S. state and local agencies.

Grass Valley's end-of-life product take back program assures proper disposal by use of Best Available Technology. This program accepts any Grass Valley branded equipment. Upon request, a Certificate of Recycling or a Certificate of Destruction, depending on the ultimate disposition of the product, can be sent to the requester.

Grass Valley will be responsible for all costs associated with recycling and disposal, including freight. However, you are responsible for the removal of the equipment from your facility and packing the equipment to make it ready for pickup.



For further information on the Grass Valley product take back system please contact Grass Valley at + 800 80 80 20 20 or +33 1 48 25 20 20 from most other countries. In the U.S. and Canada please call 800-547-8949 or 530-478-4148, and ask to be connected to the EH&S Department. Additional information concerning the program can be found at: www.thomsongrassvalley.com/environment



About K2 TimeDelay

K2 TimeDelay is an optional control application that runs in the AppCenter application on your local K2 Summit Production Client. TimeDelay records incoming source material and delays the playback of the media. You can determine the length of the delay. The system notifies you if you have exceeded the limit of the available disk space. TimeDelay allows you to start recording on the assumption that you will make sufficient room manually. TimeDelay requires K2 Summit software version 7.1 or higher.

The record and play channels need to be on the same K2 system. Multiple sessions of TimeDelay can run simultaneously if there are enough record and playback channels on the K2. For example, in a K2 Summit Production Client with two record and two play channels, you could have two sessions of TimeDelay running, each with one recorder and one playback channel.

This section is divided into the following topics:

[“K2 TimeDelay overview” on page 9](#)

[“K2 TimeDelay channel panes” on page 10](#)

[“K2 TimeDelay menu” on page 11](#)

[“K2 TimeDelay settings” on page 12](#)

[“K2 TimeDelay messages” on page 13](#)

K2 TimeDelay overview

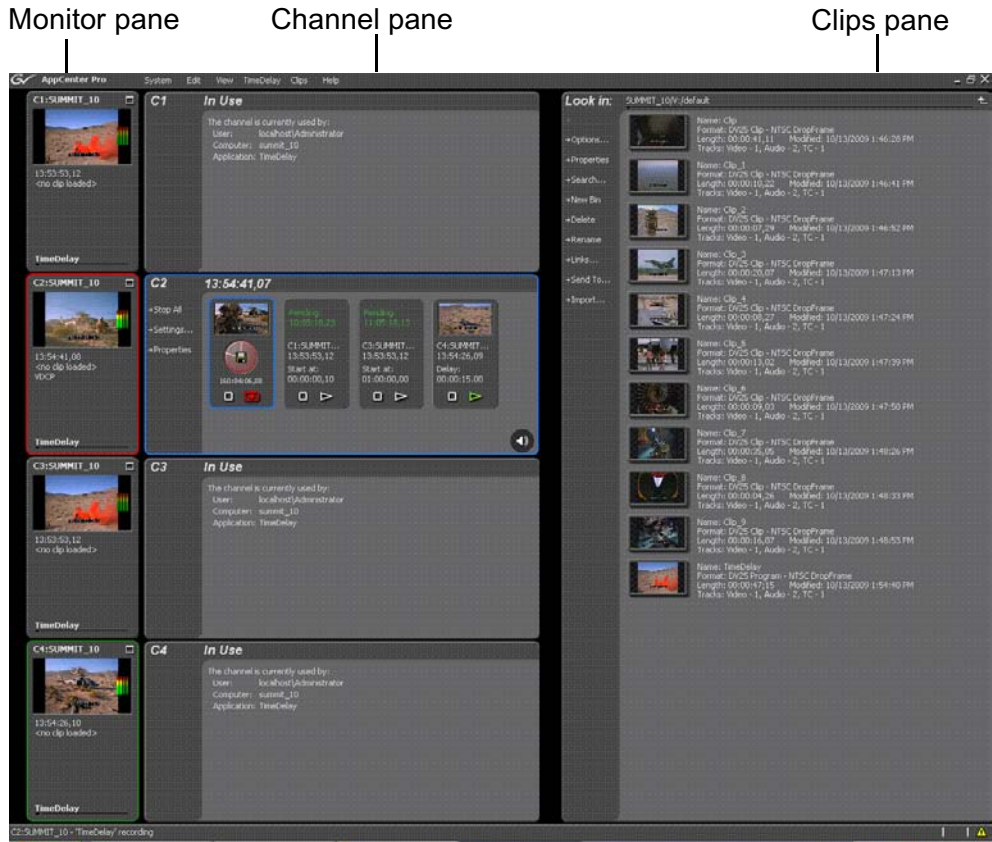
K2 TimeDelay allows you to view a summary of all the channels controlled by this TimeDelay session. When you select a channel, it is highlighted with a blue background; all other channels have a grey background. Only the selected channel responds to keyboard input such as using keyboard shortcuts to Play, Record, or Stop.

This section describes the graphical interface. The picture below shows the TimeDelay pane with 3 playback channels: C2 and C3 are pending; C4 has started playing. C1 is the selected channel.



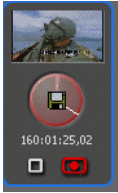
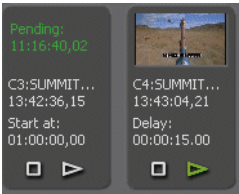
Note that the play channels used by this session of K2 TimeDelay do not show the TimeDelay application to their right. Instead, they show that the channel is in use by the TimeDelay application running on the corresponding record channel. Use the recording channel to interact with the TimeDelay application. In the monitor pane, a red outline indicates a recording channel and a green outline indicates a channel that is currently playing media.

The following illustration shows a K2 Summit Production Client. C2 is recording (note the red outline around the monitor pane), C1 and C3 are pending, and C4 is playing out the media (note the green outline around monitor pane).



K2 TimeDelay channel panes

When the channel associated with a pane is selected, the pane is highlighted with a blue outline. This indicates that both the keyboard controls and the status bar now belong to this channel.

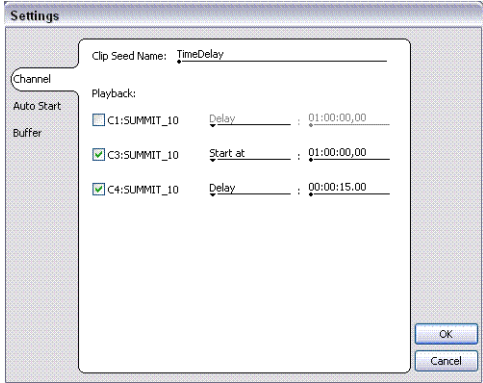
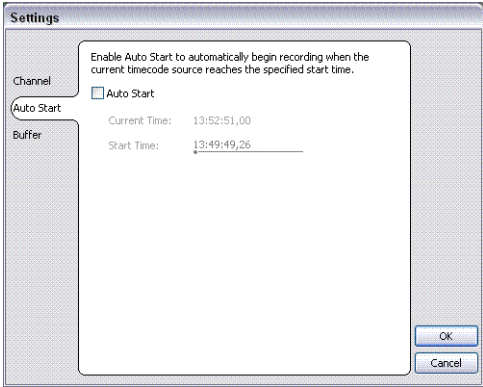
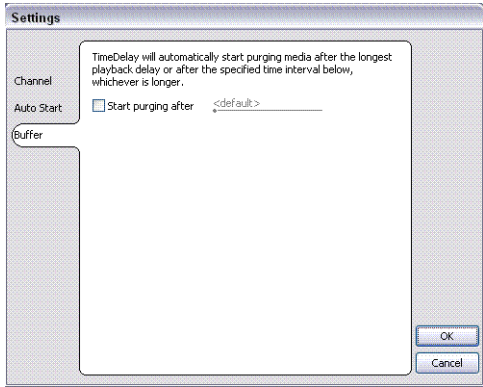
Channel	Description
<p>Record channel (selected channel)</p> 	<p>The record channel pane contains a thumbnail, time dome, and stop and record controls. The thumbnail for the currently recording asset is displayed above the time dome. If no thumbnail can be found or created, an icon is displayed indicating that there is no thumbnail available. Unlike the thumbnail in the Recorder application, this thumbnail is updated every 10–20 seconds to reflect the current record position.</p> <p>The Time Dome control graphically displays the remaining storage and shows estimated remaining time available on the drive. A filled Time Dome represents no storage remaining. A “sweep second hand” shows that recording is in progress. This is represented as a white line on the Time Dome that sweeps through a complete revolution every ten seconds.</p> <p>The Record and Stop controls manually start and stop the TimeDelay session. This starts and stops all channels currently controlled by that TimeDelay session, including the playback channels.</p> <p>A selected channel is indicated by a blue outline.</p>
<p>Play channels (pending and playing)</p> 	<p>Each play channel contains a thumbnail, the channel and machine name, timecode, preset delay value, and stop and play controls.</p> <p>Before playback starts, the play channel displays a countdown in place of the thumbnail. After playback starts, the thumbnail appears, and is updated every 10–20 seconds to represent a roughly current playback position.</p> <p>The Play and Stop controls can be used to manually start and stop playback. When you press Play, the delay changes to indicate the appropriate time differential. When you press Stop and then press Play, playback does not resume where it was paused. Instead, playback jumps to the correct delay position.</p> <p>If you pause a play channel that was started with Start At, it automatically switches to Delay to maintain the initial offset.</p> <p>If you pause a play channel pause or stop a playing channel, then go to the Settings dialog box to change that channel from Delay to Start At, you must hit Play for the change to take effect.</p>

K2 TimeDelay menu

When the K2 TimeDelay application is active, a TimeDelay menu appears in AppCenter’s main window. The following table describes the menu items.

Menu item	Description
Stop All/Start	This menu item and the corresponding tool bar control toggle between Start and Stop All, depending on whether or not a TimeDelay session is in progress. It has the same effect as the Record and Stop controls on the record channel pane.
Properties	Displays the properties for the program that is being recorded in a dialog box.
Settings	Opens the TimeDelay Settings dialog box.

K2 TimeDelay settings

Setting	Description
<p>Channel</p> 	<p>Allows you to select the playback channel(s). Up to three checkboxes might be available, depending on the number of channels available.</p> <p>Provides a default clip seed name of TimeDelay. You can enter a clip seed name of up to 28 characters.</p>
<p>Auto Start</p> 	<p>Enables Auto Start to begin recording automatically when the current timecode source reaches the designated start time.</p>
<p>Buffer</p> 	<p>K2 TimeDelay automatically determines the buffer size. By default, the record buffer size is based on the largest playback delay. You can customize the buffer size, but it must always be larger than the minimum buffer size.</p>

Lock/Unlock AppCenter

The Lock/Unlock feature in AppCenter Workstation allows you to lock the entire AppCenter application.

It could be useful after the TimeDelay starts running in order to prevent any accidental interference with its operation.

To lock the AppCenter, select Lock from the AppCenter System menu.

When AppCenter is unlocked it does not respond to keyboard or mouse input (except to unlock AppCenter). However, the status of any application in AppCenter, including TimeDelay, is still updated as normal.

To unlock AppCenter, do the following:

1. Press any key on the keyboard, or click the left mouse button anywhere in the AppCenter window.
2. A dialog appears to confirm that you want to unlock AppCenter. Click **Yes**.

K2 TimeDelay messages

This section is divided into the following topics:

[“Status Bar messages” on page 13](#)

[“Channel status” on page 13](#)

[“Error messages” on page 13](#)

Status Bar messages

The K2 TimeDelay application displays status information and error messages on the AppCenter status bar.

Channel status

The K2 TimeDelay application displays status messages on the AppCenter status bar for the active channel. The message describes whether the channel is recording, playing, pending, or stopped.

The messages have this format:

`<channel>: <machine> - '<timedelay session name>' message.`

Error messages

The K2 TimeDelay application displays error messages in the AppCenter status bar. For example, if recording fails for some reason after a record session has begun.

Using K2 TimeDelay

This section is divided into the following topics:

- [“Before using K2 TimeDelay” on page 14](#)
- [“Starting a new session manually” on page 15](#)
- [“Starting a new session automatically” on page 15](#)
- [“Stopping a K2 TimeDelay session” on page 15](#)
- [“Modifying the time of day timecode source” on page 15](#)
- [“Adjusting K2 TimeDelay playback” on page 16](#)
- [“Changing K2 TimeDelay audio levels” on page 16](#)
- [“Recovering from K2 TimeDelay disruptions” on page 17](#)
- [“Purging media with K2 TimeDelay” on page 17](#)
- [“Using K2 TimeDelay clip in another application” on page 18](#)

Before using K2 TimeDelay

Before you can access K2 TimeDelay, you need to log on to a K2 Summit Production Client or K2 Media Solo Server and launch AppCenter. (You can set up AppCenter to log you in automatically. For more information, see the *K2 AppCenter User Manual*.) When AppCenter is started, an application is launched for each channel. To change the application running on a channel, select a new application from the channel’s application drop-down list. TimeDelay only appears in a channel’s drop-down list if that channel is capable of recording.

A TimeDelay session uses one record channel and one or more play channels. To interact with the TimeDelay application, you must activate the record channel that it is using. To activate the channel, you can select the channel from inside the channel status pane or click on the TimeDelay application in the applications pane.

To start TimeDelay on a channel, follow these steps:

1. Select the channel you want to record on.
2. Select TimeDelay from the channel’s application drop-down list. (If the channel is not capable of recording, TimeDelay does not display as an option.)
3. The K2 TimeDelay application starts. In the Settings dialog box, select the play channel or channels for this TimeDelay session.
4. Specify the playback start time either in terms of delay or give an exact start time.
5. (Optional) Set up the AutoStart or Buffer. For more information, see [“K2 TimeDelay settings” on page 12](#).
6. Click **OK**. The settings do not take affect until you click **OK**.

NOTE: *If any of the selected channels are actively playing or recording, a confirmation message box appears before TimeDelay commandeers the channel.*

Starting a new session manually

If you are already in the K2 TimeDelay application, you can start a new session manually. To start a new session, do the following:

1. If any channel controlled by TimeDelay is still running, click the Stop control on the record channel.
2. You can click the Settings button to open the TimeDelay Settings dialog to setup the new session. Otherwise, the last settings are used.
3. Click the Record control on the record channel, click the Start tool bar control, or select the Start menu item. The play channel(s) will start their delay session.

Starting a new session automatically

The TimeDelay process can be started automatically at a specific timecode value, regardless of the timecode source.

To automatically start TimeDelay, do the following:

1. To open the TimeDelay Settings dialog box, click on Settings button or select **TimeDelay | Settings**.
2. Select the Auto Start tab.
3. Check the Auto Start checkbox.
4. In the Start Time field, enter the appropriate start time. The start time must be at least 10 seconds ahead of the current time.
5. Click **OK** to close the TimeDelay Settings dialog box. The record is not scheduled until you press **OK**.

When auto start is activated, a countdown is shown in place of the thumbnail for the record channel.

Stopping a K2 TimeDelay session

To stop the TimeDelay session, do one of the following:

- Click the Stop All tool bar button.
— or —
- Select the Stop All menu item.
— or —
- Click the Stop control on the record channel.

Modifying the time of day timecode source

The time of day timecode is displayed in the upper-left of the TimeDelay title bar. It is used to schedule playback (and record when using the auto start feature) and is the timecode recorded to the TimeDelay clip.

***NOTE:** To ensure frame accuracy, Grass Valley recommends using an external timecode source such as LITC.*

To modify the time of day source, do the following:

1. Select **System | Configuration**.
2. Select the System tab.
3. In the Time Of Day section, select the source.
4. Click **OK** to close the Configuration dialog box.

Adjusting K2 TimeDelay playback

Use the TimeDelay Settings dialog box to modify the start time either in terms of delay or give a specific start time. Once you have clicked the **OK** button, TimeDelay adjusts the playback in one of two ways:

- If playback has not started, TimeDelay schedules the playback as usual.
— or —
- If playback has already started, clicking the **OK** button causes TimeDelay to stop the playback on that channel, cue to the new delay offset, and begin playback at the new position.

The maximum delay allowed is 23:59:59;29. If a delay larger than the maximum is entered, TimeDelay converts the entered value to less than the maximum. For example, if you enter a value of 24:10:59;29 TimeDelay converts it to 00:10:59;29. If you enter a value of 25:10:59;29 TimeDelay converts it to 01:10:59;29.

Playback delays that are too small are automatically adjusted to the closest valid value. The minimum playback delay is based on the video server that the TimeDelay channels reside on; it is summarized in the following table.

Video server	Minimum playback delay (seconds)
K2 Summit Production Client with internal storage or K2 Solo Media Server	15
K2 Summit Production with external storage	25

You can modify the length of the K2 TimeDelay playback delay. The system notifies you if you have exceeded the limit of the available disk space. TimeDelay allows you to start recording on the assumption that you will make sufficient room manually.

Changing K2 TimeDelay audio levels

You can modify the audio levels for the record channel or any one of the playback channels independently. To open the Meters window, select the TimeDelay channel and click on the Meters button in the lower right-hand corner.



This window contains a meter for each audio input or output (depending on the current channel selection) that displays the audio level.



Each audio meter indicates the final (adjusted) audio level on the audio input or output for that track. A decibel scale is displayed alongside the sliders.

To adjust the input gain for the record channel or the output gain for a play channel, move the slider on the meter. To snap all the gain levels back to Unity default, click the Unity button. To change all gain levels proportionately when any one of them is moved, click the Gang checkbox.

Recovering from K2 TimeDelay disruptions

If K2 TimeDelay is disrupted, due to operator error or power cycle, it restarts automatically at the correct position. (To restart TimeDelay without logging in, you need to configure auto login in Appcenter. For more information, see the *K2 AppCenter User Manual*.)

To initiate auto recovery, AppCenter must be restarted, either manually or automatically on reboot. TimeDelay reloads the clip, jumps to the correct position, and begins recording or playback depending on which operations were in progress during the failure. It fills in black video where the system was not recording, so that the clip length and delays are exactly maintained.

Purging media with K2 TimeDelay

By default, K2 TimeDelay automatically starts purging media after the longest playback delay, but you can specify a longer time interval after which purging will begin. This could be useful if you want to use the underlying clip in another application, potentially on another server that shares the same storage. The purge interval is the period between the start of recording and the start of the media purge.

You are notified if there is not enough disk space to support recording for this time interval. If so, the application allows the record to start on the assumption that you will make sufficient room manually. If the server runs out of storage, recording stops.

To set the time interval for purging, do the following:

1. Click the Settings button or select Settings menu item from the Menu to open the TimeDelay Settings dialog box.
2. Select the Buffer page.
3. Check the Start purging after check box and enter a time interval. If the specified time interval is shorter than the longest playback delay, then purging does not begin until after the longest playback delay.

-
4. Click **OK** to close the TimeDelay Settings dialog box.

Using K2 TimeDelay clip in another application

The clip recorded by K2 TimeDelay can be used in other applications, in a similar manner to any other clip on the system. For example, you can load it into the Player application and play it or create subclips from it.

***NOTE:** When the purge interval is reached, the oldest media is purged. The first frames will be deleted as the session continues along. For more information on purging media, see [“Purging media with K2 TimeDelay”](#).*

Index

A

appcenter, lock/unlock 13
audio levels, changing 16
auto start 12
autorecovery 17

B

buffer 12

C

channel 12
channel buttons 10
channel status 13
clip, using in other applications 18

D

delay
 maximum allowed 16
 minimum playback 16
disruption of TimeDelay session 17

E

error messages 13

M

menu 11

P

playback
 adjusting 16
 maximum allowed delay 16
 minimum delay 16
properties 11
purging media 17

R

restarting automatically 17

S

settings 11, 12
starting TimeDelay
 automatically 15
 manually 15

status bar messages 13
Stop All/Start 11
stopping TimeDelay 15

T

timecode source, modifying 15
TimeDelay overview 9

U

Using K2 TimeDelay 14

