



grass valley

A **BELDEN** BRAND

IGNITE

LIVE PRODUCTION CONTROL SYSTEM

Release Notes

Software Version 7.7.7

071879409
JULY 2016

CERTIFICATE

Certificate Number: 510040.001

The Quality System of:

Grass Valley, A Belden Brand and its Grass Valley Affiliates

Headquarters: 3499 Douglas-B Floreani St. Laurent, Quebec H4S 2C6 Canada	3030 NW Aloclek Drive Hillsboro, OR 97124 United States
Street Bergschot 69 4817 PA Breda The Netherlands	125 Crown Point Court Grass Valley, CA 95945 United States

Including its implementation, meets the requirements of the standard:

ISO 9001:2008

Scope:

St. Laurent HQ: The design, manufacture and support of video and audio products and systems.

Grass Valley and Hillsboro: Design, outsource manufacture and support.

Breda: Design, manufacture, including outsource manufacture, and support.

This Certificate is valid until: June 14, 2018
This Certificate is valid as of: June 14, 2015
Certified for the first time: June 14, 2000

Dr. Cem O. Onus
Managing Director, Business Assurance
DEKRA Certification, Inc.

The method of operation for quality certification is defined in the DEKRA Master Services Agreement. Integral publication of this certificate is allowed.

DEKRA Certification, Inc.
1120 Welsh Road, Suite 210
North Wales, PA 19454
USA
Ph: (215)997-4519
Fax: (215)997-3810
ISO 9001 Cert 03/09/2015 Rev C

Accredited By:
ANAB



Copyright and Trademark Notice

Copyright © Grass Valley Canada. All rights reserved.

Belden, Belden Sending All the Right Signals, and the Belden logo are trademarks or registered trademarks of Belden, Inc. or its affiliated companies in the United States and other jurisdictions. Grass Valley is a trademark or registered trademark of Grass Valley Canada. Belden, Inc., Grass Valley Canada, and other parties may also have trademark rights in other terms used herein.

Grass Valley Web Site

The Grass Valley Web (<http://www.grassvalley.com/support>) site offers the following:

Online User Documentation — Current versions of product catalogs, brochures, data sheets, ordering guides, planning guides, manuals, and release notes in .pdf format can be downloaded.

FAQ Database — Solutions to problems and troubleshooting efforts can be found by searching our Frequently Asked Questions (FAQ) database.

Software Downloads — Download software updates, drivers, and patches.

Grass Valley Technical Support

For technical assistance, contact our international support center, at 1-800-547-8949 (US and Canada) or +1 530 478 4148.

To obtain a local phone number for the support center nearest you, please consult the Contact Us section of Grass Valley's web site.

An online form for e-mail contact is also available from the web site.

Recycling

Visit www.grassvalley.com for recycling information.

Contents

Ignite Release Notes	9
Introduction	9
Release History	9
New Functionality	10
Enhanced Functionality	10
Enhanced Support for VizRT CG Timed Events	10
Enhanced Support for Mix/Wipe via Aux Bus Transition on Konnect	11
Enhanced Support of Tally Controller with Lawo Audio	11
Enhanced Support of Tally Controller with Calrec/ SSL Audio	11
Enhanced Support of DMP workflow with GV STRATUS 4.8	12
Compatibility	12
Hardware	12
Software	13
Limitations or Restrictions	14
Installation and Configuration	14
Considerations	14
Hardware Installation	14
Software Installation	15
New Installation	15
Upgrade Installation	15
Configuration Notes	16

Ignite Release Notes

Introduction

This document describes compatibility, installation, and other information specific to Ignite Release 7.7.7 which is a minor release of the Ignite Live Production Control System.

Note For a current list of supported/controlled devices, contact an authorized Grass Valley reseller or contact Grass Valley sales directly.

Release History

The Ignite 7.7 release history is listed in [Table 1](#).

Table 1. Ignite Cumulative Release History

Release	Highlights
7.7	Initial 7.7 general release
7.7.6	Updates to the release matrix and bug fixes as listed below: <ul style="list-style-type: none">IGN-3835: Using Chryon Hyper X - From CG list, the CG icon does not load and play when placed on the timeline.IGN-3836: Ignite Crash - Unexpected Error when accepting rundown update.
7.7.7	Updates as listed below: <ul style="list-style-type: none">5 new feature enhancements in this release.Requires the installation of Microsoft .NET 4.6.1 and Microsoft Visual C++ Redistributable for VS 2015 Update 2. Except for Ignite running on Dell R710 with Microsoft Server 2008 (x86).Requires a database upgrade after installing the latest MOP Server.Bug fixes to improve Ignite's performance.Support for new versions of software and hardware in the release matrix.

New Functionality

Items included with this release:

- Import of VizRT CG items from rundowns as part of Timed Events with in/out timecode.
- Perform a mix/wipe with Aux Bus Transition via the Konnect interface.
- Support for Audio Tally controller rules with Calrec/SSL Audio Panel.
- Support for Audio Tally controller rules with Lawo Audio Panel.
- Support for VOD/Live Streaming in DMP workflow with GV STRATUS 4.8 release.

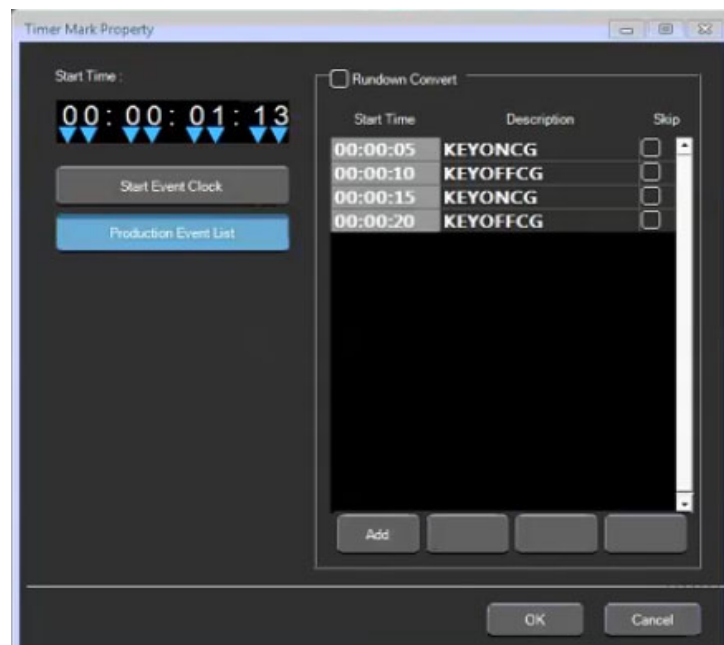
Enhanced Functionality

Ignite 7.7.7 new features include:

Enhanced Support for VizRT CG Timed Events

Ignite now supports the import of VizRT CG items from rundowns and display them within a time range as part of Timed Events. Users can view the in/out timecode of each VizRT CG item, and they are displayed automatically according to timed events on the show.

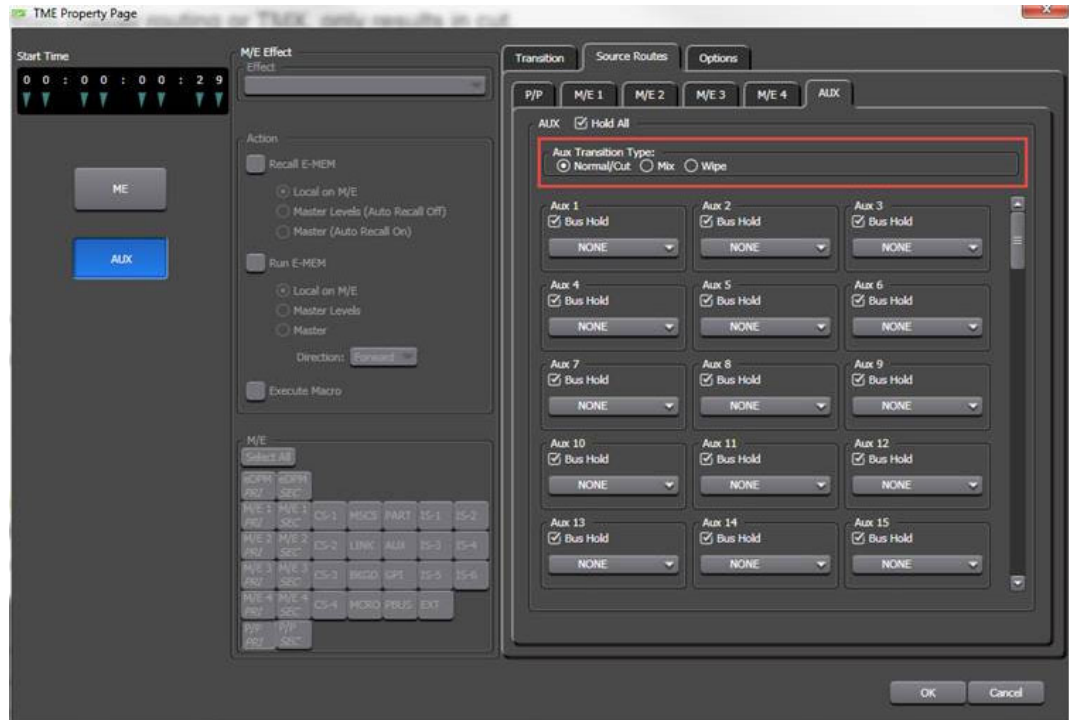
The in/out timecode can be viewed in the Timer Mark Property window as displayed below:



A CG production cue for VizRT can be configured in the IQ Configurator. For more details, refer to [CONFIGURATION NOTE 8](#) on page 20.

Enhanced Support for Mix/Wipe via Aux Bus Transition on Konnect

Ignite now supports the configuration of mix/wipe via Aux Bus Transition on the Konnect interface.



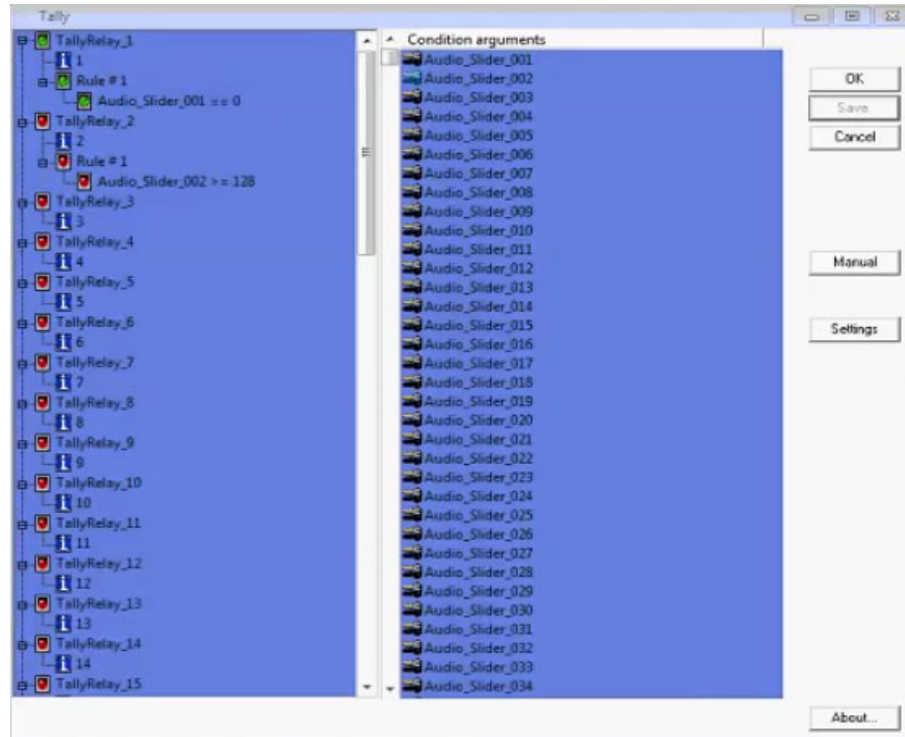
Enhanced Support of Tally Controller with Lawo Audio

Ignite now supports the program of tally logic to create a set of rules for the Lawo Audio Panel.

Enhanced Support of Tally Controller with Calrec/ SSL Audio

Ignite now supports the program of tally logic to create a set of rules for the Calrec/SSL Audio Panel.

An example of the audio tally controller configuration is displayed below:



Enhanced Support of DMP workflow with GV STRATUS 4.8

Ignite supports VOD/Live Streaming in the DMP workflow with GV STRATUS 4.8 application. It is required to install **Microsoft .NET 4.6.1** and **Microsoft Visual C++ Redistributable for VS 2015 Update 2** to support the workflow.

Compatibility

Hardware

This release is compatible with previous Ignite system hardware version 7.0 and above.

Software

This Ignite Release 7.7.7 only functions with the Media Object Portal (MOP) and does not support the XMOS server in previous systems. If a customer is being upgraded from any version of Ignite prior to:

- 5.2.0.0, you must run the AlloyConversionUtilities found in the Ignite installation folder
- 5.1.1, you must convert the customer's TME & Macro library with the the IgniteTMEProcessor found in the Ignite installation folder

Refer to the release matrix in [Table 2](#)

Table 2. Release Matrix

Application	Version	Application	Version
ENPS Server	7.46.7147	Yamaha Audio	1.35
ENPS Client	7.46.7147	Lawo Audio	5.0.2.0PL3
iNEWS Server	5.2.0.27	Klotz Audio	1.3.5.006
iNEWS Client	5.2.0.21	SSL Audio	5.0/5
iNEWS MOS Gateway	4.1.0.9	Enco Audio Server	9.2.2.265
Katalyst	2.1.4	Chyron (Duet and HyperX)	8.0 (build 1558)
Kayenne Frame Firmware	4.2.2d01	Miranda Vertigo/Xplay	4.9.540.0
K-Frame Firmware	9.1.0.5700	VizRT	2.12.19413
K-Frame Deployment Tool	9.1.0.5700	Vadis	1.35.006
K-Frame Menu	9.1.0.5700	Media Control	1.5.9.1
QUICBox Audio Firmware	1.19 1.11**	MOP	1.0.24
QUICBox Clip24 Firmware	1.09 1.07**	Ignite ActiveX	1.0.26
QUICBox Hardware Revision	1.11 1.21	Ignite Plugin	1.0.26
Klotz 888 Firmware	4.0.16	TME File Watcher	1.0.26
Klotz 880 Firmware	2.17.6	PortVision Plus	4.0.3
Klotz Audio Configurator	6.0.0.2	MOS	2.8.2
Elemental	2.3.1.22369	K2 Summit	9.4.2.2193
Control Firmware	NSLINK-7.14 Bootloader-3.15	GV STRATUS	4.8
Aurora Playout / Assignment List Plugin	7.0.0.33	GV STRATUS Rundown (formerly known as Aurora Playout)	9.8.0.2

Limitations or Restrictions

- On a virtual machine, faders in the Lawo audio and Katalyst can be jittery when moving those faders up and down. The problem does not exist with faders on a physical machine.
- Fader stereo state for Lawo audio may not be updated after loading a snapshot.
- Dual Streaming (2 M/E linked) operation problem exists between Ignite and K-Frame switchers. The problem does not exist with Kayak and Kayenne switchers.
- Audio module defect in the IQ Template Creator may cause Audio Tables to be mismatched after migration of the IQ Template file. The limitation is restricted to IQ Template files created with Ignite 7.6 and 7.7 software. Please contact Grass Valley to get the “AudioTaskMismatchCorrectionTool” if you encounter the problem.

Installation and Configuration

Considerations

- Ignite 7.7.7 is not an update, but a full installation.
- Ignite 7.7.7 requires Microsoft .NET 4.6.1 and Microsoft Visual C++ Redistributable for VS 2015 Update 2.

Note If your Ignite is running on Dell R710 with Microsoft Server 2008 (x86), do not upgrade to Microsoft .NET 4.6.1 and Microsoft Visual C++ Redistributable for VS 2015 Update 2.

- ScriptViewer is no longer sold with Ignite, but for upgrading customers, a corresponding ScriptViewer is available.
- When installing v7.7.7 Ignite on a system running v6.1.2 with a standalone Katalyst, it is best practice to first uninstall both Ignite v6.1.2 and the standalone Ignite Katalyst before proceeding with the v7.7.7 install.
- With v7.7.7, desktop experience must be enabled otherwise graphics might be compromised.

Hardware Installation

Only qualified Grass Valley Service Engineers are authorized to install Ignite Live Production Control System Release 7.7.7 software. Contact your local Grass Valley representative, your Grass Valley Ignite Technical Service representative, or Grass Valley Support Center.

Software Installation

Only qualified Grass Valley Service Engineers are authorized to install Ignite Live Production Control System Release 7.7.7 software. Contact your local Grass Valley representative, your Grass Valley Ignite Technical Service representative, or Grass Valley Support Center.

Installation has two parts:

- MOP server
- Ignite

New Installation

1. Run the IgniteMOPInstaller.msi for 1.0.24 on the MOP server.
2. Run the Ignite 7.7.7 Installer.exe on the Ignite workstation.
3. Select the feature set from installer options (Audio, Switcher Type, etc.) and finish the installation.

Upgrade Installation

MOP Server Upgrade

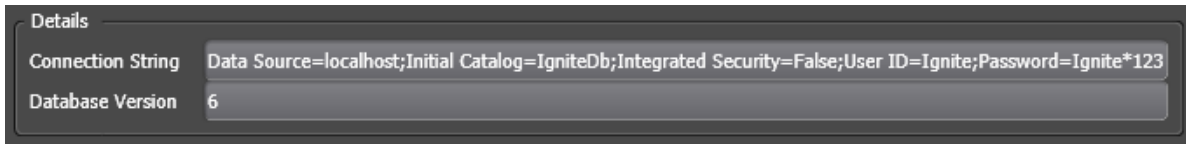
CAUTION It is imperative that you follow these instructions when UPGRADING to MOP Server 1.0.24 from a previous version.

Note This update requires more than just new software, but also has a database update component.

1. Stop all MOP services before the upgrade.
2. Manually uninstall MOP Server via Windows add/remove programs.
3. Run IgniteMOPInstaller.msi for 1.0.24 on the MOP server.
4. Launch the Ignite MOP Utility and select as below:
 - **Services > Start Services**
 - **Settings > Configure Database**
5. Ensure that the Database Version is 5 or less.

Note In the following step, the application might freeze for a few seconds, this is normal.

6. Under **Upgrade**, click **Upgrade Database**. When done, the:
 - Messages window displays **Upgrade complete**
 - Database Version displays **6**



Ignite Upgrade

Note If customer is being upgraded, and is using different audio, or a different switcher (i.e. going from Klotz to Calrec, or Kayak to Kayenne), after restoring setups, you will need to restore some registry settings manually. Refer to http://grassvalleyautomation.com/wiki/index.php?title=Ignite_Restore for more information.

If a customer is upgrading from any version of Ignite prior to:

- 5.2.0.0, you must run the AlloyConversionUtilities found in the Ignite installation folder
 - 5.1.1, you must convert the customer's TME & Macro library with the the IgniteTMEProcessor found in the Ignite installation folder
1. Backup the GrassValley folder and the TBMS registry.
 2. Copy the Ignite_7.7.7.0_FullInstall folder to the C:\Software directory.
 3. Run the Ignite 7.7.7.0 Installer.exe to uninstall previous version and backup configs.
 4. Take note of the name of the folder created in the D:\IgniteBackups folder.
 5. Run the Ignite 7.7.7.0 Installer.exe on the Ignite workstation.
 6. Select feature set from installer options (Audio, Switcher Type, etc.) and finish installation.

Configuration Notes

CONFIGURATION NOTE 1

Note Always perform a backup of the entire TME library before running a conversion via IgniteTMEProcessor.

If the customer is being upgraded and has any TMEs that addressed the ScriptViewer to append scripts and/or load CGs from the CG list, the TMEs must be converted.

In most cases, this is just a single TME (LP.tmx, LS.tmx, or something similar) that is embedded but if the customer uses multiple versions of this file type, all must be converted. Conversion is done via the IgniteTMEProcessor.exe in the root Ignite folder.

CONFIGURATION NOTE 2

- If the customer is being upgraded and is not using ScriptViewer, or for any reason would prefer to not see the Miniviewer in the Ignite GUI, this must be modified in the registry.

```
HKEY_LOCAL_MACHINE\SOFTWARE\TBMS\IPS\SCRIPT-
GUI\MINIVIEWMODE
0 = No Miniviewer1 = Miniviewer
```

- If the customer is not using ScriptViewer, it is recommended that the SV row in the timeline track be removed and replaced with another track (e.g. CG, Kayak, Camera)
- If the customer is not using ScriptViewer, in order to fill the space vacated by the Miniviewer module, it is recommended that the CG List GUI be changed to **Wide** mode from the Display Settings tab of the CG List Settings dialog box.

CONFIGURATION NOTE 3

For customers with Konnect, a license must be generated using the new PVLICENSEGENERATOR.exe v6.0.0.2. This module should also be used for generating licenses for new Kayak customers.

CONFIGURATION NOTE 4

Beginning with Ignite 6.0.0.1 release, Audio Configurators have been given their own independent installers, and will drop in the MiscApps subfolder of the Ignite installation folder.

CONFIGURATION NOTE 5

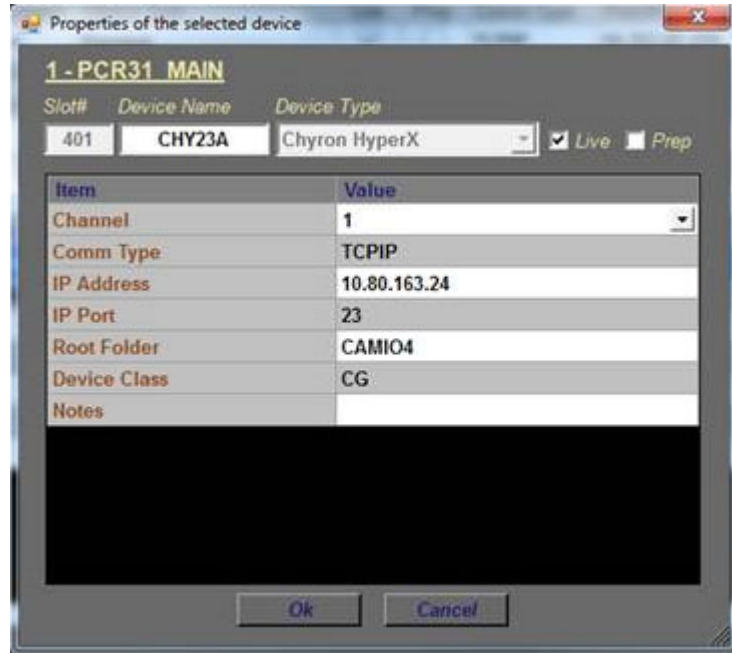
Timed Events is disabled by default. To enable Timed Events, check Timed Events check box during Ignite application installation wizard.

CONFIGURATION NOTE 6

Users with the latest Chyron HyperX driver or existing users with previous versions of the software suite must perform the following configuration in the Ignite device manager:

1. Launch the Ignite application.
2. On the Event Timeline module, select **Setup | Configuration and Device Setup**.

3. Select Chyron in the Devices Configuration screen and click **Edit**. The **Properties of the selected device** dialog appears.
4. Enter the properties of the Chyron CG device. The Root Folder value should be set to **CAMIO4** in this release.



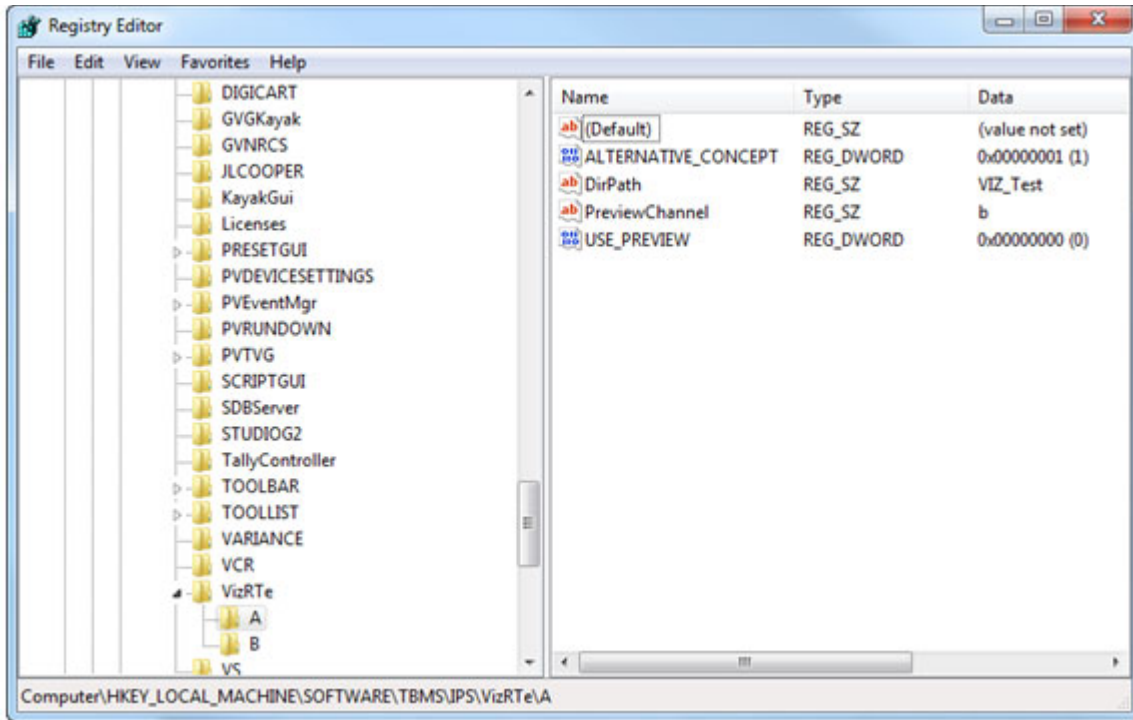
Note For users of CAMIO 3 or earlier, you can leave the Root Folder field blank by default or insert values depending on the version of Chyron software suite in use. Possible values for the root folder are CAMIO, CAMIO2, and CAMIO3.

5. Click **OK**.

CONFIGURATION NOTE 7

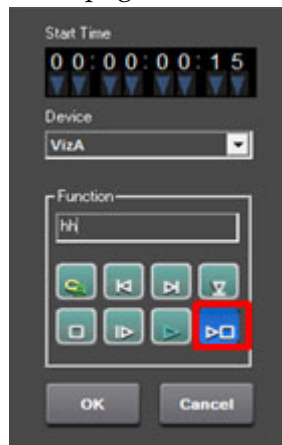
The support for VizRT Concept is disabled by default.

To enable it, add `ALTERNATIVE_CONCEPT` parameter to registry as shown below. Set it to 1 and then only start Ignite. This is applicable to every channel.



To insert the Concept into Ignite, do the following:

1. In the CG hotkeys window, enter the correct path for profile and showname: **<Profile>/<ShowName>**
2. Open the TME page, and select the preload icon as shown below:



3. Enter the concept name in the **Function** text box.

4. Code your TME icon as below:

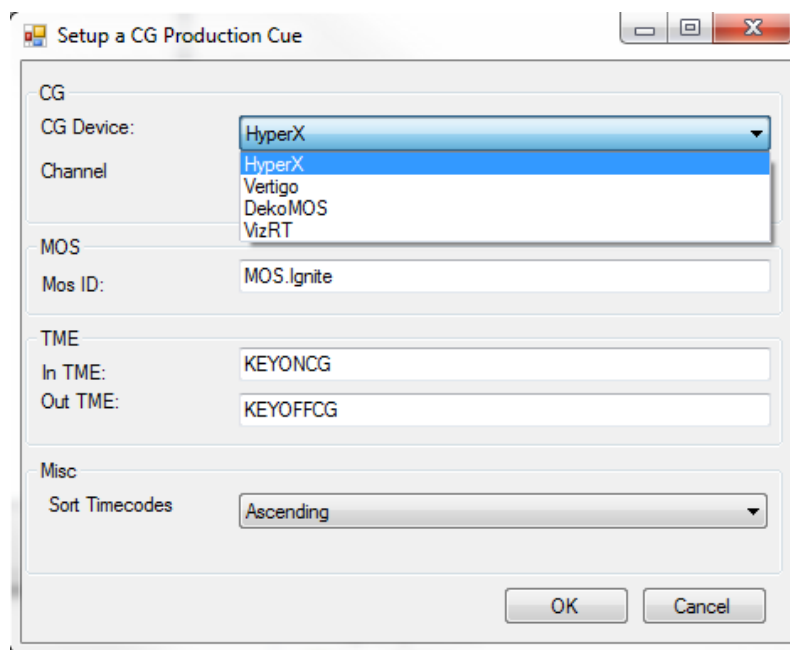


- a. The first icon from left is to change the concept.
- b. The middle icon is to load a CG.
- c. The last icon is to play a CG.

CONFIGURATION NOTE 8

To setup a CG production cue for VizRT, please do the following:

1. Go to *C:\Program Files\GrassValley\Ignite* and launch *IQConfigurator.exe* from the directory.
2. In the IQ Configurator, select **Tools | Production Cue Auto-generation** to open the Production Cue Auto Generation table.
3. Right-click on the table and select **Add New CG Entry** to launch the **Setup a CG Production Cue** window.



4. Select **VizRT** as the CG Device and configure the CG production cue for your operation.