



grass valley

A **BELDEN** BRAND

IGNITE

LIVE PRODUCTION CONTROL SYSTEM

Release Notes

Software Version 9.0

071896900
SEPTEMBER 2016

—

Copyright and Trademark Notice

Copyright © Grass Valley Canada. All rights reserved.

Belden, Belden Sending All the Right Signals, and the Belden logo are trademarks or registered trademarks of Belden, Inc. or its affiliated companies in the United States and other jurisdictions. Grass Valley is a trademark or registered trademark of Grass Valley Canada. Belden, Inc., Grass Valley Canada, and other parties may also have trademark rights in other terms used herein.

Grass Valley Web Site

The Grass Valley Web (<http://www.grassvalley.com/support>) site offers the following:

Online User Documentation — Current versions of product catalogs, brochures, data sheets, ordering guides, planning guides, manuals, and release notes in .pdf format can be downloaded.

FAQ Database — Solutions to problems and troubleshooting efforts can be found by searching our Frequently Asked Questions (FAQ) database.

Software Downloads — Download software updates, drivers, and patches.

Grass Valley Technical Support

For technical assistance, contact our international support center, at 1-800-547-8949 (US and Canada) or +1 530 478 4148.

To obtain a local phone number for the support center nearest you, please consult the Contact Us section of Grass Valley's web site.

An online form for e-mail contact is also available from the web site.

Recycling

Visit www.grassvalley.com for recycling information.

Contents

Ignite Release Notes	7
Introduction	7
Release Summary	7
New Features and/or Functionality	8
Ignite remote client	8
Ignite-X: The new vertical event playlist	8
Enhanced support for 16:9 monitors	9
Enhanced support for Grass Valley K-Frame	9
New requirement for Windows 64-bit Operating System	9
Compatibility	9
Hardware	9
Software	10
Installation and Configuration	11
Considerations	11
Hardware Installation	11
Software Installation	11
New Installation	11
Upgrade Installation	12
Configuration Notes	13

Ignite Release Notes

Introduction

This document describes compatibility, installation, and other information specific to Ignite Release 9.0 which is a major release of the Ignite Live Production Control System.

Note For a current list of supported/controlled devices, contact an authorized Grass Valley reseller or contact Grass Valley sales directly.

Release Summary

This release includes information for:

- *Ignite remote client on page 8*
- *Ignite-X: The new vertical event playlist on page 8*
- *Enhanced support for 16:9 monitors on page 9*
- *Enhanced support for Grass Valley K-Frame on page 9*
- *New requirement for Windows 64-bit Operating System on page 9*

New Features and/or Functionality

Ignite remote client

Ignite supports client server architecture for any Windows PC and Tablet application which enables:

- Simultaneous access of an IGNITE live production (Maximum of 3 clients).
- Easy distribution of important Ignite data to Engineering and News departments such as clip information, or which story will play next on the air.
- Helper mode for breaking news, election, and severe weather coverage. Ignite on remote clients can only update, advance, prep and take the show. Modification of events should be done on the Ignite server.



Ignite-X: The new vertical event playlist

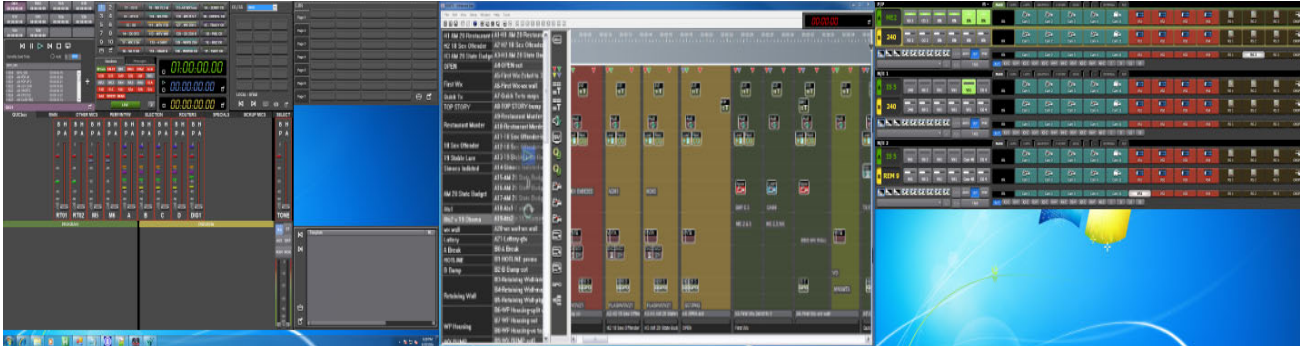
Ignite-X is the next generation vertically scrolling, icon based, playlist that enables users to quickly and easily filter the information displayed in the Ignite rundown or playlist.

Ignite-X can either be embedded in the Event Timeline Module, or installed separately on a remote client accessible anywhere as long as it is connected to the Ignite server.

The Ignite-X Playlist supports the ability to display side-by-side the text-based vertical list view, and the block view for sequence of events on the Timeline. This is beneficial for Directors and Producers to quickly monitor critical information just in one place.

Enhanced support for 16:9 monitors

Ignite application now supports and recommends display on 16:9 monitors. If you still need Ignite display on 4:3 monitors, screen settings on the registry must be changed manually. For details, refer to [CONFIGURATION NOTE 9](#) on page 17.



Enhanced support for Grass Valley K-Frame

Ignite now supports version 10.0.0 of Grass Valley K-Frame switchers.

New requirement for Windows 64-bit Operating System

Ignite now supports and requires Windows 64-bit OS to enable all of the features and enhancement afforded by 64-bit operating systems.

Compatibility

Hardware

This release requires hardware equipped with Windows 64-bit operating system.

Software

This Ignite Release 9.0 only functions with the Media Object Portal (MOP) and does not support the XMOS server in previous systems. If a customer is being upgraded from any version of Ignite prior to:

- 5.2.0.0, you must run the AlloyConversionUtilities found in the Ignite installation folder
- 5.1.1, you must convert the customer's TME & Macro library with the the IgniteTMEProcessor found in the Ignite installation folder

Refer to the release matrix in [Table 1](#)

Table 1. Release Matrix

Application	Version	Application	Version
ENPS Server	8.1.175	Yamaha Audio	1.35
ENPS Client	8.1.175	Lawo Audio	5.0.2.0PL3
iNEWS Server	5.2.0.27	Klotz Audio	1.3.5.006
iNEWS Client	5.2.0.21	SSL Audio	5.0/5
iNEWS MOS Gateway	4.1.0.9	Enco Audio Server	9.2.2.265
Katalyst	2.1.4	Chyron (Duet and HyperX)	8.0 (build 1558)
Kayenne Frame Firmware	4.2.2d01	Miranda Vertigo/Xplay	4.9.540.0
K-Frame Firmware	10.0.0	VizRT	2.12.19413
K-Frame Deployment Tool	10.0.0	Vadis	1.35.006
K-Frame Menu	10.0.0	Media Control	1.5.9.1
QUICBox Audio Firmware	1.19 1.11**	MOP	1.0.24
QUICBox Clip24 Firmware	1.09 1.07**	Ignite ActiveX	1.0.26
QUICBox Hardware Revision	1.11 1.21	Ignite Plugin	1.0.26
Klotz 888 Firmware	4.0.16	TME File Watcher	1.0.26
Klotz 880 Firmware	2.17.6	PortVision Plus	4.0.3
Klotz Audio Configurator	6.0.0.2	MOS	2.8.2
Elemental	2.3.1.22369	K2 Summit	9.6.4.2374
Comtrol Firmware	NSLINK-7.14 Bootloader-3.15	GV STRATUS	4.8.0.358
Aurora Playout / Assignment List Plugin	7.0.0.33	GV STRATUS Rundown (formerly known as Aurora Playout)	9.8.0.2

Installation and Configuration

Considerations

- Ignite 9.0 is not an update, but a full installation.
- Ignite 9.0 requires Microsoft .NET 4.6.1 and Microsoft Visual C++ Redistributable for VS 2015 Update 2.
- ScriptViewer is no longer sold with Ignite, but for upgrading customers, a corresponding ScriptViewer is available.
- With v9.0, desktop experience must be enabled otherwise graphics might be compromised.

Hardware Installation

Only qualified Grass Valley Service Engineers are authorized to install Ignite Live Production Control System Release 9.0 software. Contact your local Grass Valley representative, your Grass Valley Ignite Technical Service representative, or Grass Valley Support Center.

Software Installation

Only qualified Grass Valley Service Engineers are authorized to install Ignite Live Production Control System Release 9.0 software. Contact your local Grass Valley representative, your Grass Valley Ignite Technical Service representative, or Grass Valley Support Center.

Installation has two parts:

- MOP server
- Ignite

New Installation

1. Run the IgniteMOPInstaller.msi for 1.0.24 on the MOP server.
2. Run the Ignite 9.0.0 Installer.exe on the Ignite workstation.
3. Select the feature set from installer options (Audio, Switcher Type, etc.) and finish the installation.

Upgrade Installation

MOP Server Upgrade

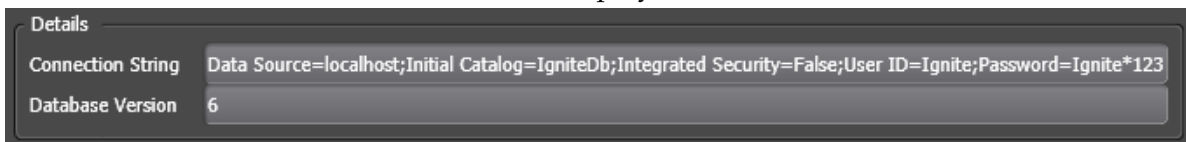
CAUTION It is imperative that you follow these instructions when UPGRADING to MOP Server 1.0.24 from a previous version.

Note This update requires more than just new software, but also has a database update component.

1. Stop all MOP services before the upgrade.
2. Manually uninstall MOP Server via Windows add/remove programs.
3. Run IgniteMOPInstaller.msi for 1.0.24 on the MOP server.
4. Launch the Ignite MOP Utility and select as below:
 - **Services > Start Services**
 - **Settings > Configure Database**
5. Ensure that the Database Version is 5 or less.

Note In the following step, the application might freeze for a few seconds, this is normal.

6. Under **Upgrade**, click **Upgrade Database**. When done, the:
 - Messages window displays **Upgrade complete**
 - Database Version displays **6**



Ignite Upgrade

Note If customer is being upgraded, and is using different audio, or a different switcher (i.e. going from Klotz to Calrec, or Kayak to Kayenne), after restoring setups, you will need to restore some registry settings manually. Refer to http://grassvalleyautomation.com/wiki/index.php?title=Ignite_Restore for more information.

If a customer is upgrading from any version of Ignite prior to:

- 5.2.0.0, you must run the AlloyConversionUtilities found in the Ignite installation folder
 - 5.1.1, you must convert the customer's TME & Macro library with the the IgniteTMEProcessor found in the Ignite installation folder
1. Backup the GrassValley folder and the TBMS registry.

2. Copy the Ignite_9.0.0_FullInstall folder to the C:\Software directory.
3. Run the Ignite 9.0.0 Installer.exe to uninstall previous version and backup configs.
4. Take note of the name of the folder created in the D:\IgniteBackups folder.
5. Run the Ignite 9.0.0 Installer.exe on the Ignite workstation.
6. Select feature set from installer options (Audio, Switcher Type, etc.) and finish installation.

Configuration Notes

CONFIGURATION NOTE 1

Note Always perform a backup of the entire TME library before running a conversion via IgniteTMEProcessor.

If the customer is being upgraded and has any TMEs that addressed the ScriptViewer to append scripts and/or load CGs from the CG list, the TMEs must be converted.

In most cases, this is just a single TME (LP.tmx, LS.tmx, or something similar) that is embedded but if the customer uses multiple versions of this file type, all must be converted. Conversion is done via the IgniteTMEProcessor.exe in the root Ignite folder.

CONFIGURATION NOTE 2

- If the customer is being upgraded and is not using ScriptViewer, or for any reason would prefer to not see the Miniviewer in the Ignite GUI, this must be modified in the registry.

```
HKEY_LOCAL_MACHINE\SOFTWARE\TBMS\IPS\SCRIPT-
GUI\MINIVIEWMODE
0 = No Miniviewer
1 = Miniviewer
```

- If the customer is not using ScriptViewer, it is recommended that the SV row in the timeline track be removed and replaced with another track (e.g. CG, Kayak, Camera)
- If the customer is not using ScriptViewer, in order to fill the space vacated by the Miniviewer module, it is recommended that the CG List GUI be changed to **Wide** mode from the Display Settings tab of the CG List Settings dialog box.

CONFIGURATION NOTE 3

For customers with Konnect, a license must be generated using the new PVLICENSEGENERATOR.exe v6.0.0.2. This module should also be used for generating licenses for new Kayak customers.

CONFIGURATION NOTE 4

Beginning with Ignite 6.0.0.1 release, Audio Configurators have been given their own independent installers, and will drop in the MiscApps subfolder of the Ignite installation folder.

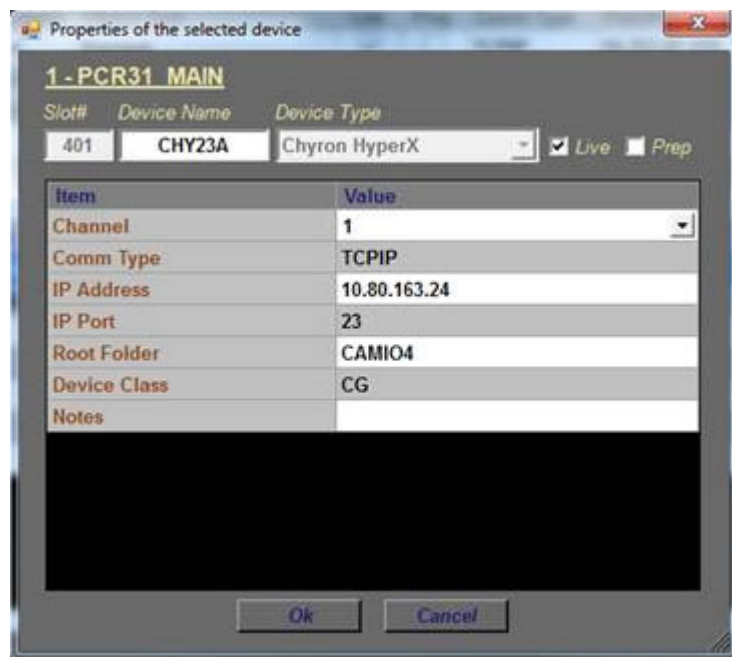
CONFIGURATION NOTE 5

Timed Events is disabled by default. To enable Timed Events, check Timed Events check box during Ignite application installation wizard.

CONFIGURATION NOTE 6

Users with the latest Chyron HyperX driver or existing users with previous versions of the software suite must perform the following configuration in the Ignite device manager:

1. Launch the Ignite application.
2. On the Event Timeline module, select **Setup | Configuration and Device Setup**.
3. Select Chyron in the Devices Configuration screen and click **Edit**.
4. Enter the properties of the Chyron CG device. The Root Folder value should be set to **CAMIO4** in this release.



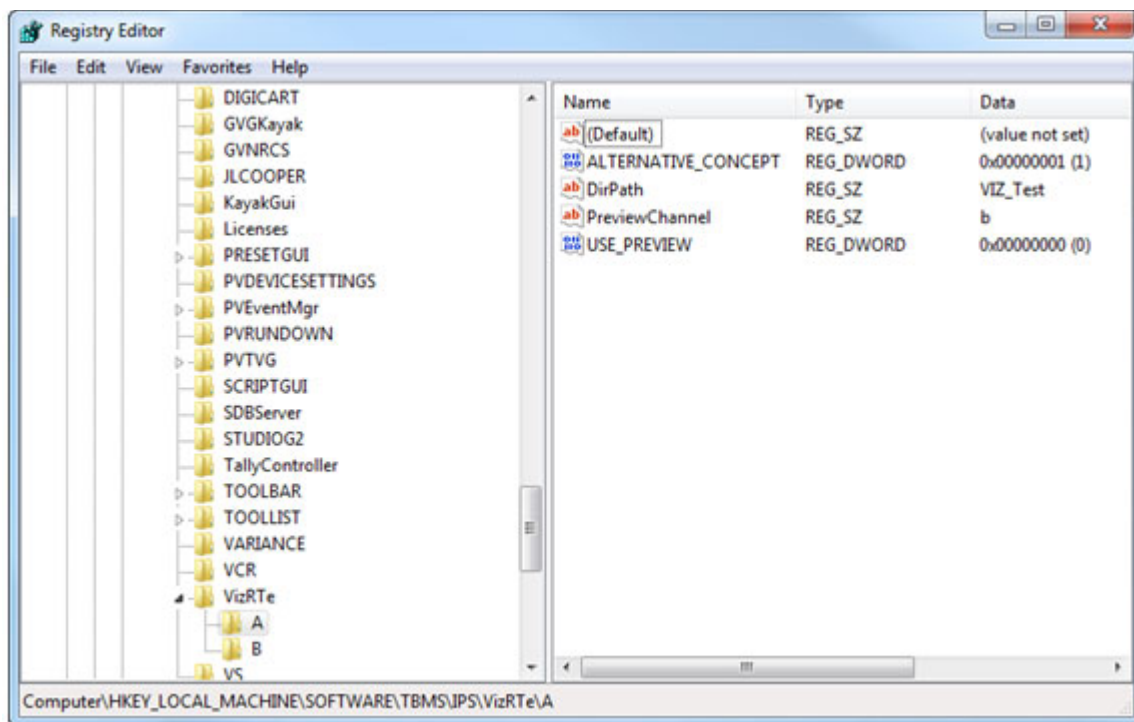
Note For users of CAMIO 3 or earlier, you can leave the Root Folder field blank by default or insert values depending on the version of Chyron software suite in use. Possible values for the root folder are CAMIO, CAMIO2, and CAMIO3.

5. Click OK.

CONFIGURATION NOTE 7

The support for VizRT Concept is disabled by default.

To enable it, add ALTERNATIVE_CONCEPT parameter to registry as shown below. Set it to 1 and then only start Ignite. This is applicable to every channel.



To insert the Concept into Ignite, do the following:

1. In the CG hotkeys window, enter the correct path for profile and showname: **<Profile>/<ShowName>**

2. Open the TME page, and select the preload icon as shown below:



3. Enter the concept name in the **Function** text box.
4. Code your TME icon as below:



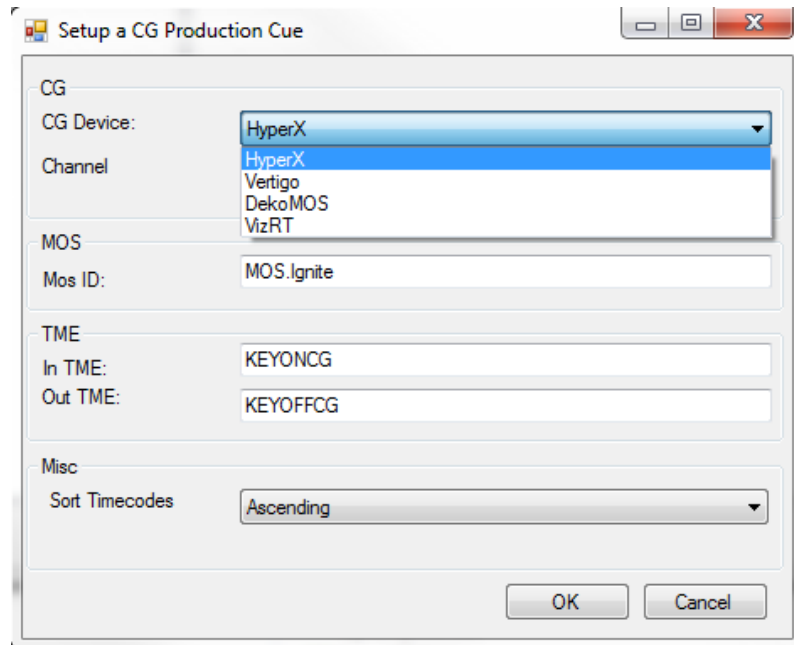
- a. The first icon from left is to change the concept.
- b. The middle icon is to load a CG.
- c. The last icon is to play a CG.

CONFIGURATION NOTE 8

To setup a CG production cue for VizRT, please do the following:

1. Go to *C:\Program Files\GrassValley\Ignite* and launch *IQConfigurator.exe* from the directory.
2. In the IQ Configurator, select **Tools | Production Cue Auto-generation** to open the Production Cue Auto Generation table.

- Right-click on the table and select **Add New CG Entry** to launch the **Setup a CG Production Cue** window.



- Select **VizRT** as the CG Device and configure the CG production cue for your operation.

CONFIGURATION NOTE 9

In this Ignite 9.0 release, the support of tri-monitor display for Ignite application is on 16:9 monitors by default.

For customers with 4:3 monitors, screen setting values must be manually modified in the registry.



- For KONNECT screen, edit values as shown in the location below:

```
HKEY_LOCAL_MACHINE\SOFTWARE [\Wow6432Node] \TBMS\IPS\Switcher
```

(Default)	REG_SZ	(value not set)
HEIGHT	REG_DWORD	0x00000438 (1080)
LEFT	REG_DWORD	0x00000a00 (2560)
TOP	REG_DWORD	0x00000000 (0)
WIDTH	REG_DWORD	0x00000500 (1280)

- For Ignite middle screen, edit values as shown in the location below:

HKEY_LOCAL_MACHINE\SOFTWARE [\Wow6432Node] \TBMS\IPS\STUDIOG2

 LBN_DISPLAY_LEFT	REG_DWORD	0x00000280 (640)
 LBN_DISPLAY_TOP	REG_DWORD	0x000002bc (700)