

Release Notes for Ignite v11.1.3

Bug Fixes

[IGN-8602] Device selection bar in Event Builder may not be displayed at the right place when a device with look ahead is added in timeline column

- Event Builder now always display the Device selection bar at the right place after a device is added.

[IGN-8746] Virtual Sources for Klotz Audio mixer are not displayed in Event Builder

- Event Builder now shows the Virtual sources for Klotz Audio mixer.

[IGN-8985] A TME may take a long time to prep after launching Ignite and importing a Rundown or Macro

- Ignite has now been optimized to handle the situations where the above issue may get triggered. Those situations include Ignite configuration file changes, and reading from very large configuration files. Ignite now copes efficiently with those situations.

New Features

[IGN-8794] Orad CG support in Event Builder

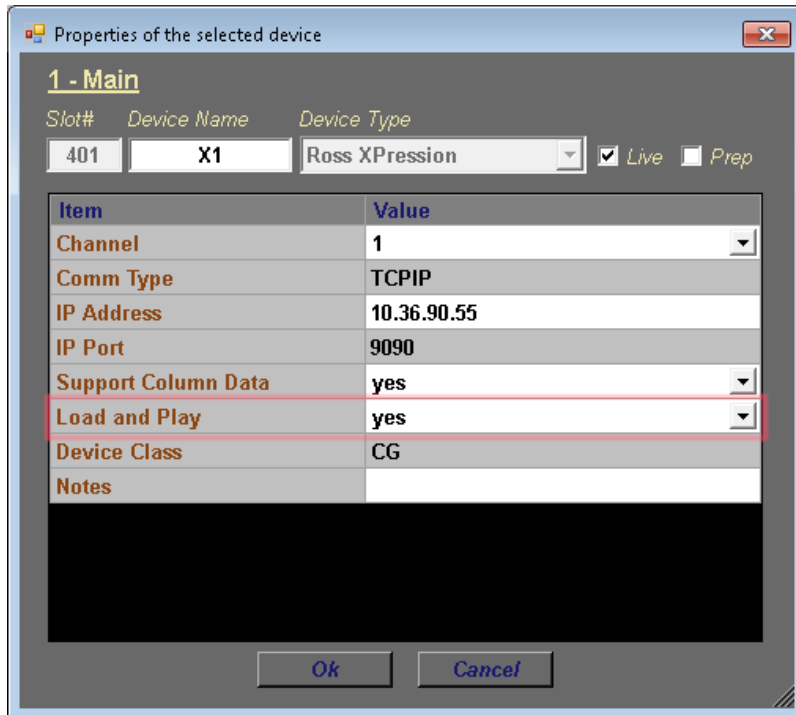
- Event Builder now supports the Orad CG device.

[IGN-6981] The Load and Play option has been added to the Ross Xpression CG.

- The **Load And Play** option has been added to Ross Xpression devices. Previously Load And Play was always enabled, and this remains the default. If Load And Play is disabled, Ross Xpression pages are sent to the preview display before being taken to air. Please see the following for more information about this feature.

Configuring Load and Play

Load and Play is configured in the Device Configuration dialog.



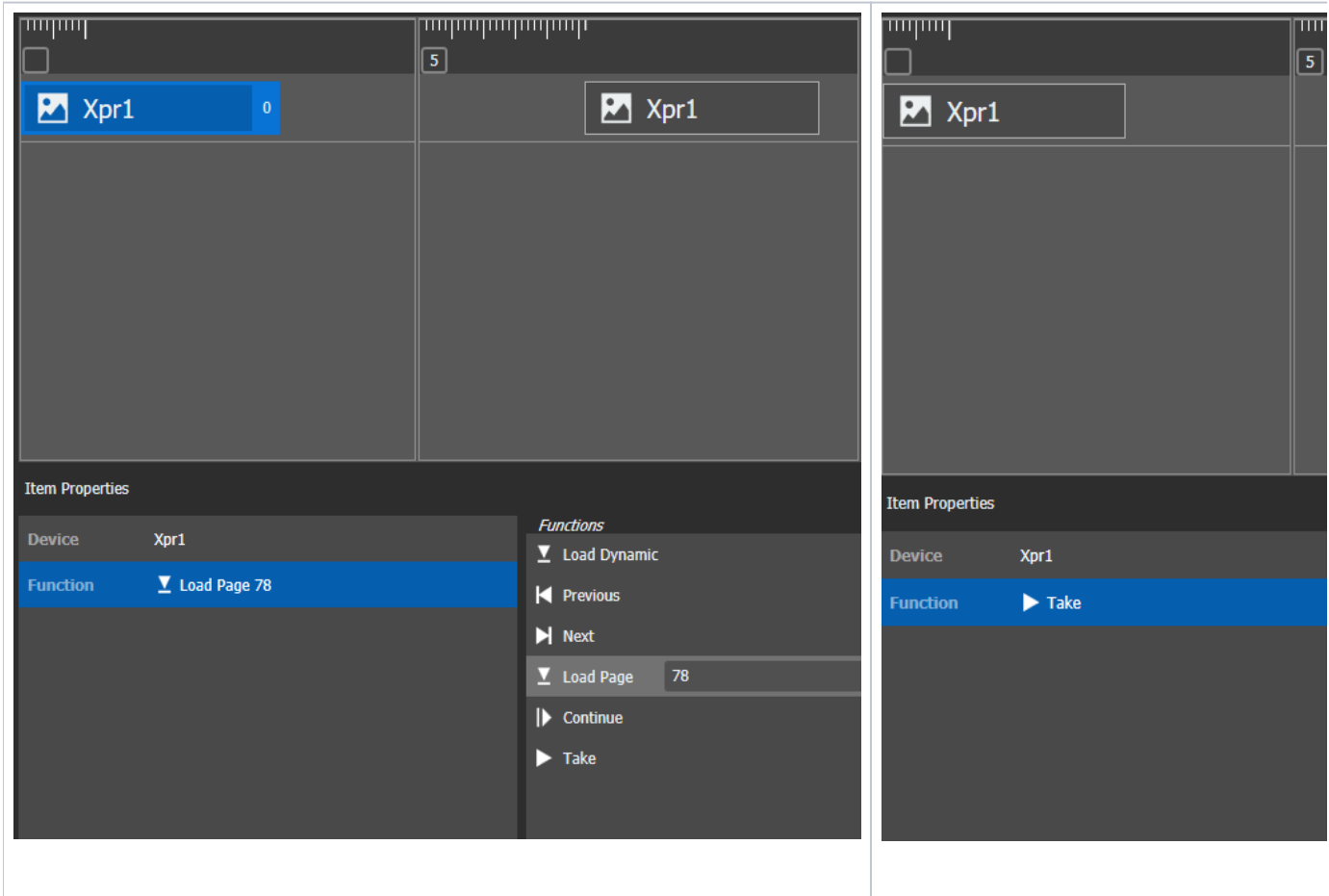
Using Ignite when Load and Play is Disabled

Events

When Load and Play is disabled, iEvents that display Ross Xpression items on air are constructed using the following two items:

- a Ross Xpression item that uses `LoadDynamic` or `LoadPage` to preview a page is added to the Stack Column
- a Ross Xpression item that uses `Take` to take the page on air is added to the Timeline Column

An example is shown below:

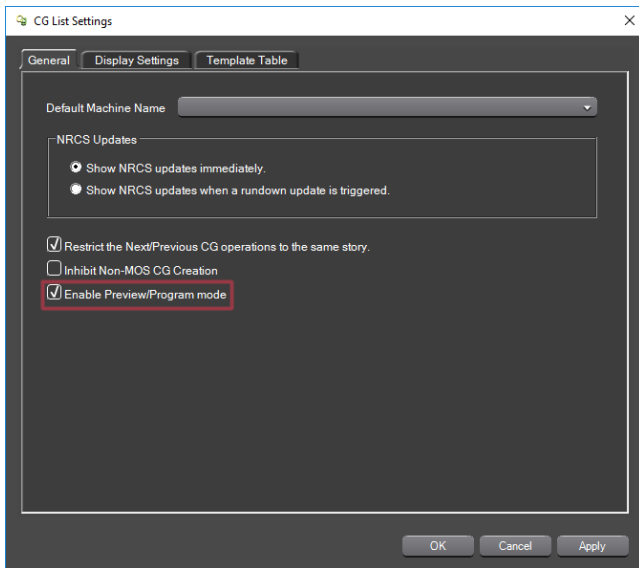


- When the first Ross Xpression item in the Stack Column is played, it shows the specified page in the preview display. In this example, this is done by using the `Load Page` function and specifying the page number.
- The playout of the playlist will pause when all items in the Stack Column have been played. At this point, the loaded page is displayed in the preview display.
- When the second Ross Xpression item in the Timeline Column is played, it takes the last previewed page. This is done by using the `Take` function.

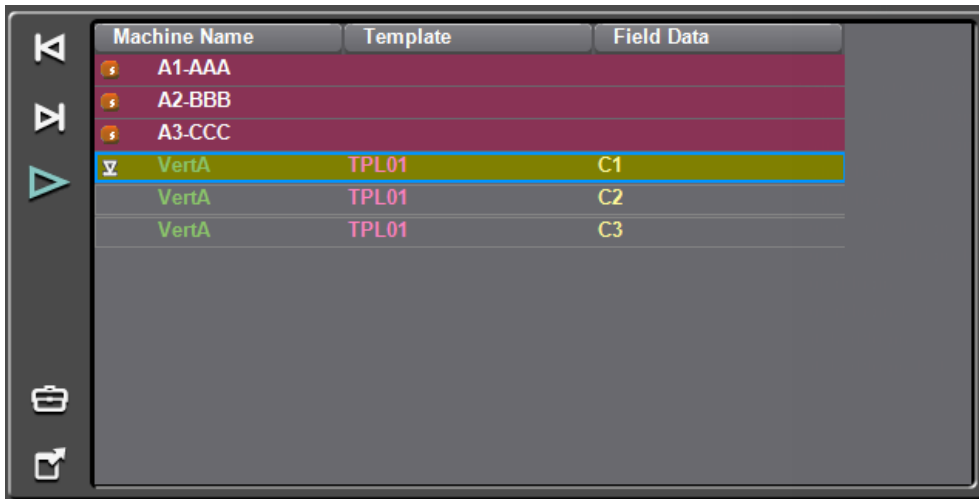
The `Previous` and `Next` functions continue to send the previous or next page directly to air without previewing it.

CG List

The CG List now supports Preview/Program mode, which is enabled by opening the settings dialog and checking `Enable Preview/Program mode`.



Once Preview/Program mode is enabled in the CG List, a Take button becomes available.



- selecting a page, either by clicking on it or using the previous/next buttons will preview the page
- clicking on the Take button will take the previewed page to air

If the CG List is not in Program/Preview mode, double-clicking on a page in the CG List commands will continue to take the page directly to air without previewing