



**Grass Valley**  
WE LOVE LIVE

# IGNITE V11.9.6

LIVE PRODUCTION CONTROL SYSTEM

## Release Notes

13-06131-010 AL

2024-05-06

[www.grassvalley.com](http://www.grassvalley.com)

## Patent Information

This product may be protected by one or more patents.

For further information, please visit: [www.grassvalley.com/patents/](http://www.grassvalley.com/patents/)

## Copyright and Trademark Notice

Grass Valley®, GV® and the Grass Valley logo and/or any of the Grass Valley products listed in this document are trademarks or registered trademarks of GVBB Holdings SARL, Grass Valley USA, LLC, or one of its affiliates or subsidiaries. All other intellectual property rights are owned by GVBB Holdings SARL, Grass Valley USA, LLC, or one of its affiliates or subsidiaries. All third party intellectual property rights (including logos or icons) remain the property of their respective owners.

Copyright © 2019 - 2024 GVBB Holdings SARL and Grass Valley USA, LLC. All rights reserved.

Specifications are subject to change without notice.

## Terms and Conditions

Please read the following terms and conditions carefully. By using Ignite documentation, you agree to the following terms and conditions.

Grass Valley hereby grants permission and license to owners of Ignite to use their product manuals for their own internal business use. Manuals for Grass Valley products may not be reproduced or transmitted in any form or by any means, electronic or mechanical, including photocopying and recording, for any purpose unless specifically authorized in writing by Grass Valley.

A Grass Valley manual may have been revised to reflect changes made to the product during its manufacturing life. Thus, different versions of a manual may exist for any given product. Care should be taken to ensure that one obtains the proper manual version for a specific product serial number.

Information in this document is subject to change without notice and does not represent a commitment on the part of Grass Valley.

Warranty information is available from the Legal Terms and Conditions section of Grass Valley's website ([www.grassvalley.com](http://www.grassvalley.com)).

Title                   IGNITE V11.9.6 - Release Notes

Revision               2024-05-06, 14:28

# toc

## Table of Contents

Introduction.....	1
New Features, Enhancements, and Bug Fixes .....	1
Ignite Version 11.9.6 .....	1
Bug Fixes .....	1
Ignite Version 11.9.5 .....	1
New Features.....	2
Bug Fixes .....	2
Ignite Version 11.9.4 .....	2
Bug Fix .....	2
Ignite Version 11.9.3 .....	2
New Features.....	2
Ignite Version 11.9.2 .....	3
Bug Fixes .....	3
Ignite Version 11.9.1 .....	3
Bug Fixes .....	3
Ignite Version 11.9.0 .....	4
New Features.....	4
Bug Fixes .....	5
Configuring Wheatstone Mix-Minus.....	6
Ignite support for Multiviewer Kaleido Device .....	9
Create Count Up Timecode controls.....	10
Create SCT Timecode controls.....	11
Create SCT Clip Name Text .....	12
Setup Kaleido Multiviewer device in Ignite Device Configuration Manager.....	15
Ignite Clocks.....	16
SCT Clock.....	17
Compatibility.....	18
Hardware .....	18
Software .....	18
Installation and Configuration .....	18
Considerations .....	18
Hardware Installation.....	18
Software Installation.....	18
Open Source Software Information .....	19
Apache .....	19
Microsoft Public License .....	19
MIT .....	21
Mozilla.....	21
NSubstitute .....	21
Contact Us .....	24

# IGNITE Release Notes

## Introduction

This document describes new features, modifications, and other information specific to Ignite.

Release 11.9.6 is a maintenance release of the Ignite Live Production Control System.



### Note

With the release of Ignite software version 11.8.5 and onwards, the Flexera License is no longer required.

---

## New Features, Enhancements, and Bug Fixes

### Ignite Version 11.9.6

#### Bug Fixes

- [Ref. #IGN-12376] **Tascam delayed playout**  
Tascam Playout now no longer experiences a 2-seconds delay between stop and play.
- [Ref. #IGN-12343] **Multiple restarts required to update Vinten Shot List**  
The update process for Vinten Shot List in Ignite Client has been improved.

### Ignite Version 11.9.5

#### New Features

- [Ref. #IGN-12338] **Added the ability to specify MOS ObjType within an EventBuilder: Support in Base Event**  
Users are now able to define the logic for dynamic CG MOS item allocation.
- [Ref. #IGN-12344] **Added the ability to specify MOS ObjType within an EventBuilder: Support in Option**  
Users are now able to input the MOS ObjType inside an Event using Event Option and Shared Option.

- [Ref. #IGN-12340] **Enhanced the capability to allocate dynamic CG MOS items with consideration of MOS ObjType: Support in Base Event**  
Users are now able to input the MOS ObjType inside an Event using EventBuilder.
- [Ref. #IGN-12346] **Enhanced capability to allocate dynamic CG MOS items with consideration of MOS ObjType: Support in Event Option**  
Users are now able to select the MOS ObjType Event Option in Playlist Persistent Template and see the options reflected correctly in Timeline.

### Bug Fixes

- [Ref. #IGN-12348] **Playlist intermittently moving to top of rundown following rundown update**  
Resolved an issue where the playlist was intermittently moving to the top of the rundown following a rundown update. Playlists will no longer exhibit this behavior.
- [Ref. #IGN-12353] **User experiencing staggered IgniteX playlist after rundown update**  
Implemented a fix to enhance the loading speed of Ignite Rundown updates. Users will no longer experience a staggered IgniteX playlist after a rundown update.

## Ignite Version 11.9.4

### Bug Fix

- [Ref. #IGN-12335] **Upgrade to Ignite version 11.9.3 triggering 'Take All Sources Off' for events**  
Playing an audio event will no longer activate 'Take All Sources Off' automatically for the event.

## Ignite Version 11.9.3

### New Features

- [Ref. #IGN-11658] **Add ability to control Wheatstone mix-minus audio busses**  
Ignite now has the ability to control Wheatstone mix-minus audio busses. For more information, see [Configuring Wheatstone Mix-Minus](#), on page 6.
- [Ref. #IGN-12169] **Restrict MOP Gateway modification for user**  
Ignite now restricts the user from using Up and Down arrows when Import Rundowns window is active.
- [Ref. #IGN-12308] **Support multiple CG MOS IDs**  
Ignite now supports multiple CG MOS IDs.

- [Ref. #IGN-12306] **Optimized Playlist update behavior in Ignite**  
Ignite now enables play-head to always go-to the end of the last known executed event after a Playlist update is triggered.
- [Ref. #IGN-12327] **Expansion of mix-minus busses in Wheatstone up to 16**  
Ignite has the ability to support maximum of 16 mix-minus audio busses in Wheatstone.

## Ignite Version 11.9.2

### Bug Fixes

- [Ref. #IGN-12273] **Resolved issue of Synchronizer pushing unchecked items**  
The Synchronizer will now correctly push only the checked items, excluding the unchecked items.
- [Ref. #IGN-12277] **Fixed triggering of yellow clock by Clock device in Event**  
The Clock device in Event will now properly trigger the yellow clock when the Clock Mode is set to 1.
- [Ref. #IGN-12293] **Rectified malformation of sequential events after 11.9 Upgrade**  
Sequential events will no longer become malformed after upgrading to version 11.9.
- [Ref. #IGN-12298] **Resolved multiple cue commands and timeout errors from DBI servers when loading or playing videos**  
Ignite will no longer send multiple cue commands while receiving timeout errors when loading or playing videos.

## Ignite Version 11.9.1

### Bug Fixes

- [Ref. #IGN-12162] **Synchronization failure caused by Delete Fail in TmeData**  
Synchronizer will now successfully import the EventLibrary on the receiving system.
- [Ref. #IGN-12235] **Elimination of random Sony Thumbnails after HATMOS conversion**  
After the HATMOS conversion, there will be no more occurrences of random Sony Thumbnails when playing the rundown.
- [Ref. #IGN-12236] **Resolved issue of Tascam affecting SCT**  
Playing Tascam events on the Timeline will no longer interrupt the countdown timer of a previously played event.

## Ignite Version 11.9.0

### New Features

- [Ref. #IGN-12137] **Added the ability to configure Kaleido device in Device Configuration to populate the Ignite clock information**  
Kaleido device can now be configured in Ignite Device Configuration to populate the Ignite clock information. For more information, see [Setup Kaleido Multiviewer device in Ignite Device Configuration Manager](#), on page 15.
- [Ref. #IGN-12139] **Added the ability to connect to Kaleido and display the connection status in Device Manager**  
Ignite can now connect to the Kaleido device and display the connection status in Device Manager.
- [Ref. #IGN-12138] **Added the ability to set logging level for Kaleido driver in Ignite**  
Ignite can now set the logging level for Kaleido driver.
- [Ref. #IGN-12141 / #IGN-12142 / #IGN-12143] **Ignite displays Show Clock (green), Event clock (yellow) and Manual Clock (blue) in Kaleido Multiviewer**  
Ignite now displays Show Clock (green), Event clock (yellow) and Manual Clock (Blue) in Kaleido Multiviewer. See [Ignite Clocks](#), on page 16 for more information.
- [Ref. #IGN-12140] **Kaleido driver shows the Ignite Server Count Down Timer**  
User is now able to view the Server Count Down Timer in Kaleido Multivier counting up or down based on the count mode setting in Count Down Timer Configuration. See [SCT Clock](#), on page 17 for more information.
- [Ref. #IGN-12144] **Display current Cue/Playing clip name in Kaleido Multiviewer**  
The current Cue/Playing clip will be displayed in Kaleido Multiviewer.
- [Ref. #IGN-12175] **Auto Channel Pool to support Dual-Channel Audio**  
User can now configure Dual-Channel Audio in the Auto Channel Pool by using Ignite IQ Template Manager.
- [Ref. #IGN-12165] **Ignite Plugin is now compatible with non-IE Windows environments**  
The user now has the option to install and access the latest version of Ignite Plugin on Windows operating system other than Internet Explorer.
- [Ref. #IGN-10352] **Added Delay item to Timeline column in Event Builder**  
Delay item can now be added to non-embedded Timeline column in Event Builder.

## Bug Fixes

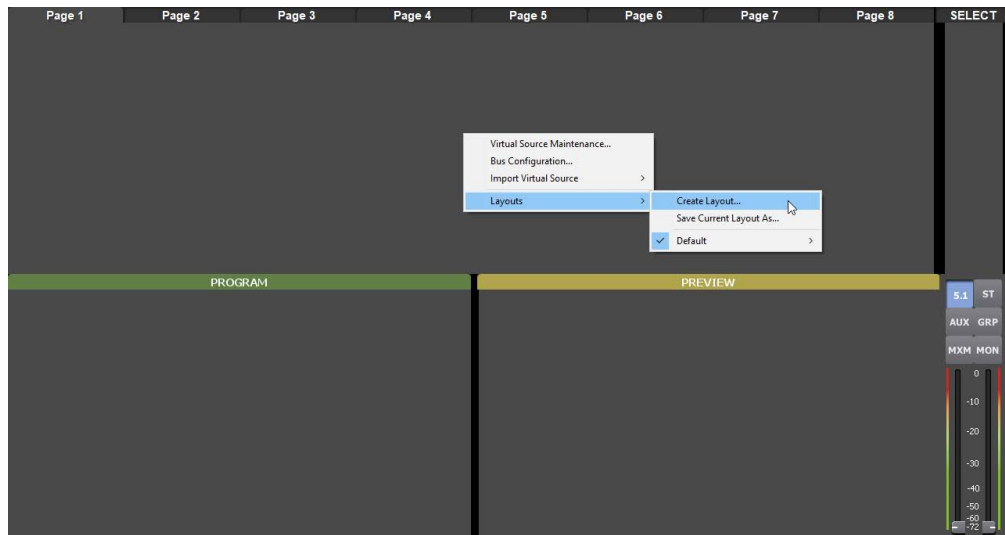
- [Ref. #IGN-12184] **Router properties losing crosspoints within event option**  
Router properties no longer lose crosspoints within event option after editing and saving shared options.
- [Ref. #IGN-12193] **Lawo's virtual source did not track**  
Lawo snapshots will now load and track correctly for each event played in Timeline.



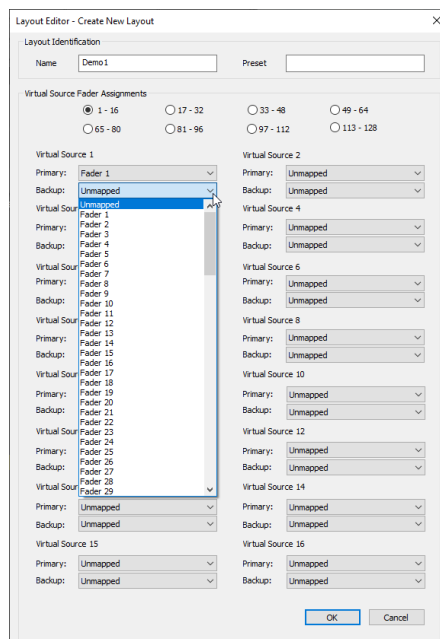
## Configuring Wheatstone Mix-Minus

Ignite v11.9.3 has implemented a new option that allows control and configuration of Wheatstone mix-minus via the Ignite interface.

- 1 Start by creating a new layout:
- 2 Click on **Layouts > Create Layout...**

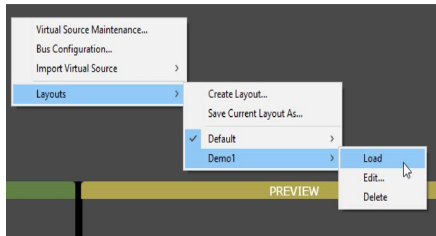


- 3 Enter the name for your new layout, and configure the virtual sources as needed. Click **OK** once you are done.
- 4 Each virtual source can be linked to one primary and one backup fader.  
For example, by linking virtual source 1 to fader 5, all virtual source 1 commands will be sent over to fader 5 over at Wheatstone.



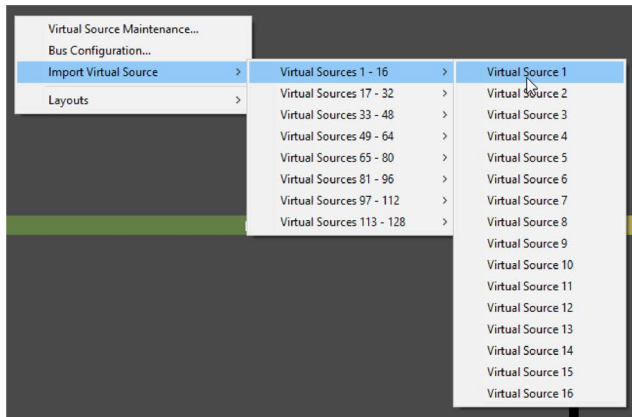
5 Load the layout you just created:

Click on **Layouts** > **[Name of the new layout]** > **Load**

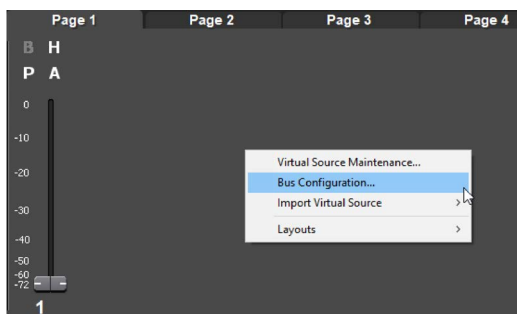


6 Import the virtual sources as required:

Click on **Import Virtual Source**, and choose the required virtual source.

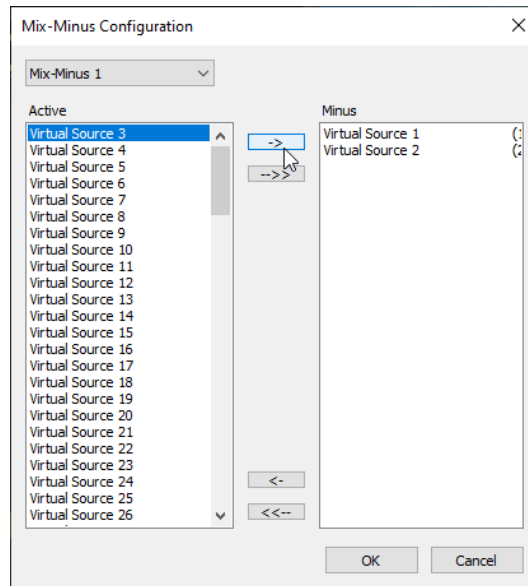


7 To configure mix-minus, navigate to **Bus Configuration...**



8 The Mix-Minus Configuration window will appear. Here you can configure the state of each mix-minus.

By default, all mix-minuses are set to 'Active'!



Note that all mix-minuses status are only applied when the corresponding fader is turned on.

For example:

For virtual source 1, set mix-minuses 1, 2 and 3 to 'Active' and mix-minus 4 to 'Minus'.

When the virtual source 1 fader is turned on, all mix-minuses, excluding 4, will be activated.

When virtual source 1 fader is turned off, all mix-minuses will be deactivated.

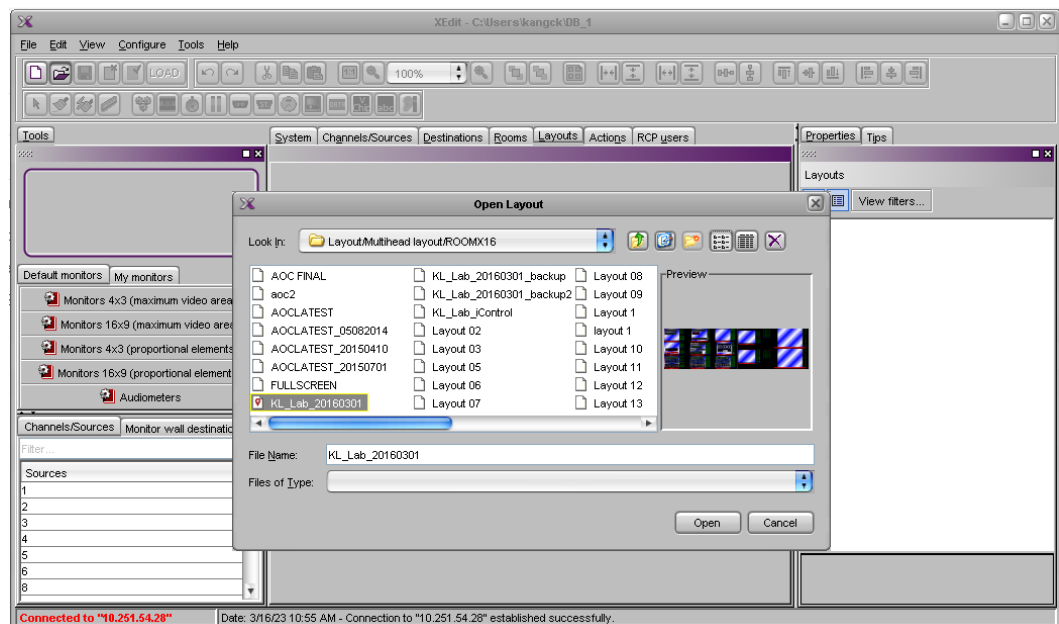
## Ignite support for Multiviewer Kaleido Device

The following topics provide more information on Multiviewer Kaleido Device:

- [Multiviewer Kaleido setup](#), on page 9
- [Create Count Up Timecode controls](#), on page 10
- [Create SCT Timecode controls](#), on page 11
- [Create SCT Clip Name Text](#), on page 12
- [Setup Kaleido Multiviewer device in Ignite Device Configuration Manager](#), on page 15
- [Ignite Clocks](#), on page 16
- [SCT Clock](#), on page 17

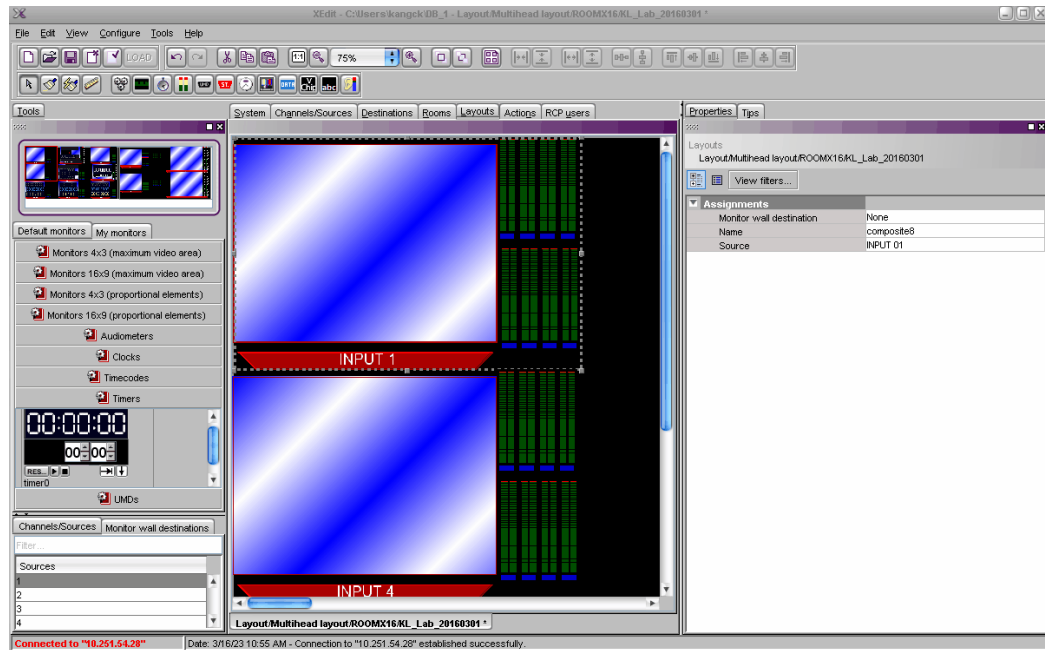
### Multiviewer Kaleido setup

- 1 Run the Kaleido X-Edit application.
- 2 Navigate to **Configure > Connect**. Enter the IP address of the Kaleido Multiviewer device and establish a connection.
- 3 Select Layout tab and open the selected layout.

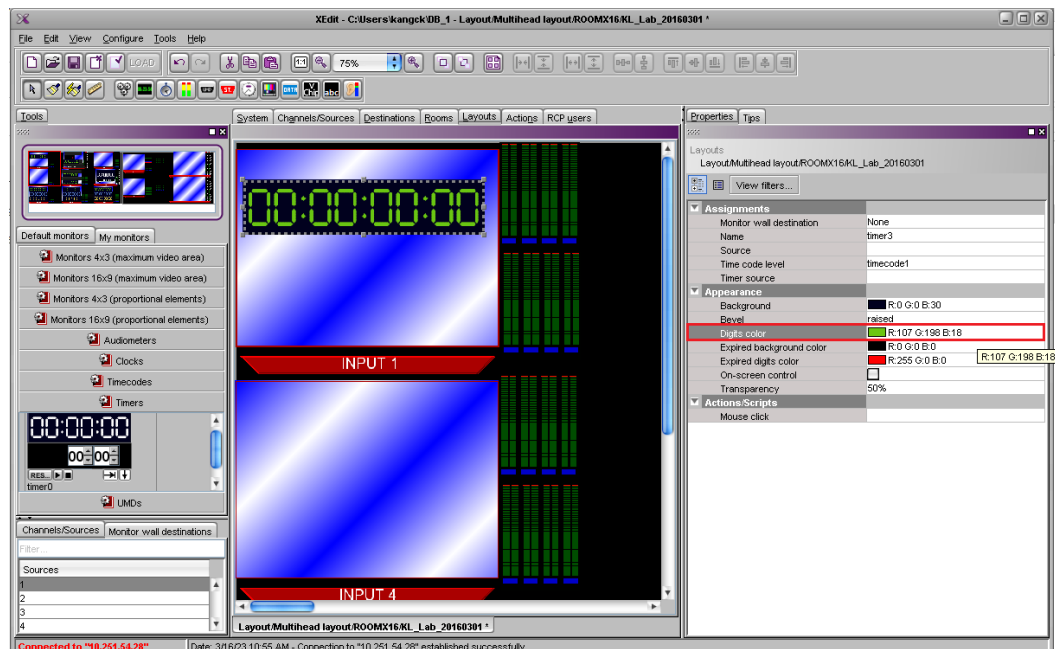


## Create Count Up Timecode controls

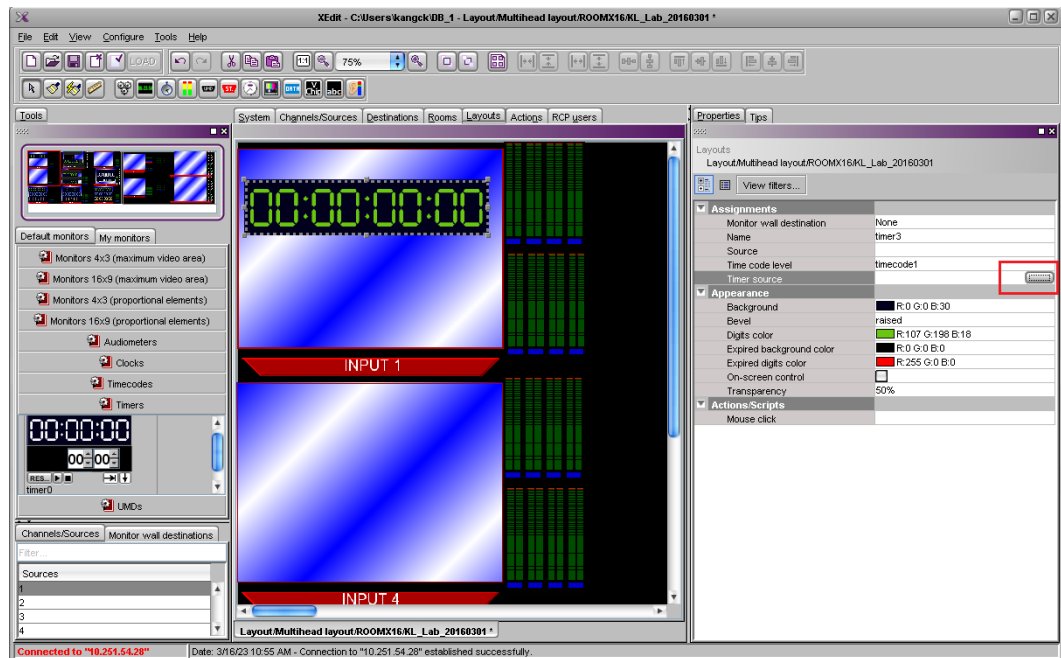
1. Drag a Timer control into the layout monitor.



2. In the Properties tab, change the **Digits colour** to green.

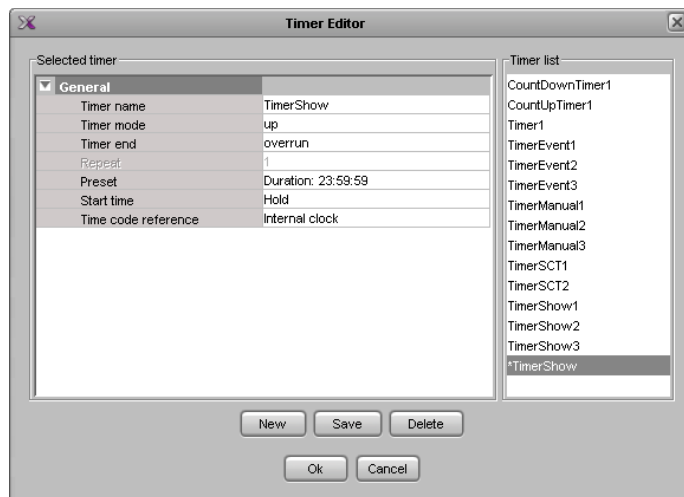


3 Click the **Timer source** button to open Timer Editor dialog.



4 On the Timer Editor, click on **New** button to create a new Timer. Set the Show timer properties, then press **Save** and **OK** button.

5 Change the name of the timer to TimerShow.



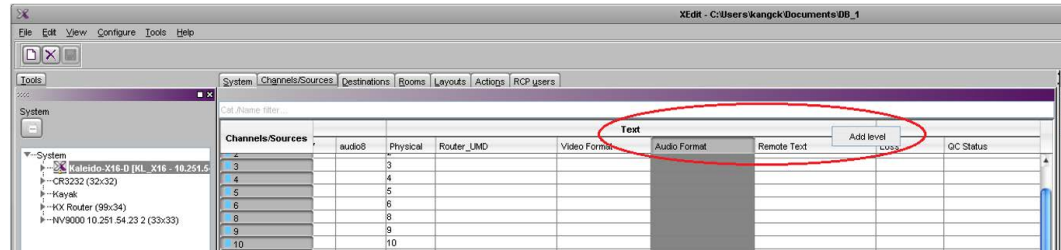
Repeat the same steps to create timer for **TimerEvent** and **TimerManual**.

### Create SCT Timecode controls

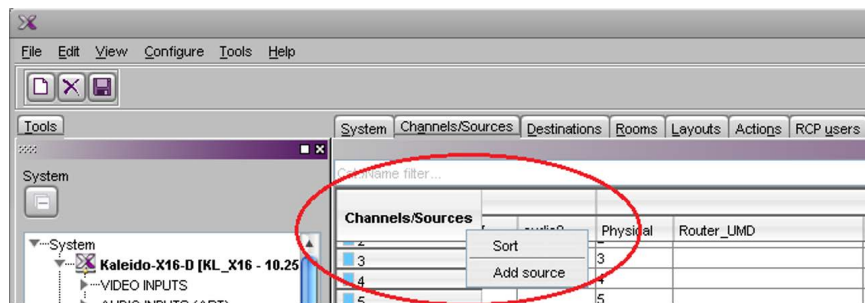
Create timer for **TimerSCT** using the same steps as [Create Count Up Timecode controls](#), on page 10.

## Create SCT Clip Name Text

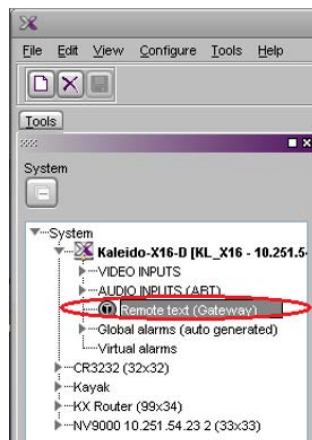
- 1 Select the **Channel/Sources** tab, then right-click on Text column and select **Add level**. Then rename new added column "Remote Text"



- 2 Right-click on **Channels/Sources** tab and select **Add source**. The newly added source will be named "Channel1".



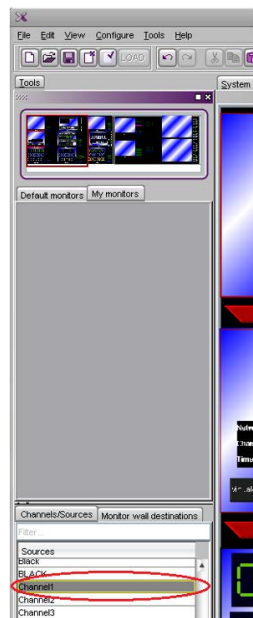
- 3 Drag **Remote text (Gateway)** and drop it onto the Remote Text column for Channel1. Simply set any address (ID).



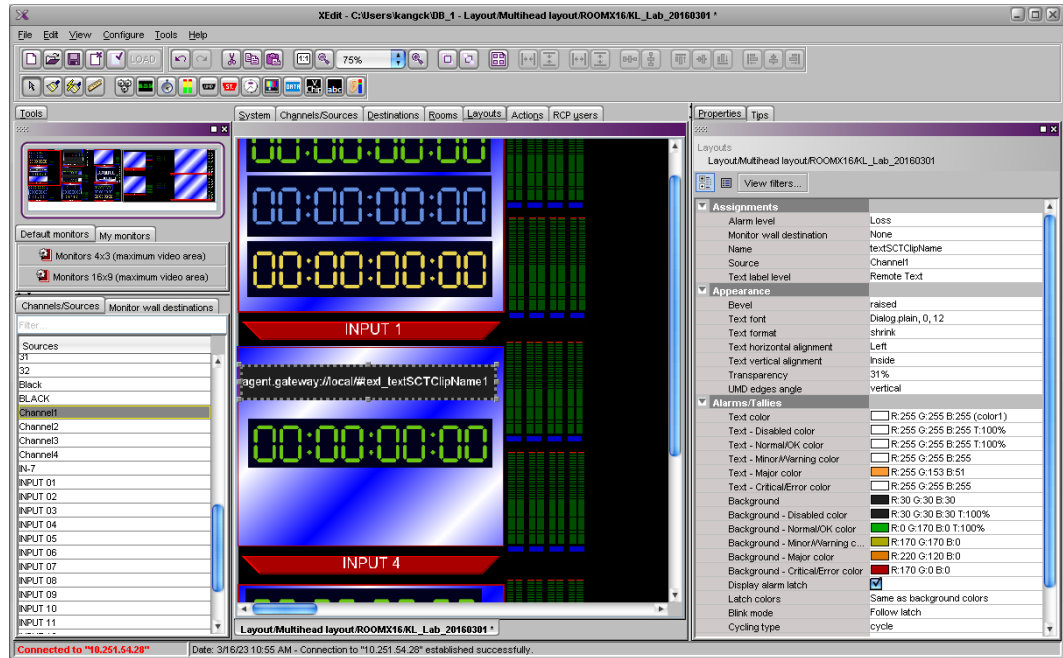
New Features, Enhancements, and Bug Fixes  
 Ignite support for Multiviewer Kaleido Device

Channels/Sources	Router_LMD	Video Format	Audio Format	Remote Text
4				
5				
6				
8				
9				
10				
11				
12				
13				
14				
15				
16				
17				
18				
19				
20				
21				
22				
23				
24				
25				
26				
27				
28				
29				
30				
31				
32				
Black				
BLACK				
IN-7				
INPUT 01		01 Video format text	01 Left-channel format	01 AFDWSS video 1 format 0
INPUT 02		02 Video format text	02 Left-channel format	02 AFDWSS video 2 format 0
INPUT 03		03 Video format text	03 Left-channel format	03 AFDWSS video 3 format 0
INPUT 04		04 Video format text	04 Left-channel format	04 AFDWSS video 4 format 0
INPUT 05		05 Video format text	05 Left-channel format	05 AFDWSS video 5 format 0
INPUT 06		06 Video format text	06 Left-channel format	06 AFDWSS video 6 format 0
INPUT 07		07 Video format text	07 Left-channel format	07 AFDWSS video 7 format 0
INPUT 08		08 Video format text	08 Left-channel format	08 AFDWSS video 8 format 0
INPUT 09		09 Video format text	09 Left-channel format	09 AFDWSS video 9 format 0
INPUT 10		10 Video format text	10 Left-channel format	10 AFDWSS video 10 format 1
INPUT 11		11 Video format text	11 Left-channel format	11 AFDWSS video 11 format 1
INPUT 12		12 Video format text	12 Left-channel format	12 AFDWSS video 12 format 1
INPUT 13		13 Video format text	13 Left-channel format	13 AFDWSS video 13 format 1
INPUT 14		14 Video format text	14 Left-channel format	14 AFDWSS video 14 format 1
INPUT 15		15 Video format text	15 Left-channel format	15 AFDWSS video 15 format 1
INPUT 16	IV9000 10.251.54.23 2ICR3...	16 Video format text	16 Left-channel format	16 AFDWSS video 16 format 1
Time	R3232Level 0 - Label of sr...			
Channel1				Gateway text textSCTClipNa

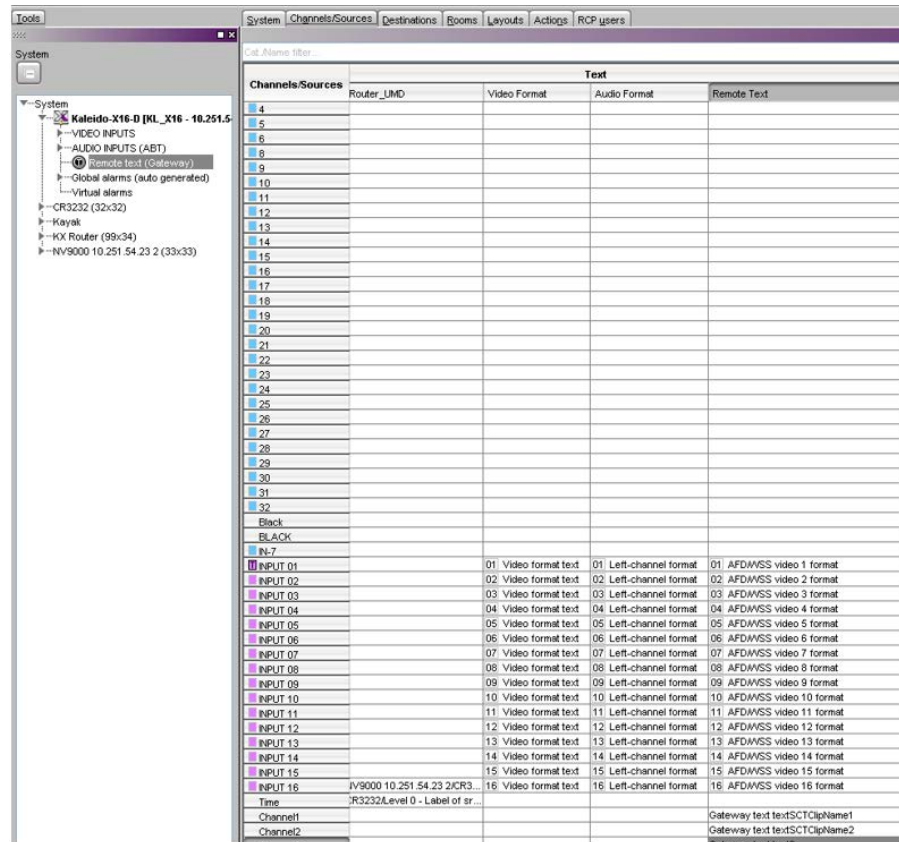
4 Select the **Layouts** tab. Add a text control and set the Text label level to Remote Text. From the Sources list, drag Channel1 and drop it onto the newly added text control.







5 Select **Channels/Sources** tab and verify that Channel1 Remote Text shows the correct text control.



## Setup Kaleido Multiviewer device in Ignite Device Configuration Manager

Add the Show clock display. Location name set to the name of green count up timer in Kaleido Multiviewer.

Properties of the selected device

**1 - WPBF**

Slot#	Device Name	Device Type	<input checked="" type="checkbox"/> Live	<input type="checkbox"/> Prep
261	KalShow	Kaleido Multiviewer	<input checked="" type="checkbox"/>	<input type="checkbox"/>

Item	Value
Comm Type	TCP/IP
IP Address	10.251.54.28
IP Port	13000
Clock Display	Show
Location Name	TimerShow
Text Label Name	

Ok Cancel

Add the Event clock display. Location name set to the name of blue count up timer in Kaleido Multiviewer.

Properties of the selected device

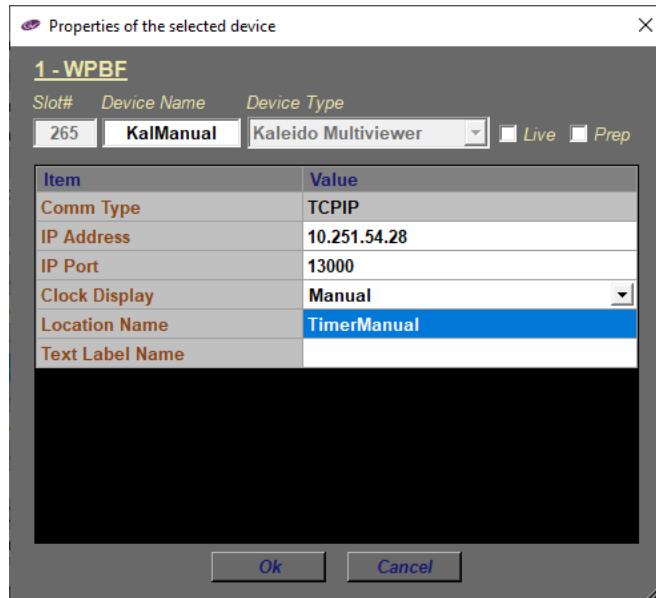
**1 - WPBF**

Slot#	Device Name	Device Type	<input type="checkbox"/> Live	<input type="checkbox"/> Prep
263	KalEvent	Kaleido Multiviewer	<input type="checkbox"/>	<input type="checkbox"/>

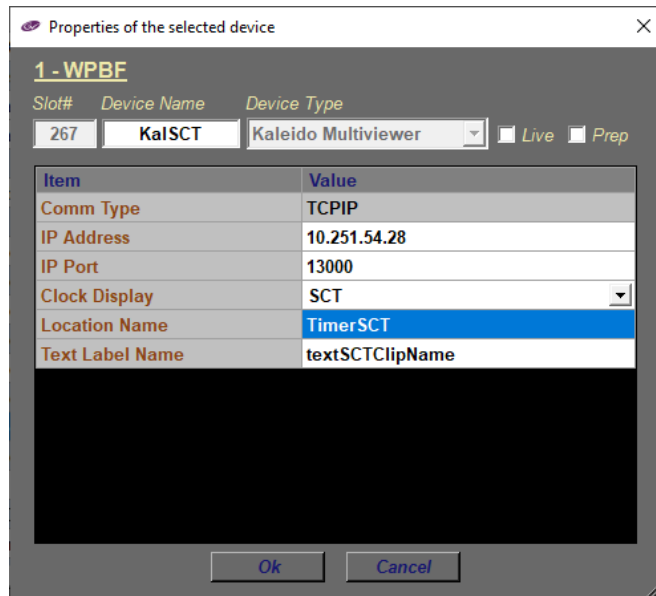
Item	Value
Comm Type	TCP/IP
IP Address	10.251.54.28
IP Port	13000
Clock Display	Event
Location Name	TimerEvent
Text Label Name	

Ok Cancel

Add the Manual clock display. Location name set to the name of yellow count up timer in Kaleido Multiviewer.



Add the SCT clock display. Location name set to the name of SCT timer in Kaleido Multiviewer. Text Label Name set to the SCT Clip Name text control in Kaleido Multiviewer.



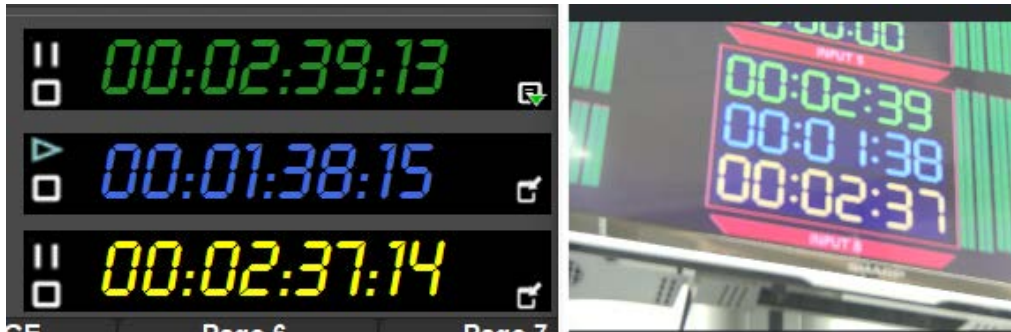
## Ignite Clocks

User is able to:

- View the Show clock (green), Event clock (blue) and Manual clock (yellow) in Kaleido Multiviewer. The timer will start counting up after user presses the Ignite clock start button and will stop counting after user presses the Ignite clock pause/stop button.

User is not able to:

- View the Show clock counting up at a specific time after the user sets the clock time for the Show clock (green) in Kaleido Multiviewer.
- View the Show clock displaying real-time in Kaleido Multiviewer .



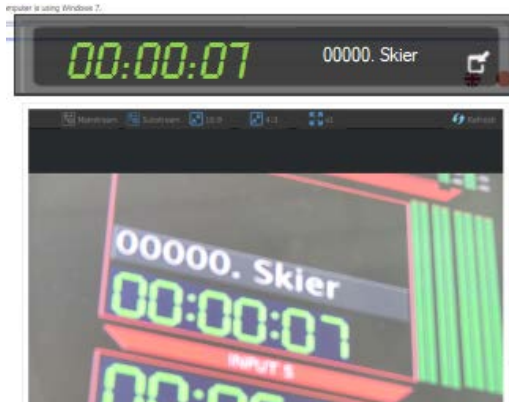
### SCT Clock

User is able to:

- View the Server Count Down Timer in Kaleido Multiviewer counting up or down based on the count mode setting in the Count Down Timer Configuration.
- View the current Cue/Playing clip name in Kaleido Multiviewer.

User is not able to:

- View the Server Count Down Timer in Kaleido Multiviewer displaying the color based on the setting in TimePoint Configuration in the Count Down Timer Configuration.



## Compatibility

### Hardware

This release requires hardware equipped with Windows 64-bit operating system.

### Software

For NRCS/MOS integration, Ignite Release 11.9.6 require Media Object Portal (MOP) version 11.2 or newer.

For a current list of supported/controlled devices, contact an authorized Grass Valley reseller or contact Grass Valley sales directly.

## Installation and Configuration

### Considerations

- Ignite 11.9.6 requires Microsoft .NET 4.6.2 and Microsoft Visual C++ Redistributable for VS 2017.
- With 11.9.6, desktop experience must be enabled otherwise graphics might be compromised.

### Hardware Installation

Only qualified Grass Valley Service Engineers are authorized to install the Ignite Live Production Control System. Contact your local Grass Valley representative, your Grass Valley Ignite Technical Service representative, or Grass Valley Support Center.

### Software Installation

Only qualified Grass Valley Service Engineers are authorized to install Ignite Live Production Control System Release 11.9.6 software. Contact your local Grass Valley representative, your Grass Valley Ignite Technical Service representative, or Grass Valley Support Center.

## Open Source Software Information

For instructions on how to obtain a copy of any source code being made publicly available by Grass Valley related to software used in this Grass Valley product you may send your request in writing to:

**Grass Valley  
Open Source Software Management  
3499 Douglas-B-Floreani, QC  
Canada**

Or email your request to:

ossManagement@grassvalley.com

This document contains additional information regarding licenses, acknowledgments and required copyright notices for open source packages used in this Grass Valley product.

The software components listed below are used by Grass Valley's products.

## Apache

### License

Apache 2.0

### Copyright Text

This product includes software developed by  
The Apache Software Foundation (<http://www.apache.org/>).

The Windows Installer is built with the Nullsoft  
Scriptable Install System (NSIS), which is  
open source software. The original software and  
related information is available at  
<http://nsis.sourceforge.net>.

Java compilation software for JSP pages is provided by Eclipse,  
which is open source software. The original software and  
related information is available at  
<http://www.eclipse.org>.

## Microsoft Public License

### License

Microsoft Public License 1.0 (Ms-PL 1.0)

## Copyright Text

### Microsoft Public License (Ms-PL)

This license governs use of the accompanying software. If you use the software, you accept this license. If you do not accept the license, do not use the software.

#### 1. Definitions

The terms “reproduce,” “reproduction,” “derivative works,” and “distribution” have the same meaning here as under U.S. copyright law.

A “contribution” is the original software, or any additions or changes to the software.

A “contributor” is any person that distributes its contribution under this license.

“Licensed patents” are a contributor’s patent claims that read directly on its contribution.

#### 2. Grant of Rights

(A) Copyright Grant- Subject to the terms of this license, including the license conditions and limitations in section 3, each contributor grants you a non-exclusive, worldwide, royalty-free copyright license to reproduce its contribution, prepare derivative works of its contribution, and distribute its contribution or any derivative works that you create.

(B) Patent Grant- Subject to the terms of this license, including the license conditions and limitations in section 3, each contributor grants you a non-exclusive, worldwide, royalty-free license under its licensed patents to make, have made, use, sell, offer for sale, import, and/or otherwise dispose of its contribution in the software or derivative works of the contribution in the software.

#### 3. Conditions and Limitations

(A) No Trademark License- This license does not grant you rights to use any contributors’ name, logo, or trademarks.

(B) If you bring a patent claim against any contributor over patents that you claim are infringed by the software, your patent license from such contributor to the software ends automatically.

(C) If you distribute any portion of the software, you must retain all copyright, patent, trademark, and attribution notices that are present in the software.

(D) If you distribute any portion of the software in source code form, you may do so only under this license by including a complete copy of this license with your distribution. If you distribute any portion of the software in compiled or object code form, you may only do so under a license that complies with this license.

(E) The software is licensed “as-is.” You bear the risk of using it. The contributors give no express warranties, guarantees or conditions. You may have additional consumer rights under your local laws which this license cannot change. To the extent permitted under your local laws, the contributors exclude the implied warranties of merchantability, fitness for a particular purpose and non-infringement.

## MIT

### **License**

MIT License (MIT)

### **Copyright Text**

The MIT License (MIT)

Permission is hereby granted, free of charge, to any person obtaining a copy of this software and associated documentation files (the "Software"), to deal in the Software without restriction, including without limitation the rights to use, copy, modify, merge, publish, distribute, sublicense, and/or sell copies of the Software, and to permit persons to whom the Software is furnished to do so, subject to the following conditions:

The above copyright notice and this permission notice shall be included in all copies or substantial portions of the Software.

THE SOFTWARE IS PROVIDED "AS IS", WITHOUT WARRANTY OF ANY KIND, EXPRESS OR IMPLIED, INCLUDING BUT NOT LIMITED TO THE WARRANTIES OF MERCHANTABILITY, FITNESS FOR A PARTICULAR PURPOSE AND NONINFRINGEMENT. IN NO EVENT SHALL THE AUTHORS OR COPYRIGHT HOLDERS BE LIABLE FOR ANY CLAIM, DAMAGES OR OTHER LIABILITY, WHETHER IN AN ACTION OF CONTRACT, TORT OR OTHERWISE, ARISING FROM, OUT OF OR IN CONNECTION WITH THE SOFTWARE OR THE USE OR OTHER DEALINGS IN THE SOFTWARE.

## Mozilla

### **License**

Mozilla Public License 2.0 (MPL 2.0)

### **Copyright Text**

This Source Code Form is subject to the terms of the Mozilla Public License, v. 2.0. If a copy of the MPL was not distributed with this file, you can obtain one at <http://mozilla.org/MPL/2.0/>.

## NSubstitute

### **License**

BSD License



### **Copyright Text**

Redistribution and use in source and binary forms, with or without modification, are permitted provided that the following conditions are met:

1. Redistributions of source code must retain the above copyright notice, this list of conditions and the following disclaimer.
2. Redistributions in binary form must reproduce the above copyright notice, this list of conditions and the following disclaimer in the documentation and/or other materials provided with the distribution.

THIS SOFTWARE IS PROVIDED BY THE COPYRIGHT HOLDERS AND CONTRIBUTORS "AS IS" AND ANY EXPRESS OR IMPLIED WARRANTIES, INCLUDING, BUT NOT LIMITED TO, THE IMPLIED WARRANTIES OF MERCHANTABILITY AND FITNESS FOR A PARTICULAR PURPOSE ARE DISCLAIMED. IN NO EVENT SHALL THE COPYRIGHT HOLDER OR CONTRIBUTORS BE LIABLE FOR ANY DIRECT, INDIRECT, INCIDENTAL, SPECIAL, EXEMPLARY, OR CONSEQUENTIAL DAMAGES (INCLUDING, BUT NOT LIMITED TO, PROCUREMENT OF SUBSTITUTE GOODS OR SERVICES; LOSS OF USE, DATA, OR PROFITS; OR BUSINESS INTERRUPTION) HOWEVER CAUSED AND ON ANY THEORY OF LIABILITY, WHETHER IN CONTRACT, STRICT LIABILITY, OR TORT (INCLUDING NEGLIGENCE OR OTHERWISE) ARISING IN ANY WAY OUT OF THE USE OF THIS SOFTWARE, EVEN IF ADVISED OF THE POSSIBILITY OF SUCH DAMAGE.





## **Grass Valley Technical Support**

For technical assistance, contact our international support center, at 1-971-999-0894 (US and Canada) or +1 530 478 4148.

To obtain a local phone number for the support center nearest you, please consult the Contact Us section of Grass Valley's website ([www.grassvalley.com](http://www.grassvalley.com)).

An online form for e-mail contact is also available from the website.

## **Corporate Head Office**

Grass Valley  
3499 Douglas-B.-Floreani  
St-Laurent, Quebec H4S 2C6  
Canada  
Telephone: +1 514 333 1772  
Fax: +1 514 333 9828  
[www.grassvalley.com](http://www.grassvalley.com)