

KAM-XM-SERIES

HD UDC/UPC/UNC/DNC MODULES

Release Notes



SOFTWARE VERSION 1.4.4

071833703
DECEMBER 2005

the most watched worldwide

Contacting Grass Valley

Region	Voice	Fax	Address	Web Site
North America	(800) 547-8949 Support: 530-478-4148	Sales: (530) 478-3347 Support: (530) 478-3181	Grass Valley P.O. Box 599000 Nevada City, CA 95959-7900 USA	www.thomsongrassvalley.com
Pacific Operations	+852-2585-6688 Support: 852-2585-6579	+852-2802-2996		
U.K., Asia, Middle East	+44 1753 218 777	+44 1753 218 757		
France	+33 1 45 29 73 00			
Germany, Europe	+49 6150 104 782	+49 6150 104 223		

Copyright © Grass Valley. All rights reserved.

Grass Valley Web Site

The www.thomsongrassvalley.com web site offers the following:

Online User Documentation — Current versions of product catalogs, brochures, data sheets, ordering guides, planning guides, manuals, and release notes in .pdf format can be downloaded.

FAQ Database — Solutions to problems and troubleshooting efforts can be found by searching our Frequently Asked Questions (FAQ) database.

Software Downloads — Software updates, drivers, and patches can be downloaded.

Contents

- KAM-XM Up/Down Converters Release Notes** 5
 - Introduction 5
 - Version 1.4.4 Software Release 6
 - New Feature Enhancement 6
 - Known Software Issues 7
 - System Requirements 8
 - Software Updating 8
 - Acquiring NetConfig Software 8
 - Acquiring the Latest KAM-XM Software 9
 - Software Updating With NetConfig 9
 - Accessing Reference Documents 13

KAM-XM Up/Down Converters Release Notes

Introduction

This document provides information on the latest release of the software for use with the following Kameleon modules:

- KAM-XM-UDC – HDTV Up/Down Converter
- KAM-XM-UPC – HDTV High Quality Up Converter
- KAM-XM-UNC – HDTV Up Converter with Advanced SDTV Noise Reduction
- KAM-XM-DNC – HDTV Down Converter

Read this document completely before attempting to download the latest software.

This document details:

- Software release overview including new features available with this software and known software issues ([page 6](#)),
- System requirements ([page 8](#)),
- Information on acquiring and updating software ([page 8](#)), and
- Accessing Reference Documents ([page 13](#)).

Version 1.4.4 Software Release

The latest software release for the KAM-XM modules adds the following new feature enhancement:

- 2 or 4 frame delay control for setting the amount of delay through the module.

Please refer to [Known Software Issues on page 7](#) for important notes on this release of KAM-XM modules.

New Feature Enhancement

A new **App Configuration** control has been added to the Format web page ([Figure 1 on page 7](#)) that allows you to set the amount of frame delay through the module.

For down conversion applications, select either **2 Frame** or **4 Frame Delay**.

For up conversion applications, select from **4 Frame Delay**, **4 Frame Delay Common** (sets the Aspect Ratio to Common Sides), **2 Frame Delay Common** (sets the Aspect Ratio to Common Sides), **2 Frames Delay**.

When using the shorter delay of 2 frames, the following functionality will be affected due to the shorter signal path through the module:

- The module cannot be externally referenced.
- The 2 Frame mode utilizes a different de-interlace technique, causing the resultant down conversion to somewhat different.
- In up conversion mode, no noise reduction filters are available.

Figure 1. Format Web Page



Model: [KAM-XM-UPC](#) Description: [HQ Up Converter](#)

Frame Location: [Modular Lab](#) , Slot: [2](#)

Last Recalled E-MEM: [Power On Default](#)

Format Conversion

	Current	Desired	Available
Input	480i59.94	1080i59.94 ▼	Yes
Output	480i59.94	480i59.94 ▼	Yes
<input type="button" value="Apply"/>			

App Configuration: [4 Frame Delay](#) ▼

Source Material: [Video](#) ▼

Deinterlace Type: [Vert Interpolation](#) ▼

Known Software Issues

Any existing software or operating issues or defects still present in this release are reported in [Table 1](#).

Table 1. Known Software and Operating Issues

Area	Issue	ID
2000GEN	When the 2000GEN module is locked to 525 or 625 line rate and the Reference is set to External on the Setup web page, inputting a signal into the module of an opposite line rate from that selected on the 2000GEN does not report an error on the Status web page.	55229
Software Update	After a software update download, the module must be manually reset (removed and reinserted) to update the version numbers on the Status web page.	44128
Down Conversion	After a down conversion, active data is present on line 20 which is normally reserved as a V Blank line.	45884
E-MEM	When a saved E-MEM is loaded from an external storage area, the name associated with the E-MEM does not update in the corresponding Local Operations entry field. But when this E-MEM is recalled, the parameters are uploaded and applied to the module.	51408
Factory Recall	After a recall of factory defaults using the Restore factory settings button on the E-MEM page, the format settings on the Format web page may need to be reset.	51607
KAM-XM-DNC	When an untimed source is switched at the input to the module, black video will appear for 1-2 seconds before the new SD video appears on the output.	52774
Closed Captioning	When an aspect of anamorphic is selected with a down converted signal containing closed captioning, a black box may appear covering a portion of the bottom half/mid-center of the video on the monitor.	52786
RP 177 Setting	The RP 177 checkbox setting on the ProcAmp web page is not remembered after a power cycle, E-MEM recall, or restoration of factory settings. It will have to be reselected if it was checked,	55151
Web Page	The Frame Reference hyperlink on a module Status web page opens an empty page. This should link to the Setup web page.	55224

System Requirements

Operation of the KAM-XM modules in Kameleon 2000 Series frames has the following hardware and software requirements:

- Modules must be installed in a 2000T1DNG or 2000T3DNG Kameleon 2000 Series frame containing a 2000GEN module.
- The frame must have a 2000NET module with assembly number 671-5231-01 or later running software version 4.0.0 or later.

Software Updating

Software updating for the KAM-XM modules is done using the NetConfig Networking application available from the Thomson Grass Valley ftp site or Customer Service data base as described in this section. It is recommended to use the latest available version of NetConfig for software updating.

Note Kameleon 2000 frames with a 2000NET module running version 4.0.0 and later will no longer provide a Software Update web page.

Acquiring NetConfig Software

If you do not have NetConfig or the latest version, you can download it from the Thomson Grass Valley ftp site at this URL:

<ftp://ftp.thomsongrassvalley.com/pub/router/NetConfig/Version 2.0.6/>

1. Right-click on the latest NetConfig link to download the zipped file to the C:\temp folder or other convenient location on your PC.
2. Extract the zipped files onto your local drive:
3. Double-click on the NetConfig.EXE file to install NetConfig.

Note Installing NetConfig into the default location given in the install script (C:\Programs\Grass Valley Group) is recommended for future NetConfig and module software updates.

Acquiring the Latest KAM-XM Software

To acquire the latest Kameleon software, connect to the Grass Valley Customer Service FAQ database from the following URL:

<http://gvg.custhelp.com>

This will take you to the Grass Valley Customer Service FAQ data base. The information provided here is the most up-to-date. You may also subscribe to software updates through the FAQ site. This is recommended so that when new versions of software are released, you are notified by email.

If you cannot find the software you need here, go directly to the Grass Valley Customer FTP site at the following URL:

<ftp://ftp.thomsongrassvalley.com/pub/modular>

To download the latest Kameleon HD software from either the Customer Service database or the ftp site, do the following:

1. Navigate to the Customer Service FAQ site and click on the first FAQ, **DOWNLOAD THE LATEST SOFTWARE?**
2. Select the 2000 Series link.
3. Select the link to the latest Kameleon module software.
4. Select the link to the KAM-XM software.

If using the ftp site, enter the URL below to access the software directly:

<ftp.thomsongrassvalley.com/pub/modular/Kameleon/KAM-XM>

5. Follow the instructions below to update the software.

Software Updating With NetConfig

To use this method, your 2000NET module must be running version 4.0.0 or later and you must have the NetConfig Networking Application option running on a networked PC on the same subnet as the frame with the 2000NET module. Seven files are required for updating software, six .fld files and an .sw2 for the module being updated.

To use NetConfig for software updating, follow the steps below:

1. Begin the upgrade procedure by moving the KAM-XM files you have downloaded into your Temp directory into the correct NetConfig directories (these steps apply to all versions of NetConfig).

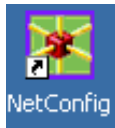
2. Copy all KAM-XM software download files from the C:\temp directory into the main NetConfig directory on your PC. This is normally in the default location in C:\Program Files\Grass Valley Group\NetConfig.

If you have installed NetConfig in another location, find the location of the NetConfig directory by right-clicking on the NetConfig shortcut. Select **Properties** and note the location in the **Start In** field. Download the package to the NetConfig directory.

3. In the main NetConfig directory, locate a folder named **modular**. If this folder does not exist, create a folder called **modular** in the main NetConfig directory.
4. Move the six .fld files you copied into the main NetConfig directory into this **modular** directory.
5. Verify that the KAM-XM_1.4.4.sw2 file is somewhere in the main NetConfig directory (not in the **modular** directory).

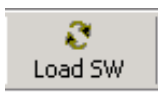
Note NetConfig reads each .sw2 file in its main directory and navigates to the directory given in these files to find the .fld files available. The .sw2 file should not have a .txt extension or NetConfig will not recognize it. There may be a number of .sw2 and .fld files in your NetConfig directory for other modular products. These will not interfere with the update.

CAUTION During the download, the module will have no video output, so be sure the module is off-air before upgrading.



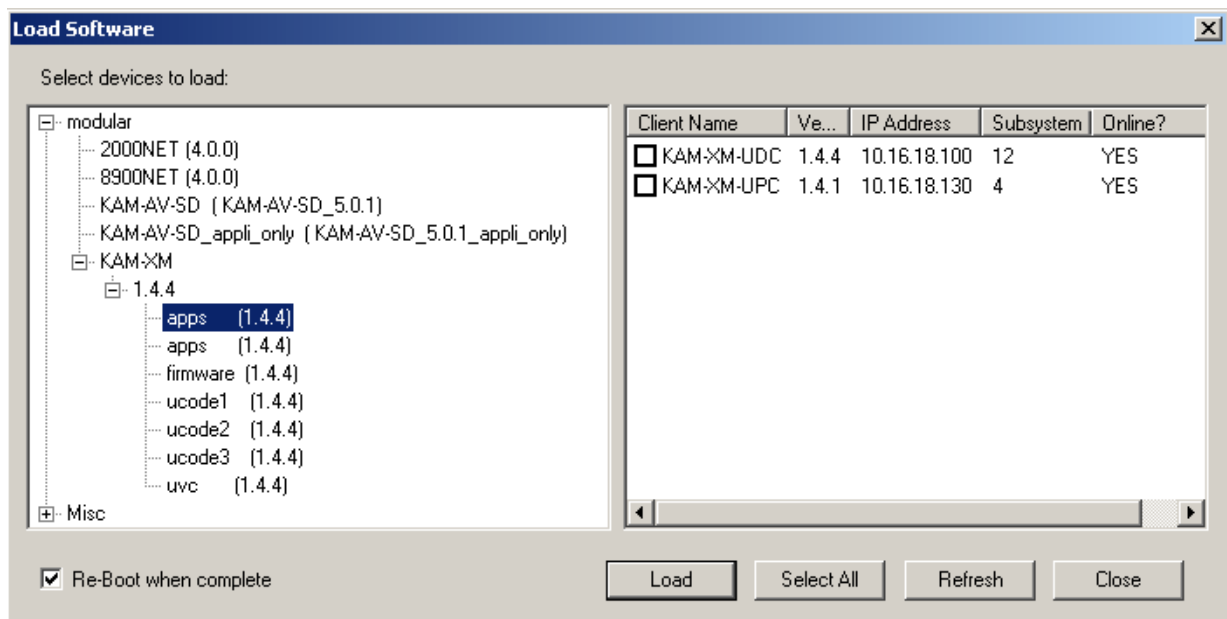
6. Open NetConfig.

Note If you have not used NetConfig before, refer to the *NetConfig Instruction Manual* included during installation in the main NetConfig directory in pdf format (NetConfig.pdf).



7. Click on the **Load SW** button on the top of the NetConfig toolbar.
8. This will bring up the Load Software screen ([Figure 2 on page 11](#)). This screen shows the latest version as of NetConfig currently available, version 2.0.6. If you are using an earlier version of NetConfig, the file structure is slightly different, but the files versions are the same.

Figure 2. NetConfig Load Software Screen – First .fld Download



9. Open the **KAM-XM** directory.

The following files should appear in the KAM-XM directory, all reporting the same software version:

- apps (1.4.4)
- firmware (1.4.4)
- ucode1 (1.4.4)
- ucode2 (1.4.4)
- ucode3 (1.4.4)
- uvc (1.4.4)

Note Previous software updates may also be present in the modular folder and may appear in the KAM-XM directory

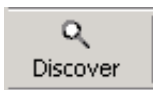
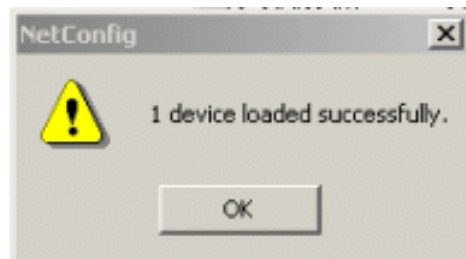
10. Highlight the **apps** Device Type. All KAM-XM modules accessible on this subnet will be displayed in the window on the right with their current software version and frame IP Address.

11. Find the KAM-XM module you are updating in the Client Name list. Check the corresponding checkbox in the window on the right to indicate you wish to update this device.

Note You may upgrade all modules at once with this application by checking all of the Client Name checkboxes. We recommend upgrading one module first to understand the process before attempting to upgrade all of the modules at once.

12. Check the **Re-Boot when complete** checkbox in the lower left corner of the screen.
13. Click on the **Load** button to begin the update.
14. If the load has been successful, a popup will appear as shown in [Figure 3](#). Click the **OK** button.

Figure 3. Load Successful Popup



15. Allow the reboot to complete.
16. Bring up NetConfig again and click on the **Discover** button in the top menu bar. Then click on the **Load SW** button.
17. Select the **firmware** Device Type on the left ([Figure 2 on page 11](#)).
18. Select the same Client Name as the first download.
19. Check the **Re-Boot when complete** checkbox in the lower left corner of the screen.
20. Press the **Load** button to download the firmware to the KAM-XM module selected.
21. If the load has been successful, a popup will appear as shown in [Figure 3 on page 12](#). Click the **OK** button.
22. Allow the reboot to complete.
23. Bring up NetConfig again and click on the **Discover** button in the top menu bar. Then click on the **Load SW** button.
24. Select the **ucode1** Device Type on the left.
25. Select the same Client Name as the first download.
26. Complete the same steps for the rest of the .fld files listed, allowing the reboot to complete each time.
27. Verify that all downloads were successful by checking the Download Status table on the Status web page.

For more information on using NetConfig, refer to the *NetConfig Networking Application Instruction Manual* which is included with the option, available on the Thomson Grass Valley web site, and may also be present in the NetConfig directory during some NetConfig installations (Newton Control Panel installation is one example).

Accessing Reference Documents

For on-line access to reference documents referred to in these Release Notes, navigate to the following URL:

<http://www.thomsongrassvalley.com/docs/>

Select **Broadcast Products**, then the **Modular Products** link and scroll through the available documents. All of the documents referred to may also be ordered in hard copy from any Grass Valley Sales or Customer Service source. Refer to [Contacting Grass Valley](#) at the front of this document.

