

# 8964ENC/-FS

4-CHANNEL SDI-TO-NTSC/PAL ENCODER

## Release Notes



SOFTWARE VERSION 1.2.2

071825902  
AUGUST 2004

*the most watched worldwide*

# Contacting Grass Valley

Region	Voice	Fax	Address	Web Site
North America	(800) 547-8949 Support: 530-478-4148	Sales: (530) 478-3347 Support: (530) 478-3181	Grass Valley P.O. Box 599000 Nevada City, CA 95959-7900 USA	www.thomsongrassvalley.com
Pacific Operations	+852-2585-6688 Support: 852-2585-6579	+852-2802-2996		
U.K., Asia, Middle East	+44 1753 218 777	+44 1753 218 757		
France	+33 1 45 29 73 00			
Germany, Europe	+49 6150 104 782	+49 6150 104 223		

Copyright © Thomson Broadcast and Media Solutions All rights reserved.

## Grass Valley Web Site

The [www.thomsongrassvalley.com](http://www.thomsongrassvalley.com) web site offers the following:

**Online User Documentation** — Current versions of product catalogs, brochures, data sheets, ordering guides, planning guides, manuals, and release notes in .pdf format can be downloaded.

**FAQ Database** — Solutions to problems and troubleshooting efforts can be found by searching our Frequently Asked Questions (FAQ) database.

**Software Downloads** — Software updates, drivers, and patches can be downloaded.

# *8964ENC Release Notes*

## **Introduction**

This document provides information on the latest release of the software for use with the 8964ENC (or 8964ENC-FS) module. Read this document completely before attempting to download the latest software.

Pertinent reference documents are available on-line at [www.thomson-grassvalley.com](http://www.thomson-grassvalley.com) or hard copies can be ordered from Grass Valley Customer Service.

This document details:

- Summary of new software features and operation and known software issues,
- Hardware requirements (including field modifications necessary),
- Acquiring and updating software, and
- Accessing reference documents.

## **Version 1.2.2 Software Release**

The 8964ENC software release 1.2.2 adds the following feature:

- Burst enable/disable control in the Video Proc controls

### **Burst Enable/Disable**

A control to turn Burst on and off in the Video Processor has been added to the local and remote controls.

## Remote Control

Burst can be turned on (default) or off by using the Video Proc web page shown in Figure 1. Turn Burst on by selecting the **Burst** checkbox, disable it by unchecking the box.

Figure 1. Video Proc Web Page

The screenshot shows the 'Video Proc' web interface. At the top, it displays the model '8964ENC-FS', description '4 Channel SDI to NTSC/PAL Encoder', frame location 'Tim's Office', slot '2', and last recalled E-MEM 'Factory Defaults'. Below this, a text box shows 'Current Line Rate: Not Present'. The main interface is divided into four channels. Channel 1 is selected, showing 'input 1'. The 'Burst' checkbox is checked and circled in red. The 'Test Signal Generator' is set to 'Color Bars'. Below this are settings for Chroma (Kill), Black Clip (None, -11%, -6%, -1.5%), Contrast/Y Gain (100.0%), Saturation/Chroma Gain (100.0%), Brightness/Y Offset (0.00%), and Hue/Chroma Phase (0.0). At the bottom, there are buttons for 'Apply Settings To' (Channel 2, Channel 3, Channel 4, All) and 'Reset Defaults For' (Current Channel, All Channels). Navigation links 'Back', 'Functional View', and 'Next' are at the bottom.

**Video Proc**

Model: 8964ENC-FS Description: 4 Channel SDI to NTSC/PAL Encoder  
Frame Location: Tim's Office , Slot: 2  
Last Recalled E-MEM: Factory Defaults

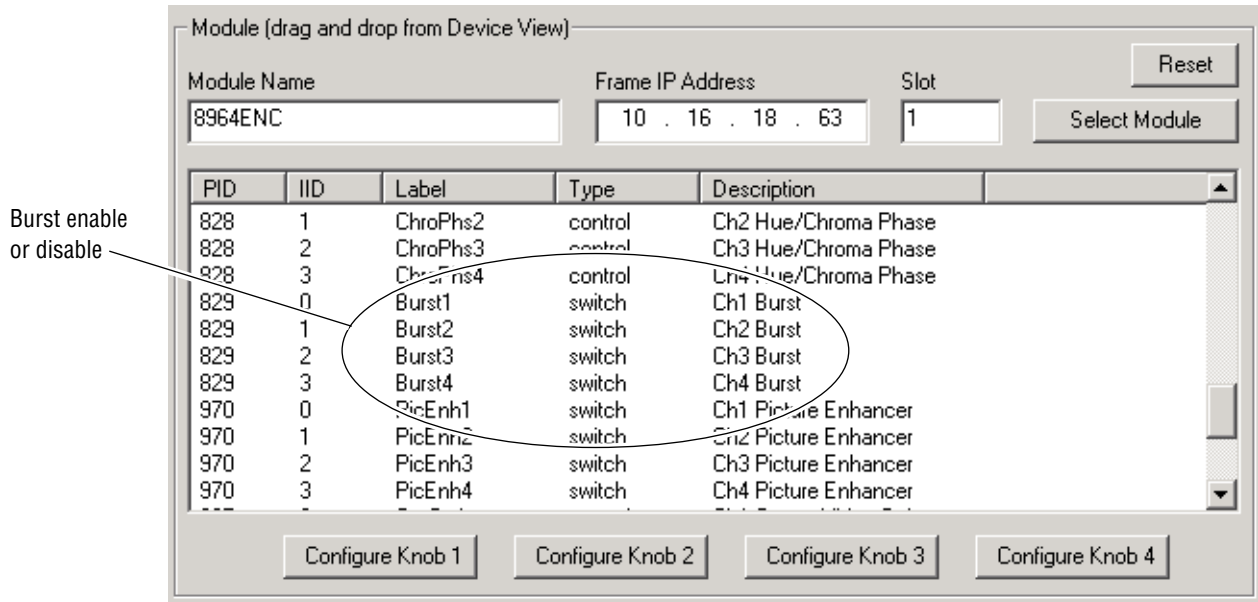
Current Line Rate: Not Present

<b>Channel 1</b>	Channel 2	Channel 3	Channel 4
input 1	Input 2	Input 3	Input 4
Test Signal Generator: <input type="radio"/> Disable <input checked="" type="radio"/> Color Bars			Burst: <input checked="" type="checkbox"/> On
Chroma: <input type="checkbox"/> Kill	Black Clip: <input checked="" type="radio"/> None <input type="radio"/> -11% <input type="radio"/> -6% <input type="radio"/> -1.5%		
Contrast/Y Gain (%) 100.0 Apply		Saturation/Chroma Gain (%) 100.0 Apply	
Brightness/Y Offset (%) 0.00 Apply		Hue/Chroma Phase (Deg) 0.0 Apply	
Apply Settings To:	Channel 2	Channel 3	Channel 4 All
Reset Defaults For:	Current Channel	All Channels	

[Back](#) [Functional View](#) [Next](#)

Burst can also be controlled remotely by a Newton Control Panel. Controls for Burst for each channel are shown in the Newton Control Panel Configurator example in [Figure 2](#). Instructions for using these controls are provided in the Newton Control Panel Instruction Manual.

Figure 2. Newton Control Panel Burst Controls



## Local Control

To enable or disable Burst for each channel with the on-board local controls, select the desired channel using the Channel Select Mode controls described in the 8964ENC User Manual. Select Bank 1 (2nd LED off), Function Setting A. Moving the paddle switch up, enables Burst, moving it down, disables Burst in the Video Processor.

## Known Software Issues

Any existing software or operating issues or defects still present in this release are reported in [Table 1](#).

Table 1. Known Software and Operating Issues

Area	Issue	ID
Reference input	On occasion, when the reference input is changed from 525 to 625 then back to 525, the output signal on a channel will be distorted due to a failure to lock to the reference sync. Changing the reference may also cause a vertical offset to occur in the video output. Reseating the module will correct both conditions.	36182, 36246

## Hardware Requirements

Hardware modifications may be necessary on some versions of the module to enable updating or to be compatible with the latest software. Modification instructions are given in the form of Field Modification Notes (FMN) available from Grass Valley Customer Service (see [Accessing Reference Documents](#) on page 9).

Refer to [Table 2](#) below for an overview of the module versions and any necessary modifications.

Table 2. Hardware Modifications

Module Assembly Number	FMN Number	Comments
671-6471-00 (all letter versions)	075074000	This modification requires removing and replacing four surface mount capacitors.

## Acquiring and Updating Software

Software upgrade packages are available from the Grass Valley Customer Service FAQ site or the public FTP site. The free FTP server software is also available.

You may connect to the Grass Valley FAQ site to access the latest module and free FTP Server software and subscribe to software updates automatically at the following URL:

<http://gvg.custhelp.com>

The information provided here is the most up-to-date. Using this link is recommended so that when new versions of software are released, you are notified by email.

To find the latest available 8900 software on the FAQ site, do the following:

1. Navigate to the FAQ site and click on the first FAQ in the list labeled DOWNLOAD THE LATEST SOFTWARE?
2. Select the link to the correct module software.

If you cannot find the software you need, you may also go directly to the Thomson Grass Valley FTP site to download the software at the following location:

<ftp://ftp.thomsongrassvalley.com/pub/modular>

### FTP Method

If you do not have NetConfig, use the FTP Server download procedure outlined in detail in the 8900NET Instruction Manual available on-line.

## NetConfig Method

To use this method, you must have the NetConfig Networking Application option running on a networked PC on the same subnet as the frame with an 8900NET module and the 8964ENC/-FS to be updated. Two files are required for updating software, an .fld and an .sw2 for the module being updated. For acquiring software, refer to [Acquiring and Updating Software on page 6](#).

To use NetConfig for software updating, follow the steps below:

1. Locate the PC directory in which the NetConfig application has been installed. The default location is C:\Program Files\Grass Valley Group\NetConfig.

If this is not where NetConfig was installed, right-click on the NetConfig desktop shortcut and select **Properties**, click on the **Shortcut** tab and note the location of the installation in the **Start In** field.

2. Copy the .sw2 file for the module update into the main NetConfig directory.
3. Create a subdirectory named **modular** (if one does not already exist) in the main NetConfig directory.
4. Copy the .fld file for the update into this modular subdirectory in the Netconfig directory.
5. Open NetConfig and click on the **Load SW** icon on the top toolbar (shown at left).



6. The NetConfig Update Devices window will open showing the device types available for update ([Figure 3 on page 8](#)).

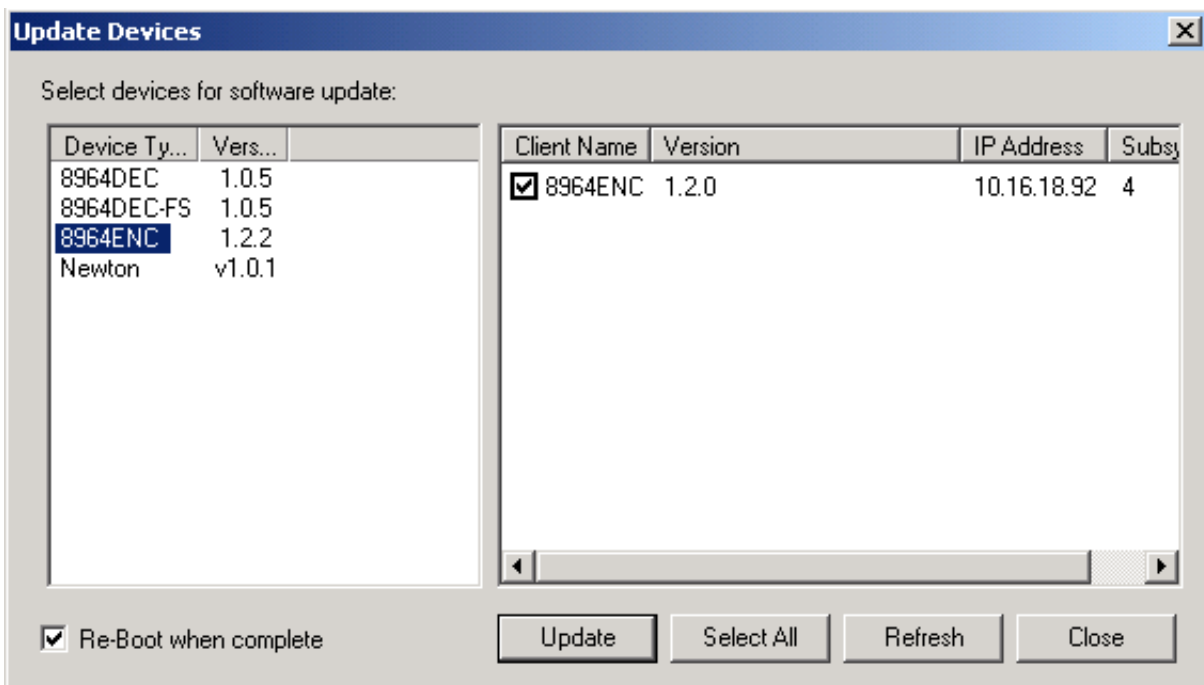
These device types and versions represent the .sw2 and .fld files loaded in the NetConfig main directory and the modular subdirectory. These files must be present on the PC running NetConfig for them to appear in the Device Type list.

7. Select the Device Type you wish to update. In the example in [Figure 3](#), the 8964ENC Device Type has been selected. The modules accessible on the network of this device type will appear in the window on the right under the **Client Name** heading as shown.

The current software loaded on each module will be listed as well as the IP address of the module client.

8. Check the corresponding **Client Name** boxes to upgrade the modules or use the **Select All** button to update all modules of this type present on the network.
9. Press the **Update** button to perform the update to all the selected modules.
10. Once the updating is complete, select the **Refresh** button to make sure all selected modules have updated to the correct software version which will be reported in the window.

Figure 3. NetConfig Update Devices Window



For more information on using NetConfig, refer to the NetConfig Networking Application Instruction Manual which is included with the option, available on the Thomson Grass Valley web site, and may also be present in the NetConfig directory during some product installations (Newton Control Panel installation is one example).



## **Accessing Reference Documents**

For on-line access to reference documents referred to in these Release Notes, navigate to the following URL:

<http://www.thomsongrassvalley.com/docs/>

Select **Broadcast Products**, then the **Modular Products** link and scroll through the available documents. All of the documents referred to may also be ordered in hard copy from any Grass Valley Sales or Customer Service source. Refer to *Contacting Grass Valley* at the front of this document.

