

8925DMB-B and -U

SD/HD DIGITAL AUDIO DE-EMBEDDER MODULES

Release Notes
Software Version 2.1.4

Contacting Grass Valley

International Support Centers	France 24 x 7	+800 8080 2020 or +33 1 48 25 20 20	United States/Canada 24 x 7	+1 800 547 8949 or +1 530 478 4148
Local Support Centers (available during normal business hours)	Asia	Hong Kong, Taiwan, Korea, Macau: +852 2531 3058 Indian Subcontinent: +91 22 24933476 Southeast Asia/Malaysia: +603 7805 3884 Southeast Asia/Singapore: +65 6379 1313 China: +861 0660 159 450 Japan: +81 3 5484 6868		
		Australia and New Zealand: +61 1300 721 495	Central/South America: +55 11 5509 3443	
		Middle East: +971 4 299 64 40 Near East and Africa: +800 8080 2020 or +33 1 48 25 20 20		
	Europe	Belarus, Russia, Tadzikistan, Ukraine, Uzbekistan: +7 095 2580924 225 Switzerland: +41 1 487 80 02 S. Europe/Italy-Roma: +39 06 87 20 35 28 -Milan: +39 02 48 41 46 58 S. Europe/Spain: +34 91 512 03 50 Benelux/Belgium: +32 (0) 2 334 90 30 Benelux/Netherlands: +31 (0) 35 62 38 42 1 N. Europe: +45 45 96 88 70 Germany, Austria, Eastern Europe: +49 6150 104 444 UK, Ireland, Israel: +44 118 923 0499		

Copyright © Grass Valley USA, LLC. All rights reserved.

This product may be covered by one or more U.S. and foreign patents.

Grass Valley Web Site

The www.grassvalley.com web site offers the following:

Online User Documentation — Current versions of product catalogs, brochures, data sheets, ordering guides, planning guides, manuals, and release notes in .pdf format can be downloaded.

FAQ Database — Solutions to problems and troubleshooting efforts can be found by searching our Frequently Asked Questions (FAQ) database.

Software Downloads — Download software updates, drivers, and patches.



END-OF-LIFE PRODUCT RECYCLING NOTICE

Grass Valley's innovation and excellence in product design also extends to the programs we've established to manage the recycling of our products. Grass Valley has developed a comprehensive end-of-life product take back program for recycle or disposal of end-of-life products. Our program meets the requirements of the European Union's WEEE Directive, the United States Environmental Protection Agency, and U.S. state and local agencies.

Grass Valley's end-of-life product take back program assures proper disposal by use of Best Available Technology. This program accepts any Grass Valley branded equipment. Upon request, a Certificate of Recycling or a Certificate of Destruction, depending on the ultimate disposition of the product, can be sent to the requester.

Grass Valley will be responsible for all costs associated with recycling and disposal, including freight. However, you are responsible for the removal of the equipment from your facility and packing the equipment to make it ready for pickup.



For further information on the Grass Valley product take back system please contact Grass Valley at + 800 80 80 20 20 or +33 1 48 25 20 20 from most other countries. In the U.S. and Canada please call 800-547-8949, and ask to be connected to the EH&S Department. Additional information concerning the program can be found at: www.grassvalley.com/about/environmental-policy

001187401

Contents

- 8925DMB-B and 8925DMB-U
Release Notes** 5
 - Introduction 5
 - 8925DMB-B/-U Version 2.1.4 Software Overview 5
 - Software Updating 6
 - Preparing for Software Update 6
 - Recalling Factory Defaults After Update 6
 - Acquiring NetConfig 7
 - Acquiring Latest 8900NET (NetCard) Software 7
 - Acquiring 8925DMB-U/-B Update Files 7
 - NetConfig Software Update 8
 - Recall Factory Defaults 14
 - Updating Software with a MicroSD Card 15
 - Required Components 15
 - MicroSD Card Update Procedure 16

Version **2.1.4**

MAY 2011

8925DMB-B and 8925DMB-U Release Notes

Introduction

These release notes provide important information on the release of the latest software for the 8925DMB-B and 8925DMB-U modules. The 2.1.4 release provides updates from the previous software version 2.1.3.

These release notes contain the following sections:

- 8925DMB-B and -U Version 2.1.4 Software Overview
- Software Updating Procedures ([page 6](#))

8925DMB-B/-U Version 2.1.4 Software Overview

Version 2.1.4 features fixes the following issues for the 8925DMB-B and 8925DMB-U modules:

- When switching an SDI input with embedded Dolby E audio, there was a temporary audible audio mute and the audio status returned for a fraction of a second to PCM AES instead of Dolby E. A valid RP168 switch will no longer induce any audio mute (108894).
- Module could lock up when switching to a non-valid SDI input (113688).

Software Updating

There are two methods to update software: the Grass Valley PC application NetConfig (available from the Grass Valley web site free of charge) or using an microSD memory card (requires purchase of microSD memory card and adapter and USB card reader if required). Software loading times are somewhat shorter using the microSD method and multiple module type software update files can be loaded onto the microSD memory card for easy updating.

Note The microSD software updating method requires direct access to all modules in the frame being updated. With the NetConfig update for this release, the software can be loaded remotely over the network.

Preparing for Software Update

Software upgrade packages are available from the Grass Valley FTP site free of charge (in most cases). Software must be updated using the Grass Valley PC application NetConfig which is available free of charge or using a microSD card and card adapter purchased by the customer.

Recalling Factory Defaults After Update

After this new version of software is installed, you will need to recall factory default values to the module using the **Set Factory Defaults** and the **Set Factory Names** buttons on the 8925DMB User Settings web page. This will reset the module and ensure proper operation. However, this will also overwrite the current configuration with the factory defaults.

CAUTION Before updating, save your current configurations to offline files so you can recall them after the update. Also see Note below.

To save your configurations to an offline file, refer to [Figure 8 on page 14](#) for the User Settings web page. Refer the latest 8925DMB Instruction Manual for complete instructions on using this function if you have not saved files offline before. It is posted in PDF format at this location under Multiplexers/Demultiplexers:

www.grassvalley.com/docs/modular

Note If new operating parameters have been added to a software update, saving the configuration offline to a file may not recall properly due to new software structuring. In this case, take screen shots of the parameters or write down any complicated configurations before updating.

Acquiring NetConfig

You must have the NetConfig Networking Application running on a networked PC on the same subnet as the frame. If you do not have NetConfig or the latest version (2.0.12), you can download it free of charge from the Grass Valley ftp site at this URL:

<ftp://ftp.grassvalley.com/router/NetConfig/Version%202.0.12/>

1. Right-click on the latest NetConfig link to download the zipped file to the C:\temp folder or other convenient location on your PC.
2. Extract the zipped files onto your local drive:
3. Double-click on the NetConfig.EXE file to install NetConfig.

Note Installing NetConfig into the default location given in the install script (C:\Programs\Grass Valley Group) is recommended for future NetConfig and module software updates.

Acquiring Latest 8900NET (NetCard) Software

The latest version of 8900NET (Net Card) software should be running for best update results and full module functionality. 8900NET version 4.3.0 software is available free of charge from the Grass Valley ftp site at this location:

<ftp://ftp.grassvalley.com/modular/8900/8900net/v4.3.0/>

Acquiring 8925DMB-U/-B Update Files

Locate the latest 8925DMB module software on the Grass Valley ftp site at this URL:

<ftp://ftp.grassvalley.com/modular/8900/8925DMB/v2.1.4/>

If using NetConfig, download the following files to your PC for both the 8925DMB-U and -B:

- 8925DMB_2.1.4_Full_Pkg.xml
- 8925DMB_2.1.4_Full_Pkg.fld

If you will be using the microSD method, download the following files to your PC for both the 8925DMB-U and -B:

- 8925DMB_2.1.4_Full_Pkg_DC771007650.upd
- 8925DMB_2.1.4_Full_Pkg_DC5041.upd

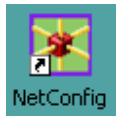
NetConfig Software Update

Follow the steps below to update the 8925DMB using NetConfig:

1. On your local C:\ drive, locate the NetConfig program directory. This directory is normally in the default location in C:\Program Files\Grass Valley Group\NetConfig.

If you have installed NetConfig in another location, find the location of the NetConfig directory by right-clicking on the NetConfig shortcut. Select **Properties** and note the location in the **Start In** field.

1. Copy the .xml and .fld files listed below that you downloaded from the FTP site into the main NetConfig directory.
 - 8925DMB_2.1.4_Full_Pkg.xml
 - 8925DMB_2.1.4_Full_Pkg.fld
2. In the main NetConfig directory, locate a folder named **modular**. If this folder does not exist, create a folder called **modular** in the main NetConfig directory.
3. Move the 8925DMB_2.1.4_Full_Pkg.fld file listed above in the main NetConfig directory into this **modular** directory.
4. Leave the 8925DMB_2.1.4_Full_Pkg.xml in the main NetConfig directory. Do not put this file in the **modular** folder.
5. Open NetConfig by double clicking on the NetConfig icon on your desktop.



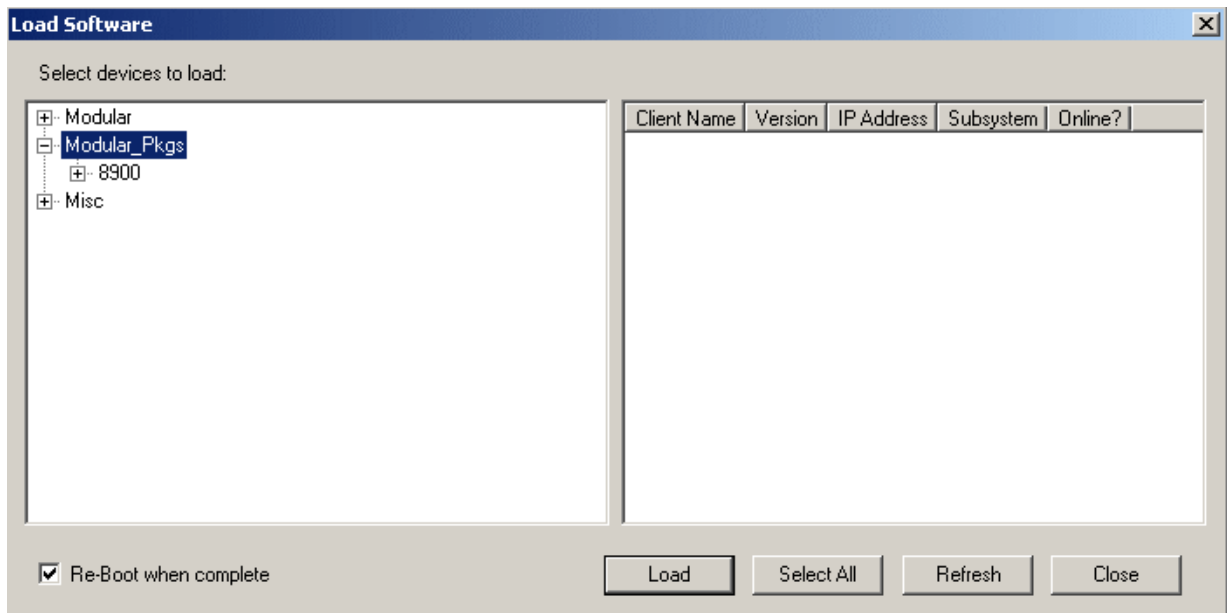
Note If you have not used NetConfig before, refer to the *NetConfig Instruction Manual* included during installation in the main NetConfig directory in PDF format (NetConfig.pdf).

6. Click on the **Load SW** button on the top of the NetConfig toolbar.
7. This will bring up the Load Software screen (Figure 1).
8. If you done previous software downloads, you may have a **Modular** and possibly a **Misc** directory, as well as the new **Modular_Pkgs** directory, as shown in Figure 1.

Note The latest NetConfig software updating uses .xml files in place of .sw2 files for an easier update. Older .sw2 files will still work with NetConfig.

9. For this update using the .xml method, open the **Modular_Pkgs** directory by selecting the +.
10. Now open the 8900 directory using the +.

Figure 1. NetConfig Software Update



11. Find and open the 8925DMB directory (8925DMB +). You will note there are two **Full_Pkg (2.1.4)** software files available as shown in [Figure 2](#). This is because there are 8925DMB modules with different device classes based on the microprocessor used on the module.

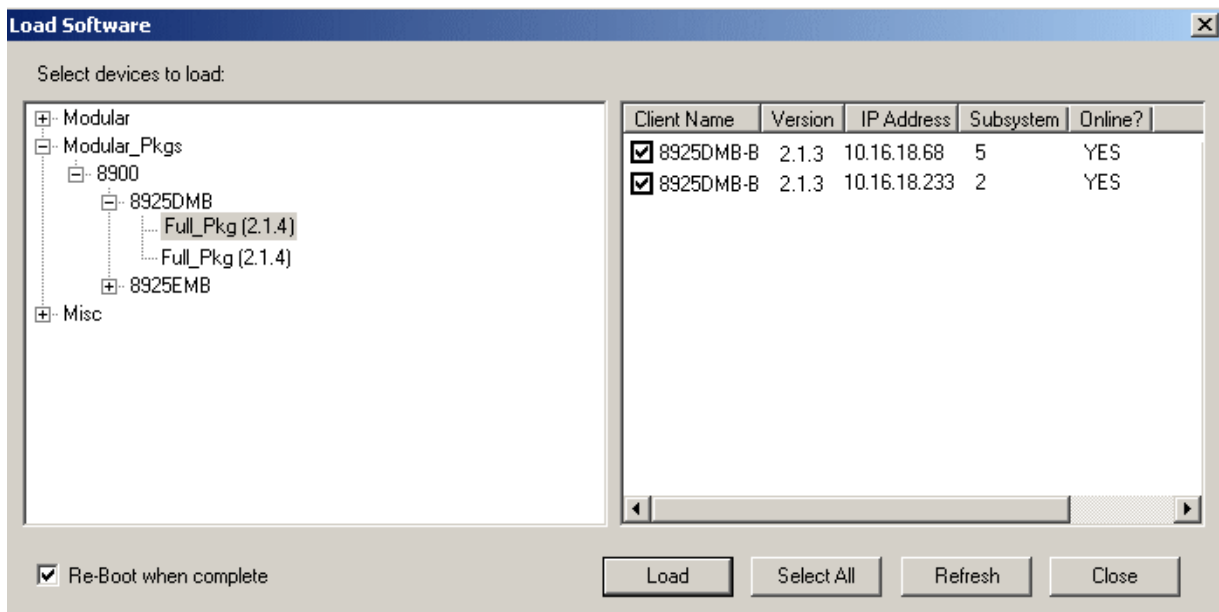
Note The .xml file will determine which modules will show up on the right by reading the device class.

12. Select the top **Full_Pkg (2.1.4)**. This will bring any of the 8925DMB-B and 8925DMB-U modules on your network with the device class associated with this software file. If there are no modules with this device class proceed to the second **Full_Pkg (2.1.4)** file in [Step 18](#) on [page 12](#).
13. Check the 8925DMB-B and 8925DMB-U module checkboxes you wish to update in the Client Name list. You may update all devices at once if desired by clicking on the **Select All** button at the bottom of the screen. Or you may only check the corresponding checkboxes only next to the specific modules you need to update.
14. Check the **Re-Boot when complete** checkbox in the lower left corner of the Load Software screen.

CAUTION Before loading the software, be sure you have read the information in [Recalling Factory Defaults After Update on page 6](#).

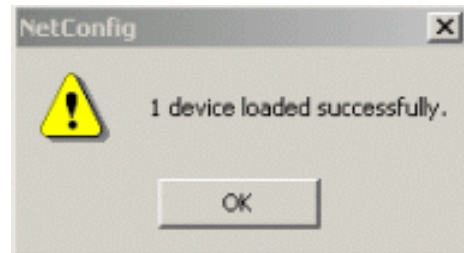
15. Select the **Load** button to update all selected modules. This will bring up a progress bar (not shown) showing software download status. Wait for the progress bar to finish.

Figure 2. First Device Class Software Update



16. If the upload has been successful, a pop-up screen similar to the one shown in [Figure 3](#) will appear.

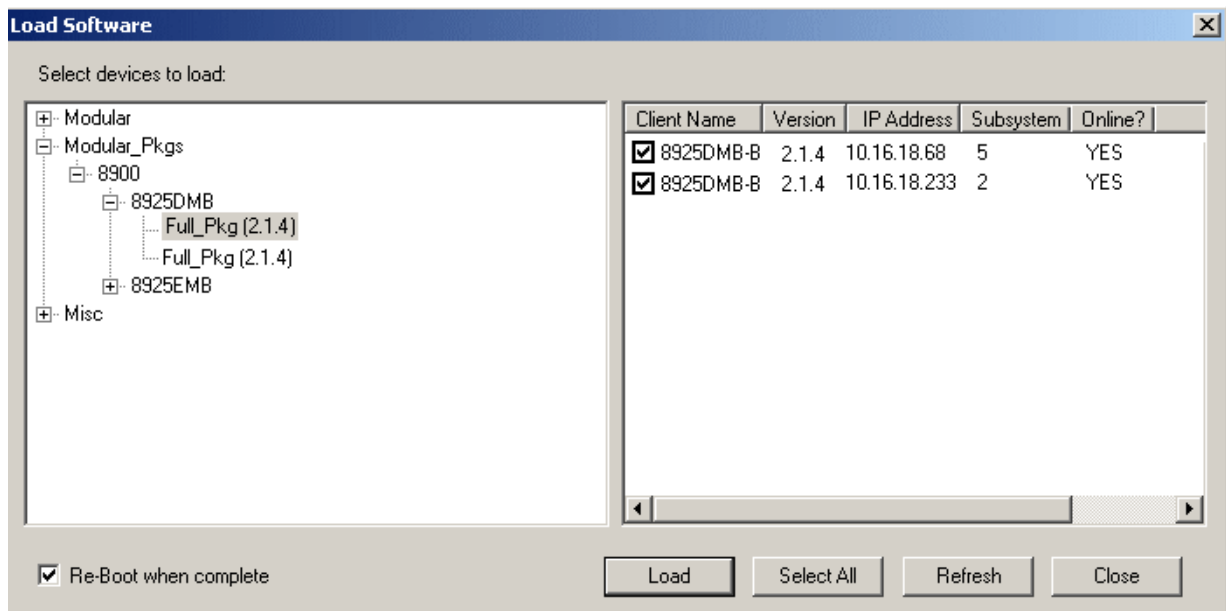
Figure 3. Load Successful Popup



17. When the software update has finished, check that the software version for each module in the Client Name list for this module device class is at version 2.1.4 as shown in [Figure 4](#).

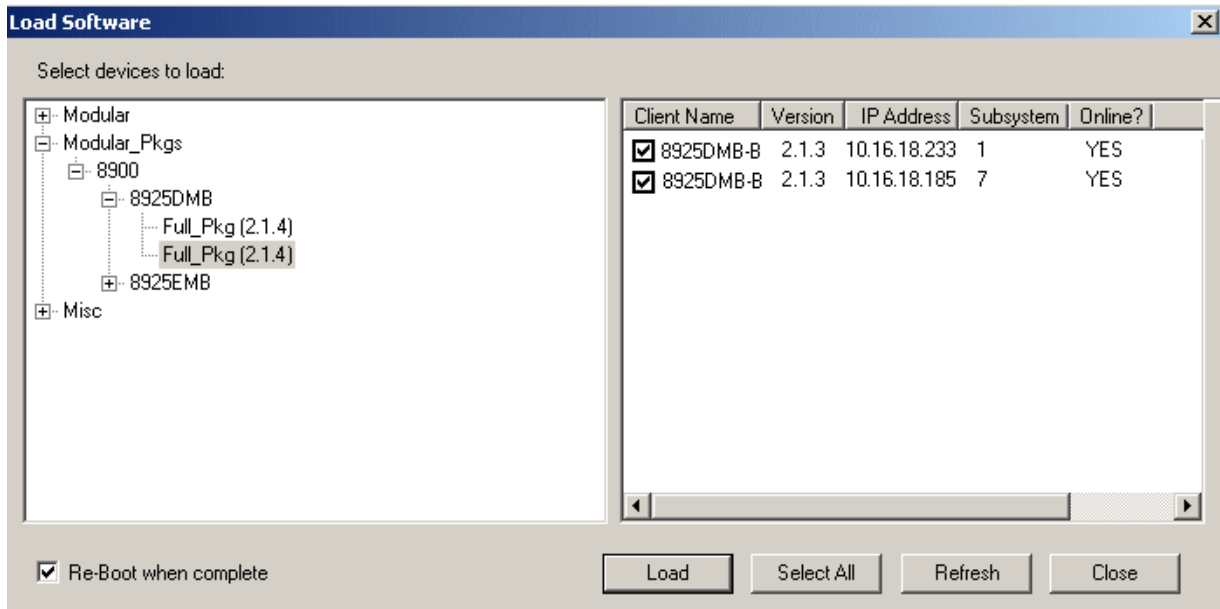
Also check the Status web page for each module for the correct software version as shown in [Figure 7 on page 13](#).

Figure 4. First Device Class Updated Software



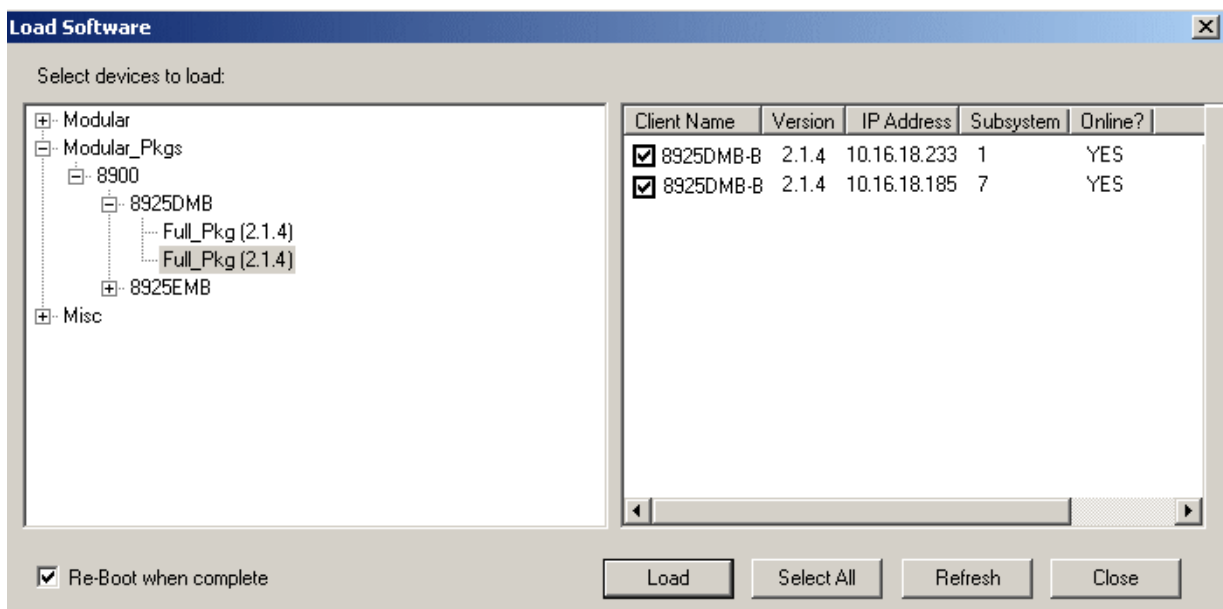
18. Now select the second **Full_Pkg (2.1.4)** selection and update the modules with this device class if they appear in the client list (Figure 5). The update steps are the same as given in Step 11 through Step 16 starting on page page 10.

Figure 5. Second Device Class Update





19. When the software update has finished, check that the software version for each module in the Client Name list for the second module device class is at version 2.1.4 as shown in Figure 6 and the Status web page shown in Figure 7 on page 13.

Figure 6. Second Device Class Update Complete



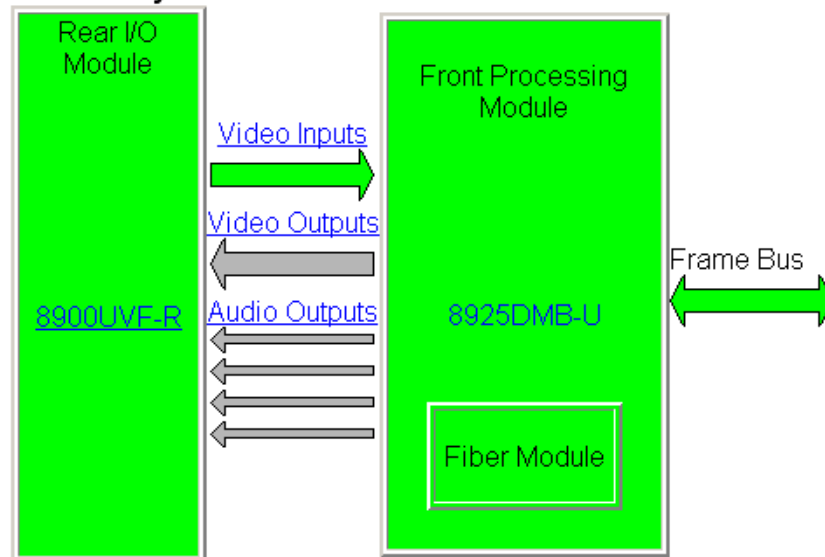
20. When all software updates have finished, check that the Front Module section of the Status web page matches [Figure 7](#).
21. Go to the 8925DMB User Settings web page and select the **Set Factory Defaults** and **Set Factory Names** buttons to reset the module for factory defaults to ensure proper operation. Reload your saved configuration files if required.
22. Verify proper operation of each updated module.

Figure 7. Status Web Page

 **Status** 

Model: [8925DMB-U](#) Description: [HD/SD Digital Audio De-Embedder](#)
 Frame Location: [not assigned](#) , Slot: [5](#)
 Input Video Standard: [SD 480i/59.94](#) Input Video: [Coax In : Present](#)
 Fiber Module Type: [Dual TX, 1310/1310 nm](#)

Module Physical Structure



Status:
 Front Module: [PASS](#)
 Rear Module: [PASS](#)
 Fiber Module: [PASS](#)

Front Module:
 Part Number: [771-0504-51A](#)
 Serial Number: [KB08252200](#)
 Hardware Revision: [51A](#)
 Firmware Version: [2.0.13](#)
 Software Version: [2.1.4](#)
 Boot Version: [2.0.1](#)
 Asset Tag:

Update successful

Recall Factory Defaults

Use
this——
link

- [System Config](#)
- [Video Input](#)
- [Audio De-Embedder](#)
- [Video Output](#)
- [User Settings](#)
- [Slot Config](#)

It is required after a software update to reset module parameters by linking to the User Settings web page ([Figure 8](#)) for each module that has been updated and select the **Set Factory Defaults** and **Set Factory Names** button. This will return the module to the factory default values and update the module with the new parameters for this release.

CAUTION The following step will reset all parameters to factory default parameters and names. Before doing this step, record your settings for each module by writing them down or taking screen shots, so you can reload your settings. Saved User Settings files will no longer match the current software structure when new parameters have been added. Refer to [Recalling Factory Defaults After Update on page 6](#).

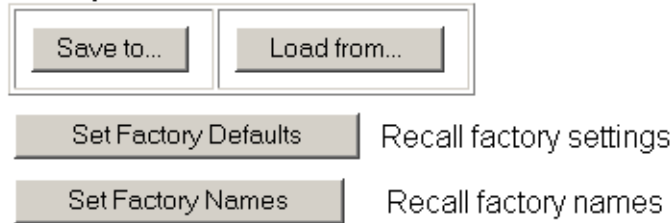
Figure 8. Recall Factory Settings and Names



User Settings 

Model: [8925DMB-U](#) Description: [HD/SD Digital Audio De-Embedder](#)
Frame Location: [not assigned](#) , Slot: [5](#)
Input Video Standard: [SD 480i/59.94](#) Input Video: [Coax In](#) : [Present](#)

File Operations



Recall factory settings

Recall factory names

Updating Software with a MicroSD Card

The 8925DMB modules have been equipped with a microSD socket (J2) located on the front of the module to accept a microSD flash memory card for updating software (Figure 9). Using this method requires the purchase of microSD hardware by the customer.

The microSD is a standard flash memory card format used in cell phone and digital cameras for storage. The benefit of this socket is to save time in loading software to modules and ease of software upload. However, it also requires direct access to the frame and cannot be done over the network.

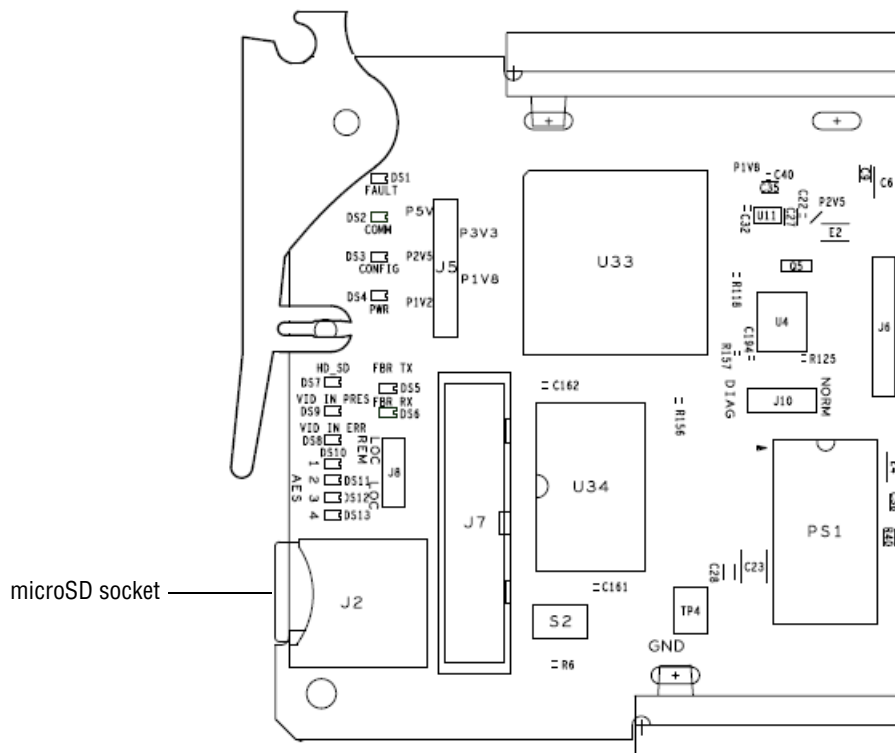
Required Components

The required components for doing this method are the following:

- USB SD/MMC card reader for connecting to a PC to load the .upd software file onto the microSD card in the adapter. Any type of card reader can be used.
- Any of the most popular microSD flash memory cards with less than 2Gb of memory and an adapter for connecting directly into the USB PC port or inserting into a card reader if required.

Note Using a memory card with more than 2Gb of memory has been shown to cause unexpected results and is not recommended.

Figure 9. MicroSD Socket



MicroSD Card Update Procedure

Follow the steps below to update your software. Be sure you have read the section, [Recalling Factory Defaults After Update on page 6](#) before performing this update.

Note Use standard anti-static precautions when handling these devices.

1. Locate the .upd files you have downloaded from the Grass Valley ftp site listed below:

- 8925DMB_2.1.4_Full_Pkg_DC771007650.upd
- 8925DMB_2.1.4_Full_Pkg_DC5041.upd

Note Different .upd files are required because there are 8925DMB modules with different device classes (DC) due to the use of different microprocessor types on the modules. The software update will pick the correct file based on the module device class it detects.

2. Slide the memory card into the memory card adapter.

3. Insert the adapter into the card reader (if required) with the adapter label facing up and snap the cover back into place.

4. Remove the cover from the USB connector end of the card reader and attach the USB card reader to a USB port on your PC.

5. Browse to this card reader drive device on your PC and copy the .upd files provided to the card reader drive.

Note You may have a number of different .upd files on the flash card but you may not have two of the exact same file name.

6. Remove the card reader from the PC USB port.

7. Remove the adapter from the card reader.

8. Carefully remove the memory card from the adapter, pull the 8925DMB module out of the frame and place the memory card into the socket on the front of the module so the label side is to the outside as shown in [Figure 10 on page 17](#).

9. Insert the module back into the frame to reboot and start the update process.

Note If the module does not recognize the microSD card or does not reboot, check for duplicate files in the directory or use the NetConfig method described in [NetConfig Software Update on page 8](#).

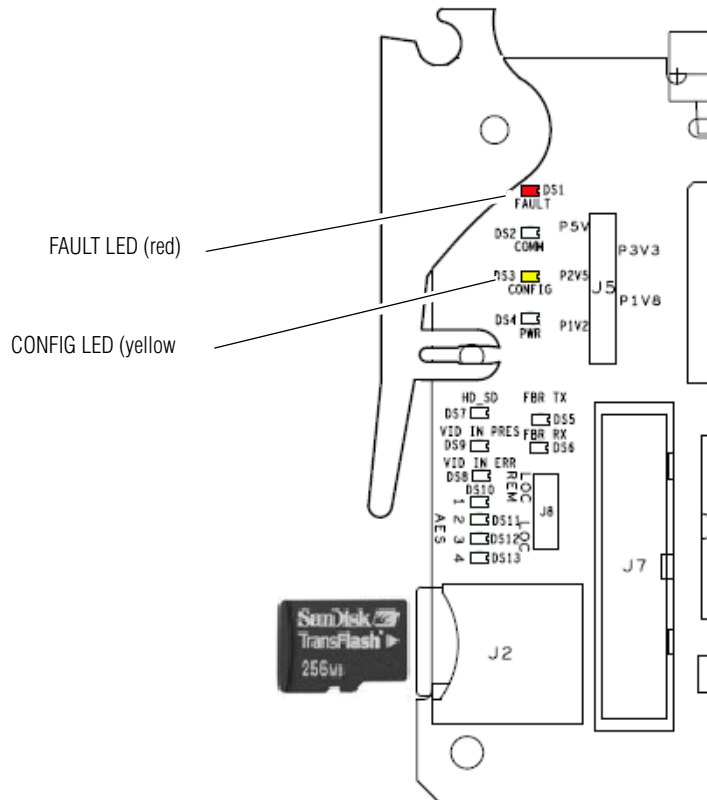
During the module reboot, when a memory card is inserted in the socket, the application will not be loaded to the module. The module will search the memory card for the correct file types and device class information and load these into the onboard flash memory. This process is automatic and requires no action on your part.

While the boot code is loading the update, the CONFIG LED (shown in [Figure 10](#)) on the module will indicate the progress. If the CONFIG LED is lit, the boot code is currently writing the update to flash.

If the FAULT LED begins flashing, a failure to update has occurred. A failure to update can occur when the memory card cannot be read (larger than 2Gb), no .upd files are found for the module's device class, or multiple files with the same file name are present.

When the CONFIG LED goes off, the update is complete. Remove the module, remove the memory card, and reinstall the module.

Figure 10. Insert Memory Card into Module Socket



10. Once the module has rebooted completely and the CONFIG LED is off, check that the Front Module section of the Status web page is similar to the one shown in [Figure 7 on page 13](#).
11. Go to the 8925DMB User Settings web page and select the **Set Factory Defaults** and **Set Factory Names** buttons ([Figure 8 on page 14](#)) to reset the module for factory defaults to ensure proper operation. Reload your saved configuration files if required.
12. Once software is updated, check for proper operation of each module.