



8945EDA/-D

HD EQUALIZING DISTRIBUTION AMPLIFIERS

Release Notes

Software Version 1.3.0

Contacting Grass Valley

International Support Centers	France 24 x 7	+800 8080 2020 or +33 1 48 25 20 20	United States/Canada 24 x 7	+1 800 547 8949 or +1 530 478 4148
Local Support Centers (available during normal business hours)	Asia	Hong Kong, Taiwan, Korea, Macau: +852 2531 3058 Indian Subcontinent: +91 22 24933476 Southeast Asia/Malaysia: +603 7805 3884 Southeast Asia/Singapore: +65 6379 1313 China: +861 0660 159 450 Japan: +81 3 5484 6868		
		Australia and New Zealand: +61 1300 721 495	Central/South America: +55 11 5509 3443	
		Middle East: +971 4 299 64 40 Near East and Africa: +800 8080 2020 or +33 1 48 25 20 20		
	Europe	Belarus, Russia, Tadzikistan, Ukraine, Uzbekistan: +7 095 2580924 225 Switzerland: +41 1 487 80 02 S. Europe/Italy-Roma: +39 06 87 20 35 28 -Milan: +39 02 48 41 46 58 S. Europe/Spain: +34 91 512 03 50 Benelux/Belgium: +32 (0) 2 334 90 30 Benelux/Netherlands: +31 (0) 35 62 38 42 1 N. Europe: +45 45 96 88 70 Germany, Austria, Eastern Europe: +49 6150 104 444 UK, Ireland, Israel: +44 118 923 0499		

Copyright © Grass Valley, Inc. All rights reserved.
This product may be covered by one or more U.S. and foreign patents.

Grass Valley Web Site

The www.grassvalley.com web site offers the following:

Online User Documentation — Current versions of product catalogs, brochures, data sheets, ordering guides, planning guides, manuals, and release notes in .pdf format can be downloaded.

FAQ Database — Solutions to problems and troubleshooting efforts can be found by searching our Frequently Asked Questions (FAQ) database.

Software Downloads — Download software updates, drivers, and patches.



END-OF-LIFE PRODUCT RECYCLING NOTICE

Grass Valley's innovation and excellence in product design also extends to the programs we've established to manage the recycling of our products. Grass Valley has developed a comprehensive end-of-life product take back program for recycle or disposal of end-of-life products. Our program meets the requirements of the European Union's WEEE Directive, the United States Environmental Protection Agency, and U.S. state and local agencies.

Grass Valley's end-of-life product take back program assures proper disposal by use of Best Available Technology. This program accepts any Grass Valley branded equipment. Upon request, a Certificate of Recycling or a Certificate of Destruction, depending on the ultimate disposition of the product, can be sent to the requester.

Grass Valley will be responsible for all costs associated with recycling and disposal, including freight. However, you are responsible for the removal of the equipment from your facility and packing the equipment to make it ready for pickup.



For further information on the Grass Valley product take back system please contact Grass Valley at + 800 80 80 20 20 or +33 1 48 25 20 20 from most other countries. In the U.S. and Canada please call 800-547-8949 or 530-478-4148, and ask to be connected to the EH&S Department. Additional information concerning the program can be found at: www.thomsongrassvalley.com/environment



Contents

- Introduction 5
- 8945EDA/-D Version 1.3.0 Software Overview 5
- Software Updating 7
- Acquiring NetConfig Application 7
- Acquiring 8900NET Software 7
- Acquiring 8945EDA and 8945EDA-D Software 8
- Updating Software with NetConfig 8
- Update 8945EDA Modules 10
- Update 8945EDA-D Modules 14

Version **1.3.0**
AUGUST 2010

8945EDA/-D HD/SD Equalizing DA Release Notes

Introduction

These release notes provide important information and software updating instructions for the latest release of 8945EDA and 8945EDA-D module software, version 1.3.0. This update takes the 8945EDA module from version 1.0.0 to 1.3.0.

8945EDA/-D Version 1.3.0 Software Overview

Version 1.3.0 features the following new enhancements for both modules:

- Allows use of updated RoHS compliant modules (108525)
- Improves internal module reliability of 8945EDA-D (107966)

Version 1.3.0 features the following new enhancements for the 8945EDA-D:

- Previously, SNMP reporting would report an error for either DA1 or DA2 and the user could not tell which DA had the error. Now the user can enter a name for DA1 and a name for DA2 and the SNMP status reporting will report the DA with an error by name. Refer to the Settings web page for the 8945EDA-D in [Figure 1 on page 6](#).

Figure 1. 8945EDA-D Settings Web Page



Model: 8945EDA-D Description: HD Dual EqualizingDA

Frame Location: lab, Slot: 7

DA1 and DA2 now
have separate
Input Reporting

	DA 1	DA 2
Routing Mode	DA Outputs J1,J3,J5,J7	DA Outputs J2,J4,J6,J8
Coax In 1 J9	<input checked="" type="radio"/>	<input type="radio"/>
Coax In 2 J10	<input type="radio"/>	<input checked="" type="radio"/>
Coax In 1 J9 Signal Name		<input type="text" value="Coax In1 J9"/>
Coax In 1 J10 Signal Name		<input type="text" value="Coax In2 J10"/>
Input Reporting	<input type="text" value="Enable"/> ▾	<input type="text" value="Enable"/> ▾
Equalizer Mode	<input type="text" value="Active"/> ▾	<input type="text" value="Active"/> ▾
Signal Format	<input type="radio"/> SD/ASI <input checked="" type="radio"/> HD	<input type="radio"/> SD/ASI <input checked="" type="radio"/> HD
Carrier Detect	Present	Present

Software Updating

For software updating, the Grass Valley PC application NetConfig (software version 2.0.10 or later) is required. This update also requires an 8900NET (Net Card) module running the latest version software 4.3.0 installed in the GeckoFlex frame during the software update.

Acquiring NetConfig Application

The NetConfig networking application is a highly versatile tool for both software updating and accessing modular and other Grass Valley products on the network to view status and set module parameters. If you do not have NetConfig or the latest version as of this printing (version 2.0.10), you can download it free of charge from the Grass Valley ftp site at this URL:

<ftp://ftp.grassvalley.com/router/NetConfig/Version%202.0.10/>

1. Right-click on the latest NetConfig link to download the zipped file to a folder on your local PC.
2. Extract the zipped files onto your local drive.
3. Double-click on the NetConfig.exe file to install NetConfig.

Note Installing NetConfig into the default location given in the install script (C:\Programs\Grass Valley Group) is recommended for future NetConfig and module software updates.

Acquiring 8900NET Software

The latest version of 8900NET (Net Card) software required for this update (version 4.3.0) is available from the Grass Valley ftp site free of charge at the following URL:

<ftp://ftp.grassvalley.com/modular/8900/8900NET>

To download the latest 8900NET software, do the following:

4. Select the 8900 Series link.
5. Select the link to the latest 8900NET Interface module software.
6. If you are updating from an earlier version than 3.2.0, use the .bin file and the FTP Server procedure described in detail in the *8900NET Instruction Manual* available on-line.
7. Use the NetConfig Networking Application option to update from version 3.2.2 to version 4.3.0 with the .fld file.

Acquiring 8945EDA and 8945EDA-D Software

1. The latest 8945EDA and -D module software update files are available on the Grass Valley ftp site at this URL:

<ftp://ftp.grassvalley.com/modular/8900/8945EDA/>

2. Copy the 8945EDA and/or 8945EDA-D .xml and .fld files listed below onto your PC from the ftp site.
 - 8945EDA_v1.3.0.xml
 - 8945EDA_1.3.0.fld
 - 8945EDA-D_SW_v1.3.0.xml
 - 8945EDA_D_1.3.0.fld

with any new parameters that have been added.

CAUTION Be sure to record your current settings on each module before updating software. Write down parameters or take screen shots of your web pages as you will have to reload all previous settings.

Updating Software with NetConfig

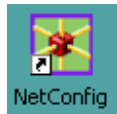
To update with NetConfig make sure you have the following:

- PC with NetConfig Networking application at version 2.0.10 or later installed (version 2.0.10 is the latest version available) (see [Acquiring NetConfig Application on page 7](#)),
- An 8900NET (Net Card) module in the frame running version 4.3.0 or later software (see [Acquiring 8900NET Software on page 7](#)),
- The 8945EDA and/or 8945EDA-D software update files for version 1.3.0 (see [Acquiring 8945EDA and 8945EDA-D Software on page 8](#)), and
- IP connection between the GeckoFlex frame and your PC.

1. On your local C:\ drive, locate the NetConfig program directory. This directory is normally in the default location in C:\Program Files\Grass Valley Group\NetConfig.

Note If you have installed NetConfig in another location, find the location of the NetConfig directory by right-clicking on the NetConfig shortcut. Select **Properties** and note the location in the **Start In** field.

2. Move the required .xml and .fld files listed below you downloaded onto your PC into the main NetConfig directory.
 - 8945EDA_v1.3.0.xml
 - 8945EDA_1.3.0.fld
 - 8945EDA-D_SW_v1.3.0.xml
 - 8945EDA_D_1.3.0.fld
3. In the main NetConfig directory, locate a folder named **modular**. If this folder does not exist, create a folder called **modular** in the main NetConfig directory.
4. Move the .fld file(s) from the main NetConfig directory into this **modular** directory.
5. Make sure the .xml file(s) remains in the main NetConfig directory, not the **modular** folder.
6. Open NetConfig by double clicking on the NetConfig icon on your desktop.

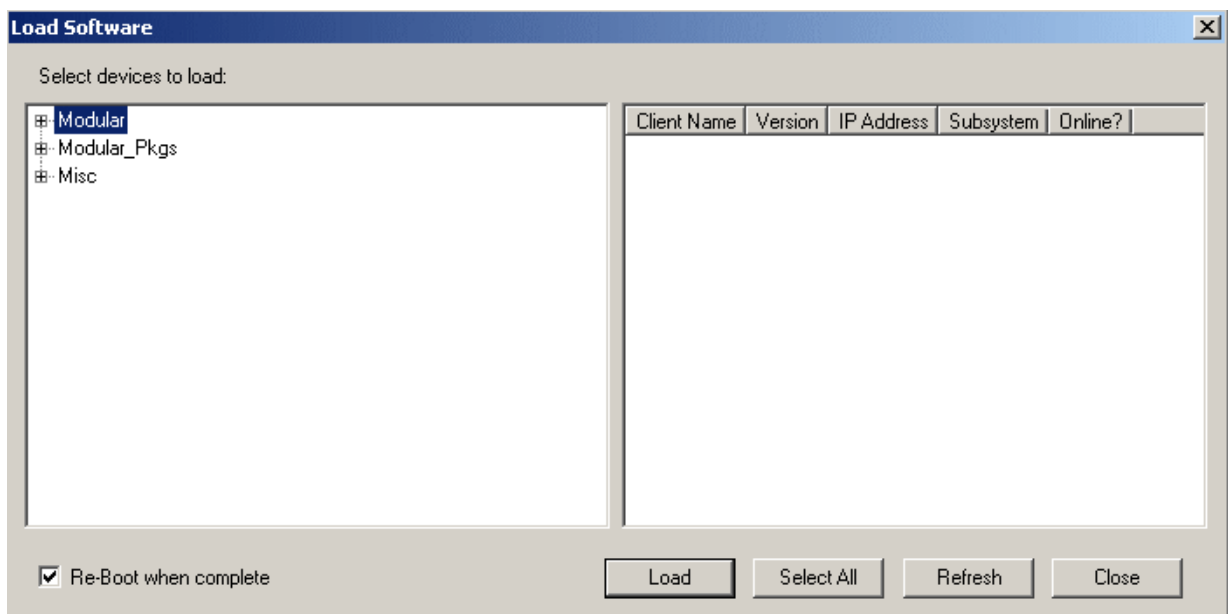


Note If you have not used NetConfig before, refer to the *NetConfig Instruction Manual* included during installation in the main NetConfig directory in PDF format (NetConfig.pdf).



7. Click on the **Load SW** button on the top of the NetConfig toolbar.
8. This will bring up the NetConfig Load Software screen ([Figure 2](#)).

Figure 2. NetConfig Main Software Load Screen



9. If you done previous software downloads for Grass Valley products, you may have a **Modular**, a **Modular_Pkgs**, and possibly a **Misc** directory, and possibly router and other products listed on the left.
10. For this update, open the **Modular_Pkgs** directory by selecting the +.

Refer to the following pages for the update procedures:

- [Update 8945EDA Modules on page 10](#)
- [Update 8945EDA-D Modules on page 14](#)

After updating, check for proper module operation.

Update 8945EDA Modules

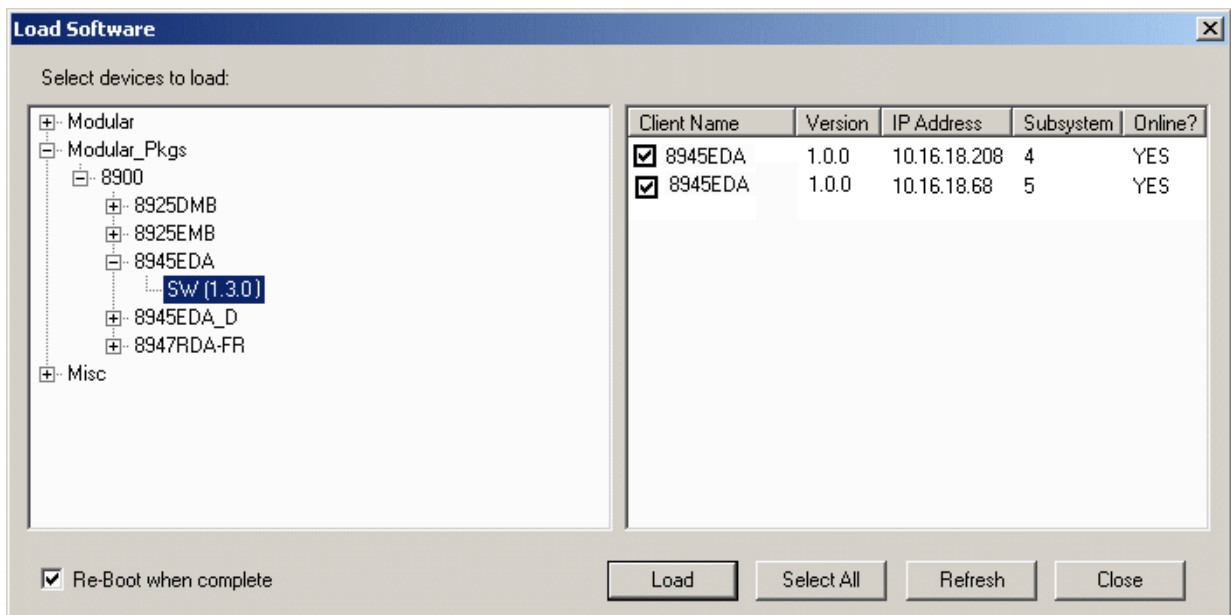
1. To update the 8945EDA modules, In the **Modular_Pkgs** directory open the 8900 directory, then the 8945EDA directory as shown in [Figure 3](#).

Note Software versions displayed may vary depending on when the modules were last updated or purchased.

2. Click on the **SW(1.3.0)** selection to bring up all of the 8945EDA modules on the network in the Client Name list on the right.
3. Check the 8945EDA module checkboxes you wish to update in the Client Name list. You may update all devices at once if desired by clicking on the **Select All** button at the bottom of the screen. Or you may only check the corresponding checkboxes only next to the specific modules you need to update.
4. Check the **Re-Boot when complete** checkbox in the lower left corner of the Load Software screen.

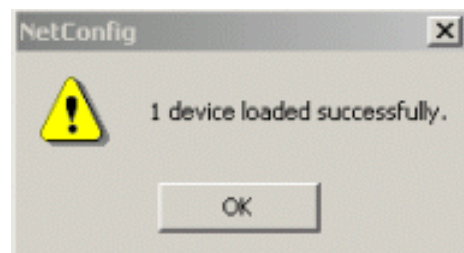
Note Please read the **Caution** on page [page 8](#), before updating software.

Figure 3. Modular_Pkgs with 8945RDA Directory



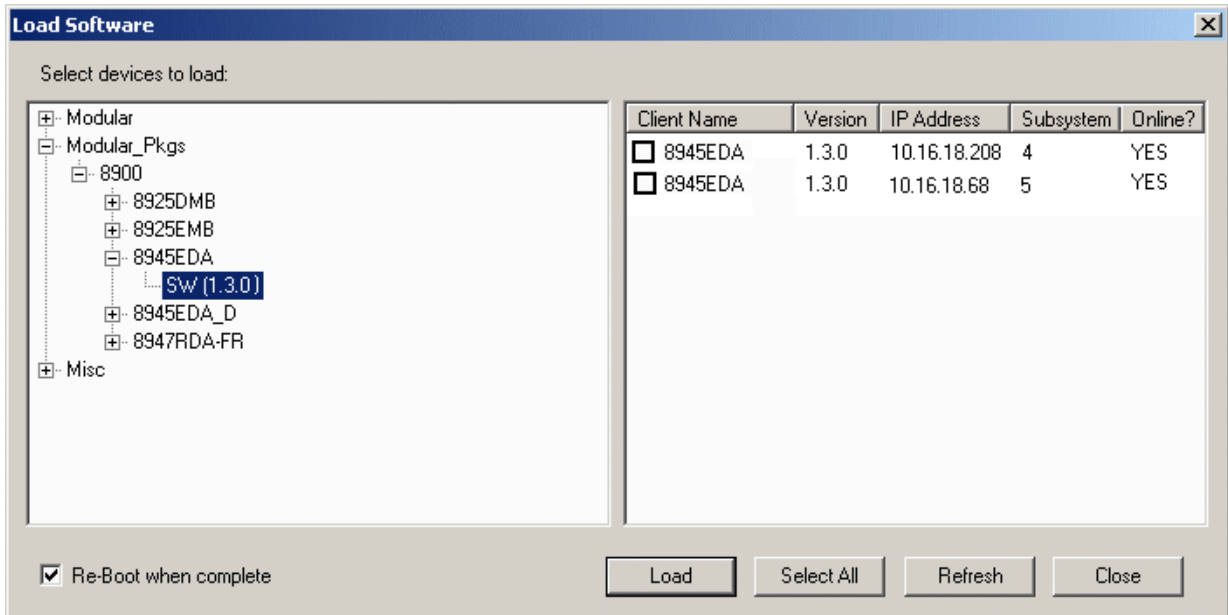
5. Select the **Load** button to update all selected modules with the software update. This will bring up a progress bar (not shown) showing software download status. Wait for the progress bar to finish.
6. When the upload has been successful, a pop-up screen similar to the one shown in [Figure 4](#) will appear.

Figure 4. Load Successful Popup




7. When the software update is complete, return to the NetConfig Load Software page and check that the software version for each module is now at 1.3.0.

Figure 5. Software Updated

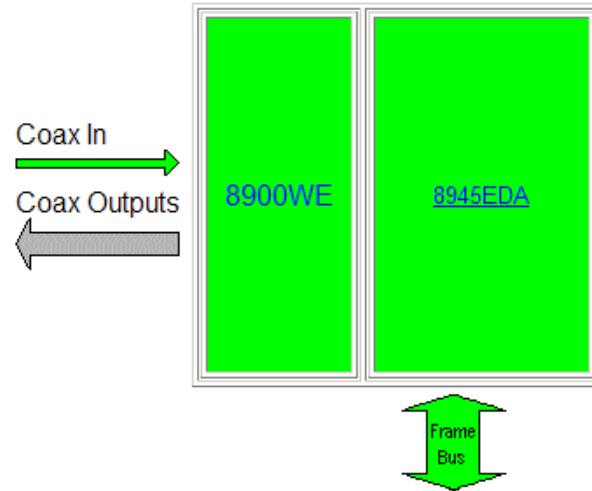


8. Also check the version on each 8945EDA Status web page is updated for each module as shown in [Figure 6 on page 13](#).

Figure 6. 8945EDA Status Web Page

 **Status** 
Model: [8945EDA](#) Description: [HD Equalizing DA](#)
Frame Location: [lab](#), Slot: [1](#)

Gecko Flex Module Physical Structure



Software version updated

Part Number: 671-6696-30
Serial Number: RN05420102
Hardware Revision: A
Software Version: 1.3.0
Asset Tag:

Update 8945EDA-D Modules

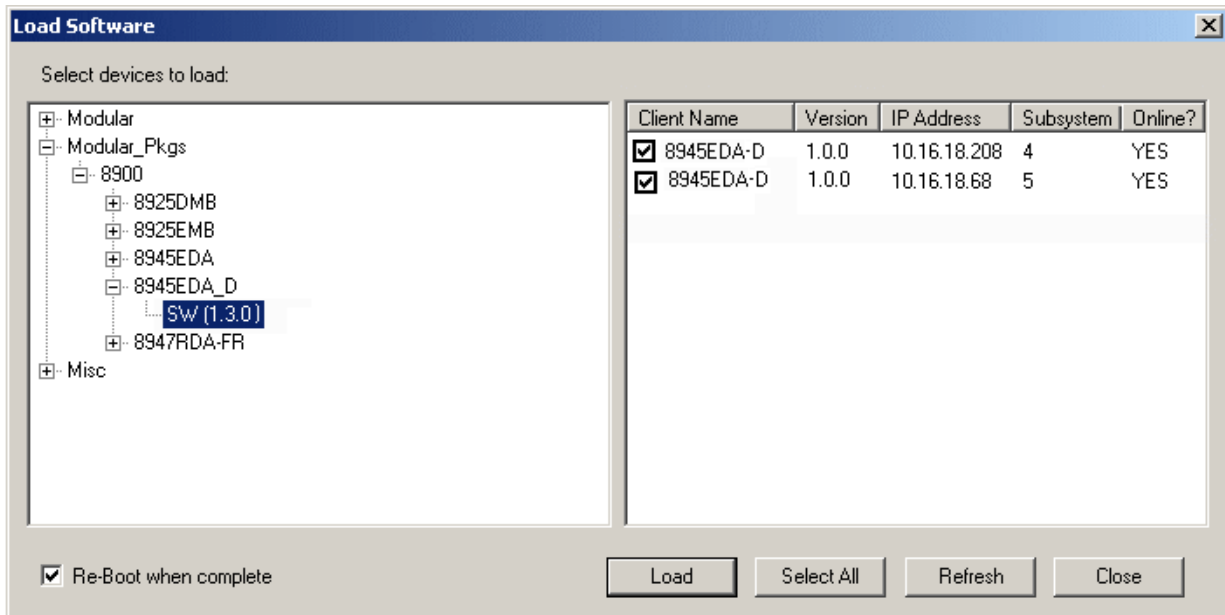
1. To update the 8945EDA-D modules, In the **Modular_Pkgs** directory open the 8900 directory, then the 8945EDA-D directory as shown in [Figure 7](#).

Note Software versions displayed may vary depending on when the modules were last updated or purchased.

2. Click on the **SW(1.3.0)** selection to bring up all of the 8945EDA-D modules on the network in the Client Name list on the right.
3. Check the 8945EDA-D module checkboxes you wish to update in the Client Name list. You may update all devices at once if desired by clicking on the **Select All** button at the bottom of the screen. Or you may only check the corresponding checkboxes only next to the specific modules you need to update.
4. Check the **Re-Boot when complete** checkbox in the lower left corner of the Load Software screen.

Note Please read the **Caution** on [page 8](#), before updating software.

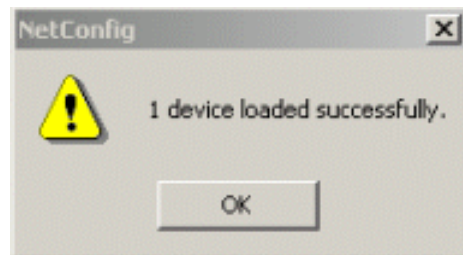
Figure 7. Modular_Pkgs with 8945EDA-D Directory



5. Select the **Load** button to update all selected modules with the software update. This will bring up a progress bar (not shown) showing software download status. Wait for the progress bar to finish.

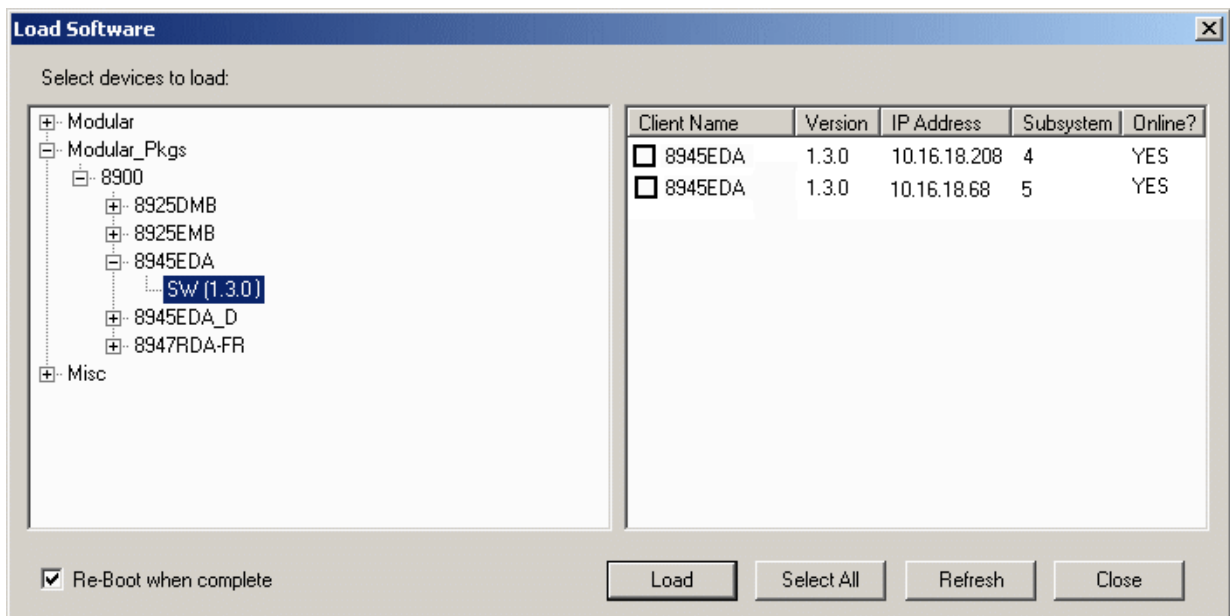
- When the upload has been successful, a pop-up screen similar to the one shown in [Figure 8](#) will appear.

Figure 8. Load Successful Popup



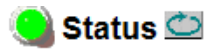
- When the software update is complete, return to the NetConfig Load Software page and check that the software version for each module is now at 1.3.0 as shown in [Figure 9](#).

Figure 9. Software Updated



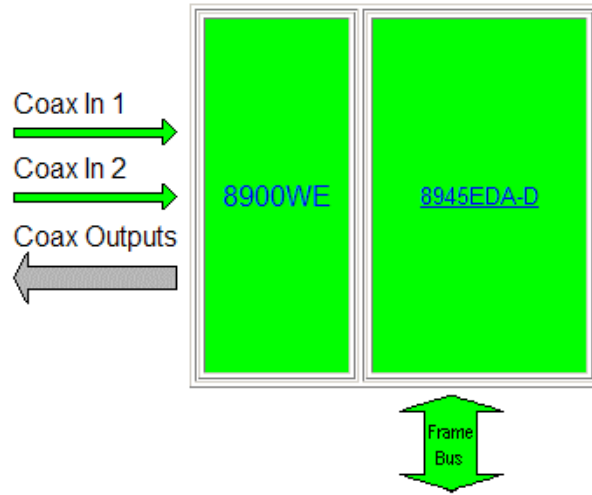
- Also check the version on each 8945EDA Status web page is updated for each module as shown in [Figure 10 on page 16](#).

Figure 10. 8945EDA Status Web Page



Model: [8945EDA-D](#) Description: [HD Dual EqualizingDA](#)
Frame Location: [lab](#), Slot: [7](#)

Gecko Flex Module Physical Structure



Part Number: 671-6696-40
Serial Number: RN05420098
Hardware Revision: B
Software Version: 1.3.0
Asset Tag:

Software version updated

