



8947RDA-D/FR

SD/HD FIBER READY RECLOCKING DA

Release Notes

Software Version 1.3.1

Contacting Grass Valley

International Support Centers	France 24 x 7	+800 8080 2020 or +33 1 48 25 20 20	United States/Canada 24 x 7	+1 800 547 8949 or +1 530 478 4148
Local Support Centers (available during normal business hours)	Asia	Hong Kong, Taiwan, Korea, Macau: +852 2531 3058 Indian Subcontinent: +91 22 24933476 Southeast Asia/Malaysia: +603 7805 3884 Southeast Asia/Singapore: +65 6379 1313 China: +861 0660 159 450 Japan: +81 3 5484 6868		
		Australia and New Zealand: +61 1300 721 495	Central/South America: +55 11 5509 3443	
		Middle East: +971 4 299 64 40 Near East and Africa: +800 8080 2020 or +33 1 48 25 20 20		
	Europe	Belarus, Russia, Tadzikistan, Ukraine, Uzbekistan: +7 095 2580924 225 Switzerland: +41 1 487 80 02 S. Europe/Italy-Roma: +39 06 87 20 35 28 -Milan: +39 02 48 41 46 58 S. Europe/Spain: +34 91 512 03 50 Benelux/Belgium: +32 (0) 2 334 90 30 Benelux/Netherlands: +31 (0) 35 62 38 42 1 N. Europe: +45 45 96 88 70 Germany, Austria, Eastern Europe: +49 6150 104 444 UK, Ireland, Israel: +44 118 923 0499		

Copyright © Grass Valley USA, LLC. All rights reserved.

This product may be covered by one or more U.S. and foreign patents.

Grass Valley Web Site

The www.grassvalley.com web site offers the following:

Online User Documentation — Current versions of product catalogs, brochures, data sheets, ordering guides, planning guides, manuals, and release notes in .pdf format can be downloaded.

FAQ Database — Solutions to problems and troubleshooting efforts can be found by searching our Frequently Asked Questions (FAQ) database.

Software Downloads — Download software updates, drivers, and patches.



END-OF-LIFE PRODUCT RECYCLING NOTICE

Grass Valley's innovation and excellence in product design also extends to the programs we've established to manage the recycling of our products. Grass Valley has developed a comprehensive end-of-life product take back program for recycle or disposal of end-of-life products. Our program meets the requirements of the European Union's WEEE Directive, the United States Environmental Protection Agency, and U.S. state and local agencies.

Grass Valley's end-of-life product take back program assures proper disposal by use of Best Available Technology. This program accepts any Grass Valley branded equipment. Upon request, a Certificate of Recycling or a Certificate of Destruction, depending on the ultimate disposition of the product, can be sent to the requester.

Grass Valley will be responsible for all costs associated with recycling and disposal, including freight. However, you are responsible for the removal of the equipment from your facility and packing the equipment to make it ready for pickup.



For further information on the Grass Valley product take back system please contact Grass Valley at + 800 80 80 20 20 or +33 1 48 25 20 20 from most other countries. In the U.S. and Canada please call 800-547-8949, and ask to be connected to the EH&S Department. Additional information concerning the program can be found at: www.grassvalley.com/about/environmental-policy

001187401

Contents

- 8947RDA-D/FR SD/HD Reclocking DA Release Notes 5**
- Introduction 5
- 8947RDA-D/-FR Version 1.3.1 Software Overview 5
- Software Updating 6
- Acquiring NetConfig Application 6
- Acquiring 8900NET Software 6
- Acquiring 8947RDA Software 7
- 8947RDA-FR 1.3.1 Software 7
- 8947RDA-D 1.3.1 Software 7
- Updating Software with NetConfig 7
- Updating 8947RDA-FR 8
- Updating 8947RDA-D 11

8947RDA-D/FR SD/HD Reclocking DA Release Notes

Introduction

These release notes provide important information and software updating instructions for the latest release of 8947RDA-D and 8947RDA-FR module software version 1.3.1. This update takes the 8947RDA-D modules from version 1.0.0 to 1.3.1 and the 8947RDA-FR modules from version 1.2.0 to 1.3.1.

8947RDA-D/-FR Version 1.3.1 Software Overview

Version 1.3.1 features the following software improvements for the 8947RDA-D and -FR modules:

- The user is now able to enter both DA1 and DA2 signal names for identification of individual upstream SNMP reporting (107396)
- This update improves internal reliability of the module (107966)

Version 1.3.1 also updates the software to work with the following new fiber optic SFP devices:

- SFP-13103G-M2DTX (Dual Transmitter)
- SFP-13103G-M1DRX (Dual Receiver)
- SFP-13103G-M1TRX (Transceiver)

Note The previous Release Notes (071-8652-01) listed the Dual Transmitter Fiber Optic SFP device part number for use on this module incorrectly as SFP-13103G-M1DTX. Only the SFP-13103G-M2DTX model can be used.

Older version fiber optic devices (1310NM-DRL, 1310NM-DTL, and 1310NM-TRL) can still be used with this software, but the newer version SFP devices can only be used when version 1.3.1 is installed on the 8947RDA-FR.

Software Updating

For software updating, the Grass Valley PC application NetConfig (software version 2.0.12 or later) is required. This update also requires an 8900NET (Net Card) module running the latest version software 4.3.0 installed in the GeckoFlex frame during the software update.

Acquiring NetConfig Application

The NetConfig networking application is a highly versatile tool for both software updating and accessing modular and other Grass Valley products on the network to view status and set module parameters. If you do not have NetConfig or the latest version as of this printing (version 2.0.12), you can download it free of charge from the Grass Valley ftp site at this URL:

<ftp://ftp.grassvalley.com/router/NetConfig/Version%202.0.12/>

1. Right-click on the latest NetConfig link to download the zipped file to a folder on your local PC.
2. Extract the zipped files onto your local drive.
3. Double-click on the NetConfig.exe file to install NetConfig.

Note Installing NetConfig into the default location given in the install script (C:\Programs\Grass Valley Group) is recommended for future NetConfig and module software updates.

Acquiring 8900NET Software

The latest version of 8900NET (Net Card) software required for this update (version 4.3.0) is available from the Grass Valley ftp site free of charge at the following URL:

<ftp://ftp.grassvalley.com/modular/8900/8900net/v4.3.0/>

To download the latest 8900NET software, do the following:

4. Select the 8900 Series link.
5. Select the link to the latest 8900NET Interface module software.
6. If you are updating from an earlier version than 3.2.0, use the .bin file and the FTP Server procedure described in detail in the *8900NET Instruction Manual* available on-line.
7. Use the NetConfig Networking Application option to update from version 3.2.2 to version 4.3.0 with the .fld file.

Acquiring 8947RDA Software

The 8947RDA-D and 8947RDA-FR have separate software files as listed below.

8947RDA-FR 1.3.1 Software

1. Locate the version 1.3.1 8947RDA-FR module software update files on the Grass Valley ftp site at this URL:

<ftp://ftp.grassvalley.com/modular/8900/8947RDA/8947RDA-FR/>

2. Copy the .xml and .fld files listed below onto your PC from the ftp site.
 - 8947RDA-FR_1.3.1.xml
 - 8947RDA-FR_1.3.1.fld

8947RDA-D 1.3.1 Software

1. Locate the version 1.3.1 8947RDA-D module software update files on the Grass Valley ftp site at this URL:

<ftp://ftp.grassvalley.com/modular/8900/8947RDA/8947RDA-D/>

2. Copy the .xml and .fld files listed below onto your PC from the ftp site.
 - 080851901.xml
 - 080851901.fld

Updating Software with NetConfig

To update with NetConfig make sure you have the following:

- PC with NetConfig Networking application at version 2.0.12 or later installed (version 2.0.12 is the latest version available) (see [Acquiring NetConfig Application on page 6](#)),
- An 8900NET (Net Card) module in the frame running version 4.3.0 or later software (see [Acquiring 8900NET Software on page 6](#)),
- The 8947RDA-D/FR software update files for version 1.3.1 (see [Acquiring 8947RDA Software on page 7](#)), and
- IP connection between the GeckoFlex frame and your PC.

Updating 8947RDA-FR

Follow the instructions below for updating the 8947RDA-FR:

1. On your local C:\ drive, locate the NetConfig program directory. This directory is normally in the default location in C:\Program Files\Grass Valley Group\NetConfig.

Note If you have installed NetConfig in another location, find the location of the NetConfig directory by right-clicking on the NetConfig shortcut. Select **Properties** and note the location in the **Start In** field.

2. Move the .xml and .fld files listed below you downloaded onto your PC for the 8947RDA-FR into the main NetConfig directory.

- 8947RDA-FR_1.3.1.xml
- 8947RDA-FR_1.3.1.fld

3. In the main NetConfig directory, locate a folder named **modular**. If this folder does not exist, create a folder called **modular** in the main NetConfig directory.

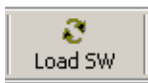
4. Move the .fld file from the main NetConfig directory into this **modular** directory.

5. Make sure the .xml file remains in the main NetConfig directory, not the **modular** folder.



6. Open NetConfig by double clicking on the NetConfig icon on your desktop.

Note If you have not used NetConfig before, refer to the *NetConfig Instruction Manual* included during installation in the main NetConfig directory in PDF format (NetConfig.pdf).



7. Click on the **Load SW** button on the top of the NetConfig toolbar.

8. This will bring up the NetConfig Load Software screen ([Figure 1 on page 9](#)).

9. If you done previous software downloads for Grass Valley products, you may have a **Modular**, a **Modular_Pkgs**, and possibly a **Misc** directory, and possibly router and other products listed on the left.

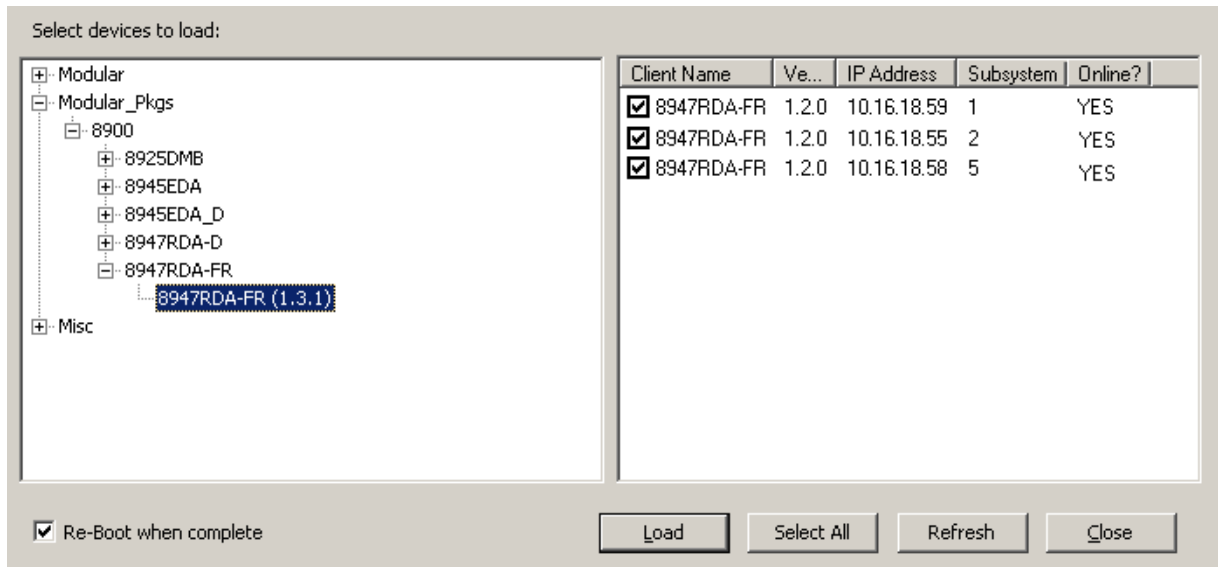
10. For this update, open the **Modular** directory by selecting the +.

11. Open the **Modular_Pkgs** directory by selecting the +, then open the 8947RDA-FR directory.

Note Software versions displayed may vary depending on when the modules were last updated or purchased.

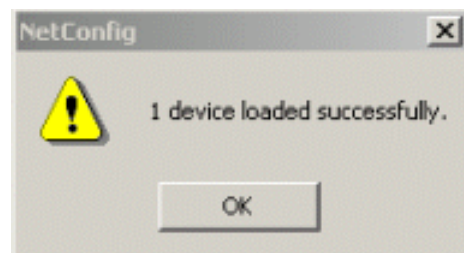
12. Click on the **8947RDA-FR (1.3.1)** selection to bring up all of the 8947RDA-FR modules on the network.

Figure 1. NetConfig Load Software Screen





13. Check the 8947RDA-FR module checkboxes you wish to update in the Client Name list. You may update all devices at once if desired by clicking on the **Select All** button at the bottom of the screen. Or you may only check the corresponding checkboxes only next to the specific modules you need to update.
14. Check the **Re-Boot when complete** checkbox in the lower left corner of the Load Software screen.
15. Select the **Load** button to update all selected modules with the software update. This will bring up a progress bar (not shown) showing software download status. Wait for the progress bar to finish.
16. When the upload has been successful, a pop-up screen similar to the one shown in [Figure 2](#) will appear.

Figure 2. Load Successful Popup



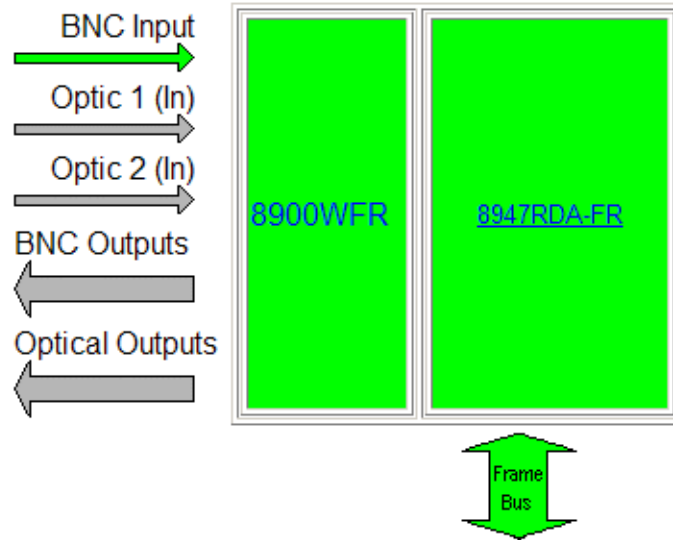
17. When the software update is complete, check that the software version for each module on the 8947RDA-FR Status web page is updated for each module as shown in [Figure 3 on page 10](#).

Figure 3. 8947RDA-FR Status Web Page

 **Status** 

Model: 8947RDA-FR Description: HD ReclckDA FiberRdy
Frame Location: not assigned , Slot: 7

Gecko Flex Module Physical Structure



Optic Device: MISSING

Applies to part numbers:
671-6696-10 and
771-0236-10

Software version updated

Part Number: 671-6696-10
Serial Number: KB08420552
Hardware Revision: D
Software Version: 1.3.1
Asset Tag:

Updating 8947RDA-D

Follow the instructions below for updating the 8947RDA-D:

1. On your local C:\ drive, locate the NetConfig program directory. This directory is normally in the default location in C:\Program Files\Grass Valley Group\NetConfig.

Note If you have installed NetConfig in another location, find the location of the NetConfig directory by right-clicking on the NetConfig shortcut. Select **Properties** and note the location in the **Start In** field.

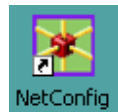
2. Move the .xml and .fld files listed below you downloaded onto your PC for the 8947RDA-D into the main NetConfig directory.

- 080851901.xml
- 080851901.fld

3. In the main NetConfig directory, locate a folder named **modular**. If this folder does not exist, create a folder called **modular** in the main NetConfig directory.

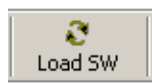
4. Move the .fld file from the main NetConfig directory into this **modular** directory.

5. Make sure the .xml file remains in the main NetConfig directory, not the **modular** folder.



6. Open NetConfig by double clicking on the NetConfig icon on your desktop.

Note If you have not used NetConfig before, refer to the *NetConfig Instruction Manual* included during installation in the main NetConfig directory in PDF format (NetConfig.pdf).



7. Click on the **Load SW** button on the top of the NetConfig toolbar.

8. This will bring up the NetConfig Load Software screen ([Figure 4 on page 12](#)).

9. If you done previous software downloads for Grass Valley products, you may have a **Modular**, a **Modular_Pkgs**, and possibly a **Misc** directory, and possibly router and other products listed on the left.

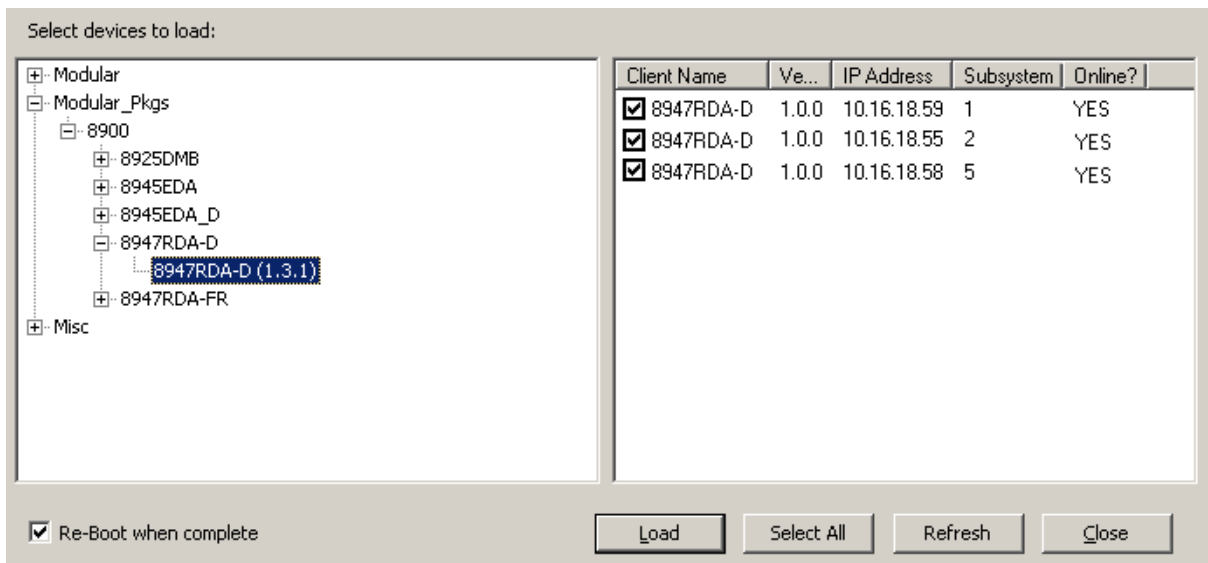
10. For this update, open the **Modular** directory by selecting the +.

11. Open the **Modular_Pkgs** directory by selecting the +, then open the 8947RDA-D directory.

Note Software versions displayed may vary depending on when the modules were last updated or purchased.

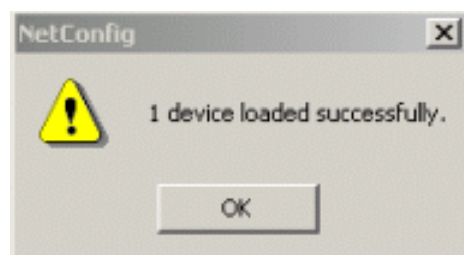
12. Click on the **8947RD-D (1.3.1)** selection to bring up all of the 8947RDA-D modules on the network.

Figure 4. NetConfig Load Software Screen



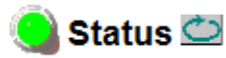
13. Check the 8947RDA-D module checkboxes you wish to update in the Client Name list. You may update all devices at once if desired by clicking on the **Select All** button at the bottom of the screen. Or you may only check the corresponding checkboxes only next to the specific modules you need to update.
14. Check the **Re-Boot when complete** checkbox in the lower left corner of the Load Software screen.
15. Select the **Load** button to update all selected modules with the software update. This will bring up a progress bar (not shown) showing software download status. Wait for the progress bar to finish.
16. When the upload has been successful, a pop-up screen similar to the one shown in [Figure 5](#) will appear.

Figure 5. Load Successful Popup



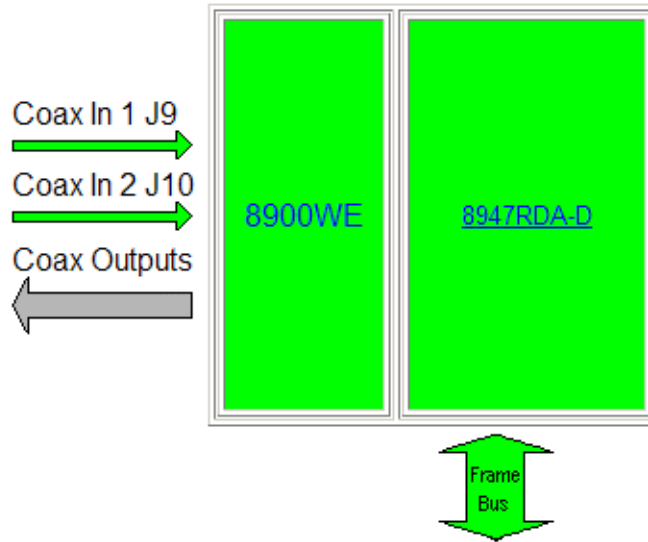
17. When the software update is complete, check that the software version for each module on the 8947RDA-D Status web page is updated for each module as shown in [Figure 6 on page 13](#).

Figure 6. 8947RDA-D Status Web Page



Model: [8947RDA-D](#) Description: [HD Dual Reclock. DA](#)
Frame Location: [lab](#), Slot: [4](#)

Gecko Flex Module Physical Structure



Applies to part numbers:
671-6696-20 and
771-0236-20

Software version updated

Part Number: 671-6696-20
Serial Number: RN05420107
Hardware Revision: A
Software Version: 1.3.1
Asset Tag:

