



# **8985FS/FSP**

SD/HD FRAME SYNC/PROC AMP

**Release Notes**  
Software Version 1.3.2

# Contacting Grass Valley

<b>International Support Centers</b>	<b>France 24 x 7</b>	+800 8080 2020 or +33 1 48 25 20 20	<b>United States/Canada 24 x 7</b>	+1 800 547 8949 or +1 530 478 4148
<b>Local Support Centers (available during normal business hours)</b>	<b>Asia</b>	<b>Hong Kong, Taiwan, Korea, Macau:</b> +852 2531 3058 <b>Indian Subcontinent:</b> +91 22 24933476 <b>Southeast Asia/Malaysia:</b> +603 7805 3884 <b>Southeast Asia/Singapore:</b> +65 6379 1313 <b>China:</b> +861 0660 159 450 <b>Japan:</b> +81 3 5484 6868		
		<b>Australia and New Zealand:</b> +61 1300 721 495	<b>Central/South America:</b> +55 11 5509 3443	
		<b>Middle East:</b> +971 4 299 64 40 <b>Near East and Africa:</b> +800 8080 2020 or +33 1 48 25 20 20		
	<b>Europe</b>	<b>Belarus, Russia, Tadzikistan, Ukraine, Uzbekistan:</b> +7 095 2580924 225 <b>Switzerland:</b> +41 1 487 80 02 <b>S. Europe/Italy-Roma:</b> +39 06 87 20 35 28 <b>-Milan:</b> +39 02 48 41 46 58 <b>S. Europe/Spain:</b> +34 91 512 03 50 <b>Benelux/Belgium:</b> +32 (0) 2 334 90 30 <b>Benelux/Netherlands:</b> +31 (0) 35 62 38 42 1 <b>N. Europe:</b> +45 45 96 88 70 <b>Germany, Austria, Eastern Europe:</b> +49 6150 104 444 <b>UK, Ireland, Israel:</b> +44 118 923 0499		

Copyright © Grass Valley, Inc. All rights reserved.  
This product may be covered by one or more U.S. and foreign patents.

## Grass Valley Web Site

The [www.grassvalley.com](http://www.grassvalley.com) web site offers the following:

**Online User Documentation** — Current versions of product catalogs, brochures, data sheets, ordering guides, planning guides, manuals, and release notes in .pdf format can be downloaded.

**FAQ Database** — Solutions to problems and troubleshooting efforts can be found by searching our Frequently Asked Questions (FAQ) database.

**Software Downloads** — Download software updates, drivers, and patches.



## END-OF-LIFE PRODUCT RECYCLING NOTICE

Grass Valley's innovation and excellence in product design also extends to the programs we've established to manage the recycling of our products. Grass Valley has developed a comprehensive end-of-life product take back program for recycle or disposal of end-of-life products. Our program meets the requirements of the European Union's WEEE Directive, the United States Environmental Protection Agency, and U.S. state and local agencies.

Grass Valley's end-of-life product take back program assures proper disposal by use of Best Available Technology. This program accepts any Grass Valley branded equipment. Upon request, a Certificate of Recycling or a Certificate of Destruction, depending on the ultimate disposition of the product, can be sent to the requester.

Grass Valley will be responsible for all costs associated with recycling and disposal, including freight. However, you are responsible for the removal of the equipment from your facility and packing the equipment to make it ready for pickup.



For further information on the Grass Valley product take back system please contact Grass Valley at + 800 80 80 20 20 or +33 1 48 25 20 20 from most other countries. In the U.S. and Canada please call 800-547-8949 or 530-478-4148, and ask to be connected to the EH&S Department. Additional information concerning the program can be found at: [www.thomsongrassvalley.com/environment](http://www.thomsongrassvalley.com/environment)



# Contents

- Introduction ..... 5
  - Software Requirements. .... 5
- 8985FS and 8985FSP Version 1.3.2 Software Overview ..... 6
- Acquiring Software..... 6
  - Acquiring NetConfig Software ..... 6
  - Acquiring 8900NET Software ..... 7
  - Acquiring 8985FS/FSP Software..... 7
    - 8985FS Version 1.3.2 ..... 7
    - 8985FSP Version 1.3.2 ..... 7
    - Software Update Files ..... 8
- Software Updating ..... 9
  - 8985FS/FSP Upgrade Procedure..... 9
    - 8985FS Software Update ..... 11
    - 8985FSP Software Update..... 16



Version **1.3.2**  
APRIL 2010

# ***8985FS/FSP HD/SD Frame Sync/Proc Amp Module Release Notes***

## **Introduction**

This document provides information on the latest release of the software for use with the 8985FS/FSP HD/SD Proc Amp modules. It describes the software update from version 1.3.0 to 1.3.2.

**Note** The 8985PRC HD/SD Proc Amp module software update and operation is covered in separate documentation.

Read this document completely before attempting to download the latest software.

This document details:

- Software Requirements,
- Version 1.3.2 Software Release ([page 6](#)),
- Acquiring Software ([page 6](#)), and
- Software Updating ([page 9](#)).

## **Software Requirements**

Updating software on any 8985FS or 8985FSP modules requires the presence of an 8900NET (Net Card) module running software version 4.3.0. Refer to [Acquiring 8900NET Software on page 7](#).

## 8985FS and 8985FSP Version 1.3.2 Software Overview

Version 1.3.2 features the following new enhancements for the 8985FS and 8985FSP modules:

- Updates software to work with new SFP fiber optic submodules:
  - SFP-13103G-M1DTX (Dual Transmitter)
  - SFP-13103G-M1DRX (Dual Receiver)
  - SFP-13103G-M1TRX (Transceiver)

**Note** The older version SFPs (1310NM-DRL, 1310NM-DTL, and 1310NM-TRL) can still be used with this software, but the newer version SFPs can only be used when version 1.3.2 is installed on the 8985FS or 8985FSP.

## Acquiring Software

NetConfig, a networking application from Grass Valley, must be used to update this software. Use the latest version of NetConfig (version 2.0.10 as of this printing) available free of charge from the Grass Valley ftp site.

**Note** This update requires recalling factory defaults after the download is complete. If you have configured your module, make a note of the settings before doing this software update.

## Acquiring NetConfig Software

If you do not have NetConfig or the latest version (version 2.0.10 as of this printing), you can download it from the Grass Valley ftp site:

<ftp://ftp.grassvalley.com/router/NetConfig/2.0.10>

1. Right-click on the latest NetConfig link to download the zipped file to the C:\temp folder or other convenient location on your PC.
2. Extract the zipped files onto your local drive:
3. Double-click on the NetConfig.EXE file to install NetConfig.

**Note** Installing NetConfig into the default location given in the install script (C:\Programs\Grass Valley Group) is recommended for future NetConfig and module software updates.

## Acquiring 8900NET Software

Updating this version of 8985FSP software requires the use of an 8900NET module running software version 4.3.0 or later. The latest version of 8900NET software (version 4.3.0) is available from the Thomson Grass Valley ftp site free of charge at this location:

<ftp://ftp.grassvalley.com//modular/8900/8900NET>

To download the latest 8900NET software, do the following:

4. Select the 8900 Series link.
5. Select the link to the latest 8900NET Interface module software.
6. If you are updating from an earlier version than 3.2.0, use the .bin file and the FTP Server procedure described in detail in the *8900NET Release Notes* available on-line.
7. Use the NetConfig Networking Application option to update from version 3.2.2 to version 4.3.0 with the .fld file.

## Acquiring 8985FS/FSP Software

The latest software release for the 8985FSP and/or the 8985FS module is available from the Grass Valley ftp server as described below.

**Note** The 8985PRC HD/SD Proc Amp module software update is covered in a separate release note under the 8985PRC module link.

### 8985FS Version 1.3.2

To download the latest software for the 8985FS module, do the following:

1. Select the following link to the ftp server.

<ftp://ftp.grassvalley.com/modular/8900/8985FS/1.3.2>

2. Right-click on all of the 8985FS .fld and .xml files provided to download them to the C:\temp folder or other convenient location on your PC.

### 8985FSP Version 1.3.2

To download the latest software for the 8985FSP module, do the following:

1. Select the following link to the ftp server.

<ftp://ftp.grassvalley.com/modular/8900/8985FSP/1.3.2>

2. Right-click on all of the 8985FSP .fld and .xml files provided to download them to the C:\temp folder or other convenient location on your PC.

## Software Update Files

The files for the 8985FS include the following:

- 8985FS\_1.3.2.xml
- 8985FSP\_SW\_1.3.2.fld
- 8985FSP\_BOOT\_2.0.1.fld
- 8985FSP\_1.3.2\_FW\_HD59.94\_SD.fld
- 8985FSP\_1.3.2\_FW\_HD50\_HD24.fld

The files for the 8985FSP include the following:

- 8985FSP\_1.3.2.xml
- 8985FSP\_SW\_1.3.2.fld
- 8985FSP\_BOOT\_2.0.1.fld
- 8985FSP\_1.3.2\_FW\_HD59.94\_SD.fld
- 8985FSP\_1.3.2\_FW\_HD50\_HD24.fld



# Software Updating

To update with NetConfig you must have the following:

- PC with NetConfig Networking application installed (version 2.0.10 is the latest as of this printing),
- IP connection between the frame containing the 8900 modules and your PC, and
- 8900NET module in the GeckoFlex frame with software 4.3.0 or later.

**Note** After updating software you will need to recall factory defaults. Save your current settings into a user settings file to reload after the software update.

## 8985FS/FSP Upgrade Procedure

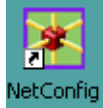
**Note** This update requires that factory defaults be recalled after the download is completed. This will return the module to the factory default settings. Be sure to note your current settings by writing them down or taking screen shots of each web page before doing this download.

1. Copy the 8985FS and/or 8985FSP software download files (listed in [Software Update Files on page 8](#)) into the main NetConfig directory on your PC. This is normally in the default location in C:\Program Files\Grass Valley Group\NetConfig.

If you have installed NetConfig in another location, find the location of the NetConfig directory by right-clicking on the NetConfig shortcut. Select **Properties** and note the location in the **Start In** field. Download the package to the NetConfig directory.

2. In the main NetConfig directory, locate a folder named **modular**. If this folder does not exist, create a folder called **modular** in the main NetConfig directory.
3. Move the .fld files you copied into the main NetConfig directory into this **modular** directory.
4. Verify that the .xml file(s) are in the main NetConfig directory (not in the **modular** directory).

**Note** NetConfig reads each .xml file in its main directory and navigates to the directory given in these files to find the .fld files available. There may be a number of .xml and .fld files in your NetConfig directory for other modular products. These will not interfere with the update.



5. Open NetConfig by double clicking on the NetConfig icon.

**Note** If you have not used NetConfig before, refer to the *NetConfig Instruction Manual* included during installation in the main NetConfig directory in PDF format (NetConfig.pdf).



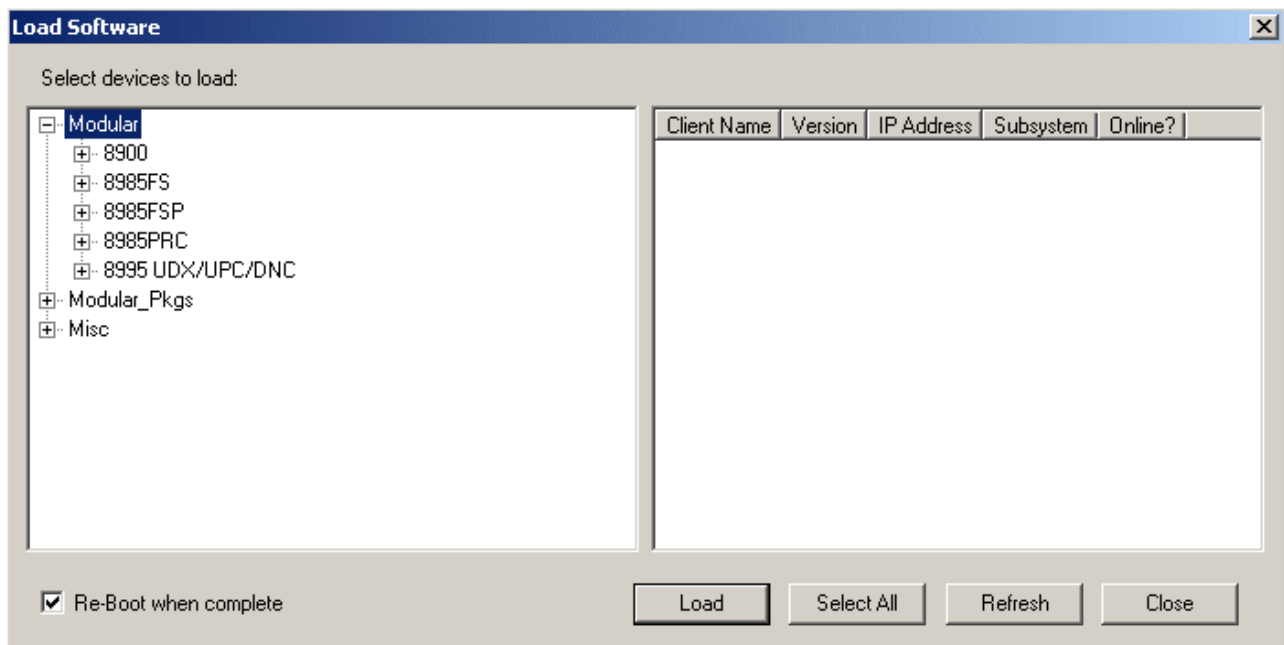
6. Click on the **Load SW** button on the top of the NetConfig toolbar.

7. This will bring up the Load Software screen ([Figure 1](#)). (This screen represents NetConfig version 2.0.10, the latest version as of this printing.)

8. Open the modular directory by selecting the +.

**Note** Other modular module type software updates may appear in the list. These will not affect this update.

Figure 1. Load Software Screen with Modular Directory

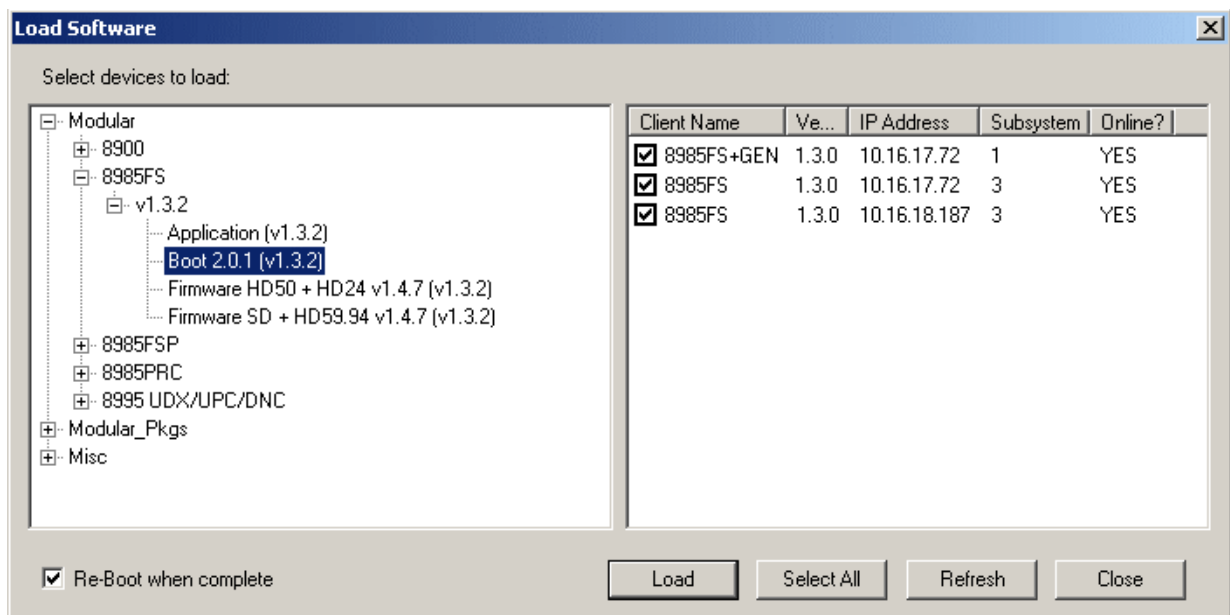


## 8985FS Software Update

1. Open the 8985FS directory by selecting the +, then open the 1.3.2 directory as shown in [Figure 2](#).
2. Highlight the **Boot 2.0.1 (v1.3.2)** selection in the 8985FS list. All 8985FS and 8985FS+GEN modules accessible on this subnet will be displayed in the window on the right with their current software version, frame IP Address, Subsystem, and Online status ([Figure 2](#)).
3. Find the 8985FS and 8985FS+GEN modules you want to update in the Client Name list. You may update all devices at once if desired by clicking on the **Select All** button. This will check all the modules. Or you may only check the corresponding checkbox next to the specific modules you wish to update.
4. Check the **Re-boot when complete** checkbox in the lower left corner of the screen for this step.
5. Press the **Load** button to download this boot code file to all selected modules.
6. The modules should re-boot with the new boot code. Check the Status web page for each module to make sure the new boot code has been loaded. Refer to the examples in [Figure 8 on page 15](#).

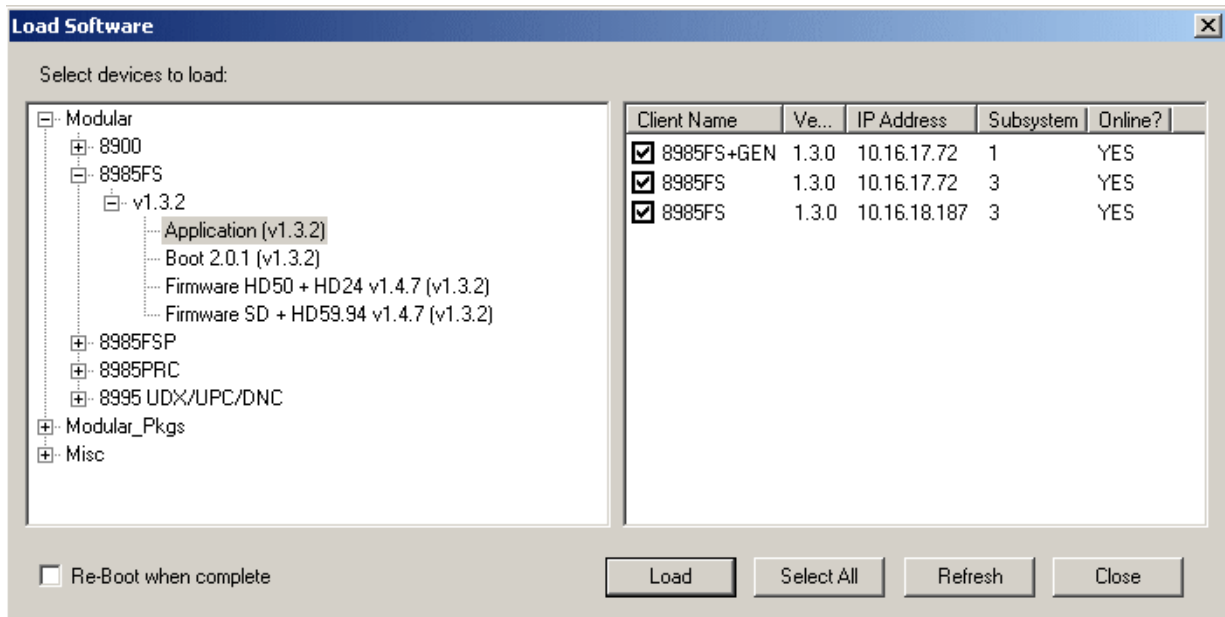
**Note** If a module does not reboot, pull it out of the frame slot and re-insert it.

Figure 2. 8985FS Boot Download



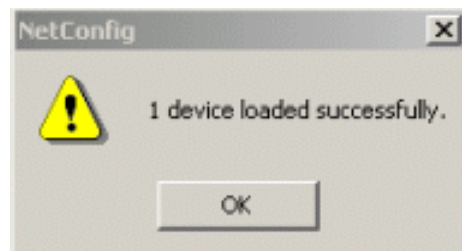
7. Select the file labeled **Application (v1.3.2)** under the 8985FS list as shown in [Figure 3](#) and check the same Client name checkboxes you updated for the boot code (or use the **Select All** button if you are updating all modules).

Figure 3. 8985FS Load Application



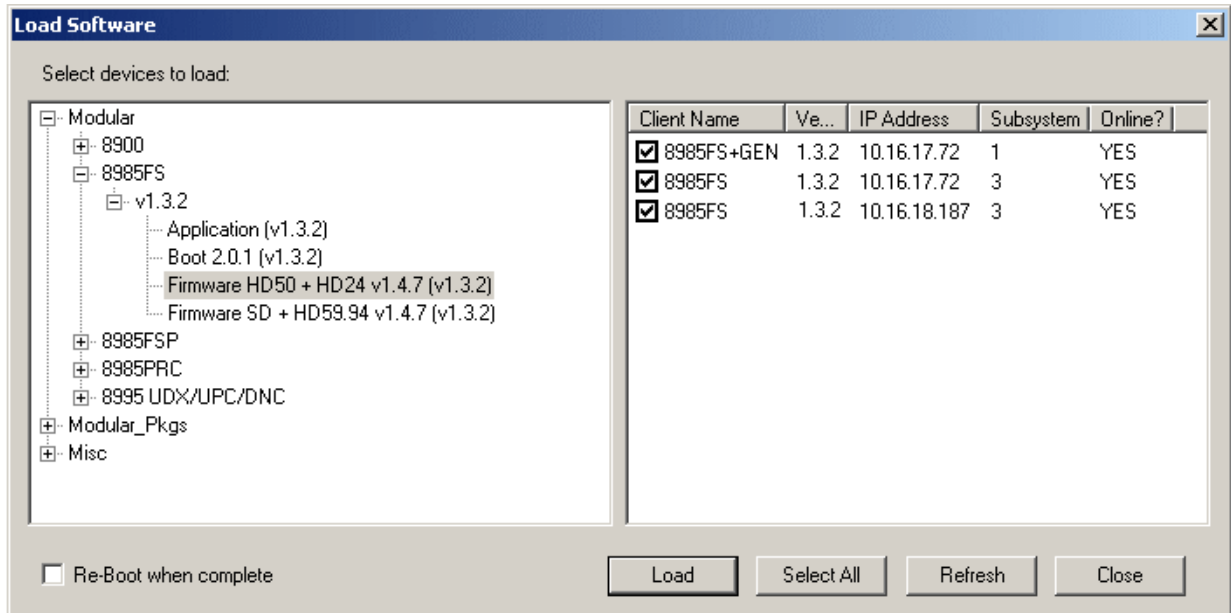
8. Uncheck the **Re-Boot when complete** checkbox in the lower left corner of the Load Software screen. This step and the Firmware downloads do not require a reboot.
9. Press the **Load** button to download this file to all selected modules.
10. If the load has been successful, a popup will appear as shown in [Figure 4](#). Click the **OK** button.

Figure 4. Load Successful Popup



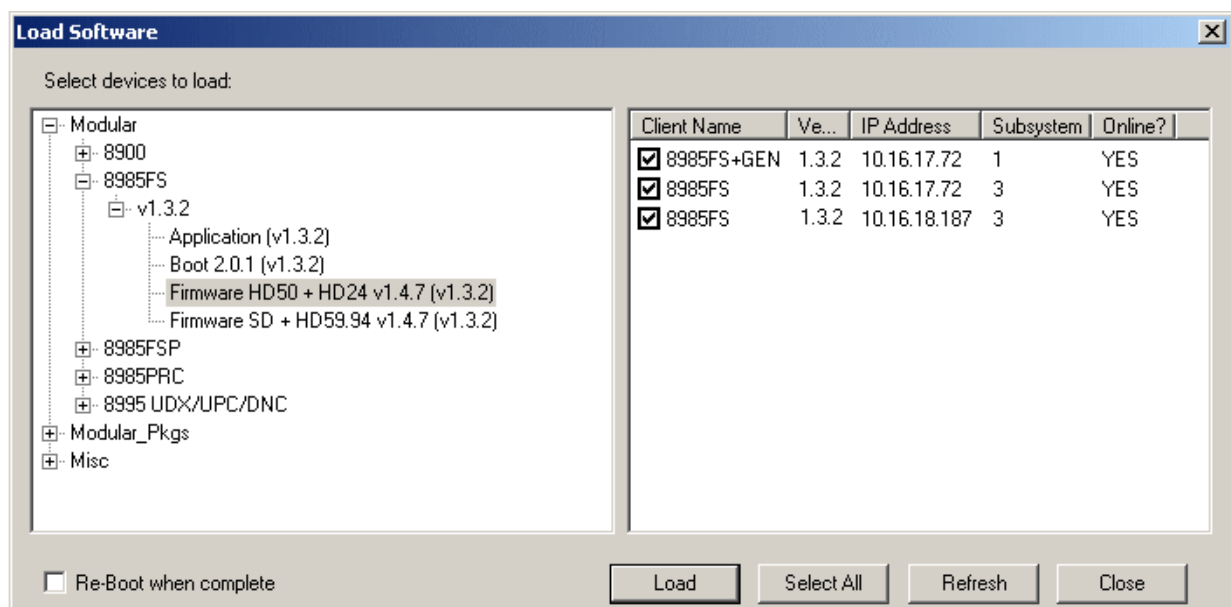
11. Return to the NetConfig software upload screen and select the **Firmware HD50 + HD24 v1.4.7 (v1.3.2)** file as shown in [Figure 5](#). Note that the Version should now read 1.3.2 from the previous application load.

Figure 5. 8985FS Firmware HD50 + HD24 v1.4.7 (1.3.2) Load



12. Repeat [Step 7](#) through [Step 10](#) for this file. Do not reboot.
13. Now select the **Firmware SD + HD59.94 v1.4.7 (v1.3.2)** file as shown in [Figure 6](#).
14. Repeat [Step 7](#) through [Step 10](#) for this file. Do not reboot.

Figure 6. Firmware SD + HD59.94 v1.4.7 (v1.3.2)



15. Check the software version is now at 1.3.2 and the Boot version is 2.0.1 on all module Status web pages (Figure 8 on page 15).

**Note** This next step will reset all parameters to factory defaults. Be sure to record you present parameters set on the module so you can re-enter them. You can try saving the current parameters to a file and reloading.

16. Go to the 8985FS User Setting web page (Figure 7) and recall factory settings by selecting the **Set Factory Defaults** and **Set Factory Names** buttons to reset all parameters on the module.

Figure 7. 8985FS Recall Defaults on User Settings Web Page

**User Settings**

Model: 8985FS Description: HD/SD Frame Sync  
Frame Location: CORE-Rk5 , Slot: 3  
Input Video Standard: 720p/59.94 Input Video: HD-Sat #2 : Present  
Output Timing Source: Ref Bus 1  
Fiber Module Type: Not Installed


**File Operations**

Save to... Load from...

Set Factory Defaults Recall factory settings  
Set Factory Names Recall factory names

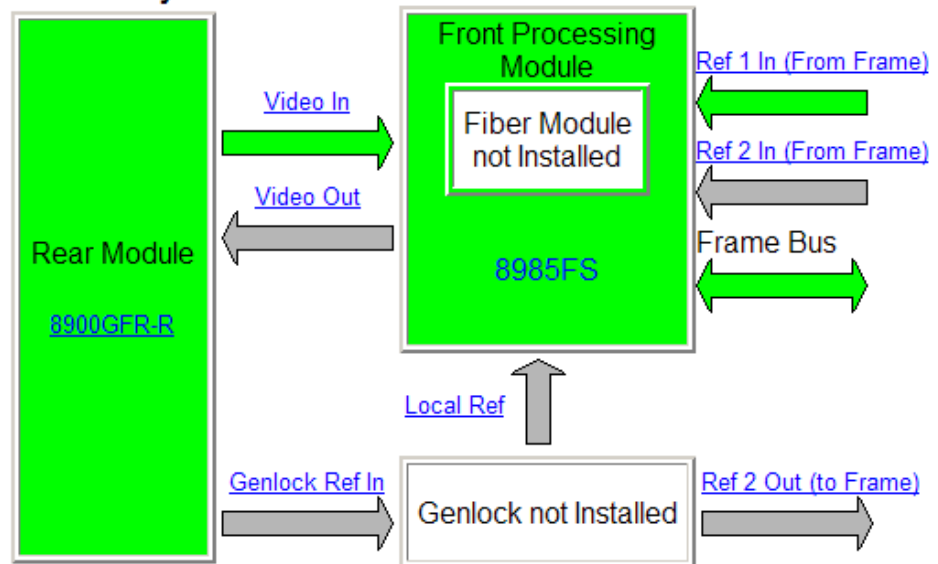
17. Verify proper operation of the module

Figure 8. 8985FS Status Web Page

**Status** 

Model: [8985FS](#) Description: [HD/SD Frame Sync](#)  
 Frame Location: [CORE-Rk5](#) , Slot: [3](#)  
 Input Video Standard: [720p/59.94](#) Input Video: [HD-Sat #2](#) : [Present](#)  
 Output Timing Source: [Ref Bus 1](#) Split Screen: [Disabled](#)

**Module Physical Structure**



[Genlock Module is not installed](#)

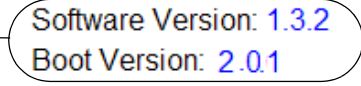
**Status:**

Front Module: [PASS](#)  
 Rear Module: [PASS](#)  
 Genlock Module: [PASS](#)  
 Fiber Module: [EMPTY](#)

**Front Module:**

Part Number: [671-6724-02D](#)  
 Serial Number: [KB08371129](#)  
 Hardware Revision: [02D](#)  
 Firmware Image 1 Version: [1.4.7](#)  
 Firmware Image 2 Version: [inactive](#)  
 Firmware Image 3 Version: [inactive](#)  
 Firmware Image 4 Version: [inactive](#)  
 Software Version: [1.3.2](#)  
 Boot Version: [2.01](#)  
 Asset Tag:

Check for updated software and boot version

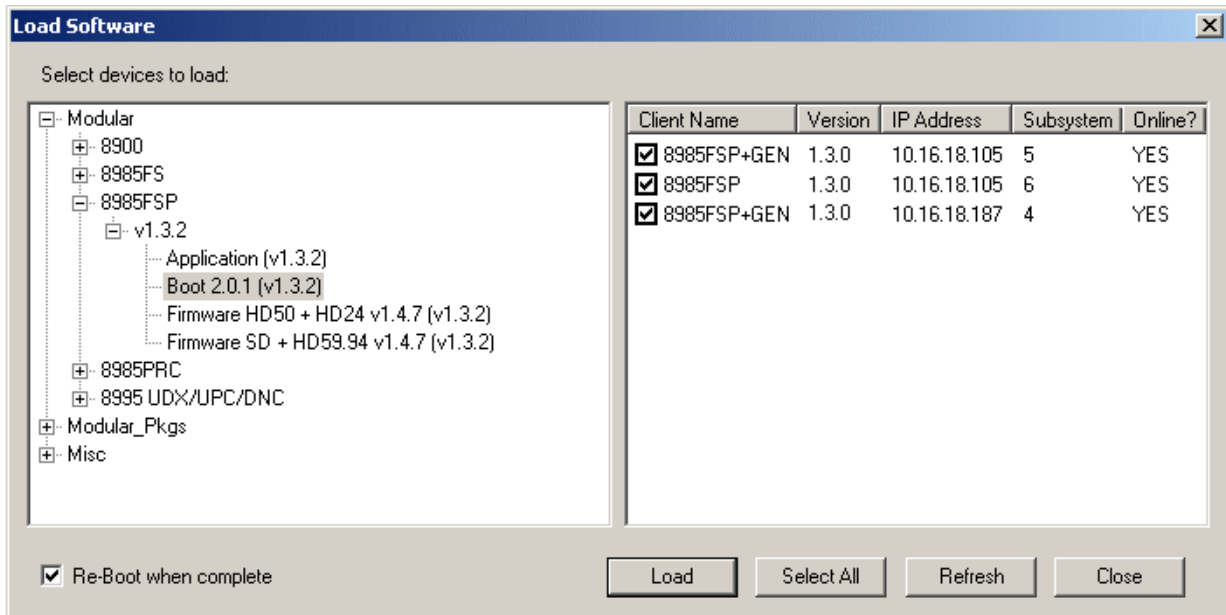


## 8985FSP Software Update

1. Open the 8985FSP directory by selecting the +, then open the 1.3.2 directory as shown in [Figure 9](#).
2. Highlight the **Boot 2.0.1 (v1.3.2)** selection in the 8985FSP list. All 8985FSP and 8985FSP+GEN modules accessible on this subnet will be displayed in the window on the right with their current software version, frame IP Address, Subsystem, and Online status ([Figure 9](#)).
3. Find the 8985FSP and 8985FSP+GEN modules you want to update in the Client Name list. You may update all devices at once if desired by clicking on the **Select All** button. This will check all the modules. Or you may only check the corresponding checkbox next to the specific modules you wish to update.
4. Check the **Re-boot when complete** checkbox in the lower left corner of the screen for this step.
5. Press the **Load** button to download this boot code file to all selected modules.
6. The modules should re-boot with the new boot code. Check the Status web page for each module to make sure the new boot code has been loaded. Refer to the examples in [Figure 15 on page 20](#).

**Note** If a module does not re-boot, pull it out of the frame and re-insert it.

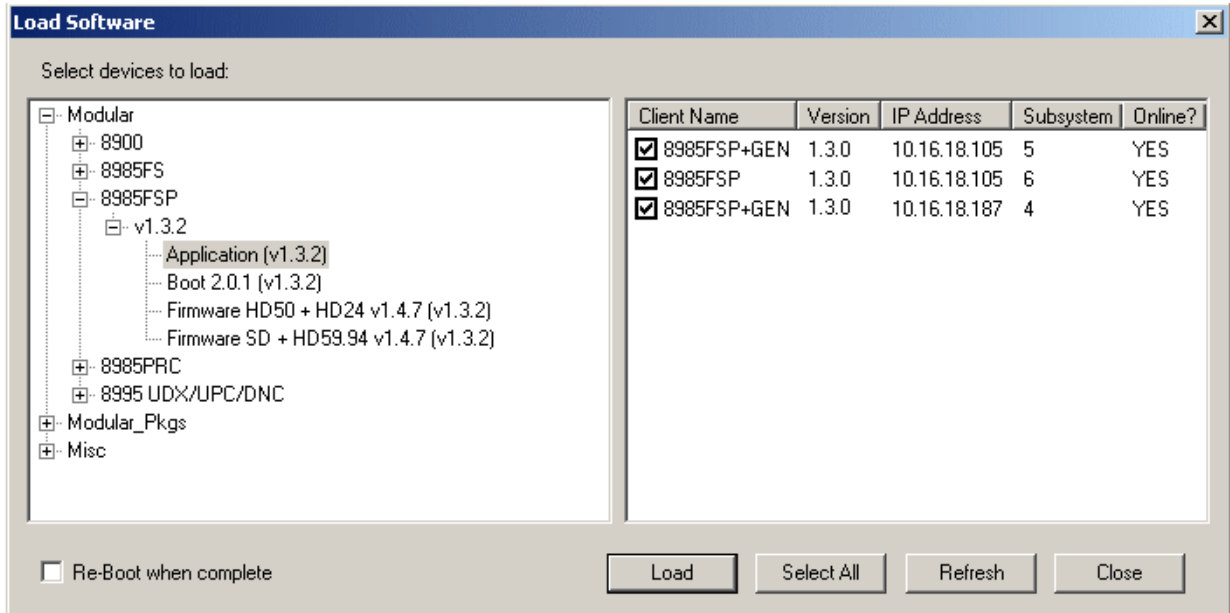
Figure 9. 8985FSP Boot Download





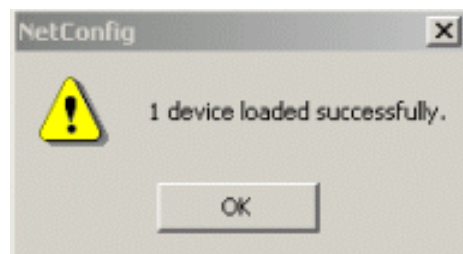
7. Select the file labeled **Application (v1.3.2)** under the 8985FSP list as shown in [Figure 10](#) and check the same Client name checkboxes you updated for the boot code (or use the **Select All** button if you are updating all modules).

Figure 10. Load Application



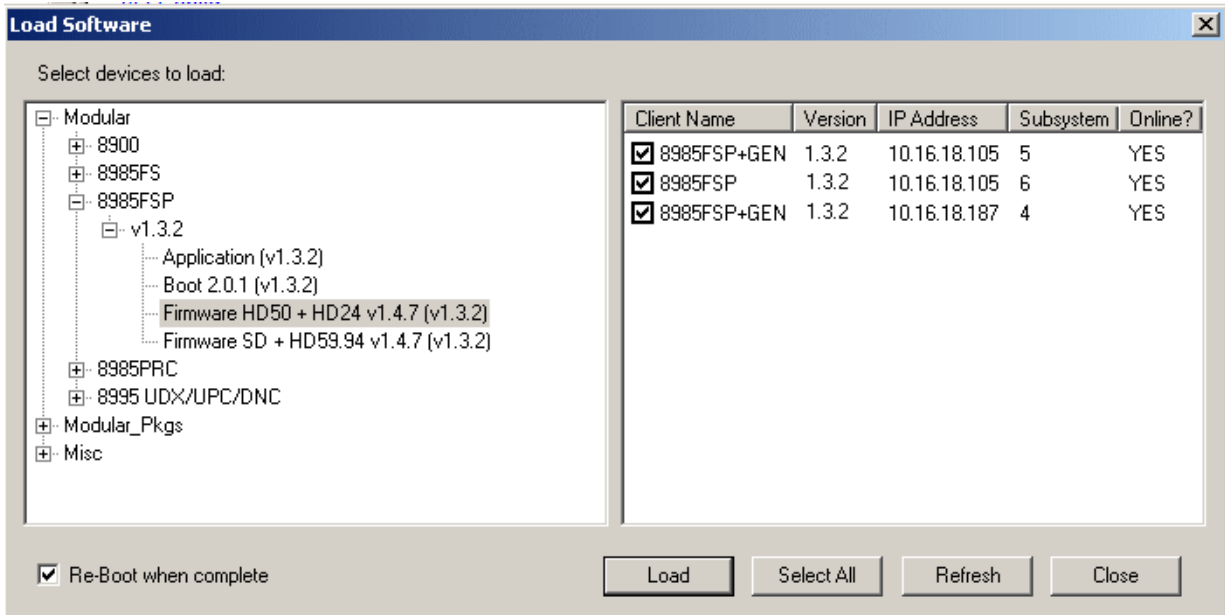
8. Uncheck the **Re-Boot when complete** checkbox in the lower left corner of the Load Software screen. This step and the Firmware downloads do not require a reboot.
9. Press the **Load** button to download this file to all selected modules.
10. If the load has been successful, a popup will appear as shown in [Figure 11](#). Click the **OK** button.

Figure 11. Load Successful Popup



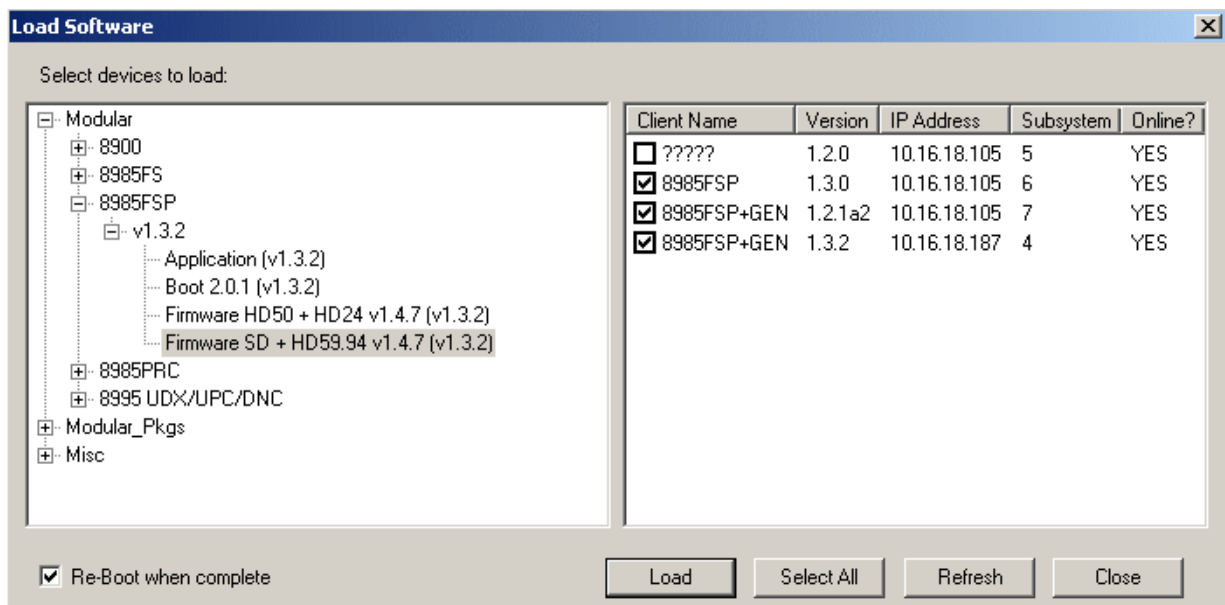
11. Return to the NetConfig software upload screen and select the **Firmware HD50 + HD24 v1.4.7 (v1.3.2)** file as shown in [Figure 12](#). Note that the Version should now read 1.3.2 from the previous application load.

Figure 12. 8985FSP Firmware HD50 + HD24 v1.4.7 (1.3.2) Load



12. Repeat [Step 7](#) through [Step 10](#) for this file. Do not reboot.
13. Now select the **Firmware SD + HD59.94 v1.4.7 (v1.3.2)** file as shown in [Figure 13](#).
14. Repeat [Step 7](#) through [Step 10](#) for this file. Do not reboot.

Figure 13. 8985FSP Firmware SD + HD59.94 v1.4.7 (v1.3.2)

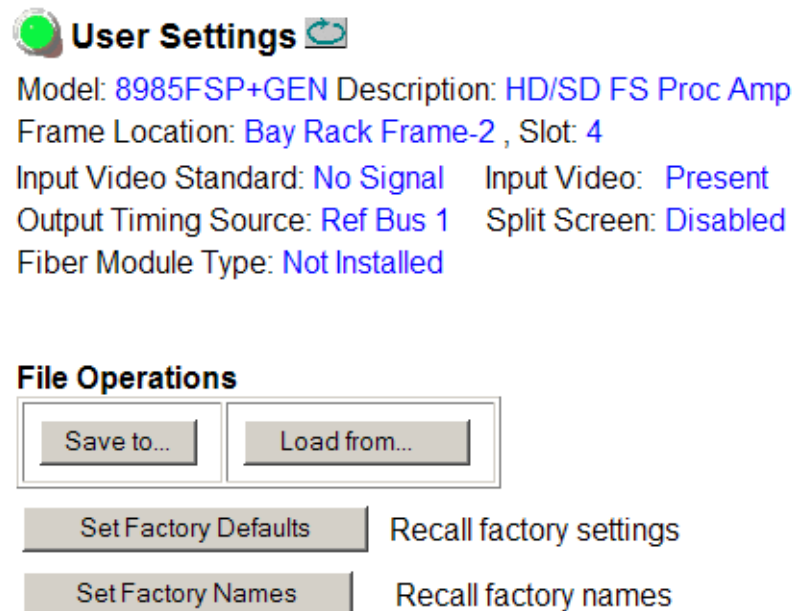


15. Check the software version is now at 1.3.2 and the Boot version is 2.0.1 on the 8985FS Status web page (Figure 15 on page 20).

**Note** This next step will reset all parameters to factory defaults. Be sure to record you present parameters set on the module so you can re-enter them. You can try saving the current parameters to a file and reloading.

16. Go to the User Setting web page (Figure 14) and recall factory settings by selecting the **Set Factory Defaults** and **Set Factory Names** buttons to reset all parameters on the module.

Figure 14. 8985FSP Recall Defaults on User Settings Web Page



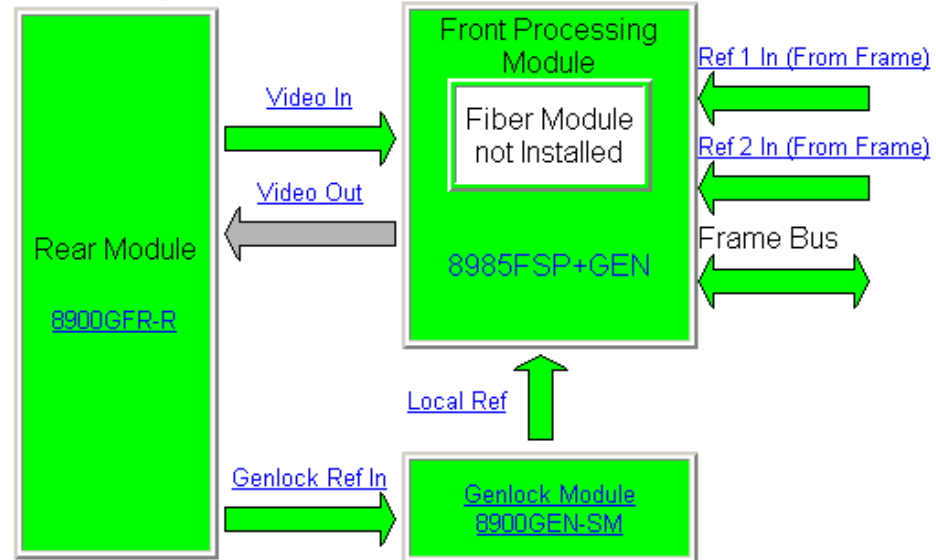
17. Verify proper operation of the module

Figure 15. 8985FSP Status Web Page

**Status**

Model: [8985FSP+GEN](#) Description: [HD/SD FS Proc Amp](#)  
 Frame Location: [not assigned](#) , Slot: [9](#)  
 Input Video Standard: [1080i/59.94](#) Input Video: [Coax Input : Present](#)  
 Output Timing Source: [Input Video](#) Split Screen: [Disabled](#)  
 Fiber Module Type: [Not Installed](#)

**Module Physical Structure**



**Status:**

Front Module: [PASS](#)  
 Rear Module: [PASS](#)  
 Genlock Module: [PASS](#)  
 Fiber Module: [EMPTY](#)

**Front Module:**

Part Number: [671-6724-02D](#)  
 Serial Number: [KB08371129](#)  
 Hardware Revision: [02D](#)  
 Firmware Image 1 Version: [1.4.7](#)  
 Firmware Image 2 Version: [inactive](#)  
 Firmware Image 3 Version: [inactive](#)  
 Firmware Image 4 Version: [inactive](#)  
 Software Version: [1.3.2](#)  
 Boot Version: [2.0.1](#)  
 Asset Tag:

Check for updated software and boot version

