



# **8995UPC/DNC/UDX**

**SD/HD UP/DOWN/CROSS CONVERTER**

## **Release Notes**

Software Version 1.2.4

# Contacting Grass Valley

<b>International Support Centers</b>	<b>France 24 x 7</b>	+800 8080 2020 or +33 1 48 25 20 20	<b>United States/Canada 24 x 7</b>	+1 800 547 8949 or +1 530 478 4148
<b>Local Support Centers (available during normal business hours)</b>	<b>Asia</b>	<b>Hong Kong, Taiwan, Korea, Macau:</b> +852 2531 3058 <b>Indian Subcontinent:</b> +91 22 24933476 <b>Southeast Asia/Malaysia:</b> +603 7805 3884 <b>Southeast Asia/Singapore:</b> +65 6379 1313 <b>China:</b> +861 0660 159 450 <b>Japan:</b> +81 3 5484 6868		
		<b>Australia and New Zealand:</b> +61 1300 721 495	<b>Central/South America:</b> +55 11 5509 3443	
		<b>Middle East:</b> +971 4 299 64 40 <b>Near East and Africa:</b> +800 8080 2020 or +33 1 48 25 20 20		
	<b>Europe</b>	<b>Belarus, Russia, Tadzikistan, Ukraine, Uzbekistan:</b> +7 095 2580924 225 <b>Switzerland:</b> +41 1 487 80 02 <b>S. Europe/Italy-Roma:</b> +39 06 87 20 35 28 <b>-Milan:</b> +39 02 48 41 46 58 <b>S. Europe/Spain:</b> +34 91 512 03 50 <b>Benelux/Belgium:</b> +32 (0) 2 334 90 30 <b>Benelux/Netherlands:</b> +31 (0) 35 62 38 42 1 <b>N. Europe:</b> +45 45 96 88 70 <b>Germany, Austria, Eastern Europe:</b> +49 6150 104 444 <b>UK, Ireland, Israel:</b> +44 118 923 0499		

Copyright © Grass Valley, Inc. All rights reserved.  
This product may be covered by one or more U.S. and foreign patents.

## Grass Valley Web Site

The [www.grassvalley.com](http://www.grassvalley.com) web site offers the following:

**Online User Documentation** — Current versions of product catalogs, brochures, data sheets, ordering guides, planning guides, manuals, and release notes in .pdf format can be downloaded.

**FAQ Database** — Solutions to problems and troubleshooting efforts can be found by searching our Frequently Asked Questions (FAQ) database.

**Software Downloads** — Download software updates, drivers, and patches.



## END-OF-LIFE PRODUCT RECYCLING NOTICE

Grass Valley's innovation and excellence in product design also extends to the programs we've established to manage the recycling of our products. Grass Valley has developed a comprehensive end-of-life product take back program for recycle or disposal of end-of-life products. Our program meets the requirements of the European Union's WEEE Directive, the United States Environmental Protection Agency, and U.S. state and local agencies.

Grass Valley's end-of-life product take back program assures proper disposal by use of Best Available Technology. This program accepts any Grass Valley branded equipment. Upon request, a Certificate of Recycling or a Certificate of Destruction, depending on the ultimate disposition of the product, can be sent to the requester.

Grass Valley will be responsible for all costs associated with recycling and disposal, including freight. However, you are responsible for the removal of the equipment from your facility and packing the equipment to make it ready for pickup.



For further information on the Grass Valley product take back system please contact Grass Valley at + 800 80 80 20 20 or +33 1 48 25 20 20 from most other countries. In the U.S. and Canada please call 800-547-8949 or 530-478-4148, and ask to be connected to the EH&S Department. Additional information concerning the program can be found at: [www.thomsongrassvalley.com/environment](http://www.thomsongrassvalley.com/environment)



# Contents

- 8995UPC/DNC/UDX  
Release Notes** ..... 5
  - Introduction ..... 5
    - 8995UPC/DNC/UDX Version 1.2.4 Software Overview ..... 5
    - Current Software Issues ..... 6
  - Software Updating ..... 7
    - Recall Factory Defaults ..... 7
    - Using NetConfig to Update Software ..... 7
      - NetConfig Software Update with XML Method ..... 8
      - Verifying Software Update ..... 14
    - Updating 8995 Software with a MicroSD Card ..... 16
      - Required Components ..... 16
      - MicroSD Card Update Procedure ..... 17



# **8995UPC/DNC/UDX**

## **Release Notes**

### **Introduction**

These release notes provide important information and software updating instructions for the latest release of 8995UPC/DNC/UDX module software, version 1.2.4. This update takes the 8995UPC/DNC/UDX modules from version 1.2.1 to 1.2.4.

**Note** If you are updating from version 1.0.3 or earlier, please refer to the Release Notes for the previous version 1.1.0 release for a summary of the operational changes between 1.0.2/1.0.3 and the newer versions. However, use the software upgrade instructions in these release notes for best results.

These release notes contain the following sections:

- Software Overview
- Current Software Issues ([page 6](#))
- Software Updating Procedures ([page 7](#)).

### **8995UPC/DNC/UDX Version 1.2.4 Software Overview**

Version 1.2.4 features the following new enhancements for the 8995DNC, 8995UPC, and 8995UDX modules:

- Updates software to work with new SFP submodules:
  - SFP-13103G-M1DTX (Dual Transmitter)
  - SFP-13103G-M1DRX (Dual Receiver)
  - SFP-13103G-M1TRX (Transceiver)

**Note** The older version SFPs (1310NM-DRL, 1310NM-DTL, and 1310NM-TRL) can still be used with this software, but the newer version SFPs can only be used when version 1.2.4 is installed on the 8995.

## Current Software Issues

Note the following current software issues in this release:

- The Newton Control panel will often go offline when changing items on the setup of the module during periods of heavy network traffic. This can also occur during normal operation while changing simple parameters not involved with setup (CR 71177).
- Edge expansion has no effect in all pass-through modes and also for 1080p 23.98 to and from 720p 59.94 format (CR 71216).
- After changing formats where the module must reload the entire module configuration (such as SD to HD), the web pages may not update completely and display question marks until the **Refresh** button is pressed (CR 74604).

# Software Updating

There are two methods to update software: the Grass Valley PC application NetConfig (available from the Thomson Grass Valley web site free of charge) or using a microSD memory card (requires purchase of microSD card and adapter and USB card reader). Software loading times are somewhat shorter using the microSD method and multiple module type software update files can be loaded onto the microSD memory card for easy updating.

## Recall Factory Defaults

It is advised for best results after an update to recall factory default parameter settings and names to the module using the **Set Factory Defaults** and **Set Factory Names** buttons on the User Settings web page. This will reset the module to add any new functionality.

However, this will also overwrite the current configuration of the module parameters. If you have configurations you would like to save, write them down or take screen shots of the parameters for each web page you want to reload before loading the new software. You can also try saving your configuration to a file with the User Settings web page and you may be able to reload your settings this way.

## Using NetConfig to Update Software

The NetConfig networking application is a highly versatile tool for both software updating and accessing modular products on the network to view status and set module parameters. If you do not have NetConfig or the latest version as of this printing (version 2.0.10), you can download it free of charge from the Thomson Grass Valley ftp site at this URL:

<ftp://ftp.grassvalley.com/router/NetConfig/Version 2.0.10/>

1. Right-click on the latest NetConfig link to download the zipped file to the C Drive folder or other convenient location on your PC.
2. Extract the zipped files onto your local drive:
3. Double-click on the NetConfig.exe file to install NetConfig.

**Note** Installing NetConfig into the default location given in the install script (C:\Programs\Grass Valley Group) is recommended for future NetConfig and module software updates.

To update with NetConfig you must have the following:

- PC with NetConfig Networking application installed (version 2.0.10 is the latest version available),
- IP connection between the GeckoFlex frame and your PC, and
- 8900NET (Net Card) module in the GeckoFlex frame with software 4.3.0 or later is highly recommended and required for software update. The version 4.3.0 software is available free of charge from the Thomson Grass Valley ftp site at this URL:

<ftp://ftp.grassvalley.com/modular/8900/8900net/V4.3.0>

## NetConfig Software Update with XML Method

The latest method of downloading software uses a .xml file instead of the previous method using a .sw2 file. The latest method is very similar to the older one but allows for easier updating of all module types (different hardware versions) at once.

These software files will update all 8995UPC, 8995DNC, and 8995UDX modules on the network at the same time. Modules with a +GEN have an 8900GEN-SM submodule installed.

1. The latest 8995 module software update files are available on the Thomson Grass Valley ftp site at this URL:

<ftp://ftp.grassvalley.com/modular/8900/8995/>

2. On your local C:\ drive, locate the NetConfig program directory. This directory is normally in the default location in C:\Program Files\Grass Valley Group\NetConfig.

If you have installed NetConfig in another location, find the location of the NetConfig directory by right-clicking on the NetConfig shortcut. Select **Properties** and note the location in the **Start In** field.

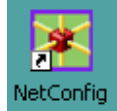
1. Copy the .xml and .fld files listed below into the main NetConfig directory from the ftp site (all 8995 modules software updates are included in this package).

- 8995UDX-v1.2.4\_Pkg.xml
- 8995UDX\_BOOT\_2.0.1.fld
- 8995UDX\_SW\_1.2.4.fld
- 8995UDX\_1.2.4\_FW\_HD50\_HD24.fld
- 8995UDX\_1.2.4\_FW\_HD59.94\_SD.fld

2. In the main NetConfig directory, locate a folder named **modular**. If this folder does not exist, create a folder called **modular** in the main NetConfig directory.



3. Move the four .fld files from the main NetConfig directory into this **modular** directory.
4. Make sure the 8995UDX-v1.2.4\_Pkg.xml .xml file is in the main NetConfig directory, not the **modular** folder.
5. Open NetConfig by double clicking on the NetConfig icon on your desktop.

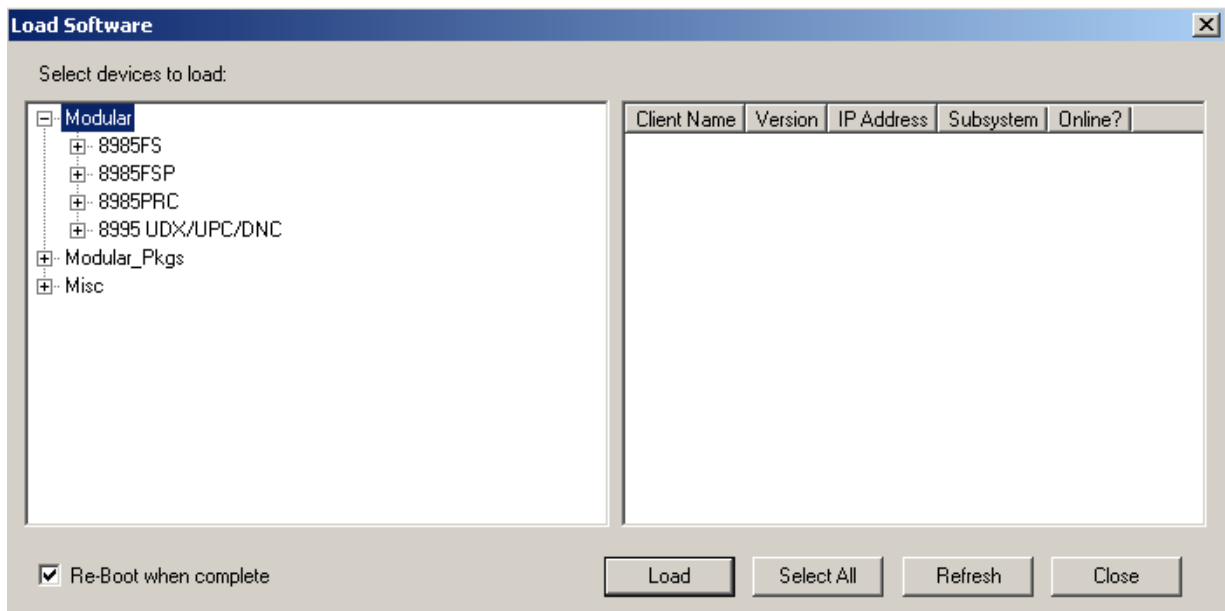


**Note** If you have not used NetConfig before, refer to the *NetConfig Instruction Manual* included during installation in the main NetConfig directory in PDF format (NetConfig.pdf).



6. Click on the **Load SW** button on the top of the NetConfig toolbar.
7. This will bring up the NetConfig Load Software screen ([Figure 1](#)).
8. If you done previous software downloads using .sw2 files, you will have a **Modular**, a **Modular\_Pkgs**, and possibly a **Misc** directory, and possibly router and other products listed on the left. For this example, only Modular products are shown.
9. For this update, open the **Modular** directory by selecting the +.

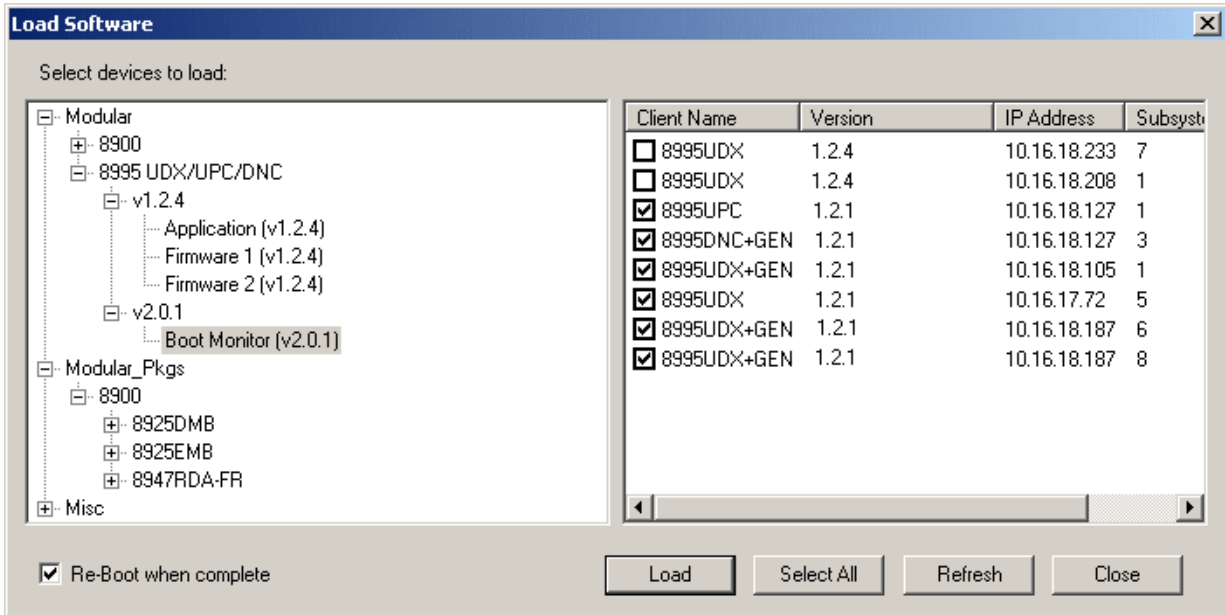
Figure 1. NetConfig Software Update



10. Open the 8995UDX/UPC/DNC directory, then the v1.2.4 directory (Figure 15).
11. Select the **Boot Monitor (v2.0.1)** selection to highlight it as shown in Figure 15. This will bring up all of the 8995UDX, 8995UPC, and 8995DNC modules on your network on the right side of the screen.

**Note** Software versions displayed may vary depending on when the modules were last updated or purchased.

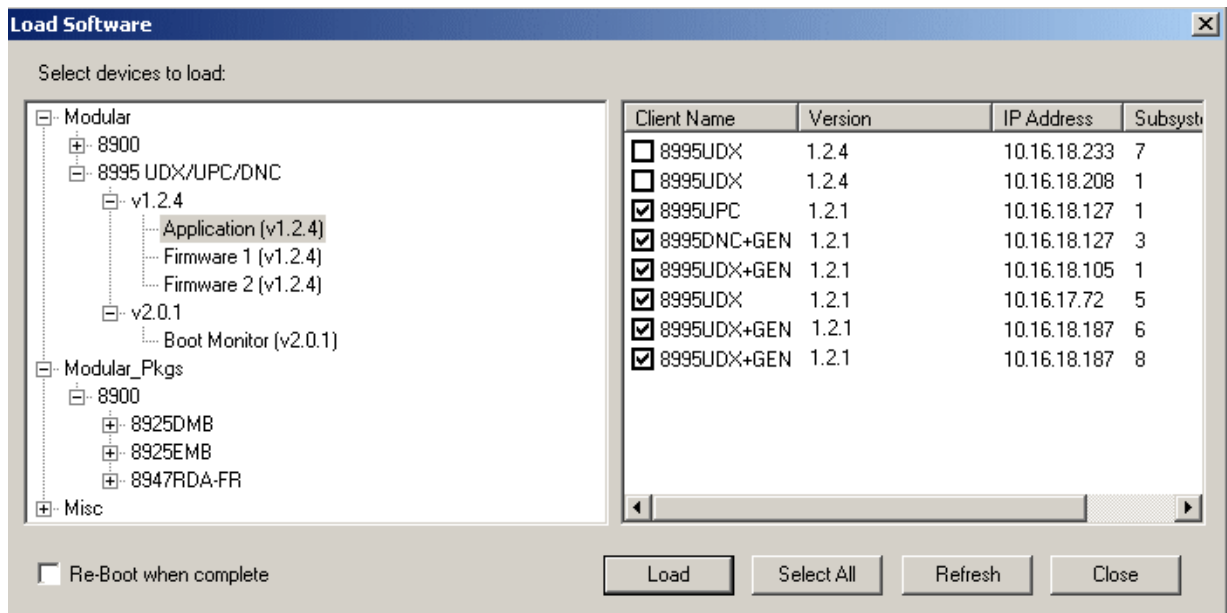
Figure 2. Boot Load



12. Check the 8995 module checkboxes you wish to update in the Client Name list. You may update all devices at once if desired by clicking on the **Select All** button at the bottom of the screen. Or you may only check the corresponding checkboxes only next to the specific modules you need to update.
13. Check the **Re-Boot when complete** checkbox in the lower left corner of the Load Software screen.
14. Select the **Load** button to update all selected modules with the new Boot code. This will bring up a progress bar (not shown) showing software download status. Wait for the progress bar to finish.
15. Once the boot has loaded, the modules should re-boot. Check this by looking at the Status web page (Figure 8 on page 15) and noting the Boot Version is now 2..0.1. If not, pull each 8995 module from its slot in the frame and re-seat it to re-boot.

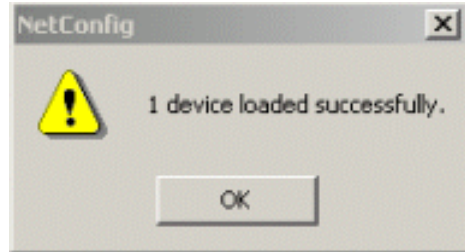
16. Now return to the NetConfig Load Software screen and highlight the **Application (v1.2.4)** selection as shown in [Figure 3](#).
17. This will bring up the same group of 8995UDX, 8995UPC, and 8995DNC modules on your network on the right side of the screen.
18. Check the 8995 module checkboxes you are updating in the Client Name list. You may update all devices at once if desired by clicking on the **Select All** button at the bottom of the screen. Or you may only check the corresponding checkboxes only next to the specific modules you need to update.
19. Make sure the **Re-Boot when complete** checkbox in the lower left corner of the Load Software screen is not checked.
20. Select the **Load** button to update all selected modules with the new application code. This will bring up a progress bar (not shown) showing software download status. Wait for the progress bar to finish.
21. Do not re-boot after this step.

Figure 3. Load Application



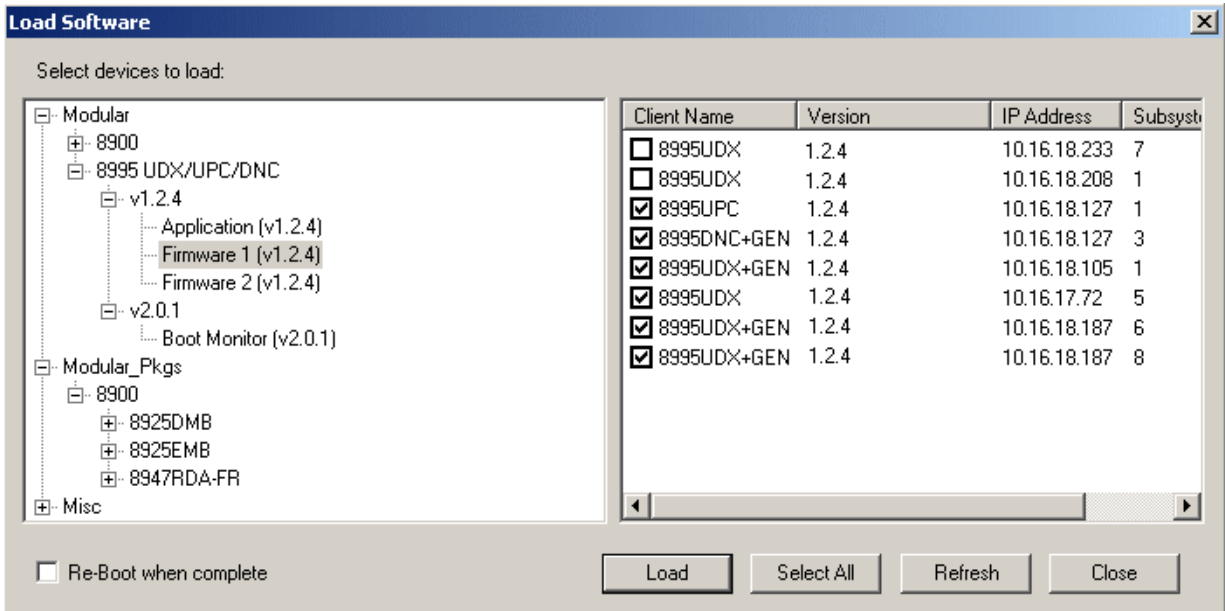
22. If the upload has been successful, a pop-up screen similar to the one shown in Figure 4 will appear and each module should now report its version as 1.2.4 as shown in Figure 5.

Figure 4. Load Successful Popup



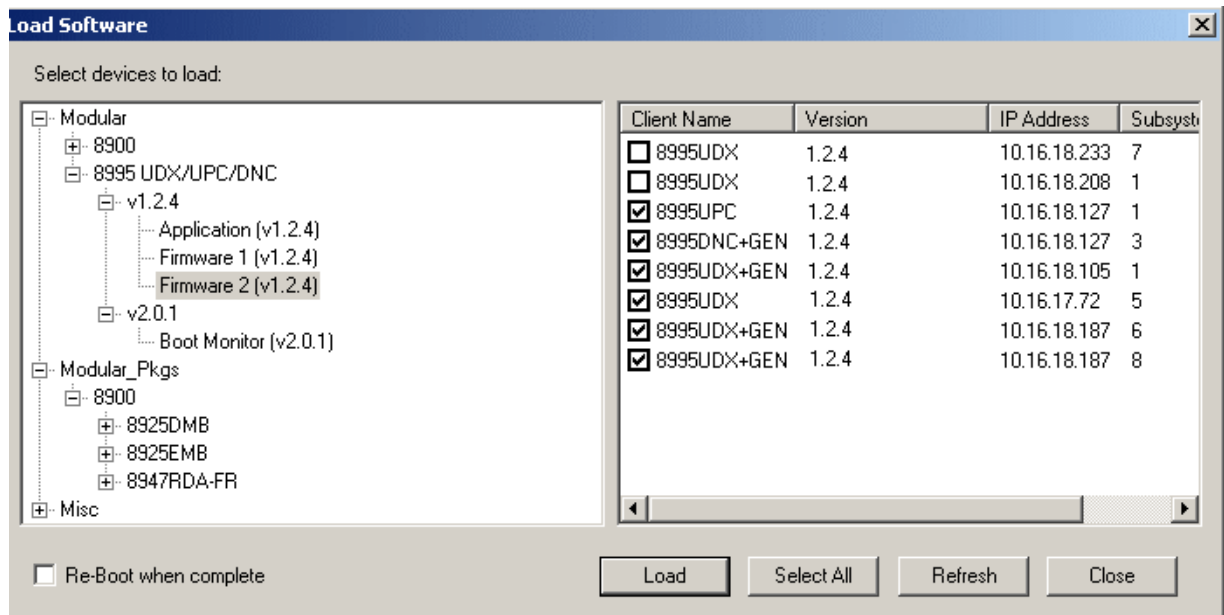
23. Now highlight the **Firmware 1 (v1.2.4)** selection as shown in Figure 5.
24. This will bring up the same group of 8995UDX, 8995UPC, and 8995DNC modules on your network on the right side of the screen.
25. Make sure the **Re-boot when complete** button is not checked.
26. Repeat the procedure by selecting the **Load** button.
27. Do not re-boot after this step.

Figure 5. Load Firmware 1



28. Once this has been loaded successfully, select Firmware 2 and load it to all modules in the same manner (Figure 6).
29. Do not re-boot after this step.

Figure 6. Load Firmware 2



## Verifying Software Update

- [Audio Gain](#)
- [Audio Channel Pairing](#)
- [Audio Proc](#)

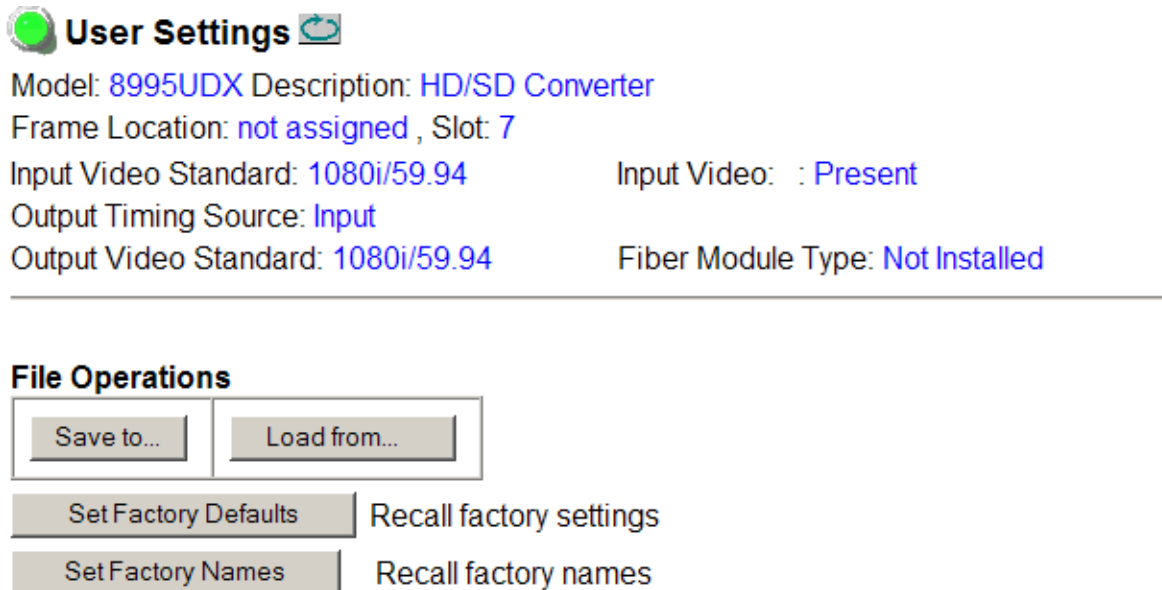
Use [Genlock](#)  
this—[User Settings](#)  
link [Slot Config](#)


1. When the software updates have been done, check that the software version for each module on the 8995 Status web page is updated for each module as shown in [Figure 8 on page 15](#).

**Note** The following step will reset all parameters to factory default parameters and names. Before doing this step, record your settings for each module by writing them down or save in a User Settings file so you can reload your settings. Refer to [Recall Factory Defaults on page 7](#).

2. It is highly recommended to reset module parameters by linking to the User Settings web page ([Figure 8 on page 15](#)) for each module that has been updated and select the **Set Factory Defaults** and **Set Factory Names** button. This will return the module to the factory default values and update the module with the new parameters for this release.

Figure 7. Recall Factory Settings and Names



**User Settings** 

Model: [8995UDX](#) Description: [HD/SD Converter](#)  
Frame Location: [not assigned](#) , Slot: [7](#)  
Input Video Standard: [1080i/59.94](#)                      Input Video: : [Present](#)  
Output Timing Source: [Input](#)  
Output Video Standard: [1080i/59.94](#)                      Fiber Module Type: [Not Installed](#)

---

**File Operations**

[Save to...](#)    [Load from...](#)

[Set Factory Defaults](#)    Recall factory settings  
[Set Factory Names](#)      Recall factory names

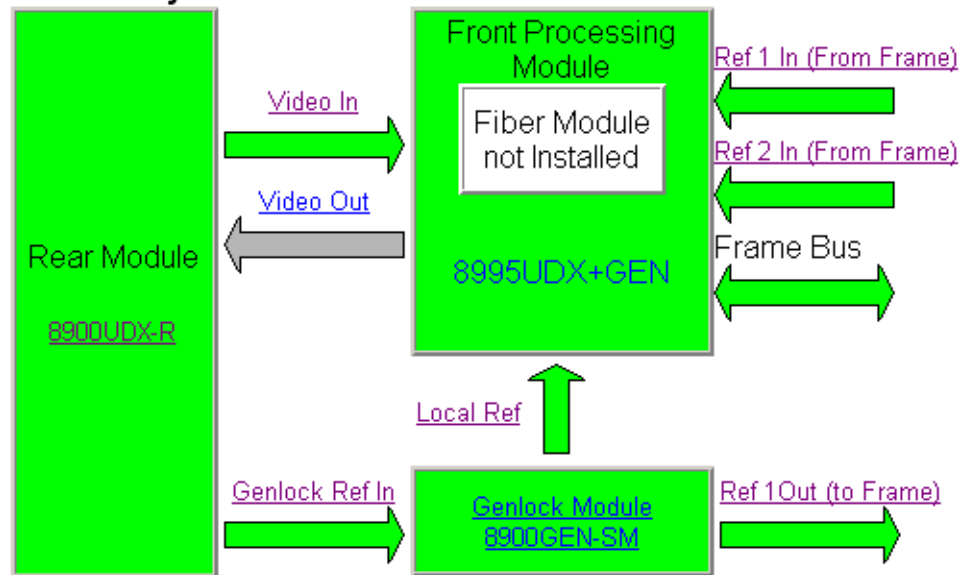
3. Verify proper operation of the module.

Figure 8. 8995 Status Web Page



Model: [8995UDX+GEN](#) Description: [HD/SD Converter](#)  
 Frame Location: [RF Cube](#) , Slot: [1](#)  
 Input Video Standard: [480i/59.94](#) Input Video: : [Present](#)  
 Output Timing Source: [Ref 1](#)  
 Output Video Standard: [1080i/59.94](#) Fiber Module Type: [Not Installed](#)

**Module Physical Structure**



Fiber Module is not installed

**Status:**  
 Front Module: [PASS](#)  
 Rear Module: [PASS](#)  
 Genlock Module: [PASS](#)  
 Fiber Module: [EMPTY](#)

**Front Module:**

Part Number: [771-0503-00](#)  
 Serial Number: [KB07220250](#)  
 Hardware Revision: [00](#)  
 Firmware Image 1 Version: [2.2.6](#)  
 Firmware Image 2 Version: [inactive](#)  
 Firmware Image 3 Version: [inactive](#)  
 Firmware Image 4 Version: [inactive](#)  
 Software Version: [1.2.4](#)  
 Boot Version: [2.0.1](#)  
 Asset Tag:

Boot Version

## Updating 8995 Software with a MicroSD Card

The 8995 modules have been equipped with a microSD socket (J17) located on the front of the module to accept a microSD flash memory card for updating software of the 8995UDX, 8995UPC, and 8995DNC modules (Figure 9). Using this method requires the purchase of microSD hardware by the customer.

The microSD is a standard flash memory card format commonly used in cell phone and digital cameras for storage. The benefit of this socket is to save time in loading software to modules and ease of software upload. This method does require direct access to each module in the frame.

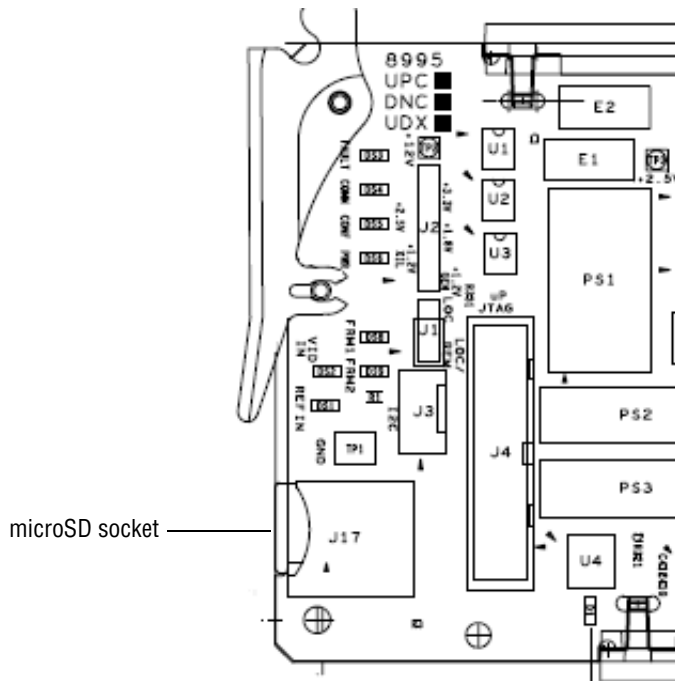
### Required Components

The required components for doing this method are the following:

- USB SD/MMC card reader for connecting to a PC to load the .upd software file onto the microSD card in the adapter. Any type of card reader can be used.
- Any of the most popular microSD flash memory cards with less than 2Gb of memory and an adapter for inserting the card into the card reader.

**Note** Using a flash memory card with more than 2Gb of memory has been shown to cause unexpected results and is not recommended.

Figure 9. MicroSD Socket





## MicroSD Card Update Procedure

Follow the steps below to update your software:

**Note** Use standard anti-static precautions when handling these devices.

1. Locate the module software for the 8995UDX/UPC/DNC update on the Thomson Grass Valley ftp server at this link:

<ftp://ftp.grassvalley.com/modular/8900/8995/v1.2.4>

1. In the 8995 module folder, find the .upd files for this update as listed below:
  - DNC122\_DC572.upd
  - DNC122\_DC5032.upd
  - DNC122\_DC5032.upd
  - UDX122\_DC5033.upd
  - UPC122\_DC571.upd
  - UPC122\_DC5031.upd
2. Copy all of the .upd files for the 8995 modules you will be updating into a folder on your PC desktop.
3. Slide the memory card into the memory card adapter.
4. Insert the adapter into the card reader with the adapter label facing up and snap the cover back into place.
5. Remove the cover from the USB connector end of the card reader and attach the USB card reader to a USB port on your PC.
6. Browse to this card reader drive device on your PC and copy the .upd files provided to the card reader drive.

**Note** You may have a number of different .upd files on the flash card but you may not have two of the exact same device class.

7. Remove the card reader from the PC USB port.
8. Remove the adapter from the card reader.
9. Carefully remove the memory card from the adapter, pull the 8995 module out of the frame and place the memory card into the socket on the front of the module so the label side is to the outside as shown in [Figure 10 on page 18](#).
10. Insert the module back into the frame to reboot and start the update process.

**Note** If the module does not recognize the memory card or does not reboot, check for duplicate files in the directory or use the NetConfig method described in [Using NetConfig to Update Software on page 7](#).

During the module reboot, when a memory card is inserted in the socket, the application will not be loaded to the module. The module will search the card for the correct file types and device class information and load these into the onboard flash memory. This process is automatic and requires no action on your part.

While the boot code is loading the update, the CONFIG LED (shown in [Figure 10](#)) on the module will indicate the progress. If the CONFIG LED is lit, the boot code is currently writing the update to flash.

If the FAULT LED begins flashing, a failure to update has occurred. A failure to update can occur when the memory card cannot be read (larger than 2Gb), no .upd files are found for the module's device class, or multiple files with the same file name are present.

When the CONFIG LED goes off, the update is complete. Remove the module, remove the memory card, and re-install the module.

It is highly recommended to recall factory defaults to the module as described in [Verifying Software Update on page 14](#). Also refer to [Recall Factory Defaults on page 7](#) before performing the recall.

Figure 10. Insert Memory Card into Module Socket

