

KAM-HD-FS

HD/SD FRAME SYNC MODULE

Release Notes



SOFTWARE VERSION 1.1.0

071836100
OCTOBER 2004

the most watched worldwide

Contacting Grass Valley

Region	Voice	Fax	Address	Web Site
North America	(800) 547-8949 Support: 530-478-4148	Sales: (530) 478-3347 Support: (530) 478-3181	Grass Valley P.O. Box 599000 Nevada City, CA 95959-7900 USA	www.thomsongrassvalley.com
Pacific Operations	+852-2585-6688 Support: 852-2585-6579	+852-2802-2996		
U.K., Asia, Middle East	+44 1753 218 777	+44 1753 218 757		
France	+33 1 45 29 73 00			
Germany, Europe	+49 6150 104 782	+49 6150 104 223		

Copyright © Thomson Broadcast and Media Solutions All rights reserved.

Grass Valley Web Site

The www.thomsongrassvalley.com web site offers the following:

Online User Documentation — Current versions of product catalogs, brochures, data sheets, ordering guides, planning guides, manuals, and release notes in .pdf format can be downloaded.

FAQ Database — Solutions to problems and troubleshooting efforts can be found by searching our Frequently Asked Questions (FAQ) database.

Software Downloads — Software updates, drivers, and patches can be downloaded.

KAM-HD-FS HD/SD Frame Sync Module Release Notes

Introduction

This document provides information on the latest release of the software for use with the KAM-HD-FS HD/SD Frame Sync module.

Read this document completely before attempting to download the latest software.

This document details:

- System requirements ([page 3](#)),
- Version 1.1.0 Software Release Features ([page 4](#)),
- Known Software Issues ([page 4](#)),
- Information on acquiring and updating software ([page 5](#)), and
- Accessing Reference Documents ([page 7](#)).

System Requirements

Operation of the KAM-HD-FS modules in Kameleon 2000 Series frames has the following hardware and software requirements:

- Modules must be installed in a 2000T1DNG or 2000T3DNG Kameleon 2000 Series frame containing a 2000GEN module.
- The frame must have a 2000NET module with assembly number 671-5231-01 or later running software version 3.2.2 or later.

Version 1.1.0 Software Release

The new features available in this release are outlined below.

Please also refer to the Known Software Issues section for important notes on this release of KAM-HD-FS modules.

New Features

The v1.1.0 release offers the following new features for the KAM-HD-FS module:

- SD rates are now selectable between 480i/59.94 and 576i/50
- HD rates are now selectable between 1080i/59.94, 1080i/50, and 720p/59.94
- Frame Sync Loss of Signal Operation choices now include Auto Blue and Pass
- Known software issues from v1.0.0 have been resolved
- Software update can be done with NetConfig Networking Application option

Known Software Issues

Any existing software or operating issues or defects still present in this release are reported in [Table 1](#).

Table 1. Known Software and Operating Issues

Area	Issues	ID
H Timing	In Video In timed mode (HD or SD), the horizontal delay is not consistent when the module is power cycled. The timing can vary up to 100 ns from the original setting.	47453
Video Proc Amp	The Video Proc Amp on this module does not pass Super Black at this time.	47989
SD Inputs	When switching between two SD sources (hot switch), glitches or artifacts can occur in the video output.	48830

Updating Software

Software for the KAM-HD-FS module can be updated with the Software update page in the web browser GUI or with the Netconfig Networking Application option (preferred method).

Updating with the web browser method requires the use of an ftp server application available from the Grass Valley web site. Refer to the *2000NET Network Interface Instruction Manual* available on-line for complete instructions for installing and using the ftp server application.

The preferred method for updating software is done using the NetConfig PC application option available from Grass Valley. Refer to *Software Updating With NetConfig* on page 6 or the *NetConfig Networking Application Instruction Manual* available with the application or on-line.

Note Before updating new software to the module, uncheck the **Restore Upon Install** button on the Slot Config page. Leave this button unchecked until the module has been reconfigured with the new software.

Acquiring the Latest Software

The latest software for the module is available from the Thomson Grass Valley FAQ web site at the following URL:

<http://gvg.custhelp.com>

This will take you to the Grass Valley Customer Service FAQ data base. The information provided here is the most up-to-date. You may also subscribe to software updates through the FAQ site. This is recommended so that when new versions of software are released, you are notified by email.

To download the latest KAM-HD-FS software for either the ftp or Net-Config methods, do the following:

1. Navigate to the FAQ site and click on the first FAQ, DOWNLOAD THE LATEST SOFTWARE?
2. Select the 2000 Series link.
3. Select the link to the latest KAM-HD-FS Interface module software.
4. Follow any instructions given in the ReadMe documents and download the files to your PC.

Software Updating With NetConfig

To use this method, your 2000NET module must be running version 3.2.2 or later and you must have the NetConfig Networking Application option running on a networked PC on the same subnet as the frame with the 2000NET module. Two files are required for updating software, an .fld and an .sw2 for the module being updated.

To use NetConfig for software updating, follow the steps below:

1. Locate the PC directory in which the NetConfig application has been installed. The default location is C:\Program Files\Grass Valley Group\NetConfig.

If this is not where NetConfig was installed, right-click on the NetConfig desktop shortcut and select **Properties**, click on the **Shortcut** tab and note the location of the installation in the **Start In** field.

2. Copy the .sw2 file for the module update into the main NetConfig directory.
3. Create a subdirectory named **modular** (if one does not already exist) in the main NetConfig directory.
4. Copy the .fld file for the update into this modular subdirectory.
5. Open NetConfig and click on the **Load SW** icon on the top toolbar (shown at left).
6. The NetConfig Update Devices window will open showing the software files available (Figure 1 on page 7).



These device types and versions represent the .sw2 and .fld files loaded in the NetConfig main directory and the modular subdirectory. These files must be present on the PC running NetConfig for them to appear in the Device Type list.

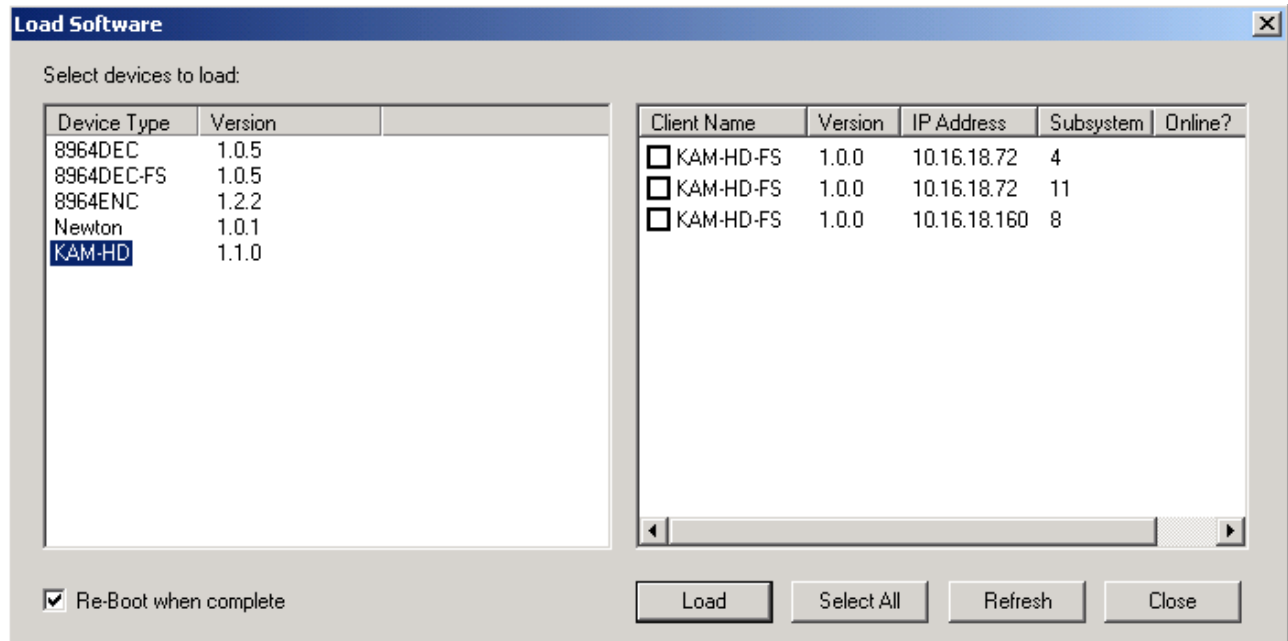
7. Select the Device Type you wish to update. In the example in Figure 1, the KAM-HD module Device Type has been selected and will be highlighted. All of the modules of this type accessible on the network will appear in the window on the right under the **Client Name** heading as shown.

The current software loaded on each module will be listed as well as the IP address and other information for the module client.

8. Check the corresponding **Client Name** boxes to upgrade the modules or use the **Select All** button to update all modules of this type present on the network.
9. Press the **Load** button to perform the update to all the selected modules.

- Once the loading is complete, select the **Refresh** button to make sure all selected modules have updated to the correct software version which will be reported in the window.

Figure 1. NetConfig Update Devices Window



For more information on using NetConfig, refer to the *NetConfig Networking Application Instruction Manual* which is included with the option, available on the Thomson Grass Valley web site, and may also be present in the NetConfig directory during some NetConfig installations (Newton Control Panel installation is one example).

Accessing Reference Documents

For on-line access to other reference documents referred to in these Release Notes, navigate to the following URL:

<http://www.thomsongrassvalley.com/docs>

Select the **Modular Products** link and scroll through the available documents. All of the documents referred to may also be ordered in hard copy from any Grass Valley Sales or Customer Service source. Refer to [Contacting Grass Valley](#) at the front of this document.

