



# Aurora Ingest Version 6.5.1.132 Release Notes and Installation Instructions

These release notes contain the most recent information and supersede previous publications, as of April 29, 2009. Check the Grass Valley website at [www.thomsongrassvalley.com/docs](http://www.thomsongrassvalley.com/docs) for an updated version that contains additional important information.

## Table of Contents

<i>Grass Valley Product Support</i> .....	2
<i>About Aurora Ingest 6.5.1.132</i> .....	4
<i>Fixes included in version 6.5.1.132</i> .....	4
<i>Performance Improvements in version 6.5</i> .....	4
<i>What's new in version 6.5</i> .....	4
<i>Software Version compatibility</i> .....	6
<i>Backing up Aurora Ingest Database</i> .....	6
<i>Upgrading Aurora Ingest</i> .....	8
<i>System Specifications</i> .....	9
<i>Installing Aurora Ingest</i> .....	11
<i>Licensing Aurora Ingest</i> .....	13
<i>Migrating Aurora Ingest Database</i> .....	13
<i>Restoring Aurora Ingest Database</i> .....	14
<i>Installing System Imaging Software</i> .....	16
<i>Setting up AMP control on K2 or Summit Media Client</i> .....	17
<i>Individual Component Usage Notes</i> .....	17
<i>Known issues</i> .....	19

Copyright ©2008 Grass Valley, Inc. All rights reserved. Printed in the United States of America. Portions of software ©2000–2007, Microsoft Corporation. All rights reserved. This document may not be copied in whole or in part, or otherwise reproduced except as specifically permitted under U.S. copyright law, without the prior written consent of Grass Valley, Inc., P.O. Box 59900, Nevada City, California 95959-7900. This product may be covered by one or more U.S. and foreign patents.

Product options and specifications subject to change without notice. The information in this manual is furnished for informational use only, is subject to change without notice, and should not be construed as a commitment by Grass Valley, Inc. Grass Valley, Inc. assumes no responsibility or liability for any errors or inaccuracies that may appear in this publication.

Grass Valley, K2, Aurora, Turbo, M-Series, Profile, Profile XP, NewsBrowse, NewsEdit, NewsQ, NewsShare, NewsQ Pro, and Media Manager are either registered trademarks or trademarks of Grass Valley, Inc. in the United States and/or other countries. Grass Valley, Inc. products are covered by U.S. and foreign patents, issued and pending. Additional information regarding Grass Valley, Inc.'s trademarks and other proprietary rights may be found at [www.thomsongrassvalley.com](http://www.thomsongrassvalley.com). Other trademarks and logos used in this document are either registered trademarks or trademarks of the manufacturers or vendors of the associated products, such as Microsoft® Windows® operating system, Windows Media® player, Internet Explorer® internet browser, and SQL Server™. QuickTime and the QuickTime logo are trademarks or registered trademarks of Apple Computer, Inc., used under license therefrom.

# Grass Valley Product Support

To get technical assistance, check on the status of a question, or to report new issue, contact Grass Valley Product Support via e-mail, the Web, or by phone or fax.

## Web Technical Support

To access support information on the Web, visit the product support Web page on the Grass Valley Web site. You can download software or find solutions to problems.

**World Wide Web:** <http://www.thomsongrassvalley.com/support/>

**Technical Support E-mail Address:** [gvgtechsupport@thomson.net](mailto:gvgtechsupport@thomson.net).

## Telephone Support

Use the following information to contact Product Support by phone.

## International Support Centers

Our international support centers are available 24 hours a day, 7 days a week.

Support Center	Toll free	In country
France	+800 80 80 20 20	+33 1 48 25 20 20
United States	+1 800 547 8949	+1 530 478 4148

## Authorized Local Support Representative

A local support representative may be available in your country. To locate a support center during normal local business hours, refer to the following list. This list is regularly updated on the website for Thomson Grass Valley Product Support (<http://www.thomsongrassvalley.com/support/contact/phone/>).

After-hours local phone support is also available for warranty and contract customers.

Region	Country	Telephone
<b>Asia</b>	China	+861 066 0159 450
	Hong Kong, Taiwan, Korea, Macau	+852 2531 3058
	Japan	+81 3 5484 6868
	Southeast Asia - Malaysia	+603 7492 3303
	Southeast Asia - Singapore	+65 6379 1313
	Indian Subcontinent	+91 11 515 282 502 +91 11 515 282 504
<b>Pacific</b>	Australia, New Zealand	+61 1300 721 495
<b>Central America, South America</b>	All	+55 11 5509 3440
<b>North America</b>	North America, Mexico, Caribbean	+1 800 547 8949 +1 530 478 4148

Region	Country	Telephone
<b>Europe</b>	UK, Ireland, Israel	+44 118 923 0499
	Benelux – Netherlands	+31 (0) 35 62 38 421
	Benelux – Belgium	+32 (0) 2 334 90 30
	France	+800 80 80 20 20 +33 1 48 25 20 20
	Germany, Austria, Eastern Europe	+49 6150 104 444
	Belarus, Russia, Tadzhikistan, Ukraine, Uzbekistan	+7 095 258 09 20 +33 (0) 2 334 90 30
	Nordics (Norway, Sweden, Finland, Denmark, Iceland)	+45 40 47 22 37
	Southern Europe – Italy	+39 02 24 13 16 01 +39 06 87 20 35 42
	Southern Europe – Spain	+34 91 512 03 50
<b>Middle East, Near East, Africa</b>	Middle East	+971 4 299 64 40
	Near East and Africa	+800 80 80 20 20 +33 1 48 25 20 20

## About Aurora Ingest 6.5.1.132

The Aurora Ingest 6.5.1.132 release contains bug fixes. In addition, this release supports the Summit system, which includes special features such as HD/SD operation, smooth slow-motion playback and instant replay of fast-action sports, live events and live-to-tape applications.

As a minor release, this constitutes the revision of release notes only and not the whole customer documentation set. Therefore, information in these release notes supersedes information in any of the other Aurora Ingest documentation.

The latest Grass Valley documentation can be found online at:

<http://www.thomsongrassvalley.com/docs/>

## Fixes included in version 6.5.1.132

- (85968) - Options can be grayed out when logged into a domain, even with local admin privileges.
- (90978) - Stop button doesn't work to cancel a Timecode Break Scan.
- (101934) - RMI import of trimmed XDCAM HD clip results in corrupted clip in News database.
- (102312) - Scheduler can skip past an event and leave it in "Ready" status.
- (102591) - VTR Ingest sometimes prerolled forward, causing failed recording.
- (102710) - "Failed while reading from database" error could occur when modifying large recurring series.
- (103368) - Failure to connect to preview channels could cause memory usage to increase on Ingest Server.
- (103442) - RMI did not allow setting an import destination that was not a top-level bin.

## Performance Improvements in version 6.5

- RMI speed improvement on XDCAM HD imports.
- Faster scheduling techniques with more crash record control.
- Better logging capabilities from RMI, Scheduler, and VTR Ingest.

## What's new in version 6.5

Aurora Ingest 6.5 is a major release for Aurora Ingest. Although each application has new features and functionality, the overarching change is the inclusion of MediaFrame.

Note that a complete, in-depth guide to what's new is included in a document called *What's New – Aurora Ingest 6.5*.

## Aurora Ingest – Server

- Added a MediaFrame server entry dialog to Tools/Options.  
**Note** – For MediaFrame connectivity to function between the Scheduler, RMI, and the VTR Ingest applications that are on a different domain than the MediaFrame server, there must be a defined one-way trust relationship between Aurora Ingest and the MediaFrame Server.
- Added a Time of Day timecode setting for Feeds
- Added an expiration date setting for ties into MediaFrame.

## Aurora Ingest - Scheduler

- Added MediaFrame integration for searching, previewing, and marking highlights directly from the scheduling application.
- Added the ability to name crash records prior to hitting record.
- Added the ability to direct a crash record to a folder location prior to hitting record.
- Added a Quick Scheduling mode to the Schedule grid for efficient additions of feeds.
- Enhanced the trim and extend capabilities of feeds via the keyboard.
- Added support for X-Keys controller with Scheduler and MediaFrame for enhancing the ability to log live and previously captured events.
- The Help->About box now includes a System Information Utility.
- Link a currently recording event to a placeholder
- Default colors have been changed within the Scheduler.

## Aurora Ingest - RMI

- Made modifying locations for imports easier.
- Added the ability to preview and trim prior to import.
- Currently importing feeds are editable by Aurora Edit before they are complete.
- Eliminated the need to transcode on import, which speeds up imports.
- Added the ability to merge multiple clips into a single clip on import.
- Added DV100, AVC-Intra, and Long GOP XDCAM HD 1080i\* as supported import formats.  
\*XDCAM 4:2:2, 1080i, Long GOP 50mbit is supported  
\*XDCAM HD 720p is not yet supported.
- When MediaFrame is enabled, metadata can be mapped from the removable media device to MediaFrame.
- Default colors have been changed for RMI
- The Help->About box now includes a System Information Utility.

## Aurora Ingest - VTR Ingest

- Added the ability to have primary and backup records.
- When MediaFrame is enabled, added a keyword scan feature, which automatically records an entire tape and marks keywords for every timecode break that is found.
- Metadata can be added either on a tape basis or clip by clip basis.
- The Help | About box now includes a System Information Utility.

## Software Version compatibility

Aurora Ingest 6.5.1.132 was qualified using the following software versions:

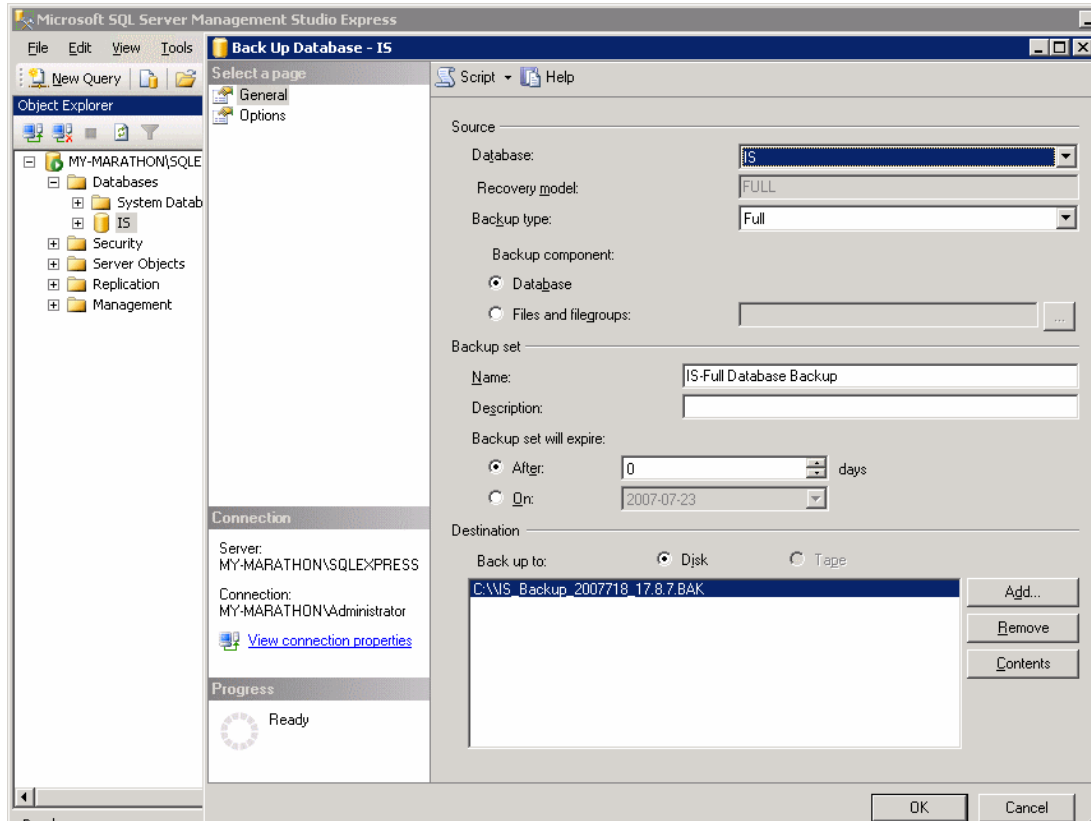
Component or system	Version
Aurora Browse	6.5.1.4
Aurora Edit	6.5.1.440
Aurora Playout	6.5.1.62
K2 system	3.2.74.967 or 3.2.74.1028
Summit system	7.0.11.1081
Generic iSCSI Installer	3.2.74.967 or 3.2.74.1028 or 7.0.11.1081
GVG_MLib Installer	3.2.74.967 or 3.2.74.1028 or 7.0.11.1081
MediaFrame	6.5.1.17
RMI Core	6.5.1.440 (For RMI Installation)
SNFS	3.1.2 Build lcrs_3.1.2_RC25225_6138 (For RMI Installation within K2 SAN)
ENPS	5.00.0123 or 6.00.0009 (For use with Scheduled Events)
Panasonic P2 Driver	2.03.0002 (Contact Panasonic for driver)
Sony XDCAM FAM Driver	2.04 (Contact Sony for driver)
Hauppauge	5.9F
DeckLink	6.4
Microsoft Windows	XP with Service Pack 3 (Windows Vista is NOT currently supported)
Microsoft Windows Server	Win2K3 Server R2 (For Ingest Server Component only)

## Backing up Aurora Ingest Database

It is advisable for users to back up the Aurora Ingest database before upgrading to the latest version of the software. With a database backup, you can avoid any loss of feed schedules and the need to key-in everything again in case of a system crash. The backup could also be placed on another machine or an external drive for extra precaution.

Backing up can be done easily using Microsoft SQL Server Management Studio Express. Listed below are the steps to back up your Aurora Ingest database:

1. Login to Windows XP as an administrator or as a user with administrative rights.
2. Go to **Start > Programs > Microsoft SQL Server 2005** and select SQL Server Management Studio Express to launch the application.
3. Connect to your SQL Server by Windows Authentication.
4. Double-click on Databases and you see the folder expands to show System Databases and IS.



5. Right-click on IS and select **Tasks > Back Up**.
6. From the Database dropdown list, select IS or type “IS” if it’s not listed in the dropdown.
7. Select Full from the Backup type dropdown list.
8. Check Database under the Backup component.
9. Key in the backup name. You can also enter the description of the database if you need to.
10. If you want to set an expiration date for the database backup, select the expiration date or duration needed before the database is set to expire. If not, just leave the default value as it is.
11. Check the destination of your backup to Disk.
12. Then, select the backup destination by selecting Add and browse to the folder where you want to store your database backup into.

13. In the Options page, select Back up to the existing media set and Overwrite all existing backup sets.
14. Click **OK**.

**NOTE: DO NOT delete Aurora Ingest folder in the registry key and 2 files (IS\_Data.mdf and IS\_Log.ldf) in C:\Program Files\Microsoft SQL Server\90\Tools\Bin if you don't have a backup on another machine or an external drive. All data in the current database could not be retrieved if those files were to be deleted and the system crashed.**

## Upgrading Aurora Ingest

Before upgrading from one version of Aurora Ingest to another, you should close all components in the current Aurora Ingest application.

Aurora Ingest installer provides an option to install Microsoft SQL Express 2005 or attaching your Aurora Ingest database to the full version of Microsoft SQL Server 2005. The full version of SQL Server 2005 allows customers to run the Aurora Ingest - Server database component on the same server as the NewsShare DSM.

This means that both news database and ingest database will share the same SQL processes. If you want to move your current Aurora Ingest database that runs on SQL Express 2005 to your NewsShare DSM machine that runs the full version of SQL Server 2005, refer to [“Migrating Aurora Ingest Database” on page 13](#).

To upgrade Aurora Ingest, follow the steps below:

1. Uninstall all components in the current version of Aurora Ingest by selecting **Start > Control Panel > Add or Remove Programs**.
2. Run the Aurora Ingest 6.5 installer and follow the steps described in [“Installing Aurora Ingest” on page 11](#).
3. Reboot your machine after the installation is complete.

**NOTE: When installing onto a clean system, Aurora Ingest will embed the SQL Express 2005 install into its installer. The full version of Microsoft SQL Server 2005 is available as an optional item.**



## System Specifications

Prior to installing Aurora Ingest onto a server or remote client, it is important to make sure that the system meets or exceeds the recommended specifications found below. RMI is noted later in the document.

**NOTE: Minimum specifications for SD configurations are provided only for existing SD customers upgrading to 6.5. New customers should use HD configurations.**

Aurora Ingest (VTR Ingest, VTR Controller, Scheduler),		
	MINIMUM Spec	RECOMMENDED Spec
<b>Processor</b>	Intel Core 2 Dual Core 2.3 GHz	Intel Core 2 Dual Core 2.3 GHz
<b>Memory</b>	1 GB	2 GB
<b>Graphics</b>	Integrated or discrete graphics w/ 128 MB of memory and support for Direct3D 9 and Shader Model 3.0	Discrete graphics w/ 128 MB of dedicated memory and support for Direct3D 9 and Shader Model 3.0
<b>System Drive</b>	80 GB 7200 RPM SATA	80 GB 7200 RPM SATA
<b>Optical Drive</b>	CD/DVD	CD/DVD
<b>Network</b>	Gigabit Ethernet	Gigabit Ethernet
<b>OS</b>	Windows XP Pro 32 SP3	Windows XP Pro 32 SP3
<b>Notes</b>	<p>It is the customer's responsibility to insure that the system has sufficient number and type of expansion slots to meet the intended use.</p> <p>AURORA_IN_BASE and AURORA_IN_LOGGER requires one free PCI slot for video capture board and one free PCI slot for Control 422 board.</p>	

Aurora Ingest Server		
	MINIMUM Spec	RECOMMENDED Spec
<b>Model</b>	HP xw4600	Dell PowerEdge 2950
<b>Processor(s)</b>	Intel Core 2 Dual Core 2.3 GHz	Intel Xeon 1.0 GHz
<b>Memory</b>	1 GB	2 GB
<b>Graphics</b>	Integrated or discrete graphics w/ 128 MB of memory and support for Direct3D 9 and Shader Model 3.0	Integrated graphics
<b>System Drive</b>	80 GB 7200 RPM SATA	36 GB 7200 RPM SATA or SAS
<b>Optical Drive</b>	CD/DVD	CD/DVD
<b>Network</b>	Gigabit Ethernet	Gigabit Ethernet
<b>OS</b>	Windows XP Pro 32 SP3	Windows Server 2003 R2 32 SP2

Aurora Ingest RMI (SD)*		
	MINIMUM Spec	
<b>Processor(s)</b>	Intel Core 2 Dual Core 2.33 GHz OR Intel Xeon 5140 Dual Core 2.33 GHz OR AMD Opteron 270 Dual Core 2.0 GHz	
<b>Memory</b>	2 GB	
<b>Graphics</b>	Discrete graphics w/ 128 MB of dedicated memory and support for Direct3D 9 and Shader Model 3.0	
<b>System Drive</b>	80 GB 7200 RPM SATA	
<b>Media Drives</b>	2 x 250 GB 7200 RPM SATA striped	
<b>Optical Drive</b>	CD/DVD	
<b>Network</b>	Gigabit Ethernet (2)	
<b>Firewire/1394</b>	As needed	
<b>OS</b>	Windows XP Pro 32 SP3	
<b>Notes</b>	A Gigabit Ethernet card and a Firewire/1394 card shall NOT be installed on the same PCI bus segment (eg. adjacent PCI slots), since this can cause very poor performance.	

Aurora Edit HD desktop, Aurora Ingest RMI (HD)		
	MINIMUM Spec	RECOMMENDED Spec
<b>Processor(s)</b>	Intel Core 2 Quad Core 2.33 GHz OR <i>Two</i> Intel Xeon 5160 Dual Core 3.0 GHz	<i>Two</i> Intel Xeon 5410 Quad Core 2.33 GHz
<b>Memory</b>	3 GB	3 GB
<b>Graphics</b>	Discrete graphics w/ 256 MB of dedicated memory and support for Direct3D 9 and Shader Model 3.0	Discrete graphics w/ 384 MB of dedicated memory and support for Direct3D 9 + 10 and Shader Model 4.0
<b>System Drive</b>	80 GB 7200 RPM SATA	80 GB 7200 RPM SATA
<b>Media Drives</b>	2 x 250 GB 7200 RPM SATA striped	2 x 250 GB 7200 RPM SATA striped
<b>Optical Drive</b>	CD/DVD	CD/DVD
<b>Network</b>	Gigabit Ethernet (2)	Gigabit Ethernet (2)
<b>Firewire/1394</b>	As needed	As needed
<b>OS</b>	Windows XP Pro 32 SP3	Windows XP Pro 32 SP3
<b>Notes</b>	<p>A Gigabit Ethernet card and a Firewire/1394 card shall NOT be installed on the same PCI bus segment (eg. adjacent PCI slots), since this can cause very poor performance.</p> <p>It is the customer's responsibility to insure that the system has sufficient number and type of expansion slots to meet the intended use. (For example, to accommodate network and/or FireWire cards.)</p>	

## Installing Aurora Ingest

**NOTE:** Settings from a previous install of Ingest will not be automatically filled in, so you need to ensure that you fill in the correct settings. This is especially important on the “Specify Aurora Ingest Server Configuration” page in the installer.

To install the Aurora Ingest software on your computer, insert the Aurora Ingest CD-ROM into the machine’s CD-ROM drive and follow these instructions:

On this screen...	Do this...
Welcome	Click <b>Next</b> .
License Agreement	Select <b>I Agree</b> and click <b>Next</b> .
Choose Destination Location	Click <b>Next</b> .
Select Components	Specify the Aurora Ingest applications to install: <b>Server</b> , <b>Scheduler</b> , <b>VTR Controller</b> , <b>VTR Ingest</b> , or <b>RMI</b> .  With <b>Server</b> component, Microsoft .NET Framework 2.0 and Microsoft SQL Server Express database components will also be installed by default.
Specify Server Name	Enter the host name of Aurora Ingest Server that will be used by Aurora Ingest applications.  Select the SQL Server configuration that will be used by Aurora Ingest Server.  If you choose SQL Server 2005, select the server instance from the dropdown list.  Then, click the Test Connection button to ensure that the SQL Server is accessible.
Start Installation	Click <b>Next</b> .
Installation Complete	Click <b>Finish</b> .

### Installing RMI Core (Only for RMI Client Workstations)

Prior to installing RMI, the RMI Core must be present on the system. RMI Core is part of the Aurora Setup installation procedure, so please follow the directions below when executing this process.

Follow the steps below after *Setup.exe* is found within the Aurora Setup folder and launched:

1. Select **Next** at the introduction page.
2. Read and agree to the License Agreement prior to clicking **Next**.
3. Click **Next** and select RMI Core, followed again by **Next**.
4. Select **Shared**.
5. Click **Next**.
6. Enter DSM name(s) and select **Next**.
7. Browse to Shared Media Drive for **VibrantAVFiles** location and click **Next**.

8. Browse to Local Media Drive for **VibrantAVCache** location and click **Next**.
9. Enter the Shared Drive Letters being sure to add a comma between each drive and click **Next**.
10. Click **Next** at the Ready to Install page.

**NOTE: - RMI should be installed onto a system that is the equivalent of an Aurora Edit system depending upon the format or removable media. Not adhering to at least the minimum specification will possibly result in slower import times and disrupted playback with the trim tool.**

**NOTE: 2 - The RMI Core Installation will check for mapped drive status prior to completing the install. It is recommended that shared media drives get mapped prior to running the install.**

**NOTE: 3 - Windows XP Service Pack 3 automatically configures a Windows Firewall for the client. It is recommended, for clients attached to networks with an existing Firewall, that this Windows Firewall be disabled. For those without an external Firewall, individual ports may need to have restrictions lifted as Windows will block the unknown connection. To unblock a port, go to Start->Settings->Control Panel->Security Center->Windows Firewall->Exceptions and add the Aurora Ingest application to the firewall exceptions.**

## Installation Notes

- Prior to installing Aurora Ingest onto a clean system that will support video overlay (Scheduler or VTR Ingest), install the Hauppauge WinTVGo Video Capture Card or Blackmagic Design DeckLink Video Capture Card along with their drivers included on the installation CD.
- RMI requires either the Panasonic P2 or Sony XDCAM FAM driver for proper interaction with these types of removable media devices.
- RMI requires the RMI Core 6.5 installation for proper functionality. In addition, RMI should be added into the overall stream count of the shared system as it will be writing directly to the shared storage.
- RMI should only be installed on Windows XP Operating Systems.
- Aurora Ingest is designed to run with a screen resolution of 1280x1024 for standard configurations. Some Aurora Ingest windows will not display properly if Windows is configured to use large fonts.
- For setting up an Encore router, limiting names of Sources, Destinations, Levels, Salvos, Areas, control panels and other names intended for display on Encore hardware panels to 7 or 8 characters is strongly recommended. Names longer than 8 characters will be truncated and the extra characters will not appear to the panel operator. Names with 8 characters will also have its last character overwritten if a Breakaway condition exists.

## Licensing Aurora Ingest

Once the Aurora Ingest software is installed, you are provided with a 30-day demo license. You need to get a software license number from Grass Valley in order to install the permanent license. Obtaining the software license number is important because you cannot launch channels or configure Aurora Ingest after your 30-day demo license has expired.

1. Select Start | Programs | Grass Valley | Aurora | License Request.

The Aurora License wizard begins.

2. Fill out the License Request for your system.
3. Send the request to the email address stated in the License Request wizard.

You will be provided with a software license number from Thomson Grass Valley.

## Migrating Aurora Ingest Database

Database migration should be done if you need to move Aurora Ingest database from the current machine to a brand new machine, or to move your Aurora Ingest database to the machine that runs your NewsShare DSM.

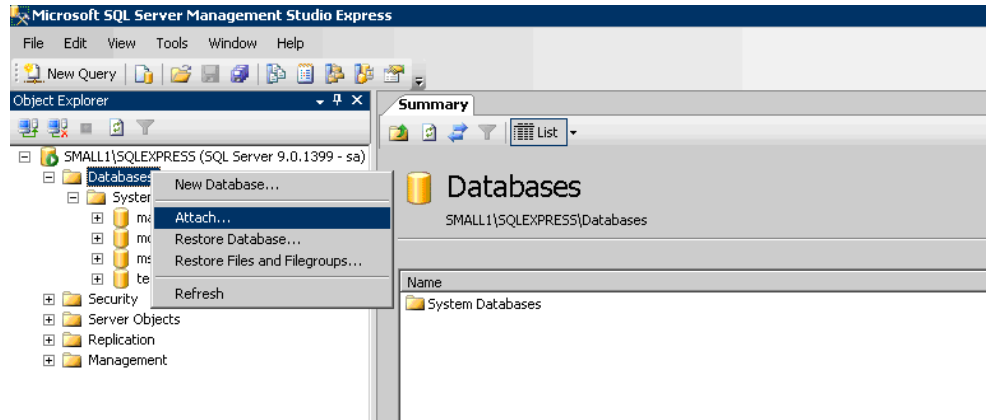
Follow the steps below for migration process of the Aurora Ingest database:

1. Run the latest Aurora Ingest installer on the existing machine to update the Aurora Ingest database.
2. Export the Aurora Ingest Server registry key under “**My Computer\HKEY\_LOCAL\_MACHINE\SOFTWARE\Grass Valley\Aurora Ingest\Server**” from existing machine.

***CAUTION: DO NOT launch the Microsoft SQL Server Management Studio Express on both existing machine and new machine. If you do this, you cannot back up the database.***

3. Shut down the Aurora Ingest - Server application on the existing machine and copy two files (IS\_Data.mdf and IS\_Log.ldf) from C:\Program Files\Microsoft SQL Server\90\Tools\Binn from existing machine to same directory path in new machine. Make sure these two files are NON-READ ONLY.
4. Make sure the “SQLServer (or SQLEXPRESS)” service is running on new machine. You can check the state of the service in the “Services” application.
5. Launch the Microsoft SQL Server Management Studio Express on new machine.
6. Log on, using Window Authentication Mode, to attach the Aurora Ingest database.

Attach the Aurora Ingest database as shown below.



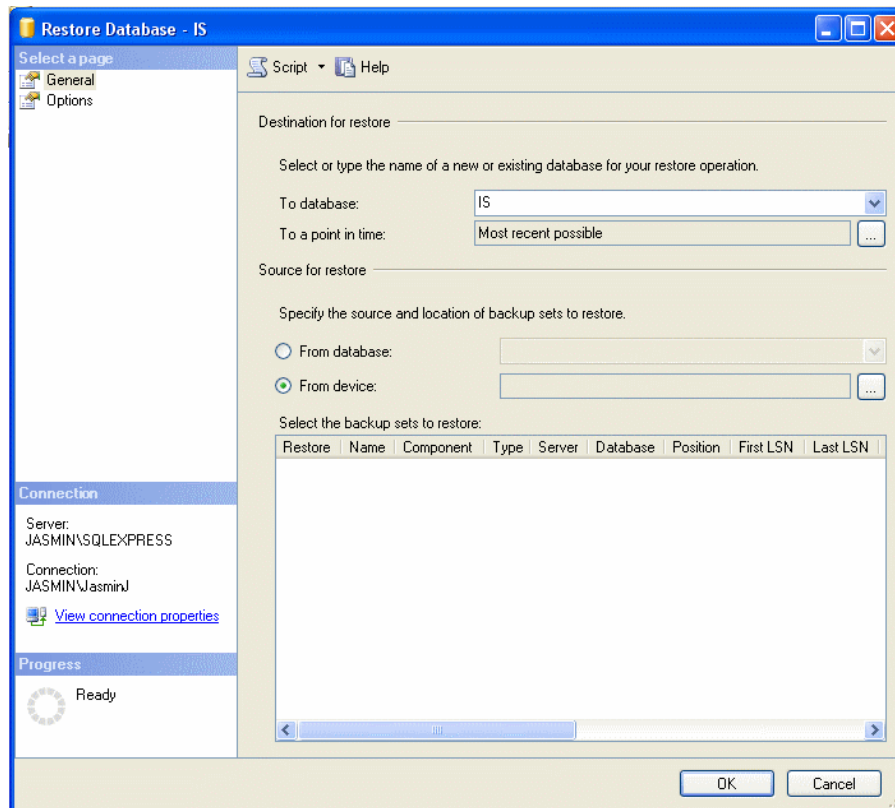
7. Select the IS\_Data.mdf from the same directory (C:\Program Files\Microsoft SQL Server\90\Tools\Binn).
8. After the Aurora Ingest database had been attached successfully, you should be able to view Aurora Ingest database folder shown under the Databases root folder.
9. Import the server registry key to new machine.
10. Run the Aurora Ingest 6.5 installer on the new machine.
11. Reboot the machine after installation is complete.
12. License the Aurora Ingest software (Number of Channels, Scheduler, VTR Ingest and RMI). For more information on licensing, see [“Licensing Aurora Ingest” on page 13](#).
13. Remove the licenses from the existing machine.
14. Launch the Aurora Ingest - Server application on the new machine. Select **Tools | Options** and click on the System tab.
15. Edit settings of SDB Server, XMOS Server and SabreTooth Server according to the new machine.


## Restoring Aurora Ingest Database

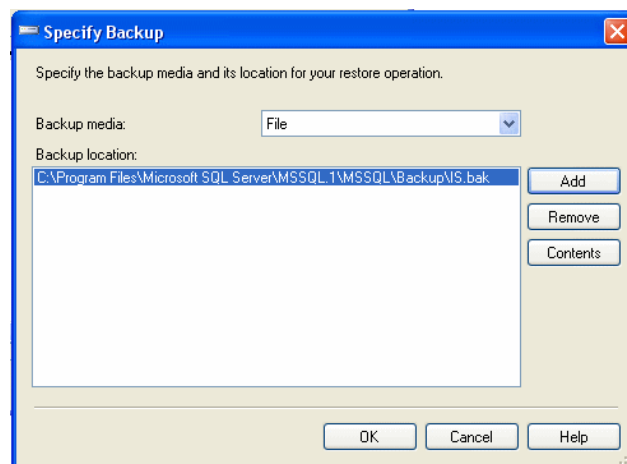
In case of a system crash or a corrupted database, database restore could easily be done using Microsoft SQL Server Management Studio Express. Before proceeding to restore, make sure that database back-up had been done and the back-up location identified. Follow the steps below to restore your Aurora Ingest database:

1. Login to Windows XP as an administrator or as a user with administrative rights.
2. Shut down Aurora Ingest - Server if it's currently running on your machine.
3. Go to **Start > Programs > Microsoft SQL Server 2005** and select SQL Server Management Studio Express to launch the application.
4. Connect to your SQL Server by Windows Authentication.
5. Right-click on Databases and select Restore Database.

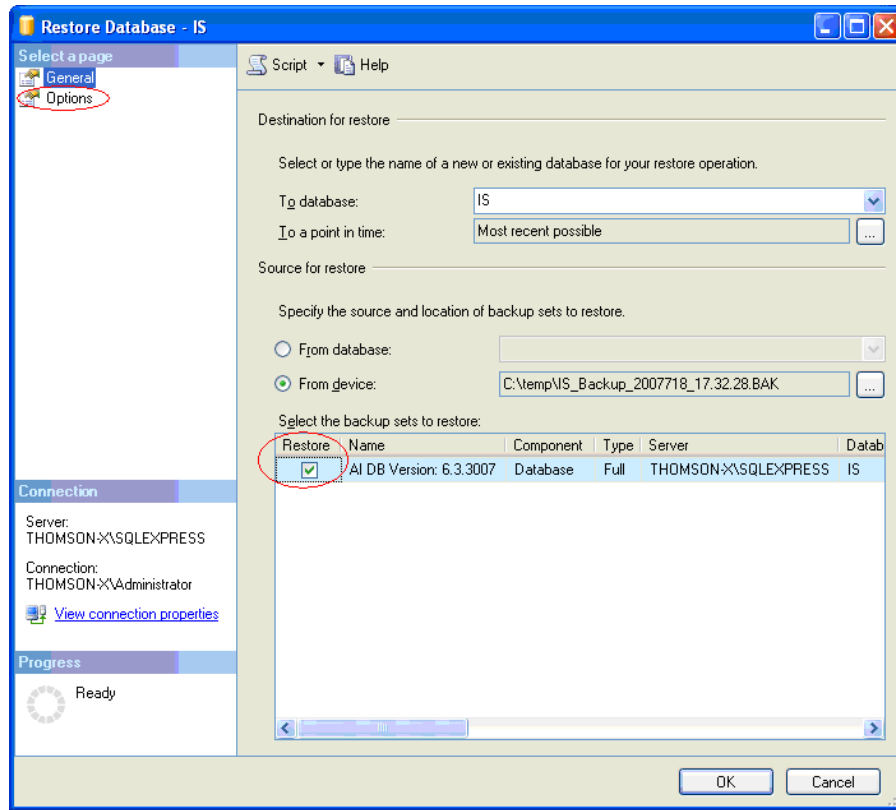
- In the Destination for restore section, select IS from the database dropdown list. Key in "IS" if it's not in the dropdown list.



- In the Source for restore section, select From device and click  to browse to the folder that you had stored your backup.
- Click Add to get to the folder where you had saved the backup, select the backup file and click OK twice.



9. Check the box under Restore column to select the backup database to be restored.



10. In Options page, check Overwrite the existing database.

11. Click **OK**.

## Installing System Imaging Software

Aurora systems use Acronis Imaging software, version 3647, which allows you to back up your system. When the system boots using Acronis Imaging software, select either Safe Version, Full Version, or boot into Windows.

Safe version should normally be used to restore or create the `c:\` partition from the backup partition, drive `f:\`.

Full version loads additional USB drivers, which allows a user to backup or restore with a USB drive. However, the boot process hangs unless the following parameters are entered prior to selecting “Full Version”.

1. Press **F11**.
2. Change the boot parameters from “**quiet**” to “**quiet acpi=off noapic**”.
3. Click **OK**.
4. Select the Full Version to load True Image.

**NOTE: Acronis Imaging software recognizes Rev Pro drives.**



## Setting up AMP control on K2 or Summit Media Client

With Aurora Ingest Server, K2 or Summit Media Clients are controlled via AMP Protocol over Ethernet.

To set up AMP control of a Media Client:

1. In AppCenter on the media client, click the **Options** button for the desired panel.
2. Set the **Control** setting to either “**Remote Only**” or “**Remote and Local**” and the **Protocol** setting to “**AMP**”. Repeat this step for each panel that will be controlled remotely by Aurora Ingest.
3. In the Ingest Server application, go to **Tools | Options | Media Server** and add the name of the media client.
4. In the Ingest Server application, go to **Tools | Options | Channel** and add each channel that will be controlled on the K2 or Summit. In the Channel dropdown list, “VTR1” corresponds to the “R1” panel on the K2 or Summit, “VTR2” corresponds to the “R2” panel, etc.

See the “Installing and Configuring Aurora Ingest” section of the *Aurora Ingest System Guide* for more detailed information about configuring media servers and channels.

## Individual Component Usage Notes

### Aurora Ingest Server

- The remote clients should be slaved to the time of day of the Aurora Ingest Server. If an offset is present, scheduled events will be started according to the time of the server component rather than the apparent time of the remote scheduler client.
- When connecting to an AMP channel on the Media Client, it is important that the AMP setting on the Media Client is set to AMP Recorder and not AMP Player. The connection will succeed regardless, but record issues will occur if the channel is set to AMP Player.

### Aurora Ingest - Scheduler

- The time of day format within the Scheduler is directly related to the current time of day format for the individual client machine. To change this, go to **Start->Settings->Control Panel->Regional and Language Options** and launch the Customize tool. Once in the customize tool, enter the Time tab and set your time format accordingly.

**NOTE:** *Changes to the Scheduler’s time format will only be seen after a relaunch of the Scheduler application.*

- Scheduled records must be separated by at least 10 seconds between the end of the outgoing feed and the start of the incoming feed. To account for this, the default duration of feeds has been set to 59 minutes and 50 seconds in **Tools | Options | General**. It is recommended that any edits to the default duration reflect the 10

second minimum separation.

- The scheduler will hold onto past events history for three weeks.
- Recurring events can be added for up to one year in advance. These events can be modified later in order to extend the duration of the recurring item.
- For scheduled recurring events, removing a channel from Aurora Ingest Server will reassign those recurring events to other available channels at start time. For non-recurring events, those events will be erased rather than reassigned to other channels.

***NOTE: Re-introducing the once removed channel may result in incorrect scheduling for that channel as the database may hold on to events not seen in the user interface of the scheduler. It is recommended that scheduled events get moved from the channel prior to the channel's removal.***

## Aurora Ingest - Scheduler with ENPS Assignment Grid

- Please refer to the Aurora Ingest System Guide for instructions on configuring ENPS for scheduling events and setting up the ENPS Assignment Grid. If this guide is not yet in your possession, please contact customer support for download information.
- When using ENPS to schedule events, it is important to note that error notifications typically handled within the Aurora Ingest Scheduler will not be as readily available within the ENPS Assignment Grid. For instance, naming conflicts, channel conflicts, elapsed events, etc. will not always be flagged within the ENPS grid. It is important to also monitor the Aurora Ingest Scheduler interface in order to get a more accurate representation of the current activity.

## Aurora Ingest - RMI

- RMI requires a relaunch after the news DSM is rebooted. The application will not prompt for this, but subsequent import attempts will fail.
- If changing drive volumes for importing clips, the Destination AV Path within **Tools | Options** must be directed to the VibrantAVFiles folder within the desired volume.
- After Sony XDCAM is plugged in and attached to RMI application, XDCAM pop-up will be displayed. To disable XDCAM pop-up in Windows 2000 and Windows XP operating systems, follow the steps below:
  - a. Go to **Start->Run** and type in '**gpedit.msc**'.
  - b. Once in, go to Administrative Templates.
  - c. Then click on **System**.
  - d. Once in System, look in the right hand pane and search for 'Turn off AutoPlay'.
  - e. Open **Turn off AutoPlay**.
  - f. Select CD-ROM drives in the dropdown.
  - g. Finally, select the Enable check box and click **OK**.

## Aurora Ingest - VTR Ingest

- If multiple clients are pointed to the same VTR, each client will report a successful connection. When operating the VTRs, however, the multiple clients may interfere with each other. It is important to allocate VTRs properly so collisions of this nature do not occur.
- Records have a frame accuracy recording window of +/- 3 frames for the VTR Ingest with K2.
- When controlling a VTR that is in 720p mode, transport commands, such as single frame and ten frame advances may not be frame accurate.

## Known issues

The following limitations are present in this Aurora Ingest Software 6.5.1.132 release. If you wish to obtain more information about these limitations, please mention the reference numbers that follow the description of each limitation. These known issues will be resolved in the future.

Description X-keys generic Keyword button adds keyword with blank name, rather than default name. (99410)

Workaround When adding a keyword button for X-Keys, opt to add a name for the keyword.

Description On clean install with no MediaFrame configuration, Scheduler default UI has big blank Search window. (99287)

Workaround This window is harmless. Close the dialog and subsequent relaunches of the Scheduler will not present the window.

Description Having completed recurring events in Scheduler prevents the ability to create a series with the same name going forward. (87061)

Workaround Delete the event from today that already finished recording. Now Scheduler will let you add a new series with that name.

Description With more than 100 hours of storage space remaining on K2, Ingest misreports storage. (86146)

Workaround Aurora Ingest will begin to properly report storage once the capacity has fallen below 100 hours.

Description If logged in as user without "Modify" rights to V:\VibrintXDCAMFiles, canceling RMI cache prevents it from caching again. (98692)

Workaround You need to turn on Modify access for the V:\VibrintXDCAMFiles folder if using RMI as a non-administrator in an environment where Security is enabled.

---

*Known issues*

Description Thumbnails don't appear for keywords marked using X-keys. (94269)  
Workaround Marking keywords manually through the MediaFrame plug-in window will create a keyword if proxy media exists.

Description The extra “\_b” appended to backup feed clip name could break conformance from remote system. (80235)  
Workaround Change the following value in the Windows registry from 1 to 0:  
**HKEY\_LOCAL\_MACHINE\SOFTWARE\Grass Valley\Aurora Ingest\Server\Feed\Use Backup Clip Name**

Description Crash record of gang-roll events could fail if the default clip name consists of more than 32 characters. (78916)  
Workaround As the current limit to a default clip name is 26 characters, ensure that router source name (which gets added to default clip name for gang roll events) consists of less than 6 characters. Hence, the default clip name would not consist of more than 32 characters.

Description If crash record default bin doesn't exist on media server, Scheduler shows "Error obtaining clip duration from the media server". (94791)  
Workaround It is highly recommended that record directories exist on the media client prior to attempting records or sends.

Description Clips that were part of a merged import don't show "Exists" status after relaunching RMI. (98929)  
Workaround No workaround at this time.

Description When custom metadata fields are reordered in Aurora Browse, they do not get reordered in Ingest. (89491)  
Workaround Close and relaunch Schedule client in order to see the updated order of custom fields.