

Aurora Playout Version 6.1 Release Notes and Installation Instructions

These release notes contain updated information about the Aurora Playout system, including latest features and fixes.

Information in the release notes supersedes information in any of the other Aurora Playout documentation.

For additional information, see the **Aurora Playout User Guide**. The latest Grass Valley documentation can also be found online at:

<http://www.thomsongrassvalley.com/docs/>

Table of Contents

| | |
|---|---|
| <i>Grass Valley Product Support</i> | 2 |
| <i>What's new in Aurora Playout 6.1</i> | 3 |
| <i>What's new by version</i> | 3 |
| <i>Fixes included in version 6.1</i> | 4 |
| <i>Software Version compatibility</i> | 5 |
| <i>Installing Aurora Playout</i> | 6 |
| <i>Upgrade Instructions</i> | 7 |
| <i>Licensing Aurora Playout</i> | 7 |
| <i>Known issues</i> | 8 |

Copyright © 2007 Grass Valley, Inc. All rights reserved. Printed in the United States of America. Portions of software © 2000 – 2007, Microsoft Corporation. All rights reserved. This document may not be copied in whole or in part, or otherwise reproduced except as specifically permitted under U.S. copyright law, without the prior written consent of Grass Valley, Inc., P.O. Box 59900, Nevada City, California 95959-7900.

Grass Valley, K2, Aurora, Turbo, M-Series, Profile, Profile XP, NewsBrowse, NewsEdit, NewsQ, NewsShare, NewsQ Pro, and Media Manager are either registered trademarks or trademarks of Grass Valley, Inc. in the United States and/or other countries. Other trademarks used in this document are either registered trademarks or trademarks of the manufacturers or vendors of the associated products. Grass Valley, Inc. products are covered by U.S. and foreign patents, issued and pending. Additional information regarding Grass Valley, Inc.'s trademarks and other proprietary rights may be found at www.thomsongrassvalley.com.

Product options and specifications subject to change without notice. The information in this manual is furnished for informational use only, is subject to change without notice, and should not be construed as a commitment by Grass Valley, Inc. Grass Valley, Inc. assumes no responsibility or liability for any errors or inaccuracies that may appear in this publication.

Grass Valley Product Support

To get technical assistance, check on the status of a question, or to report new issue, contact Grass Valley Product Support via e-mail, the Web, or by phone or fax. Contact Grass Valley first regarding problems with third party software on Grass Valley products, such as the Microsoft® Windows® operating system, Windows Media® player, Internet Explorer® internet browser, and SQL Server™.

Web Technical Support

To access support information on the Web, visit the product support Web page on the Grass Valley Web site. You can download software or find solutions to problems by searching our Frequently Asked Questions (FAQ) database.

World Wide Web: <http://www.thomsongrassvalley.com/support/>

Technical Support E-mail Address: gvtechsupport@thomson.net.

Phone Support

Use the following information to contact product support by phone during business hours. Afterhours phone support is available for warranty and contract customers.

| | | | |
|---|---------------------------------------|--|--|
| International (France) | +800 80 80 20 20 +33 1 48 25 20 20 | Italy | +39 02 24 13 16 01 +39 06 87 20 35 42 |
| International (United States, Canada) | +1 800 547 8949 +1 530 478 4148 | Belarus, Russia, Tadzikistan, Ukraine, Uzbekistan | +7 095 258 09 20 +33 (0) 2 334 90 30 |
| Hong Kong, Taiwan, Korea, Macau | +852 2531 3058 | Indian Subcontinent | +91 11 515 282 502 +91 11 515 282 504 |
| Australia, New Zealand | +61 1300 721 495 | Germany, Austria, Eastern Europe | +49 6150 104 444 |
| Central, South America | +55 11 5509 3440 | Near East, Africa | +33 1 48 25 20 20 |
| China | +861 066 0159 450 | Netherlands | +31 (0) 35 62 38 421 |
| Belgium | +32 (0) 2 334 90 30 | Northern Europe | +45 45 96 88 70 |
| Japan | +81 3 5484 6868 | Singapore | +65 6379 1313 |
| Malaysia | +603 7805 3884 | Spain | +41 487 80 02 |
| Middle East | +971 4 299 64 40 | UK, Ireland, Israel | +44 118 923 0499 |

Authorized Support Representative

A local authorized support representative may be available in your country. To locate the support representative for your country, visit the product support Web page on the Grass Valley Web site.

What's new in Aurora Playout 6.1

Aurora Playout version 6.1 is an interim release; in conjunction with latest 720p support for the release of Aurora 6.1 suite of products. Aurora Playout 6.1 includes performance improvements and fixes to several customer issues, while more significant features to the application will be in the near-future release.

New in this release:

- **Support for 720p** - High definition (HD) format of 720 lines of progressive scan or better known as 720p, is now supported for playout.

To learn about features of past releases, refer to the following section [“What's new by version”](#).

What's new by version

Version 6.1 includes all features and performance improvements introduced by previous releases. The following describes those features in recent past releases:

Version 6.0b

- **Support for M-Series iVDR** - Aurora Playout is qualified for use with M-Series iVDR in addition to the existing support for K2 platform.

Version 6.0

- **Archive Play Deck Control** - Archive Play can be configured to remotely start and stop recording to a deck through RS-422 control.
- **Automatically Exit Archive Play** - When Archive Play finishes, the application automatically returns to normal playback mode.
- **Disable GPI Input in Archive Play** - An option has been added to disable GPI inputs while in Archive Play mode.
- **Ethernet Channel Control** - As an alternative to RS-422 control, playback channels can be configured to connect via Ethernet.
- **Rundown Calendar (ENPS only)** - When connected to ENPS, a rundown calendar allows filtering the rundown list by a specific date.
- **Run Time Counter** - For logging purposes, a Run Time counter can be started to record a Hit Time for each story. In Archive Play mode, this counter also displays the Total Run Time for the opened rundown(s).
- **Distinct Play/Stop GPI Triggers** - Play and Stop GPI commands can be assigned to separate triggers, rather than having a combined Play/Stop toggle.
- **Connection Status Lights** - Status indicator lights have been added to allow a quick visual verification that components are connected.
- **Prevent Pause after Play** - A configurable option allows you to prevent an accidental Stop command within a few seconds of hitting Play.
- **Flashing Sync Indicator** - The Sync button now flashes when sync has been broken between Playout and the Newsroom Computer System.
- **Configuration Summary Pages** - For GPI, Channel, and Function Key

configuration, a Summary page allows you to see all settings in one table.

- **Improved Buddy Server Support** - When connected to an ENPS buddy server, the application will automatically switch back to the primary ENPS server when it becomes available.
- **16:9 Thumbnails** - An option allows the use of either 4:3 or 16:9 aspect ratio for thumbnails.
- **Automatic Server Reconnect** - After a media server is temporarily offline (such as during a reboot), SDB Server and Housekeeper will reconnect to it once it's available, without user intervention.
- **Housekeeper Direct Delete** - In Housekeeper, you can optionally delete clips and placeholders directly, bypassing the Recycle Bin.
- **Assignment List Rundown View** - In the Assignment List Plug-in, a tree view allows the sorting of items by rundown.
- **Break Indicator** - A special "Break" placeholder can be inserted into a rundown so that breaks are visible in the Playout playlist.
- **Channel-specific X-keys** - When using the X-keys Jog/Shuttle controller, the ability to assign channel-specific commands has been added.

Fixes included in version 6.1

- (79039) - Application could crash with runtime error during normal cue and play operations.
- (78709) - Application hang could occur when closing NCS rundown while clips were still cued.
- (80256) - Virtual Memory usage from Aurora Playout application could grow very large and cause an unresponsive system.
- (77207) - Momentary disconnection could occur when cueing clips to RS422 channels.
- (78061) - Clip countdown could get stuck at 00.00.00.00 during playback in mirrored channels.
- (78062) - Status of played clip in a mirrored channel could get stuck at "Roll" after the clip was ejected.
- (79056) - After changing categories on the clip browser, thumbnails would not appear in the playlist when clips become available.
- (77389) - Changing a story's channel assignment from a Newsroom Computer System did not trigger the Auto Recue feature.
- (68767) - After receiving sequences from Aurora Edit, the frame of video that displayed as the thumbnail could be inconsistent.
- (80232) - When floating a playing clip, an eject prompt could appear twice.

Software Version compatibility

Aurora Playout 6.1 was qualified using the following software versions:

- K2 system 3.1.13.708
- M-Series iVDR 2.0.13.567
- Aurora Edit 6.1
- Aurora Ingest 6.1
- ENPS 5.00.0053
- iNEWS Client 2.1.7.7 with iNEWS Server 2.1.5.23 and MOS Gateway 2.6.2.4
- Octopus 5.2.0.6871
- Microsoft Windows XP, Service Pack 2

NOTE: Aurora Playout 6.1 has not been fully qualified with Profile. It is for use with K2 and M-Series media servers only.

Installing Aurora Playout

The various Aurora Playout components reside on multiple computers. The following table indicates where each component is typically installed:

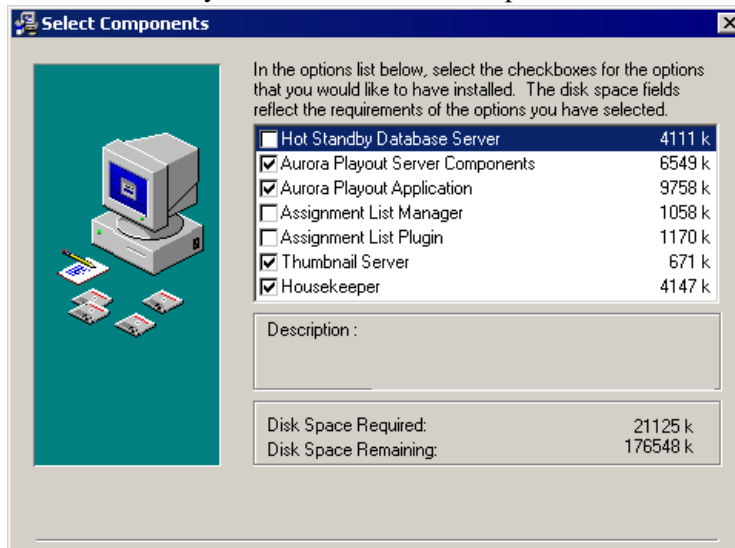
| Component | Machine where you install it... |
|--|---|
| Aurora Playout application | Aurora Playout computer <i>NOTE: It is recommended that Aurora Playout is run at a display resolution of 1280 x 1024.</i> |
| Thumbnail Server | Separate PC for the Server Components. <i>NOTE: You do not need to install Thumbnail Server if you are using M-Series iVDR or K2 as your Media Server.</i> |
| Aurora Playout Server Components: XMOS Server SDB Server | Recommend installing on a separate computer, but may be installed on Aurora Playout computer. <i>NOTE: When the XMOS Server application is running on a Windows XP system, it is recommended that the "Windows Firewall" feature be turned off, as it can adversely affect the speed of MOS communication with the newsroom computer system.</i> |
| Housekeeper | Aurora Playout computer or another PC on the same network. |
| Assignment List Manager (standalone version) | Non-NCS computers, usually used by Newsroom Producers. |
| Assignment List Plug-in | All NCS client computers. See Aurora Playout User Guide for installation instructions. |
| Hot Standby Database Server | Optional; install on a PC on the same network as the Aurora Playout computer. |

Because you must configure some components with the locations of other components, you should plan your overall installation before you begin.

To install the Aurora Playout application and its components:

1. Insert the Aurora Playout CD into the CD-ROM drive.
2. Navigate to the CD and double-click **SetupAuroraPlayout.exe**.

3. Click **Next** until you reach the Select Components screen.



4. At the Select Components screen, check the boxes for the component(s) that you want to install.
5. Click **Next** to start the installation.
6. Click **Finish** at the Installation Complete screen.
7. Configure each component by following instructions in the Aurora Payout User Guide.

Upgrade Instructions

When upgrading from one version of Aurora Payout to another, you should close the current Aurora Payout application.

It is not mandatory, but it is advisable that you uninstall Aurora Payout's components before installing the new version. Reboot your machine after the installation is complete.

Licensing Aurora Payout

Once you have installed the Aurora Payout, you need to get a license number from Grass Valley.

When you install the Aurora Payout application, the SabreTooth License Manager is installed as well.

To get a license number, follow these steps:

1. Click on the Aurora License Manager icon on the desktop. The SabreTooth License Manager opens.
2. Click **File** and select **Generate Unique ID**.
3. Email this unique ID to BVTN-Auroralicenses@thomson.net, and you will be provided with the SabreTooth license number.

Known issues

The following limitations are present in this Aurora Payout Software 6.1 release. If you wish to obtain more information about these limitations, please mention the reference numbers that follow the description of each limitation. These known issues will be resolved in the future.

- | | |
|-------------|---|
| Description | When multiple appended rundowns are loaded in Aurora Payout and the MOS Active property is turned off for one of the rundowns, NCS sync will be broken for the other open rundowns as well. (51615) |
| Workaround | To re-sync the active rundowns, close the inactive rundown and then click the Sync button. |
| Description | If Aurora Payout doesn't play all the way through your playlist when using the Archive Play feature, there may be a problem with the black clip that is used as filler between clips. (42885) |
| Workaround | Make sure that you have a clip called "BLACK" (all uppercase) in the same bin on the Media Server where you send stories for payout (normally the "default" bin). One way to create this clip is to insert 10 seconds of filler into an otherwise empty Aurora Edit sequence and send it to the payout bin. |
| Description | When working with iNEWS rundowns, the Rundown Bar window in Aurora Payout will always display "NOT READY" in the Status column. (34585) |
| Workaround | This column is designed to work with the "MOS Ready to air" property that is available with ENPS rundowns. Since this feature is not applicable with iNEWS rundowns, you may wish to resize the Status column to its minimum size when connected to an iNEWS system. |
| Description | When media is sent to a placeholder that is embedded in an iNEWS story, the Clip Duration column in the iNEWS client will not update. (44677) |
| Workaround | The duration will update if the media is first sent to the placeholder and then added to the iNEWS story. |
| Description | The connection between iNEWS rundowns is lost and then re-established (such as by rebooting the iNEWS server). (35882) |
| Workaround | Re-monitor your rundowns through iNEWS before they will be available in Aurora Payout's dropdown list. |
| Description | Trimming a clip in an Aurora Payout channel will not affect the duration that displays on a Newsroom Computer System, such as ENPS. (63446) |
| Workaround | None. |

- Description In ENPS client, the Actual column couldn't be updated with the Editorial Duration set for the Aurora Payout placeholder. (44269)
- Workaround In the ENPS client, the script window for a story must be closed before the Actual column will be updated with the Editorial Duration set for the Aurora Payout placeholder.
-
- Description When connected to a Newsroom Computer System, channel assignment or status changes that were made through the Aurora Payout interface will be reset if the item's rundown position is changed on the NCS. (35932)
- Workaround This is by design. If you wish to keep manual channel assignments when reordering items, you can assign channels through the NCS, rather than through Aurora Payout.
-
- Description Status translation table in mosconfig.xml on the iNEWS MOS Gateway system did not operate correctly with Aurora Payout. (69097)
- Workaround iNEWS users may need to make the following changes to the status translation table in mosconfig.xml on the iNEWS MOS Gateway system in order to make statuses operate correctly with Aurora Payout:
1. Change `<statusCued>CUED</statusCued>` to `<statusCued>STAND BY</statusCued>`.
 2. Change `<statusStopped>PLAYED</statusStopped>` to `<statusStopped>END</statusStopped>`.
-
- Description With iNEWS, misconfigured settings can cause stories to drop to the bottom of the playlist when they are newly inserted, or when their channel assignment is changed. (75836)
- Workaround This problem can occur when the mosconfig.xml on the iNEWS gateway has "handlesRoItemLevel" set to "YES". Ensure that the line in the mosconfig.xml is set as follows:
`<handlesRoItemLevelCommands>NO</handlesRoItemLevelCommands>`
-
- Description A K2 or M-Series payout system supports a maximum of only four channeless AMP connections at one time (this is separate from the channeled connections that are used for playback). (68152)
- Workaround So, for example, only one SDB Server connection and three Housekeeper connections to a K2 or M-Series can be configured at a time.
-
- Description Problems with updating the Ready status of clips. (68611)
- Workaround More than one Aurora Payout system should not be configured to connect to the same channel on a K2 or M-Series, as this can cause problems with updating the Ready status of clips.

Known issues

- Description When connected to an M-Series for playout, cueing a clip is slightly slower. (63922)
- Workaround This can be corrected by changing the following value in the Windows registry from 1 to 0: **HKEY_LOCAL_MACHINE\SOFTWARE\Grass Valley\Aurora Playout\Aurora Playout\Odetics\WaitCueCompletePreRoll**. Note that this value should not be changed to 0 on a connection to Profile or K2, only on a connection to M-Series iVDR.
- Description Housekeeper sometimes will not be able to see its bins after connected to a media server. (62349)
- Workaround Delete some bins or shorten bin names in the media server to ensure that the total number of characters for all bin names combined does not exceed 255 characters.
- Description Uninstalling Thomson Event Viewer does not remove its shortcut icon from desktop and Start Program Menu. Thus, Aurora 6.0 folder is still in the Start Program Menu after installation of Aurora 6.1 application. (77446)
- Workaround No workaround is available at this time. However, selecting Aurora Playout either from Aurora 6.0 or Aurora 6.1 in the Start Program Menu will open the same latest version of the application.