



Aurora Playout Version 6.3 Release Notes and Installation Instructions

These release notes contain updated information about the Aurora Playout system, including latest features and fixes.

Information in these release notes supersedes information in any of the other Aurora Playout documentation.

For additional information, see the **Aurora Playout User Guide**. The latest Grass Valley documentation can also be found online at:

<http://www.thomsongrassvalley.com/docs/>

Table of Contents

<i>Grass Valley Product Support</i>	2
<i>What's new in Aurora Playout 6.3</i>	4
<i>What's new by version</i>	4
<i>Fixes included in version 6.3</i>	6
<i>Software Version compatibility</i>	7
<i>Installing Aurora Playout</i>	8
<i>Using a Configuration File</i>	9
<i>Using a Batch File</i>	11
<i>Upgrade Instructions</i>	11
<i>Licensing Aurora Playout</i>	11
<i>Known issues</i>	12

Copyright ©2007 Grass Valley, Inc. All rights reserved. Printed in the United States of America. Portions of software ©2000 –2007, Microsoft Corporation. All rights reserved. This document may not be copied in whole or in part, or otherwise reproduced except as specifically permitted under U.S. copyright law, without the prior written consent of Grass Valley, Inc., P.O. Box 59900, Nevada City, California 95959-7900.

Grass Valley, K2, Aurora, Turbo, M-Series, Profile, Profile XP, NewsBrowse, NewsEdit, NewsQ, NewsShare, NewsQ Pro, and Media Manager are either registered trademarks or trademarks of Grass Valley, Inc. in the United States and/or other countries. Other trademarks used in this document are either registered trademarks or trademarks of the manufacturers or vendors of the associated products. QuickTime and the QuickTime logo are trademarks or registered trademarks of Apple Computer, Inc., used under license therefrom. Grass Valley, Inc. products are covered by U.S. and foreign patents, issued and pending. Additional information regarding Grass Valley, Inc.'s trademarks and other proprietary rights may be found at www.thomsongrassvalley.com.

Product options and specifications subject to change without notice. The information in this manual is furnished for informational use only, is subject to change without notice, and should not be construed as a commitment by Grass Valley, Inc. Grass Valley, Inc. assumes no responsibility or liability for any errors or inaccuracies that may appear in this publication.

Grass Valley Product Support

To get technical assistance, check on the status of a question, or to report new issue, contact Grass Valley Product Support via e-mail, the Web, or by phone or fax. Contact Grass Valley first regarding problems with third party software on Grass Valley products, such as the Microsoft® Windows® operating system, Windows Media® player, Internet Explorer® internet browser, SQL Server™ and QuickTime.

Web Technical Support

To access support information on the Web, visit the product support Web page on the Grass Valley Web site. You can download software or find solutions to problems by searching our Frequently Asked Questions (FAQ) database.

World Wide Web: <http://www.thomsongrassvalley.com/support/>

Technical Support E-mail Address: gvtechsupport@thomson.net.

Phone Support

Use the following information to contact product support by phone during business hours. Afterhours phone support is available for warranty and contract customers.

International (France)	+800 80 80 20 20 +33 1 48 25 20 20	Italy	+39 02 24 13 16 01 +39 06 87 20 35 42
International (United States, Canada)	+1 800 547 8949 +1 530 478 4148	Belarus, Russia, Tadzikistan, Ukraine, Uzbekistan	+7 095 258 09 20 +33 (0) 2 334 90 30
Hong Kong, Taiwan, Korea, Macau	+852 2531 3058	Indian Subcontinent	+91 11 515 282 502 +91 11 515 282 504
Australia, New Zealand	+61 1300 721 495	Germany, Austria, Eastern Europe	+49 6150 104 444
Central, South America	+55 11 5509 3440	Near East, Africa	+33 1 48 25 20 20
China	+861 066 0159 450	Netherlands	+31 (0) 35 62 38 421
Belgium	+32 (0) 2 334 90 30	Northern Europe	+45 45 96 88 70
Japan	+81 3 5484 6868	Singapore	+65 6379 1313
Malaysia	+603 7805 3884	Spain	+41 487 80 02
Middle East	+971 4 299 64 40	UK, Ireland, Israel	+44 118 923 0499



Authorized Support Representative

A local authorized support representative may be available in your country. To locate the support representative for your country, visit the product support Web page on the Grass Valley Web site.

What's new in Aurora Playout 6.3

Aurora Playout version 6.3 introduces several new features for the application and its components.

New in this release:

- **Temporary 30-day Demo License** - Aurora Playout provides a 30-day demo license for a smooth transition in your broadcast operation.
- **Support for Profile XP Media Platform** - Aurora Playout is qualified for use with Profile XP Media Platform, in addition to the existing support for K2 platform and M-Series iVDR.
- **Placeholder Quick Search** - You can get to a specific placeholder by entering first few characters from the name of the placeholder. This feature is supported in Clip Browser of the Aurora Playout application, Assignment List Manager, Assignment List Plug-in and Housekeeper.
- **Turn Off MOS Status Update** - An option to turn off MOS status update, in order to avoid status reporting conflicts to NCS from primary and backup systems. When you have both systems running, it is advisable to uncheck the box for Update MOS status on the backup system.
- **Increase of Channeless Connection Limit** - The increase applies to K2 version 3.2 only. With the new limit, up to eight channeless connections to a single K2 client (such as from the Housekeeper application) can run simultaneously.
- **GPI Output Trigger by End Blip** - GPI output can be triggered automatically by the channel End Blips. For chained clips, the GPI trigger applies only to the last clip in the chain.
- **Editorial Duration Priority** - Once the editorial duration is set for a placeholder, it will not be automatically changed to media duration as part of the send for playback.

To learn about features of past releases, refer to the following section [“What's new by version”](#).

What's new by version

Version 6.3 also includes all features and performance improvements introduced in past releases. The following describes those features:

Version 6.1

- **Support for 720p** - Aurora Playout supports high definition (HD) format for 720 lines of progressive scan or better known as 720p.

Version 6.0b

- **Support for M-Series iVDR** - Aurora Playout is qualified for use with M-Series iVDR, in addition to the existing support for K2 platform.

Version 6.0

- **Archive Play Deck Control** - Archive Play can be configured to remotely start and stop recording to a deck through RS-422 control.

- **Automatically Exit Archive Play** - When Archive Play finishes, the application automatically returns to normal playback mode.
- **Disable GPI Input in Archive Play** - An option has been added to disable GPI inputs while in Archive Play mode.
- **Ethernet Channel Control** - As an alternative to RS-422 control, playback channels can be configured to connect via Ethernet.
- **Rundown Calendar (ENPS only)** - When connected to ENPS, a rundown calendar allows filtering the rundown list by a specific date.
- **Run Time Counter** - For logging purposes, a Run Time counter can be started to record a Hit Time for each story. In Archive Play mode, this counter also displays the Total Run Time for the opened rundown(s).
- **Distinct Play/Stop GPI Triggers** - Play and Stop GPI commands can be assigned to separate triggers, rather than having a combined Play/Stop toggle.
- **Connection Status Lights** - Status indicator lights have been added to allow a quick visual verification that components are connected.
- **Prevent Pause after Play** - A configurable option allows you to prevent an accidental Stop command within a few seconds of hitting Play.
- **Flashing Sync Indicator** - The Sync button now flashes when sync has been broken between Playout and the Newsroom Computer System.
- **Configuration Summary Pages** - For GPI, Channel, and Function Key configuration, a Summary page allows you to see all settings in one table.
- **Improved Buddy Server Support** - When connected to an ENPS buddy server, the application will automatically switch back to the primary ENPS server when it becomes available.
- **16:9 Thumbnails** - An option allows the use of either 4:3 or 16:9 aspect ratio for thumbnails.
- **Automatic Server Reconnect** - After a media server is temporarily offline (such as during a reboot), SDB Server and Housekeeper will reconnect to it once it's available, without user intervention.
- **Housekeeper Direct Delete** - In Housekeeper, you can optionally delete clips and placeholders directly, bypassing the Recycle Bin.
- **Assignment List Rundown View** - In the Assignment List Plug-in, a tree view allows the sorting of items by rundown.
- **Break Indicator** - A special "Break" placeholder can be inserted into a rundown so that breaks are visible in the Playout playlist.
- **Channel-specific X-keys** - When using the X-keys Jog/Shuttle controller, the ability to assign channel-specific commands has been added.

Fixes included in version 6.3

- (76577) - Launching Housekeeper could break Playout channel connections to Profile.
- (76457) - Attempting Housekeeper clip import with long clip names caused AmpTcpService to crash on Profile.
- (82363) - SDB Server could occasionally freeze, causing the Housekeeper and Assignment List Plug-in applications to stop responding.
- (77916) - With mirrored Profile channels, cueing clips could be very slow.
- (81385) - Closing a loaded rundown in Aurora Playout could result in wrong MOS status display on NCS client.
- (62349) - When a media server contained a large number of bins, Housekeeper would not display the media server's bins on its Clip Import tab.
- (68836) - Server dropdown list in the Housekeeper application was not refreshed after a media server comes online or reconnects.
- (64841) - Occasionally seeing channels momentarily disconnect on Profile or M-Series.
- (76518) - Housekeeper clip import while connected to a Profile could get stuck at 50% transfer progress.
- (83108) - Assignment List Plug-in sometimes opened with blank columns.
- (83765) - Aurora Edit wink of sequence longer than 30 seconds caused SDB Server to disconnect from K2.
- (74475) - When cueing a clip while it's being transferred to Profile, channel window sometimes did not show the total duration of the clip.
- (79108) - Clip Browser category dropdown behaved defectively at 1024x768 resolution.
- (79109) - Extra gray area appeared at the right side of Rundown window after docking Clip Browser window.
- (80659) - Trimming of a clip with non-English characters did not work.
- (81222) - Channel recue could cause the same clip to be loaded into 2 different channels.

Software Version compatibility

Aurora Playout 6.3 was qualified using the following software versions:

- K2 system 3.2.21.766
- M-Series iVDR 2.0.13.567
- Profile XP System 5.4.9.1288
- Aurora Edit 6.3
- Aurora Ingest 6.3
- ENPS 5.00.0088
- iNEWS Client 2.6.2.16 with iNEWS Server 2.6.2.4 and MOS Gateway 2.6.3.1
- Octopus 5.2.0.6871
- Microsoft Windows XP, Service Pack 2

Installing Aurora Playout

The various Aurora Playout components reside on multiple computers. The following table indicates where each component is typically installed:

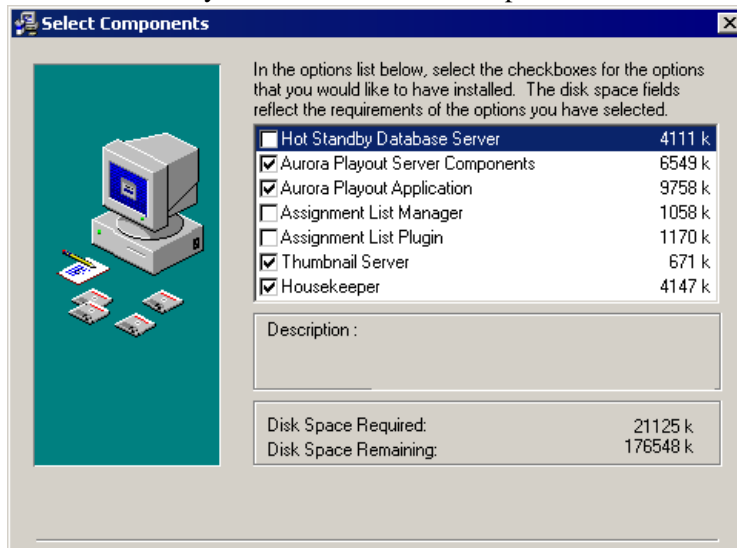
Component	Machine where you install it...
Aurora Playout application	Aurora Playout computer <i>NOTE: It is recommended that Aurora Playout is run at a display resolution of 1280 x 1024.</i>
Thumbnail Server	Separate PC for the Server Components. <i>NOTE: You do not need to install Thumbnail Server if you are using M-Series iVDR or K2 as your Media Server.</i>
Aurora Playout Server Components: XMOS Server SDB Server	Recommend installing on a separate computer, but may be installed on Aurora Playout computer. <i>NOTE: When the XMOS Server application is running on a Windows XP system, it is recommended that the "Windows Firewall" feature be turned off, as it can adversely affect the speed of MOS communication with the newsroom computer system.</i>
Housekeeper	Aurora Playout computer or another PC on the same network.
Assignment List Manager (standalone version)	Non-NCS computers, usually used by Newsroom Producers.
Assignment List Plug-in	All NCS client computers. See Aurora Playout User Guide for installation instructions.
Hot Standby Database Server	Optional; install on a PC on the same network as the Aurora Playout computer.

Because you must configure some components with the locations of other components, you should plan your overall installation before you begin.

To install the Aurora Playout application and its components:

1. Insert the Aurora Playout CD into the CD-ROM drive.
2. Navigate to the CD and double-click **SetupAuroraPlayout.exe**.

- Click **Next** until you reach the Select Components screen.



- At the Select Components screen, check the boxes for the component(s) that you want to install.
- Click **Next** to start the installation.
- Click **Finish** at the Installation Complete screen.
- Configure each component by following instructions in the Aurora Payout User Guide.

Using a Configuration File

If you want to install the Assignment List Plug-in on multiple computers with the same configuration, you can create a network installer:

- Copy the Aurora Payout software installation file, **SetupAuroraPayout.exe**, from the CD onto your network.
- Using a text editor such as Notepad, create a file called **setup.ini** similar to this example:

```
[AssignmentListPlugin]
DatabaseServer=SERVER1
BackupDatabaseServer=SERVER2
MosID=thom.wxyz.mos
ThumbnailPath=\\PLAYOUT1\thumbnails
VideoStandard=1
XMOSServer=SERVER1
RundownView=1
UnicodeDragDrop=1
```

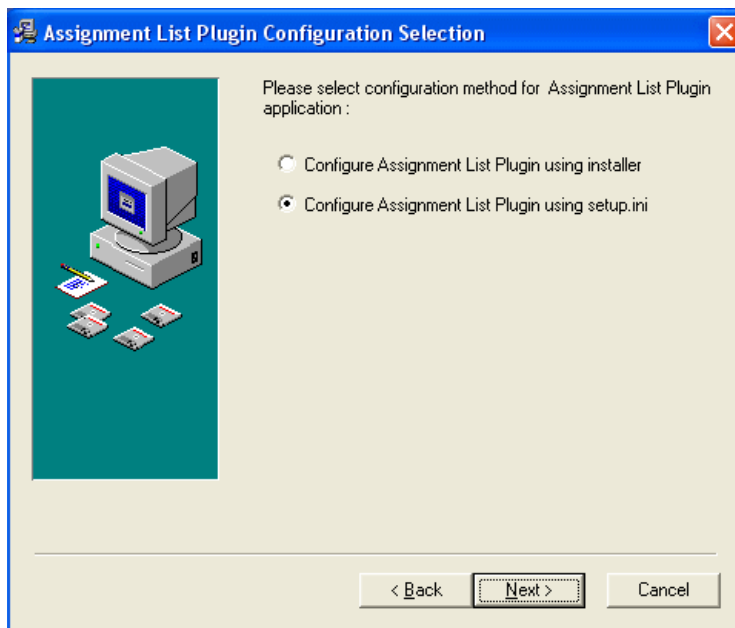
Name	Description
DatabaseServer	The name of the server hosting the Aurora Payout database (primary SDB Server).

Name	Description
BackupDatabaseServer	The name of the server hosting the hot standby Aurora Playout database (backup SDB Server).
MOSID	Your MOS ID.
Thumbnail Path	The full path to the shared thumbnail directory on the computer where thumbnails are stored, in the format \\server\foldername ; e.g., if you have a shared folder named “thumbnails” on your playout system named “Playout1”, the path would be \\Playout1\thumbnails . This path needs to match the path set in Aurora Edit— Tools Options Aurora Playout Thumbnails Path .
VideoStandard	Your video standard: 0 for PAL, 1 for NTSC - Drop Frame, or 2 for NTSC - Non-drop Frame.
XMOS Server	The name of the computer hosting the XMOS Server.
Rundown View	Determines whether to show the list of rundowns in the left pane of the Assignment List Plug-in: 0 for off, 1 for on.
UnicodeDragDrop	Your Newsroom Computer System: 0 for iNEWS or 1 for ENPS/Octopus.

3. Save the file in the directory with the **SetupAuroraPlayout.exe** file.

From each computer on which you are installing the plug-in:

1. Navigate to the network directory where you saved the installer and configuration file and double-click **SetupAuroraPlayout.exe**.
2. Click **Next** until you reach the Select Components screen.
3. At the Select Components screen, check the **Assignment List Plugin** checkbox and click **Next**.
4. Select **Configure Assignment List Plugin using setup.ini** and click **Next**.



5. Click **Finish** to complete the installation.

The installer uses the setup.ini file to configure the Assignment List Plug-in.

Using a Batch File

You can also create a batch file to automatically install the Assignment List Plug-in using the setup.ini file.

To create the batch file:

1. Create a text file named **setupALP.bat**.

2. In the file, put this text:

```
setupauroraplayout.exe /ALP
```

3. Save the file into the same directory as the Aurora Payout installer and your setup.ini file.

From each computer on which you are installing the plug-in:

- Double-click **setupALP.bat**.

The batch file runs and installs the plug-in.

Upgrade Instructions

When upgrading from one version of Aurora Payout to another, you should close the current Aurora Payout application.

It is not mandatory, but it is advisable that you uninstall Aurora Payout's components before installing the new version. Reboot your machine after the installation is complete.

Licensing Aurora Payout

Once you have installed Aurora Payout, you are provided with a 30-day demo license. You need to get a license number from Grass Valley in order to install the permanent license. Obtaining the software license number is important because you cannot launch channels or configure Aurora Payout after your 30-day demo license has expired.

When you install the Aurora Payout application, the SabreTooth License Manager is installed as well.

To get a license number, follow these steps:

1. Click on the Aurora License Manager icon on the desktop. The SabreTooth License Manager opens.
2. Click **File** and select **Generate Unique ID**.
3. Email this unique ID to BVTN-Auroralicenses@thomson.net, and you will be provided with the SabreTooth license number.

Known issues

The following limitations are present in this Aurora Payout Software 6.3 release. If you wish to obtain more information about these limitations, please mention the reference numbers that follow the description of each limitation. These known issues will be resolved in the future.

- | | |
|-------------|---|
| Description | When multiple appended rundowns are loaded in Aurora Payout and the MOS Active property is turned off for one of the rundowns, NCS sync will be broken for the other open rundowns as well. (51615) |
| Workaround | To re-sync the active rundowns, close the inactive rundown and then click the Sync button. |
| Description | If Aurora Payout doesn't play all the way through your playlist when using the Archive Play feature, there may be a problem with the black clip that is used as filler between clips. (42885) |
| Workaround | Make sure that you have a clip called "BLACK" (all uppercase) in the same bin on the Media Server where you send stories for payout (normally the "default" bin). One way to create this clip is to insert 10 seconds of filler into an otherwise empty Aurora Edit sequence and send it to the payout bin. |
| Description | When working with iNEWS rundowns, the Rundown Bar window in Aurora Payout will always display "NOT READY" in the Status column. (34585) |
| Workaround | This column is designed to work with the "MOS Ready to air" property that is available with ENPS rundowns. Since this feature is not applicable with iNEWS rundowns, you may wish to resize the Status column to its minimum size when connected to an iNEWS system. |
| Description | When media is sent to a placeholder that is embedded in an iNEWS story, the Clip Duration column in the iNEWS client will not update. (44677) |
| Workaround | The duration will update if the media is first sent to the placeholder and then added to the iNEWS story. |
| Description | The connection between iNEWS rundowns is lost and then re-established (such as by rebooting the iNEWS server). (35882) |
| Workaround | Re-monitor your rundowns through iNEWS before they will be available in Aurora Payout's dropdown list. |
| Description | Trimming a clip in an Aurora Payout channel will not affect the duration that displays on a Newsroom Computer System, such as ENPS. (63446) |
| Workaround | None. |

- Description In ENPS client, the Actual column couldn't be updated with the Editorial Duration set for the Aurora Playout placeholder. (44269)
- Workaround In the ENPS client, the script window for a story must be closed before the Actual column will be updated with the Editorial Duration set for the Aurora Playout placeholder.
- Description When connected to a Newsroom Computer System, channel assignment or status changes that were made through the Aurora Playout interface will be reset if the item's rundown position is changed on the NCS. (35932)
- Workaround This is by design. If you wish to keep manual channel assignments when reordering items, you can assign channels through the NCS, rather than through Aurora Playout.
- Description Status translation table in mosconfig.xml on the iNEWS MOS Gateway system did not operate correctly with Aurora Playout. (69097)
- Workaround iNEWS users may need to make the following changes to the status translation table in mosconfig.xml on the iNEWS MOS Gateway system in order to make statuses operate correctly with Aurora Playout:
1. Change `<statusCued>CUED</statusCued>` to `<statusCued>STAND BY</statusCued>`.
 2. Change `<statusStopped>PLAYED</statusStopped>` to `<statusStopped>END</statusStopped>`.
- Description Differences in MOS status reporting could lead to Octopus not operating correctly with Aurora Playout. (49674)
- Workaround Octopus users need to make these following changes to the Statuses tab within **Admin | MOS | Devices** of the Octopus application:
1. Change **CUED** status to **STAND BY**.
 2. Change **PLAYED** status to **END**.
- Description With iNEWS, misconfigured settings can cause stories to drop to the bottom of the playlist when they are newly inserted, or when their channel assignment is changed. (75836)
- Workaround This problem can occur when the mosconfig.xml on the iNEWS gateway has "handlesRoItemLevel" set to "YES". Ensure that the line in the mosconfig.xml is set as follows:
`<handlesRoItemLevelCommands>NO</handlesRoItemLevelCommands>`
- Description A K2 version 3.1, M-Series or Profile playout system supports a maximum of only four channeless AMP connections at one time (this is separate from the channeled connections that are used for playback). (68152)
- Workaround So, for example, only one SDB Server connection and three Housekeeper connections to a K2 or M-Series can be configured at a time.

Known issues

- Description Problems with updating the Ready status of clips. (68611)
- Workaround More than one Aurora Playout system should not be configured to connect to the same channel on a K2, M-Series or Profile, as this can cause problems with updating the Ready status of clips.
-
- Description When connected to an M-Series for playout, cueing a clip is slightly slower. (63922)
- Workaround This can be corrected by changing the following value in the Windows registry from 1 to 0: **HKEY_LOCAL_MACHINE\SOFTWARE\Grass Valley\Aurora Playout\Aurora Playout\Odetics\WaitCueCompletePreRoll**. Note that this value should not be changed to 0 on a connection to Profile or K2, only on a connection to M-Series iVDR.
-
- Description Uninstalling Thomson Event Viewer does not remove its shortcut icon from desktop and Start Program Menu. Thus, Aurora 6.1 folder is still in the Start Program Menu after installation of Aurora 6.3 application. (77446)
- Workaround No workaround is available at this time. However, selecting Aurora Playout either from Aurora 6.1 or Aurora 6.3 in the Start Program Menu will open the same latest version of the application.
-
- Description In Assignment List Plug-in, attempting to drag a clip will bring up the clip properties dialog box. (80524)
- Workaround By default, Assignment List Plug-in is disabled as a drag and drop target. To enable it, add "EnableDropTarget" to the following Windows registry; **HKEY_LOCAL_MACHINE\SOFTWARE\Grass Valley\Aurora Playout\Assignment List Plugin** and set the value to 1.