



Prelude/Acappella

COMPACT ROUTER CONTROL SYSTEM

Release Notes
Software Version 3.3.0

KEMA Quality

CERTIFICATE

Certificate Number: 510040.001

The Quality System of:

Grass Valley USA, LLC and its Grass Valley Affiliates

Headquarters:

**400 Providence Mine Road
Nevada City, CA 95945
United States**

**15655 SW Greystone Ct.
Beaverton, OR 97006
United States**

**Brunnenweg 9
D-64331 Weiterstadt
Germany**

**Kapittelweg 10
4827 HG Breda
The Netherlands**

**2300 So. Decker Lake Blvd.
Salt Lake City, UT 84119
United States**

Including its implementation, meets the requirements of the standard:

ISO 9001:2008

Scope:

The design, manufacture and support of video and audio hardware and software products and related systems.

This Certificate is valid until: June 14, 2012
This Certificate is valid as of: December 23, 2010
Certified for the first time: June 14, 2000



H. Pierre Sallé
President
KEMA-Registered Quality

The method of operation for quality certification is defined in the KEMA General Terms And Conditions For Quality And Environmental Management Systems Certifications. Integral publication of this certificate is allowed.

KEMA-Registered Quality, Inc.
4377 County Line Road
Chalfont, PA 18914
Ph: (215)997-4519
Fax: (215)997-3809
CRT 001 042108

Accredited By:
ANAB



a  **DEKRA** company



Prelude/Acappella

COMPACT ROUTER CONTROL SYSTEM

Release Notes
Software Version 3.3.0

Contacting Grass Valley

International Support Centers	France 24 x 7	+800 8080 2020 or +33 1 48 25 20 20	United States/Canada 24 x 7	+1 800 547 8949 or +1 530 478 4148
Local Support Centers (available during normal business hours)	Asia	Hong Kong, Taiwan, Korea, Macau: +852 2531 3058 Indian Subcontinent: +91 22 24933476 Southeast Asia/Malaysia: +603 7805 3884 Southeast Asia/Singapore: +65 6379 1313 China: +861 0660 159 450 Japan: +81 3 5484 6868		
		Australia and New Zealand: +61 1300 721 495	Central/South America: +55 11 5509 3443	
		Middle East: +971 4 299 64 40 Near East and Africa: +800 8080 2020 or +33 1 48 25 20 20		
	Europe	Belarus, Russia, Tadzikistan, Ukraine, Uzbekistan: +7 095 2580924 225 Switzerland: +41 1 487 80 02 S. Europe/Italy-Roma: +39 06 87 20 35 28 -Milan: +39 02 48 41 46 58 S. Europe/Spain: +34 91 512 03 50 Benelux/Belgium: +32 (0) 2 334 90 30 Benelux/Netherlands: +31 (0) 35 62 38 42 1 N. Europe: +45 45 96 88 70 Germany, Austria, Eastern Europe: +49 6150 104 444 UK, Ireland, Israel: +44 118 923 0499		

Copyright © Grass Valley USA, LLC. All rights reserved.

This product may be covered by one or more U.S. and foreign patents.

Grass Valley Web Site

The www.grassvalley.com web site offers the following:

Online User Documentation — Current versions of product catalogs, brochures, data sheets, ordering guides, planning guides, manuals, and release notes in .pdf format can be downloaded.

FAQ Database — Solutions to problems and troubleshooting efforts can be found by searching our Frequently Asked Questions (FAQ) database.

Software Downloads — Download software updates, drivers, and patches.



END-OF-LIFE PRODUCT RECYCLING NOTICE

Grass Valley's innovation and excellence in product design also extends to the programs we've established to manage the recycling of our products. Grass Valley has developed a comprehensive end-of-life product take back program for recycle or disposal of end-of-life products. Our program meets the requirements of the European Union's WEEE Directive, the United States Environmental Protection Agency, and U.S. state and local agencies.

Grass Valley's end-of-life product take back program assures proper disposal by use of Best Available Technology. This program accepts any Grass Valley branded equipment. Upon request, a Certificate of Recycling or a Certificate of Destruction, depending on the ultimate disposition of the product, can be sent to the requester.

Grass Valley will be responsible for all costs associated with recycling and disposal, including freight. However, you are responsible for the removal of the equipment from your facility and packing the equipment to make it ready for pickup.



For further information on the Grass Valley product take back system please contact Grass Valley at + 800 80 80 20 20 or +33 1 48 25 20 20 from most other countries. In the U.S. and Canada please call 800-547-8949, and ask to be connected to the EH&S Department. Additional information concerning the program can be found at: www.grassvalley.com/about/environmental-policy

001187401

Contents

- Prelude/Acappella Release Notes** 7
 - Introduction 7
 - New Features in CRCS Release 3.3.0 7
 - Firmware Update Procedure..... 8
 - Firmware Versions 8
 - Frame Store Firmware Update Procedure..... 8

Prelude/Acappella Release Notes

Introduction

This document describes product enhancements provided by the Compact Router Control System (CRCS) software release 3.3.0 that primarily affect Prelude control systems and Acappella matrixes and panels. This document also explains how to update Acappella matrix frame sync firmware.

New Features in CRCS Release 3.3.0

- The Prelude NP Matrix driver now supports controlling more than two levels of a remote system.
- Prelude now supports drag-and-drop configuration for Kayenne Switchers. The default Kayenne matrix configuration is four 256 x 96 Levels (KAYNVid1, KAYNKey1, KAYNVid2, KAYNKey2). This configuration can be changed manually with the Prelude UI.
- Prelude NP Matrix (By Index) now passes protects to remote matrices.
- Latency in status updates has been reduced by implementing an NP Matrix subscription mechanism.
- The Matrix # field has been implemented in the Physical Matrix configuration for NP matrix.
- NP commands have been added to get database of indices only.
- A Win32 version of Prelude panel code has been created to support the Soft Panels feature set.
- A new gray background appearance has been applied to Acappella frame web pages.

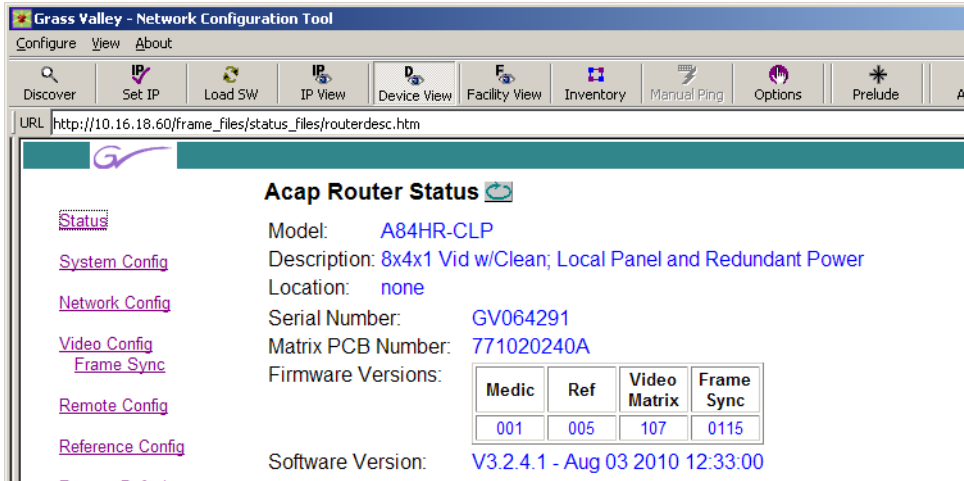
- A new version of Acappella A84HR-CPL frame sync firmware is available that modifies embedded audio in SD video to permit it to pass through some specific downstream equipment (for example, Sony DVW-500P VTR or Miranda KX multi-viewer). If you are not experiencing this issue with downstream equipment you do not need to update the Acappella firmware. Acappella firmware is updated independently from the Acappella matrix software, and requires additional installation steps. See [Firmware Update Procedure](#).

Firmware Update Procedure

Firmware Versions

The currently installed versions of Acappella software and firmware are reported on the Status web page ([Figure 1](#)). The earlier firmware version that may create downstream audio issues is Frame Store **0.1.15**. The replacement firmware version that can prevent this issue is Frame Store **0.2.1**.

Figure 1. Acappella Status Web Page, v3.2.4 Web Page with Older Version Firmware



The screenshot shows the 'Acappella Status' web page. The browser title is 'Grass Valley - Network Configuration Tool'. The URL is 'http://10.16.18.60/frame_files/status_files/routerdesc.htm'. The page displays the following information:

- Model:** A84HR-CLP
- Description:** 8x4x1 Vid w/Clean; Local Panel and Redundant Power
- Location:** none
- Serial Number:** GV064291
- Matrix PCB Number:** 771020240A
- Firmware Versions:**

Medic	Ref	Video Matrix	Frame Sync
001	005	107	0115
- Software Version:** V3.2.4.1 - Aug 03 2010 12:33:00

Navigation links on the left include: Status, System Config, Network Config, Video Config, Frame Sync, Remote Config, and Reference Config.

Frame Store Firmware Update Procedure

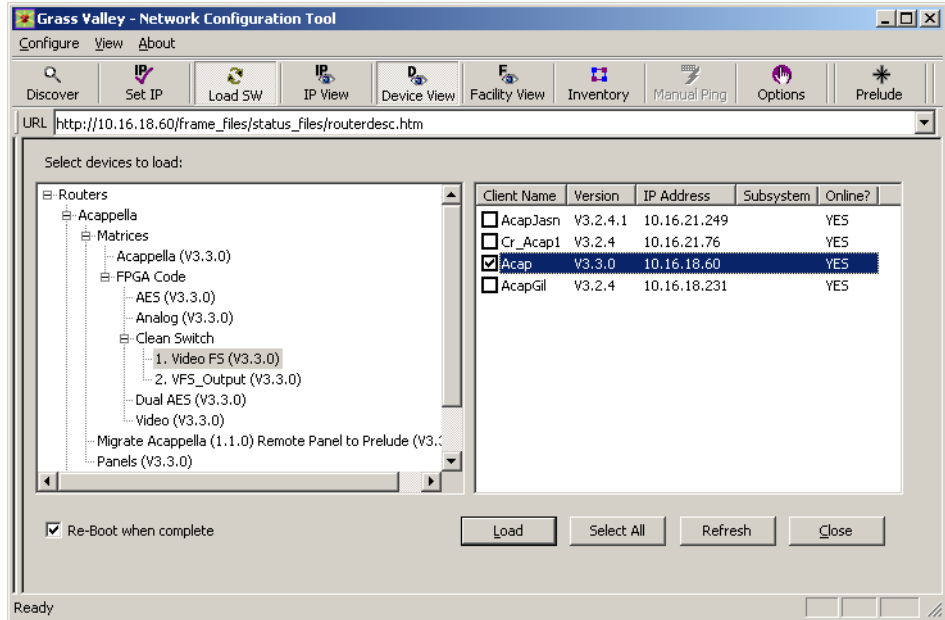
Acappella matrix software is updated in the usual manner, and then using additional steps Acappella firmware can be updated. Follow the usual Acappella matrix software update procedure, as described in the *Acappella Instruction Manual* or *NetConfig Instruction Manual*.

If you wish to also update the frame sync firmware, then do the following:

1. Ensure the **Re-Boot when complete** box is checked.

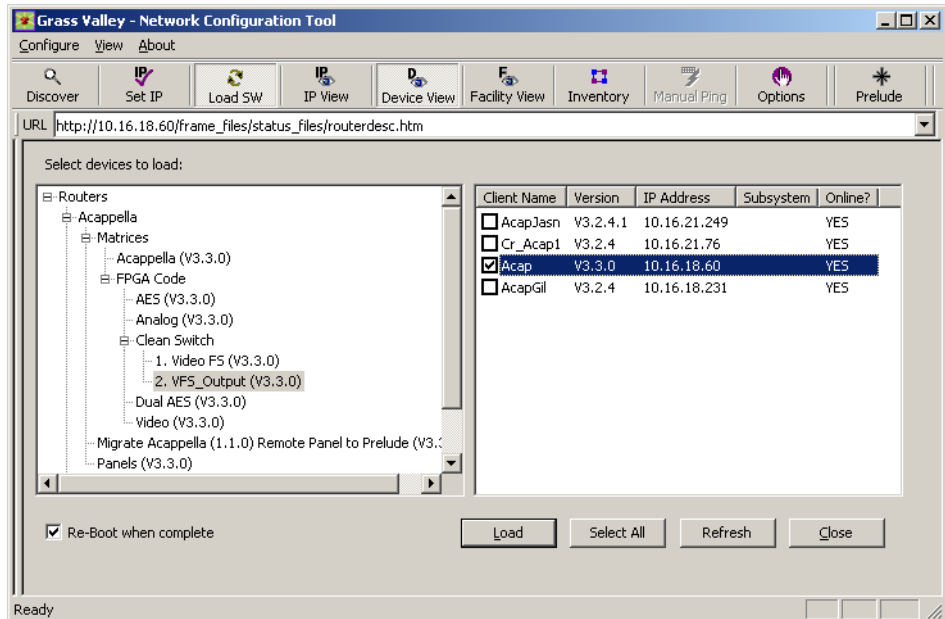
- Navigate to the FPGA Code / Clean Switch directory, select the **Video FS** firmware version, select the target Acappella frame store matrix, and click **Load** (Figure 2).

Figure 2. Software Update Screen



- Allow the device to reboot, then navigate to the FPGA Code / Clean Switch directory, select the **VFS_Output** firmware version, select the target Acappella frame store matrix and click **Load** (Figure 3).

Figure 3. Firmware Update Screen



4. After the Acappella firmware has been updated, and after the NetConfig screen has been refreshed, the new firmware version will be reported on the Status web page (Figure 4).

Figure 4. Acappella Status Web Page, v3.3.0 Web Page with Newer Firmware Versions

