

Jupiter

CONTROL SYSTEM

Release Notes

SOFTWARE VERSION 7.7.0

071827509
MARCH 2009



Affiliate with the N.V. KEMA in The Netherlands

CERTIFICATE

Certificate Number: 510040.001

The Quality System of:

Grass Valley, Inc.

400 Providence Mine Road
Nevada City, CA 95945
United States

15655 SW Greystone Ct.
Beaverton, OR 97006
United States

10 Presidential Way
3rd Floor, Suite 300
Woburn, MA 01801
United States

Nederland B.V.
4800 RP BREDA
The Netherlands

Weierstadt, Germany
Brunnenweg 9
D-64331 Weiterstadt
Germany

Rennes, France
Rue du Clos Courtel
Cesson-Sevigne, Cedex
France

Technopole Brest Iroise
CS 73808
29238 Brest Cedex 3
France

17 rue du Petit Albi-BP 8244
95801 Cergy Pontoise
Cergy, France

2300 South Decker Lake Blvd.
Salt Lake City, UT 84119
United States

7140 Baymeadows Way
Suite 101
Jacksonville, FL 32256
United States

Including its implementation, meets the requirements of the standard:

ISO 9001:2000

Scope:

The design, manufacture and support of video hardware and software products and related systems.

This Certificate is valid until: June 14, 2009
This Certificate is valid as of: August 30, 2006
Certified for the first time: June 14, 2000

H. Pierre Sallé
President
KEMA-Registered Quality

The method of operation for quality certification is defined in the KEMA General Terms And Conditions For Quality And Environmental Management Systems Certifications. Integral publication of this certificate is allowed.

KEMA-Registered Quality, Inc.
4377 County Line Road
Chalfont, PA 18914
Ph: (215)997-4519
Fax: (215)997-3809
CRT 001 073004

Accredited By:
ANAB



Jupiter

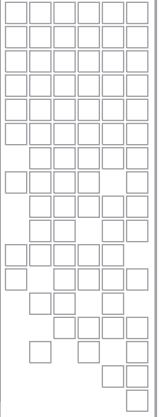
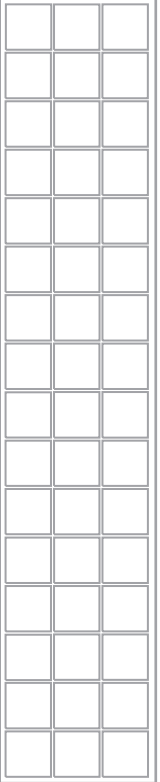
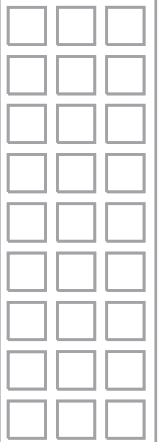
CONTROL SYSTEM

Release Notes



SOFTWARE VERSION 7.7.0

071827509
MARCH 2009



Contacting Grass Valley

International Support Centers	France 24 x 7	+800 8080 2020 or +33 1 48 25 20 20 +800 8080 2020 or +33 1 48 25 20 20	United States/Canada 24 x 7	+1 800 547 8949 or +1 530 478 4148
Local Support Centers (available during normal business hours)	Asia	Hong Kong, Taiwan, Korea, Macau: +852 2531 3058 Indian Subcontinent: +91 22 24933476 Southeast Asia/Malaysia: +603 7805 3884 Southeast Asia/Singapore: +65 6379 1313 China: +861 0660 159 450 Japan: +81 3 5484 6868		
		Australia and New Zealand: +61 1300 721 495	Central/South America: +55 11 5509 3443	
		Middle East: +971 4 299 64 40 Near East and Africa: +800 8080 2020 or +33 1 48 25 20 20		
	Europe	Belarus, Russia, Tadzikistan, Ukraine, Uzbekistan: +7 095 2580924 225 Switzerland: +41 1 487 80 02 S. Europe/Italy-Roma: +39 06 87 20 35 28 -Milan: +39 02 48 41 46 58 S. Europe/Spain: +34 91 512 03 50 Benelux/Belgium: +32 (0) 2 334 90 30 Benelux/Netherlands: +31 (0) 35 62 38 42 1 N. Europe: +45 45 96 88 70 Germany, Austria, Eastern Europe: +49 6150 104 444 UK, Ireland, Israel: +44 118 923 0499		

Copyright © Thomson, Inc. All rights reserved.
This product may be covered by one or more U.S. and foreign patents.

Grass Valley Web Site

The www.thomsongrassvalley.com web site offers the following:

Online User Documentation — Current versions of product catalogs, brochures, data sheets, ordering guides, planning guides, manuals, and release notes in .pdf format can be downloaded.

FAQ Database — Solutions to problems and troubleshooting efforts can be found by searching our Frequently Asked Questions (FAQ) database.

Software Downloads — Download software updates, drivers, and patches.



END-OF-LIFE PRODUCT RECYCLING NOTICE

Grass Valley's innovation and excellence in product design also extends to the programs we've established to manage the recycling of our products. Grass Valley has developed a comprehensive end-of-life product take back program for recycle or disposal of end-of-life products. Our program meets the requirements of the European Union's WEEE Directive, the United States Environmental Protection Agency, and U.S. state and local agencies.

Grass Valley's end-of-life product take back program assures proper disposal by use of Best Available Technology. This program accepts any Grass Valley branded equipment. Upon request, a Certificate of Recycling or a Certificate of Destruction, depending on the ultimate disposition of the product, can be sent to the requester.

Grass Valley will be responsible for all costs associated with recycling and disposal, including freight. However, you are responsible for the removal of the equipment from your facility and packing the equipment to make it ready for pickup.



For further information on the Grass Valley product take back system please contact Grass Valley at + 800 80 80 20 20 or +33 1 48 25 20 20 from most other countries. In the U.S. and Canada please call 800-547-8949 or 530-478-4148, and ask to be connected to the EH&S Department. Additional information concerning the program can be found at: www.thomsongrassvalley.com/environment



Contents

- Jupiter Release Notes** 7
 - Introduction 7
 - New Features in Jupiter Release 7.7.0 AccuSwitch 7
 - Categories Increased to 98 8
 - Introduction 8
 - Category Sets 8
 - Category Selection and Error 10
 - Event Sequences Increased to 100 11
 - Introduction 11
 - “Zero-Downtime” Support 12
 - Jupiter L, S, and LCD Panel Support 13
 - Introduction 13
 - Soft Panel Support 13
 - Introduction 13
 - Visual Status Display Support 13
 - Introduction 13
 - Upgrade Procedure 14
 - Caveats 14
 - Equipment Required 14
 - Software required 14
 - Materials supplied 15
 - Optional materials 15
 - Software Update 16
 - Introduction 16
 - Update Only Existing Jupiter Systems 16
 - Installing the Jupiter Software Components 17
 - Updating a Previous Installation 17
 - Removing the Previous Version 17
 - Installing the Latest Version 19

Jupiter Release Notes

Introduction

This document describes product enhancements provided by the 7.7 version of the Jupiter Control System. It also describes the installation procedure used to upgrade a Jupiter system from version 7.6.1 to 7.7.0 (See the [Upgrade Procedure](#) section).

Note This release supports English versions of Windows XP Professional operating systems only.

New Features in Jupiter Release 7.7.0 AccuSwitch

- Support for up to 98 Categories.
- Support for up to 100 Event sequences.
- Support for configuration changes with “zero-downtime.”
- Support for L, S, and LCD Panels.
- Support for Soft Panels.
- Support for Visual Status Display.

Categories Increased to 98

Introduction

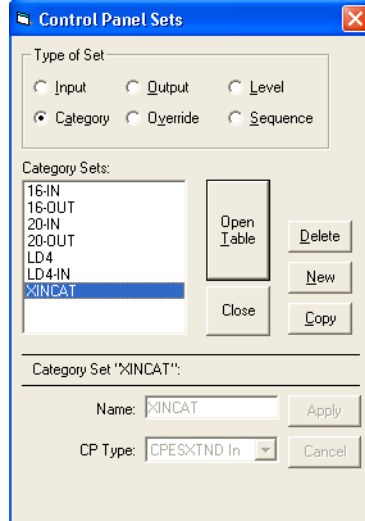
This new feature is an increase in the number of Categories from 20 to 98. This increase will help customers with large routing infrastructures to better meet their business requirements by making their router system more customizable and flexible. Customers now have more options for detailed sorting of sources and destinations, as well as grouping source or destination devices into prioritized categories. Users are not required to use all of the possible categories only the number of categories that they need. This enhancement is used exclusively with AccuSwitch software and on the new L, S, LCD, Basic XY, and Multi-Level XY panels.

Category Sets

The following examples show the new Category Sets that can be configured using the Control Panel Sets dialog (see [Figure 1](#), [Figure 2](#), [Figure 3](#), and [Figure 4](#)). For more information on configuring Category Sets, see the Jupiter CM-4000 Installation and Operating Manual (071-8261-04).

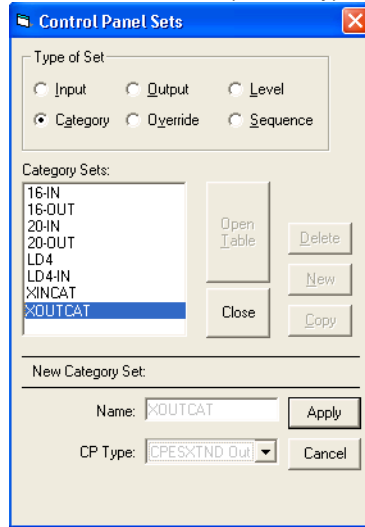
CPESXTND CP Type

Figure 1. "CPESXTND" Category Type



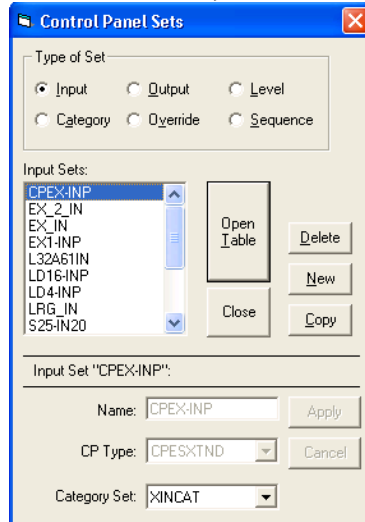
CPESXTND Output CP Type

Figure 2. CPESXTND Output CP Type



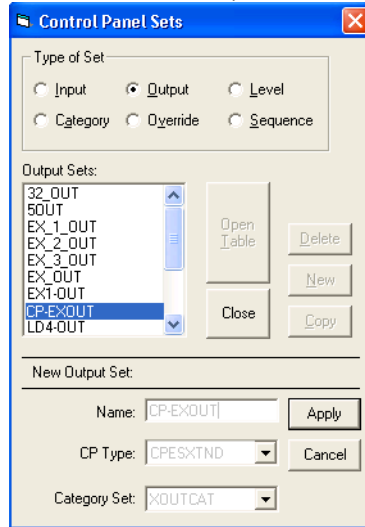
CPESXTND Input Set

Figure 3. CPESXTND Input Set



CPESXTND Output Set

Figure 4. CPESXTND Output Set



Category Selection and Error

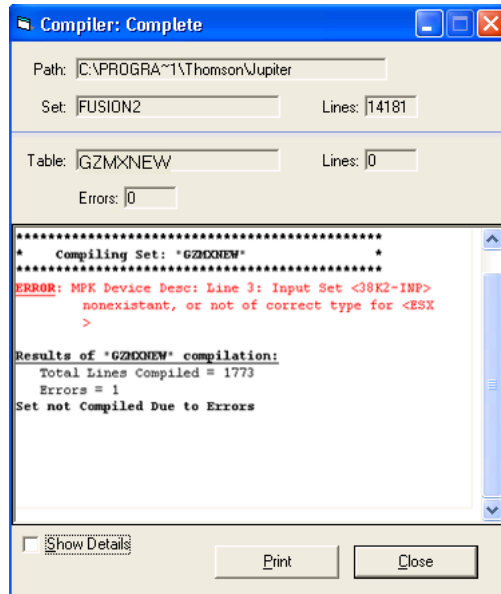
A Device Type can be selected in the MPK Devices Table by selecting the Device Type field and then selecting the desired option from the drop-down list. The following example (Figure 5) shows the new Device type, “CPESXTND” being selected.

Figure 5. “CPESXTND” Selection

11	SXY-A10	CPESXTND	<input type="checkbox"/>	cmA	10	EX1-INP
12	SXY-A11	CPESXTND	<input type="checkbox"/>	cmA	11	EX1-INP
13	SXY-A12	Diamond	<input type="checkbox"/>	cmA	12	EX1-INP
14	SXY-A13	ES-LAN	<input type="checkbox"/>	cmA	13	SXY1-INP
15	SXY-A14	ES-RMTR	<input type="checkbox"/>	cmA	14	SXY1-INP
16	SXY-A15	ES-TRIB	<input type="checkbox"/>	cmA	15	SXY1-INP
17	S50-A16	FCS-3277	<input type="checkbox"/>	cmA	16	LRG_IN
18	SXY-A17	FCS-3296	<input type="checkbox"/>	cmA	17	SXY1-INP
19	SXY-A18	FCS-3360	<input type="checkbox"/>	cmA	18	SXY1-INP
20	SXY-A19	FCS-3363	<input type="checkbox"/>	cmA	19	LD4-INP
21	SXY-A20	GVG-200	<input type="checkbox"/>	cmA	20	SXY1-INP
22	SXY-A21	JNS-UMD	<input type="checkbox"/>	cmA	21	SXY1-INP
23	SXY-A22	MANAGER	<input type="checkbox"/>	cmA	22	SXY1-INP
23	SXY-A22	MC-3000	<input type="checkbox"/>	cmA	22	SXY1-INP

CPESXTND device types use control panel input and output sets of type “CPESXTND.” Control panel set types of CP3800 are used for level, override, and sequence. The Validation check in the Configuration editor will alert you to the problem when the wrong type is used. The compiler will also identify the problem as shown in (Figure 6).

Figure 6. Compiler Error: Incorrect Type



Event Sequences Increased to 100

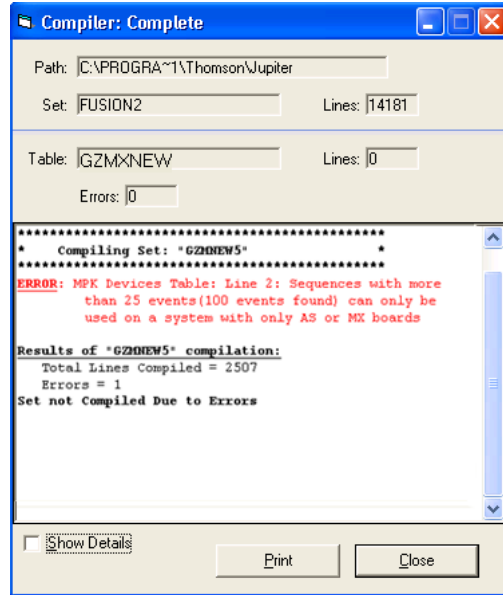
Introduction

This new feature is an increase in the number of Event sequences (or Salvos) from 25 to 100. This increase will allow you to control more switches per button press, which makes your routing system more flexible and customizable. This enhancement is used exclusively on the new Ethernet and Serial control panels, and the AccuSwitch CM controllers.

A Control Panel must be defined as the Device Type “CPESXTND” in the MPK Devices Table to use the 100 Event Sequences feature. Only the “CPESXTND” device type is allowed to have 100 Event Sequences. When more than 25 events are found, the compiler will check the MPK devices table to validate that all board types are AS.

Once a sequence set is used on an AccuSwitch board then the sequence set cannot be used on a Jupiter XPress or Jupiter control board. If a configuration set violates the AS requirement then the error message shown in Figure 7 will be displayed.

Figure 7. Compiler Error: Too Many Events



“Zero-Downtime” Support

This new feature allows configuration changes to be made in the AccuSwitch controller board’s MPK Devices Table. This includes, editing as well as inserting or deleting rows at the bottom of the table. These changes can then be downloaded without having to “reboot” the CM-4000 controller boards which imply “Zero-Downtime.”

Note This Zero-Downtime process requires that no other configuration changes being made that require a board reboot.

Attempting to Insert or Delete rows at a location other than at the end of the table will cause the following message to appear in the Compiler dialog box:

Inserting (or deleting) rows other than at the end of the MPK Devices table will change the row numbers of existing devices (below the insertion/deletion point). This will require the controller boards to be memory-cleared and reset.

Clearing or resetting the memory must be done by the User by using the Control Center.

To clear or reset the memory:

1. Open the Control Center
2. Click the Board Info/Control
3. Select all of the Control boards.
4. Click **Clear PMEM**.

CAUTION Deleting rows at the bottom of the MPK Devices Table, while adding new rows at the same time, may require the Memory to be cleared (Currently, no Message box is displayed with the information that the memory might need to be cleared).

Jupiter L, S, and LCD Panel Support

Introduction

This new feature allows users to use the Jupiter L, S, and LCD series control panels. For more information about the Jupiter L, S, and LCD series control panels, see the Jupiter L, S, and LCD series manual (071853600).

Soft Panel Support

Introduction

This new feature allows users to use the Jupiter Basic XY and Jupiter Multi-Level XY Soft Panels. These soft panels are Windows applications that are used to control a matrix router. For more information about the Jupiter Soft panels, see the Jupiter Soft panel manual (86204970).

Visual Status Display Support

Introduction

This new feature allows users to use the Jupiter Visual Status Display (VSD), which provides the most up-to-date status information for your router system. The VSD allows you to customize views including: the number of columns, text size, and so forth. For more information about the VSD application, see the Visual Status Display manual (part number).

Upgrade Procedure

Caveats

Before starting the upgrade procedure the following caveats must be read. During this upgrade procedure:

- All switcher status will be lost. To restore status, make note of the status of all outputs before starting the upgrade and re-take all switches. Or, you can use Router Save/Restore to restore status on Grass Valley (GV) routers.
- All memory on all Jupiter control system boards will be cleared due to a mandatory "pmemclear" command, following an installation and download process.
- All configuration sets will need to be recompiled.

Equipment Required

GV-supplied PC 3000 (F7-029500-121) file server or a PC with the following minimum requirements:

- Windows XP SP2 (English version)
- 2 GHz Pentium processor
- 1 GB of RAM
- 125 MB of Hard disk space for the Jupiter application
- Intel or 3Com Ethernet LAN card
- Keyboard and mouse

A minimum resolution of 1280 X 1024 and 32 -bit color PC monitor setting is recommended for proper display of the Jupiter Soft Panel and VSD screens. The Appearance font size on the Display Properties dialog (Control Panels> Display> Appearance: Font size drop-down list) should be set to Normal. Selecting either the *Large* or the *Extra Large Fonts* option will cause application display problems.

Software required

Installation of the Jupiter 7.7.0 release is only supported on the English version of Windows XP Professional SP2 or later. Windows Firewall and any Anti-Virus Firewall must be disabled to allow the bootp, tftp, and JNS applications to operate properly.

Materials supplied

Jupiter Software upgrade for:

JUP-SW 2500 (Jupiter LE for VM/SI-3000), or

JUP-SW 3100 (Jupiter Plus for VM-SI-3000), or

JUP-SW 3500 (Jupiter XPress for CM-4000):

QTY	Description	Part number
1	Software, CD, Jupiter v7.6.1	063809310
1	kit, documentation CD	7210077000
1	Release Notes	071827508

-OR-

Jupiter Software upgrade for:

JUP-SW 4000 (Jupiter AccuSwitch for CM-4000):

QTY	Description	Part number
1	Software, CD, Jupiter v7.6.1	063809310
1	Software, CD, NetConfig 2.0.9 and L, S, and LCD Panels 1.0.1 Code	063829600
1	kit, documentation CD	7210077000
1	Release Notes	071827508

Optional materials

The following manuals and optional software are also available:

- Application specific software licenses (refer to Section 1 of the Jupiter Installation and Operating manuals for more information)
- Jupiter VM/SI-3000 Installation and Operating Manual (VM-3000), part number- 0718305xx.
- Jupiter CM-4000 Installation and Operating Manual, part number- 0718261xx.
- L, S, and LCD-GUI (JEP) Series Jupiter Control Panels Manual, part number- 0718536xx. (Manual available online-contact Technical Support for more information.)

Software Update

CAUTION During the software update your Jupiter system will be taken off-line for a short time while the control boards (CM-4000) are updated. Existing matrix cross-points will remain selected, but source to destination changes will not be possible while the control boards are off-line.

Introduction

Note Read these instructions carefully and follow all the steps exactly to help ensure that your update goes smoothly.

Contact Grass Valley Customer Support if you have any questions regarding this software update.

Update Only Existing Jupiter Systems

This procedure is for updating an existing Jupiter system that has been previously installed, completely configured, and is operating correctly. New Jupiter systems ship from the factory with the latest version of software pre-installed. New systems do not need their software updated. However, new Jupiter systems will need to be configured to operate at your facility.

Installing the Jupiter Software Components

Updating a Previous Installation

The update procedure is a two-step process. The first step will remove the previous version of Jupiter. The second step will start the installation of the latest version of the application.

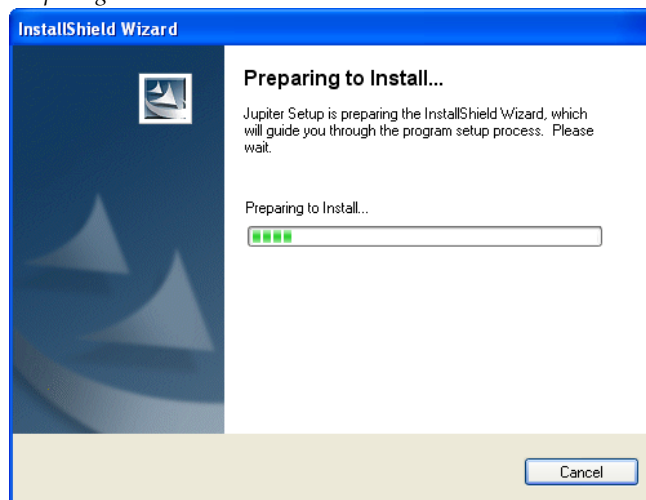
Removing the Previous Version

The Installation program will check to see if an earlier version of Jupiter is installed on the computer. The earlier version will be removed before the latest version will be installed. You will need to start the Installation program again after the earlier version has been removed.

To start the update process and remove the previous version:

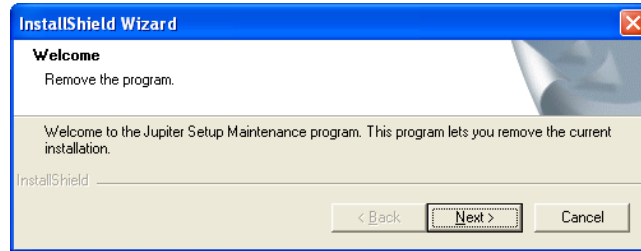
1. Insert the Jupiter System Software CD into the PC. If the Installation Program doesn't start up automatically, double-click the **Setup.exe** icon on the CD. The Preparing to Install screen will then be displayed (Figure 8).

Figure 8. Preparing to Install Screen



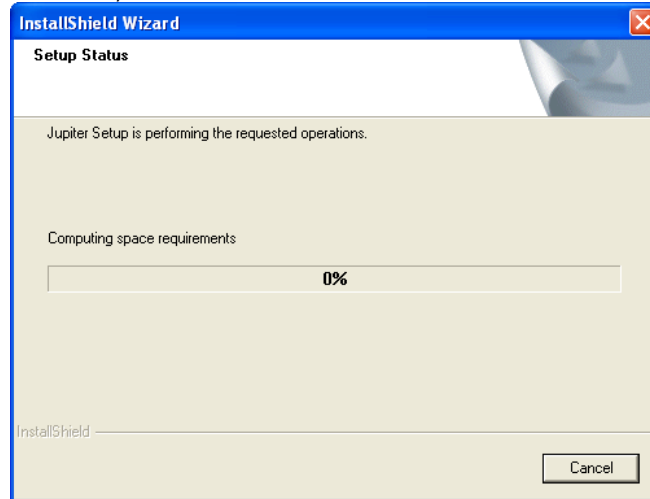
The Welcome - Remove the program screen will then appear after a few minutes (Figure 9).

Figure 9. Welcome - Remove the Program Screen



2. Click the **Next>** button. The Setup Status screen will then appear (Figure 10).

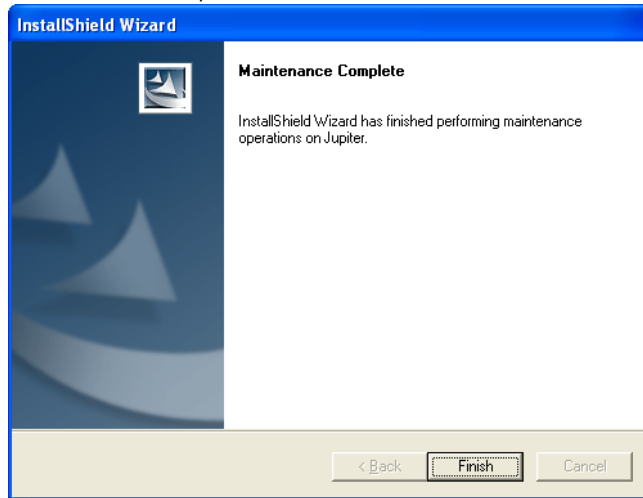
Figure 10. Setup Status Screen



The previous version of the application will then be removed.

When the removal of the application has been completed, the Maintenance Complete screen will then appear (Figure 11).

Figure 11. Maintenance Complete Screen



3. Click the **Finish** button. The InstallShield Wizard application will then close.

You can now install the latest version of Jupiter.

Installing the Latest Version

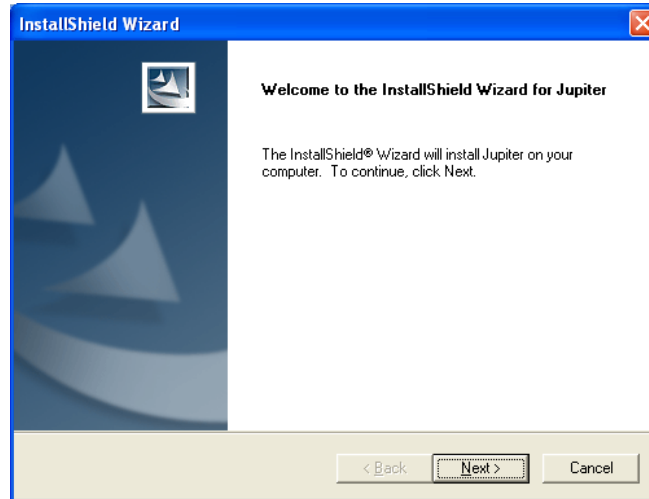
Note To help ensure any hidden activity is stopped you should restart the computer.

Before you begin the installation process make sure you close all Jupiter programs on the configuration PC and disable any virus protection programs or firewalls.

To start a new installation Process:

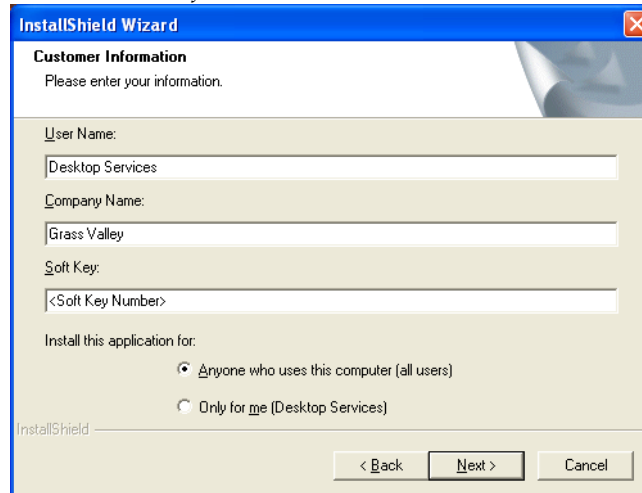
1. Insert the Jupiter System Software CD into the PC. If the Installation Program doesn't start up automatically, double-click the **Setup.exe** icon on the CD. The Jupiter Installation Welcome screen will then be displayed (Figure 12).

Figure 12. Jupiter Installation Welcome Screen



2. Click the **Next >** button. The Customer Information screen will then appear (Figure 13).

Figure 13. Customer Information



3. Enter your User Name, Company Name, and the Soft Key in their respective fields.

Note The Soft key can be found on the plastic case that the Jupiter CD was shipped with.

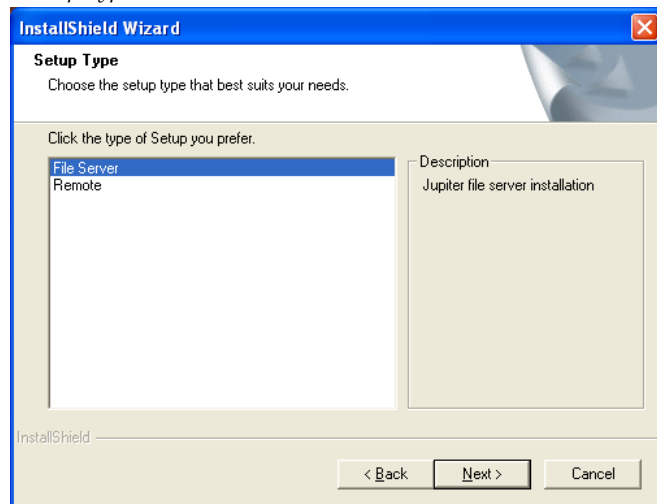
4. Select the **Anyone who uses this computer (all users)** radio button.
5. Click the **Next >** button. The Software License Agreement screen will then appear (Figure 14).

Figure 14. License Agreement



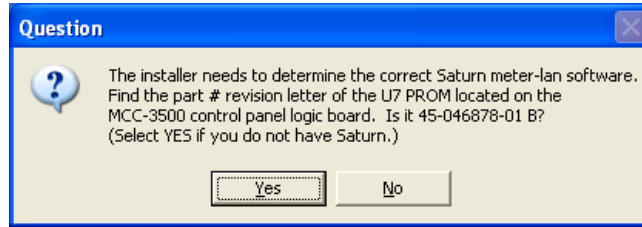
6. Click the **Yes** button to accept the license agreement. The Setup Type screen will then appear (Figure 15).

Figure 15. Setup Type Screen



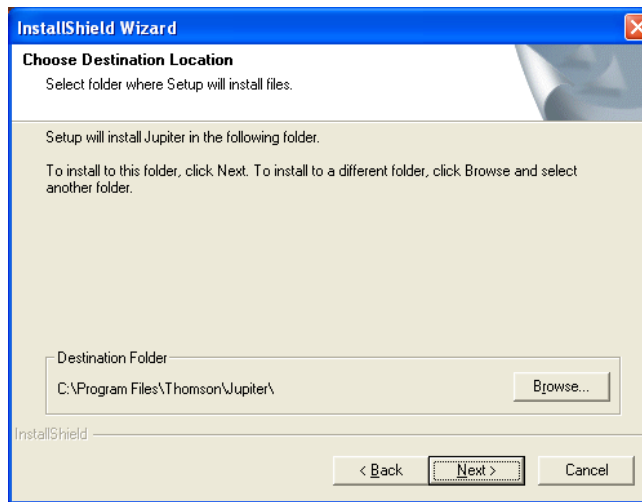
7. Select the preferred type of installation and then click the **Next >** button. The Question dialog will then appear (Figure 16). You will need the Part Number Revision letter on the MCC-3500 Control Panel Logic board. For example, in figure below the part number is correct.

Figure 16. Question Screen



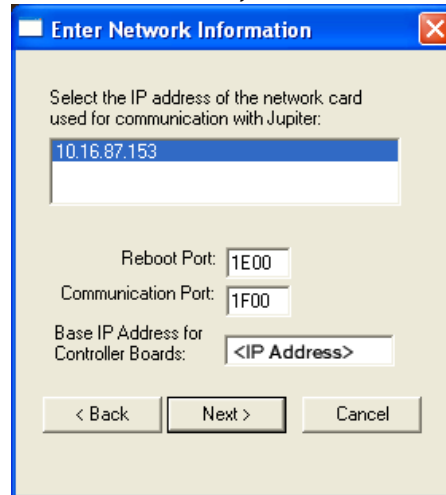
8. Click the **Yes** button if the letter is correct or if you are not using the Saturn Master Control system. The Choose Destination location screen will then appear (Figure 17).

Figure 17. Choose Destination Location Screen



9. Browse to the Destination folder of your choice and then click the **Next >** button. The Enter Network Information dialog will then appear (Figure 18).

Figure 18. Enter Network Information Screen



10. Select the IP address for the Network card that will communicate with the Jupiter system.

Note Consult with your Network administrator if you do not know the network values to enter.

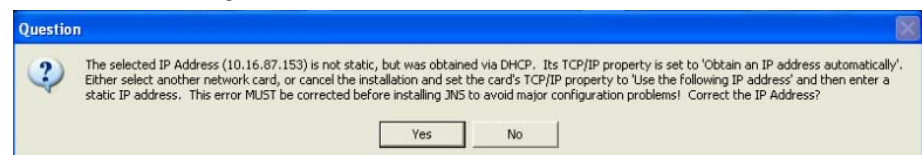
- If there is more than one Network card, they will all appear in the dialog window.
- Enter the Port information in the respective fields

11. Enter the IP address for the Controller boards in the required field and then click the **Next>** button.

Using DHCP

If you are using DHCP, that is your IP address is not static, you will see the following Question dialog (Figure 19).

Figure 19. Question Dialog



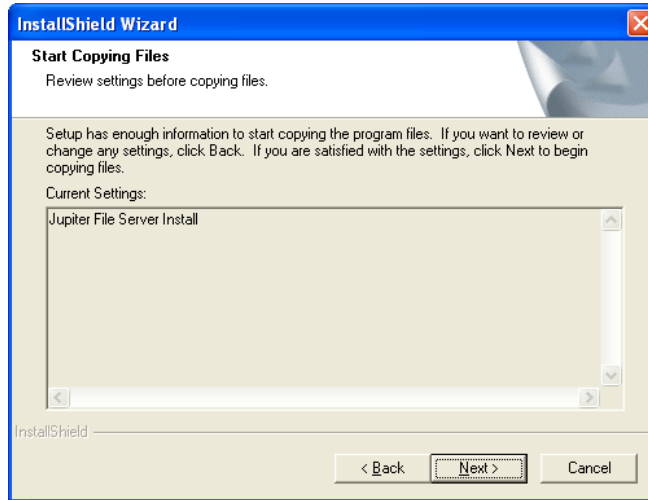
Note It is strongly recommended that you use a Static IP address. Using DHCP may cause configuration problems.

If you want to correct the IP address, click the **Yes** button. The Choose Destination Location screen will then appear.

Using a Static IP Address

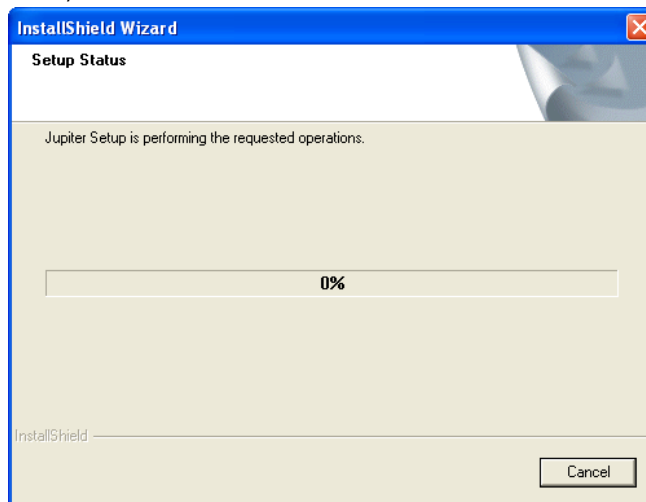
The Start Copying Files screen will appear (Figure 20).

Figure 20. Start Copying Files Screen



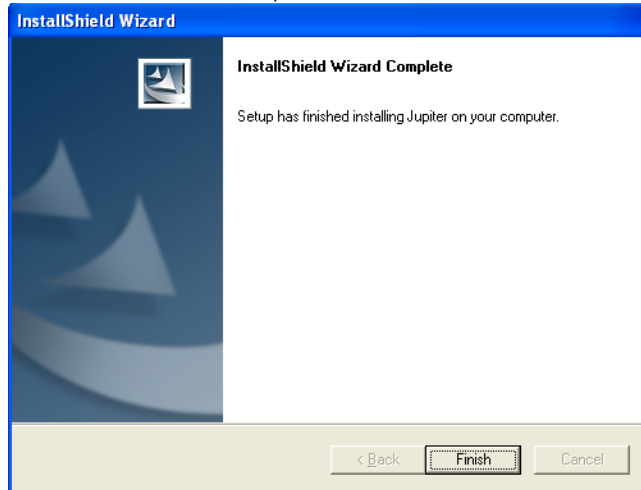
12. Review the Current Settings and then click the **Next>** button. The Setup Status screen will then appear (Figure 21).

Figure 21. Setup Status Screen



When the Installation process is completed the InstallShield Wizard Complete screen will appear (Figure 22).

Figure 22. InstallShield Wizard Complete Screen



13. Click the **Finish** button. The installation process is now completed.

