



Jupiter

CONTROL SYSTEM

Release Notes
Software Version 7.8.0



Affiliate with the N.V. KEMA in The Netherlands



CERTIFICATE

Certificate Number: 510040.001

The Quality System of:

Thomson Inc, and it's worldwide Grass Valley division affiliates DBA GRASS VALLEY

Headquarters
400 Providence Mine Rd
Nevada City, CA 95959
United States

15655 SW Greystone Ct.
Beaverton, OR 97006
United States

10 Presidential Way
Suite 300
Woburn, MA 01801
United States

Kapittelweg 10
4827 HG Breda
The Netherlands

7140 Baymeadows Way
Ste 101
Jacksonville, FL 32256
United States

2300 So. Decker Lake Blvd.
Salt Lake City, UT 84119
United States

Rue du Clos Courtel
CS 31719
35517 Cesson-Sevigné Cedex
France

1 rue de l'Hautil
Z.I. des Boutries BP 150
78702 Conflans-Sainte
Honorine Cedex
France

Technopole Brest-Iroise
Site de la Pointe du Diable
CS 73808
29238 Brest Cedex 3
France

40 Rue de Bray
2 Rue des Landelles
35510 Cesson Sevigné
France

Spinnereistrasse 5
CH-5300 Turgi
Switzerland

Brunnenweg 9
D-64331 Weiterstadt
Germany

Carl-Benz-Strasse 6-8
67105 Schifferstadt
Germany

Including its implementation, meets the requirements of the standard:

ISO 9001:2008

Scope:

The design, manufacture and support of video and audio hardware and software products and related systems.

This Certificate is valid until: June 14, 2012
This Certificate is valid as of: June 14, 2009
Certified for the first time: June 14, 2000

H. Pierre Sallé
President
KEMA-Registered Quality

The method of operation for quality certification is defined in the KEMA General Terms And Conditions For Quality And Environmental Management Systems Certifications. Integral publication of this certificate is allowed.

KEMA-Registered Quality, Inc.
4377 County Line Road
Chalfont, PA 18914
Ph: (215)997-4519
Fax: (215)997-3809

CRT 001 073004

Accredited By:
ANAB

Experience you can trust.



Jupiter

CONTROL SYSTEM

Release Notes

Software Version 7.8.0

Contacting Grass Valley

International Support Centers	France 24 x 7	+800 8080 2020 or +33 1 48 25 20 20	United States/Canada 24 x 7	+1 800 547 8949 or +1 530 478 4148
Local Support Centers (available during normal business hours)	Asia	Hong Kong, Taiwan, Korea, Macau: +852 2531 3058 Indian Subcontinent: +91 22 24933476 Southeast Asia/Malaysia: +603 7805 3884 Southeast Asia/Singapore: +65 6379 1313 China: +861 0660 159 450 Japan: +81 3 5484 6868		
		Australia and New Zealand: +61 1300 721 495	Central/South America: +55 11 5509 3443	
		Middle East: +971 4 299 64 40 Near East and Africa: +800 8080 2020 or +33 1 48 25 20 20		
	Europe	Belarus, Russia, Tadzikistan, Ukraine, Uzbekistan: +7 095 2580924 225 Switzerland: +41 1 487 80 02 S. Europe/Italy-Roma: +39 06 87 20 35 28 -Milan: +39 02 48 41 46 58 S. Europe/Spain: +34 91 512 03 50 Benelux/Belgium: +32 (0) 2 334 90 30 Benelux/Netherlands: +31 (0) 35 62 38 42 1 N. Europe: +45 45 96 88 70 Germany, Austria, Eastern Europe: +49 6150 104 444 UK, Ireland, Israel: +44 118 923 0499		

Copyright © Thomson, Inc. All rights reserved.
This product may be covered by one or more U.S. and foreign patents.

Grass Valley Web Site

The www.grassvalley.com web site offers the following:

Online User Documentation — Current versions of product catalogs, brochures, data sheets, ordering guides, planning guides, manuals, and release notes in .pdf format can be downloaded.

FAQ Database — Solutions to problems and troubleshooting efforts can be found by searching our Frequently Asked Questions (FAQ) database.

Software Downloads — Download software updates, drivers, and patches.



END-OF-LIFE PRODUCT RECYCLING NOTICE

Grass Valley's innovation and excellence in product design also extends to the programs we've established to manage the recycling of our products. Grass Valley has developed a comprehensive end-of-life product take back program for recycle or disposal of end-of-life products. Our program meets the requirements of the European Union's WEEE Directive, the United States Environmental Protection Agency, and U.S. state and local agencies.

Grass Valley's end-of-life product take back program assures proper disposal by use of Best Available Technology. This program accepts any Grass Valley branded equipment. Upon request, a Certificate of Recycling or a Certificate of Destruction, depending on the ultimate disposition of the product, can be sent to the requester.

Grass Valley will be responsible for all costs associated with recycling and disposal, including freight. However, you are responsible for the removal of the equipment from your facility and packing the equipment to make it ready for pickup.



For further information on the Grass Valley product take back system please contact Grass Valley at + 800 80 80 20 20 or +33 1 48 25 20 20 from most other countries. In the U.S. and Canada please call 800-547-8949 or 530-478-4148, and ask to be connected to the EH&S Department. Additional information concerning the program can be found at: www.thomsongrassvalley.com/environment



Contents

- Jupiter Release Notes** 7
 - Introduction 7
 - New Features in Jupiter Release 7.8.0 AccuSwitch 7
 - Upgrade Procedure..... 8
 - Caveats 8
 - Equipment Required..... 8
 - Software Required..... 9
 - Materials Supplied 9
 - Optional Materials..... 10
 - Software Update 10
 - Introduction 10
 - Update Only Existing Jupiter Systems 10
 - Installing the Jupiter Software Components..... 11
 - Updating a Previous Installation 11
 - Removing the Previous Version 11
 - Installing the Latest Version 13
 - Serial Protocol Table Entries 20
 - MPK Table Entries..... 20

Version **7.8.0**
JUNE 2009

Jupiter Release Notes

Introduction

This document describes product enhancements provided by the 7.8.0 version of the Jupiter Control System. It also describes the installation procedure used to upgrade a Jupiter system from version 7.7.0 to 7.8.0 (See the [Upgrade Procedure](#) section).

Note This release supports English versions of Windows XP Professional operating systems only.

New Features in Jupiter Release 7.8.0 AccuSwitch

The 7.8.0 version of the Jupiter AccuSwitch Control system software supports Serial connections for the L-S and LCD Control panels.

This feature provides customers with improved flexibility when connecting Control panels to meet their business needs.

Note To use the new Serial connection feature, you must have version 2.0 (or newer) of the Control Panel software installed.

Upgrade Procedure

Caveats

Before starting the upgrade procedure the following caveats must be read. During this upgrade procedure:

- All switcher status will be lost. To restore status, make note of the status of all outputs before starting the upgrade and re-take all switches. Or, you can use Router Save/Restore to restore status on Grass Valley (GV) routers.
- All memory on all Jupiter control system boards will be cleared after the installation and download process. The memory is cleared due to a mandatory “pmemclear” command.
- All configuration sets will need to be recompiled.

Equipment Required

GV-supplied PC 3000 (F7-029500-121) file server or a PC with the following minimum requirements:

- Windows XP SP2 (English version)
- 2 GHz Pentium processor
- 1 GB of RAM
- 125 MB of Hard disk space for the Jupiter application
- Intel or 3Com Ethernet LAN card
- Keyboard and mouse

A minimum resolution of 1280 X 1024 and 32 -bit color PC monitor setting is recommended for proper display of the Jupiter Soft Panel and VSD screens. The Appearance font size on the Display Properties dialog (Control Panels> Display> Appearance: Font size drop-down list) should be set to Normal. Selecting either the *Large* or the *Extra Large Fonts* option will cause application display problems.

Note To use the new Serial connection feature, you must have version 2.0 (or newer) of the Control Panel software installed.

Software Required

Installation of the Jupiter 7.8.0 release is only supported on the English version of Windows XP Professional SP2 or later. Windows Firewall and any Anti-Virus Firewall must be disabled to allow the Bootp, tFTP, and JNS applications to operate properly.

Materials Supplied

The information shown below in the following tables are supplied with the release.

Jupiter Software upgrade for:

JUP-SW 2500 (Jupiter LE for VM/SI-3000), or

JUP-SW 3100 (Jupiter Plus for VM-SI-3000), or

JUP-SW 3500 (Jupiter XPress for CM-4000):

QTY	Description	Part number
1	Software, CD, Jupiter v7.6.1	063809312
1	Release Notes	071827508

-OR-

Jupiter Software upgrade for:

JUP-SW 4000 (Jupiter AccuSwitch for CM-4000):

QTY	Description	Part number
1	Software, CD, Jupiter v7.8.0	063809312
1	Software, CD, NetConfig 2.0.9 and L, S, and LCD Panels 2.0 Code	063829603
1	Release Notes	071827510

Optional Materials

The following manuals and optional software are also available:

- Application specific software licenses (refer to Section 1 of the Jupiter Installation and Operating manuals for more information)
- Jupiter VM/SI-3000 Installation and Operating Manual (VM-3000), part number- 0718305xx.
- Jupiter CM-4000 Installation and Operating Manual, part number- 0718261xx.
- L, S, and LCD-GUI (JEP) Series Jupiter Control Panels Manual, part number- 0718536xx. (Manual available online-contact Technical Support for more information.)

Software Update

CAUTION During the software update your Jupiter system will be taken off-line for a short time while the control boards (CM-4000) are updated. Existing matrix cross-points will remain selected, but source to destination changes will not be possible while the control boards are off-line.

Introduction

Note Read these instructions carefully and follow all the steps exactly to help ensure that your update goes smoothly.

Contact Grass Valley Customer Support if you have any questions regarding this software update.

Update Only Existing Jupiter Systems

This procedure is for updating an existing Jupiter system that has been previously installed, completely configured, and is operating correctly. New Jupiter systems ship from the factory with the latest version of software pre-installed. New systems do not need their software updated. However, new Jupiter systems will need to be configured to operate at your facility.

Installing the Jupiter Software Components

Updating a Previous Installation

The update procedure is a two-step process. The first step will remove the previous version of Jupiter. The second step will start the installation of the latest version of the application.

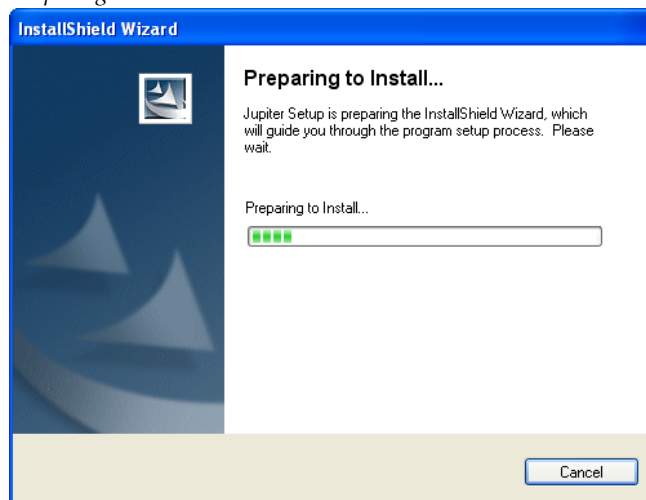
Removing the Previous Version

The Installation program will check to see if an earlier version of Jupiter is installed on the computer. The earlier version will be removed before the latest version will be installed. You will need to start the Installation program again after the earlier version has been removed.

To start the update process and remove the previous version:

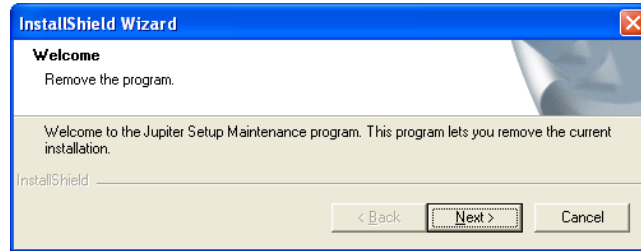
1. Insert the Jupiter System Software CD into the PC. If the Installation Program doesn't start up automatically, double-click the **Setup.exe** icon on the CD. The Preparing to Install screen will then be displayed (Figure 1).

Figure 1. Preparing to Install Screen



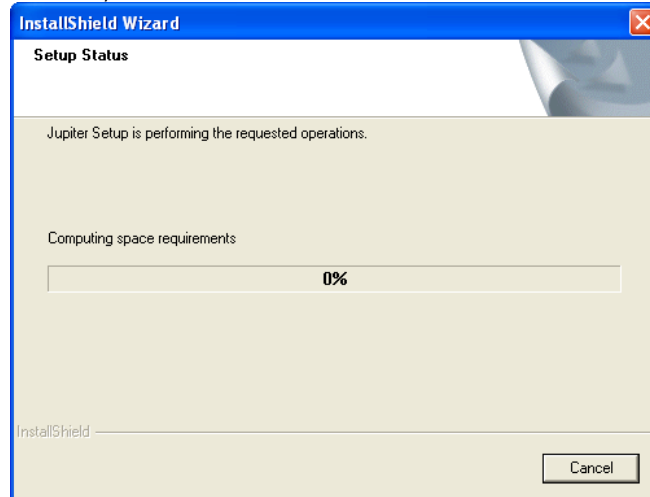
The Welcome - Remove the program screen will then appear after a few minutes (Figure 2).

Figure 2. Welcome - Remove the Program Screen



2. Click the **Next>** button. The Setup Status screen will then appear (Figure 3).

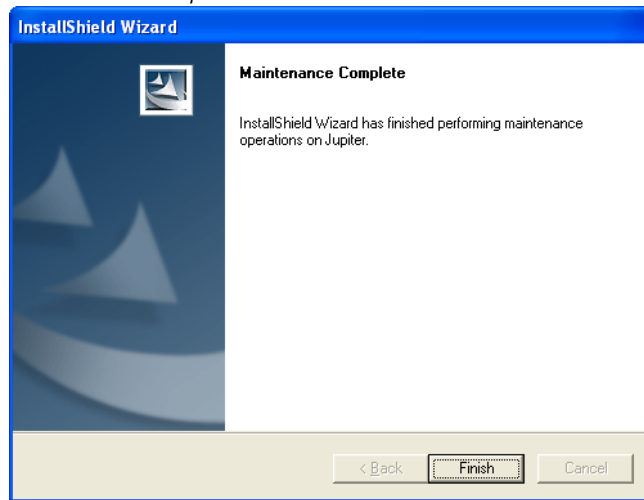
Figure 3. Setup Status Screen



The previous version of the application will then be removed.

When the removal of the application has been completed, the Maintenance Complete screen will then appear (Figure 4).

Figure 4. Maintenance Complete Screen



3. Click the **Finish** button. The InstallShield Wizard application will then close.

You can now install the latest version of Jupiter.

Installing the Latest Version

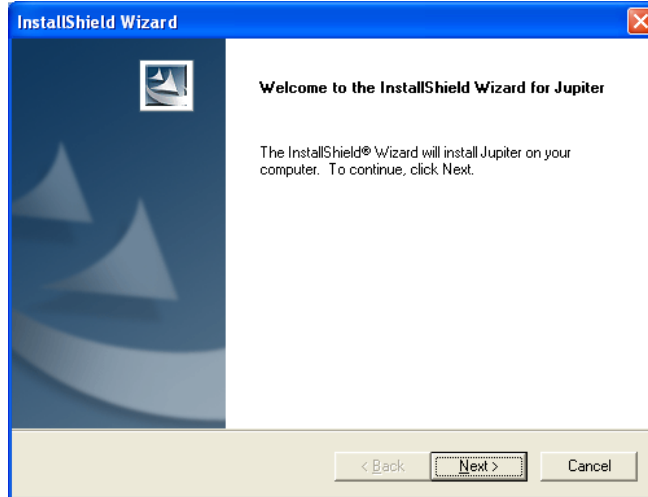
Note To help ensure any hidden activity is stopped you should restart the computer.

Before you begin the installation process make sure you close all Jupiter programs on the configuration PC and disable any virus protection programs or firewalls.

To start a new installation Process:

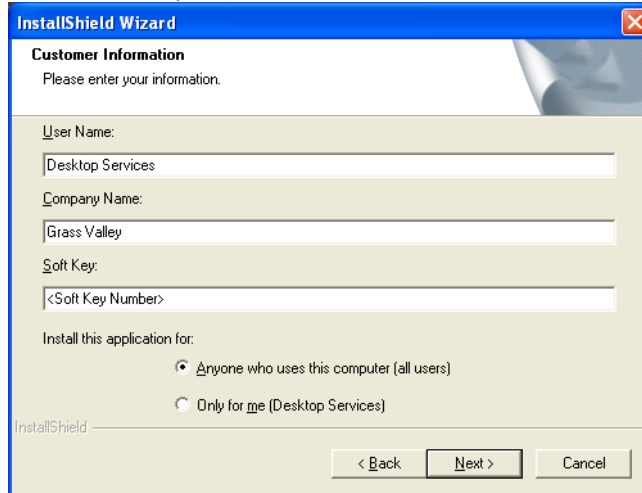
1. Insert the Jupiter System Software CD into the PC. If the Installation Program doesn't start up automatically, double-click the **Setup.exe** icon on the CD. The Jupiter Installation Welcome screen will then be displayed (Figure 5).

Figure 5. Jupiter Installation Welcome Screen



2. Click the **Next >** button. The Customer Information screen will then appear (Figure 6).

Figure 6. Customer Information



3. Enter your User Name, Company Name, and the Soft Key in their respective fields.

Note The Soft key can be found on the plastic case that the Jupiter CD was shipped with.

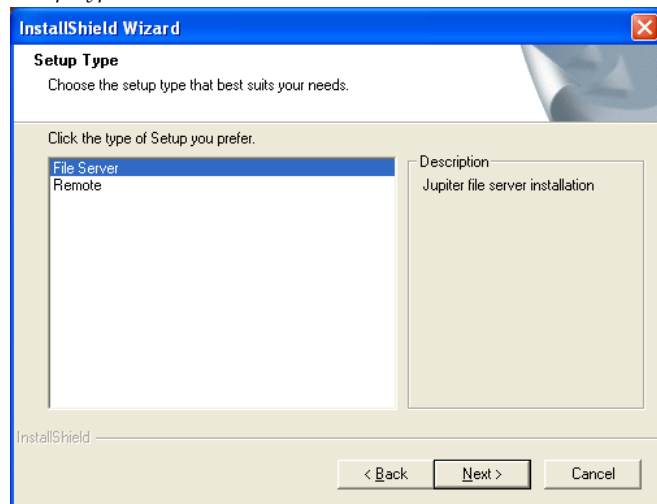
4. Select the **Anyone who uses this computer (all users)** radio button.
5. Click the **Next >** button. The Software License Agreement screen will then appear (Figure 7).

Figure 7. License Agreement



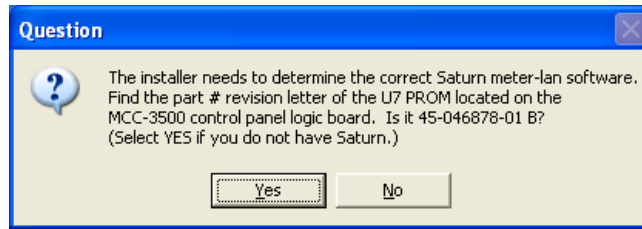
6. Click the **Yes** button to accept the license agreement. The Setup Type screen will then appear (Figure 8).

Figure 8. Setup Type Screen



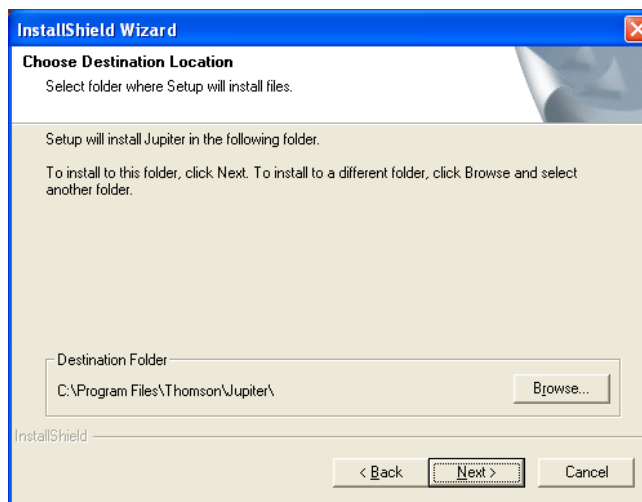
7. Select the preferred type of installation and then click the **Next >** button. The Question dialog will then appear (Figure 9). You will need the Part Number Revision letter on the MCC-3500 Control Panel Logic board. For example, in figure below the part number is correct.

Figure 9. Question Screen



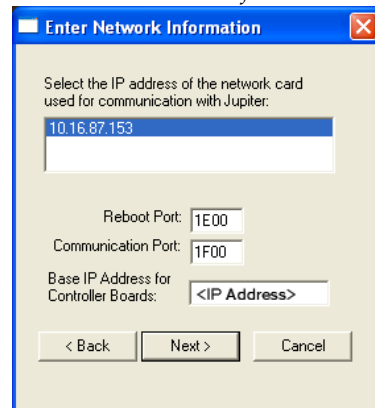
8. Click the **Yes** button if the letter is correct or if you are not using the Saturn Master Control system. The Choose Destination location screen will then appear (Figure 10).

Figure 10. Choose Destination Location Screen



9. Browse to the Destination folder of your choice and then click the **Next >** button. The Enter Network Information dialog will then appear (Figure 11).

Figure 11. Enter Network Information Screen



10. Select the IP address for the Network card that will communicate with the Jupiter system.

Note Consult with your Network administrator if you do not know the network values to enter.

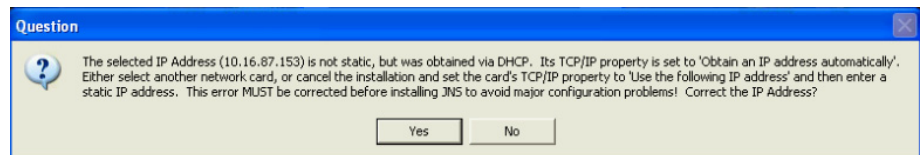
- If there is more than one Network card, they will all appear in the dialog window.
- Enter the Port information in the respective fields

11. Enter the IP address for the Controller boards in the required field and then click the **Next>** button.

Using DHCP

If you are using DHCP, that is your IP address is not static, you will see the following Question dialog (Figure 12).

Figure 12. Question Dialog



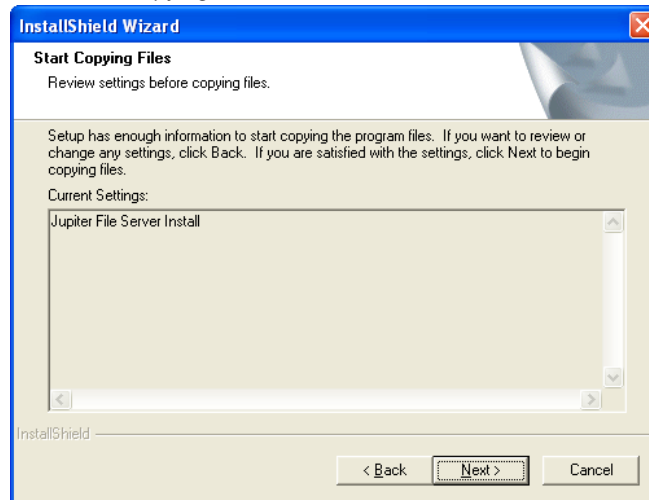
Note It is strongly recommended that you use a Static IP address. Using DHCP may cause configuration problems.

If you want to correct the IP address, click the **Yes** button. The Choose Destination Location screen will then appear.

Using a Static IP Address

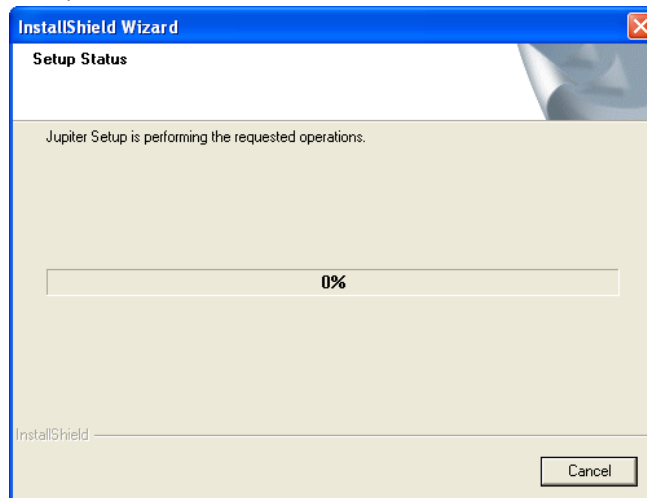
The Start Copying Files screen will appear (Figure 13).

Figure 13. Start Copying Files Screen



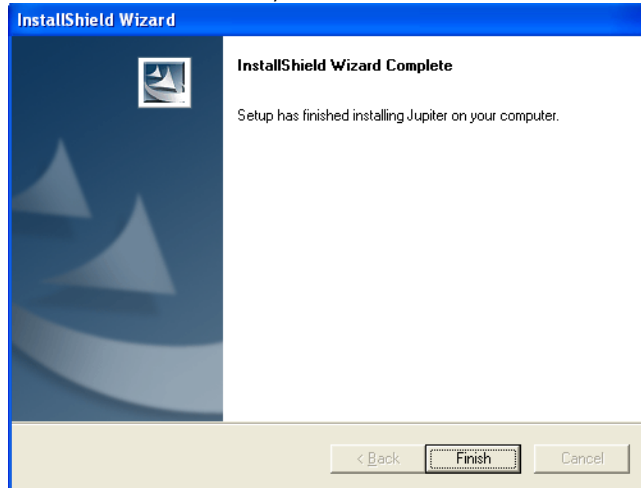
1. Review the Current Settings and then click the **Next>** button. The Setup Status screen will then appear (Figure 14).

Figure 14. Setup Status Screen



When the Installation process is completed the InstallShield Wizard Complete screen will appear (Figure 15).

Figure 15. InstallShield Wizard Complete Screen



2. Click the **Finish** button. The installation process is now completed.

Serial Protocol Table Entries

When an L-S or LCD Panels is connected to a CM-4000 serial port (and operated in Serial mode), the CM-4000 serial port must be configured for “ESCP” protocol using the Serial Protocol table. The Baud rate should be set at 115K. Use the CPES-SER type for panels to use up to 98 categories.

MPK Table Entries

Although the L-S or LCD Panels are not actually an MPK-type panel (it has an on-board microprocessor and does not use the Message Per Key stroke protocol), the MPK table is used for configuration purposes. An example is shown below in [Figure 16](#).

Note If the phrase, “Follows the same rules as L/S/LCD panels,” is shown below the settings are the same as the ones described in the [Jupiter System Configuration](#) section of this manual.

Figure 16. MPK Devices Table

MPK Devices																
	MPK Devices	Device Type	Expansion	Password	Board	Port	Address	Input Sets	In Panel	Output Sets	Out Panel	Level Set	Override Set	Sequence Set		
1	CP1	CPES-SER	<input type="checkbox"/>		CM1	1	01	CP_IN		CPOUT		CP_LEV				
2	CP2	CPES-SER	<input type="checkbox"/>		CM1	1	02	CP_IN		CPOUT		CP_LEV				
⋮																
16	CP16	CPES-SER	<input type="checkbox"/>		CM1	1	16	CP_IN		CPOUT		CP_LEV				
17	CP17	CPESXTND	<input type="checkbox"/>		CM1		01	CP_IN		CPOUT		CP_LEV				

MPK Devices - This column is used to create a name, up to eight characters in length, for each L-S or LCD Panels. This name must be unique system-wide.

Type - Select type CPES-SER for panels to use up to 98 categories.

Note CPES-SER is the serial equivalent to the CPESXTND type.

Expansion - Not used for L-S or LCD Panels (leave unchecked).

Password - Password level only needs to be entered if you wish to disable the Configuration and Setup menus on the Control panel. See the *Disabling the Configuration and Setup Menus on the Control Panel* section of the L-S and LCD Control Panel manual (part # 071853602).

Board - The name of CM-4000 connected to this L-S or LCD Panels. The source of this name is the Jupiter Network Description table.

Port - The port number that is configured for ESCP to which the panel is connected. ESCP is defined in the Serial Protocol Table.

Address - The panel address from 1 to 16. This address must be unique for panels sharing the same CM-4000 serial port.

Panels are normally shipped with a panel address of "01." This number is referred to as the "Device Number" on the IP configuration page and "ID" within the L-S or LCD Panels MENU system.

Input Set - Input and output set types should be CPESXTND for Device type CPES-SER.

In Panel - This column is not used for L-S or LCD panels.

Out Set - Input and output set types should be CPESXTND for Device type CPES-SER. If the entry is an actual CP Output Set, then the control panel will be able to control all the outputs listed in that Set. Depending on the contents of the set, this would allow for full-matrix or multi-bus control.

Out Panel - This column is not used for L-S or LCD panels.

Level Set - Follows the same rules as L/S/LCD panels.

Override Set - Follows the same rules as L/S/LCD panels.

Sequence - Follows the same rules as L/S/LCD panels.

