



JUPITER

CONTROL SYSTEM

Release Notes
Software Version 7.8.1



Affiliate with the N.V. KEMA in The Netherlands



CERTIFICATE

Certificate Number: 510040.001

The Quality System of:

Thomson Inc, and it's worldwide Grass Valley division affiliates DBA GRASS VALLEY

Headquarters
400 Providence Mine Rd
Nevada City, CA 95959
United States

15655 SW Greystone Ct.
Beaverton, OR 97006
United States

10 Presidential Way
Suite 300
Woburn, MA 01801
United States

Kapittelweg 10
4827 HG Breda
The Netherlands

7140 Baymeadows Way
Ste 101
Jacksonville, FL 32256
United States

2300 So. Decker Lake Blvd.
Salt Lake City, UT 84119
United States

Rue du Clos Courtel
CS 31719
35517 Cesson-Sevigné Cedex
France

1 rue de l'Hautil
Z.I. des Boutries BP 150
78702 Conflans-Sainte
Honorine Cedex
France

Technopole Brest-Iroise
Site de la Pointe du Diable
CS 73808
29238 Brest Cedex 3
France

40 Rue de Bray
2 Rue des Landelles
35510 Cesson Sevigné
France

Spinnereistrasse 5
CH-5300 Turgi
Switzerland

Brunnenweg 9
D-64331 Weiterstadt
Germany

Carl-Benz-Strasse 6-8
67105 Schifferstadt
Germany

Including its implementation, meets the requirements of the standard:

ISO 9001:2008

Scope:

The design, manufacture and support of video and audio hardware and software products and related systems.

This Certificate is valid until: June 14, 2012
This Certificate is valid as of: June 14, 2009
Certified for the first time: June 14, 2000

H. Pierre Sallé
President
KEMA-Registered Quality

The method of operation for quality certification is defined in the KEMA General Terms And Conditions For Quality And Environmental Management Systems Certifications. Integral publication of this certificate is allowed.

KEMA-Registered Quality, Inc.
4377 County Line Road
Chalfont, PA 18914
Ph: (215)997-4519
Fax: (215)997-3809

CRT 001 073004

Accredited By:
ANAB

Experience you can trust.



JUPITER

CONTROL SYSTEM

Release Notes

Software Version 7.8.1

Contacting Grass Valley

International Support Centers	France 24 x 7	+800 8080 2020 or +33 1 48 25 20 20	United States/Canada 24 x 7	+1 800 547 8949 or +1 530 478 4148
Local Support Centers (available during normal business hours)	Asia	Hong Kong, Taiwan, Korea, Macau: +852 2531 3058 Indian Subcontinent: +91 22 24933476 Southeast Asia/Malaysia: +603 7805 3884 Southeast Asia/Singapore: +65 6379 1313 China: +861 0660 159 450 Japan: +81 3 5484 6868		
		Australia and New Zealand: +61 1300 721 495	Central/South America: +55 11 5509 3443	
		Middle East: +971 4 299 64 40 Near East and Africa: +800 8080 2020 or +33 1 48 25 20 20		
	Europe	Belarus, Russia, Tadzikistan, Ukraine, Uzbekistan: +7 095 2580924 225 Switzerland: +41 1 487 80 02 S. Europe/Italy-Roma: +39 06 87 20 35 28 -Milan: +39 02 48 41 46 58 S. Europe/Spain: +34 91 512 03 50 Benelux/Belgium: +32 (0) 2 334 90 30 Benelux/Netherlands: +31 (0) 35 62 38 42 1 N. Europe: +45 45 96 88 70 Germany, Austria, Eastern Europe: +49 6150 104 444 UK, Ireland, Israel: +44 118 923 0499		

Copyright © Grass Valley, Inc. All rights reserved.
This product may be covered by one or more U.S. and foreign patents.

Grass Valley Web Site

The www.grassvalley.com web site offers the following:

Online User Documentation — Current versions of product catalogs, brochures, data sheets, ordering guides, planning guides, manuals, and release notes in .pdf format can be downloaded.

FAQ Database — Solutions to problems and troubleshooting efforts can be found by searching our Frequently Asked Questions (FAQ) database.

Software Downloads — Download software updates, drivers, and patches.



END-OF-LIFE PRODUCT RECYCLING NOTICE

Grass Valley's innovation and excellence in product design also extends to the programs we've established to manage the recycling of our products. Grass Valley has developed a comprehensive end-of-life product take back program for recycle or disposal of end-of-life products. Our program meets the requirements of the European Union's WEEE Directive, the United States Environmental Protection Agency, and U.S. state and local agencies.

Grass Valley's end-of-life product take back program assures proper disposal by use of Best Available Technology. This program accepts any Grass Valley branded equipment. Upon request, a Certificate of Recycling or a Certificate of Destruction, depending on the ultimate disposition of the product, can be sent to the requester.

Grass Valley will be responsible for all costs associated with recycling and disposal, including freight. However, you are responsible for the removal of the equipment from your facility and packing the equipment to make it ready for pickup.

For further information on the Grass Valley product take back system please contact Grass Valley at + 800 80 80 20 20 or +33 1 48 25 20 20 from most other countries. In the U.S. and Canada please call 800-547-8949 or 530-478-4148, and ask to be connected to the EH&S Department. Additional information concerning the program can be found at: www.thomsongrassvalley.com/environment



Contents

- JUPITER Release Notes** 7
 - Introduction 7
 - New Features in Jupiter Release 7.8.1 AccuSwitch 7
 - Defined Serial Connections 8
 - Defined Router Connections 8
 - AccuSwitch Configuration File Overview 8
 - Uploading a Configuration File from AccuSwitch..... 9
 - Unzipping, Opening, Editing, and Compiling the Configuration Set..... 11
 - Configuration Error Checking for the CPES-SER Device Type 11
 - Router Options 12
 - The SAFE input 12
 - Point-to-Point Switching..... 12
 - Router Options 13
 - Force Unlock / Unprotect..... 13
 - Upgrading to 7.8.1..... 15
 - Caveats 15
 - Equipment Required..... 15
 - Software Required..... 15
 - Materials Supplied 16
 - Optional Materials..... 16
 - Software Update 17
 - Update Only Existing Jupiter Systems 17
 - Installing the Jupiter Software Components..... 18
 - Updating a Previous Installation 18
 - Removing the Previous Version 18
 - Installing the Latest Version 20

JUPITER Release Notes

Introduction

This document describes new product enhancements that are provided by the 7.8.1 version of the Jupiter Control System. It also describes the installation procedure that should be used to upgrade a Jupiter system to the 7.8.1 version (See the [Upgrading to 7.8.1](#) section).

Note This release only supports the English version of Windows XP Professional Operating system.

New Features in Jupiter Release 7.8.1 AccuSwitch

The 7.8.1 version of the Jupiter AccuSwitch Control system software has the following enhancements:

- It is no longer necessary to define serial connections in AccuSwitch's MPK devices table.
- It is no longer necessary to define router Levels in AccuSwitch.
- The Jupiter AccuSwitch Control system software supports uploading configuration files from an AccuSwitch controller to the Jupiter File Server.
- The Jupiter Configurator application now has additional error checking for the CPES-SER Device type configuration.
- Point-to-point switching Router options.
- Unlock and Unprotect option.

These features provide customers with improved control, convenience, and flexibility when connecting and using Jupiter's control panels.

Defined Serial Connections

In previous releases of the Jupiter system, a Serial port had to be defined in the Serial Protocol table and a serial device needed to be defined on that port in the MPK Devices table. If a serial connection was not defined, the CM-4000 board would not start successfully.

In the 7.8.1 version of Jupiter, Jupiter XPress and AccuSwitch boards will operate without a serial device defined.

Defined Router Connections

In previous releases of the Jupiter system, a router or Levels had to be defined in the Switcher Description table for each board. In the 7.8.1 version of Jupiter, an AccuSwitch board will run without requiring a configured Level for the AccuSwitch board.

AccuSwitch Configuration File Overview

When a Configuration set is activated from the Control Center a zipped copy of the configuration will be downloaded to the AccuSwitch control board. Uploaded sets, which are named `_Active.zip` and `_Prev.zip`, are placed in the `Jupiter\Logdata` directory.

In order to work with an uploaded set, you will need to use the existing Unzip Configuration Set menu option (Tools > Unzip Configuration Set menu) to unzip the `_Active.zip` and `_Prev.zip` files. You should rename the configuration to avoid any conflicts the next time a Configuration file is uploaded. You can then edit and compile the set as you would any other set.

Note There will not be a `_Prev.zip` file when only one configuration has been sent to an AccuSwitch control board.

A Clear Flash command will remove the Previous Configuration file on an AccuSwitch board. However, a Clear Flash command, on a Jupiter Xpress board will not remove the Previous Configuration file.

Uploading a Configuration File from AccuSwitch

The Configuration Info and Set Upload application will upload the active configuration from a specified Control Module (CM). The CM can be either an AccuSwitch or a Jupiter XPress CM. When you select a CM and then select the Upload Source option (Tools > CM4000 Configuration Info and Set Upload), the current `_Active.zip` file (Jupiter\Logdata_Active.zip) is deleted and the new `_Active.zip` and `_Prev.zip` files will then automatically be sent to the Jupiter File Server using TFTP.

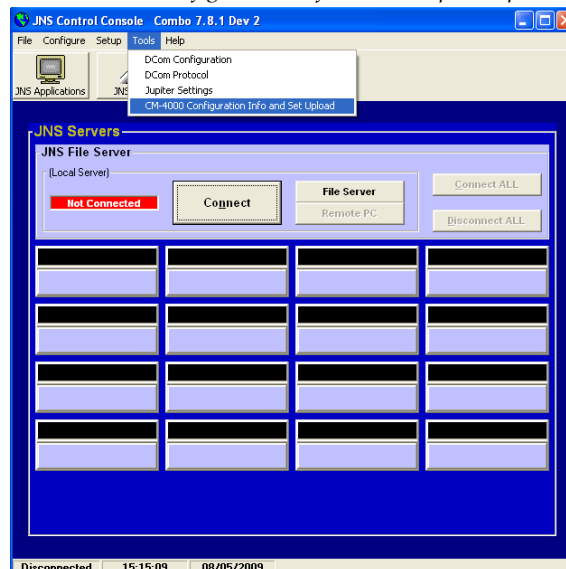
The Jupiter “Configuration Editor” is used to unzip, open, edit, and compile the Current or Previous sets.

Follow these steps to upload a Configuration File:

1. Run the Jupiter Network Suite (JNS) (For example, Start> Programs> Jupiter Network Suite).
2. Select the CM-4000 Configuration Info and Set Upload option (Tools> CM-4000 Configuration Info and Set Upload) from the JNS Console.

Note The Tools menu is only enabled when the JNS Servers are disconnected.

Figure 1. The CM-4000 Configuration Info and Set Upload option



The CM-4000 Configuration Information screen will then appear. Information for each active CM-4000 on the PC's subnet that is running is displayed.

- The current active configuration set will then be uploaded as `_Active.zip` and the previously active set will then be uploaded as `_Prev.zip`. A message will inform you when the available sets have been uploaded.

Unzipping, Opening, Editing, and Compiling the Configuration Set

Follow these steps to unzip, open, edit, and compile the current Configuration set:

- Start the Jupiter “Configuration Editor” and then open the Current Set (`_Active.zip`) or the Previous Set (`_Prev.zip`).
- Use the Save as (File> Save as) menu option to save the set to a preferred name.
- Make the changes, that is unzip, open, and edit.
- Save and then compile the Configuration set.

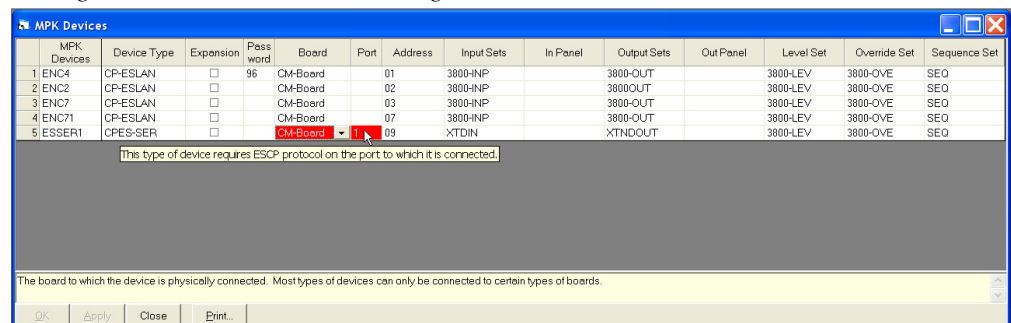
For more information about the Jupiter “Configuration Editor,” see the *CM- 4000 Control Module manual (part # 071826104)*.

Configuration Error Checking for the CPES-SER Device Type

The Jupiter Configurator application will now perform an error check for a proper configuration of a CPES-SER Device type.

When there is a Device type of CPES-SER in the MPK Devices Table; then the corresponding Port must be defined as an “ESCP (ES-Control Panel)” in the Serial Protocol Table. If this is not the case, then the Board and the Port in the MPK Devices Table will appear red (Figure 4).

Figure 4. Board and Port Error Message in the MPK Table



The following message will appear when you hold your mouse over the red colored area:

This type of device requires ESCP protocol on the port to which it is connected.

Router Options

Jupiter 7.8.1 now supports the following router options:

- Advise
- Enforce

(These options are used to provide point-to-point switching.)

The SAFE input

A "SAFE" input must be defined before a destination can be cleared. This input is defined by entering the word "safe" in all caps and adding two (2) spaces at the end of the word, in the Switcher Input table. For example:

```
"SAFE      "
```

Figure 5. "SAFE " in the Switcher Input Table

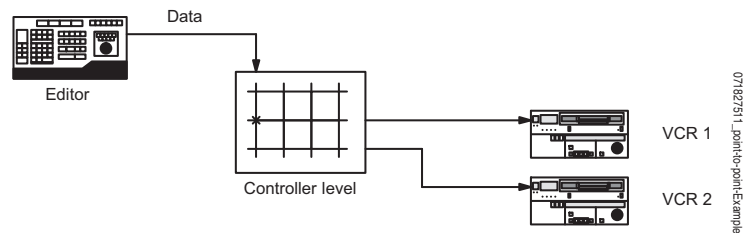
Switcher Input - MAINROUT					
	Logical Input Name	VIDEO	LEFT	RIGHT	TC
1	SAFE				000I
2	TONE	064I	000P	000P	000I

For more information about the Switcher Input table, see the Switcher Input Tables section of the *CM- 4000 Control Module manual* (part # 071826104).

Point-to-Point Switching

Point-to-point switching insures that a source can be switched to only one destination at a time (Figure 6).

Figure 6. Point-to-Point Switching Example



In the example above (Figure 6), VCR 1 is the only destination that is receiving data from the editor. The transmit data from an editor can only be switched to one VCR at a time.

Router Options

The router options are explained below:

Enforce: When the Enforce option is selected or turned on, the software will automatically switch the previous destination to the SAFE input. The control device would then be switched to a new destination.

Advise: When the Advise flag option is on and an attempt is made to switch control to a new device, the switch will not occur. The system will display the following message on the control panel in two lines if the selected source is used by another destination:

```
SRC in use
by: <Destination name>
```

The switch to a new device will not be executed until the destination that is using the source is either:

- Switched to a different source.
- Switched to the “SAFE” input.

This option will avoid having the control device connected to two machines at the same time.

Note The Advise and Enforce options do not work when you are using Sequences or Multiple-destination switching when the same source is being routed to more than one destination.

Force Unlock / Unprotect

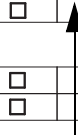
To help provide greater control, devices can now be configured to force unlock and force unprotect any destination regardless of what panel locked or protected it.

The locked or protected status must be canceled before a Take can be executed. See your panel’s manual for Lock and Protect steps.

The Force Unlock or Unprotect option is accomplished by entering “90” through “99” in the password column of the MPK Device table of the Jupiter configuration ([Figure 7](#)) for a specified panel.

Figure 7. Force Unprotect / Force Unlock Password

MPK Devices															
	MPK Devices	Device Type	Expansion	Password	Board	Port	Address	Input Sets	In Panel	Output Sets	Out Panel	Level Set	Override Set	Sequence Set	
1	CP1	CPES-SER	<input type="checkbox"/>	90	CM1	1	01	CP_IN		CPOUT		CP_LEV			
2	CP2	CPES-SER	<input type="checkbox"/>		CM1	1	02	CP_IN		CPOUT		CP_LEV			
⋮															
16	CP16	CPES-SER	<input type="checkbox"/>		CM1	1	16	CP_IN		CPOUT		CP_LEV			
17	CP17	CPESXTND	<input type="checkbox"/>		CM1		01	CP_IN		CPOUT		CP_LEV			



**Password Level: 90
and above**

In the example above (Figure 7), the CP1 device has “90” entered in the Password column. The CP1 device will now override any locked and protected destination.

Upgrading to 7.8.1

Caveats

Please read the following caveats before starting the upgrade procedure. During this upgrade procedure:

- All switcher status will be lost. To restore status, make note of the status of all outputs before starting the upgrade and re-take all switches. Or, you can use Router Save/Restore to restore status on Grass Valley (GV) routers.
- All memory on all Jupiter control system boards will be cleared after the installation and download process. The memory is cleared due to a mandatory “pmemclear” command.
- All configuration sets will need to be recompiled.

Equipment Required

GV-supplied PC 3000 (F7-029500-121) file server or a PC with the following minimum requirements:

- Windows XP SP2 (English version)
- 2 GHz Pentium processor
- 2 GB of RAM
- 125 MB of Hard disk space for the Jupiter application
- Intel or 3Com Ethernet LAN card
- Keyboard and mouse

A minimum resolution of 1280 X 1024 and 32 -bit color PC monitor setting is recommended for proper display of the Jupiter Soft Panel and VSD screens. The Appearance font size on the Display Properties dialog (Control Panels> Display> Appearance: Font size drop-down list) should be set to Normal. Selecting either the *Large* or the *Extra Large Fonts* option will cause application display problems.

Software Required

Installation of the Jupiter 7.8.1 release is only supported on the English version of Windows XP Professional SP2 or later. Windows Firewall and any Anti-Virus Firewall must be disabled to allow the Bootp, TFTP, and JNS applications to operate properly.

Materials Supplied

The information shown below in the following tables are supplied with the release.

Jupiter Software upgrade for:

JUP-SW 2500 (Jupiter LE for VM/SI-3000), or

JUP-SW 3100 (Jupiter Plus for VM-SI-3000), or

JUP-SW 3500 (Jupiter XPress for CM-4000):

QTY	Description	Part number
1	Software, CD, Jupiter v7.6.1	063809312
1	Release Notes	071827508

-OR-

Jupiter Software upgrade for:

JUP-SW 4000 (Jupiter AccuSwitch for CM-4000):

QTY	Description	Part number
1	Software, CD, Jupiter v7.9.0	063809313
1	Software, CD, NetConfig 2.0.9 and L, S, and LCD Panels 2.0 Code	063829603
1	Release Notes	071827511

Optional Materials

The following manuals and optional software are also available:

- Application specific software licenses (refer to Section 1 of the Jupiter Installation and Operating manuals for more information)
- Jupiter VM/SI-3000 Installation and Operating Manual (VM-3000), part number- 0718305xx.
- Jupiter CM-4000 Installation and Operating Manual, part number- 0718261xx.
- L, S, and LCD Series Jupiter Control Panels Manual, part number- 0718536xx. (Manual available online-contact Technical Support for more information.)
- AccuSwitch Soft Panels and Visual Status Display, part number - 8630168X

Software Update

CAUTION During the software update your Jupiter system will be taken off-line for a short time while the control boards (CM-4000) are updated. Existing matrix cross-points will remain selected, but source to destination changes will not be possible while the control boards are off-line.

Contact Grass Valley Customer Support if you have any questions regarding this software update.

Note Read these instructions carefully and follow all the steps exactly to help ensure that your update goes smoothly.

Update Only Existing Jupiter Systems

This procedure is for updating an existing Jupiter system that has been previously installed, completely configured, and is operating correctly. New Jupiter systems ship from the factory with the latest version of software pre-installed. New systems do not need their software updated. However, new Jupiter systems will need to be configured to operate at your facility.

Installing the Jupiter Software Components

Updating a Previous Installation

The update procedure is a two-step process. The first step will be to remove the previous version of the Jupiter software. The second step will then start the installation of the latest version of the application.

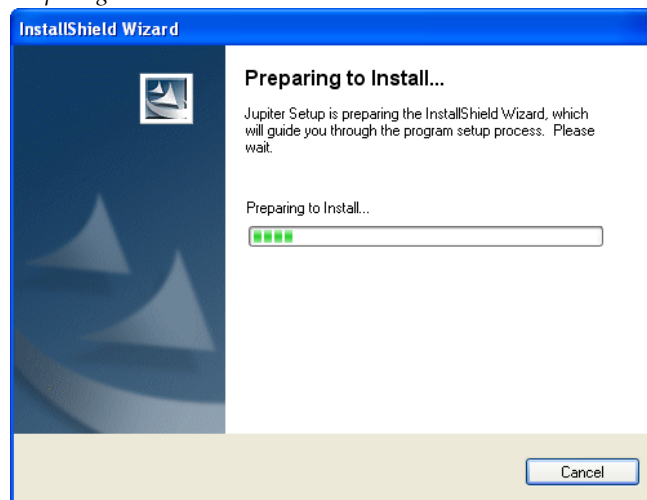
Removing the Previous Version

The Installation program will check to see if an earlier version of Jupiter is installed on the computer. The earlier version will be removed before the latest version will be installed. You will need to start the Installation program again after the earlier version has been removed.

To start the update process and remove the previous version:

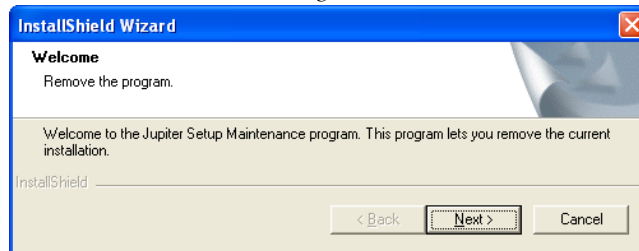
1. Insert the Jupiter System Software CD into the PC. If the Installation Program doesn't start up automatically, double-click the **Setup.exe** icon on the CD. The Preparing to Install screen will then be displayed (Figure 8).

Figure 8. Preparing to Install Screen



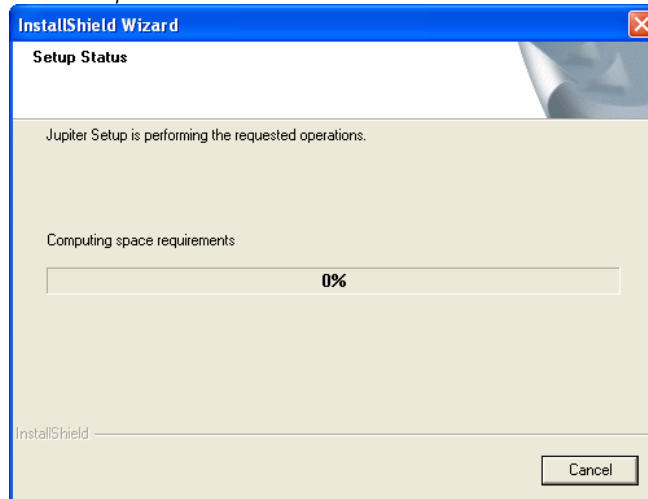
The Welcome - Remove the program screen will then appear after a few minutes (Figure 9).

Figure 9. Welcome - Remove the Program Screen



2. Click the **Next>** button. The Setup Status screen will then appear (Figure 10).

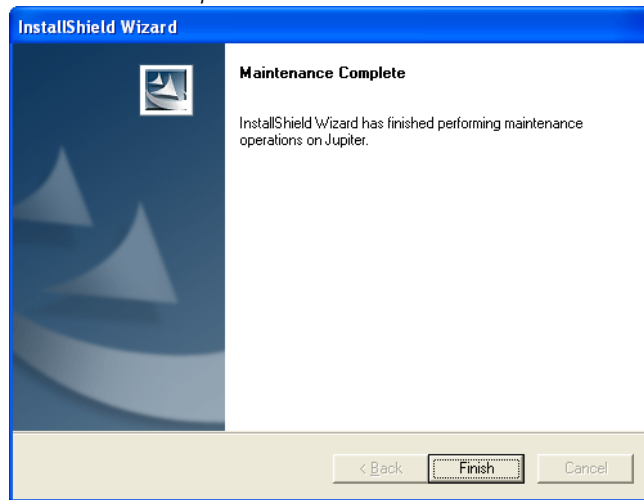
Figure 10. Setup Status Screen



The previous version of the application will then be removed.

When the removal of the application has been completed, the Maintenance Complete screen will then appear (Figure 11).

Figure 11. Maintenance Complete Screen



3. Click the **Finish** button. The InstallShield Wizard application will then close.

You can now install the latest version of Jupiter.

Installing the Latest Version

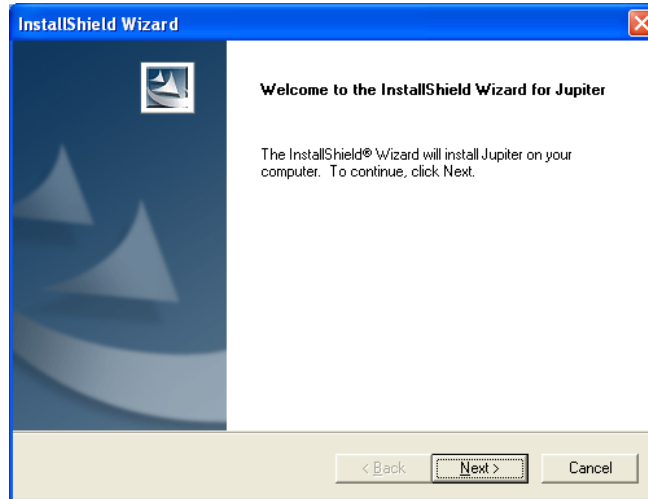
Note To help ensure any hidden activity is stopped you should restart the computer.

Before you begin the installation process, make sure that you close all Jupiter programs on the configuration PC and disable any virus protection programs or firewalls.

Follow these steps to start a new installation Process:

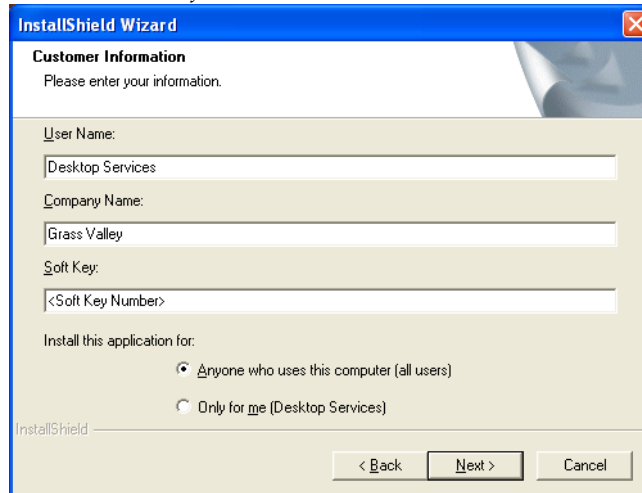
1. Insert the Jupiter System Software CD into the PC. If the Installation Program doesn't start up automatically, double-click the **Setup.exe** icon on the CD. The Jupiter Installation Welcome screen will then be displayed (Figure 12).

Figure 12. Jupiter Installation Welcome Screen



2. Click the **Next >** button. The Customer Information screen will then appear (Figure 13).

Figure 13. Customer Information



3. Enter your User Name, Company Name, and the Soft Key in their respective fields.

Note The Soft key can be found on the plastic case that the Jupiter CD was shipped with.

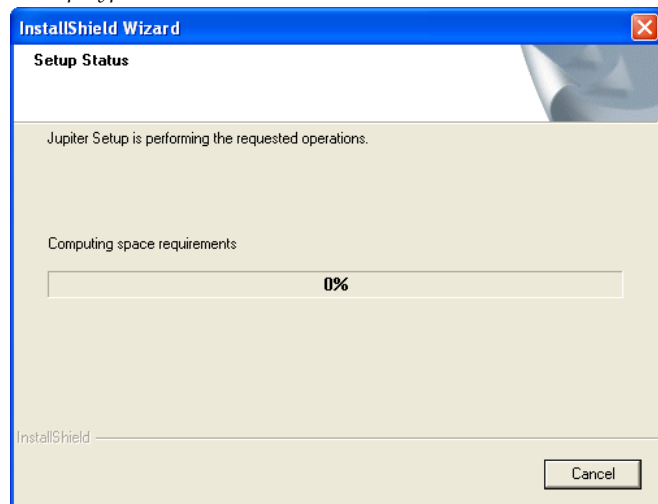
4. Select the **Anyone who uses this computer (all users)** radio button.
5. Click the **Next >** button. The Software License Agreement screen will then appear (Figure 14).

Figure 14. License Agreement



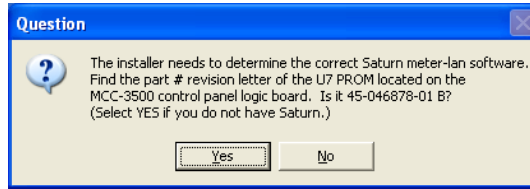
6. Click the **Yes** button to accept the license agreement. The Setup Type screen will then appear (Figure 15).

Figure 15. Setup Type Screen



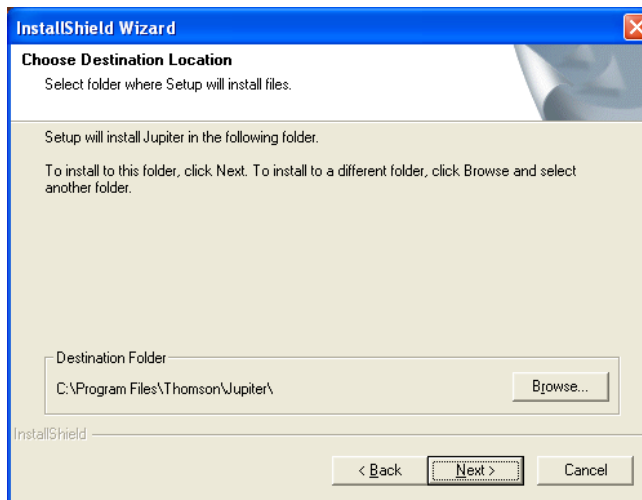
7. Select the preferred type of installation and then click the **Next >** button. The Question dialog will then appear (Figure 16). You will need the Part Number Revision letter on the MCC-3500 Control Panel Logic board. For example, in figure below the part number is correct.

Figure 16. Question Screen



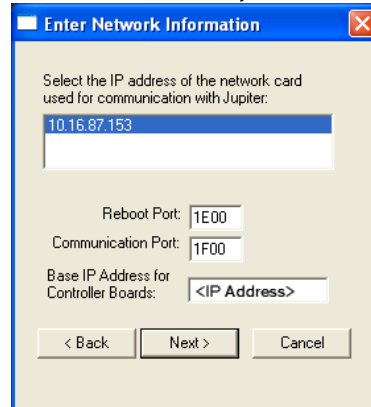
8. Click the **Yes** button if the letter is correct or if you are not using the Saturn Master Control system. The Choose Destination location screen will then appear (Figure 17).

Figure 17. Choose Destination Location Screen



9. Browse to the Destination folder of your choice and then click the **Next >** button. The Enter Network Information dialog will then appear (Figure 18).

Figure 18. Enter Network Information Screen



10. Select the IP address for the Network card that will communicate with the Jupiter system.

Note Consult with your Network administrator if you do not know the network values to enter.

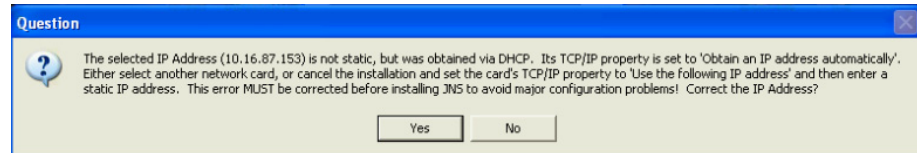
- If there is more than one Network card installed, all the cards appear in the dialog window.
- Enter the Port information in the respective fields

11. Enter the IP address for the Controller boards in the required field and then click the **Next>** button.

Using DHCP

If you are using DHCP, that is your IP address is not static, you will see the following Question dialog (Figure 19).

Figure 19. Question Dialog



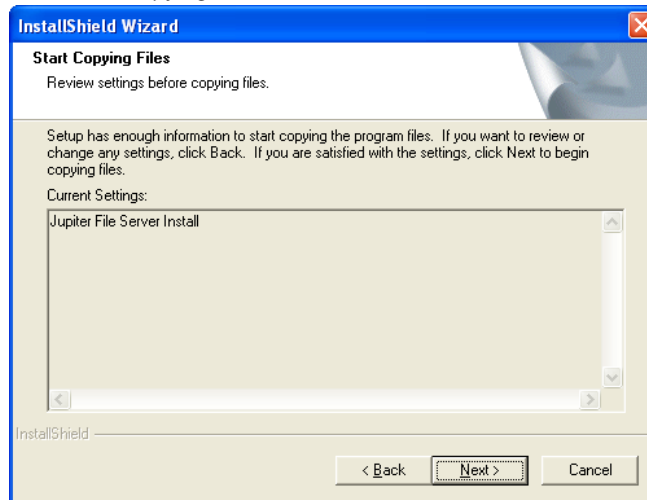
Note It is strongly recommended that you use a Static IP address. Using DHCP may cause configuration problems.

If you want to correct the IP address, click the **Yes** button. The Choose Destination Location screen will then appear.

Using a Static IP Address

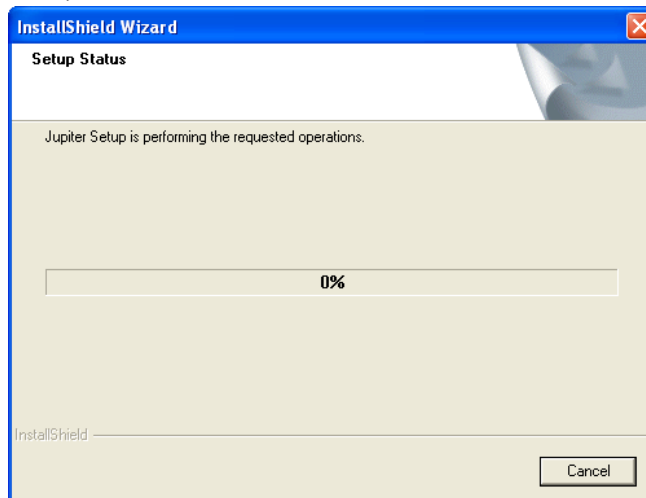
The Start Copying Files screen will appear (Figure 20).

Figure 20. Start Copying Files Screen



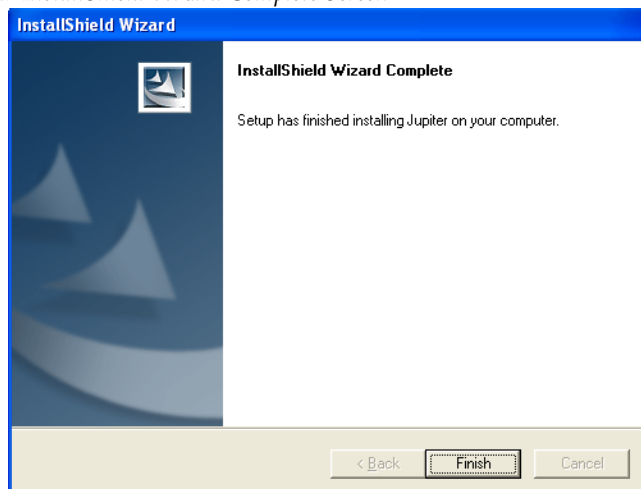
1. Review the Current Settings and then click the **Next>** button. The Setup Status screen will then appear (Figure 21).

Figure 21. Setup Status Screen



When the Installation process is completed the InstallShield Wizard Complete screen will then appear (Figure 22).

Figure 22. InstallShield Wizard Complete Screen



2. Click the **Finish** button. The installation process is now completed.