



JUPITER

CONTROL SYSTEM

Release Notes
Software Version 7.9.0



Affiliate with the N.V. KEMA in The Netherlands



CERTIFICATE

Certificate Number: 510040.001

The Quality System of:

Thomson Inc, and it's worldwide Grass Valley division affiliates DBA GRASS VALLEY

Headquarters
400 Providence Mine Rd
Nevada City, CA 95959
United States

15655 SW Greystone Ct.
Beaverton, OR 97006
United States

10 Presidential Way
Suite 300
Woburn, MA 01801
United States

Kapittelweg 10
4827 HG Breda
The Netherlands

7140 Baymeadows Way
Ste 101
Jacksonville, FL 32256
United States

2300 So. Decker Lake Blvd.
Salt Lake City, UT 84119
United States

Rue du Clos Courtel
CS 31719
35517 Cesson-Sevigné Cedex
France

1 rue de l'Hautil
Z.I. des Boutries BP 150
78702 Conflans-Sainte
Honorine Cedex
France

Technopole Brest-Iroise
Site de la Pointe du Diable
CS 73808
29238 Brest Cedex 3
France

40 Rue de Bray
2 Rue des Landelles
35510 Cesson Sevigné
France

Spinnereistrasse 5
CH-5300 Turgi
Switzerland

Brunnenweg 9
D-64331 Weiterstadt
Germany

Carl-Benz-Strasse 6-8
67105 Schifferstadt
Germany

Including its implementation, meets the requirements of the standard:

ISO 9001:2008

Scope:

The design, manufacture and support of video and audio hardware and software products and related systems.

This Certificate is valid until: June 14, 2012
This Certificate is valid as of: June 14, 2009
Certified for the first time: June 14, 2000

H. Pierre Sallé
President
KEMA-Registered Quality

The method of operation for quality certification is defined in the KEMA General Terms And Conditions For Quality And Environmental Management Systems Certifications. Integral publication of this certificate is allowed.

KEMA-Registered Quality, Inc.
4377 County Line Road
Chalfont, PA 18914
Ph: (215)997-4519
Fax: (215)997-3809

Accredited By:
ANAB

Experience you can trust.



JUPITER

CONTROL SYSTEM

Release Notes
Software Version 7.9.0

Contacting Grass Valley

International Support Centers	France 24 x 7	+800 8080 2020 or +33 1 48 25 20 20	United States/Canada 24 x 7	+1 800 547 8949 or +1 530 478 4148
Local Support Centers (available during normal business hours)	Asia	Hong Kong, Taiwan, Korea, Macau: +852 2531 3058 Indian Subcontinent: +91 22 24933476 Southeast Asia/Malaysia: +603 7805 3884 Southeast Asia/Singapore: +65 6379 1313 China: +861 0660 159 450 Japan: +81 3 5484 6868		
		Australia and New Zealand: +61 1300 721 495	Central/South America: +55 11 5509 3443	
		Middle East: +971 4 299 64 40 Near East and Africa: +800 8080 2020 or +33 1 48 25 20 20		
	Europe	Belarus, Russia, Tadzikistan, Ukraine, Uzbekistan: +7 095 2580924 225 Switzerland: +41 1 487 80 02 S. Europe/Italy-Roma: +39 06 87 20 35 28 -Milan: +39 02 48 41 46 58 S. Europe/Spain: +34 91 512 03 50 Benelux/Belgium: +32 (0) 2 334 90 30 Benelux/Netherlands: +31 (0) 35 62 38 42 1 N. Europe: +45 45 96 88 70 Germany, Austria, Eastern Europe: +49 6150 104 444 UK, Ireland, Israel: +44 118 923 0499		

Copyright © Grass Valley, Inc. All rights reserved.
This product may be covered by one or more U.S. and foreign patents.

Grass Valley Web Site

The www.grassvalley.com web site offers the following:

Online User Documentation — Current versions of product catalogs, brochures, data sheets, ordering guides, planning guides, manuals, and release notes in .pdf format can be downloaded.

FAQ Database — Solutions to problems and troubleshooting efforts can be found by searching our Frequently Asked Questions (FAQ) database.

Software Downloads — Download software updates, drivers, and patches.



END-OF-LIFE PRODUCT RECYCLING NOTICE

Grass Valley's innovation and excellence in product design also extends to the programs we've established to manage the recycling of our products. Grass Valley has developed a comprehensive end-of-life product take back program for recycle or disposal of end-of-life products. Our program meets the requirements of the European Union's WEEE Directive, the United States Environmental Protection Agency, and U.S. state and local agencies.

Grass Valley's end-of-life product take back program assures proper disposal by use of Best Available Technology. This program accepts any Grass Valley branded equipment. Upon request, a Certificate of Recycling or a Certificate of Destruction, depending on the ultimate disposition of the product, can be sent to the requester.

Grass Valley will be responsible for all costs associated with recycling and disposal, including freight. However, you are responsible for the removal of the equipment from your facility and packing the equipment to make it ready for pickup.



For further information on the Grass Valley product take back system please contact Grass Valley at + 800 80 80 20 20 or +33 1 48 25 20 20 from most other countries. In the U.S. and Canada please call 800-547-8949 or 530-478-4148, and ask to be connected to the EH&S Department. Additional information concerning the program can be found at: www.thomsongrassvalley.com/environment



Contents

JUPITER Release Notes	7
Introduction	7
New Features in Jupiter Release 7.9.0 AccuSwitch	7
Support for the CM-4400	7
Setting the Subnet Mask and Gateway IP Addresses	8
Pro-Bel SW-P-08 Protocol	9
Jupiter Router Control	9
Entering Serial Protocol Information	9
Entering MPK information	11
Pro-Bel SW-P-08 Protocol Commands	11
Remote Router Control	12
Remote Router Values	13
Entering Serial Protocol information	14
Pro-Bel SW-P-08 Interface Implementation Notes	16
P8R (SW-P-08 Router Control)	16
P08 (SW-P-08 Control Panel)	17
Physical Serial Interface	18
Remote PC Access is No Longer Supported	19
Spanning Tree Protocol	20
Upgrading to 7.9.0	21
Caveats	21
Equipment Required	21
Software Required	21
Materials Supplied	22
Optional Materials	22
Software Update	22
Update Only Existing Jupiter Systems	23
Installing the Jupiter Software Components	24
Updating a Previous Installation	24
Removing the Previous Version	24
Installing the Latest Version	26

JUPITER Release Notes

Introduction

This document describes new product enhancements that are provided in the 7.9.0 version of the Jupiter Control system. The installation procedure that should be used to upgrade a Jupiter system to the 7.9.0 version is also described in this document (See the [Upgrading to 7.9.0](#) section).

Note This release only supports the English version of the Windows XP Professional Operating system.

New Features in Jupiter Release 7.9.0 AccuSwitch

The 7.9.0 version of the Jupiter AccuSwitch Control system software has the following enhancements and changes:

- Support for the CM-4400.
- Pro-Bel SW-P-08 Protocol.
- The Remote PC feature is no longer supported.

These features provide customers with improved control, convenience, and flexibility when connecting and using Jupiter's control panels.

Each of these features is described in detail below.

Support for the CM-4400

The 7.9.0 version of Jupiter supports the CM-4400, which is the new hardware platform for the AccuSwitch software.

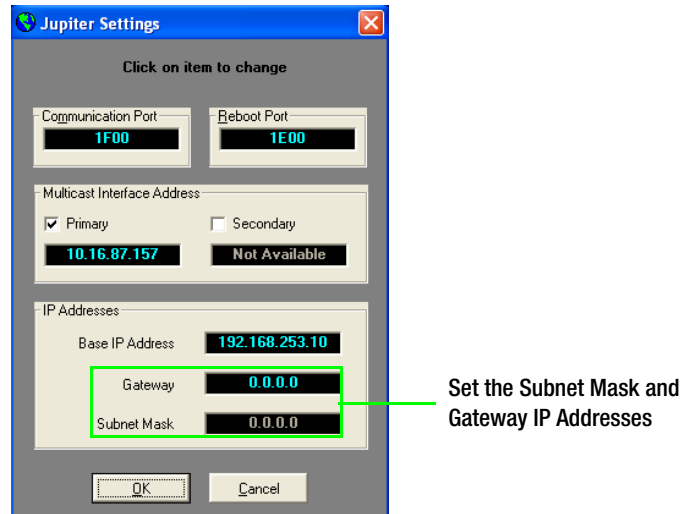
You must set the Subnet Mask and Gateway IP addresses to run the 7.9 version of Jupiter on the CM-4400; these settings are not required on the CM-4000.

Setting the Subnet Mask and Gateway IP Addresses

Follow these steps to set the Subnet Mask and Gateway IP addresses:

1. Open the Jupiter Network Suite (JNS).
2. Select the Jupiter Settings option from the Tools menu (Tools> Jupiter Settings). The Jupiter Settings dialog will then appear.

Figure 1. The Jupiter Settings Dialog



3. Enter the Subnet Mask and Gateway IP Addresses for your system. See your System Administrator for this information.

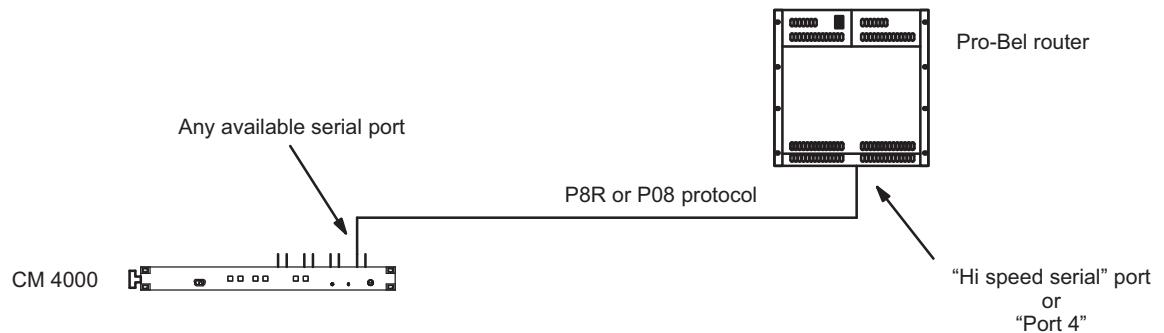
Note Grass Valley recommends that you enter the IP address of your Jupiter PC and use 255.255.255.0 for the Subnet Mask if there is no Gateway. However, only enter this information if your System Administrator does not provide the needed information.

4. Click the **Ok** button to apply the changes.

Pro-Bel SW-P-08 Protocol

The 7.9.0 version of the Jupiter system supports two new protocol drivers, for AccuSwitch, that implement parts of the Pro-Bel SW-P-08 protocol. The first driver is implemented as a standard Remote Router control interface. The second driver is implemented as an Automation, or as a Control panel, interface.

Figure 2. Pro-Bel SW-P-08 Router Switcher Setup



This section will describe the needed setup and configuration steps to use the Pro-Bel SW-P-08 protocol for:

- Jupiter Router control
- Remote Router control

Jupiter Router Control

You will need to configure the Jupiter CM-4000 or CM-4400 to use a Pro-Bel SW-P-08 Router Control port. This is accomplished by adding entries in the Serial Protocol and MPK Devices tables.

For steps to configure a CM-4000 or CM-4400 or modifying, compiling, and validating a configuration set, see the CM 4000 Control Module or the CM-4400 Control Module manuals.

Note These steps assume that the CM-4000 or CM-4400 has been configured properly.

Entering Serial Protocol Information

You may need to modify the Configuration set that is currently active; if so, Grass Valley recommends that you make a copy for editing before making these changes.

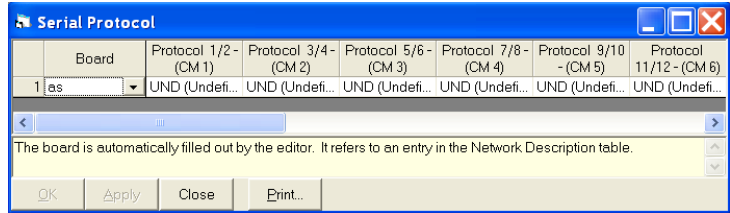
For more information about modifying the Configuration set, please see the *CM-4000 or CM-4400 Control Module manuals*.

Note On the Title bar of the Jupiter Configurator application you will see the name of the Configuration set. Make sure that the configuration set that is opened is the correct set that you want to change.

Follow these steps to enter or modify the Serial Protocol table:

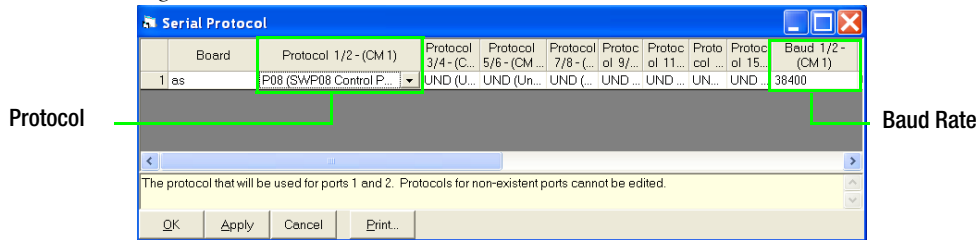
1. Select the Serial Protocol option from the Jupiter menu (Jupiter > Serial Protocol). The Serial Protocol table will then open (Figure 3).

Figure 3. Example of the Serial Protocol Table



2. Double-click the protocol box that is associated with the Serial port. A drop-down list will show the possible protocol types.
3. Select the P08 (SW-P-08 Control Panel) protocol.
4. Click anywhere else in the table to close the entry. The default Baud rates will be selected automatically; however, the Baud rate may be changed by clicking the drop down menu (Figure 4).

Figure 4. The P08(SW-P-08 Control Panel) Protocol on The Serial Protocol Table



5. Click the **Apply** button and then save your changes.

Note The serial line parameters are:

- 38400 Baud
- 8 data bits
- No parity
- 1 stop bit
- The baud rate is adjustable

Entering MPK information

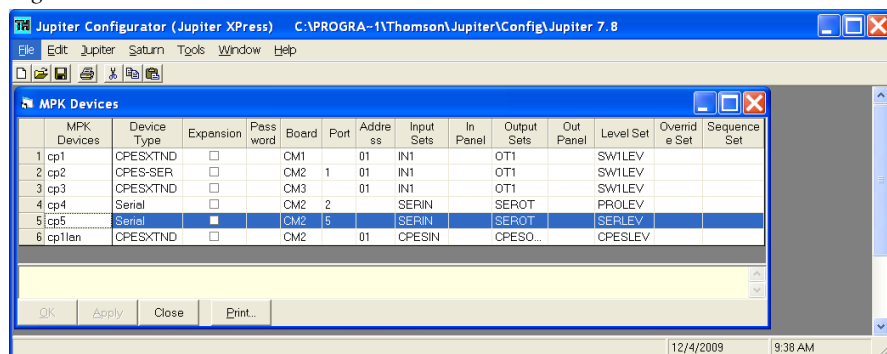
You will need to make entries in the MPK Devices table for the port to associate the Input, Output and Level sets. The Device Type is Serial with a Serial Input and an Output set. The level type is cp3000.

Note These steps assume that a Serial Input set, Output set, and a Level set have already been configured. For steps to configure a CM-4000 or CM-4400 see the *CM-4000 or CM-4400 Control Module manuals*.

Follow these steps to enter or modify the MPK table:

1. Select the MPK Devices option from the Jupiter menu (Jupiter> MPK Devices). The MPK Devices table will then open.
2. Enter a name in the MPK Devices column.
3. Click the Device Type drop-down list and then select the Serial option.
4. Click the Board drop-down list and then select the preferred board.
5. Enter the Port number in the Port column.
6. Select the Input Sets drop-down list and then select the preferred Serial input set.
7. Select the Output Sets drop-down list and then select the preferred Serial Output set.
8. Select the Level Sets drop-down list and then select the preferred Serial Level set.
9. Click the **Apply** button and then save your changes (See line #5 in [Figure 5](#)).

Figure 5. MPK Device Table



MPK Devices	Device Type	Expansion	Pass word	Board	Port	Address	Input Sets	In Panel	Output Sets	Out Panel	Level Set	Overrid e Set	Sequence Set
1 cp1	CPESXTND	<input type="checkbox"/>		CM1	01	IN1			OT1		SWILEV		
2 cp2	CPES-SER	<input type="checkbox"/>		CM2	1	01	IN1		OT1		SWILEV		
3 cp3	CPESXTND	<input type="checkbox"/>		CM3	01	IN1			OT1		SWILEV		
4 cp4	Serial	<input type="checkbox"/>		CM2	2		SERIN		SEROT		PROLEV		
5 cp5	Serial	<input checked="" type="checkbox"/>		CM2	5		SERIN		SEROT		SERLEV		
6 cp1lan	CPESXTND	<input type="checkbox"/>		CM2	01	CPESIN			CPESO...		CPESLEV		

Pro-Bel SW-P-08 Protocol Commands

This section provides the command, and a description for the commands, that are implemented to interface with a Studer Router switcher using the

Pro-Bel Pro-Bel SW-P-08 protocol. Both the normal and extended Pro-Bel commands are supported.

You should be familiar with the Pro-Bel SW-P-08 commands before using this information.

Table 1. Pro-Bel Pro-Bel SW-P-08 Protocol Commands

Command	Description
Crosspoint Interrogate	This command responds with a Crosspoint Tally message.
Crosspoint Connect	This command responds with a Crosspoint Connected message. In addition Jupiter accepts Crosspoint Connected messages and converts them into Crosspoint Connect messages except that there is no further status response. This was done to update the Jupiter status from status messages sent from the Studer interface.
SingleSourceNameRequest	This command responds with a SourceNamesResponse message. The Jupiter name length is 8 characters but the protocol implementation supports all the Pro-Bel lengths (FourChar, EightChar, and TwelveChar).
SingleDestinationAssociation-NamesRequest	This command responds with a DestinationAssociationNamesResponse message.

Remote Router Control

Note You will need a specific Jupiter license key to enable the P08R option in the Driver column of the Switcher Description table.

This interface will send the Crosspoint Connect message and will wait for a matching Crosspoint Connected message to confirm the switch.

Pro-Bel's Extended Crosspoint Connect and Extended Connected commands are used when there are more than 1023 inputs or outputs.

Determining the Protocol Matrix and Level

When a Third-Party switcher of this type and a Grass Valley Crosspoint Bus switcher are entered on the Switcher Description table, an offset of 100 can be used to avoid having the same level numbers for both switchers. For example, if you have two switchers, an Alpha Image and a Datatek.

- A hardware level setting of "0" on the Alpha Image switcher could be entered on the Switcher Description table as "100." If the Pro-Bel remote router also uses level "0," it would be entered as "200" in the PLvl field.
- A hardware Level setting of "1" on the Datatek switcher could be entered on this table as "101."

This offset eliminates the need to re-set existing level settings on the hardware.

The Protocol matrix and Level are both set by the Jupiter system's Physical level value, which ranges from 0 to 99. The matrix is the physical level

(PLvl) divided by 16. The protocol level is the remaining physical level value from 16. The physical level is found on the Jupiter CM's Switcher Description table.

For example, in [Figure 6](#) the Physical level value on row 7 is 102.

Figure 6. Physical Level on the Switcher Description Table

Switcher	Level	V1	RV	MC	Board	#In	#Out	PLvl	Follow Level	Driver	Option 1	Option 2	Data Options	Audio	DM400 Off Time
1 sw1	video	<input checked="" type="checkbox"/>	<input type="checkbox"/>	<input type="checkbox"/>	CM1	512	512	7		Bin Confirm All				<None>	
2 sw1	left	<input checked="" type="checkbox"/>	<input type="checkbox"/>	<input type="checkbox"/>	CM1	512	512	2		Bin Confirm All				<None>	
3 sw1	right	<input checked="" type="checkbox"/>	<input type="checkbox"/>	<input type="checkbox"/>	CM1	512	512	6		Bin Confirm All				<None>	
4 sw1	tc	<input checked="" type="checkbox"/>	<input type="checkbox"/>	<input type="checkbox"/>	CM1	512	512	3		Bin Confirm All				<None>	
5 sw2	video	<input type="checkbox"/>	<input type="checkbox"/>	<input type="checkbox"/>	CM2	512	512	3		Alpha				<None>	
6 sw2	left	<input checked="" type="checkbox"/>	<input checked="" type="checkbox"/>	<input checked="" type="checkbox"/>	CM2	2048	2048	101		SWP08				<None>	
7 sw2	right	<input checked="" type="checkbox"/>	<input checked="" type="checkbox"/>	<input checked="" type="checkbox"/>	CM2	2048	2048	102		SWP08				<None>	
8 sw2	tc	<input checked="" type="checkbox"/>	<input type="checkbox"/>	<input type="checkbox"/>	CM2	512	512	1		Bin Confirm All				<None>	
9 sw3	gnp	<input type="checkbox"/>	<input type="checkbox"/>	<input type="checkbox"/>	CM2	1024	1024	201		GNP(GVG Na...				<None>	
10 sw3	gnp2	<input type="checkbox"/>	<input type="checkbox"/>	<input type="checkbox"/>	CM2	64	64	202		GNP(GVG Na...				<None>	

All values over 100 are offset by 100; hence, the Physical level value would be 2. In this example the Protocol matrix value is: 0

For more information see [Table 2](#).

Remote Router Values

As stated earlier, all Remote-Router Physical level values are offset. The Pro-Bel SW-P-08 remote router physical level value is offset by 100. The following table shows the Matrix and Level values for a given PLVL.

Table 2. Remote Router Values for Physical Level(0 - 99), Matrix, and Level

PLvl	Matrix	Level	PLvl	Matrix	Level	PLvl	Matrix	Level
0	0	0	36	2	4	72	4	8
1	0	1	37	2	5	73	4	9
2	0	2	38	2	6	74	4	10
3	0	3	39	2	7	75	4	11
4	0	4	40	2	8	76	4	12
5	0	5	41	2	9	77	4	13
6	0	6	42	2	10	78	4	14
7	0	7	43	2	11	79	4	15
8	0	8	44	2	12	80	5	0
9	0	9	45	2	13	81	5	1
10	0	10	46	2	14	82	5	2
11	0	11	47	2	15	83	5	3
12	0	12	48	3	0	84	5	4
13	0	13	49	3	1	85	5	5

Table 2. Remote Router Values for Physical Level(0 - 99), Matrix, and Level

PLvl	Matrix	Level	PLvl	Matrix	Level	PLvl	Matrix	Level
14	0	14	50	3	2	86	5	6
15	0	15	51	3	3	87	5	7
16	1	0	52	3	4	88	5	8
17	1	1	53	3	5	89	5	9
18	1	2	54	3	6	90	5	10
19	1	3	55	3	7	91	5	11
20	1	4	56	3	8	92	5	12
21	1	5	57	3	9	93	5	13
22	1	6	58	3	10	94	5	14
23	1	7	59	3	11	95	5	15
24	1	8	60	3	12	96	6	0
25	1	9	61	3	13	97	6	1
26	1	10	62	3	14	98	6	2
27	1	11	63	3	15	99	6	3
28	1	12	64	4	0			
29	1	13	65	4	1			
30	1	14	66	4	2			
31	1	15	67	4	3			
32	2	0	68	4	4			
33	2	1	69	4	5			
34	2	2	70	4	6			
35	2	3	71	4	7			

The above table will start over after 100.

Entering Serial Protocol information

The steps to configure Jupiter for Remote router control are similar to the steps to control Jupiter. That is, adding entries in the Serial Protocol table.

Note These steps assume that the CM-4000 or CM-4400 has been configured properly.

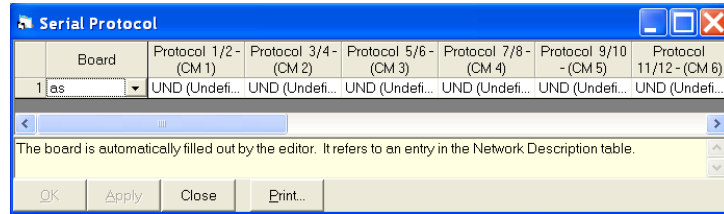
In most cases, you will need to modify the Serial Protocol set that is currently active; if so, Grass Valley recommends that you a copy for editing. For more information, please see the *CM-4000 or CM-4400 Control Module*.

Note On the top of the Jupiter Configurator window on the title bar, you will see the name of the Configuration set. Ensure that the configuration set that is opened is the one that you want to change.

Follow these steps to enter or modify the Serial Protocol table:

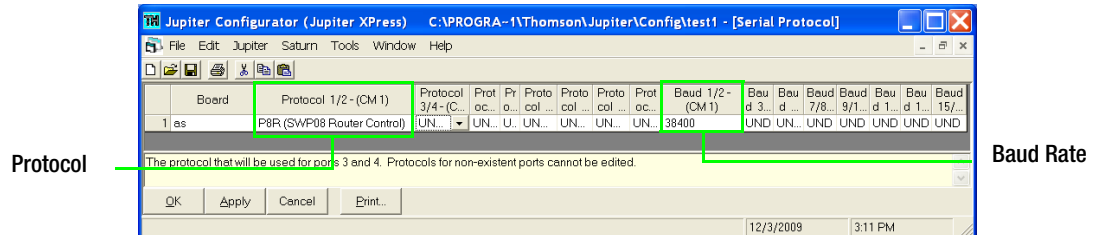
1. Select the Serial Protocol option from the Jupiter menu (Jupiter> Serial Protocol). The Serial Protocol table will then open ([Figure 3](#)).

Figure 7. Example of the Serial Protocol Table



2. Double-click the protocol box that is associated with the Serial port. A drop-down list will show the possible protocol types.
3. Select the P8R (SW-P-08 Router Control) protocol.
4. Click anywhere in the table accept the entry. The Baud rates will be selected automatically (Figure 4). The Baud rate can be changed by clicking the drop-down list in the Baud rate column.

Figure 8. The P8R (SW-P-08 Router Control) Protocol on The Serial Protocol Table



5. Click the **Apply** button and then save your changes.
6. Compile and activate the Configuration set.

Pro-Bel SW-P-08 Interface Implementation Notes

P8R (SW-P-08 Router Control)

The P8R (SW-P-08 Router Control) driver will send the following:

Table 3. P8R(SW-P-08 Router Control) driver Sent Information

Message	Value
CONNECT	2 (matrix=pLvl/16, level =pLvl%16 input < 1024 output < 1024)
CONNECT_EXT	130 (depending on the input and output >= 1024)

This P8R (SW-P-08 Router Control) driver will receive the following:

Table 4. P8R(SW-P-08 Router Control) driver Received Information

Message	Value
CONNECTED	4
CONNECTED_EXT	132

When the P8R (SW-P-08 Router Control) driver is used, the following will occur:

- The Commands that are not extended will truncate the Matrix and the Level values to a 4 bit value. The Level value in the PLvl column of the Switcher Description Table is converted into a unique Level value between 0 and 100 (0 - 0x63).
- The Physical level (PLvl) value is then converted into a Pro-Bel SW-P-08 Matrix and Level value. The Pro-Bel SW-P-08 level value is from 0 to 15 and the Pro-Bel SW-P-08 matrix value is from 0 to 6, which is the physical level divided by 16.
- A Jupiter system TAKE command will send a Pro-Bel CONNECT message, which is confirmed when a CONNECTED message is received immediately following the CONNECT message.
- The interface will re-send a CONNECT message up to three more times after an error or if the CONNECTED response is not what was expected to confirm the TAKE command.
- The protocol ACKS all messages that are received correctly even if they are not implemented.

P08 (SW-P-08 Control Panel)

The P08 (SW-P-08 Control Panel) driver will receive the following:

Table 5. P08 (SW-P-08 Control Panel) Received Information

Message	Value
CONNECT	2
CONNECT_EXT	130
INTERROGATE	1
INTERROGATE_EXT	129
CONNECTED	4
CONNECTED_EXT	132
Single source name request	101
Single destination name request	103
Single source name extended	229
Single destination name extended	231

The P08 (SW-P-08 Control Panel) sends the following:

Table 6. P08 (SW-P-08 Control Panel) Sent Information

Message	Value
TALLY	3
TALLY_EXT	131
CONNECTED	4
CONNECTED_EXT	132
Source name response	106
Destination name response	107
Source name response extended	234
Destination name response extended	235

When the P08 (SW-P-08 Control Panel) driver is used, the following will occur:

- The control panel level value is a combination of the Pro-Bel SW-P-08 matrix and level values. The level is the matrix times 16 plus the level.
- The interface ACKS all messages that are received correctly even if they are not implemented.
- The system responds to a CONNECT message with a CONNECTED message only when the cross point is valid. Unsolicited CONNECTED messages will be sent for confirmed TAKES to outputs in the control panel set.

Commands are repeated up to 3 times when a NAK (error) occurs.

Physical Serial Interface

This section describes the pins of the Serial cable. The two Tables ([Table 7](#) and [Table 8](#)) describe the configuration.

Figure 9. Serial Cable Pin-out



071827512_Probell-Serial connections

Table 7. Control Module RS-422/485 Female 9 pin Configuration

Pin #	Configuration
1	GND
2	RX-
3	TX+
7	RX+
8	TX-

Table 8. PC RS-232 Male DTE pin Configuration

Pin #	Configuration
5	GND
2	RXD
3	TXD

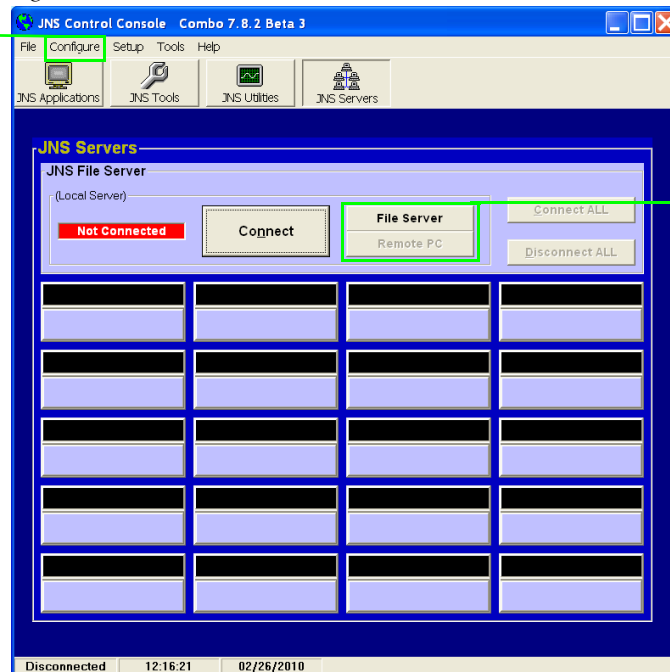
Remote PC Access is No Longer Supported

The Remote PC feature is no longer supported in Jupiter version 7.8.2 and may not work as desired due to changes in the Microsoft Windows operating system. Grass Valley has no control over the changes Microsoft implements. Furthermore, Grass Valley assumes no responsibility or liability for any continued use of this feature; the user of this feature assumes all risk and liability including, without limitation, lost profits, business interruption, or lost information.

The Configure menu and the **File Server/Remote PC** button was removed in the 7.8.2 version of Jupiter, this feature was reinstated to the JNS Control Console in the 7.9.0 version.

Figure 10. The JNS Control Console

The Configure menu has been reinstated



The File Server/Remote PC button has been reinstated

Spanning Tree Protocol

The Spanning Tree protocol is not supported in Jupiter and should be disabled or have Rapid Spanning Tree Protocol (RSTP) enabled. All ports should be configured to the auto-negotiate mode.

Using the Spanning Tree protocol will cause port latency on the switch when a device reboots and this will cause Jupiter network problems.

Grass Valley assumes no responsibility or liability for use of the Spanning Tree protocol; the user of this protocol must assume all risk and liability as mentioned previously in *Remote PC Access is No Longer Supported* [on page 19](#).

Upgrading to 7.9.0

Caveats

Please read the following caveats before starting the upgrade procedure. During this upgrade procedure:

- All switcher status will be lost. To restore status, make note of the status of all outputs before starting the upgrade and re-take all switches. Or, you can use Router Save/Restore to restore status on Grass Valley (GV) routers.
- All memory on all Jupiter control system boards will be cleared after the installation and download process. The memory is cleared due to a mandatory “pmemclear” command.
- All configuration sets will need to be recompiled.

Equipment Required

GV-supplied PC 3000 (F7-029500-121) file server or a PC with the following minimum requirements:

- Windows XP Professional - SP2 (English version)
- 2 GHz Pentium processor
- 2 GB of RAM
- 125 MB of Hard disk space for the Jupiter application
- Intel or 3Com Ethernet LAN card
- Keyboard and mouse

A minimum resolution of 1280 X 1024 and 32 -bit color PC monitor setting is recommended for proper display of the Jupiter Soft Panel and VSD screens. The Appearance font size on the Display Properties dialog (Control Panels> Display> Appearance: Font size drop-down list) should be set to Normal. Selecting either the *Large* or the *Extra Large Fonts* option will cause application display problems.

Software Required

Installation of the Jupiter 7.9.0 release is only supported on the English version of Windows XP Professional SP2 or later. Windows Firewall and any Anti-Virus Firewall must be disabled to allow the Bootp, TFTP, and JNS applications to operate properly.

Materials Supplied

The information shown below in the following tables are supplied with the release.

Jupiter Software upgrade for:

- JUP-SW 2500 (Jupiter LE for VM/SI-3000), or
- JUP-SW 3100 (Jupiter Plus for VM-SI-3000), or
- JUP-SW 3500 (Jupiter XPress for CM-4000),
- JUP-SW 4400 (Jupiter AccuSwitch for CM-4400), or
- JUP-SW 4000 (Jupiter AccuSwitch for CM-4000):

QTY	Description	Part number
1	Software, CD, Jupiter v7.9.0	063809315
1	Release Notes	071827513

Optional Materials

The following manuals and optional software are also available:

- Application specific software licenses (refer to Section 1 of the Jupiter Installation and Operating manuals for more information)
- Jupiter VM/SI-3000 Installation and Operating Manual (VM-3000)
- Jupiter CM-4000 Installation and Operating Manual.
- Jupiter CM-4400 Installation and Operating Manual.
- L, S, and LCD Series Jupiter Control Panels Manual. (Manual available online-contact Technical Support for more information.)
- AccuSwitch Soft Panels and Visual Status Display

Software Update

CAUTION During the software update your Jupiter system will be taken off-line for a short time while the control boards (CM-4000 and CM-4400) are updated. Existing matrix cross-points will remain selected, but source to destination changes will not be possible while the control boards are off-line.

Contact Grass Valley Customer Support if you have any questions regarding this software update.

Note Read these instructions carefully and follow all the steps exactly to help ensure that your update goes smoothly.

Update Only Existing Jupiter Systems

This procedure is for updating an existing Jupiter system that has been previously installed, completely configured, and is operating correctly. New Jupiter systems ship from the factory with the latest version of software pre-installed. New systems do not need their software updated. However, new Jupiter systems will need to be configured to operate at your facility.

Installing the Jupiter Software Components

Updating a Previous Installation

The update procedure is a two-step process. The first step will be to remove the previous version of the Jupiter software. The second step will then start the installation of the latest version of the application.

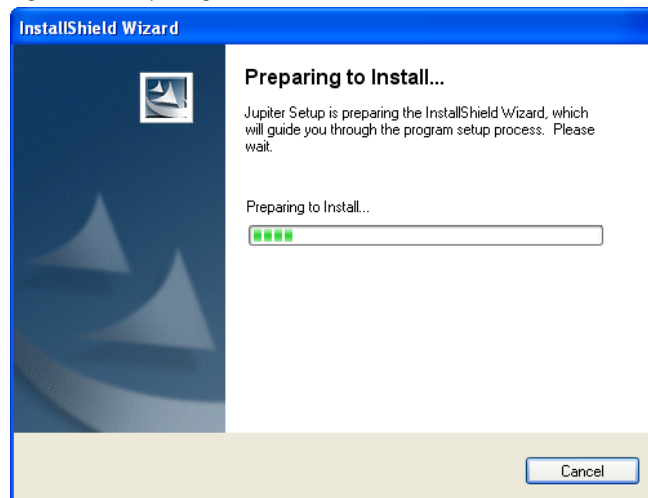
Removing the Previous Version

The Installation program will check to see if an earlier version of Jupiter is installed on the computer. The earlier version will be removed before the latest version will be installed. You will need to start the Installation program again after the earlier version has been removed.

To start the update process and remove the previous version:

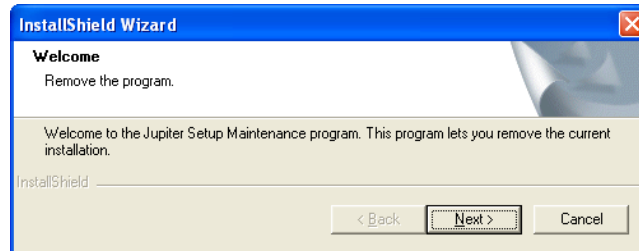
1. Insert the Jupiter System Software CD into the PC. If the Installation Program doesn't start up automatically, double-click the **Setup.exe** icon on the CD. The Preparing to Install screen will then be displayed (Figure 11).

Figure 11. Preparing to Install Screen



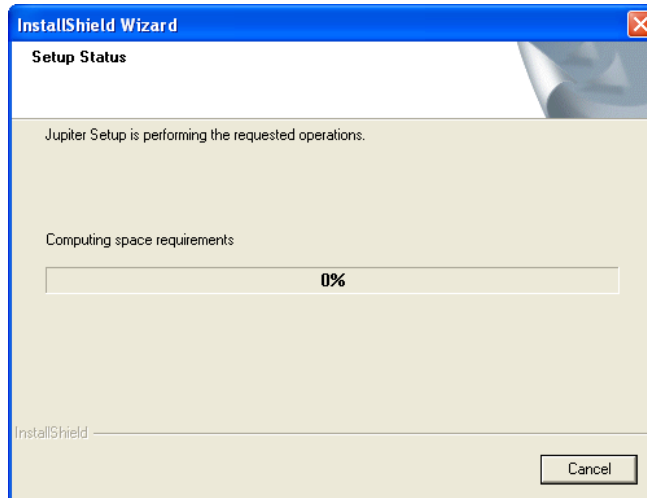
The Welcome - Remove the program screen will then appear after a few minutes (Figure 12).

Figure 12. Welcome - Remove the Program Screen



2. Click the **Next>** button. The Setup Status screen will then appear (Figure 13).

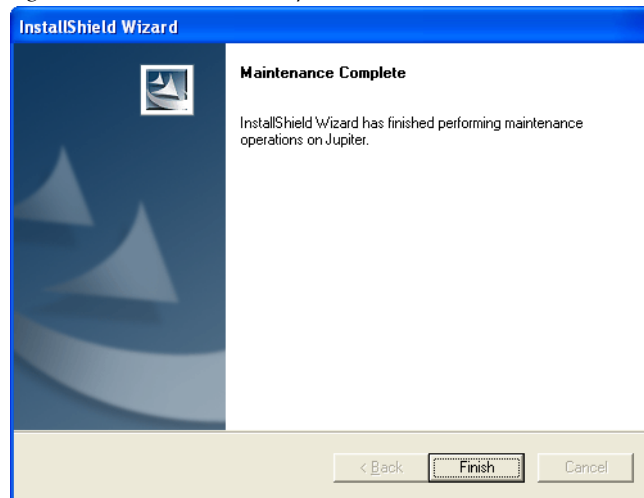
Figure 13. Setup Status Screen



The previous version of the application will then be removed.

When the removal of the application has been completed, the Maintenance Complete screen will then appear (Figure 14).

Figure 14. Maintenance Complete Screen



3. Click the **Finish** button. The InstallShield Wizard application will then close.

You can now install the latest version of Jupiter.

Installing the Latest Version

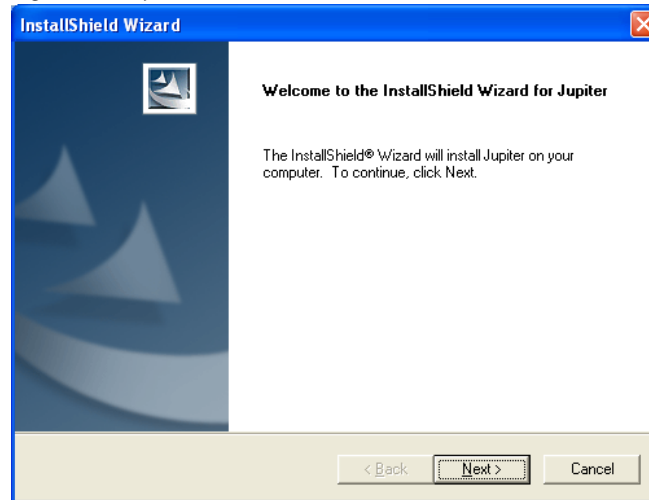
Note To help ensure any hidden activity is stopped you should restart the computer.

Before you begin the installation process, make sure that you close all Jupiter programs on the configuration PC and disable any virus protection programs or firewalls.

Follow these steps to start a new installation Process:

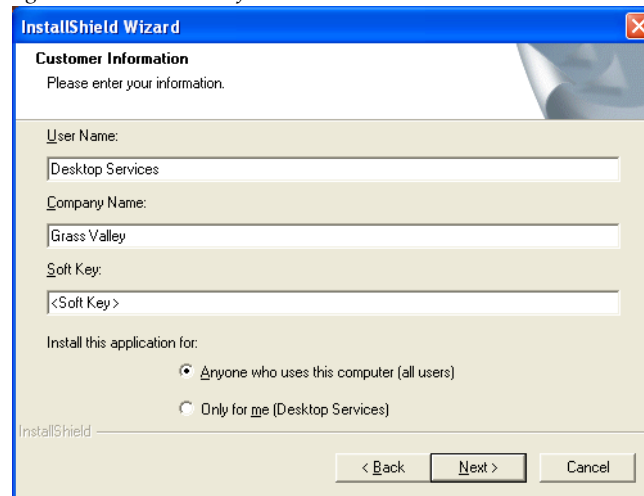
1. Insert the Jupiter System Software CD into the PC. If the Installation Program doesn't start up automatically, double-click the **Setup.exe** icon on the CD. The Jupiter Installation Welcome screen will then be displayed (Figure 15).

Figure 15. Jupiter Installation Welcome Screen



2. Click the **Next >** button. The Customer Information screen will then appear (Figure 16).

Figure 16. Customer Information



3. Enter your User Name, Company Name, and the Soft Key in their respective fields.

Note The Soft key can be found on the plastic case that the Jupiter CD was shipped with.

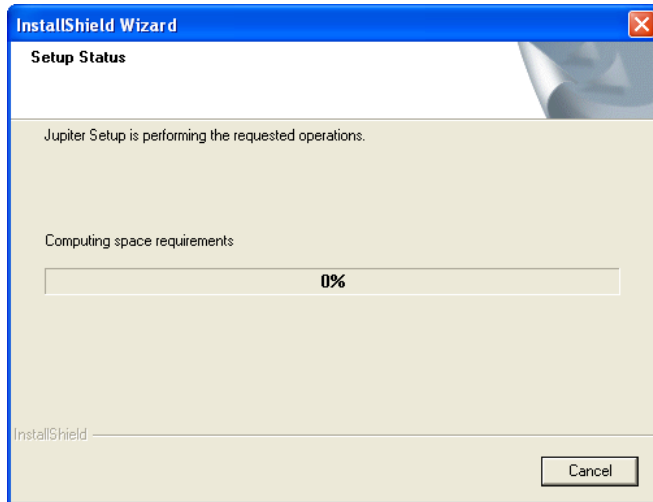
4. Select the **Anyone who uses this computer (all users)** radio button.
5. Click the **Next >** button. The Software License Agreement screen will then appear (Figure 17).

Figure 17. License Agreement



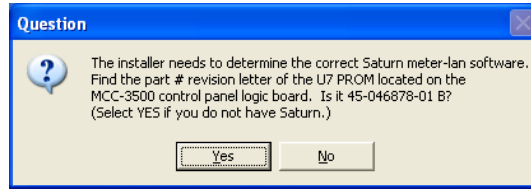
6. Click the **Yes** button to accept the license agreement. The Setup Type screen will then appear (Figure 18).

Figure 18. Setup Type Screen



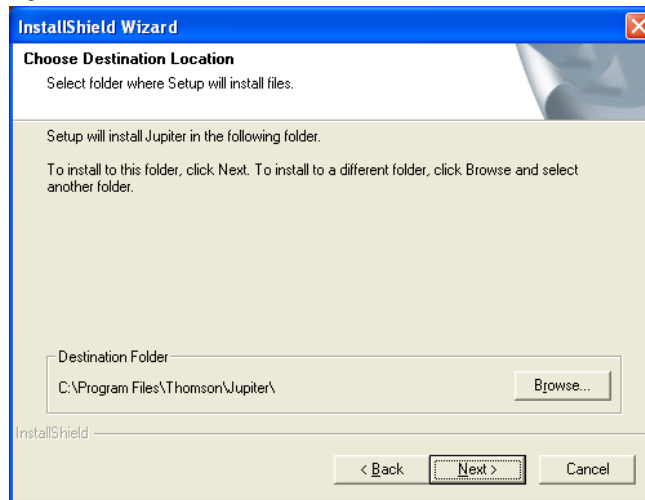
7. Select the preferred type of installation and then click the **Next >** button. The Question dialog will then appear (Figure 19). You will need the Part Number Revision letter on the MCC-3500 Control Panel Logic board. For example, in figure below the part number is correct.

Figure 19. Question Screen



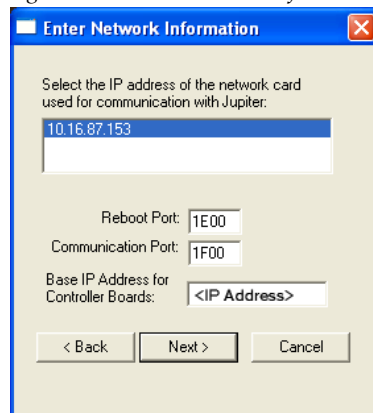
8. Click the **Yes** button if the letter is correct or if you are not using the Saturn Master Control system. The Choose Destination location screen will then appear (Figure 20).

Figure 20. Choose Destination Location Screen



9. Browse to the Destination folder of your choice and then click the **Next >** button. The Enter Network Information dialog will then appear (Figure 21).

Figure 21. Enter Network Information Screen



10. Select the IP address for the Network card that will communicate with the Jupiter system.

Note Consult with your Network administrator if you do not know the network values to enter.

- If there is more than one Network card installed, all the cards will appear in the dialog window.
- Enter the Port information in the respective fields

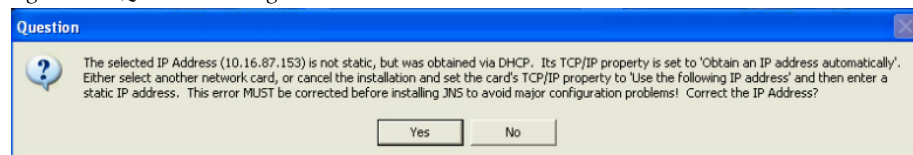
11. Enter the IP address for the Controller boards in the required field and then click the **Next>** button.

Note You must set the Subnet Mask and Gateway IP addresses to run the 7.9 version of Jupiter on the CM-4400. See *Setting the Subnet Mask and Gateway IP Addresses* [on page 8](#) for more information.

Using DHCP

If you are using DHCP, that is your IP address is not static, you will see the following Question dialog ([Figure 22](#)).

Figure 22. Question Dialog



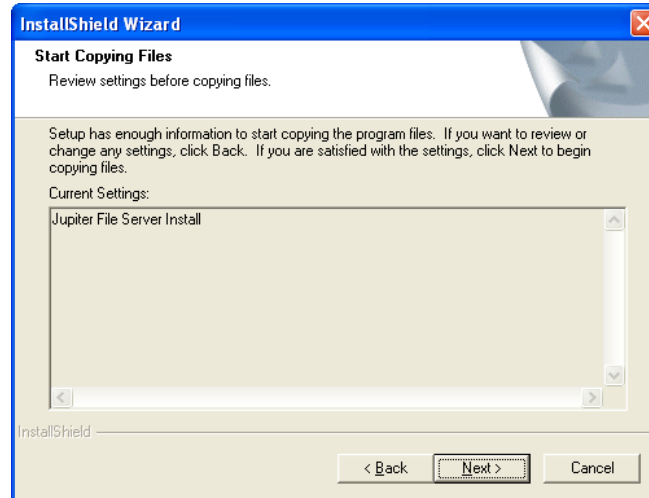
Note It is strongly recommended that you use a Static IP address. Using DHCP may cause configuration problems.

If you want to correct the IP address, click the **Yes** button. The Choose Destination Location screen will then appear.

Using a Static IP Address

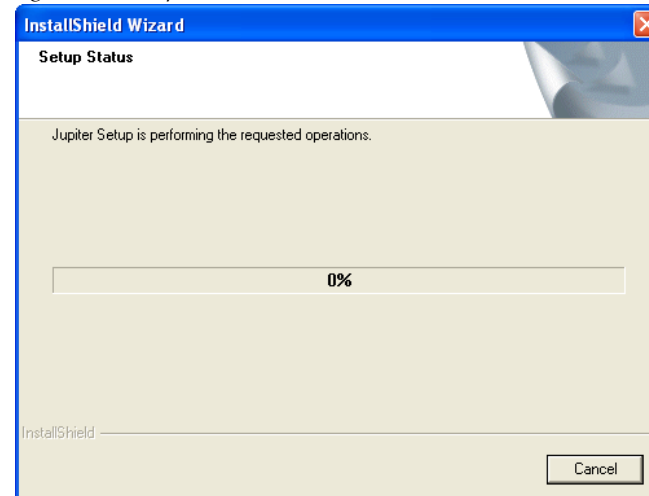
The Start Copying Files screen will appear (Figure 23).

Figure 23. Start Copying Files Screen



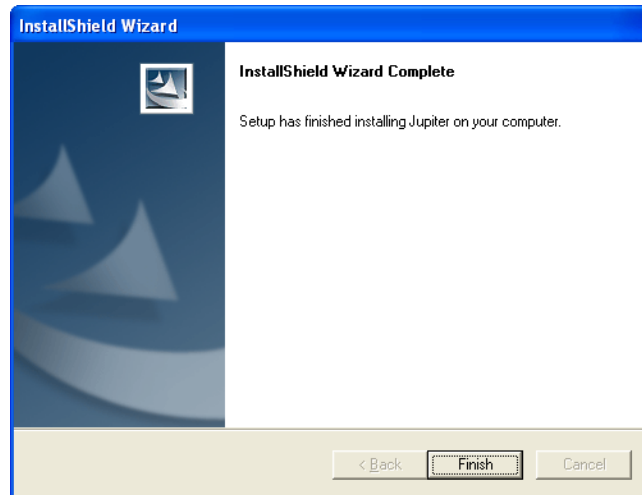
1. Review the Current Settings and then click the **Next>** button. The Setup Status screen will then appear (Figure 24).

Figure 24. Setup Status Screen



When the Installation process is completed the InstallShield Wizard Complete screen will then appear (Figure 25).

Figure 25. InstallShield Wizard Complete Screen



2. Click the **Finish** button. The installation process is now completed.