



# JUPITER

## CONTROL SYSTEM

Release Notes  
Software Version 7.9.1

**KEMA Quality**

# CERTIFICATE

Certificate Number: 510040.001

The Quality System of:

## **Grass Valley USA, LLC and its Grass Valley Affiliates**

Headquarters:

**400 Providence Mine Road  
Nevada City, CA 95945  
United States**

**15655 SW Greystone Ct.  
Beaverton, OR 97006  
United States**

**Brunnenweg 9  
D-64331 Weiterstadt  
Germany**

**Kapittelweg 10  
4827 HG Breda  
The Netherlands**

**2300 So. Decker Lake Blvd.  
Salt Lake City, UT 84119  
United States**

Including its implementation, meets the requirements of the standard:

## **ISO 9001:2008**

Scope:

The design, manufacture and support of video and audio hardware and software products and related systems.

This Certificate is valid until: June 14, 2012  
This Certificate is valid as of: December 23, 2010  
Certified for the first time: June 14, 2000



H. Pierre Sallé  
President  
KEMA-Registered Quality

The method of operation for quality certification is defined in the KEMA General Terms And Conditions For Quality And Environmental Management Systems Certifications. Integral publication of this certificate is allowed.

**KEMA-Registered Quality, Inc.**  
4377 County Line Road  
Chalfont, PA 18914  
Ph: (215)997-4519  
Fax: (215)997-3809  
CRT 001 042108

Accredited By:  
ANAB



a  **DEKRA** company



# JUPITER

## CONTROL SYSTEM

Release Notes  
Software Version 7.9.1

# Contacting Grass Valley

<b>International Support Centers</b>	<b>France 24 x 7</b>	+800 8080 2020 or +33 1 48 25 20 20	<b>United States/Canada 24 x 7</b>	+1 800 547 8949 or +1 530 478 4148
<b>Local Support Centers (available during normal business hours)</b>	<b>Asia</b>	<b>Hong Kong, Taiwan, Korea, Macau:</b> +852 2531 3058 <b>Indian Subcontinent:</b> +91 22 24933476 <b>Southeast Asia/Malaysia:</b> +603 7805 3884 <b>Southeast Asia/Singapore:</b> +65 6379 1313 <b>China:</b> +861 0660 159 450 <b>Japan:</b> +81 3 5484 6868		
		<b>Australia and New Zealand:</b> +61 1300 721 495	<b>Central/South America:</b> +55 11 5509 3443	
		<b>Middle East:</b> +971 4 299 64 40 <b>Near East and Africa:</b> +800 8080 2020 or +33 1 48 25 20 20		
	<b>Europe</b>	<b>Belarus, Russia, Tadzikistan, Ukraine, Uzbekistan:</b> +7 095 2580924 225 <b>Switzerland:</b> +41 1 487 80 02 <b>S. Europe/Italy-Roma:</b> +39 06 87 20 35 28 <b>-Milan:</b> +39 02 48 41 46 58 <b>S. Europe/Spain:</b> +34 91 512 03 50 <b>Benelux/Belgium:</b> +32 (0) 2 334 90 30 <b>Benelux/Netherlands:</b> +31 (0) 35 62 38 42 1 <b>N. Europe:</b> +45 45 96 88 70 <b>Germany, Austria, Eastern Europe:</b> +49 6150 104 444 <b>UK, Ireland, Israel:</b> +44 118 923 0499		

Copyright © Grass Valley USA, LLC. All rights reserved.

This product may be covered by one or more U.S. and foreign patents.

## Grass Valley Web Site

The [www.grassvalley.com](http://www.grassvalley.com) web site offers the following:

**Online User Documentation** — Current versions of product catalogs, brochures, data sheets, ordering guides, planning guides, manuals, and release notes in .pdf format can be downloaded.

**FAQ Database** — Solutions to problems and troubleshooting efforts can be found by searching our Frequently Asked Questions (FAQ) database.

**Software Downloads** — Download software updates, drivers, and patches.



## END-OF-LIFE PRODUCT RECYCLING NOTICE

Grass Valley's innovation and excellence in product design also extends to the programs we've established to manage the recycling of our products. Grass Valley has developed a comprehensive end-of-life product take back program for recycle or disposal of end-of-life products. Our program meets the requirements of the European Union's WEEE Directive, the United States Environmental Protection Agency, and U.S. state and local agencies.

Grass Valley's end-of-life product take back program assures proper disposal by use of Best Available Technology. This program accepts any Grass Valley branded equipment. Upon request, a Certificate of Recycling or a Certificate of Destruction, depending on the ultimate disposition of the product, can be sent to the requester.

Grass Valley will be responsible for all costs associated with recycling and disposal, including freight. However, you are responsible for the removal of the equipment from your facility and packing the equipment to make it ready for pickup.



For further information on the Grass Valley product take back system please contact Grass Valley at + 800 80 80 20 20 or +33 1 48 25 20 20 from most other countries. In the U.S. and Canada please call 800-547-8949, and ask to be connected to the EH&S Department. Additional information concerning the program can be found at: [www.grassvalley.com/about/environmental-policy](http://www.grassvalley.com/about/environmental-policy)

001187401

# Contents

- JUPITER Release Notes** ..... 7
  - Introduction ..... 7
  - New Features in Jupiter Release 7.9.1 AccuSwitch ..... 7
  - Support for Wild Card Characters ..... 8
  - Improved Support for the Pro-Bel SW-P-08 Protocol ..... 8
  - Changed the Physical IO limits ..... 8
    - Changing the Limits ..... 9
  - AccuSwitch Supports the JEP-100 Panels ..... 9
  - Support for Trinix Multiviewer ..... 10
  - Upgrading to 7.9.1 ..... 11
    - Caveats ..... 11
    - Equipment Required ..... 11
    - Software Required ..... 11
    - Materials Supplied ..... 12
    - Optional Materials ..... 12
  - Software Update ..... 12
    - Update Only Existing Jupiter Systems ..... 13
  - Installing the Jupiter Software Components ..... 14
    - Updating a Previous Installation ..... 14
    - Removing the Previous Version ..... 14
    - Installing the Latest Version ..... 16



# *JUPITER Release Notes*

## **Introduction**

This document describes new product enhancements that are provided in the 7.9.1 version of the Jupiter Control system. The installation procedure that should be used to upgrade a Jupiter system to the 7.9.1 version is also described in this document (See the [Upgrading to 7.9.1](#) section).

**Note** This release only supports the English version of the Windows XP Professional Operating system.

## **New Features in Jupiter Release 7.9.1 AccuSwitch**

The 7.9.1 version of the Jupiter AccuSwitch Control system software has the following enhancements and changes:

- Added the ability to use wild card characters when retrieving Source, Destination, and Level names.
- Improved support for the Pro-Bel SW-P-08 Protocol.
- Changed the Physical IO limits from 4096 to 8192 for all remote drivers.
- AccuSwitch supports the JEP-100 panels.
- Added incoming GV Native Protocol to support interface with GV Trinx Multiviewer.

These features provide customers with improved control, convenience, and flexibility when connecting and using Jupiter's control panels.

Each of these features is described in detail below.

## Support for Wild Card Characters

Wild card characters may now be used when retrieving Source, Destination, and Level names using Automation.

In the past, when using the ES LAN protocol and reading a mnemonic, you would need to enter the level, and either the source or destination.

Now, you can retrieve all the source or destinations mnemonics if you enter "0xff" for the level, source, or destinations.

This feature follows the SMPTE protocol; Grass valley recommends that you refer to this protocol to see how this feature will help you to meet your business needs.

## Improved Support for the Pro-Bel SW-P-08 Protocol

The 7.9.1 version of the Jupiter system supports two improved protocol drivers, for AccuSwitch, that implement parts of the Pro-Bel SW-P-08 protocol.

The following improvements have been made:

- The SW-P-08 remote router protocol will not allow data to be sent from the inactive board.
- The SW-P-08 protocol driver type has been added to the Switcher Description table's list of drivers that are not refreshed.
- Protects from the protocol will protect AccuSwitch. No Lock or Protect will be sent to the protocol. However, the function will be similar to a lock because the panel id will not allow changes unless they are from the panel.

## Changed the Physical IO limits

The Physical IO limits have been changed from 4096 to 8192 for all remote drivers.

**Note** This change does not affect Xpt (Crosspoint) bus drivers. For example, the Binary, Bin Confirm All, and DM400B driver options.



## Changing the Limits

You can now set the physical size to 8192, instead of 4096 in the Switcher Description table when you specify a remote router driver. The following instructions assume that the Switcher Description table has been launched.

**Note** The driver that you select will need to have been previously identified in the Serial Protocol table.

Figure 1. The Switcher Description Table with New Limits

Switcher	Level	VI	RV	MC	Board	#In	#Out	PLvl	Follow Level	Driver	Option 1	Option 2	Data Optio...	Audio	DM400 Off Time
1	sw1	video	<input checked="" type="checkbox"/>	<input type="checkbox"/>	<input type="checkbox"/>	CM1	512	512	7		Bin Confirm All			<None>	
2	sw1	left	<input checked="" type="checkbox"/>	<input type="checkbox"/>	<input type="checkbox"/>	CM1	512	512	2		Bin Confirm All			<None>	
3	sw1	right	<input checked="" type="checkbox"/>	<input type="checkbox"/>	<input type="checkbox"/>	CM1	512	512	6		Bin Confirm All			<None>	
4	sw1	tc	<input checked="" type="checkbox"/>	<input type="checkbox"/>	<input type="checkbox"/>	CM1	512	512	3		Bin Confirm All			<None>	
5	sw2	video	<input type="checkbox"/>	<input type="checkbox"/>	<input type="checkbox"/>	CM2	512	512	3		Alpha			<None>	
6	sw2	left	<input checked="" type="checkbox"/>	<input checked="" type="checkbox"/>	<input checked="" type="checkbox"/>	CM2	8000	8000	101		SWP08			<None>	
7	sw2	right	<input type="checkbox"/>	<input type="checkbox"/>	<input type="checkbox"/>	CM2	2048	2048	102		SWP08			<None>	
8	sw2	tc	<input checked="" type="checkbox"/>	<input type="checkbox"/>	<input type="checkbox"/>	CM2	512	512	4		Bin Confirm All			<None>	
9	sw3	gnp	<input type="checkbox"/>	<input type="checkbox"/>	<input type="checkbox"/>	CM2	1024	1024	201		GNP(GVG Na...			<None>	
10	sw3	gnp2	<input type="checkbox"/>	<input type="checkbox"/>	<input type="checkbox"/>	CM2	64	64	202		GNP(GVG Na...			<None>	

Follow these steps to set the new limits:

1. Select the routing switcher row that you want to change. In the example in [Figure 1](#), the SWP08 in row #6 was selected.
2. Select or confirm the driver by selecting it from the Driver drop-down list. Any driver but, the Binary, Bin Confirm All, and DM400B driver options may be selected.
3. Enter the new limits in the #In and #Out columns; entries can be up to 8192. In the example shown in [Figure 1](#), 8000 has been entered for both limits.
4. Click the **Apply** Button.

You will need to save your changes then validate, compile, and then activate the configuration set.

## AccuSwitch Supports the JEP-100 Panels

The JEP-100 panels have been updated to include the following features.

### Output Button Assignment

An Output button's assignment can be made from the Jupiter configuration. Any Output / Destination buttons assignment can now be defined.

See Section 5: The Configurator Application in the CM-4400 Jupiter manual for the steps needed to make these assignments.

### **Updates using NetConfig**

The JEP-100 panel software can be updated using NetConfig once the panel software is updated to version 1.3..0.

### **Password Protection**

Password protection may be enabled. A password level below 90 then a operator cannot:

- Assign sources destinations, levels, or salvos to buttons.
- Change the Id of the panel
- Change the connection type of the panel.

The menu items “change ID” and “ES Lan on/off” will not be visible to the user.

A password level that is less than 95:

- The button assignment will be enabled
- The user cannot change the connection type, or the panel ID.

A password level of 95 or greater:

The button assignment is enabled and the operator can change the connection type and the panel ID from the menu of the control panel.

### **Disabling the Configuration and Setup Menus**

The Control panels Configuration and Setup Menus may be disabled. Any button can be configured to be unassigned for an input or output (Blank Buttons).

See the latest JEP-100 Panel and the CM-4400 manuals for more information about these updates.

## **Support for Trinix Multiviewer**

The Jupiter AccuSwitch 7.9.1 release supports the Trinix Multiviewer using Incoming GV Native Protocol. The Trinix Multiviewer product integrates with a router control system using Native Protocol. The Trinix Multiviewer board inputs are configured as router destinations and can be controlled by any control panel given access to those destinations.

Either Grass Valley's Jupiter AccuSwitch (ver. 7.9.1), or Encore (ver. 1.8.1), control systems may be used with the Trinix Multiviewer board..

# Upgrading to 7.9.1

## Caveats

Please read the following caveats before starting the upgrade procedure. During this upgrade procedure:

- All switcher status will be lost. To restore status, make note of the status of all outputs before starting the upgrade and re-take all switches. Or, you can use Router Save/Restore to restore status on Grass Valley (GV) routers.
- All memory on all Jupiter control system boards will be cleared after the installation and download process. The memory is cleared due to a mandatory “pmemclear” command.
- All configuration sets will need to be recompiled.

## Equipment Required

GV-supplied PC 3000 (F7-029500-121) file server or a PC with the following minimum requirements:

- Windows XP Professional - SP2 (English version)
- 2 GHz Pentium processor
- 2 GB of RAM
- 125 MB of Hard disk space for the Jupiter application
- Intel or 3Com Ethernet LAN card
- Keyboard and mouse

A minimum resolution of 1280 X 1024 and 32 -bit color PC monitor setting is recommended for proper display of the Jupiter Soft Panel and VSD screens. The Appearance font size on the Display Properties dialog (Control Panels> Display> Appearance: Font size drop-down list) should be set to Normal. Selecting either the *Large* or the *Extra Large Fonts* option will cause application display problems.

## Software Required

Installation of the Jupiter 7.9.1 release is only supported on the English version of Windows XP Professional SP2 or later. Windows Firewall and any Anti-Virus Firewall must be disabled to allow the Bootp, TFTP, and JNS applications to operate properly.

## Materials Supplied

The information shown below in the following tables are supplied with the release.

Jupiter Software upgrade for:

- JUP-SW 2500 (Jupiter LE for VM/SI-3000), or
- JUP-SW 3100 (Jupiter Plus for VM-SI-3000), or
- JUP-SW 3500 (Jupiter XPress for CM-4000),
- JUP-SW 4400 (Jupiter AccuSwitch for CM-4400), or
- JUP-SW 4000 (Jupiter AccuSwitch for CM-4000):

QTY	Description	Part number
1	Software, CD, Jupiter v7.9.1	063809315
1	Release Notes	071827514

## Optional Materials

The following manuals and optional software are also available:

- Application specific software licenses (refer to Section 1 of the Jupiter Installation and Operating manuals for more information)
- Jupiter VM/SI-3000 Installation and Operating Manual (VM-3000)
- Jupiter CM-4000 Installation and Operating Manual.
- Jupiter CM-4400 Installation and Operating Manual.
- L, S, and LCD Series Jupiter Control Panels Manual. (Manual available online-contact Technical Support for more information.)
- AccuSwitch Soft Panels and Visual Status Display

## Software Update

**CAUTION** During the software update your Jupiter system will be taken off-line for a short time while the control boards (CM-4000 and CM-4400) are updated. Existing matrix cross-points will remain selected, but source to destination changes will not be possible while the control boards are off-line.

Contact Grass Valley Customer Support if you have any questions regarding this software update.

**Note** Read these instructions carefully and follow all the steps exactly to help ensure that your update goes smoothly.

## **Update Only Existing Jupiter Systems**

This procedure is for updating an existing Jupiter system that has been previously installed, completely configured, and is operating correctly. New Jupiter systems ship from the factory with the latest version of software pre-installed. New systems do not need their software updated. However, new Jupiter systems will need to be configured to operate at your facility.

# Installing the Jupiter Software Components

## Updating a Previous Installation

The update procedure is a two-step process. The first step will be to remove the previous version of the Jupiter software. The second step will then start the installation of the latest version of the application.

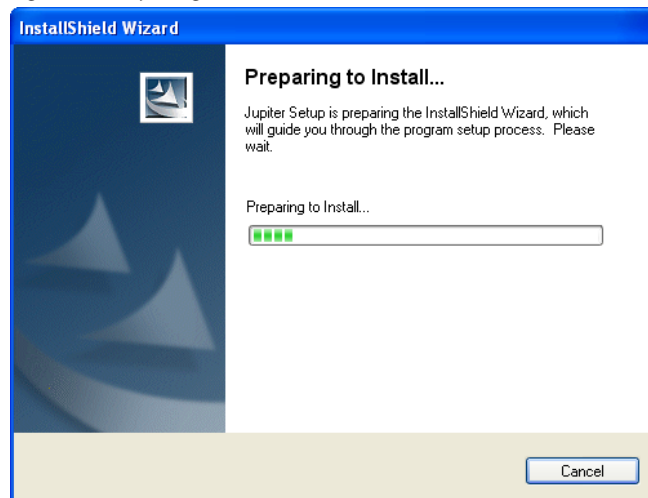
## Removing the Previous Version

The Installation program will check to see if an earlier version of Jupiter is installed on the computer. The earlier version will be removed before the latest version will be installed. You will need to start the Installation program again after the earlier version has been removed.

To start the update process and remove the previous version:

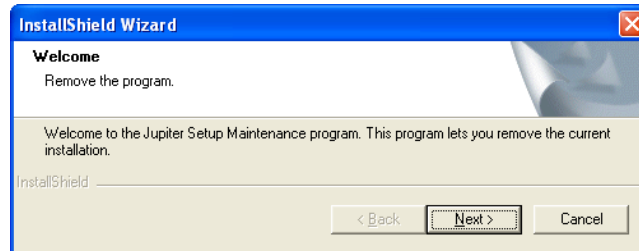
1. Insert the Jupiter System Software CD into the PC. If the Installation Program doesn't start up automatically, double-click the **Setup.exe** icon on the CD. The Preparing to Install screen will then be displayed (Figure 2).

Figure 2. Preparing to Install Screen



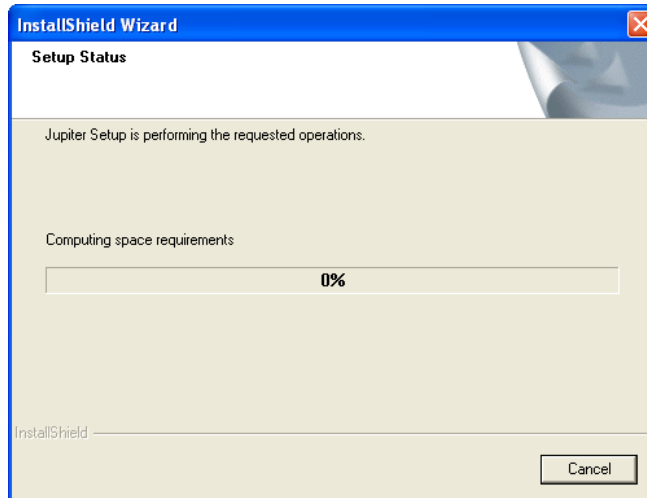
The Welcome - Remove the program screen will then appear after a few minutes (Figure 3).

Figure 3. Welcome - Remove the Program Screen



2. Click the **Next>** button. The Setup Status screen will then appear (Figure 4).

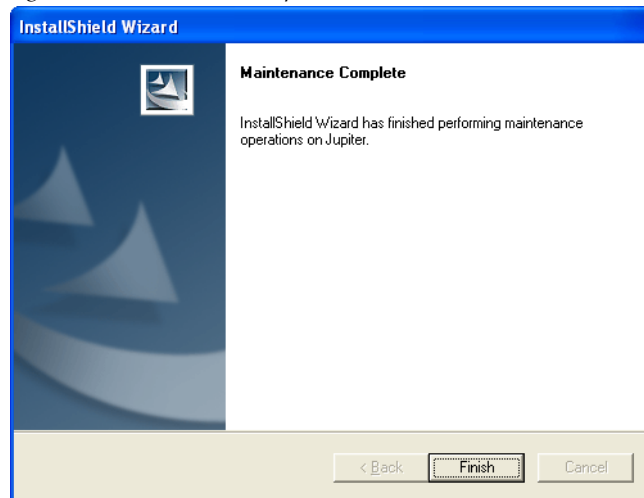
Figure 4. Setup Status Screen



The previous version of the application will then be removed.

When the removal of the application has been completed, the Maintenance Complete screen will then appear (Figure 5).

Figure 5. Maintenance Complete Screen



3. Click the **Finish** button. The InstallShield Wizard application will then close.

You can now install the latest version of Jupiter.

## Installing the Latest Version

**Note** To help ensure any hidden activity is stopped you should restart the computer.

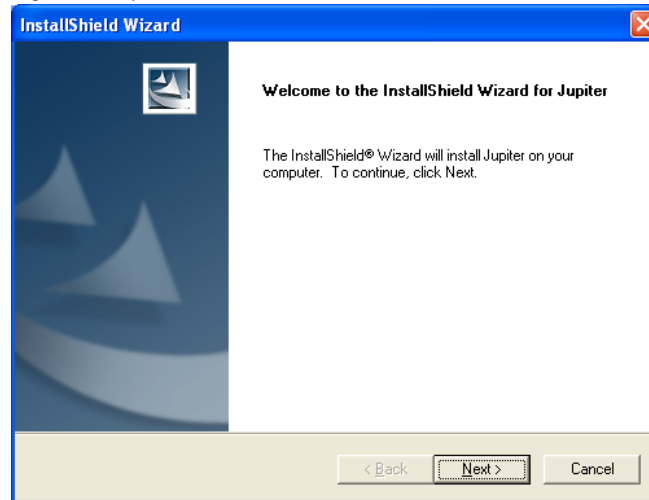
Before you begin the installation process, make sure that you close all Jupiter programs on the configuration PC and disable any virus protection programs or firewalls.



Follow these steps to start a new installation Process:

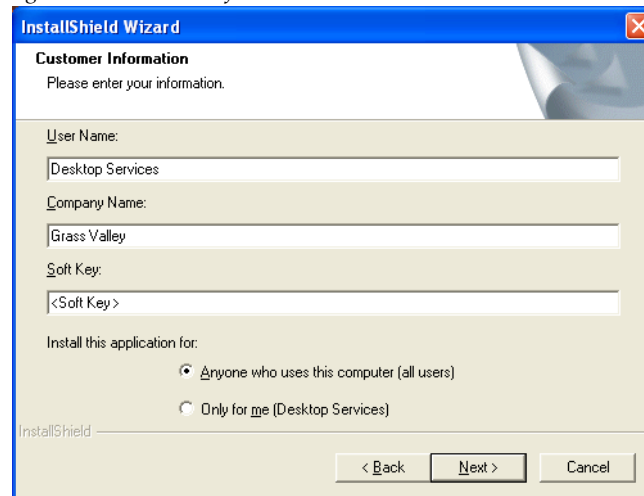
1. Insert the Jupiter System Software CD into the PC. If the Installation Program doesn't start up automatically, double-click the **Setup.exe** icon on the CD. The Jupiter Installation Welcome screen will then be displayed (Figure 6).

Figure 6. Jupiter Installation Welcome Screen



2. Click the **Next >** button. The Customer Information screen will then appear (Figure 7).

Figure 7. Customer Information

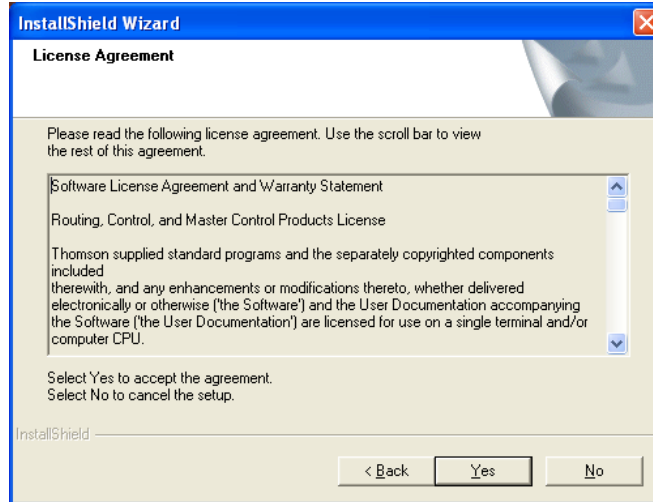


3. Enter your User Name, Company Name, and the Soft Key in their respective fields.

**Note** The Soft key can be found on the plastic case that the Jupiter CD was shipped with.

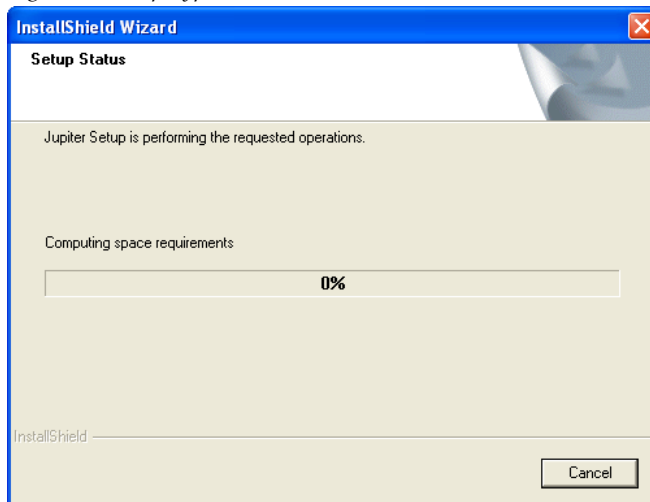
4. Select the **Anyone who uses this computer (all users)** radio button.
5. Click the **Next >** button. The Software License Agreement screen will then appear (Figure 8).

Figure 8. License Agreement



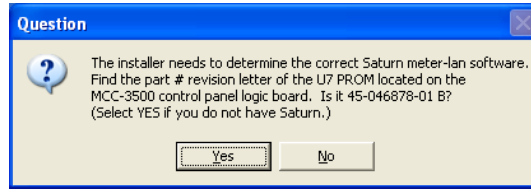
6. Click the **Yes** button to accept the license agreement. The Setup Type screen will then appear (Figure 9).

Figure 9. Setup Type Screen



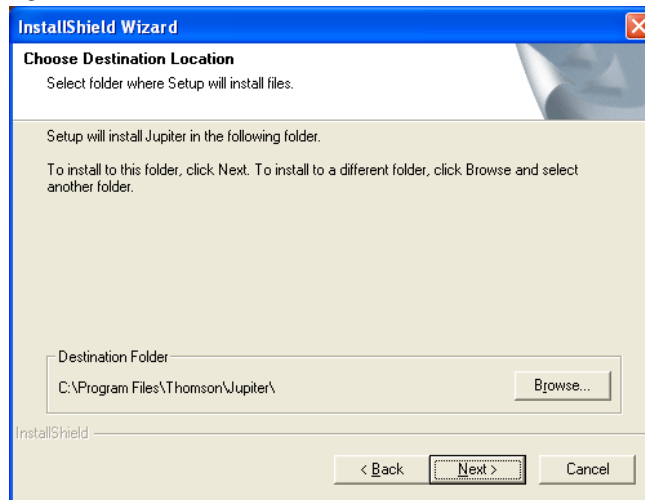
7. Select the preferred type of installation and then click the **Next >** button. The Question dialog will then appear (Figure 10). You will need the Part Number Revision letter on the MCC-3500 Control Panel Logic board. For example, in figure below the part number is correct.

Figure 10. Question Screen



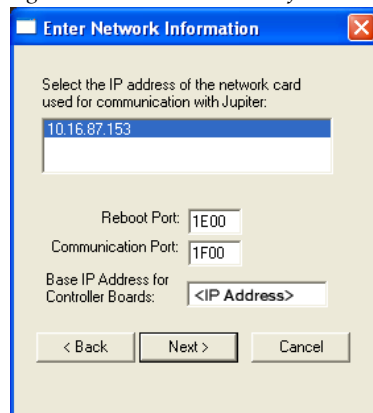
8. Click the **Yes** button if the letter is correct or if you are not using the Saturn Master Control system. The Choose Destination location screen will then appear (Figure 11).

Figure 11. Choose Destination Location Screen



9. Browse to the Destination folder of your choice and then click the **Next >** button. The Enter Network Information dialog will then appear (Figure 12).

Figure 12. Enter Network Information Screen



10. Select the IP address for the Network card that will communicate with the Jupiter system.

**Note** Consult with your Network administrator if you do not know the network values to enter.

- If there is more than one Network card installed, all the cards will appear in the dialog window.
- Enter the Port information in the respective fields

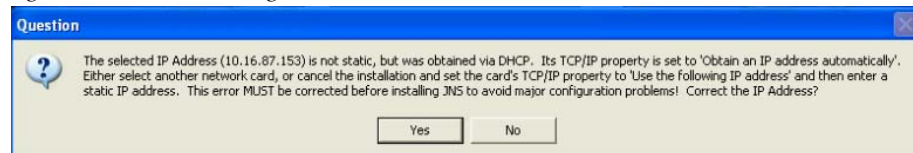
**11.** Enter the IP address for the Controller boards in the required field and then click the **Next>** button.

**Note** You must set the Subnet Mask and Gateway IP addresses to run the 7.9 version of Jupiter on the CM-4400. See [Setting the Subnet Mask and Gateway IP Addresses on page 8](#) for more information.

### Using DHCP

If you are using DHCP, that is your IP address is not static, you will see the following Question dialog ([Figure 13](#)).

Figure 13. Question Dialog



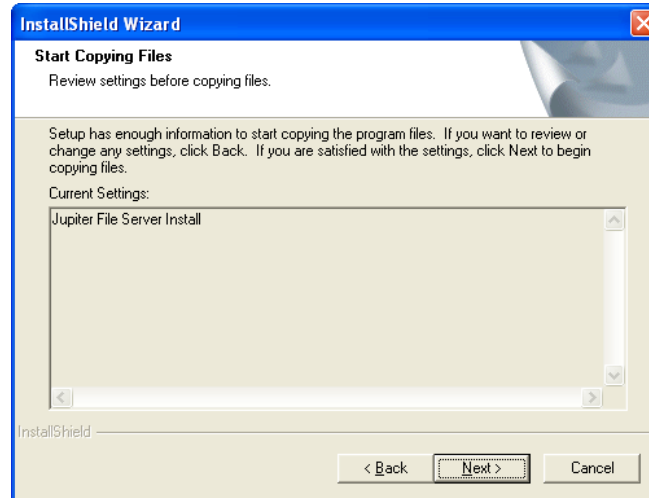
**Note** It is strongly recommended that you use a Static IP address. Using DHCP may cause configuration problems.

If you want to correct the IP address, click the **Yes** button. The Choose Destination Location screen will then appear.

## Using a Static IP Address

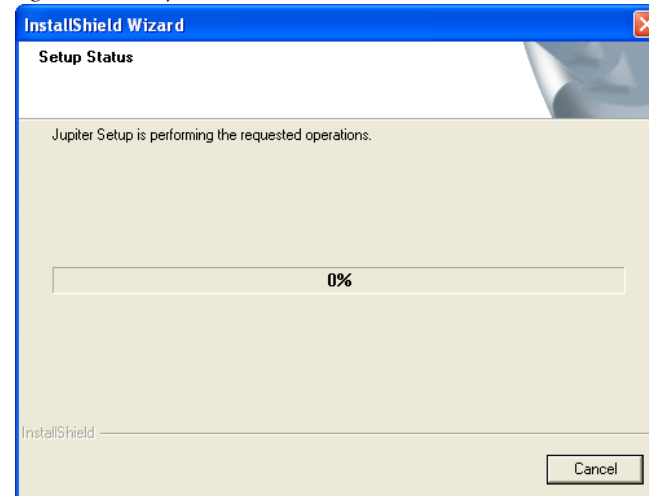
The Start Copying Files screen will appear (Figure 14).

Figure 14. Start Copying Files Screen



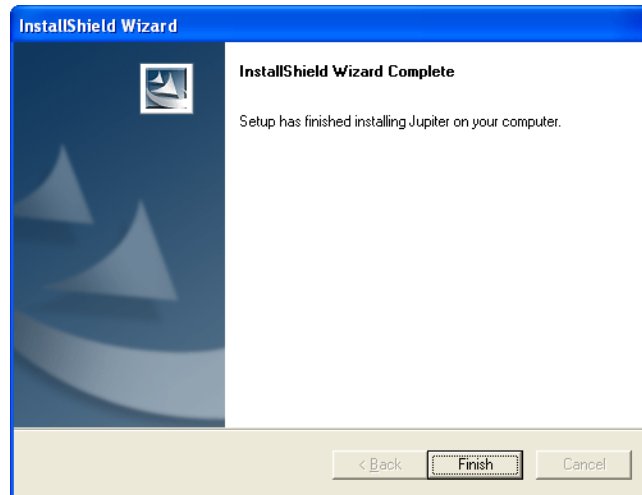
1. Review the Current Settings and then click the **Next>** button. The Setup Status screen will then appear (Figure 15).

Figure 15. Setup Status Screen



When the Installation process is completed the InstallShield Wizard Complete screen will then appear (Figure 16).

Figure 16. InstallShield Wizard Complete Screen



2. Click the **Finish** button. The installation process is now completed.