

# JUPITER

## L-S and LCD Panels



Release Notes  
Software Version 2.3.0

**KEMA Quality**

# CERTIFICATE

Certificate Number: 510040.001

The Quality System of:

## **Grass Valley USA, LLC and its Grass Valley Affiliates**

**Headquarters:**

**400 Providence Mine Road  
Nevada City, CA 95945  
United States**

**15655 SW Greystone Ct.  
Beaverton, OR 97006  
United States**

**Brunnenweg 9  
D-64331 Weiterstadt  
Germany**

**Kapittelweg 10  
4827 HG Breda  
The Netherlands**

**2300 So. Decker Lake Blvd.  
Salt Lake City, UT 84119  
United States**

Including its implementation, meets the requirements of the standard:

## **ISO 9001:2008**

Scope:

The design, manufacture and support of video and audio hardware and software products and related systems.

This Certificate is valid until: June 14, 2012  
This Certificate is valid as of: December 23, 2010  
Certified for the first time: June 14, 2000



H. Pierre Sallé  
President  
KEMA-Registered Quality

The method of operation for quality certification is defined in the KEMA General Terms And Conditions For Quality And Environmental Management Systems Certifications. Integral publication of this certificate is allowed.

**KEMA-Registered Quality, Inc.**  
4377 County Line Road  
Chalfont, PA 18914  
Ph: (215)997-4519  
Fax: (215)997-3809  
CRT 001 042108

Accredited By:  
ANAB



a  **DEKRA** company



# JUPITER

## L-S and LCD Panels

**Release Notes**  
Software Version 2.3.0

# Contacting Grass Valley

<b>International Support Centers</b>	<b>France 24 x 7</b>	+800 8080 2020 or +33 1 48 25 20 20	<b>United States/Canada 24 x 7</b>	+1 800 547 8949 or +1 530 478 4148
<b>Local Support Centers (available during normal business hours)</b>	<b>Asia</b>	<b>Hong Kong, Taiwan, Korea, Macau:</b> +852 2531 3058 <b>Indian Subcontinent:</b> +91 22 24933476 <b>Southeast Asia/Malaysia:</b> +603 7805 3884 <b>Southeast Asia/Singapore:</b> +65 6379 1313 <b>China:</b> +861 0660 159 450 <b>Japan:</b> +81 3 5484 6868		
		<b>Australia and New Zealand:</b> +61 1300 721 495	<b>Central/South America:</b> +55 11 5509 3443	
		<b>Middle East:</b> +971 4 299 64 40 <b>Near East and Africa:</b> +800 8080 2020 or +33 1 48 25 20 20		
	<b>Europe</b>	<b>Belarus, Russia, Tadzikistan, Ukraine, Uzbekistan:</b> +7 095 2580924 225 <b>Switzerland:</b> +41 1 487 80 02 <b>S. Europe/Italy-Roma:</b> +39 06 87 20 35 28 <b>-Milan:</b> +39 02 48 41 46 58 <b>S. Europe/Spain:</b> +34 91 512 03 50 <b>Benelux/Belgium:</b> +32 (0) 2 334 90 30 <b>Benelux/Netherlands:</b> +31 (0) 35 62 38 42 1 <b>N. Europe:</b> +45 45 96 88 70 <b>Germany, Austria, Eastern Europe:</b> +49 6150 104 444 <b>UK, Ireland, Israel:</b> +44 118 923 0499		

Copyright © Grass Valley USA, LLC. All rights reserved.

This product may be covered by one or more U.S. and foreign patents.

## Grass Valley Web Site

The [www.grassvalley.com](http://www.grassvalley.com) web site offers the following:

**Online User Documentation** — Current versions of product catalogs, brochures, data sheets, ordering guides, planning guides, manuals, and release notes in .pdf format can be downloaded.

**FAQ Database** — Solutions to problems and troubleshooting efforts can be found by searching our Frequently Asked Questions (FAQ) database.

**Software Downloads** — Download software updates, drivers, and patches.



## END-OF-LIFE PRODUCT RECYCLING NOTICE

Grass Valley's innovation and excellence in product design also extends to the programs we've established to manage the recycling of our products. Grass Valley has developed a comprehensive end-of-life product take back program for recycle or disposal of end-of-life products. Our program meets the requirements of the European Union's WEEE Directive, the United States Environmental Protection Agency, and U.S. state and local agencies.

Grass Valley's end-of-life product take back program assures proper disposal by use of Best Available Technology. This program accepts any Grass Valley branded equipment. Upon request, a Certificate of Recycling or a Certificate of Destruction, depending on the ultimate disposition of the product, can be sent to the requester.

Grass Valley will be responsible for all costs associated with recycling and disposal, including freight. However, you are responsible for the removal of the equipment from your facility and packing the equipment to make it ready for pickup.



For further information on the Grass Valley product take back system please contact Grass Valley at + 800 80 80 20 20 or +33 1 48 25 20 20 from most other countries. In the U.S. and Canada please call 800-547-8949, and ask to be connected to the EH&S Department. Additional information concerning the program can be found at: [www.grassvalley.com/about/environmental-policy](http://www.grassvalley.com/about/environmental-policy)

001187401

# Contents

- L-S and LCD Panels Release Notes** ..... 7
  - Introduction ..... 7
  - New Features in the 2.3.0 Version ..... 7
    - Source Paging..... 7
      - Initiating the Source Page Feature..... 8
      - Turning the Source Page Feature Off ..... 8
      - Using the Source Page Feature..... 9
  - Upgrading to 2.3.0..... 10
  - Software Installation..... 10
    - L-S and LCD Panels Software Installation (on Jupiter File Server) ..... 10
  - Network IP Addresses ..... 12
    - Network Configuration Procedure (NetConfig)..... 12
    - Setting IP Addresses on the L-S and LCD Panels..... 12
    - Setting Jupiter Values for L-S and LCD Panels..... 13
  - Finding the Physical Location of a Panel..... 15
  - L-S and LCD Panel Software Update..... 15



Version **2.3.0**

NOVEMBER 2011

# *L-S and LCD Panels Release Notes*

## Introduction

This document describes new product enhancements that are provided in the 2.3.0 version of the Jupiter AccuSwitch L-S and LCD Panels. The installation procedure that should be used to upgrade the L-S and LCD Panels to the 2.3.0 version is also described in this document (See *Upgrading to 2.3.0 on page 10*).

**Note** This release only supports the English version of the Windows XP Professional Operating system.

## New Features in the 2.3.0 Version

The 2.3.0 version of the Jupiter AccuSwitch L-S and LCD Panels software has added Source Paging for the S100 and L64 Jupiter LAN Panels. This feature is described in detail below.

### Source Paging

The Source paging feature may be used with the S100 and L64 Jupiter LAN Panels. This feature adds a menu option to enable source paging to the panels mentioned above. This feature is OFF by default. Once paging is enabled, it is stored in Flash memory and will remain enabled until it is disabled even if the panel is powered down. The Source paging feature only applies to sources and will not work with Destinations.

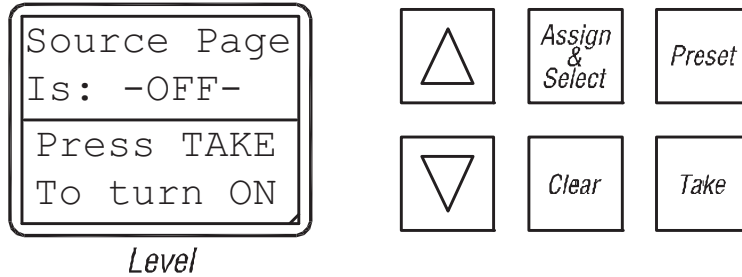
The panel will display the next available page of sources when the **Up** arrow or **Down** arrow is pressed. The panel must be in the Home state, which is reached after a Take or pressing **clear**. Pressing both the **Up** and **Down** arrows at the same time displays the “home” page (page 1).

## Initiating the Source Page Feature

Follow these steps to turn on the Source page feature:

1. Select the Panel Config option in the Panel's menu.
2. Scroll through the options, using the **Up** and **Down** arrows to the Source Page menu (Figure 1).

Figure 1. The Source Page Menu



071853606\_Source Page-menu\_R1

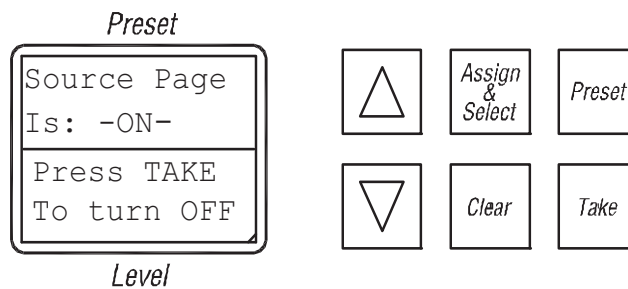
3. Press the **Take** button to turn On the feature .

## Turning the Source Page Feature Off

Follow these steps to turn off the Source page feature:

1. Select the Panel Config option in the Panel's menu.
2. Scroll through the options, using the **Up** and **Down** arrows to the Source Page menu (Figure 2).

Figure 2. The Source Page Menu



071853606\_Source Page-menu\_R1

3. Press the **Take** button to turn OFF the feature .

**Note** The panel will restart automatically when the source paging feature is turned off.



## Using the Source Page Feature

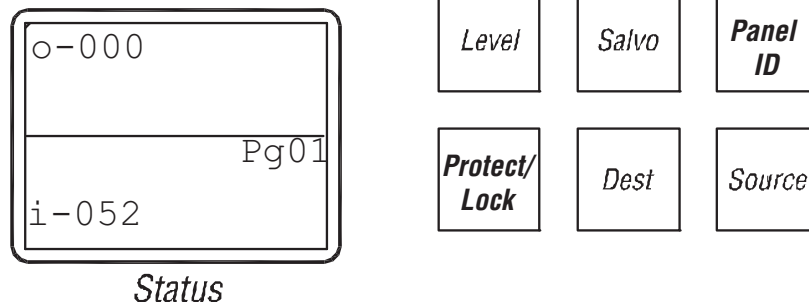
Follow these steps to use the Source paging feature:

**Note** The following steps assume that the Source paging feature has been enabled.

The example below will first increment the Sources page by one and then decrease the page number by two.

1. Press the **Clear** button to ensure the panel is in the Home state. In source page mode, home state displays page 1
2. Press the **Up** arrow one time. The page number (Pg02) will be displayed in the top right of the Status window.

Figure 3. The Page Number  
*Destination*



3. Press the **Down** arrow one time. The page number (Pg01) will be displayed (Figure 3).

Pressing both the **Up** and **Down** arrows at the same time displays Pg01.

## Upgrading to 2.3.0

L-S and LCD series hardware panels are shipped with the current software installed. There is no need to install panel software on newly shipping systems. However, the IP address must be set on each panel so it can operate on the network. The NetConfig application is used to discover and set IP addresses of the L-S and LCD series panels. NetConfig is also used to update L-S and LCD series panel software, by transferring panel code from the computer running NetConfig directly to the panels. The L-S and LCD panels communicate with the CM-4000/CM-4400 controller boards via the ESLAN or Serial protocol. Once communications is established, the L-S and LCD panels will receive their operational configurations from the Jupiter CM-4000/CM-4400 controller.

## Software Installation

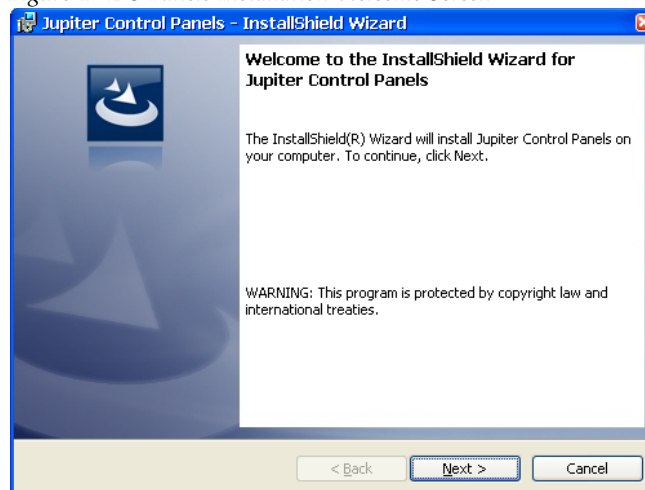
### L-S and LCD Panels Software Installation (on Jupiter File Server)

The Grass Valley NetConfig application is supplied on the L-S and LCD Panels Software CD that is shipped with the panel.

1. Insert the Jupiter L-S Panels Software CD into the Jupiter file server computer, the L-S and LCD Panels installation application will launch (Figure 4).

This program loads files from the CD onto the computer running the installer program. You can later use NetConfig to install the software directly on the L-S and LCD series panels.

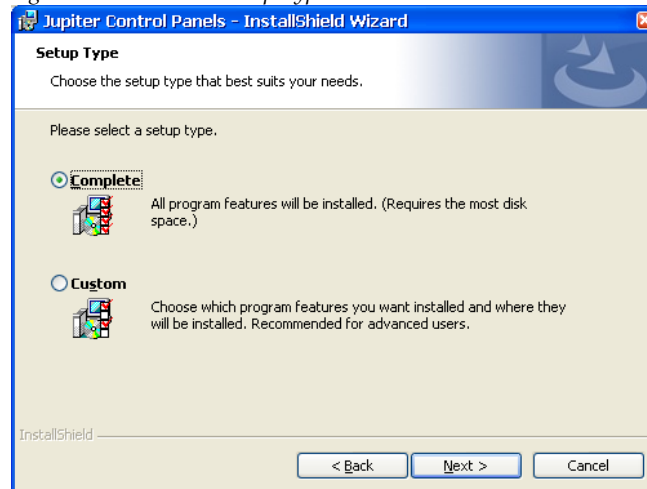
Figure 4. L-S Panels Installation Welcome Screen



The *Setup Type* Screen will then appear.

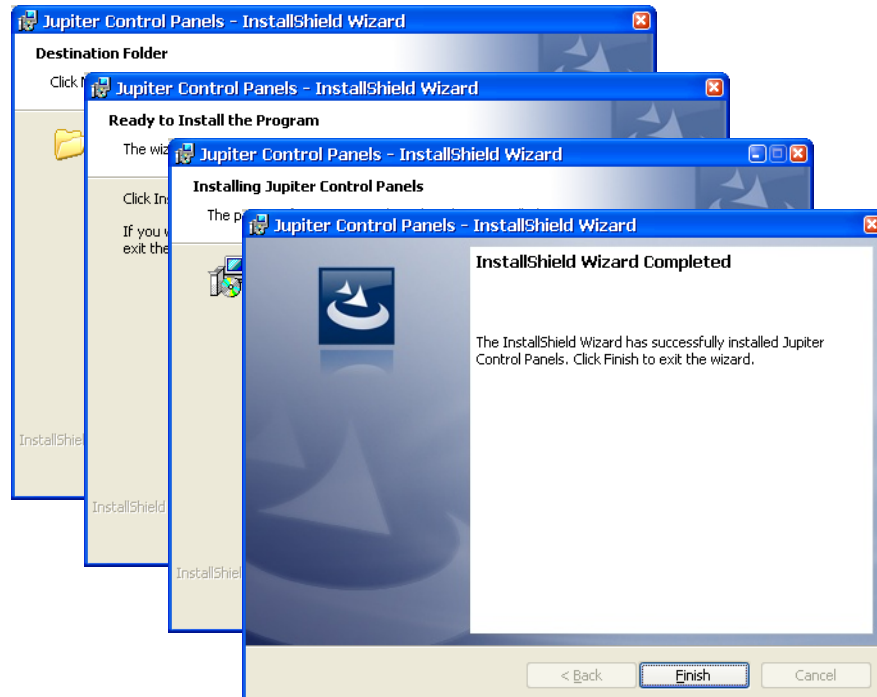
2. Select the **Complete** radio button (Figure 5).

Figure 5. L-S Panels Setup Type Screen



3. Click the **Next>** button and follow the instructions shown on the subsequent screens, accepting the defaults (Figure 6).

Figure 6. L-S Panels Installation Screens



4. Click **Finish** when the L-S Panels software installation completes.

## Network IP Addresses

IP connection and configuration allows Ethernet operation and provides a downloading path for software upgrades. The L-S panel, Jupiter System controller (CM-4000 or CM-4400), and Jupiter file server PC must be on the same IP network, or be connected through a network router/gateway.

See the *Jupiter L-S and LCD Series Control Panels Installation and Service Manual* for more information.

### Network Configuration Procedure (NetConfig)

The network configuration procedure requires the Grass Valley NetConfig application v2.0.9 or newer. NetConfig is supplied on the CD shipped with the panel (see *Software Installation* [on page 10](#)).

The network configuration procedure consists of two parts:

- Setting the panel IP address, subnet value, and gateway address, and
- Setting the panel “Device Number” and other Jupiter values.

### Setting IP Addresses on the L-S and LCD Panels

When L-S and LCD panels are being installed for the first time, the user will need to load the NetConfig application on the Jupiter file server PC.

**Note** The following is a summary of the NetConfig portion of the configuration process. For a complete description of the NetConfig application, refer to the *NetConfig Instruction manual*.

1. Connect the panel to the IP switch on the Jupiter network. Apply power. If the panel has a display window, you should see the default IP address of the panel.

If there are other devices on the Jupiter LAN with this same address, they should be disconnected at this time.

2. Launch the NetConfig application from the control-system file server.
3. Expand the “IP View.”

You should see the Jupiter file server name and IP address.

4. Expand the listing under the Jupiter file server.

You should see the panel name and the factory default address of the panels. In most cases, you will see a red dot next to the panel name,

meaning that the panel address needs to be changed as described below.

If you do not see the expected name of the panel:

- Select “Configure > NetConfig Options > Clear Views and Re-discover.”
- Check to see that the “IP View > Product Web Access Pages” are not being covered by other views, such as “Device view” or “Facility View.”

In some cases, you may need to cycle power to the panel.

5. Change the panel IP address to place the panel on the Jupiter network:
  - a. Select the panel requiring an address change.
  - b. Select the “Set IP” button along the top of the NetConfig window. You should see the “Change IP Addresses” menu.
  - c. In the “Select Device Type” field, select “All Devices.”
  - d. Select the panel requiring an address change.
  - e. Select “Edit.”
  - f. IP address: set to a unique value within the same network as the Jupiter file server.

For example, if the Jupiter file server address is 192.168.253.1, then the panel address should be changed to reside in the 192.168.253.x network (such as “192.168.253.101”).

- g. Subnet Mask: set to 255.255.255.0 (Class C network).
- h. Gateway: not used in a simple network environment.

If the panel and the server are on separate networks, the gateway connecting them must be specified.

- i. Select “OK,” “Apply Changes,” and “Close.”

In the IP View, a green dot should indicate that the panel is fully connected.

The panel itself should reboot.

- j. Proceed to [Setting Jupiter Values for L-S and LCD Panels](#) below.

## Setting Jupiter Values for L-S and LCD Panels

During the following steps, you will need to know the IP address of the AccuSwitch system that will be associated with the panel. Use the Jupiter File Server JNS Control Center application to determine the CM-4000/CM-4400 IP address (the Control Center application is described in both the

*Jupiter CM-4000 Installation and Operating manual and the Jupiter CM-4400 Installation and Operating manual).*

1. Using NetConfig, click on the name of the panel (as described in [Step 4](#) above on [page 12](#)).

You should see the Product Web Access page for the panel.

2. Select “Panel Network.”

You should see the Panel Network Configuration page.

- a. The “Net-1 IP Settings” should already be correct (they were set using the “Change IP Addresses” menu described above).
- b. Uncheck “Net-1: Set DHCP Mode” and “Net-2: Set DHCP Mode” (unless IP addresses are being set automatically by a Dynamic Host Configuration Protocol server).
- c. ES-LAN/Serial Device #:

Each panel connected to an AccuSwitch controller must be given a unique number.

- Enter a number from 1 to 64 for a LAN only system.
- Enter a number from 1 to 16 for a Serial only system.

The “Device #” is referred to as the “Device ID” on the panel itself and the “Address” on the Jupiter MPK Devices table. See *Section 4-Jupiter System Configuration* in the Installation and Service manual for more information.

- d. ES-LAN Primary Host IP: enter the IP address of the Control module associated with this panel.
- e. ES-LAN Secondary Host IP: enter the IP address of the redundant Control module (if any).

3. Select “Save New Settings.”

This will apply the settings and reboot the panel. You should see some type of status response from the router

4. Go to the next panel and repeat the steps above.

**Note** For initial installations, the Jupiter/AccuSwitch control system must be configured in order for the Control module to communicate with the panel.

## Finding the Physical Location of a Panel

NetConfig can be used to send an “identify device” signal to a particular panel, causing the panel to display a flashing red and yellow checkerboard pattern.

1. Use Device View and go to Router > Jupiter > Panels.
2. Expand the panel type name and right click on the name of the panel of interest.
3. Select “Identify Device” from the pop-up menu.

The panel will flash the checkerboard pattern for the number of seconds set in the Options menu.

## L-S and LCD Panel Software Update

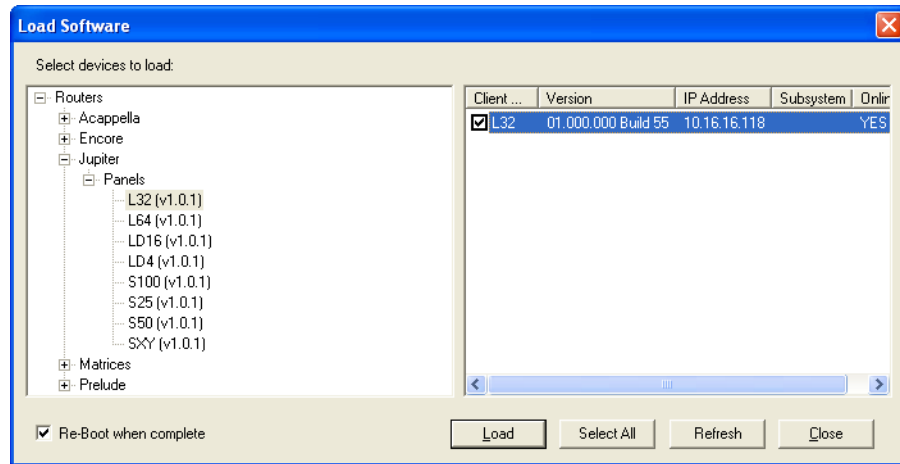
**Note** NetConfig and the Jupiter Control Center use the same TFTP port. Only one will own the port at a time. When updating control panel software the Jupiter Control Center should be shut down, and NetConfig must be closed to send any Jupiter configuration changes.

NetConfig is used to update the operating software that resides on each L-S series panel. NetConfig accomplishes this by sending the flash files installed onto the computer running NetConfig (Jupiter file server recommended) to the panels via the network. For this reason, panel IP addresses must be set correctly before L-S and LCD panel software can be updated. See *Setting IP Addresses on the L-S and LCD Panels* [on page 12](#) for more information.

1. Launch NetConfig.

- Click on the **Load Software** tab at the top of the NetConfig screen. The software load window will open (Figure 7).

Figure 7. Load Software Screen



- Navigate to the Jupiter/Panels folder in the left pane and select the type of panel whose software you wish to update.
- Select the specific panel(s) in the right pane you wish to update.
- Ensure the **Re-Boot when complete** box on the lower left is checked.
- Click **Load**. The software will be loaded to the selected panels and the panels will reboot.