

K2

AVID Connect



Installation Manual and Release Notes

Software Version 7.0.0

CERTIFICATE

Certificate Number: 510040.001

The Quality System of:

Grass Valley USA, LLC and its Grass Valley Affiliates

Headquarters:

400 Providence Mine Road
Nevada City, CA 95945
United States

15655 SW Greystone Ct.
Beaverton, OR 97006
United States

Kapittelweg 10
4827 HG Breda
The Netherlands

2300 So. Decker Lake Blvd.
Salt Lake City, UT 84119
United States

Including its implementation, meets the requirements of the standard:

ISO 9001:2008

Scope:

The design, manufacture and support of video and audio hardware and software products and related systems.

This Certificate is valid until: June 14, 2015
This Certificate is valid as of: June 14, 2012
Certified for the first time: June 14, 2000



President
DEKRA Certification, Inc

The method of operation for quality certification is defined in the DEKRA General Terms And Conditions For Quality And Environmental Management Systems Certifications. Integral publication of this certificate is allowed.

DEKRA Certification, Inc.
4377 County Line Road
Chalfont, PA 18914
Ph: (215)997-4519
Fax: (215)997-3809
CRT 001 042108

Accredited By:
ANAB





K2

AVID Connect

Installation Manual and Release Notes

Software Version 7.0.0

Contacting Grass Valley

International Support Center		United States/Canada +1 800 547 8949 or +1 530 478 4148	
Local Support Centers	N.America	+1 800 547 8949 (Option 2) or +1 530 478 4148	France: +800 80 80 20 20 or +33 1 48 25 20 20
	Asia	Hong Kong, Taiwan, Korea, Macau: +852 2531 3000 India: 1800 200 3432 (within India) Southeast Asia/Malaysia: +603 7492 3033 Southeast Asia/Singapore: +65 6379 1771 China: +86 10 5883 7525	
		Australia: 1300 721 495 New Zealand: 0800 846 676 Outside Australia/New Zealand: +61 3 8540 3650	
		Near East and Africa: +800 8080 2020 or +33 1 48 25 20 20	Central/South America: +55 11 5509 3443
	Europe	Armenia/Azerbaijan/Belarus/Kazakhstan/Kyrgyzstan/Moldova/Russia/Tajikistan/Turkmenistan/Ukraine/Uzbekistan : +7 495 787 06 55 Turkey: +90 (0) 212 408 22 23 N. Europe: +44 844 338 7007, +44 (0) 20 8867 6305 S. Europe/Italy: +39 06 87 20 35 28 S. Europe/Portugal: +34 91 512 03 58 S. Europe/Spain: +34 91 512 03 50 Belgium/Luxemburg: +32 (0) 2 334 90 30 Netherlands: +31 (0) 76 57 21420 Germany, Austria, Eastern Europe: +49 6150 104 444 UK, Ireland, Israel: +44 844 338 7007	

Copyright © Grass Valley USA, LLC. All rights reserved.
This product may be covered by one or more U.S. and foreign patents.

Grass Valley Web Site

The <http://www.grassvalley.com/support> web site offers the following:

Online User Documentation — Current versions of product catalogs, brochures, data sheets, ordering guides, planning guides, manuals, and release notes in .pdf format can be downloaded.

FAQ Database — Solutions to problems and troubleshooting efforts can be found by searching our Frequently Asked Questions (FAQ) database.

Software Downloads — Download software updates, drivers, and patches.



END-OF-LIFE PRODUCT RECYCLING NOTICE

Grass Valley's innovation and excellence in product design also extends to the programs we've established to manage the recycling of our products. Grass Valley has developed a comprehensive end-of-life product take back program for recycle or disposal of end-of-life products. Our program meets the requirements of the European Union's WEEE Directive, the United States Environmental Protection Agency, and U.S. state and local agencies.

Grass Valley's end-of-life product take back program assures proper disposal by use of Best Available Technology. This program accepts any Grass Valley branded equipment. Upon request, a Certificate of Recycling or a Certificate of Destruction, depending on the ultimate disposition of the product, can be sent to the requester.

Grass Valley will be responsible for all costs associated with recycling and disposal, including freight. However, you are responsible for the removal of the equipment from your facility and packing the equipment to make it ready for pickup.



For further information on the Grass Valley product take back system please contact Grass Valley at + 800 80 80 20 20 or +33 1 48 25 20 20 from most other countries. In the U.S. and Canada please call 800-547-8949, and ask to be connected to the EH&S Department. Additional information concerning the program can be found at: www.grassvalley.com/about/environmental-policy

001187401

Contents

What's new in K2-AvidTM/AMA.....	7
About K2/Avid Transfer Manager and Avid Media Access.....	7
What's new in version 7.0.0.163.....	7
Build 7.0.0.163.....	7
Changes and features in previous releases.....	7
Build 7.0.0.162.....	7
Build 7.0.0.161.....	8
Build 7.0.0.150.....	8
Build 7.0.0.149.....	8
Build 7.0.0.148.....	8
Build 7.0.0.147.....	8
Build 7.0.0.146.....	8
Build 7.0.0.145.....	9
Build 7.0.0.144.....	9
Build 7.0.0.143.....	9
Build 7.0.0.142.....	9
Build 7.0.0.141.....	9
Build 7.0.0.140.....	9
Build 7.0.0.139.....	10
Build 7.0.0.138.....	10
Build 7.0.0.137.....	10
Build 7.0.0.135.....	10
Build 7.0.0.134.....	10
Build 7.0.0.133.....	11
Build 7.0.0.132.....	11
Build 7.0.0.131.....	11
Build 7.0.0.130.....	11
Build 7.0.0.129.....	11
Build 7.0.0.112.....	11
Reference to system compatibility.....	13
Software version versus Avid Operating System support	13
Microsoft Windows Operating System supported by Profile and K2 Summit system.....	14
K2-AvidTM Software Version and Avid version matrix.....	14
K2-AvidTM Software Version and Video server version matrix.....	15
Supported compression formats.....	19
K2-AvidTM Build 7.0.0.104 supports.....	19
K2-AvidTM Build 7.0.0.105 supports Interplay 2.1.....	20
K2-AvidTM Build 7.0.0.112 to build 7.0.0.128.....	21
K2-AvidTM Build 7.0.0.129 and up supports Interplay Engine 2.5.0.1.....	22
K2-AvidTM Build 7.0.0.143 and up supports Interplay Engine 2.7.0.2.....	23
Installation and configuration.....	25
Installation instructions.....	25
Installing Avid Media Access.....	25
Installing TServerSvc on the K2 Media Clients and K2 Summit Production Client.....	25
Verify TserverSvc is installed correctly.....	29
Prerequisites for installation of K2-AvidTM Software on Avid devices.....	30
Configuring Avid Interplay Transfer Engine.....	30
Configuring the Avid Editor for Transfers.....	31
Installing the K2AvidDHM software.....	32
Verify K2 Avid DHM is installed correctly.....	34

Contents

Installing the K2 Avid Ingest software.....	35
Add and configure devices for Ingest and Playback.....	40
Using the GV AMA plug-in.....	47
Operational considerations.....	49
Operational considerations.....	49
Trademarks and Agreements.....	51
Trademarks.....	51
JPEG acknowledgment.....	51

What's new in K2-Avid™/AMA

About K2/Avid Transfer Manager and Avid Media Access

K2/Avid Transfer Manager is Grass Valley's push and pull plug-in application that allows you to push and pull files stored on a K2 system to and from an Avid editor or shared-storage device.

It provides a seamless interface between GV STRATUS and K2 servers and Avid standalone and shared-storage environments. The K2 system enhances the Avid Workgroup solution in several ways:

- Provide a fast and reliable server for ingest and playout; once a story or a promo created using the Avid editor, you can send it to a K2 system for immediate playout.
- Seamless Avid Interplay nonlinear workflow engine; you can begin playout while the file is being streamed from your editor to a server.
- Additional features to accelerate your workflow that lets you access a file while it's being transferred.
- A mirror option that lets you save to two servers (main and backup) in one operation.
- Ability to simultaneously transfer up to four files between the K2 and editing environments.

With GV AMA (Avid Media Access) plug-in for Media Composer and NewsCutter, you can access GV file-based media directly on the K2 Summit system media volume *v:*. It allows fast editing since you are not required to import the files before the media can be used.

What's new in version 7.0.0.163

Build 7.0.0.163

1. Fixed DE7096 - AMA linked clips that are under construction should show up with the In Progress Icon in Media Composer. This fails if the under construction clip has a Mark-In greater than zero.
2. Build for GV STRATUS version 3.0.
3. Build for Media Composer version 6.5.2 and 7.0.2.
4. Build for Interplay engine version 2.7.5.

Changes and features in previous releases

The following sections describe changes and features in past releases.

Build 7.0.0.162

1. Build for GV STRATUS version 3.0.
2. Build for Media Composer version 6.5.2 and 7.0.2.
3. Build for Interplay engine version 2.7.5.

Build 7.0.0.161

1. Build for GV STRATUS version 2.8.
2. Build for Media Composer version 6.5.2 and 7.0.2.
3. Build for Interplay engine version 2.7.5.

Build 7.0.0.150

1. Build for Interplay transfer engine 2.6 and 2.7 and AMA plugins build with AMA_SDK_3.1_2660.
2. Added new configuration utilities, TServerconfig and IngestConfig.

Build 7.0.0.149

1. Build for Interplay transfer engine 2.6 and 2.7 and AMA plugins build with AMA_SDK_3.1_2660.
2. Increased the ping timeout in AMA K2ConnectionHelper to 300ms, therefore avoiding devices erroneously getting declared offline.
3. Rolled the MVP and MSP PluginMinorVersion to 3.
4. Fixed XmlParser, now validates data before attempting string copy, preventing Media Composer from vaporising.

Build 7.0.0.148

1. Build for Interplay transfer engine 2.6 and 2.7 and AMA plugins build with AMA_SDK_3.0_2555.
2. Added Support for GV STRATUS metadata to the AMA MVP plugin.
3. Rolled the MVP and MSP PluginMinorVersion to 2.
4. Increased the DEFAULT_RCVBUF_SIZE and DEFAULT_SNDBUF_SIZE to (1024*1024)*2 to push the transfer speeds to around 85 to 100MB/sec. If the registry key is already set, then, this must be removed first.

Build 7.0.0.147

1. Build for Interplay transfer engine 2.6 and 2.7 and AMA plugins build with AMA_SDK_3.0_2555.
2. Updated install script to correctly register and unregister dlls.

Build 7.0.0.146

1. Build for Interplay transfer engine 2.6 and 2.7 and AMA plugins build with AMA_SDK_3.0_2555.
2. Added Support for GV STRATUS metadata to the GvgK2Setup.dll.
3. Added Support for GV STRATUS metadata to the AMA MSP plugin.
4. Fixed ncbug00076294: At Random transfer (SEND to PLAY BACK) aborts midstream.

5. User can now select the colour of the locators when ingesting asset via the DHM. This is done via the registry at *Software\Grass Valley Group\Applications\K2-AvidTM\SETUP* value *LocatorColour*. Set the values to:
 - 0 = Red
 - 1=Green
 - 2=Blue
 - 3=Magenta
 - 4=Cyan
 - 5=Yellow
 - 6=White
 - 7=Black

Build 7.0.0.145

1. Build for Interplay transfer engine 2.6 and 2.7.
2. Fixed ncbug00076584: Increased the GXF parser buffer size to handle the large MPEG frames produced by long GOP recording 50Mbit records.
3. Added support for AMA chase editing.

Build 7.0.0.144

- Build for Interplay transfer engine 2.6 and 2.7.

Build 7.0.0.143

- Build for Interplay transfer engine 2.5.

Build 7.0.0.142

- Special Build for Interplay transfer engine 2.2.

Build 7.0.0.141

1. Build for Interplay transfer engine 2.5.
2. Fixed ncbug00075587: Transfers of programs which includes empty audio tracks to Avid MC has audio distortion on the filler tracks. Added Audio fill for 24 bit audio and corrected for progressive formats.
3. Fixed ncbug00074984: Transfer from Avid Media Composer to K2 Summit system fails if part of the Sequence does not have video track. Added DNxHD and AVCi fill fame support. Corrected AVCi fill frame size.

Build 7.0.0.140

1. Build for Interplay transfer engine 2.5.
2. Fixed ncbug00075794: Audio corrupted for Avid sequence transferred to K2 Summit system.
3. Fixed ncbug00075795: Need change the default password for Avid TServer/DHM Ok.

4. Fixed ncbug00075603: K2Avid Explorer hangs if one of the K2 Summit system is rebooted and shutdown.
5. Fixed ncbug00075831: K2Avid Explorer hangs whenever I click on a bin of a K2 Summit system that has just shutdown.
6. Fixed ncbug00075623: K2 AvidExplorer errors during K2 Summit system boot up.

Build 7.0.0.139

1. Build for Interplay transfer engine 2.5.
2. Fixed ncbug00075824: Second round of fixes with the correct path.

Build 7.0.0.138

1. Build for Interplay transfer engine 2.5.
2. Fixed ncbug00075822: Software license agreement for K2 DHM/Ingest/Tserver installation needs to be updated (get rid of Thomson). Changed the Email address from *K2License@thomson.net* to *K2License@grassvalley.com* in the *K2-AvidTm.ini* to be used for License requests wizard.
3. Fixed ncbug00075824: K2-AvidTMLicense request wizard does not launch. Unable to locate *wizard.hta..* Updated the path used by install shield.
4. Fixed ncbug00075785: Updated the license cutter to create licenses named K2-Avid™ instead of k2-DHM and updated the *TemporaryLicense.txt* to include K2-AVID™ Evaluation license instead of SERVER-SOFTWARE-TEMPORARY. Updated the receiver and dhm dll to work with both k2-DHM and K2-AVID™.

Build 7.0.0.137

1. Build for Interplay transfer engine 2.5.
2. Fixed ncbug00075811: Newer version of Sabretooth license manager should be used for Avid DHM PC.

Build 7.0.0.135

- Fixed ncbug00075587 — Filler tracks had random noise. Problem caused by filler audio frame was not initialised to zero. Fixed by `memset(pc,0,sizeof(char)*nSize)`.

Build 7.0.0.134

1. Fixed ncbug00075461 — AvidTServer install had the option show the install log at the end, but it doesn't work. Disabled the "Show the Windows Installer log check box" from the SetupCompleteSuccess dialogbox.
2. Fixed ncbug00075397 — Unable to transfer List or Program from K2 Summit system to Avid. Failures to transfer Lists are caused by additional video frames transferred for transition's. There is no way to handle this on the Avid side. So to address this, any attempt to transfer a list is now rejected.
3. Fixed ncbug00075137 — Sighting: K2 Avid Explorer had an unhandled exception. Added better exception handling and check to guard against accessing null objects.
4. Fixed ncbug00075398 — K2AvidExplorer crashes when user clicks on a bin that no longer exists. Fixed additional issues where bin would not update or wrong bin would be deleted.
5. Fixed ncbug00075399 — Audio misalignment (out of sync with video) on Programs transferred from K2 Summit system to Avid MediaComposer. Added code to correct the Audio sample used when dealing with Programs (sequences).

6. Fixed ncbug00075401 — Logviewer throws an error from K2AvidExplorer whenever the clip name is changed while it is still being recorded.
7. Fixed ncbug00074988 — Transfer of subclips from K2 Summit system to Avid Media Composer sometimes fail. This should be addressed by the fix in ncbug00075399.

Build 7.0.0.133

1. Fixed ncbug00075359 — Send to playback: Drop Frame time code does not drop frames.
2. Fixed ncbug00075439 — Send to playback: Media files are dumped in the Interplay transfer engine folder.

Build 7.0.0.132

- Final fix for Bottom field versus top field issue with DNxHD content.

Build 7.0.0.131

- Fixed Bottom field versus top field issue with DNxHD content.

Build 7.0.0.130

- Added new configurations utility to ease the configuration of the K2-AvidTM.

Build 7.0.0.129

1. First build to support Media Composer version 6.0.1 and Interplay engine 5.0.1.
2. Added support for DNxHD.
3. Changed the Tserver dependencies so it can be installed on the FSM.

Build 7.0.0.112

With the introduction of build 7.0.0.112 and Avid Interplay 2.2.1.1, K2-AvidTM now supports the following:

1. 16 channels of audio.
2. AVC-I ingest and Send to playback. 1080i & 720P, 50Mbit or 100Mbit.
3. Ingest of XDCAM.
4. MetaData can be displayed in Avid editor bin view.
5. Basic sorting on Colum view in K2-Avid Explorer.
6. K2-Avid Explorer no longer allows assets to be deleted or renamed.

Reference to system compatibility

Software version versus Avid Operating System support

Software Version	Windows NT4.0	Windows XP	WIN 7 32 bit	WIN 7 64 bit
7.0.0.104	Yes	Yes	No	No
7.0.0.105	Yes	Yes	No	No
7.0.0.112	No	Yes	Yes	Yes
7.0.0.129	No	No	No	Yes
7.0.0.130	No	No	No	Yes
7.0.0.131	No	No	No	Yes
7.0.0.132	No	No	No	Yes
7.0.0.133	No	No	No	Yes
7.0.0.134	No	No	No	Yes
7.0.0.135	No	No	No	Yes
7.0.0.136	No	No	No	Yes
7.0.0.137	No	No	No	Yes
7.0.0.138	No	No	No	Yes
7.0.0.139	No	No	No	Yes
7.0.0.140	No	No	No	Yes
7.0.0.141	No	No	No	Yes
7.0.0.142	No	No	Yes	No
7.0.0.143	No	No	No	Yes
7.0.0.144	No	No	No	Yes
7.0.0.145	No	No	No	Yes
7.0.0.146	No	No	No	Yes
7.0.0.147	No	No	No	Yes
7.0.0.148	No	No	No	Yes
7.0.0.149	No	No	No	Yes
7.0.0.150	No	No	No	Yes
7.0.0.161	No	No	No	Yes

Software Version	Windows NT4.0	Windows XP	WIN 7 32 bit	WIN 7 64 bit
7.0.0.162	No	No	No	Yes
7.0.0.163	No	No	No	Yes

Microsoft Windows Operating System supported by Profile and K2 Summit system

Software Version	Profile PVS series	K2 Series	K2 Summit/Solo system	K2 Summit 3G/Solo 3G system
Windows NT4.0	Yes	No	No	No
Windows XP	Yes	Yes	Yes	Yes
WIN 7 32 bit	No	Yes	Yes	Yes
WIN 7 64 bit	No	Yes	Yes	Yes

K2-Avid™ Software Version and Avid version matrix

Software Version	Interplay Transfer engine	NewsCutter	Media Composer
7.0.0.104	1.6.2 & 1.6.4	7.5.9	3.5.9
7.0.0.105	2.1	8.x	4.x
7.0.0.112	2.2.1.4	9.x	5.x
7.0.0.126	2.2.1.4	9.x	5.x
7.0.0.127	2.3.0.3	9.5.3	5.5.3
7.0.0.128	2.4.0.2	9.5.3	5.5.3
7.0.0.129	2.5.0.3	10.0.3	6.0.3
7.0.0.130	2.5.0.3	10.0.3	6.0.3
7.0.0.131	2.5.0.3	10.0.3	6.0.3
7.0.0.132	2.5.0.3	10.0.3	6.0.3
7.0.0.133	2.5.0.3	10.0.3	6.0.3
7.0.0.134	2.5.0.3	10.0.3	6.0.3
7.0.0.135	2.5.0.3	10.0.3	6.0.3
7.0.0.136	2.5.0.3	10.0.3	6.0.3
7.0.0.137	2.5.0.3	10.0.3	6.0.3

Software Version	Interplay Transfer engine	NewsCutter	Media Composer
7.0.0.138	2.5.0.3	10.0.3	6.0.3
7.0.0.139	2.5.0.3	10.0.3	6.0.3
7.0.0.140	2.5.0.3	10.0.3	6.0.3
7.0.0.141	2.5.0.3	10.0.3	6.0.3
7.0.0.142	2.2.1.4	9.0.4	5.0.4
7.0.0.143	2.7.0.2	10.5.2	6.5.2
7.0.0.144	2.7.0.2	10.5.2	6.5.2
7.0.0.145	2.7.0.2	10.5.2	6.5.2
7.0.0.146	2.7.0.2	10.5.2	6.5.2
7.0.0.147	2.7.0.2	10.5.2	6.5.2
7.0.0.148	2.7.0.2	10.5.2	6.5.2
7.0.0.149	2.7.0.2	10.5.2	6.5.2
7.0.0.150	2.7.0.2	10.5.2	6.5.2
7.0.0.161	2.7.0.2	10.5.2 & 11.0.2	6.5.2 & 7.0.2
7.0.0.162	2.7.0.2	10.5.2 & 11.0.2	6.5.2 & 7.0.2
7.0.0.163	2.7.0.2	10.5.2 & 11.0.2	6.5.2 & 7.0.2

K2-Avid™ Software Version and Video server version matrix

Software Version	Profile PVS series	K2 series	K2 Summit system	K2 Summit/Solo system	Notes
7.0.0.104	5.4.9.1328	3.3.2.1412	7.3.8.1432	7.3.8.1432	
7.0.0.105	5.4.9.1328	3.3.2.1412	7.3.8.1432	7.3.8.1432	
7.0.0.112	No support	3.3.2.1412	7.3.8.1432	7.3.8.1432	
7.0.0.126	No support	3.3.2.1412	9.x	9.x	DNxHD not supported.
7.0.0.127	No support	3.3.2.1412	9.x	9.x	DNxHD not supported.
7.0.0.128	No support	3.3.2.1412	9.x	9.x	DNxHD not supported.
7.0.0.129	No support	3.3.2.1412	9.x	9.x	DNxHD use 3G hardware.
7.0.0.130	No support	3.3.2.1412	9.x	9.x	DNxHD use 3G hardware.

Reference to system compatibility

Software Version	Profile PVS series	K2 series	K2 Summit system	K2 Summit/Solo system	Notes
7.0.0.131	No support	3.3.2.1412	9.x	9.x	DNxHD use 3G hardware.
7.0.0.132	No support	3.3.2.1412	9.x	9.x	DNxHD use 3G hardware.
7.0.0.133	No support	3.3.2.1412	9.x	9.x	DNxHD use 3G hardware.
7.0.0.134	No support	3.3.2.1412	9.x	9.x	DNxHD use 3G hardware.
7.0.0.135	No support	3.3.2.1412	9.x	9.x	DNxHD use 3G hardware.
7.0.0.136	No support	3.3.2.1412	9.x	9.x	DNxHD use 3G hardware.
7.0.0.137	No support	3.3.2.1412	9.x	9.x	DNxHD use 3G hardware.
7.0.0.138	No support	3.3.2.1412	9.x	9.x	DNxHD use 3G hardware.
7.0.0.139	No support	3.3.2.1412	9.x	9.x	DNxHD use 3G hardware.
7.0.0.140	No support	3.3.2.1412	9.x	9.x	DNxHD use 3G hardware.
7.0.0.141	No support	3.3.2.1412	9.x	9.x	DNxHD use 3G hardware.
7.0.0.142	No support	3.3.2.1412	9.x	9.x	DNxHD use 3G hardware.
7.0.0.144	No support	3.3.2.1412	9.x	9.x	DNxHD use 3G hardware.
7.0.0.145	No support	3.3.2.1412	9.x	9.x	DNxHD use 3G hardware.
7.0.0.146	No support	3.3.2.1412	9.x	9.x	DNxHD use 3G hardware.
7.0.0.147	No support	3.3.2.1412	9.x	9.x	DNxHD use 3G hardware.
7.0.0.148	No support	3.3.2.1412	9.x	9.x	DNxHD use 3G hardware.
7.0.0.149	No support	3.3.2.1412	9.x	9.x	DNxHD use 3G hardware.
7.0.0.150	No support	3.3.2.1412	9.x	9.x	DNxHD use 3G hardware.

Software Version	Profile PVS series	K2 series	K2 Summit system	K2 Summit/Solo system	Notes
7.0.0.161	No support	3.3.2.1412	9.x	9.x	DNxHD use 3G hardware.
7.0.0.162	No support	3.3.2.1412	9.x	9.x	DNxHD use 3G hardware.
7.0.0.163	No support	3.3.2.1412	9.x	9.x	DNxHD use 3G hardware.

Supported compression formats

K2-Avid™ Build 7.0.0.104 supports

Compression formats Supported on PVS1100 with software build 5.4.9.1328

Codec	FPS 29.97	FPS 25 Hz	PCM 16 bit	PCM 24 bit	Audio Track	Ingest	Playback	Metadata
DVCAM	Yes	Yes	Yes	Yes	8	Yes	Yes	No
DVCPRO25	Yes	Yes	Yes	Yes	8	Yes	Yes	No
DVCPRO50	Yes	Yes	Yes	Yes	8	Yes	Yes	No
D10 30 Mb.	Yes	Yes	Yes	Yes	8	Yes	Yes	No
D10 40 Mb.	Yes	Yes	Yes	Yes	8	Yes	Yes	No
D10 50 Mb.	Yes	Yes	Yes	Yes	8	Yes	Yes	No

NOTE: For PVS, ingest & Send to playback are only supported if Windows XP operating system are used on the Avid editor and transfer manager.

Compression formats Supported on K2 with software build 3.3.2.1412

Codec	FPS 29.97	FPS 25 Hz	PCM 16 bit	PCM 24 bit	Audio Track	Ingest	Playback	Metadata
DVCAM	Yes	Yes	Yes	Yes	8	Yes	Yes	No
DVCPRO25	Yes	Yes	Yes	Yes	8	Yes	Yes	No
DVCPRO50	Yes	Yes	Yes	Yes	8	Yes	Yes	No
D10 30 Mb.	Yes	Yes	Yes	Yes	8	Yes	Yes	No
D10 40 Mb.	Yes	Yes	Yes	Yes	8	Yes	Yes	No
D10 50 Mb.	Yes	Yes	Yes	Yes	8	Yes	Yes	No

Compression formats Supported on K2 Summit/Solo system with software build 7.3.8.1432

Codec	FPS 29.97	FPS 25 Hz	PCM 16 bit	PCM 24 bit	Audio Track	Ingest	Playback	Metadata
DVCAM	Yes	Yes	Yes	Yes	8	Yes	Yes	No
DVCPRO25	Yes	Yes	Yes	Yes	8	Yes	Yes	No
DVCPRO50	Yes	Yes	Yes	Yes	8	Yes	Yes	No
D10 30 Mb.	Yes	Yes	Yes	Yes	8	Yes	Yes	No

Supported compression formats

Codec	FPS 29.97	FPS 25 Hz	PCM 16 bit	PCM 24 bit	Audio Track	Ingest	Playback	Metadata
D10 40 Mb.	Yes	Yes	Yes	Yes	8	Yes	Yes	No
D10 50 Mb.	Yes	Yes	Yes	Yes	8	Yes	Yes	No
DV100 1080I	Yes	Yes	Yes	Yes	8	Yes	Yes	No

K2-Avid™ Build 7.0.0.105 supports Interplay 2.1

Compression formats Supported on PVS1100 with software build 5.4.9.1328

Codec	FPS 29.97	FPS 25 Hz	PCM 16 bit	PCM 24 bit	Audio Track	Ingest	Playback	Metadata
DVCAM	Yes	Yes	Yes	Yes	8	Yes	Yes	No
DVCPRO25	Yes	Yes	Yes	Yes	8	Yes	Yes	No
DVCPRO50	Yes	Yes	Yes	Yes	8	Yes	Yes	No
D10 30 Mb.	Yes	Yes	Yes	Yes	8	Yes	Yes	No
D10 40 Mb.	Yes	Yes	Yes	Yes	8	Yes	Yes	No
D10 50 Mb.	Yes	Yes	Yes	Yes	8	Yes	Yes	No

NOTE: For PVS, ingest & Send to playback are only supported if Windows XP operating system are used on the Avid editor and transfer manager.

Compression formats Supported on K2 with software build 3.3.2.1412

Codec	FPS 29.97	FPS 25 Hz	PCM 16 bit	PCM 24 bit	Audio Track	Ingest	Playback	Metadata
DVCAM	Yes	Yes	Yes	Yes	8	Yes	Yes	No
DVCPRO25	Yes	Yes	Yes	Yes	8	Yes	Yes	No
DVCPRO50	Yes	Yes	Yes	Yes	8	Yes	Yes	No
D10 30 Mb.	Yes	Yes	Yes	Yes	8	Yes	Yes	No
D10 40 Mb.	Yes	Yes	Yes	Yes	8	Yes	Yes	No
D10 50 Mb.	Yes	Yes	Yes	Yes	8	Yes	Yes	No

Compression formats Supported on K2 Summit/Solo system with software build 7.3.8.1432

Codec	FPS 29.97	FPS 25 Hz	PCM 16 bit	PCM 24 bit	Audio Track	Ingest	Playback	Metadata
DVCAM	Yes	Yes	Yes	Yes	8	Yes	Yes	No
DVCPRO25	Yes	Yes	Yes	Yes	8	Yes	Yes	No

Codec	FPS 29.97	FPS 25 Hz	PCM 16 bit	PCM 24 bit	Audio Track	Ingest	Playback	Metadata
DVCPRO50	Yes	Yes	Yes	Yes	8	Yes	Yes	No
D10 30 Mb.	Yes	Yes	Yes	Yes	8	Yes	Yes	No
D10 40 Mb.	Yes	Yes	Yes	Yes	8	Yes	Yes	No
D10 50 Mb.	Yes	Yes	Yes	Yes	8	Yes	Yes	No
DV100 1080I	Yes	Yes	Yes	Yes	8	Yes	Yes	No

K2-Avid™ Build 7.0.0.112 to build 7.0.0.128

Compression formats Supported on PVS1100 with software build 5.4.9.1328

Codec	FPS 29.97	FPS 25 Hz	PCM 16 bit	PCM 24 bit	Audio Track	Ingest	Playback	Metadata
DVCAM	Yes	Yes	Yes	Yes	16	Yes	No	No
DVCPRO25	Yes	Yes	Yes	Yes	16	Yes	No	No
DVCPRO50	Yes	Yes	Yes	Yes	16	Yes	No	No
D10 30 Mb.	Yes	Yes	Yes	Yes	16	Yes	No	No
D10 40 Mb.	Yes	Yes	Yes	Yes	16	Yes	No	No
D10 50 Mb.	Yes	Yes	Yes	Yes	16	Yes	No	No

NOTE: For PVS, ingest is only supported if Windows XP operating system are used on the Avid editor and transfer manager.

Compression formats Supported on K2 with software build 3.3.2.1412

Codec	FPS 29.97	FPS 25 Hz	PCM 16 bit	PCM 24 bit	Audio Track	Ingest	Playback	Metadata
DVCAM	Yes	Yes	Yes	Yes	16	Yes	Yes	No
DVCPRO25	Yes	Yes	Yes	Yes	16	Yes	Yes	No
DVCPRO50	Yes	Yes	Yes	Yes	16	Yes	Yes	No
D10 30 Mb.	Yes	Yes	Yes	Yes	16	Yes	Yes	No
D10 40 Mb.	Yes	Yes	Yes	Yes	16	Yes	Yes	No
D10 50 Mb.	Yes	Yes	Yes	Yes	16	Yes	Yes	No

Compression formats Supported on K2 Summit system with software build 7.3.8.1432

Codec	FPS 29.97	FPS 25 Hz	PCM 16 bit	PCM 24 bit	Audio Track	Ingest	Playback	Metadata
DVCAM	Yes	Yes	Yes	Yes	16	Yes	Yes	Yes
DVCPRO25	Yes	Yes	Yes	Yes	16	Yes	Yes	Yes
DVCPRO50	Yes	Yes	Yes	Yes	16	Yes	Yes	Yes
D10 30 Mb.	Yes	Yes	Yes	Yes	16	Yes	Yes	Yes
D10 40 Mb.	Yes	Yes	Yes	Yes	16	Yes	Yes	Yes
D10 50 Mb.	Yes	Yes	Yes	Yes	16	Yes	Yes	Yes
DV100 1080I	Yes	Yes	Yes	Yes	16	Yes	Yes	Yes
DV100 720P	Yes	Yes	Yes	Yes	16	Yes	Yes	Yes
AVCI 720P 50Mb	Yes	Yes	Yes	Yes	16	Yes	Yes	Yes
AVCI 720P 100Mb	Yes	Yes	Yes	Yes	16	Yes	Yes	Yes
AVCI 1080 50Mb	Yes	Yes	Yes	Yes	16	Yes	Yes	Yes
AVCI 1080 100Mb	Yes	Yes	Yes	Yes	16	Yes	Yes	Yes
XDCAM-HD 1080 18Mb	Yes	Yes	Yes	Yes	16	Yes	No	Yes
XDCAM-HD 1080 25Mb	Yes	Yes	Yes	Yes	16	Yes	No	Yes
XDCAM-HD 1080 35Mb	Yes	Yes	Yes	Yes	16	Yes	No	Yes
XDCAM-HD422 1080 50Mb	Yes	Yes	Yes	Yes	16	Yes	No	Yes
XDCAM-EX 1080 35Mb	Yes	Yes	Yes	Yes	16	Yes	No	Yes
XDCAM-EX-HD422 720P 50Mb	Yes	Yes	Yes	Yes	16	Yes	No	Yes
XDCAM-EX 720P 25Mb	No	No	No	No	No	No	No	No
XDCAM-EX 720P 35Mb	Yes	Yes	Yes	Yes	16	Yes	No	Yes

K2-Avid™ Build 7.0.0.129 and up supports Interplay Engine 2.5.0.1

Codec	FPS 29.97	FPS 25 Hz	PCM 16 bit	PCM 24 bit	Audio Track	Ingest	Playback	Metadata
DVCAM	Yes	Yes	Yes	Yes	16	Yes	Yes	Yes
DVCPRO25	Yes	Yes	Yes	Yes	16	Yes	Yes	Yes
DVCPRO50	Yes	Yes	Yes	Yes	16	Yes	Yes	Yes
D10 30 Mb.	Yes	Yes	Yes	Yes	16	Yes	Yes	Yes
D10 40 Mb.	Yes	Yes	Yes	Yes	16	Yes	Yes	Yes
D10 50 Mb.	Yes	Yes	Yes	Yes	16	Yes	Yes	Yes
DV100 1080I	Yes	Yes	Yes	Yes	16	Yes	Yes	Yes

Codec	FPS 29.97	FPS 25 Hz	PCM 16 bit	PCM 24 bit	Audio Track	Ingest	Playback	Metadata
DV100 720P	Yes	Yes	Yes	Yes	16	Yes	Yes	Yes
AVCI 720P 50Mb	Yes	Yes	Yes	Yes	16	Yes	Yes	Yes
AVCI 720P 100Mb	Yes	Yes	Yes	Yes	16	Yes	Yes	Yes
AVCI 1080 50Mb	Yes	Yes	Yes	Yes	16	Yes	Yes	Yes
AVCI 1080 100Mb	Yes	Yes	Yes	Yes	16	Yes	Yes	Yes
XDCAM-HD 1080 18Mb	Yes	Yes	Yes	Yes	16	Yes	No	Yes
XDCAM-HD 1080 25Mb	Yes	Yes	Yes	Yes	16	Yes	No	Yes
XDCAM-HD 1080 35Mb	Yes	Yes	Yes	Yes	16	Yes	No	Yes
XDCAM-HD422 1080 50Mb	Yes	Yes	Yes	Yes	16	Yes	No	Yes
XDCAM-EX 1080 35Mb	Yes	Yes	Yes	Yes	16	Yes	No	Yes
XDCAM-EX-HD422 720P 50Mb	Yes	Yes	Yes	Yes	16	Yes	No	Yes
XDCAM-EX 720P 25Mb	No	No	No	No	No	No	No	No
XDCAM-EX 720P 35Mb	Yes	Yes	Yes	Yes	16	Yes	No	Yes
DNxHD 120 (HD1080i)	No	Yes	Yes	Yes	16	Yes	Yes	Yes
DNxHD 185 (HD1080i)	No	Yes	Yes	Yes	16	Yes	Yes	Yes
DNxHD 185x (HD1080i)	No	Yes	Yes	Yes	16	Yes	Yes	Yes
DNxHD 120 (HD720p)	No	Yes	Yes	Yes	16	Yes	Yes	Yes
DNxHD 185 (HD720p)	No	Yes	Yes	Yes	16	Yes	Yes	Yes
DNxHD 185x (HD720p)	No	Yes	Yes	Yes	16	Yes	Yes	Yes
DNxHD 145 (HD1080i)	Yes	No	Yes	Yes	16	Yes	Yes	Yes
DNxHD 220 (HD1080i)	Yes	No	Yes	Yes	16	Yes	Yes	Yes
DNxHD 220x (HD1080i)	Yes	No	Yes	Yes	16	Yes	Yes	Yes
DNxHD 145 (HD720p)	Yes	No	Yes	Yes	16	Yes	Yes	Yes
DNxHD 220 (HD720p)	Yes	No	Yes	Yes	16	Yes	Yes	Yes
DNxHD 220x (HD720p)	Yes	No	Yes	Yes	16	Yes	Yes	Yes

K2-Avid™ Build 7.0.0.143 and up supports Interplay Engine 2.7.0.2

Codec	FPS 29.97	FPS 25 Hz	PCM 16 bit	PCM 24 bit	Audio Track	Ingest	Playback	Metadata
DVCAM	Yes	Yes	Yes	Yes	16	Yes	Yes	Yes
DVCPRO25	Yes	Yes	Yes	Yes	16	Yes	Yes	Yes
DVCPRO50	Yes	Yes	Yes	Yes	16	Yes	Yes	Yes

Supported compression formats

Codec	FPS 29.97	FPS 25 Hz	PCM 16 bit	PCM 24 bit	Audio Track	Ingest	Playback	Metadata
D10 30 Mb.	Yes	Yes	Yes	Yes	16	Yes	Yes	Yes
D10 40 Mb.	Yes	Yes	Yes	Yes	16	Yes	Yes	Yes
D10 50 Mb.	Yes	Yes	Yes	Yes	16	Yes	Yes	Yes
DV100 1080I	Yes	Yes	Yes	Yes	16	Yes	Yes	Yes
DV100 720P	Yes	Yes	Yes	Yes	16	Yes	Yes	Yes
AVCI 720P 50Mb	Yes	Yes	Yes	Yes	16	Yes	Yes	Yes
AVCI 720P 100Mb	Yes	Yes	Yes	Yes	16	Yes	Yes	Yes
AVCI 1080i 50Mb	Yes	Yes	Yes	Yes	16	Yes	Yes	Yes
AVCI 1080i 100Mb	Yes	Yes	Yes	Yes	16	Yes	Yes	Yes
AVCI 1080p 100Mb	Yes	Yes	Yes	Yes	16	Yes	Yes	Yes
XDCAM-HD 1080 18Mb	Yes	Yes	Yes	Yes	16	Yes	No	Yes
XDCAM-HD 1080 25Mb	Yes	Yes	Yes	Yes	16	Yes	No	Yes
XDCAM-HD 1080 35Mb	Yes	Yes	Yes	Yes	16	Yes	No	Yes
XDCAM-HD422 1080 50Mb	Yes	Yes	Yes	Yes	16	Yes	No	Yes
XDCAM-EX 1080 35Mb	Yes	Yes	Yes	Yes	16	Yes	No	Yes
XDCAM-EX-HD422 720P 50Mb	Yes	Yes	Yes	Yes	16	Yes	No	Yes
XDCAM-EX 720P 25Mb	No	No	No	No	No	No	No	No
XDCAM-EX 720P 35Mb	Yes	Yes	Yes	Yes	16	Yes	No	Yes
DNxHD 120 (HD1080i)	No	Yes	Yes	Yes	16	Yes	Yes	Yes
DNxHD 185 (HD1080i)	No	Yes	Yes	Yes	16	Yes	Yes	Yes
DNxHD 185x (HD1080i)	No	Yes	Yes	Yes	16	Yes	Yes	Yes
DNxHD 120 (HD720p)	No	Yes	Yes	Yes	16	Yes	Yes	Yes
DNxHD 185 (HD720p)	No	Yes	Yes	Yes	16	Yes	Yes	Yes
DNxHD 185x (HD720p)	No	Yes	Yes	Yes	16	Yes	Yes	Yes
DNxHD 145 (HD1080i)	Yes	No	Yes	Yes	16	Yes	Yes	Yes
DNxHD 220 (HD1080i)	Yes	No	Yes	Yes	16	Yes	Yes	Yes
DNxHD 220x (HD1080i)	Yes	No	Yes	Yes	16	Yes	Yes	Yes
DNxHD 145 (HD720p)	Yes	No	Yes	Yes	16	Yes	Yes	Yes
DNxHD 220 (HD720p)	Yes	No	Yes	Yes	16	Yes	Yes	Yes
DNxHD 220x (HD720p)	Yes	No	Yes	Yes	16	Yes	Yes	Yes

Installation and configuration

Installation instructions

Prior to installing build 7.0.0.104 or 7.0.0.105 you must install *Microsoft Visual C++ 2008 SP1 Redistributable Package (x86)*. This can be downloaded from Microsoft or from the same location build 7.0.0.104 or 7.0.0.104 downloaded from. The file is named *vc redistrib_x86.exe*.

Follow the installation instructions in K2 Avid Plug-in manual PN. 071-8551-02 for detail over how to install and configure build 7.0.0.104 or 7.0.0.105.

Installation of build 7.0.0.112 is much simpler as it only support Avid Interplay Transfer engine 2.2.1.1 but it's still highly recommended you refer to the K2 Avid Plug-in manual PN. 071-8551-02.

Installing Avid Media Access

Do the following steps to install Grass Valley AMA (Avid Media Access):

1. Install SNFS client software on the device hosting the Editing application.
This provides guaranteed bandwidth, thereby ensuring smooth playback in the Editing application.
2. Use CIFS mounted v: volume on standalone K2 Summit system.
It is recommended for you to use the latest generation K2 Summit system hardware since older hardware may not have the required hardware resources to sustain smooth playback in the Editing application.
3. Use media files on removable media if the original folder and file structure are kept intact.
If the removable media cannot provide adequate edit playback, transcode or consolidate the media into one of Avids native codec formats.

Installing TServerSvc on the K2 Media Clients and K2 Summit Production Client

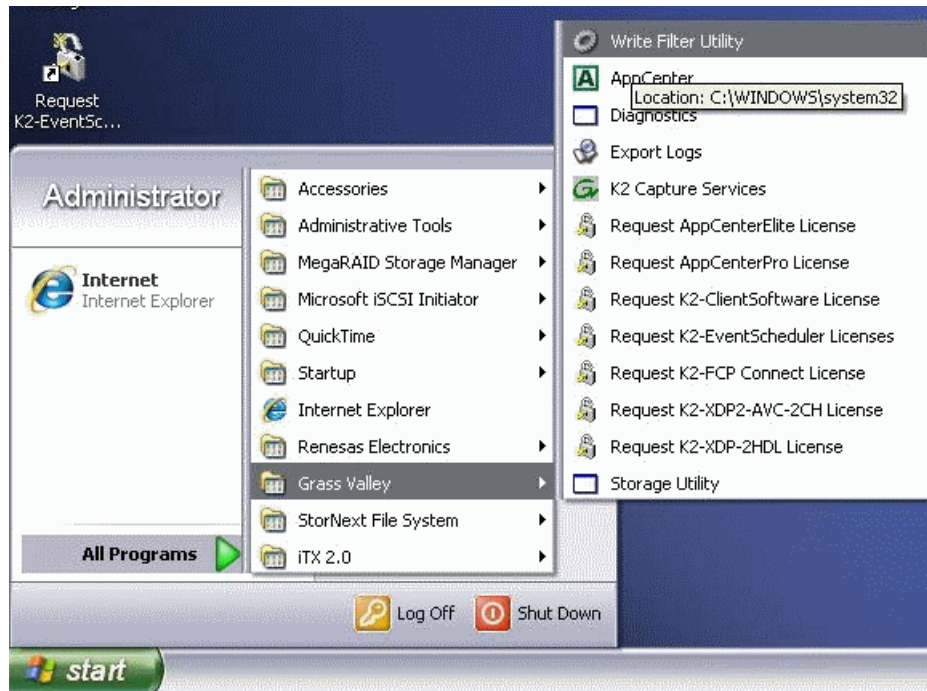
If you previously had the TserverSvc installed, then uninstall this prior to installing the new version.

- For Microsoft Windows XP Operating System, before you can install software on the K2 Summit Production Client, you need to disable the Write Filter utility.

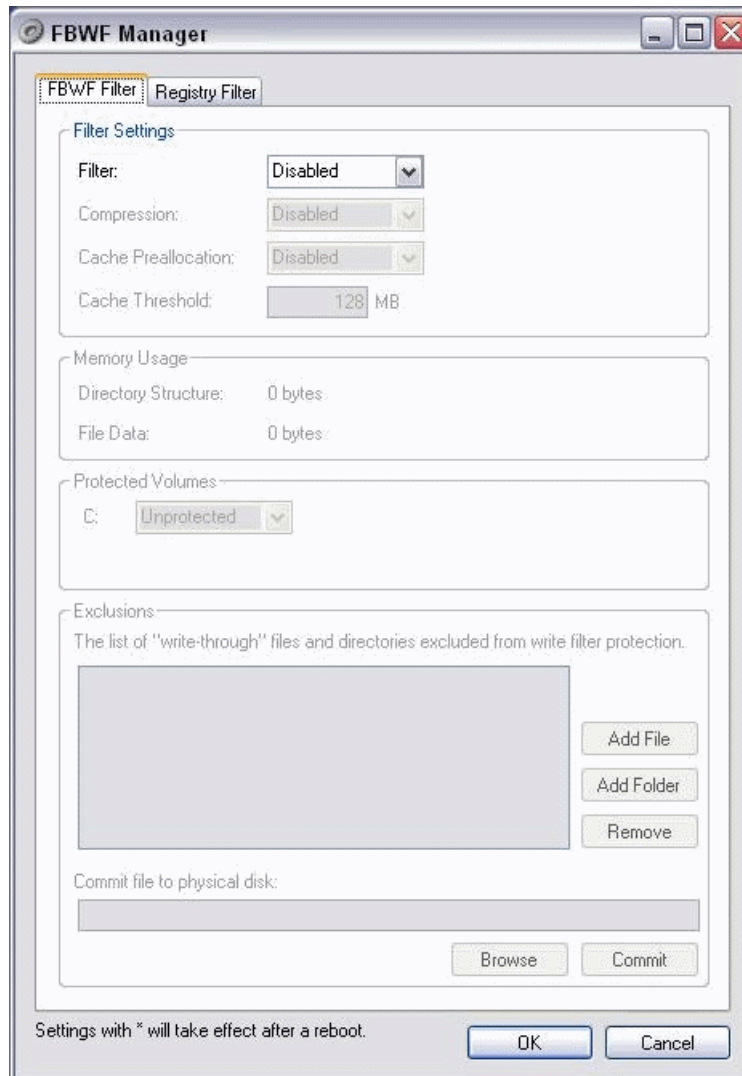
- For newer K2 Summit system with Microsoft Windows 7 (for 9.x) that use McAfee embedded security, you need to put the system in Update mode before installing the new software.

The TServerSvc can be installed on standalone K2 Media Clients, K2 Summit Production Clients, K2 Summit 3G Production Clients or K2 Media Servers (with the role of FTP servers) when configuring systems with external (shared) storage.

1. Navigate to the Write Filter Utility and launch the application.



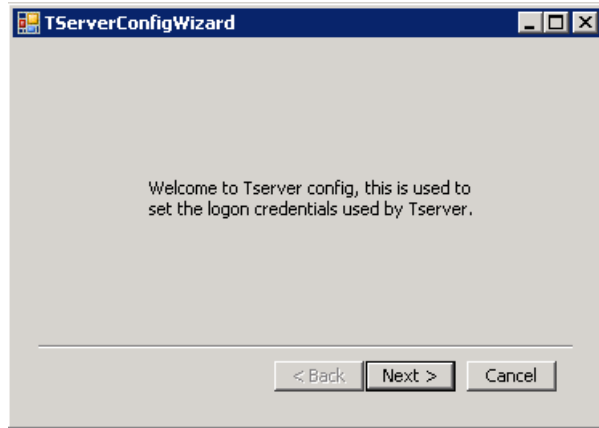
- Under Filter Settings, set the Filter to **Disabled** as shown.



If the filter setting is changed then you will be requested to reboot the K2 Summit Production Client before proceeding with the K2Tserver installation.

- Browse the folder with the installers and access the folder \K2Tserver\.
- Double-click Setup.exe.
- Click **Next** in the "Welcome to the InstallShield Wizard for Grass Valley K2 Avid™ K2 Tserver" dialog box.
Next the License Agreement is displayed.
- Select "I accept the terms in the License agreement" and click **Next**.
- Click **Install** to start the installation or **Cancel** in the "Ready to install" dialog box.
- The status dialog then displays the progress of the installation.

9. The following Configuration Wizard is then displayed.

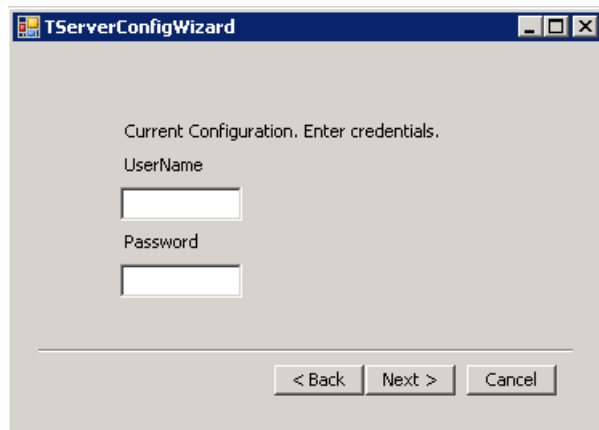


- This is used to override the default credentials.

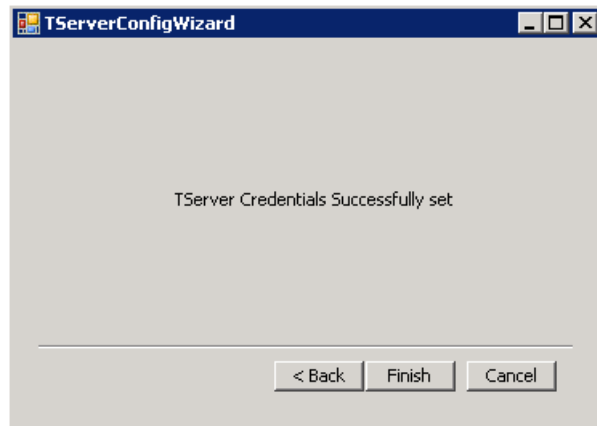
10. Click **Next** to walk through the wizard.

11. To set the credential using the wizard, do one of the following:

Options	Description
Default credentials	<ul style="list-style-type: none">• Username: Administrator• Password: adminGV!
If installing on a K2 Summit system version earlier than 8.x, use this default credentials	<ul style="list-style-type: none">• Username: Administrator• Password: adminK2



- Click **Next** and **Finish** to complete the wizard.



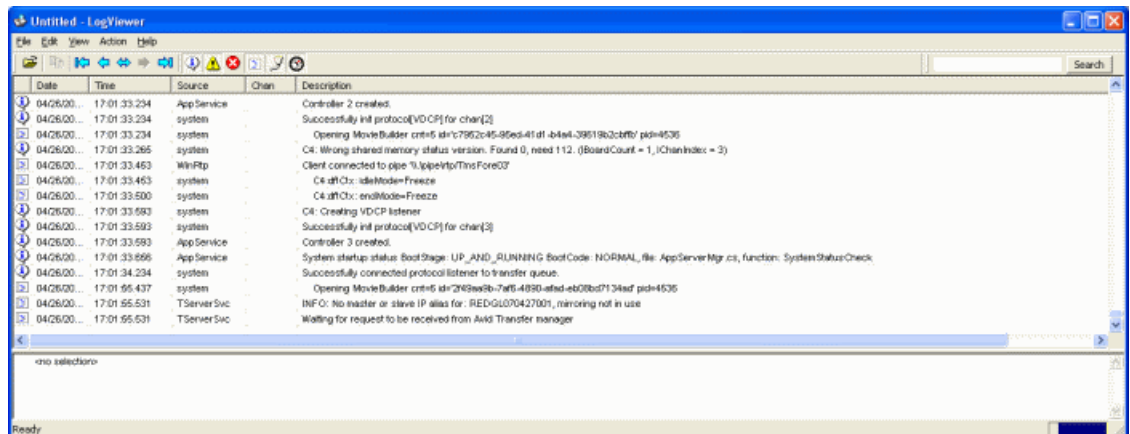
This wizard can be run at any time from `C:\profile\TserverConfigWizard.exe`.

- Click **Finish** when installation completes in the "InstallShield Wizard Completed" dialog box.

Verify TserverSvc is installed correctly

- On the K2 Media Client or K2 Summit Production Client, open the Logviewer program in `c:\profile\log.exe`.

NOTE: Make sure no filters are selected.
- Then look for the following TServerSvc messages.
 - INFO: No master or slave IP alias for: DeviceHostName, mirroring not in use.
 - Waiting for request to be received from Avid Transfer manager.



This indicates the service is installed and running.

- Repeat the above steps for each K2 Media Client or K2 Summit Production Client you wish to use.

NOTE: Default username administrator and password adminK2 are used by the Tserver. You can overwrite the default credentials by running `C:\profile\TserverConfigWizard.exe`.

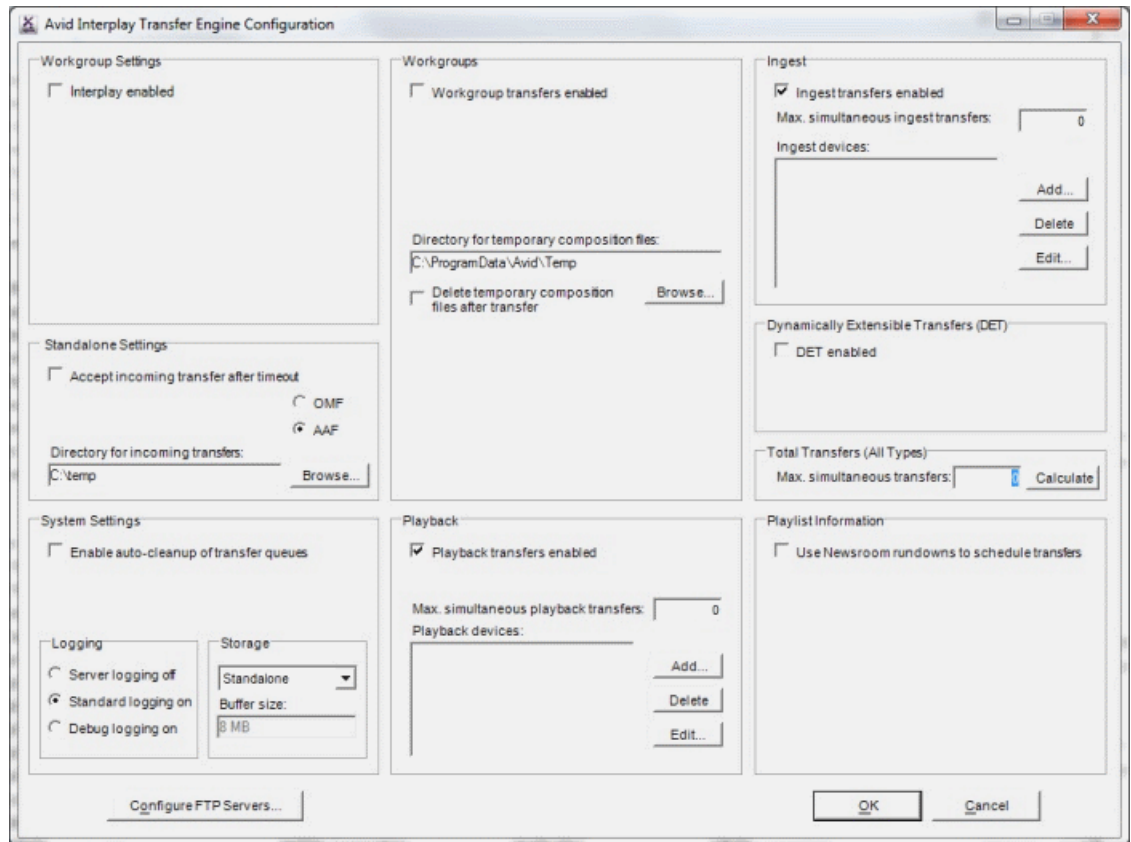
Prerequisites for installation of K2-Avid™ Software on Avid devices

1. NewsCutter® or MediaComposer® software is installed on editor clients.
2. Each Editor has Avid Interplay Transfer Client software installed.
3. Avid Interplay Transfer Engine software is installed.
4. Each Editor is configured for Transfers.
5. Transfer Engine has been configured with a valid Storage Type.
6. SNFS client software has been installed and configured if GV AMA is used to link to media files on GV SAN FS (K2 media file system).

Configuring Avid Interplay Transfer Engine

The following configuration is for a standalone Interplay Transfer Engine.

1. Open the Avid Interplay Transfer Engine Configuration by doing one of the following:
 - Click the icon on the desktop.
 - Find the configuration in *C:\Program Files\Avid\Avid Interplay Transfer Engine\TRANSFERMGRSERVERCONFIG\tmconfig.exe*.



2. Set the **Standalone Settings** by doing the following:
 - a) Select the **Accept Incoming transfers after timeout** check box.
 - b) Select **AAF**.
 - c) Select the directory for incoming transfers.
3. Set the **System Settings** by doing the following:
 - a) Select the **Enable auto-cleanup of transfer queues** check box.
 - b) Set the Storage Type to **Standalone**.
4. Set the **Playback** by doing the following:
 - a) Select the **Playback transfers enabled** check box.
 - b) Set the **Max simultaneous playback transfers** to 4.
 - c) Do not select the **Long GOP transfers enabled** check box.
5. Set the **Ingest** by doing the following:
 - a) Select the **Ingest transfers enabled** check box.
 - b) Set the **Max simultaneous ingest transfers** to 4.
6. Click **Calculate** to update the Max. Simultaneous Transfers in the **Total Transfers (All Types)** section.
7. Click **OK** to save the configuration or click **Cancel** to discard the changes.
8. If the Interplay engine is running, terminate and restart to use the new configuration.

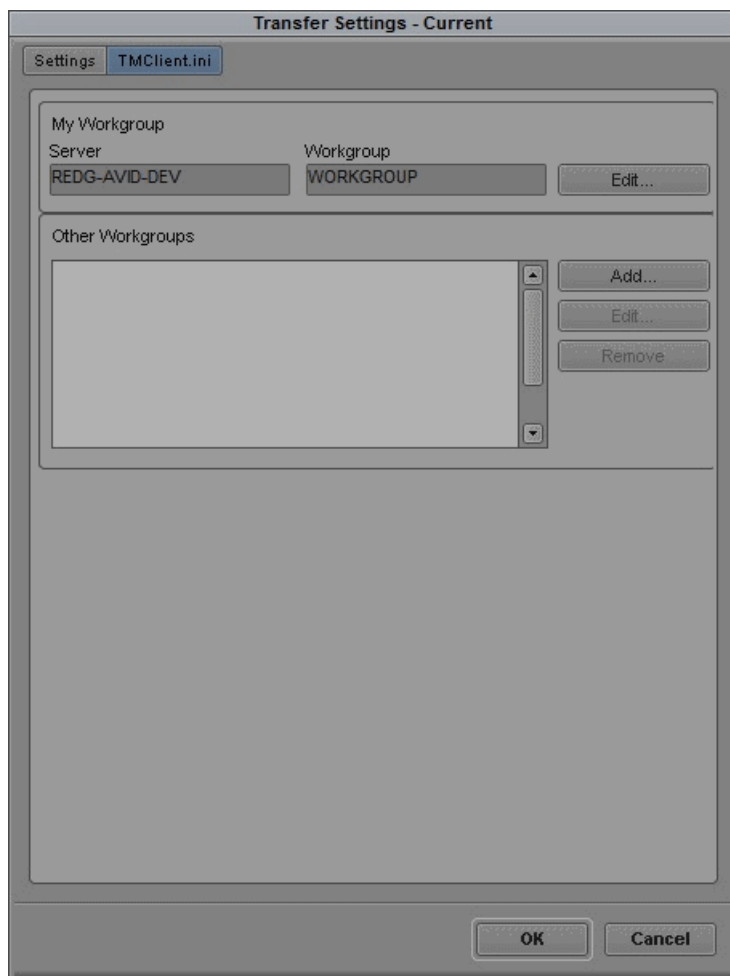
Configuring the Avid Editor for Transfers

The following configuration uses the Avid Media Composer.

1. Start the Avid Media Composer.
2. Click the **Edit** menu, and then select **Preferences**.
3. Select **Transfer** under the Settings tab.
4. In the Send To Playback, locate the Output Audio Mix and select **Direct channel output or Stereo output**.
5. Click on the TMClient.ini tab and click **Add**.

6. Add the host name of the device which is running the Avid Interplay Transfer Engine. In this example **REDG-AVID-DEV**, and set the Workgroup to **WORKGROUP**.

NOTE: *The names must match the names used to configure the Avid Interplay Transfer Engine.*



7. Click **OK** to save and exit.
8. Restart the Editor.
Configuration of the editor is complete.

Installing the K2AvidDHM software

Do the following steps to install the K2AvidDHM software on the PC that runs the Avid Interplay Transfer Engine.

1. Browse the folder of installers and navigate to `\K2AvidDhm\Disk1\`.
2. Double-click **Setup.exe**.
3. Click **Next** in the "Welcome to the InstallShield Wizard for K2AvidDHM" dialog box.

The License Agreement dialog box is displayed.

4. Select the **I accept the terms in the License agreement** check box.
5. Take the time to read the information provided on the license agreement and click **Next**.
6. Click **OK** if you get the following message when you are attempting to install on a device which do not have any Avid Interplay Transfer Engine installed.



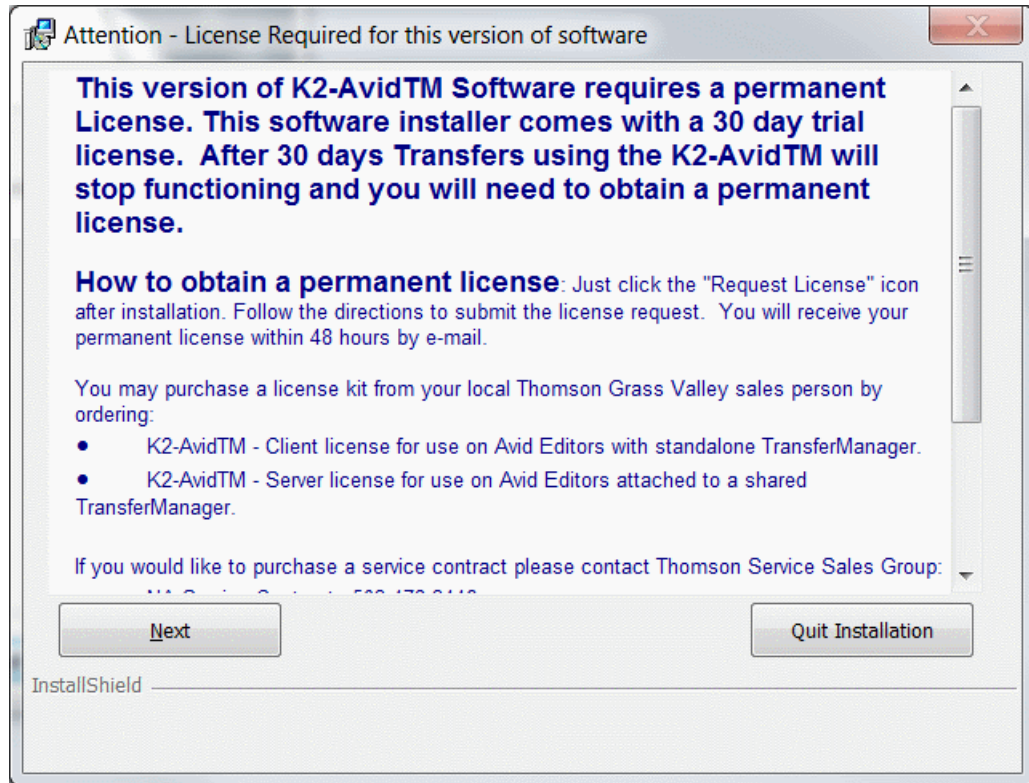
NOTE: *Ensure that you have installed Avid Interplay Transfer.*

Likewise a message will be displayed if both Transfer Manager and Interplay Transfer engine are installed.



7. Click **Install** to start the installation in the "Ready to Install" dialog box.

8. Do take the time to read the information provided in the "License Required for this version of software" dialog box and click **Next**.



The status dialog then displays the progress of the installation.

9. Click **Finish** when the install is completed.
10. Restart the Avid Interplay Transfer Engine to complete the DHM installation.

Verify K2 Avid DHM is installed correctly

1. Start the License Manager and verify licenses are installed.
2. On the Avid Transfer manager / Interplay engine device, locate the License manager icon on the desktop and double click to start this.
3. If you are upgrading from a previous version and a permanent license was previously installed, then verify that it is still present. Otherwise add the license which was backed up previously and verify that it is still valid.

4. If you do not have a permanent license, check if a temporary license was installed during the setup. Otherwise you can add a temporary license which can be found in:

Options	Description
32-bit Operating System	<i>C:\Program Files\Thomson Grass Valley\SabreTooth\TemporaryLicense.txt</i>
64-bit Operating System	<i>C:\Program Files (x86)\Grass Valley\SabreTooth</i>

NOTE: *You will need a permanent license to operate beyond the 30 day trial period. Details on how to obtain permanent license can be found elsewhere in this manual.*

Installing the K2 Avid Ingest software

1. Browse the folder of installers and navigate to `\K2ingest\Disk1\`.
2. Double-click **Setup.exe**.
3. Click **Next** in the "Welcome.." dialog box.

4. Click **OK** if you get one of the following below:

Please refer to [Prerequisites for installation of K2-Avid™ Software on Avid devices](#) on page 30 if you encounter any of the following error warnings.

- a) You may get the following message if you are attempting to install on a device which does not have an Avid Editor installed.



- b) You may get the following message if you are attempting to install on a device which has both AvidNewsCutter and Avid MediaComposer installed.



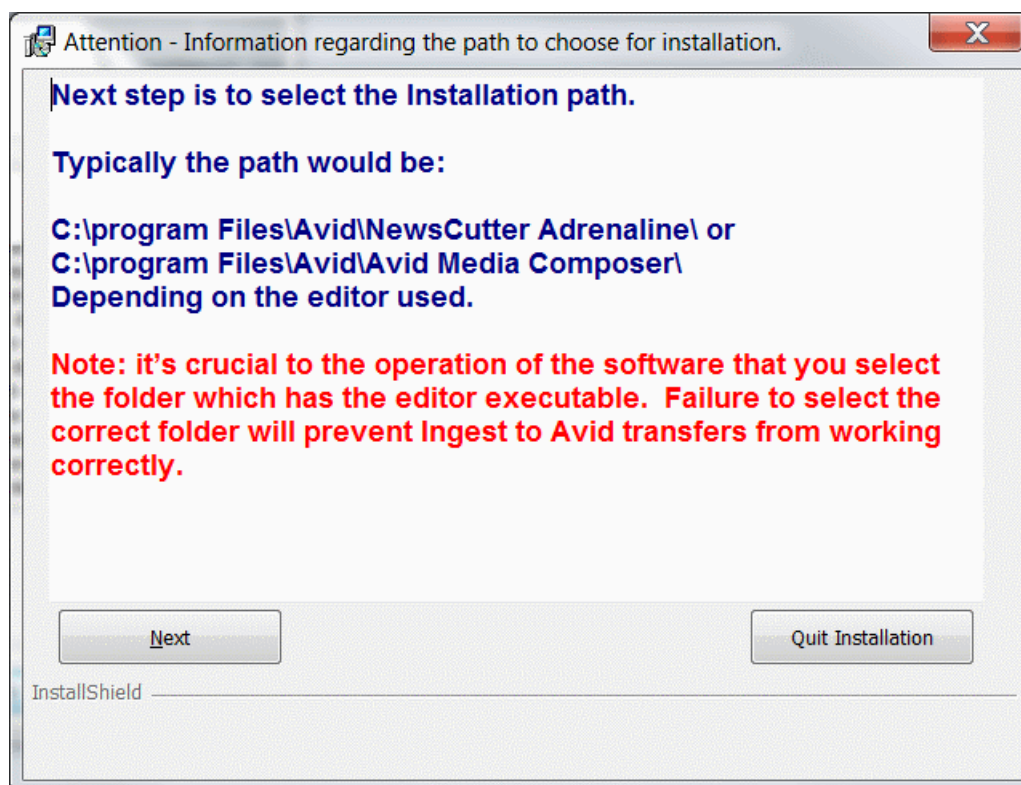
- c) Or if there is no TransferManager Clients or Avid Interplay Transfer Clients installed, you may see the following message.



The "License Agreement" dialog box is displayed.

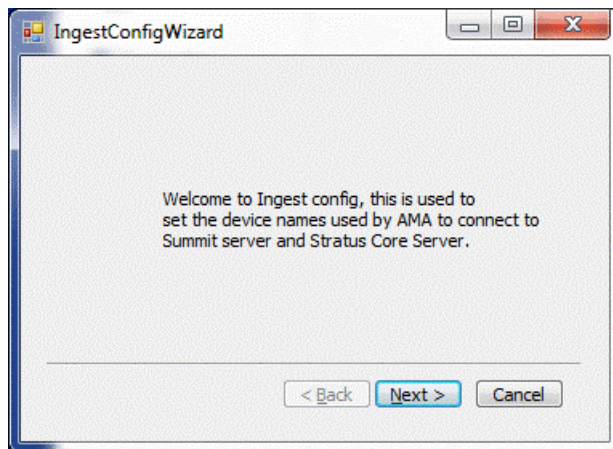
5. Select the **I accept the terms in the License agreement** check box.
6. Take the time to read the information provided on the license agreement and click **Next**.
7. Select the installation path. Take a moment to find out where the Avid Editor executable is located.

NOTE: *The Install program will attempt to locate the Avid editor executable and use the path found.*



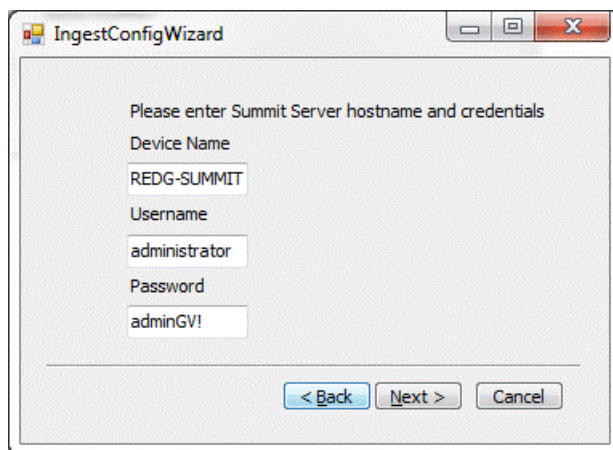
8. Click **Next**.
- The next dialog box displays the path found.
9. Verify that the path is correct, and click **Next**. Otherwise, click **Change** and browse to the correct destination folder.
 10. Click **Install** to begin the installation.
- The status dialog then displays the progress of the installation.

11. The following Configuration Wizard is then displayed.

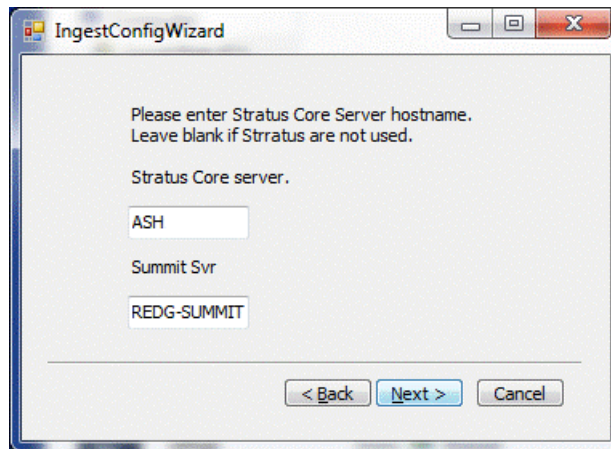


This is used to set the hostname of the K2 Media Server (FSM) used for AMA linking.

12. If GV STRATUS is used, you need to set the Core Server hostname and the hostname of the device the K2 Summit system MDI is connecting to.
13. Click **Next** to walk through the wizard.
14. Enter the hostname of the FSM and credentials if AMA is used, otherwise leave blank and click **Next**.

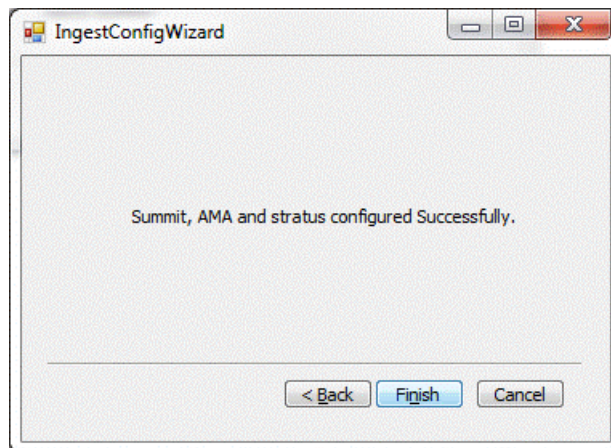


15. Enter the hostname of the Core Server and host name of the K2 Summit server used by the K2 Summit system MDI.



Leave the space blank if GV STRATUS integration is not used.

16. Click **Next** to complete this Wizard.



This can be run at any time from `C:\Program Files\Avid\Avid Media Composer\IngestConfig64.exe`.

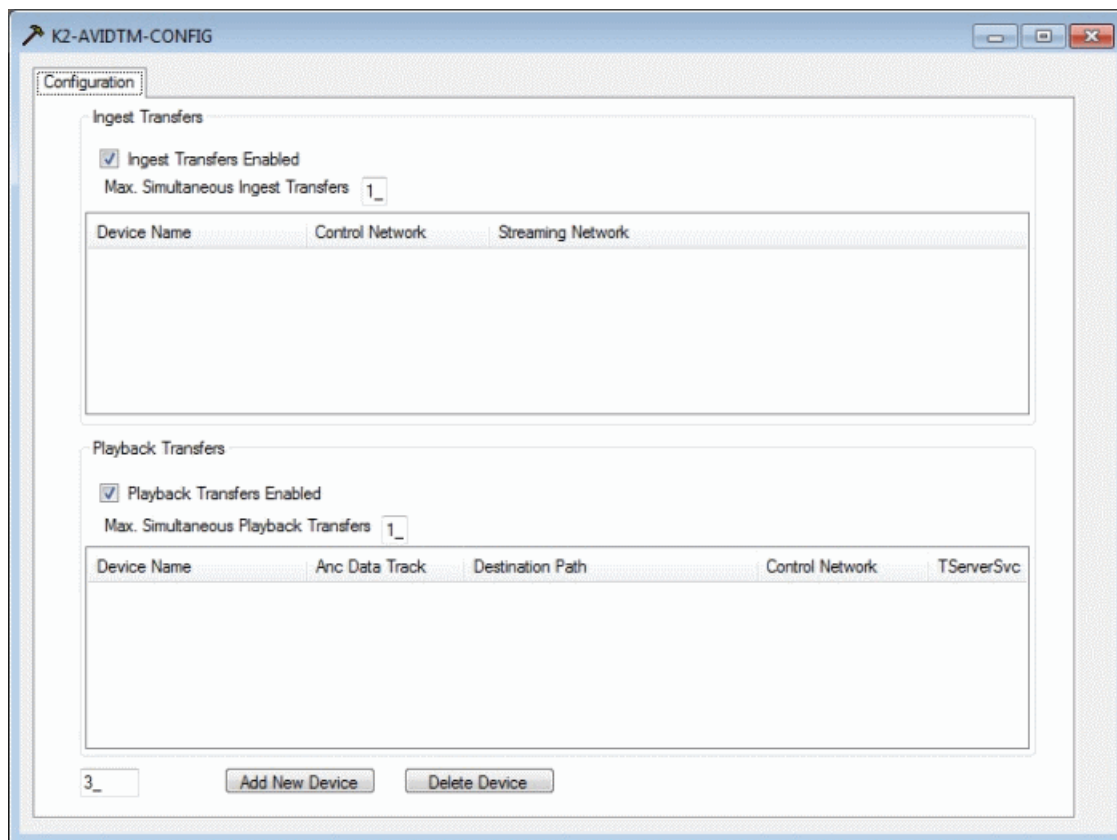
17. Click **Finish** when the install is completed.

NOTE: Default username "Administrator" and password "adminGV!" are used by the Ingest software.

Add and configure devices for Ingest and Playback

1. Start the K2-AVIDTM-CONFIG.

If there are no configured devices, it will appear as shown below.

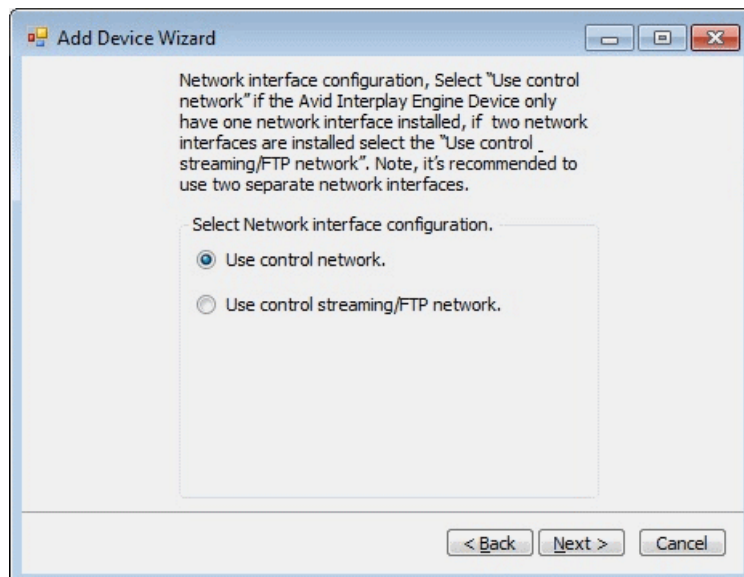


2. Click **Add New Device**.

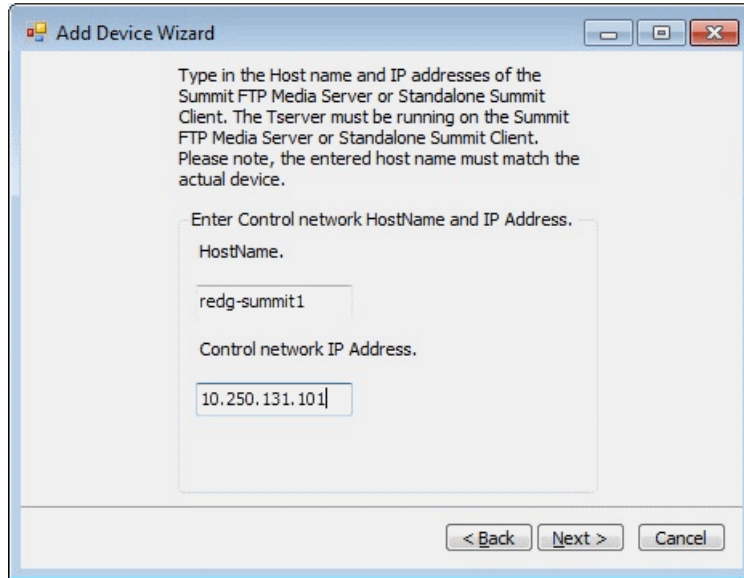
The Add Device Wizard displays.



3. Select the type of network configuration.

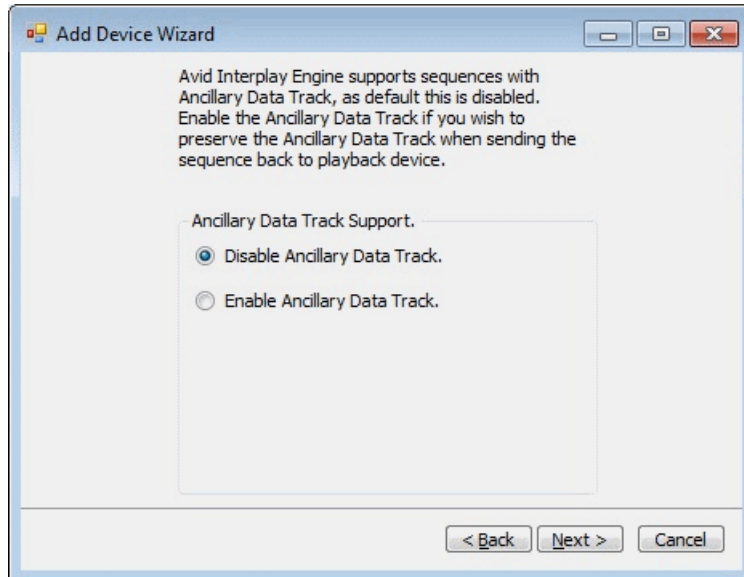


4. Enter the host name of the standalone K2 Summit system or the host name of the K2 Media Server with the role of FTP server.



NOTE: *The host name used must match the actual device name.*

5. Select to enable Ancillary Data Track support if you want to preserve Ancillary data when sending sequences back to the playback device.

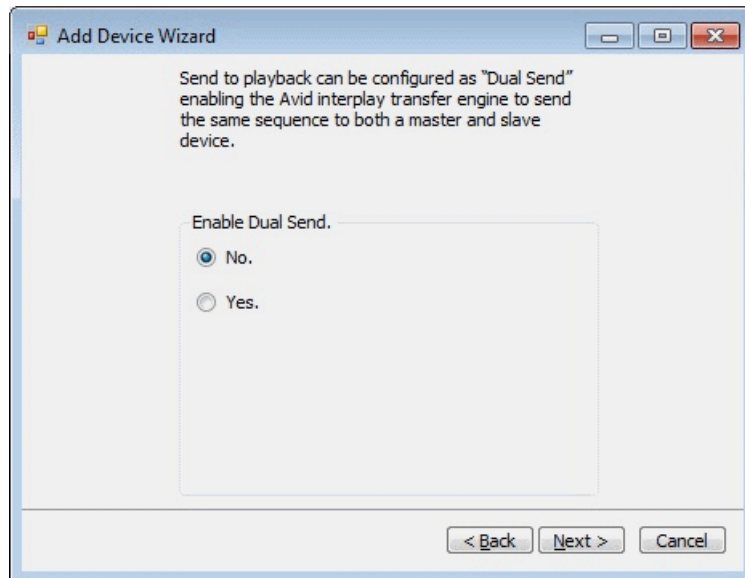


6. Select **Yes**, if you wish to send back to a different folder than default.



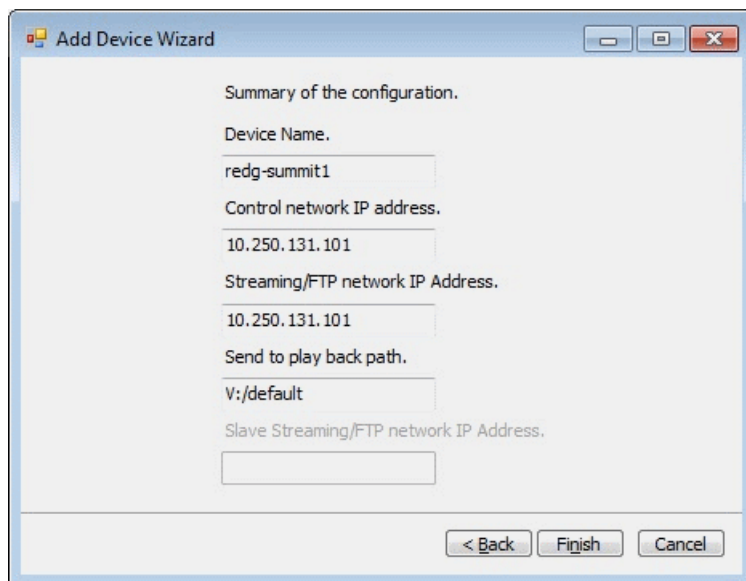
NOTE: You need to run the wizard twice when overwriting the folder. Once with no overwrite and then once more for the overwrite.

7. Select **Yes** if you want dual send support.



8. Click **Next**.

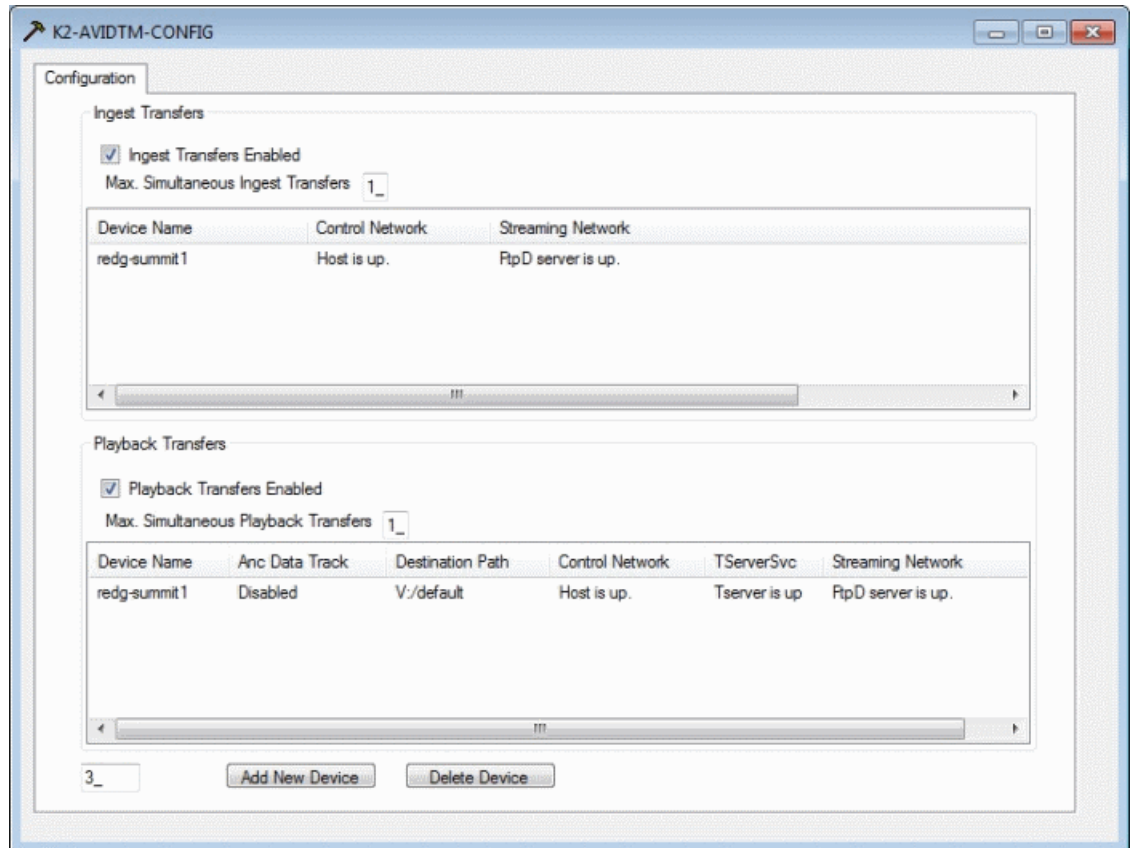
The summary page displays.



9. Click **Finish** to exit from the Add Device Wizard.

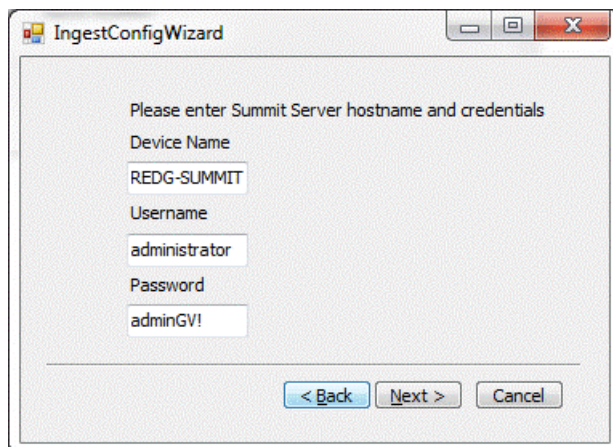
The Configuration page displays.

NOTE: This may take several seconds as the program verifies the network connection, if Tserver and FtpD is up.

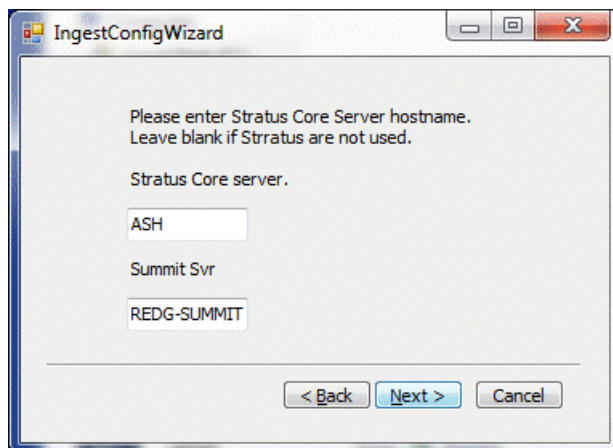


10. If GV STRATUS is used, set the GV STRATUS Core Server hostname and the hostname of the device to which the GV STRATUS K2 Summit system MDI connects.
11. Click **Next** to walk through the wizard.

12. Enter the hostname of the FSM and credentials if AMA is used, otherwise leave blank and click **Next**.

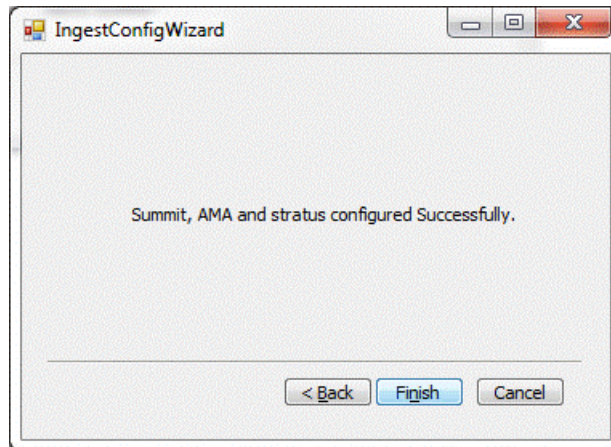


13. Enter the hostname of the Core Server and host name of the K2 Summit server used by the K2 Summit system MDI.



Leave the space blank if GV STRATUS integration is not used.

14. Click **Next** to complete this Wizard.



This can be run at any time from `C:\Program Files\Avid\Avid Media Composer\IngestConfig64.exe`.

15. Click **Finish** when the install is completed.

NOTE: Default username "Administrator" and password "adminGV!" are used by the Ingest software. You can overwrite the default credentials used by the Ingest software. This is done in the registry in the following location: `HKEY_LOCAL_MACHINE\SOFTWARE\Grass Valley Group\Applications\K2-AvidTM\Setup` and for the `K2-AvidExplorer` at `HKEY_LOCAL_MACHINE\SOFTWARE\Grass Valley Group\Applications\K2-AvidTM\K2-AvidExplorer`.

Using the GV AMA plug-in

Before you can link to any files, verify the following:

- Check the GV AMA plug-ins are installed. At the Editing software, select **TOOLS** and choose **Console** to call up the console window. At the bottom of the window, type `AMA_ListPlugins`. A report is displayed below:

```
AMA PLUG-IN NAME COMPANY NAME VERSION
```

- Avid MXF MSP Plug-In Avid Technology, Inc. 1.1
 - Sphere (5850 1.1.5964899) Avid Technology, Inc. 1.1
 - AS-02 Plug-In Avid Technology, Inc. 1.2
 - AS-11 Plug-In Avid Technology, Inc. 1.0
 - MSP_GrassValley for 64Bit OS Grass Valley USA, LLC. 0.3
 - MSP_MXF Plug-In Avid Technology, Inc. 1.9
 - QuickTime Plug-In Avid Technology, Inc. 1.3
 - WaveAiff Plug-In Avid Technology, Inc. 1.0
- Verify the `MSP_GrassValley` and `MVP_GrassValley` plug-ins are listed.
 - Confirm the plug-ins are correctly installed and configured.

- To verify and configure the volumes, the volume must be mounted and mapped using driver letter *v*: before the GV AMA plug-ins can be used to link any files.

If SNFS client are used: SNFS client mounting are used if K2 SAN's are used. Verify the SNFS client are installed and configured to use driver letter *v*:

If CIFS client are used: CIFS client mounts are used when working on standalone K2 Summit system. The K2 Summit system *v*: drive must be shared at root level with the Share Name **V** before this drive can be mounted using the command shown below: The volume is mounted, using the following command. net use *v*: \\SummitHostname\V /USER:SummitHostname\administrator /PERSISTENT:YES.

If Removable drives are used: If the original media on the K2 Summit system existed in *v*: \media\default\Myclip.cmf \, then the removable drive should have the same path *media\default\Myclip.cmf * and all the media files should reside in the *Myclip.cmf* folder.

The GV AMA plug-in supports linking to files in two ways:

- Manually link to files using **FILE | AMA LINK**.
- Manually link to volumes (folders) **FILE | LINK TO AMA VOLUMES**.

1. To manually link to files using **FILE | AMA LINK**, do the following:

- a) Open and select the bin which you want the master clip or sequence to appear.
- b) Select **FILE | AMA LINK** and navigate to the filepath and select the file or files for linking.

The linked files appear as master clips or sequences.

NOTE: When you link to files, you have the choice of linking to XML or idx files. Linking to XML files creates a master clip or sequence which references all the media files and metadata as described by the XML. Linking to IDX files creates master clips with just one track. Timecode and data files are not supported.

2. To manually link to volumes (folders) **FILE | LINK TO AMA VOLUMES**, do the following:

- a) Select **FILE | LINK TO AMA VOLUMES** and file type as below:
 - Summit Media Volume Plug-in (MVP) (Folder) for volume linking.
 - Summit (*.XML *.IDX) for Link to media files.

- b) Navigate to the required folder, say *v:\media\default*.

A new bin is then created and populated with all the assets found in folder. The linked asset appears as master clips or sequences.

- c) To limit the number of assets in each folder, use the **Link to files** and select only the files needed.

When you link to volumes, only the content within a folder can be linked. All the assets within the selected folder will be enumerated and linked. Master clips or sequences are then created using all the media files and metadata as described by each of the assets XML found in the folder.

NOTE: When you use AMA linked files and you are done editing the sequence, you must consolidate or transcode the sequence before this can be sent to the playback device using Avid Interplay transfer engine. Consolidate or transcode of the sequence will also share the media / sequence amongst a pool of Avid Media Composer or News Cutters sharing the same Avid storage device as the process of consolidating / transcoding checks the media into Avid Interplay.

Operational considerations

Operational considerations

- Transfers of Mixed formats video and audio are not supported by the DHM.
- Frame chase editing (Media under construction) are reported as *In-progress* clips by the AMA plug-in. They appear in the bin with a special AMA FrameChase icon. *In-progress* clips can be refreshed using the *Refresh in-progress AMA clips* command on the Bin menu.

Trademarks and Agreements

Trademarks

Grass Valley, GV STRATUS, GV Director, K2, Aurora, Summit, ChannelFlex, Dyno, Solo, ClipStore, Infinity, Turbo, Profile, Profile XP, NetCentral, NewsBrowse, NewsEdit, NewsQ, NewsShare, NewsQ Pro, and Media Manager are either registered trademarks or trademarks of Grass Valley USA, LLC. in the United States and/or other countries. GRASS VALLEY® is a registered trademark. Grass Valley USA, LLC. products are covered by U.S. and foreign patents, issued and pending. Additional information regarding Grass Valley USA, LLC. trademarks and other proprietary rights may be found at www.grassvalley.com. Other trademarks and logos used in this document are either registered trademarks or trademarks of the manufacturers or vendors of the associated products, such as Microsoft® Windows® operating system, Windows Media® player, Internet Explorer® internet browser, and SQL Server™. QuickTime and the QuickTime logo are trademarks or registered trademarks of Apple Computer, Inc., used under license therefrom. AVCHD and the AVCHD logo are trademarks of Panasonic Corporation and Sony Corporation. Avid DNxHD is a registered trademark of Avid Technology, Inc., a Delaware corporation.



JPEG acknowledgment

This software is based in part on the work of the Independent JPEG Group.

