

K2 TimeDelay Version 7.1 Release Notes & Install Instructions

These release notes contain the latest information about the K2 TimeDelay software. The information in these release notes applies to both K2 TimeDelay installed on K2 systems using local storage and K2 systems using direct connect or shared storage.

For additional information see the *K2 TimeDelay User Manual*. The latest Grass Valley documentation can also be found online at:

<http://www.grassvalley.com/docs/>

Table of Contents

<i>Grass Valley Product Support</i>	2
<i>What's new in K2 TimeDelay/ K2 software version compatibility</i>	4
<i>K2 TimeDelay features</i>	4
<i>Installing K2 TimeDelay</i>	4
<i>Licensing K2 TimeDelay</i>	5
<i>Requesting a license</i>	5
<i>Adding a license</i>	9
<i>Deleting licenses</i>	10
<i>Archiving licenses</i>	10
<i>Operation considerations</i>	10
<i>Known problems</i>	11

Copyright © Grass Valley, Inc. All rights reserved. Printed in the United States of America. Portions of software © 2000 – 2009, Microsoft Corporation. All rights reserved. This document may not be copied in whole or in part, or otherwise reproduced except as specifically permitted under U.S. copyright law, without the prior written consent of Grass Valley, Inc., P.O. Box 59900, Nevada City, California 95959-7900. This product may be covered by one or more U.S. and foreign patents.

Product options and specifications subject to change without notice. The information in this manual is furnished for informational use only, is subject to change without notice, and should not be construed as a commitment by Grass Valley, Inc. Grass Valley, Inc. assumes no responsibility or liability for any errors or inaccuracies that may appear in this publication.

Grass Valley, K2, Aurora, Summit, Solo, Dyno, Turbo, Profile, Profile XP, NetCentral, NewsBrowse, NewsEdit, NewsQ, NewsShare, NewsQ Pro, and Media Manager are either registered trademarks or trademarks of Grass Valley, Inc. in the United States and/or other countries. Grass Valley, Inc. products are covered by U.S. and foreign patents, issued and pending. Additional information regarding Grass Valley, Inc.'s trademarks and other proprietary rights may be found at www.grassvalley.com. Other trademarks and logos used in this document are either registered trademarks or trademarks of the manufacturers or vendors of the associated products, such as Microsoft® Windows® operating system, Windows Media® player, Internet Explorer® internet browser, and SQL Server™. QuickTime and the QuickTime logo are trademarks or registered trademarks of Apple Computer, Inc., used under license therefrom.

Grass Valley Product Support

To get technical assistance, check on the status of a question, or to report new issue, contact Grass Valley Product Support via e-mail, the Web, or by phone or fax.

Web Technical Support

To access support information on the Web, visit the product support Web page on the Grass Valley Web site. You can download software or find solutions to problems.

World Wide Web: <http://www.grassvalley.com/support/>

Technical Support E-mail Address: gvgtechsupport@grassvalley.com.

Telephone Support

Use the following information to contact Product Support by phone.

International Support Centers

Our international support centers are available 24 hours a day, 7 days a week.

Support Center	Toll free	In country
France	+800 80 80 20 20	+33 1 48 25 20 20
United States	+1 800 547 8949	+1 530 478 4148

Authorized Local Support Representative

A local support representative may be available in your country. To locate a support center during normal local business hours, refer to the following list. This list is regularly updated on the website for Grass Valley Product Support (<http://www.grassvalley.com/support/contact/phone/>).

After-hours local phone support is also available for warranty and contract customers.

Region	Country	Telephone
Asia	China	+86 10 5883 7575
	Hong Kong, Taiwan, Korea, Macau	+852 2531 3058
	Japan	+81 3 6848 5561
	Southeast Asia - Malaysia	+603 7492 3303
	Southeast Asia - Singapore	+65 6379 1313
	India	+91 22 676 10300
Pacific	Australia	1 300 721 495
	New Zealand	0800 846 676
	For callers outside Australia or New Zealand	+61 3 8540 3650
Central America, South America	All	+55 11 5509 3440
North America	North America, Mexico, Caribbean	+1 800 547 8949 +1 530 478 4148

Region	Country	Telephone
Europe	UK, Ireland, Israel	+44 118 923 0499
	Benelux – Netherlands	+31 (0) 35 62 38 421
	Benelux – Belgium	+32 (0) 2 334 90 30
	France	+800 80 80 20 20 +33 1 48 25 20 20
	Germany, Austria, Eastern Europe	+49 6150 104 444
	Belarus, Russia, Tadzhikistan, Ukraine, Uzbekistan	+7 095 258 09 20 +33 (0) 2 334 90 30
	Nordics (Norway, Sweden, Finland, Denmark, Iceland)	+45 40 47 22 37 +32 2 333 00 02
	Southern Europe – Italy	Rome: +39 06 87 20 35 28 ; +39 06 8720 35 42. Milan: +39 02 48 41 46 58
	Southern Europe – Spain	+34 91 512 03 50
	Switzerland	+41 56 299 36 32
Middle East, Near East, Africa	Middle East	+971 4 299 64 40
	Near East and Africa	+800 80 80 20 20 +33 1 48 25 20 20

What's new in K2 TimeDelay/ K2 software version compatibility

The K2 TimeDelay version 7.1 is compatible with the K2 system software 7.1 release or higher.

For more information on K2 system software compatibility, see *K2 Release Notes and Upgrade Instructions*. For general information about K2 software, refer to the *K2 System Guide*.

K2 TimeDelay features

- K2 TimeDelay runs on the K2 client or K2 Solo Media Server.
- Maximum delay is 23:59:59;29
- Minimum delay is 15 seconds for a K2 Solo Media Server or K2 client with local storage (standalone) and 25 seconds for a K2 system with direct connect or shared storage.
- When play is paused, the delay does not increase. Using the **Stop** button pauses playback; when playback is resumed, play jumps to the same delay offset that you had specified.
- You can modify the delay settings so that a playback channel rejoins the delay at the newly specified time, or you can reschedule the Start At time for playback.
- There can be up to two TimeDelay sessions running on a given K2 system, depending on the K2's configuration.
- The audio levels for the Record or Play channels can be adjusted independently.
- TimeDelay can be started automatically at a specific timecode value, regardless of the timecode source.
- The record buffer is saved as a clip. This clip can be used in other applications.
- If the video source is disrupted, TimeDelay maintains correct delay positions by inserting black video in the recording for the length of the disruption.
- TimeDelay remembers previous configuration settings. For example, if you configure a TimeDelay session with three Play channels, the next time you start a TimeDelay session it will automatically default to three Play channels.

Installing K2 TimeDelay

K2 TimeDelay can only be installed and run on a local K2 system. TimeDelay comes with a trial license. For more information on licensing, see "[Licensing K2 TimeDelay](#)".

To install K2 TimeDelay you must be logged on as Administrator. For information about logging on as Administrator, see the *K2 System Guide*.

1. Insert the K2 TimeDelay software CD in the K2 system where you want to install K2 TimeDelay or download the software from the FTP site.
2. In the 7.1 folder, double click on the *Setup.exe* file to run the file, and follow the install instructions.

Licensing K2 TimeDelay

To use the K2 TimeDelay software past the trial period, you need to get a permanent license from Grass Valley. Licenses are requested through the TimeDelay License Wizard and managed through the SabreTooth License Manager, which are installed with TimeDelay software. The TimeDelay License Wizard and SabreTooth License Manager must be on the K2 client or K2 Solo Media Server. K2 TimeDelay requires one license for each Record channel.

License information is stored in text files that you can manage just like any other file on your system. Licenses are unique to the system for which they are requested and cannot be used on any other machine.

NOTE: Licenses are based on your system's unique identifier, which is partially derived from your system's Media Access Control (MAC) address. If you change your system's MAC address by performing operations such as changing the System Processor card, or changing an Ethernet card, you must obtain a new license based on the new MAC address.

You can use the K2 TimeDelay License Wizard for the following task:

- [“Requesting a license” on page 5](#)

You can use the SabreTooth License Manager for the following tasks:

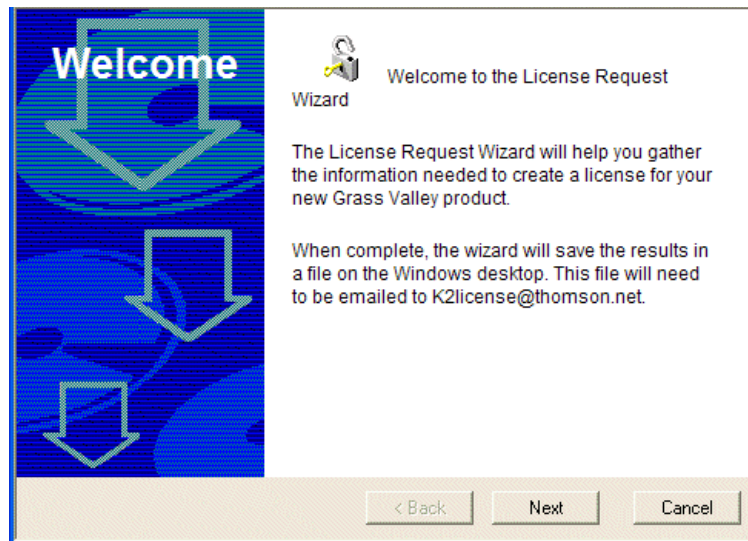
- [“Adding a license” on page 9](#)
- [“Deleting licenses” on page 10](#)
- [“Archiving licenses” on page 10](#)

Requesting a license

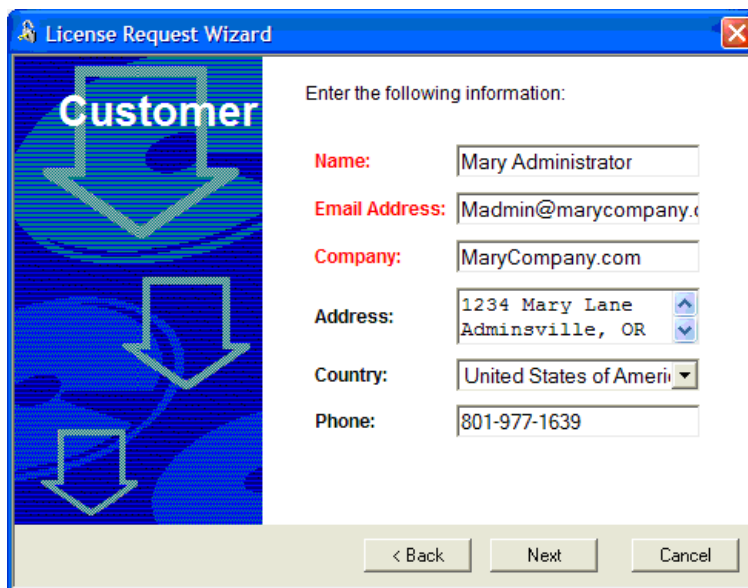
Software licenses are unique to the system for which they are purchased. They cannot be used on any other system. This requires that you provide a generated unique ID for the desired system to Grass Valley, which is then used to create your unique license.

To get a license number, follow these steps:

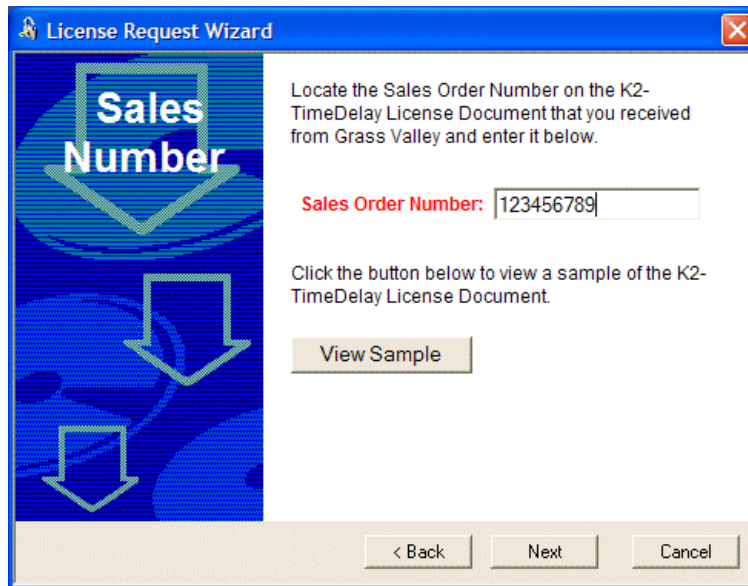
1. Select **Start | Programs | Grass Valley | Request K2 Licenses**. The License Request Wizard displays.



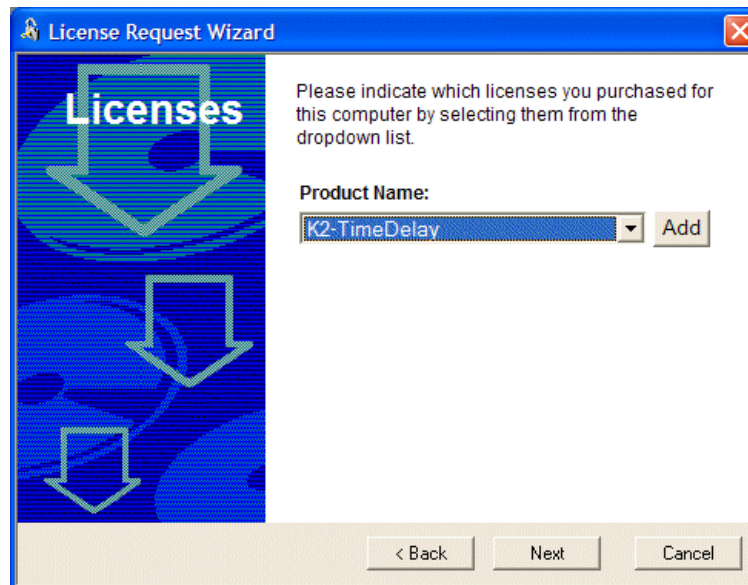
2. Read the on-screen instructions, then click **Next** to proceed to the customer information screen. The Customer dialog box displays.



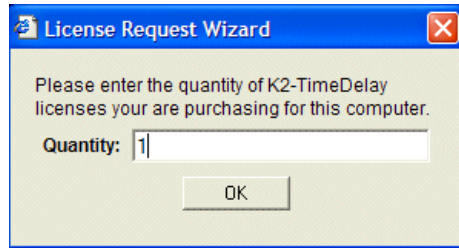
3. Enter the information requested in red font on this page. You must provide a valid email address to receive your license file.
4. Click **Next** to continue. The Sales Number dialog box displays.



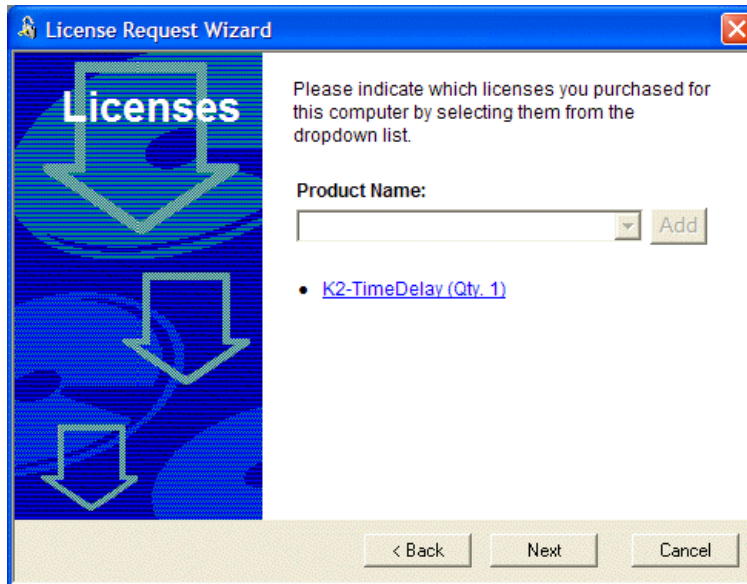
5. Enter the Sales Order Number in the field. The Sales Order Number can be found on the Software License sheet that accompanies the K2 TimeDelay software CD.
6. Click **Next** to continue. The Licenses dialog box displays.



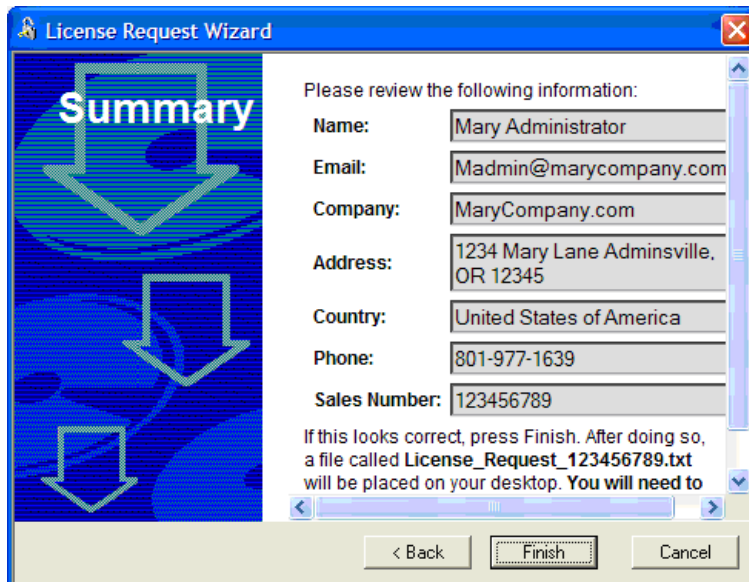
7. Select the product name with the drop-down arrow, and click Add. The License Request Wizard displays a pop-up box.



8. Enter the number of licenses. Depending on the configuration of your K2 system, K2 TimeDelay allows you to request up to two licenses per machine.
9. Click **Next** to continue. The Licenses dialog box displays the quantity of licenses that you have requested.



10. To change the requested number of licenses, click on the underlined product name link, and repeat steps 7 - 9. Otherwise, click **Next** to continue. The Summary dialog box displays.



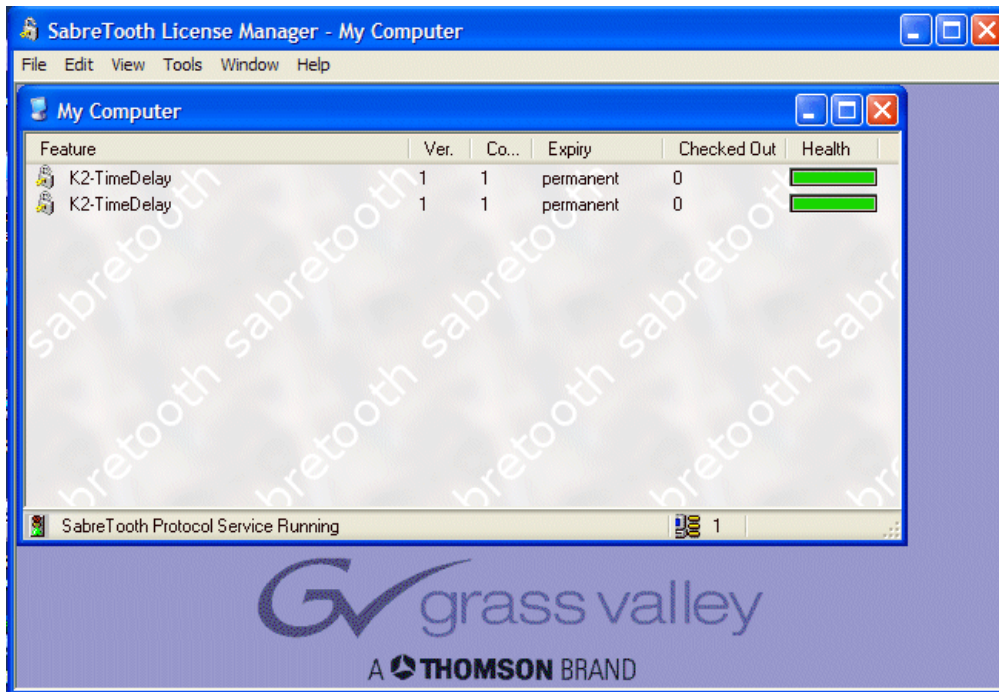
11. Review the License Request information and click **Finish**. A License Request text file, *License_Request_<SalesNumber>.txt*, is generated and saved to the Windows Desktop.
12. Attach this text file to an email and send it to K2License@grassvalley.com. You can also paste the text directly into an email message. You might want to keep a copy of the message for your records.
13. An email will be sent to the email address you specified; your SabreTooth software license will be provided as a text file. For more information, see [“Adding a license”](#).

Adding a license

Your software license, *Licenses_<SalesNumber>.txt*, is provided as a text file. Use the License Manager to add this file to your system and enable the desired feature.

To add a license:

1. Click on the License Manager icon on the Windows Desktop. The SabreTooth License Manager opens. When TimeDelay is first installed, a temporary license is automatically provided.
2. Choose **File | Import License** and navigate to the file location to open the text file, or drag and drop the text file onto the License Manager. In the following example, there are two permanent licenses, one for each record channel on this K2 system.



Deleting licenses

Deleting a license disables the feature that it enabled. You might want to delete a temporary license prior to its expiry if you have decided not to purchase the feature. You can delete a temporary license after the permanent license has been installed without disabling K2 TimeDelay.

To delete a license:

1. Select the license in the SabreTooth License Manager.
2. Use the Delete key on your keyboard or right click with your mouse and select Delete.

Archiving licenses

You can archive your licenses to a secure location. This allows you to quickly re-install a license should you inadvertently delete it.

To archive a license:

1. Select the license in the SabreTooth License Manager.
2. Choose **File | Export License** to open the Save As dialog box.

Assign a meaningful name to the file, and save it to the desired location.

Operation considerations

- The Auto Start time must be a minimum of 10 seconds ahead of the current time. (CR 72946). If you need to record in less than 10 seconds, use the Manual mode

instead of Auto Start.

- On a K2 system with internal storage, the Start At time must be 15 seconds or more after the Auto Start record time.
- On a K2 system with direct connect or shared storage, the Start At time must be 25 seconds or more after the Auto Start record time.
- Stopping the Record channel causes the Play channels to stop. To ensure that the delayed Play channels continue playing, do not stop the Record channel.
- To ensure frame accuracy, Grass Valley recommends using an external timecode source such as LTC.
- If the TimeDelay session is disrupted, for example due to operator error or power cycle, you will need to start a new TimeDelay session.
- If TimeDelay runs continuously for an extended time period, the K2 client or K2 Solo Media Server running TimeDelay must be restarted at least once per year.

Known problems

The following limitations are present in this 7.1 release. To obtain more information about these limitations, please mention the reference numbers that follow the description of each limitation.

- Description: If play is paused for longer than the buffer length, the delay offset can slip when media is deleted. (CR72723)
- Workaround: Do not pause play longer than the buffer length.

