



EDIUS

EDIT ANYTHING

Installation Guide

www.grassvalley.com

F0951204131
April 2012

Copyright

Copyright 2010-2012 Grass Valley K.K. All rights reserved. Portions of software © 2000 – 2012, Microsoft Corporation. All rights reserved. This document may not be copied in whole or in part, or otherwise reproduced except as specifically permitted under U.S. copyright law, without the prior written consent of Grass Valley, Inc., P.O. Box 59900, Nevada City, California 95959-7900. This product may be covered by one or more U.S. and foreign patents.

Disclaimer

Product options and specifications subject to change without notice. The information in this manual is furnished for informational use only, is subject to change without notice, and should not be construed as a commitment by Grass Valley, Inc. Grass Valley, Inc. assumes no responsibility or liability for any errors or inaccuracies that may appear in this publication.

**U.S.
Government
Restricted
Rights Legend**

Use, duplication, or disclosure by the United States Government is subject to restrictions as set forth in subparagraph (c)(1)(ii) of the Rights in Technical Data and Computer Software clause at DFARS 252.277-7013 or in subparagraph c(1) and (2) of the Commercial Computer Software Restricted Rights clause at FAR 52.227-19, as applicable. Manufacturer is Grass Valley, Inc., P.O. Box 59900, Nevada City, California 95959-7900 U.S.A.

Trademarks and Logos

Grass Valley, K2, Aurora, Summit, Dyno, Solo, Infinity, Turbo, Profile, Profile XP, NetCentral, NewsBrowse, NewsEdit, NewsQ, NewsShare, NewsQ Pro, and Media Manager are either registered trademarks or trademarks of Grass Valley, Inc. in the United States and/or other countries. Grass Valley, Inc. products are covered by U.S. and foreign patents, issued and pending. Additional information regarding Grass Valley, Inc. trademarks and other proprietary rights may be found at www.grassvalley.com.

Other trademarks and logos used in this document are either registered trademarks or trademarks of the manufacturers or vendors of the associated products, such as Microsoft® Windows® operating system, Windows Media® player, Internet Explorer® internet browser, and SQL Server™. QuickTime and the QuickTime logo are trademarks or registered trademarks of Apple, Inc., used under license therefrom. Intel, Pentium, Xeon and Core Duo are the trademarks or registered trademarks of Intel Corporation or its subsidiaries in the United States of America and other countries. Adobe, Adobe logo, Adobe Reader, Adobe Photoshop and After Effects are registered trademarks of Adobe Systems Incorporated. Dolby, Dolby and the Double D symbol are registered trademarks of Dolby Laboratories. They are manufactured based on their own license.



**Manual
Explanation**

- If there are any variations between the explanation in this manual and the actual application method, priority is given to the actual application method.
- The screens used as examples in this manual are those of the development stage, so they may vary from those in the final product.
- This manual is written for people who have a basic knowledge of how to use a computer. If there are no special instructions, perform the same operation as a normal computer operation.
- In this manual, Microsoft® Windows® 7 operating system is described as Windows 7 (collective term of Ultimate, Professional, Home Premium, and Home Basic).

**Health
Precautions**

- In rare cases, flashing lights or stimulation from the bright light of a computer display or TV monitor may trigger temporary epileptic seizures or loss of consciousness. It is believed that even individuals whom have never experienced such symptoms may be susceptible. If you or close relatives have experienced any of these symptoms, consult a doctor before using this product.
- If you edit 3D video more than an hour continuously, take a rest of 10 to 15 minutes per hour. If you feel tired or uncomfortable, stop using the product.

**Revision
Status**

Rev Date	Description
May 9, 2012	Release F0951204131

Contents

Before Installing EDIUS

Grass Valley Product Support	6
------------------------------------	---

Installation

Installing EDIUS	8
------------------------	---

Serial Registrations.....	10
---------------------------	----

Uninstallation

Uninstallation	12
----------------------	----

Appendix

Registering your serial offline	13
---------------------------------------	----

Before Installing EDIUS

Grass Valley Product Support

For technical assistance, to check on the status of a question, or to report a new issue, contact Grass Valley Product Support via e-mail, the Web, or by phone or fax.

Web Technical Support

To access support information on the Web, visit the product support Web page on the Grass Valley Web site. You can download software or find solutions to problems by searching our Frequently Asked Questions (FAQ) database.

World Wide Web:

<http://www.grassvalley.com/support/>

Global Technical Support e-mail address:

gvtechsupport@grassvalley.com

EMEA Technical Support e-mail address:

desktop.support.de@grassvalley.com

UK Technical Support e-mail address:

desktop.support.emea@grassvalley.com

Phone Support

Use the following information to contact product support by phone during business hours. After hours phone support is available for warranty and contract customers.

United States	(800) 547-8949 (Toll Free)
Latin America	(800) 547-8949 (Toll Free)
Europe, Africa & Middle East	+49 2602 1069 100
Canada	(800) 547-8949 (Toll Free)
China	+86 106615 9450
Hong Kong	+852 2531 3058
Singapore	+656379 1390
Australia	+61 1300 721 495

Authorized Support Representative

To locate the support representative for your country, visit the Product Support Web page on the Grass Valley Web site: www.grassvalley.com/support.



END-OF-LIFE PRODUCT RECYCLING NOTICE

Grass Valley's innovation and excellence in product design also extends to the programs we've established to manage the recycling of our products. Grass Valley has developed a comprehensive end-of-life product take back program for recycle or disposal of end-of-life products. Our program meets the requirements of the European Union's WEEE Directive, the United States Environmental Protection Agency, and U.S. state and local agencies.

Grass Valley's end-of-life product take back program assures proper disposal by use of Best Available Technology. This program accepts any Grass Valley branded equipment. Upon request, a Certificate of Recycling or a Certificate of Destruction, depending on the ultimate disposition of the product, can be sent to the requester.

Grass Valley will be responsible for all costs associated with recycling and disposal, including freight. However, you are responsible for the removal of the equipment from your facility and packing the equipment to make it ready for pickup.



For further information on the Grass Valley product take back system please contact Grass Valley at + 800 80 80 20 20 or +33 1 48 25 20 20 from most other countries. In the U.S. and Americas please call 800-547-8949 or 530-478-4148, and ask to be connected to the EH&S Department. Additional information concerning the program can be found at: www.grassvalley.com/about/environmental-policy

Installation

Installing EDIUS

Notes

- Before starting installation, close all the other applications that may be running in the task tray.
- Installation requires the account authorized for the administrator (such as PC administrator).
- Application to be installed may differ depending on model.
- Any older version of EDIUS on the PC will be uninstalled when installing EDIUS. Before installation, create the customized setting file as a backup, such as keyboard shortcuts and uninstall the preinstalled EDIUS.

Notes

- An error may occur during installation, depending on your antivirus software in your system. Please check with the antivirus software's manufacture for latest updates.

1 Double-click "Setup".

"EDIUS Self-Extractor" screen appears. Following screen (Installation Menu) will appear. Click.



POINT

- If a previous version of EDIUS is installed in your system, please uninstall according to the on-screen instructions. Please reboot your system.

Notes

- Your use of the Application is regulated by the End User License Agreement, which appears during the installation of this software. If you do not accept the terms, click [Cancel]. If you do not agree to the license agreement, you cannot use this product.
- Be sure of reading through terms and conditions by scrolling whole description.

POINT

- Installation of EDIUS starts. If you are installing EDIUS after mounting a Grass Valley hardware product, a message appears to confirm if you install the driver. Click [Install].

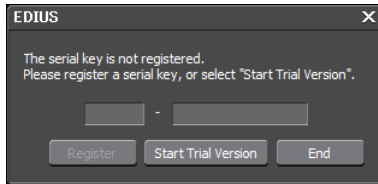
Serial Registrations

A serial number is required to use this Application. If a serial number is not entered, you can use EDIUS in TRIAL mode for 31 days.

Online Registration

1 Double-click “EDIUS” icon on desktop.

During the first launch, input serial number screen appears. Following screen (serial registration) will appear. Click.



For users who install the upgrade version

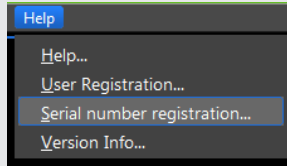
The screen appears, to enter the serial number of the previously used version of EDIUS. Enter the serial number of EDIUS you are using, and click [Next].

POINT

- Enter the serial number of 6 to 16 digits, which is pasted on the product package of EDIUS.
- Please note that the serial number cannot be reissued. Keep the number securely.

POINT

- Alternative:
Click the [help], and [Serial number registration...].

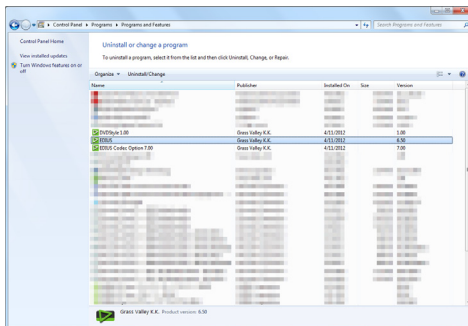


Uninstallation

Uninstallation

- Notes**
- Close all other applications including resident software before uninstallation.
 - Uninstallation requires the account authorized for the administrator (such as PC administrator).

- 1 Click "Start" menu and click "Control Panel".
- 2 Click "Uninstall a program".
- 3 Select "EDIUS" and click [Uninstall/Change]. Following screen (Uninstallation Menu) will appear. Click.



Appendix

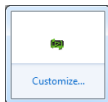
Registering your serial offline

If your system is not connected to the network, follow the below steps to register your serial number.

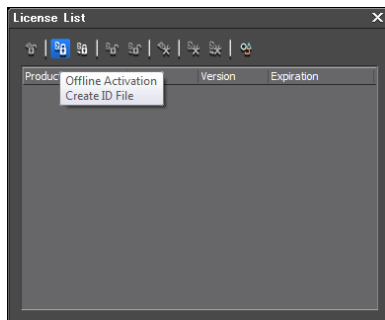
Offline Registration

This step describes how to get the offline serial number registration.

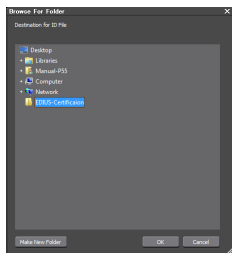
- 1 From the “Task menu“, click [Lisence Manager]-> Right-click [Lisence list] ,or double-click [Lisence Manager] icon.



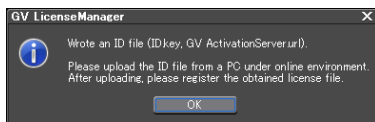
- 2 Click [Offline Activation Create ID File].



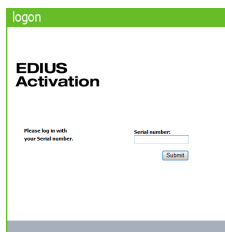
- 3 Select a location (folder) to create an Activation ID Key and link to the Activation Web site.



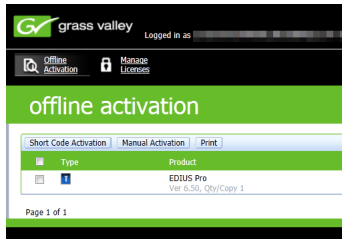
- 4 Click [OK].



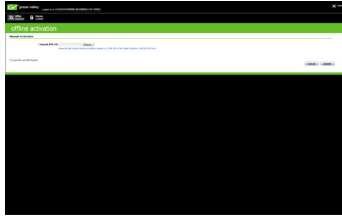
- 5 Copy the data created in step 3 to a memory device (such as USB memory stick), and move the contents to a PC connected to the internet. Click the GV Activation Server link to open the website, enter your serial number and click [submit].



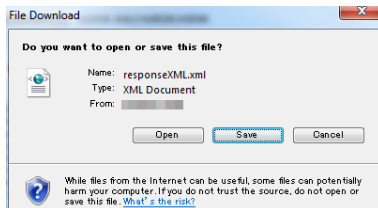
6 Click [Manual Activation].



7 Click [Browse...], and select the [ID.Key] file in the folder created in step 3, and click [Submit].

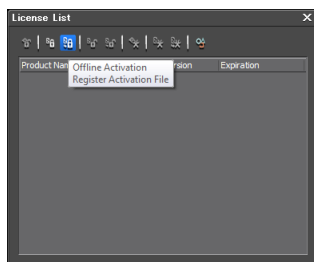


8 Click [Save To File], and click [Save].

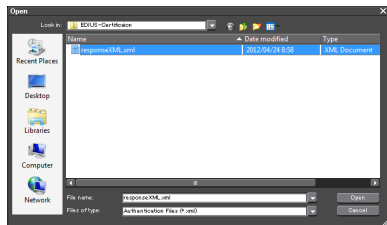


9 Copy the folder created in step 9 to a removable drive, and copy to the system where EDIUS is installed.

10 Click [Offline Activation Register Activation File].



11 Select the ".xml" file created in step 8, and click [Open].





Printed in Japan