



EDIUS

EDIT ANYTHING


Installation Guide

www.grassvalley.com

F3951305167
May 2013



Note

- It is prohibited to copy a part or all of this product without prior permission.
- The contents or specifications of this product may be changed without prior notice.
- We have prepared the contents of this product to the best of our ability; however if you have any questions about the contents, or if there are any errors or missing items, please contact Grass Valley.
- However we do not take any responsibility for malfunctions arising from use, irrespective of the points outlined in the preceding paragraph.
- Irrespective of whether it was due to a usage error, Grass Valley takes no responsibility for extraordinary, incidental or derivative claims, including those for lost earnings generated by the application of this product.
- It is prohibited to analyze, reverse engineer, decompile, or disassemble any of the items included with this product, including the software, hardware, and manuals.
- Microsoft and Windows are registered trademarks of Microsoft Corporation, USA.
- Intel, Pentium, Xeon, and Core Duo are trademarks or registered trademarks of Intel Corporation or its subsidiaries in the United States and other countries.
- QuickTime and QuickTime logo are trademarks used under licenses. QuickTime is a trademark registered in USA and other countries.
- Adobe, Adobe logo, Adobe Reader, Adobe Photoshop, and After Effects are registered trademarks of Adobe Systems Incorporated.
-  Dolby and the Double D symbol are trademarks of Dolby Laboratories. They are manufactured based on their own license.
- Other product names or related brand names are trademarks or registered trademarks of their respective companies.



Manual Explanation

- If there are any variations between the explanation in this manual and the actual application method, priority is given to the actual application method.
- The images used in this manual are prototypes and they may be different from the screens of the actual product.
- This manual is written for users who have a basic knowledge of how to use a computer. If there are no special instructions, perform the same operation as a normal computer operation.
- In this manual, Microsoft® Windows® 7 operating system is referred to as Windows 7 (collective term for Ultimate, Professional, Home Premium, and Home Basic).



DANGER

Health Precautions

In rare cases, flashing lights or stimulation from the bright light of a computer display or TV monitor may trigger temporary epileptic seizures or loss of consciousness. It is believed that even individuals whom have never experienced such symptoms may be susceptible. If you or close relatives have experienced any of these symptoms, consult a doctor before using this product.

If you edit 3D video more than an hour continuously, take a rest of 10 to 15 minutes per hour. If you feel tired or uncomfortable, stop using the product.

Copyright

Do not use captured image/sound data created by other ones without authorization of the right holder regardless of whether it is moving or still image, except for personal fun. Also, duplication of such data is sometimes limited even for personal hobby. Please notice that we are exempted from responsibility for the use of captured data.

Copyright	Copyright 2010-2013 Grass Valley K.K. All rights reserved. Portions of software © 2000 – 2013, Microsoft Corporation. All rights reserved. This document may not be copied in whole or in part, or otherwise reproduced except as specifically permitted under U.S. copyright law, without the prior written consent of Grass Valley, Inc., P.O. Box 59900, Nevada City, California 95959-7900. This product may be covered by one or more U.S. and foreign patents.
Disclaimer	Product options and specifications subject to change without notice. The information in this manual is furnished for informational use only, is subject to change without notice, and should not be construed as a commitment by Grass Valley, Inc. Grass Valley, Inc. assumes no responsibility or liability for any errors or inaccuracies that may appear in this publication.
U.S. Government Restricted Rights Legend	Use, duplication, or disclosure by the United States Government is subject to restrictions as set forth in subparagraph (c)(1)(ii) of the Rights in Technical Data and Computer Software clause at DFARS 252.277-7013 or in subparagraph c(1) and (2) of the Commercial Computer Software Restricted Rights clause at FAR 52.227-19, as applicable. Manufacturer is Grass Valley, Inc., P.O. Box 59900, Nevada City, California 95959-7900 U.S.A.

**Trademarks
and Logos**

Grass Valley, K2, Aurora, Summit, Dyno, Solo, Infinity, Turbo, Profile, Profile XP, NetCentral, NewsBrowse, NewsEdit, NewsQ, NewsShare, NewsQ Pro, and Media Manager are either registered trademarks or trademarks of Grass Valley, Inc. in the United States and/or other countries. Grass Valley, Inc. products are covered by U.S. and foreign patents, issued and pending. Additional information regarding Grass Valley, Inc. trademarks and other proprietary rights may be found at www.grassvalley.com.

EDIUS Installation Guide

May 16, 2013

Copyright © 2013 Grass Valley K.K. All rights reserved.

Contents

Before Installing EDIUS.....	1
Grass Valley Product Support.....	1
Installation	3
Before Installation.....	3
Installing EDIUS.....	3
Serial Registrations	4
User Registrations.....	6
User Registrations.....	6
Uninstallation.....	7
Uninstallation.....	7
Appendix.....	8
Serial Registrations (Offline).....	8

Before Installing EDIUS

Grass Valley Product Support

For technical assistance, to check on the status of a question, or to report a new issue, contact Grass Valley Product Support via e-mail, the Web, or by phone or fax.

Web Technical Support

To access support information on the Web, visit the product support Web page on the Grass Valley Web site. You can download software or find solutions to problems by searching our Frequently Asked Questions (FAQ) database.

World Wide Web:

<http://www.grassvalley.com/support/>

Global Technical Support e-mail address:

gvtechsupport@grassvalley.com

EMEA Technical Support e-mail address:

desktop.support.de@grassvalley.com

UK Technical Support e-mail address:

desktop.support.emea@grassvalley.com

Phone Support


Use the following information to contact product support by phone during business hours. After hours phone support is available for warranty and contract customers.

United States	(800) 547-8949 (Toll Free)
Latin America	(800) 547-8949 (Toll Free)
Europe, Africa & Middle East	+49 2602 1069 100
Canada	(800) 547-8949 (Toll Free)
China	+86 106615 9450

Hong Kong	+852 2531 3058
Singapore	+656379 1390
Australia	+61 1300 721 495

Authorized Support Representative

To locate the support representative for your country, visit the Product Support Web page on the Grass Valley Web site: www.grassvalley.com/support.




END-OF-LIFE PRODUCT RECYCLING NOTICE

Grass Valley's innovation and excellence in product design also extends to the programs we've established to manage the recycling of our products. Grass Valley has developed a comprehensive end-of-life product take back program for recycle or disposal of end-of-life products. Our program meets the requirements of the European Union's WEEE Directive, the United States Environmental Protection Agency, and U.S. state and local agencies.

Grass Valley's end-of-life product take back program assures proper disposal by use of Best Available Technology. This program accepts any Grass Valley branded equipment. Upon request, a Certificate of Recycling or a Certificate of Destruction, depending on the ultimate disposition of the product, can be sent to the requester.

Grass Valley will be responsible for all costs associated with recycling and disposal, including freight. However, you are responsible for the removal of the equipment from your facility and packing the equipment to make it ready for pickup.



For further information on the Grass Valley product take back system please contact Grass Valley at + 800 80 80 20 20 or +33 1 48 25 20 20 from most other countries. In the U.S. and Americas please call 800-547-8949 or 530-478-4148, and ask to be connected to the EH&S Department. Additional information concerning the program can be found at: www.grassvalley.com/about/environmental-policy

Installation

Before Installation

This section explains precautions and preparation before installing EDIUS.



Note

- Before starting installation, close all other applications including resident software.
- Installation requires the account authorized for the administrator (such as PC administrator).
- Application to be installed may differ depending on model.
- Any older version of EDIUS on the PC will be uninstalled when installing EDIUS. Before installation, create the customized setting file as a backup, such as keyboard shortcuts and uninstall the preinstalled EDIUS.

For users who purchased the download version

- Save three download files in the same folder in advance.
 - EDIUS_7.xx_xxxx_DL_Setup.exe
 - EDIUS70_DVDStyle_7.xx.exe
 - EDIUS70_Manual_xx_7.xx.exe
- Execute EDIUS_7.xx_xxxx_DL_Setup.exe before executing other two .exe files.
- QuickTime is required to operate EDIUS. First, download and install QuickTime from the Apple Web site, and then install EDIUS.

Installing EDIUS

1. Double-click EDIUS_7.xx_xxxx_Setup.exe or EDIUS_7.xx_xxxx_DL_Setup.exe.

[EDIUS Self-Extractor] screen appears. Install according to the on-screen instructions.

2. If any older version of EDIUS is installed on your PC, uninstall according to the on-screen instructions.


Check [Perform the deactivation later.] on the uninstallation screen and continue to uninstall, and reboot your PC.



- For users who use the download version, execute EDIUS_7.xx_xxxx_DL_Setup.exe before executing other two .exe files.



Note

- Your use of the Application is regulated by the End User License Agreement, which appears during the installation of this software. If you do not agree to the license agreement of this software, click [Cancel] to cancel the installation and contact our customer support in writing.
 - Be sure to read through terms and conditions by scrolling whole description.
 - When an error may occur during installation depending on your antivirus software in your system, please check with the antivirus software's manufacturer for latest updates.
-  • If you are installing EDIUS after mounting a Grass Valley hardware product, a message appears to confirm if you install the driver. Click [Install].

Serial Registrations

A serial number is required to use EDIUS. If a serial number is not registered, you can use EDIUS in TRIAL mode.



Note

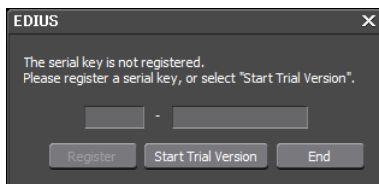
- You can use EDIUS in TRIAL mode for 31 days.

Online Registration


This step describes how to get the online serial number registration.

1. Double-click the [EDIUS] icon on the desktop.

During the first launch of EDIUS, input serial number screen appears. Register according to the on-screen instructions.



**Note**

- The screen to enter the serial number of the previously used version of EDIUS may appear during the registration when installing the upgrade version. If necessary, enter the serial number of your EDIUS and click [Next].
-
-  Enter the serial number of 6 to 16 digits, which is pasted on the product package.
 - Please note that the serial number cannot be reissued. Keep the number securely.
 - Alternative: Click [Help] → [Serial number registration] on EDIUS.
 - Alternative: Click [Start] to display the start menu, and click [All Programs] → [Grass Valley] → [Serial number registration].

User Registrations

User Registrations

You can register a user during/after installation. Your system is required to connect to the network for user registrations.

User registration from EDIUS

1 Start up EDIUS.

For details of start-up of EDIUS and Creating a New Project, refer to Reference Manual.

2 Click [Help] on the menu bar, and click [User Registration].

Web browser starts up and a user registration page appears. Register a user according to the on-screen instructions.

Uninstallation

Uninstallation

Note

- Close all other applications including resident software before uninstallation.
 - Uninstallation requires the account authorized for the administrator (such as PC administrator).
 - This section explains how to uninstall on Windows 7.
- 1 Click [Start] to display the start menu, and click [Control Panel].**
 - 2 Click [Uninstall a program].**
 - 3 Select [EDIUS] and click [Uninstall/Change] uninstall according to the on-screen instructions.**

Appendix

Serial Registrations (Offline)

Offline Registration

Note

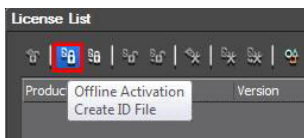
- This section explains how to register on Windows 7.

1 Connect a removable USB storage media to the PC with EDIUS installed.

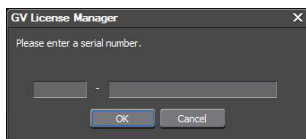
2 Click [Start] to display the start menu, and click [All Programs] → [Grass Valley] → [GV LicenseManager].

The [GV LicenseManager] starts up and the [License List] dialog box appears.

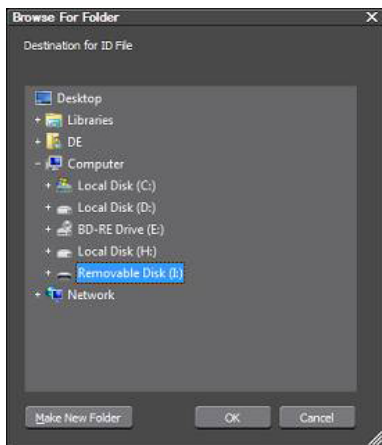
3 Click [Offline Activation Create ID File].



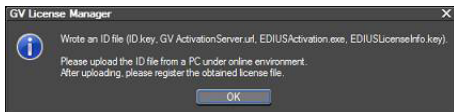
4 Enter the serial number of EDIUS, and click [OK].



- 5 Specify the removable USB storage media for the save destination of the activation ID file in the [Browse For Folder] dialog box, and click [OK].

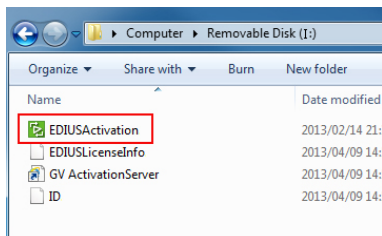


- 6 Click [OK].

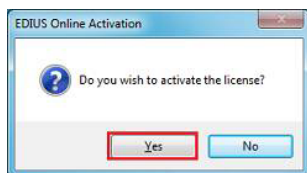


- 7 Remove the USB storage media from the PC and connect it to the online PC.

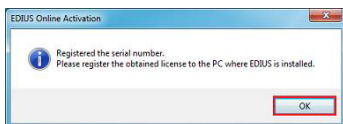
- 8 Open the USB storage media in Explorer, and double-click EDIUSActivation.exe.**



- 9 Click [Yes].**

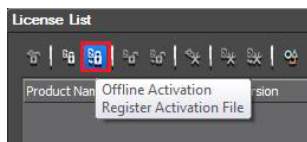


- 10 Click [OK].**

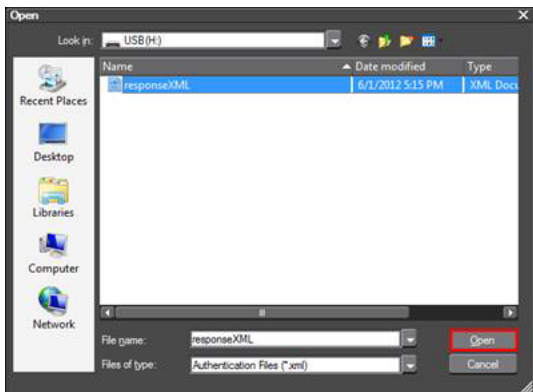


- 11 Remove the USB storage media from the PC, connect it to the PC with EDIUS installed, and start up GV LicenseManager.**

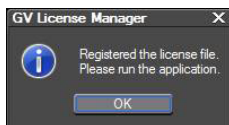
- 12 Click [Offline Activation Register Activation File].**



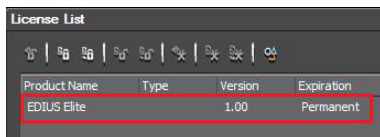
- 13 Open the USB storage media, specify response.xml, and click [Open].**



- 14 Click [OK].**



- 15 Check that the registered EDIUS is displayed in the [License List] dialog box and exit GV LicenseManager.**



- More information about serial registrations (offline) is released on the Grass Valley Web site.