



grass valley
A **BELDEN** BRAND

T2 Elite 2/Pro 2/Express 2 T2 Elite/Pro/Express

INTELLIGENT DIGITAL DISK RECORDER

Maintenance Manual

Version 2.3.0

Copyright

Copyright 2012 – 2013 Grass Valley K.K. All rights reserved. Portions of software © 2000 – 2013, Microsoft Corporation. All rights reserved. This document may not be copied in whole or in part, or otherwise reproduced except as specifically permitted under U.S. copyright law, without the prior written consent of Grass Valley, Inc., P.O. Box 59900, Nevada City, California 95959-7900. This product may be covered by one or more U.S. and foreign patents. Grass Valley is a trademark of GVBB Holdings S.a.r.l.

Disclaimer

Product options and specifications subject to change without notice. The information in this manual is furnished for informational use only, is subject to change without notice, and should not be construed as a commitment by Grass Valley, Inc. Grass Valley, Inc. assumes no responsibility or liability for any errors or inaccuracies that may appear in this publication.

U.S. Government Restricted Rights Legend

Use, duplication, or disclosure by the United States Government is subject to restrictions as set forth in subparagraph (c)(1)(ii) of the Rights in Technical Data and Computer Software clause at DFARS 252.277-7013 or in subparagraph c(1) and (2) of the Commercial Computer Software Restricted Rights clause at FAR 52.227-19, as applicable. Manufacturer is Grass Valley, Inc., P.O. Box 59900, Nevada City, California 95959-7900 U.S.A.

Trademarks and Logos

Grass Valley is a trademark of GVBB Holdings S.a.r.l. Grass Valley USA, LLC products are covered by U.S. and foreign patents, issued and pending. Additional information regarding Grass Valley USA, LLC trademarks and other proprietary rights may be found at www.grassvalley.com.

Other trademarks and logos used in this document are either registered trademarks or trademarks of the manufacturers or vendors of the associated products, such as Microsoft® Windows® operating system, Windows Media® player, Internet Explorer® internet browser, and SQL Server™. QuickTime and the QuickTime logo are trademarks or registered trademarks of Apple, Inc., used under license therefrom. Intel, Core i7 are the trademarks or registered trademarks of Intel Corporation or its subsidiaries in the United States of America and other countries.



Grass Valley Web Site

This public Web site contains all the latest manuals and documentation, and additional support information. Use the following URL.
<http://www.grassvalley.com>.

Manual Explanation

- If there are any variations between the explanation in this manual and the actual application method, priority is given to the actual application method.
- This manual is a common manual for T2 Elite 2, T2 Pro 2, T2 Express 2, T2 Elite, T2 Pro and T2 Express. Screenshots and illustrations in this manual may vary from those of the actual product.
- The screenshots used as examples in this manual are those of the development stage, so they may vary from those in the final product.
- This manual is written for users who have a basic knowledge of how to use a computer.
- If there are no special instructions, perform the same operation as a normal computer operation.
- The contents of this product may modify without prior notice.

T2 Elite 2/Pro 2/Express 2/Elite/Pro/Express Maintenance Manual
Version 2.3.0

Copyright © 2012 - 2016 Grass Valley. All rights reserved.

Contents

	Safety Summaries	5
	Finding Information	9
	How this manual is organized	9
	Grass Valley Product Support	10
	Web Technical Support	10
	Phone Support	10
	Authorized Support Representative	10
Chapter 1	Product Description	
	Overview Description	14
	Status indicators	15
	Power LED	15
	LAN port indicator codes	15
Chapter 2	Maintenance Procedures	
	Cleaning the touch screen LCD	18
	Starting and exiting the maintenance mode	18
	Starting the maintenance mode	19
	Exiting the maintenance mode	20
	Using the Maintenance Tools	22
	Launching the Maintenance Tools	22
	Closing the Maintenance Tools	22
	Media drive maintenance	23
	Data maintenance	26
	System related maintenance	32
	Using the Windows desktop	36
	Restoring to the factory default condition	37
	Recovery procedure for T2 Elite/Pro/Express	37
	Recovery procedure for T2 Elite 2/Pro 2/Express 2	44
	T2 Recovery Utility for T2 Elite 2/Pro 2/Express 2	46
Chapter 3	Troubleshooting Problems	
	Step 1: Check configurations	52
	Step 2: Check connections and external equipment	52
	Shutdown/restart problems	52
	Checking external equipment	53
	PC monitor problems	53
	Keyboard problems	53
	Mouse problems	54
	Motherboard/BIOS startup	54
	Windows startup	56
	T2 system startup	56
	I/O board unit problems	56
	Front panel problems	57
	Touch screen LCD and control buttons problems	57
	2.5 inch removable SSD bay problems	57
	Media card reader problems	58
	Video problems	58
	Audio problems	58
	Timecode problems	59
	Operational problems	59
	System problems	60
	Storage problems	60
	Media File System problems	60
	Media disk problems	60
	Checking the storage system	62
	Index	63

Safety Summaries

General Safety Summary

Review the following safety precautions to avoid injury and prevent damage to this product or any products connected to it.

While using this product, you may need to access other parts of the system. Read the *General Safety Summary* in other system manuals for warnings and cautions related to operating the system.

Injury Precautions

Use Proper Power Cord

To avoid fire hazard, use only the power cord specified for this product.

Ground the Product

This product is grounded through the grounding conductor of the power cord. To avoid electric shock, the grounding conductor must be connected to earth ground. Before making connections to the input or output terminals of the product, ensure that the product is properly grounded.

Do Not Operate Without Covers

To avoid electric shock or fire hazard, do not operate this product with covers or panels removed.

Do Not Operate in Wet/Damp Conditions

To avoid electric shock, do not operate this product in wet or damp conditions.

Do Not Operate in an Explosive Atmosphere

To avoid injury or fire hazard, do not operate this product in an explosive atmosphere.

Avoid Exposed Circuitry

To avoid injury, remove jewelry such as rings, watches, and other metallic objects. Do not touch exposed connections and components when power is present.

Product Damage Precautions

Use Proper Power Source

Do not operate this product from a power source that applies more than the voltage specified.

Provide Proper Ventilation

To prevent product overheating, provide proper ventilation.

Do Not Operate With Suspected Failures

If you suspect there is damage to this product, have it inspected by qualified service personnel.


Battery Replacement


To avoid damage, a battery must be replaced once every five years. Please contact Grass Valley Product Support to replace the battery.

Safety Terms and Symbols

Terms in This Manual

These terms may appear in this manual:

 **WARNING:** *Warning statements identify conditions or practices that can result in personal injury or loss of life.*

 **CAUTION:** *Caution statements identify conditions or practices that may result in damage to equipment or other property, or which may cause equipment crucial to your business environment to become temporarily non-operational.*

Terms on the Product

These terms may appear on the product:

DANGER indicates a personal injury hazard immediately accessible as one reads the marking.


WARNING indicates a personal injury hazard not immediately accessible as you read the marking.

CAUTION indicates a hazard to property including the product.

Symbols on the Product

The following symbols may appear on the product:

 DANGER high voltage

 Protective ground (earth) terminal

 ATTENTION – refer to manual

Service Safety Summary



WARNING: *The service instructions in this manual are intended for use by qualified service personnel only. To avoid personal injury, do not perform any servicing unless you are qualified to do so. Refer to all safety summaries before performing service.*

Do Not Service Alone

Do not perform internal service or adjustment of this product unless another person capable of rendering first aid and resuscitation is present.

Disconnect Power

To avoid electric shock, disconnect the main power by means of the power cord or, if provided, the power switch.

Use Care When Servicing With Power On

Dangerous voltages or currents may exist in this product. Disconnect power and remove battery (if applicable) before removing protective panels, soldering, or replacing components.

To avoid electric shock, do not touch exposed connections.

Certifications and Compliances

Canadian Certified Power Cords

Products that are relocated to other countries should use nationally certified power cords and plugs to ensure safe operation of the product.

FCC Emission Control

This equipment has been tested and found to comply with the limits for a Class A digital device, pursuant to Part 15 of the FCC Rules. These limits are designed to provide reasonable protection against harmful interference when the equipment is operated in a commercial environment. This equipment generates, uses, and can radiate radio frequency energy and, if not installed and used in accordance with the instruction manual, may cause harmful interference to radio communications. Operation of this equipment in a residential area is likely to cause harmful interference in which case the user will be required to correct the interference at his own expense. Changes or modifications not expressly approved by Grass Valley can affect emission compliance and could void the user's authority to operate this equipment.

Canadian EMC Notice of Compliance

This digital apparatus does not exceed the Class A limits for radio noise emissions from digital apparatus set out in the Radio Interference Regulations of the Canadian Department of Communications.

This product must not be used in residential areas.

**EMC Directive
Class A Warning**

This product must not be used in residential areas.

FCC Emission Limits

This device complies with Part 15 of the FCC Rules. Operation is subject to the following two conditions: (1) This device may not cause harmful interference, and (2) this device must accept any interference received, including interference that may cause undesirable operation.

Safety Certification

This product has been evaluated and meets the following Safety Certification Standards:

Standard	Designed/tested for compliance with:
IEC 60950-1	Information technology equipment - Safety - (2nd:2005)
EN 60950-1	Information technology equipment - Safety - (2006)
J60950 (H22)	Electrical Appliance and Material Safety Law

Finding Information

This Service Manual provides procedures for assessing and solving technical problems and performing routine maintenance on your T2.

The T2 has two types of operation: Front Panel Mode and Workstation Mode. Front panel mode allows you to operate the T2 using the touch screen or a mouse while looking at the touch screen LCD. Workstation Mode allows you to operate the T2 using a mouse or keyboard while looking at PC monitor connected to the T2.

This service manual mainly documents procedures of the Front Panel Mode using a mouse unless otherwise documented, procedures for operations with the Workstation Mode are also the same as for the Front Panel Mode.

How this manual is organized

This Service Manual consists of the following:

[Chapter 1, *Product Description*:](#)

Describes the key features and status indicators of the T2.

[Chapter 2, *Maintenance Procedures*:](#)

Contains procedures for periodic maintenance.

[Chapter 3, *Troubleshooting Problems*:](#)

Contains problem descriptions with steps for diagnosing and correcting the cause of the problem. Use this information if you are having trouble with your T2.

Grass Valley Product Support

For technical assistance, to check on the status of a question, or to report a new issue, contact Grass Valley Product Support via e-mail, the Web, or by phone or fax.

Web Technical Support

To access support information on the Web, visit the product support Web page on the Grass Valley Web site. You can download software or find solutions to problems by searching our Frequently Asked Questions (FAQ) database.

World Wide Web: <http://www.grassvalley.com/support/>

Global Technical Support e-mail address: gvtechsupport@grassvalley.com

EMEA Technical Support e-mail address: desktop.support.de@grassvalley.com

UK Technical Support e-mail address: desktop.support.emea@grassvalley.com

Phone Support

Use the following information to contact product support by phone during business hours. Afterhours phone support is available for warranty and contract customers.

United States/Americas	+1 801 222 5204
Europe, Africa & Middle East	+44 (0) 20 8867 6305
Asia (except China/Korea)	+86 21 5869 8668

Authorized Support Representative

To locate the support representative for your country, visit the Product Support Web page on the Grass Valley Web site: www.grassvalley.com/support.

END-OF-LIFE PRODUCT RECYCLING NOTICE

Grass Valley's innovation and excellence in product design also extends to the programs we've established to manage the recycling of our products. Grass Valley has developed a comprehensive end-of-life product take back program for recycle or disposal of end-of-life products. Our program meets the requirements of the European Union's WEEE Directive, the United States Environmental Protection Agency, and U.S. state and local agencies.

Grass Valley's end-of-life product take back program assures proper disposal by use of Best Available Technology. This program accepts any Grass Valley branded equipment. Upon request, a Certificate of Recycling or a Certificate of Destruction, depending on the ultimate disposition of the product, can be sent to the requester.

Grass Valley will be responsible for all costs associated with recycling and disposal, including freight. However, you are responsible for the removal of the equipment from your facility and packing the equipment to make it ready for pickup.



For further information on the Grass Valley product take back system please contact Grass Valley at + 800 80 80 20 20 or +33 1 48 25 20 20 from most other countries. In the U.S. and Americas please call 800-547-8949 or 530-478-4148, and ask to be connected to the EH&S Department. Additional information concerning the program can be found at: www.grassvalley.com/about/environmental-policy

Product Description

This chapter consists of the following:

- "Overview Description" on page 14
- "Status indicators" on page 15
 - "Power LED" on page 15
 - "LAN port indicator codes" on page 15

Overview Description

The T2 is a multi-channel video disk recorder that allows simultaneous record and playback of media stored on internal data drives. The T2 features a single record channel (R1) and 2 play channels (P1/P2). Hours of storage depends on the video compression settings selected.

The T2 includes a built in disk recorder application that tasks – record, edit, play, and create/play Playlists. The front panel includes the touch screen LCD and transport controls to allow easy operation with minimal external connections.

Refer to the T2 User Manual for other high-level descriptions of features, controls, and applications.


Status indicators

The following sections describe the visual indicators that communicate the current operating status and system health of the T2.

Power LED

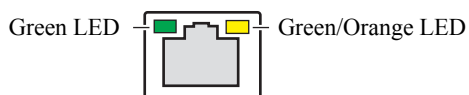
The Power LED indicates status as follows:

LED behavior	Status Condition
Off	The power is set to Off and the T2 is not operational.
Green steady on	The power is set to On and the T2 is operational.

 **WARNING:** The power switch does not turn off power to the system. To turn power off, the system must be disconnected from the power source.

LAN port indicator codes

The RJ-45 LAN port includes integrated status LEDs. The LEDs oriented as follows:



The meanings of the LED states are described in the following table:

LED	Color	LED state	Status Condition
Left	Green	Off	LAN link is not established.
		On	LAN link is established.
		Flashing	The computer is communicating with another computer on the LAN.
Right	Green	Off	10 Mbit/sec data rate is selected.
		On	100 Mbit/sec data rate is selected.
	Orange	On	1000 Mbit/sec data rate is selected.

If the LAN is faulty, you must replace the motherboard. Contact Grass Valley Support.

Maintenance Procedures

This chapter consists of the following:

- "Cleaning the touch screen LCD" on page 18
- "Starting and exiting the maintenance mode" on page 18
 - "Starting the maintenance mode" on page 19
 - "Exiting the maintenance mode" on page 20
- "Using the Maintenance Tools" on page 22
 - "Launching the Maintenance Tools" on page 22
 - "Closing the Maintenance Tools" on page 22
 - "Media drive maintenance" on page 23
 - "Data maintenance" on page 26
 - "System related maintenance" on page 32
- "Using the Windows desktop" on page 36
- "Restoring to the factory default condition" on page 37
 - "Recovery procedure for T2 Elite/Pro/Express" on page 37
 - "Recovery procedure for T2 Elite 2/Pro 2/Express 2" on page 44
 - "T2 Recovery Utility for T2 Elite 2/Pro 2/Express 2" on page 46

Cleaning the touch screen LCD

Build up of foreign objects such as soil and dust or dirt such as fingerprints on the touch screen LCD may cause malfunction. Perform cleaning of the touch screen LCD periodically, noting the following points:

- The surface of the touch screen LCD must be wiped with a clean cloth dampened with a mild detergent. Do not apply a detergent directly onto the touch screen LCD.
- Do not use any detergent containing abrasives. Abrasives may scratch the surface of the display and decrease its visibility.
- Avoid getting water on the surface of the touch screen LCD. Moisture entered into the system will cause a failure.

Starting and exiting the maintenance mode

The T2 has the following startup modes: normal and maintenance modes. Start up your system in the appropriate mode depending on the purpose of use.

- Normal mode
The CommandCenter is launched automatically allowing you to perform operations such as recording, playback, or editing.
- Maintenance mode
The Maintenance Tools is launched automatically allowing you to perform maintenance operations of the T2. In the maintenance mode, you can also perform operations such as using the Windows OS (such as configuring the Date/Time) or restoring your T2 to the factory default condition.



CAUTION: *The T2 is not a general purpose Windows workstation. The T2 is designed so that a user can log on to the system automatically. Do not modify any system settings unless approved by Grass Valley. A partial or total system failure may result.*

- Do not use the User Accounts on the T2.
- Do not install any third party software not provided by Grass Valley on the T2.
- Do not install any Windows updates on the T2.

Starting the maintenance mode


Restart the T2 in the maintenance mode from CommandCenter to run the maintenance mode. This section mainly describes the procedures using the touch screen LCD.



CAUTION: *You must finish all of the playback and recording operations to stop the media access prior to performing operations.*

1. Switch to **1ch View**, touch **Menu**, and then touch **Tools → Maintenance**.
 - When operating in the workstation mode, click **System** from the menu bar and then click **Maintenance...**
2. Touch the entry field on the password entry screen.
3. Enter "admin", and touch **OK**.
4. Touch **OK**.
5. Touch **Yes** when the confirmation message is displayed.
 - The CommandCenter is closed and the system restarts in the maintenance mode.
 - Connect a mouse or keyboard, if necessary.
 - After the restart, the Maintenance Tools is launched automatically.

Exiting the maintenance mode

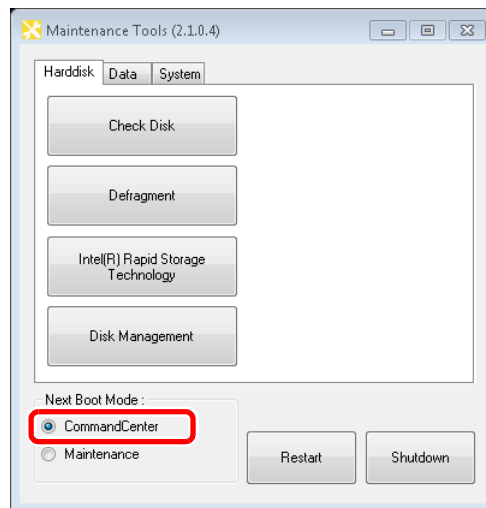
 **CAUTION:** You must finish a diagnosis using the Maintenance Tools prior to exiting the maintenance mode.

Restarting from the maintenance mode to the normal mode

The operation to switch from the maintenance mode to the normal mode is performed from the Maintenance Tools main screen.

NOTE: You need to launch the Maintenance Tools beforehand. For more information, refer to "[Launching the Maintenance Tools](#)" on page 22.

1. In the Maintenance Tools main screen, select **CommandCenter** under "Next Boot Mode".



2. Click **Restart**.

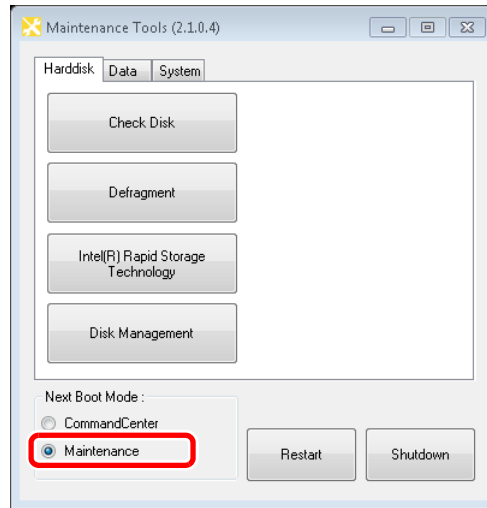
- After the restart, the CommandCenter is launched automatically.

Starting up the system without exiting the maintenance mode

This section describes the procedure to restart your system in the maintenance mode from the Maintenance Tools main screen.

NOTE: If the Maintenance Tools is not running in the maintenance mode, performing the normal restart operation from the Windows desktop will restart your system without exiting the maintenance mode.

1. In the Maintenance Tools main screen, select **Maintenance** under "Next Boot Mode".



2. Click **Restart**.

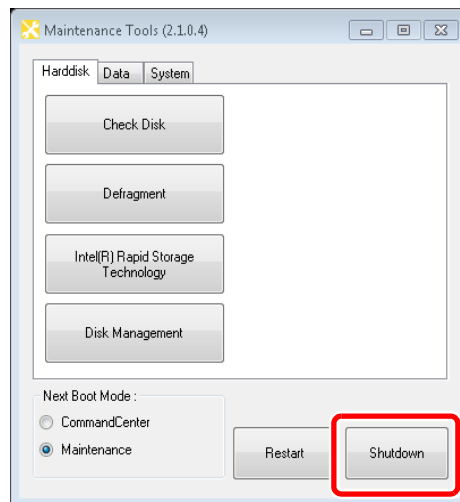
- After the restart, the Maintenance Tools is launched automatically.

Exiting the maintenance mode to shut down

You can exit the maintenance mode from the Maintenance Tools main screen to shut down the T2.

NOTE: *If the Maintenance Tools is not running in the maintenance mode, performing the normal shutdown operation from the Windows desktop will shut down your system. The T2 will restart in the maintenance mode.*

1. In the Maintenance Tools main screen, click **Shutdown**.
- You can select the next boot mode. Select **CommandCenter** to startup the T2 in the normal mode. Select **Maintenance** to startup the T2 in the maintenance mode.



Using the Maintenance Tools

The Maintenance Tools is software for performing maintenance procedures such as running a failure diagnosis on the T2 or backing up data. You can perform the following procedures using the Maintenance Tools. Refer to the specific topics for more information.

- Media drive maintenance
 - ["Media disk error checks" on page 23](#)
 - ["Defragmentation of media disk" on page 24](#)
- Data maintenance
 - ["Checking the data consistency" on page 26](#)
 - ["Initializing the data" on page 28](#)
 - ["Backing up the data" on page 29](#)
 - ["Restoring the data" on page 31](#)
- System related maintenance
 - ["Acquiring the system information" on page 32](#)
 - ["Exporting log files" on page 34](#)
 - ["Date and Time" on page 35](#)

Launching the Maintenance Tools

The Maintenance Tools is launched automatically when you start the maintenance mode. This section describes the procedure to launch the Maintenance Tools again when the Maintenance Tools is closed in the maintenance mode (from the Windows desktop).

For more information on how to start the maintenance mode, refer to ["Starting the maintenance mode" on page 19](#).

NOTE: *A mouse must be connected to your T2 beforehand.*

1. Double-click the Maintenance Tools icon on the Windows desktop.

NOTE: *You can also launch the Maintenance Tools by double-clicking C:/Eiger/Eiger.Mainte.ToolMain.exe.*

- The Maintenance Tools is launched.

Closing the Maintenance Tools

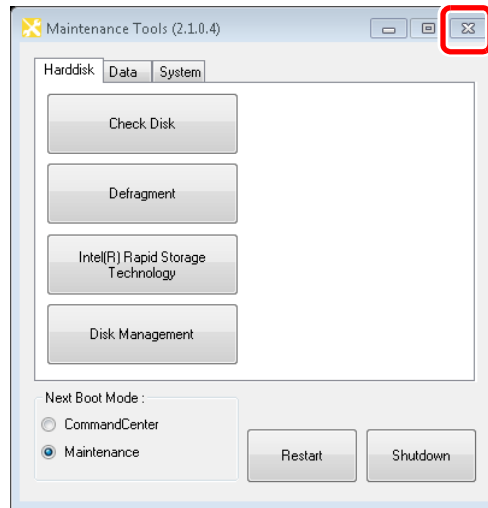
This section describes the procedure to close the Maintenance Tools and to display the Windows desktop.

For more information on how to exit the maintenance mode, refer to ["Exiting the maintenance mode" on page 20](#).



CAUTION: *You must finish a diagnosis using the Maintenance Tools prior to closing the Maintenance Tools.*

1. In the Maintenance Tools main screen, click **X**.
 - The Maintenance Tools is closed and the Windows desktop appears.

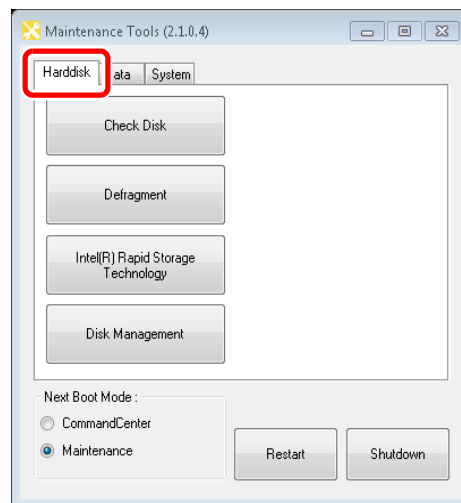


Media drive maintenance

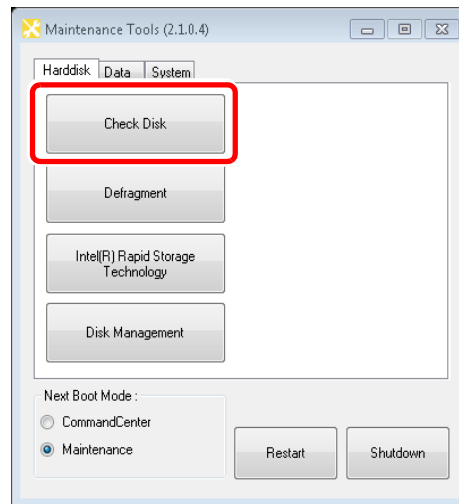
Media disk error checks

You can scan the media disk to check it for any file system errors and bad sectors, targeting the data drive (V: drive). If any error is found, the system attempts to fix the media disk.

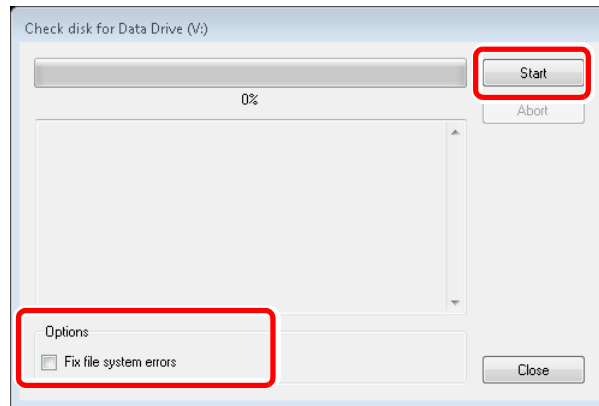
1. In the Maintenance Tools main screen, click the **Harddisk** tab.



2. Click **Check Disk**.



3. Check the items under "Options" as necessary, and then click **Start**.



- If **Fix file system errors** is checked, the system fixes errors automatically without scanning for bad sectors.
- To abort a check in the middle of performing it, click **Abort**.

4. When you see the completion message, click **Close**.

- "Check disk for Data Drive" screen is closed.

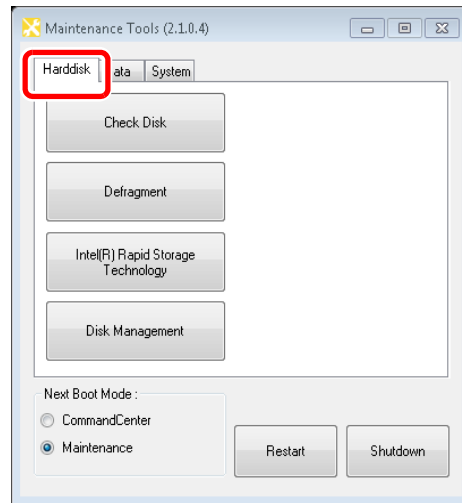
Defragmentation of media disk

You can defragment the media disk, targeting the data drive (V drive).

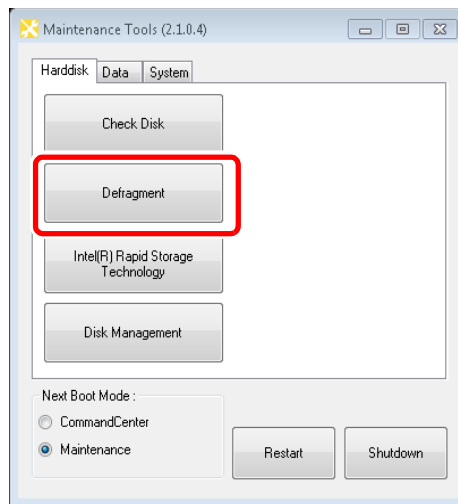


CAUTION: Do not defragment the media disk of the T2 Elite model. Defragmentation could shorten the life of an SSD.

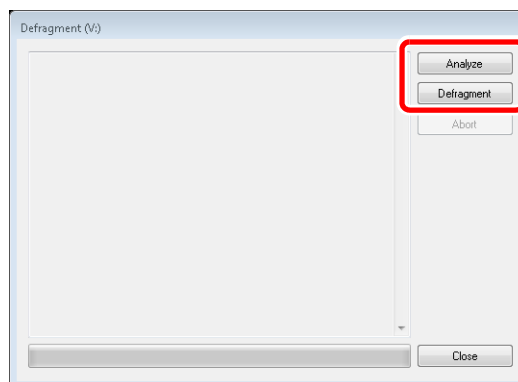
1. In the Maintenance Tools main screen, click the **Harddisk** tab.



2. Click **Defragment**.



3. Click either **Analyze** or **Defragment**.



- Clicking **Analyze** performs only a defragmentation analysis. The analysis result is displayed on the screen.
 - Clicking **Defragment** performs defragmentation. The progress of defragmentation is displayed on the screen.
 - To abort a process in the middle of performing it, click **Abort**.
4. When you see the completion message, click **Close**.
 - "Defragment" screen is closed.

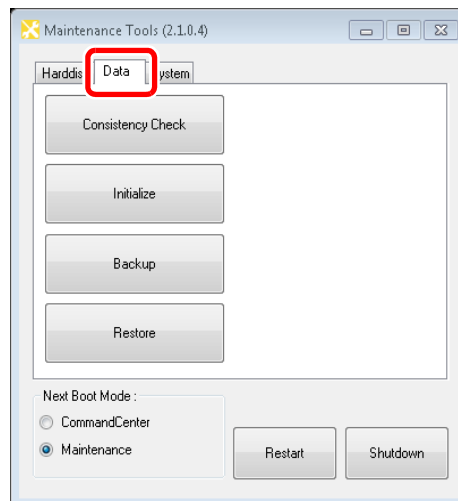
Data maintenance

Checking the data consistency

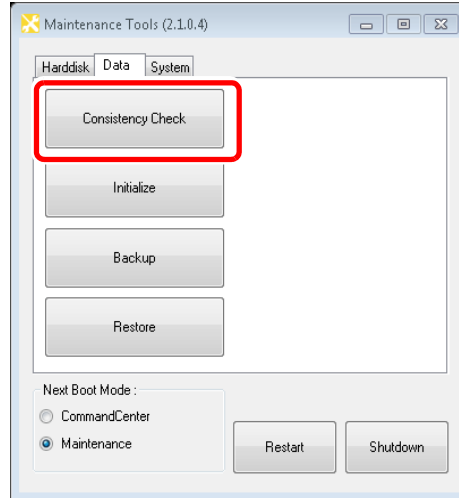
You can check the consistency between the database information and the actual media files. This allows you to list information or media files that exist in only either of them and to delete them.

NOTE: Data in the Recycle Bin is not subject to this data consistency check.

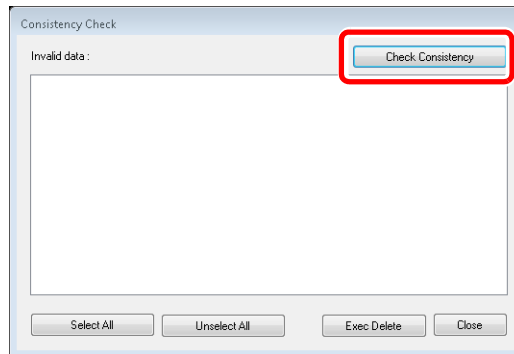
1. In the Maintenance Tools main screen, click the **Data** tab.



2. Click **Consistency Check**.

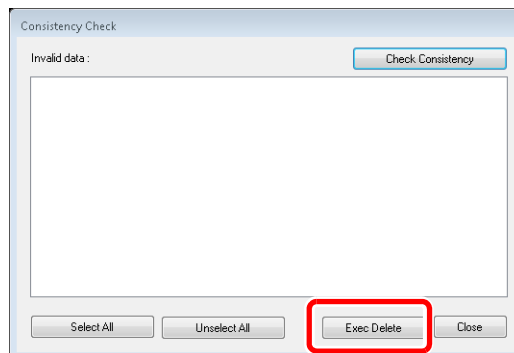


3. Click **Check Consistency**.



- A data consistency check begins and any inconsistent information is listed on the screen.

4. Check the inconsistent information you want to delete, and then click **Exec Delete**.




- You can select all of the listed information by clicking **Select All**.
- You can deselect all of the listed information by clicking **Unselect All**.

5. Click **Close**.

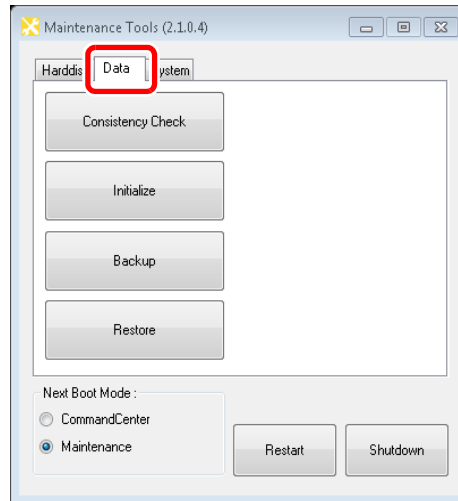
- "Consistency Check" screen is closed.

Initializing the data

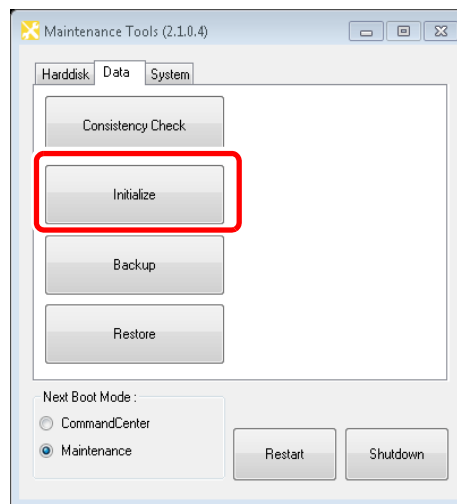
You can initialize the database, the data drive (V: drive), and the Config settings.

 **CAUTION:** *Initializing your data will delete all of the current data. You should back up your data beforehand as necessary.*

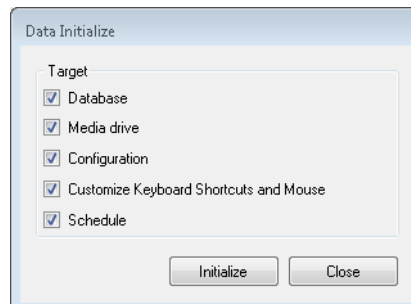
1. In the Maintenance Tools main screen, click the **Data** tab.



2. Click **Initialize**.



3. Check the items you want to initialize under "Target".

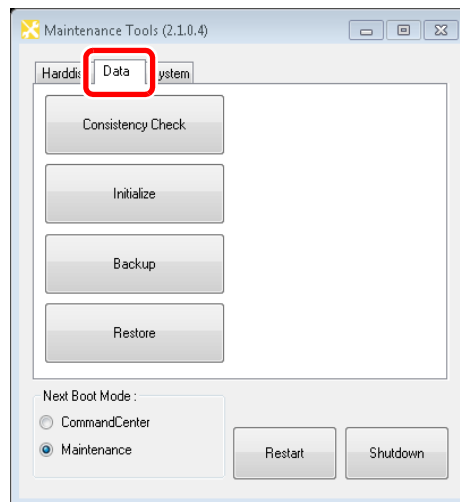


- Check **Database** to delete the contents of the database.
 - Check **Media drive** to format the data drive and initialize the folder structure.
 - Check **Configuration** to initialize the settings of Config.
 - Check **Customize Keyboard Shortcuts and Mouse** to initialize the settings of the keyboard shortcuts and mouse customization.
 - Check **Schedule** to initialize the settings of Schedule Recording.
Schedule Recording function automatically starts capturing operation at a specified time, and ends it at a specified time in the R1-live mode. For more information, refer to the T2 User Manual.
 - Multiple items can be selected.
4. Click **Initialize**.
 5. Click **Yes** when the confirmation message is displayed.
 - The initialization is performed.
 6. When you see the completion message, click **OK**.
 7. Click **Close**.
 - "Data Initialize" screen is closed.

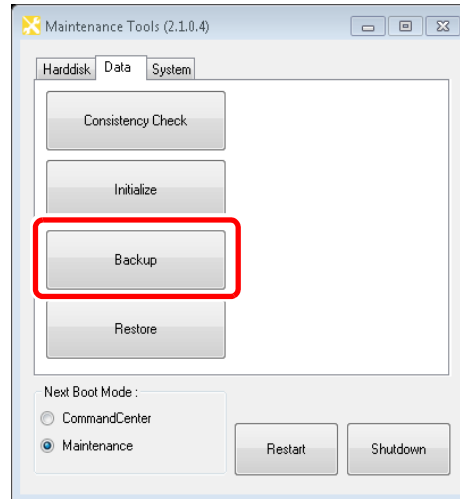
Backing up the data

You can back up the database, the media files in the data drive (V: drive), and the Config settings.

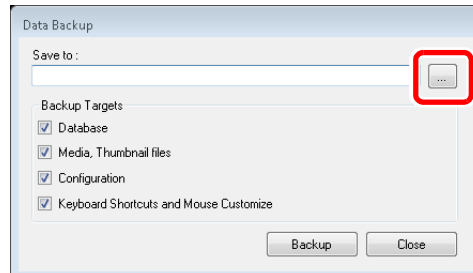
1. In the Maintenance Tools main screen, click the **Data** tab.



2. Click **Backup**.



3. Click ... to specify the destination to save your backup data.



4. Check the target item(s) you want to back up under "Backup Targets".

- Checking **Database** will back up the database.
- Checking **Media, Thumbnail files** will back up the media files including the thumbnails.
- Checking **Configuration** will back up the Config settings.
- Check **Keyboard Shortcuts and Mouse Customize** to back up the settings of the keyboard shortcuts and mouse customization.
- Multiple items can be selected.

5. Click **Backup**.

6. Click **Yes** when the confirmation message is displayed.

- The backup begins and the progress is displayed.

7. When you see the completion message, click **OK**.

- A folder, that stores an XML file containing the backup information and the backup data, is created in the specified destination. The folder name will be the saved date (yyyymmdd).

8. Click **Close**.

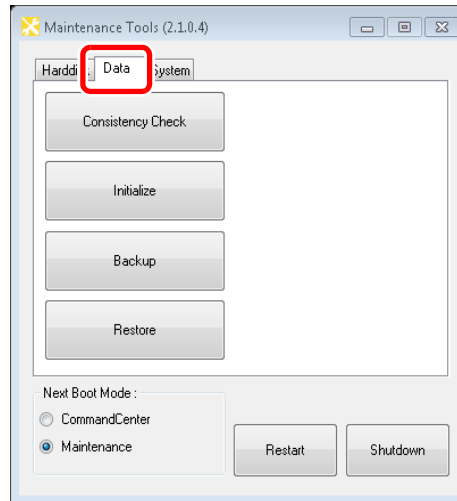
- "Data Backup" screen is closed.

Restoring the data

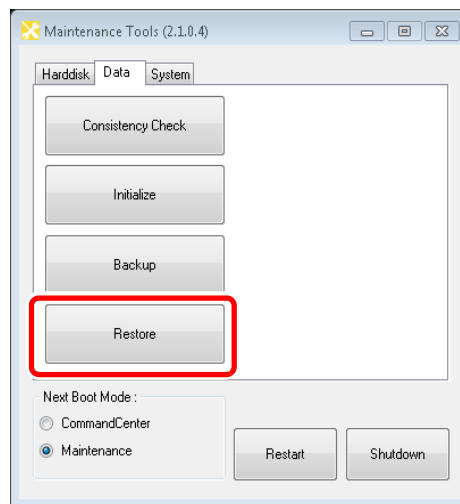
You can restore the data of your backed up database, media files, and Config settings.

CAUTION: Restoring your data will delete all of the current data overwriting it with the source data for the restore.

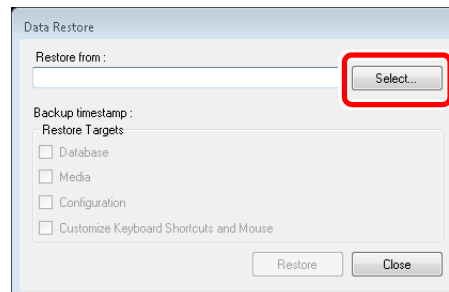
1. In the Maintenance Tools main screen, click the **Data** tab



2. Click **Restore**.



3. Click **Select...** to specify the XML file created upon the backup.



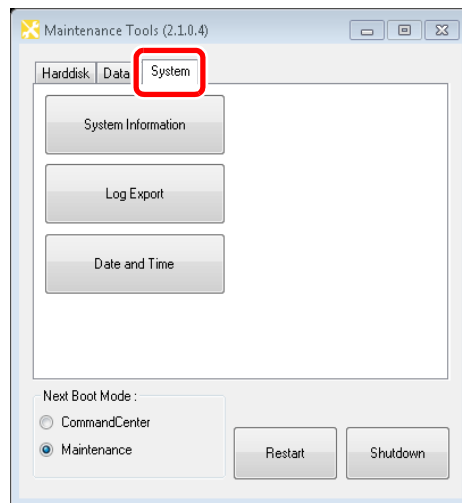
- "Backup timestamp" shows the backup date.
 - Among the items under "Restore Targets", any item(s) that exist in the same folder where the XML file is located will be checked.
4. Make sure that the data you want to restore are checked under "Restore Targets".
 - Uncheck any item that does not need to be restored.
 5. Click **Restore**.
 6. Click **Yes** when the confirmation message is displayed.
 - The restore begins.
 7. When you see the completion message, click **OK**.
 8. Click **Close**.
 - "Data Restore" screen is closed.

System related maintenance

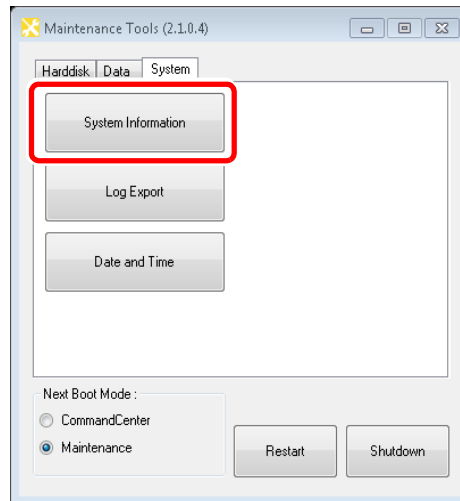
Acquiring the system information

You can acquire the system information of the Windows OS (such as the hardware information, components, and software environment) and save it in text format.

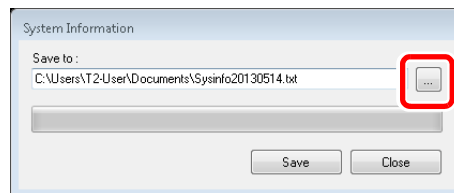
1. In the Maintenance Tools main screen, click the **System** tab.



2. Click **System Information**.



3. Click ... to specify the destination to save the system information and a file name.



4. Click **Save**.

- The progress bar shows the status of the system information acquirement.

5. When you see the completion message, click **OK**.

- A text format file containing the system information is created in the specified destination.

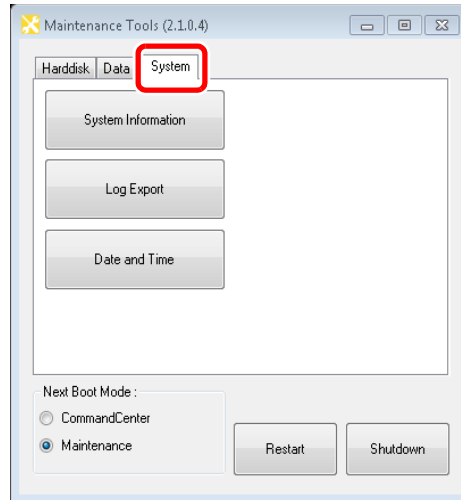
6. Click **Close**.

- "System Information" screen is closed.

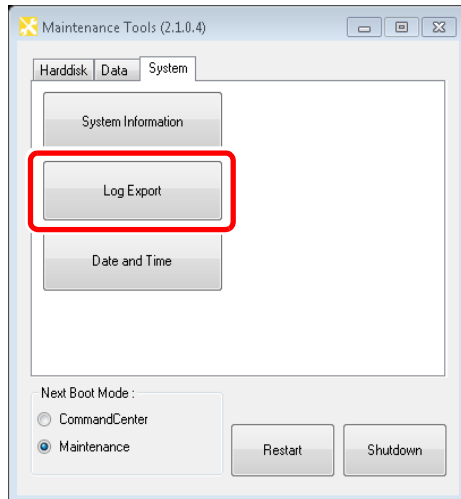
Exporting log files

You can export an operation log, Windows OS internal event log, database log, and crash dumps message log.

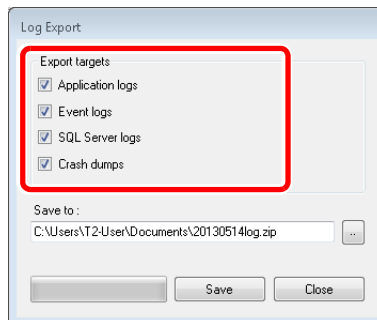
1. In the Maintenance Tools main screen, click the **System** tab.



2. Click **Log Export**.



3. Check the log(s) you want to export under "Export targets".



- Checking **Application logs** will export an operation log.

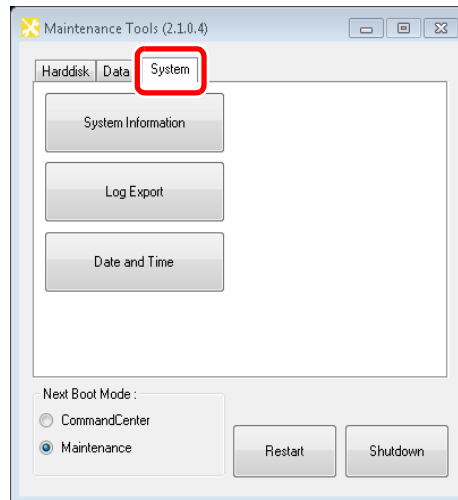
- Checking **Event logs** will export a Windows OS internal event log.
 - Checking **SQL Server logs** will export a database log.
 - Checking **Crash dumps** will export a crash dumps message log.
 - Multiple items can be selected.
4. Click ... to specify the destination to save the log and a file name.
 5. Click **Save**.
 - The progress bar shows the exporting status.
 6. When you see the completion message, click **OK**.
 - A ZIP file containing the log files is created in the specified destination.
 7. Click **Close**.
 - "Log Export" screen is closed.

NOTE: You can check the operation log while the T2 is running in the workstation mode. Click **Option** from the menu bar, and then click **Log** → **Show Log...** Once the "Log" screen appears, select the desired log file to view the operation log.

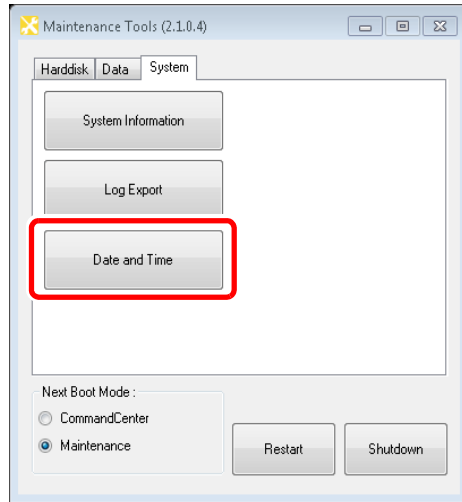
Date and Time

You can set the date and time of T2 built-in clock.

1. In the Maintenance Tools main screen, click the **System** tab.



2. Click **Date and Time**.



- On the "Date and Time" screen of the Windows OS that appears, change the date and time, and TimeZone.

3. Click **OK**.

- "Date and Time" screen is closed.

Using the Windows desktop

In the maintenance mode, you can use the standard Windows OS functions, using the Windows desktop.

The Windows desktop will become available when the Maintenance Tools is closed after starting up the system in the maintenance mode. For more information, refer to ["Starting the maintenance mode" on page 19](#) and ["Closing the Maintenance Tools" on page 22](#).


Restoring to the factory default condition


This section describes the procedure to restore (or recover) the T2 to the factory default condition using the recovery UFD (USB Flash Drive).

The recovery UFD is built in T2.

NOTE: A mouse and keyboard must be connected to your T2 beforehand.

NOTE: A recovery does not initialize the contents of the data drive (V: drive). If you want to initialize the data drive, refer to ["Initializing the data" on page 28](#).

 **CAUTION:** Do not connect any external storage device via USB, 2.5 inch removable SSD bay, or the media card reader when restoring to the factory default condition.

 **CAUTION:** A recovery will initialize all of the data below. You should back up your data to an external storage device beforehand as necessary.

- Database
- Config settings
- Logs (the operation log, Windows OS internal event log, database log, and crash dumps)

The recovery procedure differs depending on the model. For more information, see the reference.

- ["Recovery procedure for T2 Elite/Pro/Express" on page 37](#)
- ["Recovery procedure for T2 Elite 2/Pro 2/Express 2" on page 44](#)

Recovery procedure for T2 Elite/Pro/Express

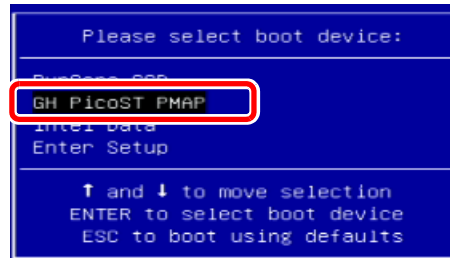
1. Turn the T2 on.
 - Turn on the power switch of the front panel.

NOTE: Make sure that no removal media drive is inserted in the 2.5 inch removable SSD bay.

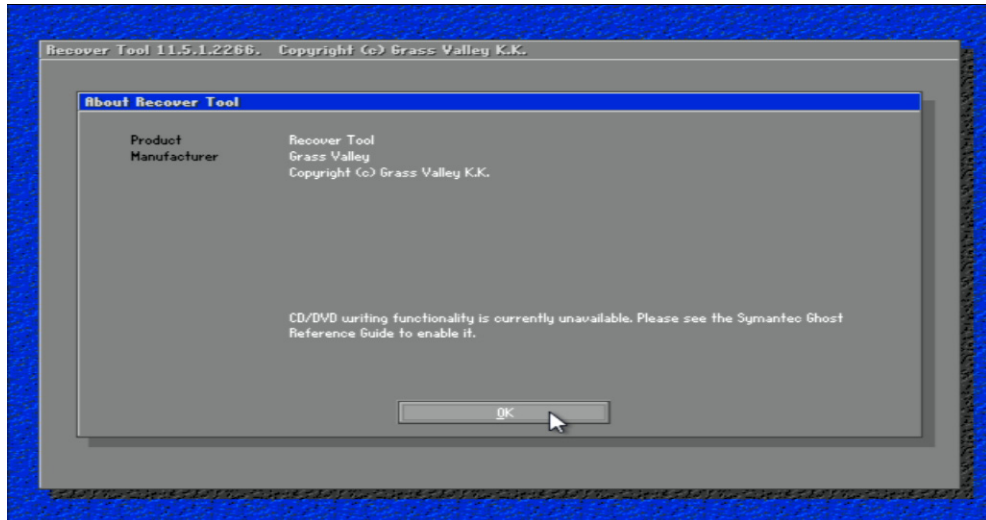
NOTE: Make sure that any device other than the keyboard and mouse is not connected to the USB port.

2. Press the [F7] key on the keyboard a few times when POST screen is displayed.
 - If you are restarting your system from the maintenance mode, refer to ["Exiting the maintenance mode" on page 20](#).
 - If you are restarting your system from the normal mode, refer to ["Starting the maintenance mode" on page 19](#).
 - The Boot Menu (Please select boot device:) appears.

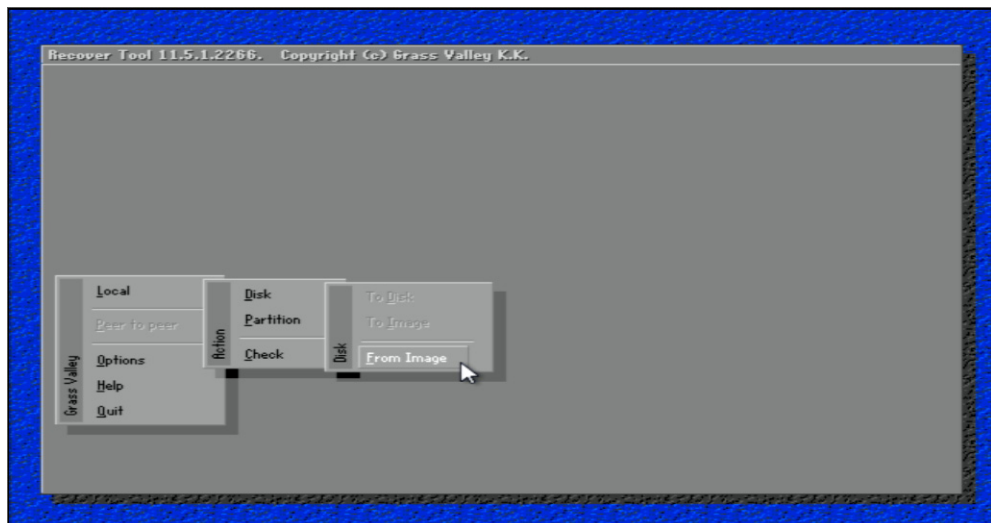
3. Select the recovery UFD using the [↑] or [↓] key, and then press the [Enter] key.



4. When "About Recover Tool" screen is displayed, click **OK**.

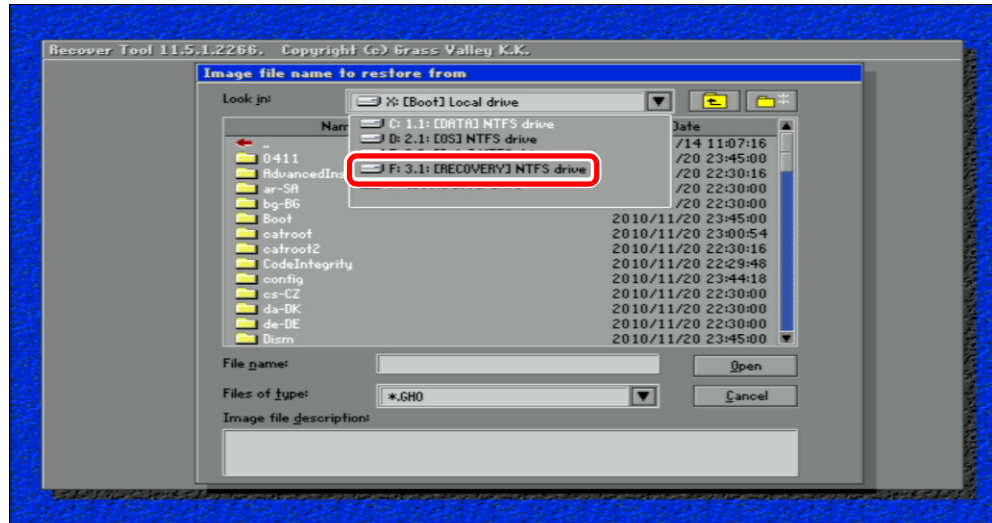


5. Click **Local**, and then click **Disk → From Image**.

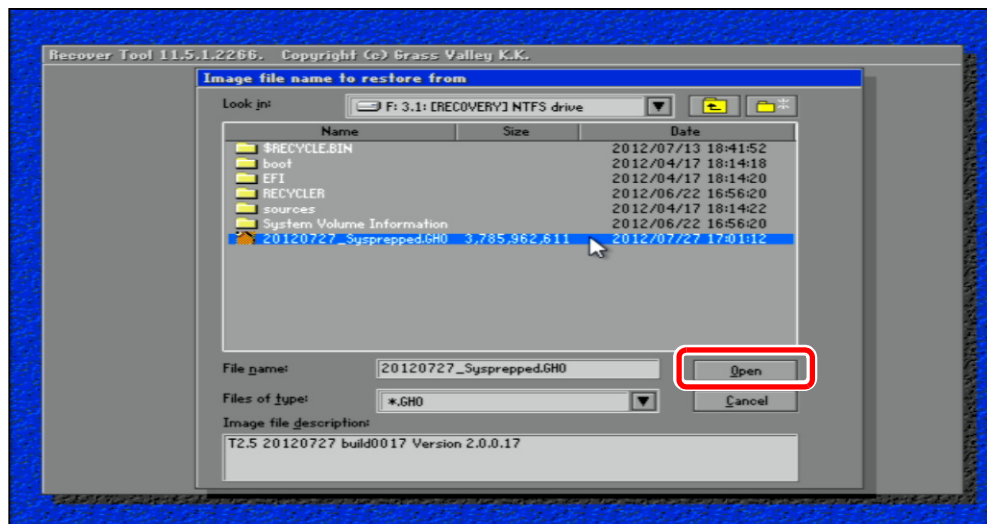


- "Image file name to restore from" screen appears.

6. Choose the drive "F: 3.1[: RECOVERY] NTFS drive" that contains the recovery image.

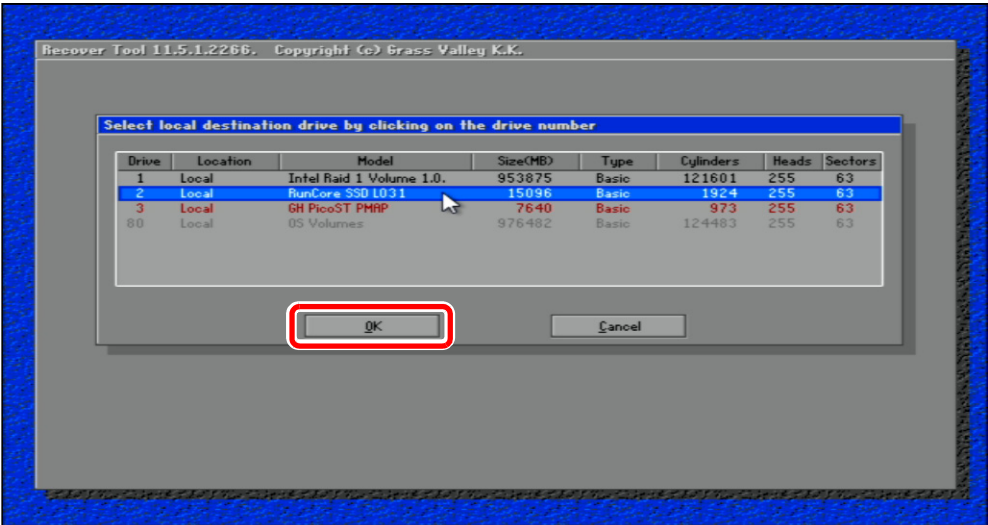


7. Select a GHO format file located directly under the F: drive, and then click **Open**.




- "Select local destination drive by clicking on the drive number" screen appears.

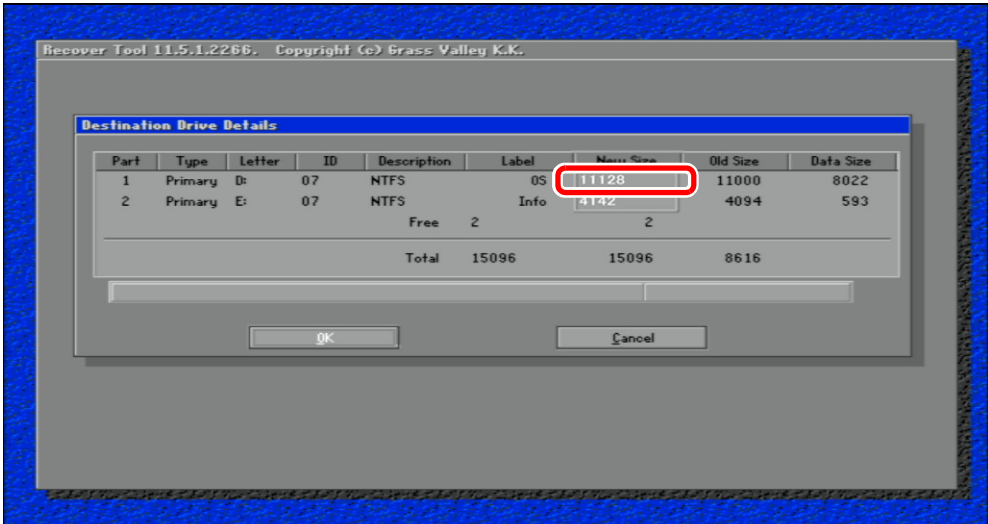
8. Select the SSD (for the system), and then click **OK**.



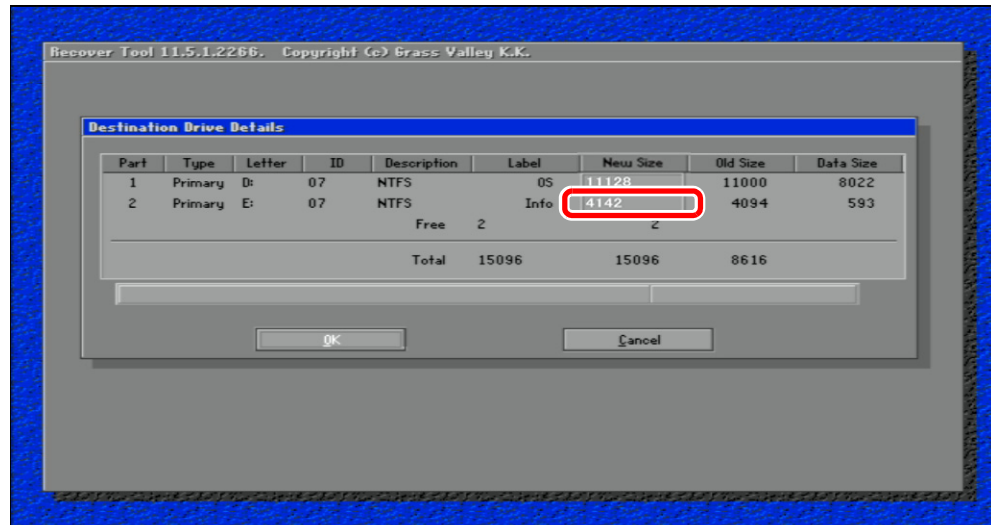
- "Destination Drive Details" screen appears.

 **CAUTION:** Be sure to select SSD (for the system) as the recovery destination as in the screen above. If a wrong recovery destination is selected, the system may not be able to be restored.

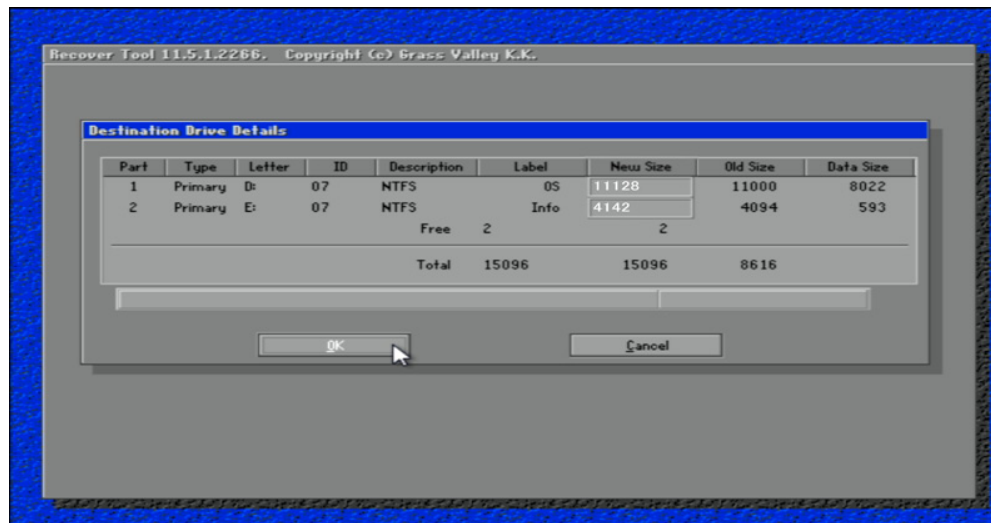
9. Confirm that the value in the "New Size" for the D: drive is larger than that of the "Old Size" for the D: drive.



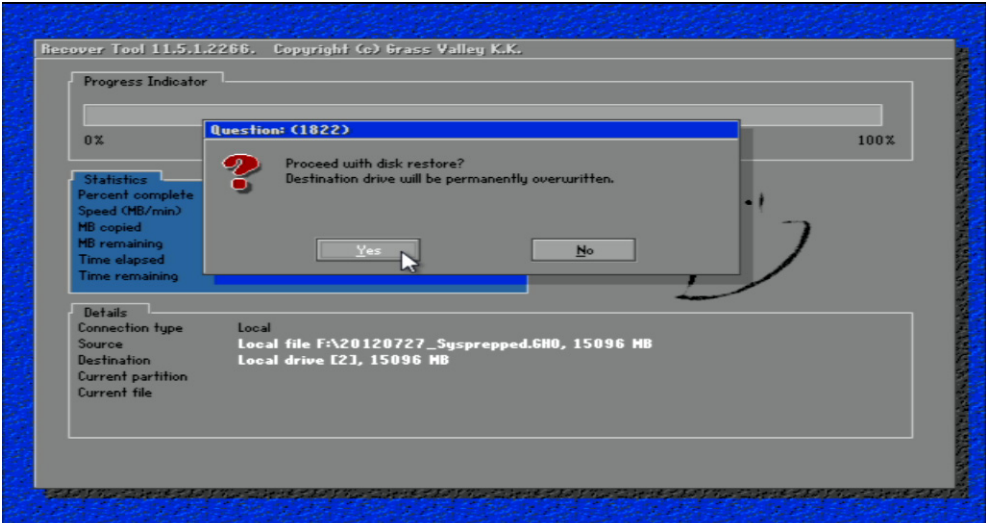
10. Confirm that the value in the "New Size" for the E: drive is larger than that of the "Old Size" for the E: drive.



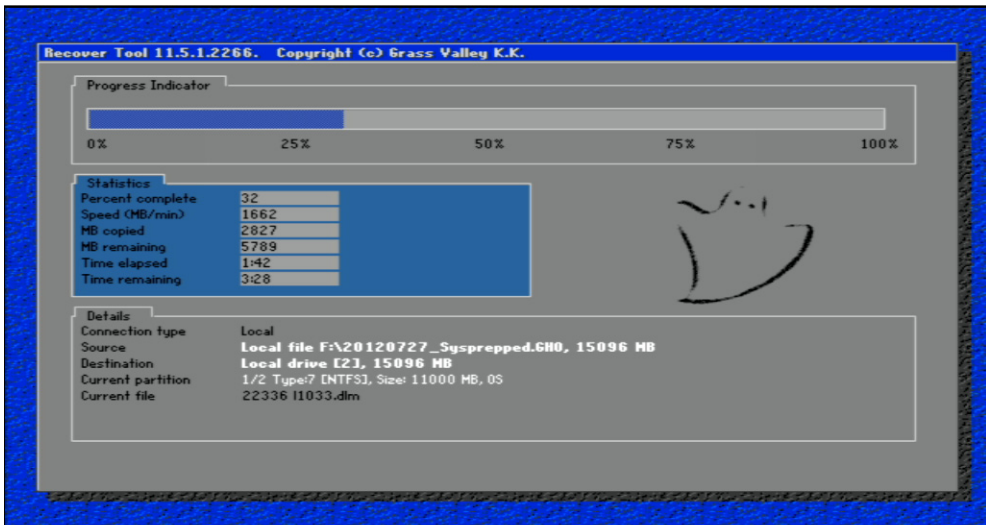
11. Click **OK**.

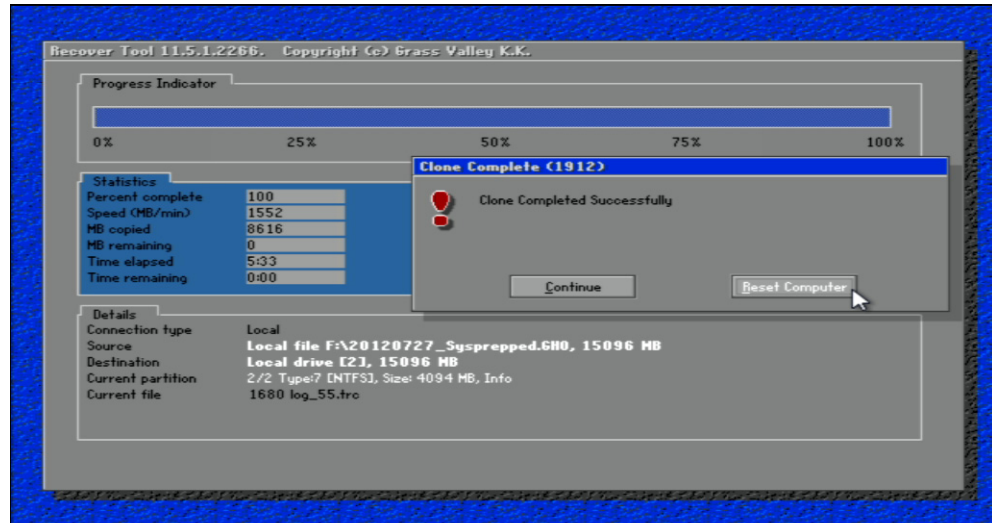


12. Click **Yes** when the confirmation message is displayed.



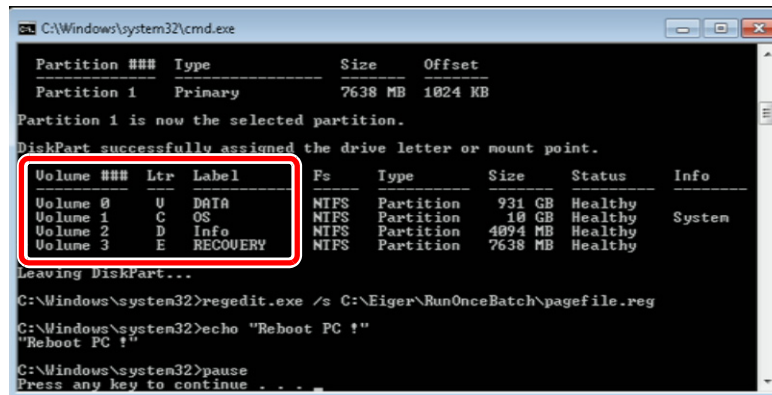
- The writing process of the recovery image is performed. This process will take a while.



13. Click **Reset Computer**.

- The T2 restarts and a batch process for SID generation, the drive letter assignment, and virtual memory allocation will run.

14. When you see the message "Press any key to continue...", confirm the drive structure is the following.



15. Press any key on the keyboard and restart the T2.

- The T2 will restart in the maintenance mode.
- If you want to start up the T2 system in the normal mode, switch to the normal mode after starting up the maintenance mode. For detailed instructions, refer to ["Restarting from the maintenance mode to the normal mode" on page 20](#).

NOTE: It is recommended to initialize the data after the recovery is completed. For detailed instructions, refer to ["Initializing the data" on page 28](#).

NOTE: Media files in the data drive (V: drive) cannot be used as they are even after the recovery is completed. Copy the media files to the external storage device, and then import them using the CommandCenter. For detailed instructions, refer to the T2 User Manual.

Recovery procedure for T2 Elite 2/Pro 2/Express 2

1. Turn the T2 on.

- Turn on the power switch of the front panel.

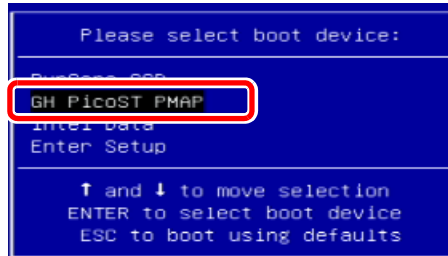
NOTE: For T2 Elite 2, make sure that no media is inserted in the media card reader.

NOTE: Make sure that any device other than the keyboard and mouse is not connected to the USB port.

2. When the POST screen appears, hold down the [F7] key on the keyboard.

- The Boot Menu (Please select boot device:) appears.

3. Select the recovery UFD using the [↑] or [↓] key, and then press the [Enter] key.



4. On the "TOP" page, press the [1] key and then press the [Enter] key on the keyboard.

```
*****
**  T2 Recovery Utility  Rev.001  **
**                               **
**    for Elite 2/Pro 2/Express 2  **
**    for Elite/Pro/Express       **
*****

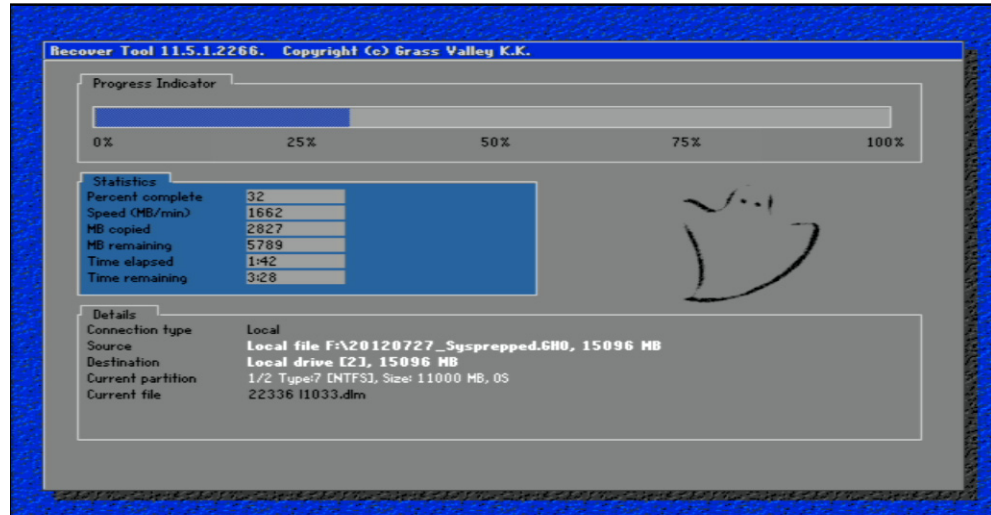
Please choose an option below:

[TOP]

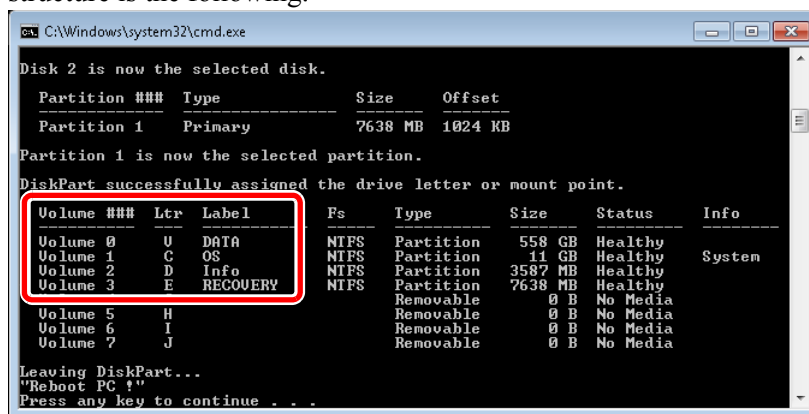
1. Restore the system to the factory image
2. Move to <<Advanced page>>
3. Exit program

Enter number (1 to 3) :
```

5. When the message "Are you sure you want to restore?" appears, press the [y] key and then press the [Enter] key on the keyboard.
 - The write-back process of the recovery image is performed. This process will take a while.



- When the write-back process of the recovery image is completed, T2 will be restarted a few times.
6. When you see the message "Press any key to continue...", confirm the drive structure is the following.



7. Press any key on the keyboard and restart the T2.
 - The T2 will restart in the maintenance mode.
 - If you want to start up the T2 system in the normal mode, switch to the normal mode after starting up the maintenance mode. For detailed instructions, refer to ["Restarting from the maintenance mode to the normal mode" on page 20.](#)

NOTE: It is recommended to initialize the data after the recovery is completed. For detailed instructions, refer to ["Initializing the data" on page 28.](#)

NOTE: Media files in the data drive (V: drive) cannot be used as they are even after the recovery is completed. Copy the media files to the external storage device, and then import them using the CommandCenter. For detailed instructions, refer to the T2 User Manual.

T2 Recovery Utility for T2 Elite 2/Pro 2/Express 2

T2 Recovery Utility is included in the recovery UFD for T2 Elite 2/Pro 2/Express 2.

The following operations can be performed with T2 Recovery Utility. For more information, see the reference.

- Automatic recovery (→page 44)
- Manual recovery (→page 47)
- Command prompt execution (→page 48)
- Disk formatting (→page 49)

Starting up T2 Recovery Utility

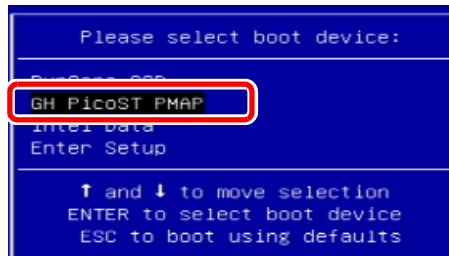
1. Turn the T2 on.

- Turn on the power switch of the front panel.

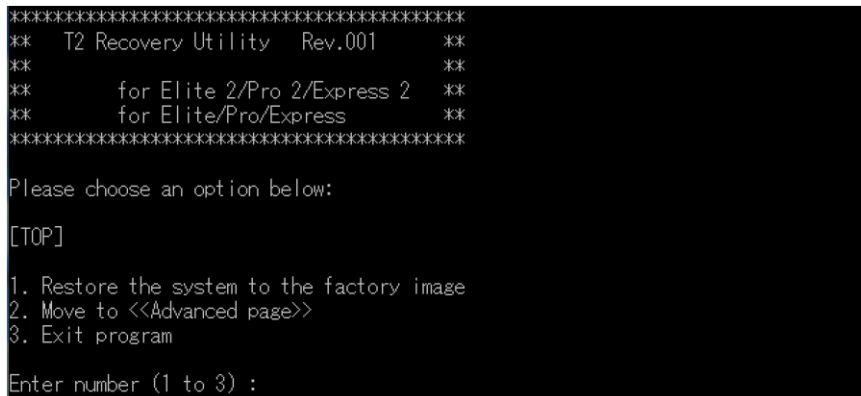
NOTE: For T2 Elite 2, make sure that no media is inserted in the media card reader.

NOTE: Make sure that any device other than the keyboard and mouse is not connected to the USB port.

2. When the POST screen appears, hold down the [F7] key on the keyboard.
 - The Boot Menu (Please select boot device:) appears.
3. Select the recovery UFD using the [↑] or [↓] key, and then press the [Enter] key.



- The "TOP" page of the "T2 Recovery Utility" screen appears.



Exiting T2 Recovery Utility

1. On the "TOP" page of the "T2 Recovery Utility" screen, press the [3] key and then press the [Enter] key on the keyboard.

```

*****
**  T2 Recovery Utility  Rev.001  **
**                               **
**    for Elite 2/Pro 2/Express 2  **
**    for Elite/Pro/Express        **
*****

Please choose an option below:

[TOP]

1. Restore the system to the factory image
2. Move to <<Advanced page>>
3. Exit program

Enter number (1 to 3) :

```

2. When the message "Please press any key to exit." appears, press any key on the keyboard.
 - T2 will shut down automatically.

Manual recovery

You can select the recovery image and recovery destination manually to restore the factory default condition.

Normally, follow the procedure ["Recovery procedure for T2 Elite 2/Pro 2/Express 2" on page 44](#) to restore the factory default condition.

1. Start up T2 Recovery Utility.
 - For more information, see ["Starting up T2 Recovery Utility" on page 46](#).
2. On the "TOP" page, press the [2] key and then press the [Enter] key on the keyboard.

```

*****
**  T2 Recovery Utility  Rev.001  **
**                               **
**    for Elite 2/Pro 2/Express 2  **
**    for Elite/Pro/Express        **
*****

Please choose an option below:

[TOP]

1. Restore the system to the factory image
2. Move to <<Advanced page>>
3. Exit program

Enter number (1 to 3) :

```


3. On the "Advanced" page, press the [1] key and then press the [Enter] key on the keyboard.

```
*****
**  T2 Recovery Utility  **
*****


Please choose an option below:

[TOP] > [Advanced*]

1. Restore the system manually
2. Move to <<Drive Utility page>>
3. Run the command prompt
4. Back to <<Top page>>

Enter number (1 to 4) :
```

- Press the [4] key on the "Advanced" page to go back to the "TOP" page.
4. Perform steps 4 and later in ["Recovery procedure for T2 Elite/Pro/Express" on page 37](#).

 **CAUTION:** If recovery has been performed on the SSD/HDD for data by accident, try reformatting of the data disk. For more information, see ["Disk formatting" on page 49](#).

Executing command prompt

1. Start up T2 Recovery Utility.
 - For more information, see ["Starting up T2 Recovery Utility" on page 46](#).
2. On the "TOP" page, press the [2] key and then press the [Enter] key on the keyboard.

```
*****
**  T2 Recovery Utility  Rev.001  **
**                               **
**    for Elite 2/Pro 2/Express 2  **
**    for Elite/Pro/Express       **
**                               **
*****

Please choose an option below:

[TOP]

1. Restore the system to the factory image
2. Move to <<Advanced page>>
3. Exit program

Enter number (1 to 3) :
```


3. On the "Advanced" page, press the [3] key and then press the [Enter] key on the keyboard.

```
*****
**  T2 Recovery Utility  **
*****

Please choose an option below:

[TOP] > [Advanced*]

1. Restore the system manually
2. Move to <<Drive Utility page>>
3. Run the command prompt
4. Back to <<Top page>>

Enter number (1 to 4) :
```

- A new window appears to allow various Windows command prompt operations.
- To go back to the "Advanced" page, execute the "exit" command.
- Press the [4] key on the "Advanced" page to go back to the "TOP" page.

Disk formatting

1. Start up T2 Recovery Utility.
 - For more information, see ["Starting up T2 Recovery Utility" on page 46](#).
2. On the "TOP" page, press the [2] key and then press the [Enter] key on the keyboard.

```
*****
**  T2 Recovery Utility  Rev.001  **
**                               **
**    for Elite 2/Pro 2/Express 2  **
**    for Elite/Pro/Express        **
*****

Please choose an option below:

[TOP]

1. Restore the system to the factory image
2. Move to <<Advanced page>>
3. Exit program

Enter number (1 to 3) :
```

3. On the "Advanced" page, press the [2] key and then press the [Enter] key on the keyboard.

```
*****
**  T2 Recovery Utility  **
*****

Please choose an option below:

[TOP] > [Advanced*]

1. Restore the system manually
2. Move to <<Drive Utility page>>
3. Run the command prompt
4. Back to <<Top page>>

Enter number (1 to 4) :
```

- Press the [4] key on the "Advanced" page to go back to the "TOP" page.

4. On the "Drive Utility" page, press one of the [1] to [3] keys and then press the [Enter] key on the keyboard.

```
*****
**  T2 Recovery Utility  **
*****

Please choose an option below:

[TOP] > [Advanced] > [Drive Utility*]

1. Show the disk list
2. Format the System Drive
3. Format the Data Drive
4. Back to <<Advanced page>>
5. Back to <<Top page>>

Enter number (1 to 5) :
```

- The operations executed by the [1] to [3] keys are as follows.
 - [1]: Displays the list of the disks of T2. You can see the status, size, volume letter and label of each disk.
 - [2]: Executes quick formatting of the system drive (Disk 1).
 - [3]: Executes quick formatting of the data drive (Disk 0) in the GPT format.
- Press the [4] key on the "Drive Utility" page to go back to the "Advanced" page. Press the [5] key to go back to the "TOP" page.

Troubleshooting Problems

If you think there is something wrong (broken) with your T2, go through the following preliminary steps:

- ["Step 1: Check configurations" on page 52](#)
- ["Step 2: Check connections and external equipment" on page 52](#)

Then use the following topics to troubleshoot specific problem areas:

- ["Shutdown/restart problems" on page 52](#)
- ["Checking external equipment" on page 53](#)
 - ["PC monitor problems" on page 53](#)
 - ["Keyboard problems" on page 53](#)
 - ["Mouse problems" on page 54](#)
- ["Motherboard/BIOS startup" on page 54](#)
- ["Windows startup" on page 56](#)
- ["T2 system startup" on page 56](#)
- ["I/O board unit problems" on page 56](#)
- ["Front panel problems" on page 57](#)
 - ["Touch screen LCD and control buttons problems" on page 57](#)
- ["2.5 inch removable SSD bay problems" on page 57](#)
- ["Media card reader problems" on page 58](#)
- ["Video problems" on page 58](#)
- ["Audio problems" on page 58](#)
- ["Timecode problems" on page 59](#)
- ["Operational problems" on page 59](#)
- ["System problems" on page 60](#)
- ["Storage problems" on page 60](#)
 - ["Media File System problems" on page 60](#)
 - ["Media disk problems" on page 60](#)
 - ["Checking the storage system" on page 62](#)

Step 1: Check configurations

Many times what appears to be a T2 fault is actually an easy-to-fix configuration problem. Refer to the *T2 User Manual* for operator tips that help you verify basic configuration and correct common record/play problems.

Step 2: Check connections and external equipment

Loose or improperly connected cables are the most likely source of problems for the system, monitor, or other external equipment. A quick check of all the cable connections can easily solve these problems. Refer to the *T2 User Manual* for help with making connections. Refer to the troubleshooting topic "[Checking external equipment](#)" on page 53 if you suspect a failure in a device connected to the T2.

Shutdown/restart problems

If the T2 is inoperable due to a software error it can effect the operation of the power switch. If pressing the power switch does not shut down the T2, press and hold the switch for 10 seconds. This forces the T2 to execute a hard power down. If that does not work, turn off the main power switch on the rear panel and disconnect the power cord.

Checking external equipment

This section provides troubleshooting procedures for external devices that connect to the T2.

PC monitor problems

The BIOS startup screen is displayed with VGA resolution.

Problem	Possible Causes	Corrective Actions
Screen turns on, but nothing from the T2 is displayed.	The monitor ports (VGA/ DVI-D) are faulty, or the cable is broken.	Replace the PC monitor cable. Make sure, the PC monitor can display at least SXGA resolution.
	BIOS settings have been tampered with.	Enter the BIOS setting menu. And run "Load Setup Default".
	The T2 system settings have been tampered with.	Restore default settings using the recovery UFD. Refer to "Restoring to the factory default condition" on page 37 .
The dual monitor cannot be used.	The monitor ports (VGA/ DVI-D) cannot be connected simultaneously. (Exclusive use only)	—

Keyboard problems

The keyboard is detected during BIOS startup. The USB keyboard is detected with plug-and-play.

Problem	Possible Causes	Corrective Actions
The T2 does not respond correctly when one or more of the keys on the keyboard are pressed.	<ul style="list-style-type: none"> The keyboard is faulty. The motherboard level problem. 	<ol style="list-style-type: none"> 1. Try another USB port. 2. If the problem persists, proceed with the next step. 3. If the problem persists, the motherboard is faulty. Contact Grass Valley Support.
	The T2 system settings have been tampered with.	Restore default settings using the recovery UFD. Refer to "Restoring to the factory default condition" on page 37 .

Mouse problems

The mouse is detected during BIOS startup. The USB mouse is detected with plug-and-play.

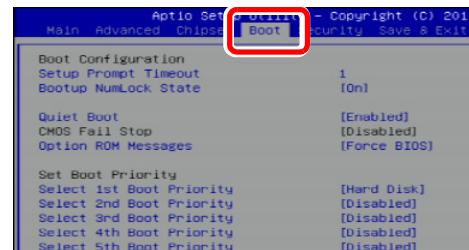
Problem	Possible Causes	Corrective Actions
The T2 does not respond correctly when one or more of the buttons on the mouse are clicked.	<ul style="list-style-type: none"> The mouse is faulty. The motherboard level problem. 	<ol style="list-style-type: none"> 1. Try another USB port. 2. If the problem persists, replace a mouse. 3. If the problem persists, the motherboard is faulty. Contact Grass Valley Support.
	The T2 system settings have been tampered with.	Restore default settings using the recovery UFD. Refer to "Restoring to the factory default condition" on page 37 .

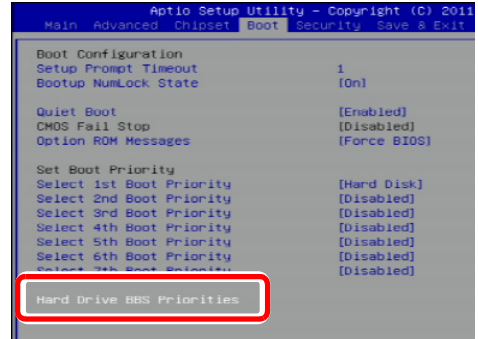
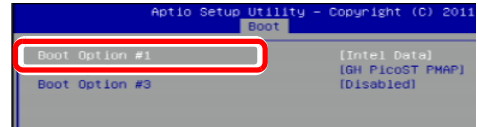
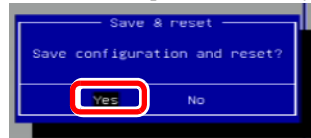
Motherboard/BIOS startup

A few seconds after startup, on the PC monitor a black screen is displayed with system information messages. This is the BIOS Power On Self Test (POST). Press the [F2] key on the keyboard during this time to enter the BIOS settings pages. When the BIOS POST completes, the Grass Valley Logo appeared on the screen. At that point the Windows operating system begins to load.

If during the BIOS POST time a message appears that requires your input or if the T2 does not progress to Windows startup, it indicates a problem at the BIOS settings, the SSD (for the system) or the motherboard level. To correct problems of this nature, please try the followings.

Problem	Possible Causes	Corrective Actions
After the Grass Valley logo is displayed second time during T2 startup, " _ " is displayed at the left of the screen and the system stops.	The startup priority of the SSD (for the system) and the HDD/SSD (for the data) is in reverse order.	Use the following procedures to change the BIOS settings. <ol style="list-style-type: none"> 1. Press the [F2] key on the keyboard to display the BIOS screen. 2. Press the [F9] key on the keyboard. The "Load Optimized Defaults" screen appears. 3. Select [Yes] using the [←] or [→] key on the keyboard, and then press the [Enter] key. 4. Move to the "Boot" tab using the [←] or [→] key on the keyboard.
After the Grass Valley logo is displayed during T2 startup, a message "Reboot and Select proper Boot device or Insert Boot Media in selected Boot device and press a key" is displayed and the system stops.		



Problem	Possible Causes	Corrective Actions
		<p>5. Select "Hard Drive BBS Priorities" using the [↑] or [↓] key on the keyboard, and then press the [Enter] key.</p>  <p>6. Select "Boot Option #1" using the [↑] or [↓] key on the keyboard, and then press the [Enter] key.</p>  <p>7. Select the SSD (for the system) using the [↑] or [↓] key on the keyboard, and then press the [Enter] key.</p> <p>8. Select "Boot Option #2" using the [↑] or [↓] key on the keyboard, and then press the [Enter] key.</p> <p>9. Select the recovery UFD using the [↑] or [↓] key on the keyboard, and then press the [Enter] key.</p> <p>10. Make sure that "Boot Option #3" is set to "Disabled". If "Disabled" is not set, set it to "Disabled".</p> <p>11. Press the [F10] key on the keyboard. The "Save & reset" screen appears.</p> <p>12. Select [Yes] using the [←] or [→] key on the keyboard, and then press [Enter] key.</p>  <p>The T2 restarts.</p>

When the names of HDD or SSD (for data) are not displayed in POST screen after restart, check a status. Refer to ["Media disk problems" on page 60](#).

If the problem persists, contact Grass Valley Support.

Windows startup

After the motherboard startup processes complete the Windows operating system starts up. Normally the Windows operating system completes its processes automatically without the need to press keys or respond to messages. The T2 is set to automatically log on without any input.

If the Windows startup screen does not proceed automatically or if a message appears that requires your input, it indicates a problem at the operating system level. If the problem cannot be corrected with a supported procedure (such as networking), the Windows operating system is not operating as it should. To correct problems of this nature, restore your system software. Refer to ["Restoring to the factory default condition" on page 37](#).

T2 system startup

After the Windows operating system startup processes complete, the T2 system startup processes begin. After the T2 logo appears, CommandCenter is launched in the case of normal mode.

These startup processes will take about 50 seconds.

If the system does not startup correctly, restore default settings using the recovery UFD. Refer to ["Restoring to the factory default condition" on page 37](#).

I/O board unit problems

To test the I/O board unit, do the following:

1. Configure an output (P1/P2 channel) and input (R1 channel) to the same video and audio type.
2. Load a correct clip to P1 or P2 channel.
3. Start the loop play of this clip.
4. Connect (loop) the configured output channel of the loop play directly to the configured input.
 - So this for both video and audio. This provides a verified good signal to the inputs.
5. Record a short clip.
6. Verify the I/O board unit's recording functionality as follows:
 - (1) Check the thumbnail of the recording clip.
 - (2) Listen to the clip's audio with headphones from the front panel headphone output.
7. Using the other play channel, play back the clip.
8. Verify the I/O board unit's play out functionality as follows:
 - (1) Check the video on a verified good output device.
 - (2) Listen to the audio output.
9. Repeat this procedure for each video and audio type.

If you get the expected results, the I/O board unit is good and any problems you are experiencing are due to some other cause.

If you get faulty results it indicates a problem with the I/O board unit. Investigate the problem further as described in the following table. If the problem persists, contact Grass Valley Support.

Problem	Possible Causes	Corrective Actions
A message "Board not found" appears in the preview area.	The device driver is not working properly.	Restore default settings using the recovery UFD. Refer to "Restoring to the factory default condition" on page 37 .

Front panel problems

Touch screen LCD and control buttons problems

Problem	Possible Causes	Corrective Actions
The touch screen LCD image is faulty.	<ul style="list-style-type: none"> The software or operating system on the T2 has a fault. 	<ol style="list-style-type: none"> 1. Make sure CommandCenter is up and running. 2. If the problem persists, connect a mouse, keyboard, and PC monitor to the T2 and test functionality. Compare this functionality to that of the touch screen LCD. If everything works fine with the PC monitor but not the front panel, there could be a software problem on the touch screen LCD. Restore the T2 system. Refer to "Restoring to the factory default condition" on page 37.
No response against touch control.	<ul style="list-style-type: none"> The touch screen LCD itself is faulty. 	
The control buttons operates not at all.	<ul style="list-style-type: none"> The control buttons or front board are broken. The software or operating system on the T2 has a fault. 	<ol style="list-style-type: none"> 1. Make sure CommandCenter is up and running. 2. When the control buttons do not operate with CommandCenter launched, make sure the button kit device is present. Enter the maintenance mode. Open the device manager. And confirm "HID-compliant game controller" is present under the "Human Interface Devices" category. 3. Restore default settings using the recovery UFD. Refer to "Restoring to the factory default condition" on page 37.

2.5 inch removable SSD bay problems

The descriptions in this section only apply to T2 Elite/T2 Pro/T2 Express.

Problem	Possible Causes	Corrective Actions
There is no access to a drive in the removable SSD bay. This can be accompanied by an error message from the Windows operating system.	There is a problem with the SSD currently inserted in the drive, or the drive bay itself is faulty.	<ol style="list-style-type: none"> 1. Unlock the lock switch and remove the SSD. Insert it again and lock the lock switch. Watch the drive lights turned on. 2. Try another SSD and watch the drive lights turned on.

Media card reader problems

The descriptions in this section only apply to T2 Elite 2.

Problem	Possible Causes	Corrective Actions
There is no access to a drive in the media card reader. This can be accompanied by an error message from the Windows operating system.	There is a problem with the media currently inserted in the media card reader, or the card reader itself is faulty.	<ol style="list-style-type: none"> 1. Insert media and watch the access light on the left of the card turned on. 2. Try another media and watch the access light turned on.

Video problems

For the corrective actions in this section, refer to the T2 User Manual for detailed instructions.

Problem	Possible Causes	Corrective Actions
A channel displays black at the end of the clip.	The channel is in E to E mode and there is no video signal present at the input.	Verify that you have a valid input signal.
P1/P2 channels have a dissimilar video display when no clip is playing.	One channel is in E to E and the other channel is not.	If similar display is required, configure P1/P2 channels the same.
The picture level modulates at a particular frequency.	There is excessive hum riding on the video input signal. The automatic gain control (AGC) circuits will tend to modulate the picture level at that frequency in an attempt to compensate for the problem.	Check the video input signal for excessive hum.

Audio problems

For the corrective actions in this section, refer to the T2 User Manual for detailed instructions.

Problem	Possible Causes	Corrective Actions
No audio.	Wrong audio input set.	Set the correct audio input.
Both E to E and playback audio output are distorted.	Audio input signal clipping caused by excessive audio input level.	Check for input audio clipping. Adjust the audio input trim. Adjust the P1/P2 channel audio level. Reduce the source audio input level.
Analog audio level is too low.	Audio level needs to be adjusted.	Adjust the audio input trim. Adjust the P1/P2 channel or R1 channel audio level. Increase the source audio input level.

Problem	Possible Causes	Corrective Actions
Audio level is too low.	Audio level needs to be adjusted.	Adjust the P1/P2 channel or R1 channel audio level. Increase the source audio input level in the workstation mode.
Audio level meters do not display the correct reference level used in my system.	Incorrect audio reference level.	Select the correct audio reference level.
R1 audio via the MONITOR port or the headphone jack has periodic noise.	Video input signal is out of sync with the audio clock.	Check the current setting of R1 channel for video standard. Verify that the video input signal is the correct standard.

Timecode problems

For the corrective actions in this section, refer to the T2 User Manual for detailed instructions.

Problem	Possible Causes	Corrective Actions
Recorded timecode reads --:--:--;--.	No timecode source for the channel.	Set the timecode source.
A clip shows no mark-in/mark-out timecode, the current timecode display shows --:--:--;--., or the last valid timecode is displayed.	The selected timecode source was missing or intermittent during recording.	Check that you have the right R1 channel timecode source selected, verify that timecode is present in the source, and record the clip again. You can also stripe the timecode on an existing clip.

Operational problems

For the corrective actions in this section, refer to the T2 User Manual for detailed instructions.

Problem	Possible Causes	Corrective Actions
A clip does not play, even though similar clips play on the same channel.	The clip does not match current channel settings or the clip is corrupt.	If the clip appears grayed-out it means it does not match current channel settings. Check the clip's properties and verify they are correct for the video standard, and other current settings. Compare properties with those of a clip that plays correctly. If properties are correct the clip is corrupt. Delete and re-record the clip.
A clip can not be edited.	The clip is locked.	Unlock the clip.
Cannot load and play a list.	The playlist does not match current channel settings or the playlist is corrupt.	If the playlist appears grayed-out it means it does not match current channel settings. Check the video standard in the property of the source clip for each event in the playlist. Compare properties with those of a playlist that plays correctly. If properties are correct the playlist is corrupt. Delete and re-make the playlist.

Problem	Possible Causes	Corrective Actions
Cannot control a channel from the local T2. Controls are disabled.	The channel and the channel's control mode is set to Remote.	Turn off the Remote mode. Or alternatively, enable local operations while being remote controlled.

System problems

For the corrective actions in this section, refer to the T2 User Manual for detailed instructions.

Problem	Possible Causes	Corrective Actions
R1 channels does not record.	R1 channel is configured for incorrect video standard.	Check the current setting of R1 channel for video standard. Verify that the video input signal is the correct standard.

Storage problems

Use the following sections if you suspect problems with your T2's storage system.

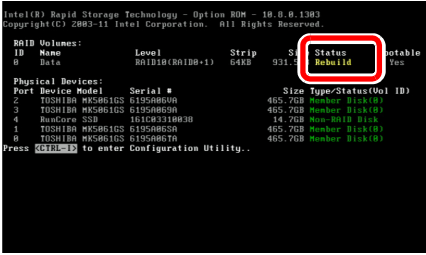

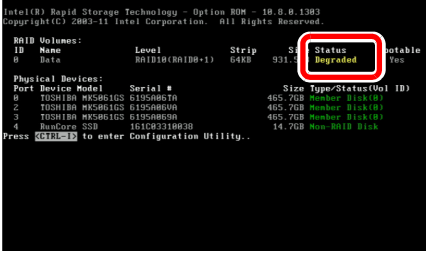

Media File System problems

Problem	Possible Causes	Corrective Actions
One or more clips do not play or record correctly.	The media database is out of sync with the media files or there is a corrupt media file. Also see "Checking the storage system" on page 62 for causes related to certain usage patterns.	<ol style="list-style-type: none"> 1. If the problem is only associated with a specific clip or clips, delete the problem clips. 2. If the problem persists, run the Maintenance Tools and check disk error. Refer to "Media disk error checks" on page 23. If the problem persists, run the database consistency check. Refer to "Checking the data consistency" on page 26.

Media disk problems

To check the SATA drives quickly, open **My Computer** from the **Start** menu, and check C:, D:, and V: drives. The C: and D: drives are in the SSD (for the system) above the 2.5 inch removable SSD bay. The V: drive is striped back of the touch screen LCD.

Problem	Possible Causes	Corrective Actions
The message "Media disks getting full..." appears.	The media disks are reaching maximum capacity.	Delete unused clips and empty the Recycled Bin to make space on the media drives.

Problem	Possible Causes	Corrective Actions
<p>"Rebuild" appears in "Status" on the BIOS screen during T2 startup.</p> 	<p>Running RAID re-building.</p> <p>The RAID rebuild function is automatically executed if the T2 comes to an abnormal end (such as if the main power fails or if you hold down the power switch to terminate the T2 forcefully) when used the T2 last time.</p>	<p>Wait until the RAID rebuild completes (until 100% appears on the screen).</p>
<p>Playback/Record stops. The performance is low.</p> <p>The icon ( 11.4%) is displayed at the right of the screen for the Front Panel Mode or on the status bar of the Workstation Mode.</p>		
<p>"Degraded" or "Failed" appears in "Status" on the BIOS screen during T2 startup.</p> 	<p>RAID system has some problem.</p>	<p>Contact Grass Valley Support.</p>
<p>The icon () appears at the right of the screen for the Front Panel Mode or on the status bar of the Workstation Mode.</p> <p>The T2 starts up in the maintenance mode even when starting up in the normal mode.</p>		

Checking the storage system

The following section provides guideline for investigating problem areas related to the storage system. Use this section if you have problems with media input and/or output that are intermittent or seem to be related to certain usage patterns.

Problem	Possible Causes	Corrective Actions
Symptoms can include the video recording stop or black video at playout, frozen video, slow performance, or inconsistent media access.	<p>The following causes can occur on their own or in combination to produce the problem:</p> <ul style="list-style-type: none">• Disk oversubscription - This occurs when requests to the media disk exceed the disk's bandwidth capabilities. This generally occur in extreme cases when a combination of high-bandwidth operations are taking place, such as JOG/shuttle, record/play on multiple channels.• High CPU activity in Windows - This occurs when activities on the Windows operating system over-tax the capabilities of the motherboard processor. This commonly happens when unsupported software has been installed that competes with the T2 applications. Virus scanners and screen savers can cause this type of problem, since they can start automatically and consume system resources.• Disk faults - This occurs when a media disk is severely fragmented or has a bad blocks that interfere with some, but not all, media operations. For example, a particular clip can be written on a bad block, so the problem occurs only on that clip.	<ol style="list-style-type: none">1. When you install the unsupported application software, uninstall them.2. If the problem persists, try to re-create the problem. Identify all the interactions that affected the system and run all the same operations as when the error occurred. Investigate the functions that seem to push the system into the error state. If you determine that certain simultaneous operations cause the problem, re-order your workflow to avoid those situations. If you determine that the problem is only on certain clips, investigate disk faults.

Index

Numerics

2.5 inch removable SSD bay
Troubleshooting 57

A

Audio
Troubleshooting 58

B

Battery replacement 6
BIOS
Startup 54

C

Canadian Certified Power Cords 7
Canadian EMC Notice of Compliance 7
Certifications and compliances 7
CommandCenter 18, 20
Startup troubleshooting 56
Control buttons
Procedure 57
CPU
Troubleshooting 62

D

Data
Backup 29
Consistency 26
Initialize 28
Maintenance 26
Restore 31
Database
Troubleshooting 60
Defragmentation 24
Disks
Defragmentation 24
Error check 23
Troubleshooting 62

E

EMC Directive Class A Warning 8
External equipment
Troubleshooting 53

F

FCC Emission Control and Limits 7, 8
Frozen video
Troubleshooting 62

I

I/O board unit
Troubleshooting 56
Injury precautions 5

K

Keyboard
Troubleshooting 53

L

LAN port indicator codes 15
LED 15
Log files
Exporting 34

M

Maintenance mode
Description 18
Exit 20
Startup 19
Maintenance tools
Description 22
Exit 22
Startup 22
Media card reader
Troubleshooting 58
Media disk
Maintenance 23
Troubleshooting 60
Media file system
Troubleshooting 60
Motherboard
Startup 54
Mouse
Troubleshooting 54

N

Normal mode 18

O

- Operation
 - Troubleshooting 59
- Overview descriptions 14

P

- Password 19
- PC monitor
 - Troubleshooting 53
- Product damage precautions 5

R

- RAID
 - Troubleshooting 61
- Recovery 37
- Recovery UFD 37
- Restart problems 52
- Restoring the default system 37
- RJ-45 LAN port
 - LEDs 15

S

- Safety terms and symbols 6
- Service safety summary 7
- Shutdown problems 52
- Status indicators 15
- Storage system
 - Troubleshooting 62
- Support
 - Contacting 10
- System
 - Information 32
 - Maintenance 32
 - Startup 56
 - Troubleshooting 60

T

- Tests
 - I/O board unit 56
- Timecode
 - Troubleshooting 59
- Touch screen LCD
 - Cleaning 18
 - Troubleshooting 57
- Troubleshooting
 - Preliminary steps 51

V

- Ventilation 5
- Video
 - Troubleshooting 58

W

- Windows
 - Desktop 36
 - Startup 56